

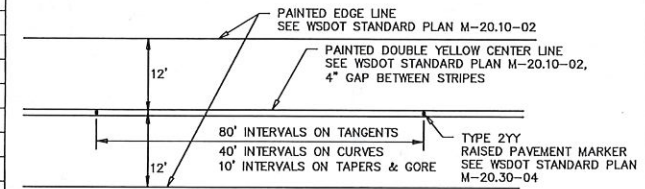
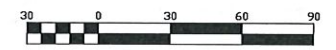
LEGEND—PAVEMENT MARKINGS

- (P1) PAINTED SKIP YELLOW PASSING LINE & RAISED PAVEMENT MARKERS TYPE 2YY
- (P2) PAINTED DOUBLE YELLOW CENTER LINE & RAISED PAVEMENT MARKERS TYPE 2YY
- (P3) PAINTED EDGE LINE
- (P4) PAINTED NO-PASS LINE & RAISED PAVEMENT MARKERS TYPE 2YY
- (P5) PLASTIC 24" STOP LINE. INSTALL PERPENDICULAR TO CL. LOCATION TO BE VERIFIED BY TRAFFIC DEPT PRIOR TO INSTALLATION.

***ALL SIGN STATION LOCATIONS SHALL BE APPROVED BY ENGINEER PRIOR TO INSTALLATION
 *** SHEETING TYPES AS DESIGNATED IN ASTM SPECIFICATION D4956
 **** THE EXISTING FLASHING BEACONS SHALL REMAIN IN SERVICE WHILE SCHOOL IS IN SESSION.

PERMANENT SIGNING SCHEDULE

SYMBOL	SIGN CODE NO. (DESCRIPTION)	SIGN SIZE		LETTER SIZE OR CODE	***SHEETING TYPE	POST MATERIAL	POST SIZE	POST LENGTH	QUANT.	**LOCATION	BLOCK #	NOTES
		X	Y									
(S1)	S5-1 (SCHOOL SPEED LIMIT 20)	24"	48"	STANDARD	4	STEEL	2.5" SQ.	12'	1	99+84 LT.	-	****REUSE EXISTING FLASHING BEACONS
(S1-A)	S1-1 (SCHOOL ADVANCE WARNING)	36"	36"	STANDARD	4	STEEL	2.5" SQ.	12'	1	101+00 RT.	-	FLOURESCENT YELLOW GREEN
	W16-9P (AHEAD)	24"	12"	STANDARD	4	STEEL	2.5" SQ.	12'	1	-	-	-
(S2)	R2-1 (SPEED LIMIT 35)	24"	30"	STANDARD	4	STEEL	2.5" SQ.	12'	1	109+60 LT.	-	-
(S3)	W1-1L (LEFT TURN)	36"	36"	STANDARD	4	STEEL	2.5" SQ.	12'	1	-	-	-
	W13-1 (20 MPH ADVISORY)	24"	24"	STANDARD	4	STEEL	2.5" SQ.	12'	1	109+63 RT.	-	-
(S4)	W1-7 (INTERSECTION WARNING)	48"	24"	STANDARD	4	STEEL	2.5" SQ.	12'	1	111+62 LT.	-	-
	D-3 (FIR TREE RD SE)	N/A	12"	SERIES B	4	-	-	-	2	-	4100	-
	D-3 (RICH RD SE)	N/A	12"	SERIES B	4	STEEL	2.5" SQ.	12'	2	111+89 RT.	8700	-
	R1-1 (STOP)	36"	36"	STANDARD	4	-	-	-	1	-	-	-
(S6)	W10-1 (RAIL CROSSING)	36"	DIA.	STANDARD	4	STEEL	2.5" SQ.	12'	1	114+15 RT.	-	-
(S7)	W1-8 (CHEVRON)	24"	30"	STANDARD	4	STEEL	2.5" SQ.	12'	1	114+56 RT.	-	-
(S8)	W1-8 (CHEVRON)	24"	30"	STANDARD	4	STEEL	2.5" SQ.	12'	1	-	-	-
(S8-A)	W1-8 (CHEVRON)	24"	30"	STANDARD	4	STEEL	2.5" SQ.	12'	1	115+25 RT.	-	-
(S8-B)	W1-6 (CURVE ARROW)	48"	24"	STANDARD	4	STEEL	2.5" SQ.	12'	1	115+35 RT.	-	-
(S9)	W1-6 (CURVE ARROW)	48"	24"	STANDARD	4	STEEL	2.5" SQ.	12'	1	115+55 RT.	-	-
(S10)	W1-8 (CHEVRON)	24"	30"	STANDARD	4	STEEL	2.5" SQ.	12'	1	-	-	-
(S10-A)	W1-8 (CHEVRON)	24"	30"	STANDARD	4	STEEL	2.5" SQ.	12'	1	115+93 RT.	-	-



C:\Projects\06_capitalconst\61460 rich road upgrade phase 2 87th-normandy\Design\CADD\Current Design\PreliminaryDesign\Rich_Rd_ph2_Traffic_Plan.dwg

THURSTON COUNTY PUBLIC WORKS
 9605 TILLEY RD S. STE-C, OLYMPIA, WA 98512
 (360) 867-2300

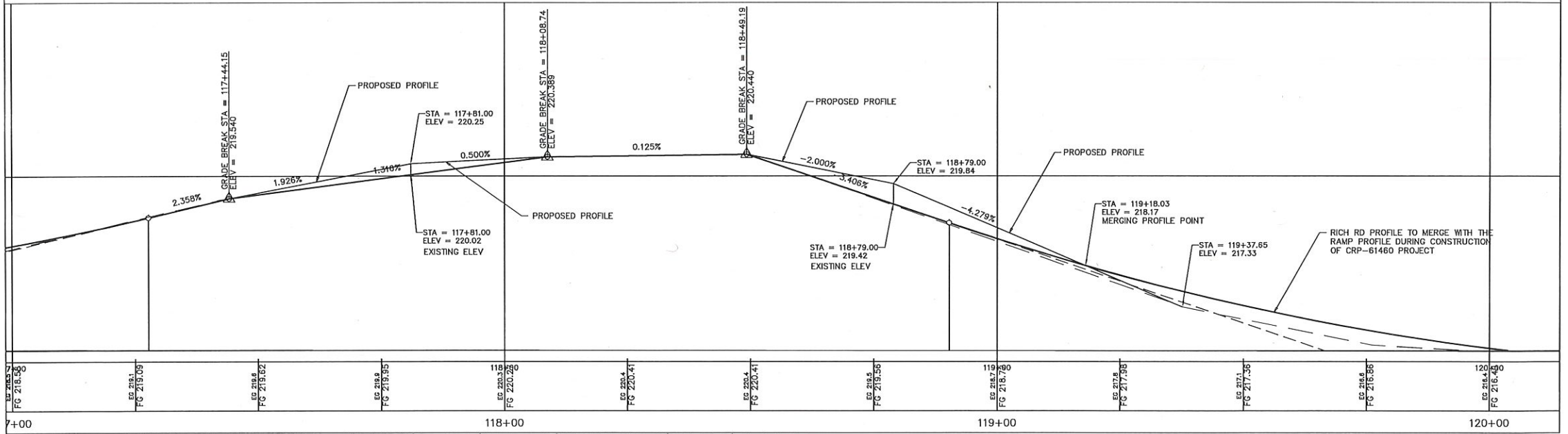
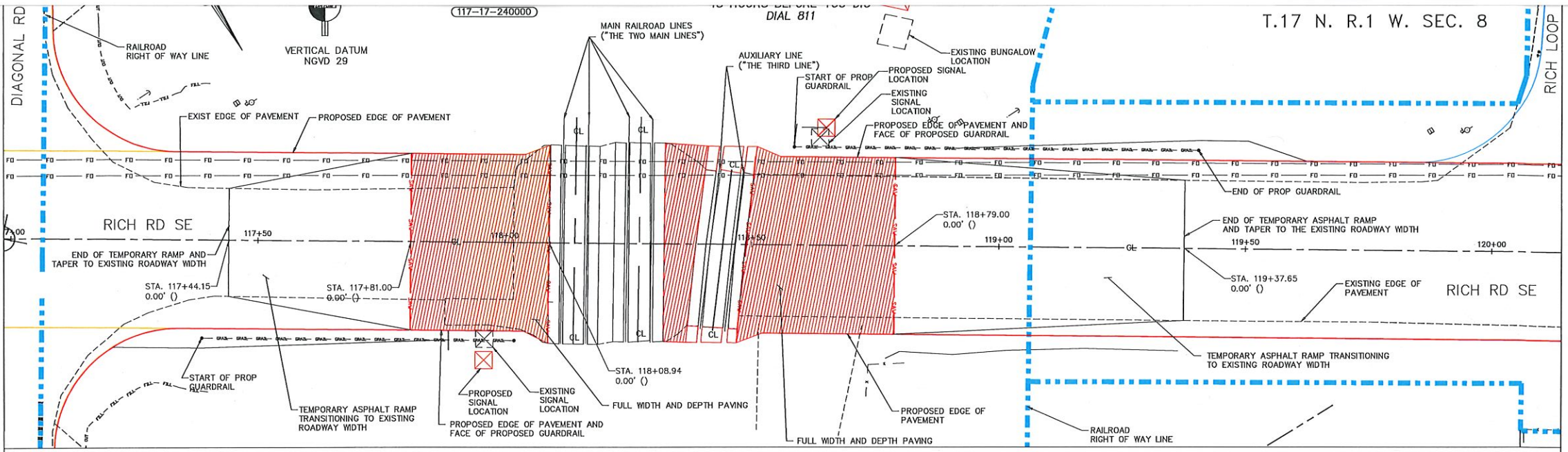


Designed: VB	Revisions	Date
Drafted: MB		
Checked: MU		
Scale: AS NOTED		

RICH RD PHASE-2 87TH AVE TO NORMANDY ST
 C.R.P. No. 61460 F.A. No. STPUS-5271(001)

SIGNING & CHANNELIZATION 1

Sheet
 1 of 2



C:\Projects\06_CapitalConst\61460 Rich Road Upgrade Phase 2 87th-Normandy\Design\CADD\Current Design\PreliminaryDesign\Rich-2_2013_PP_Rev0-(RR_Study4-GR)_TCPavingLimits.dwg

THURSTON COUNTY PUBLIC WORKS
 9605 TILLEY RD S. STE-C, OLYMPIA, WA 98512
 (360) 867-2300

Designed: VB	Date
Drafted: MB	
Checked: MGU	
Scale: AS NOTED	

RICH RD PHASE-2 87TH AVE TO
 NORMANDY ST
 C.R.P. No. 61460 F.A. No. STPUS-5271(001)

RAILROAD CROSSING 085773C
 PLAN AND PROFILE (REVISED, 11X17 SHEET)

Sheet
 1 of 1