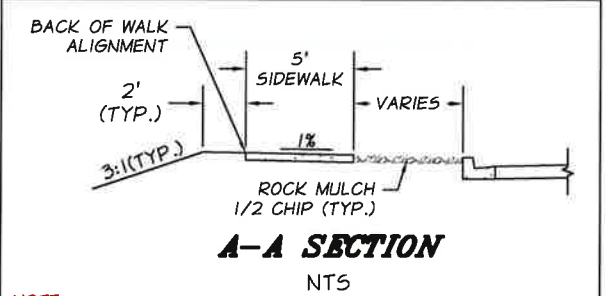


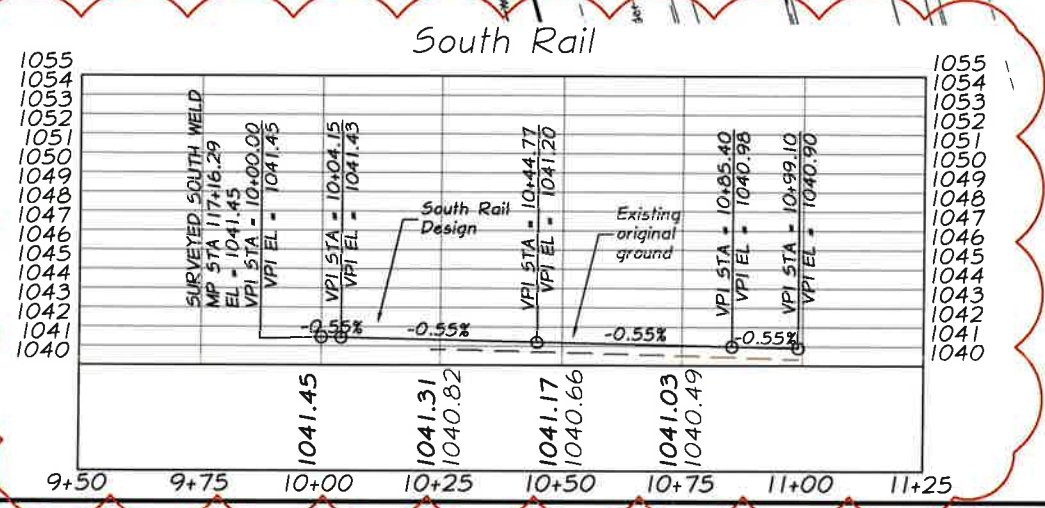
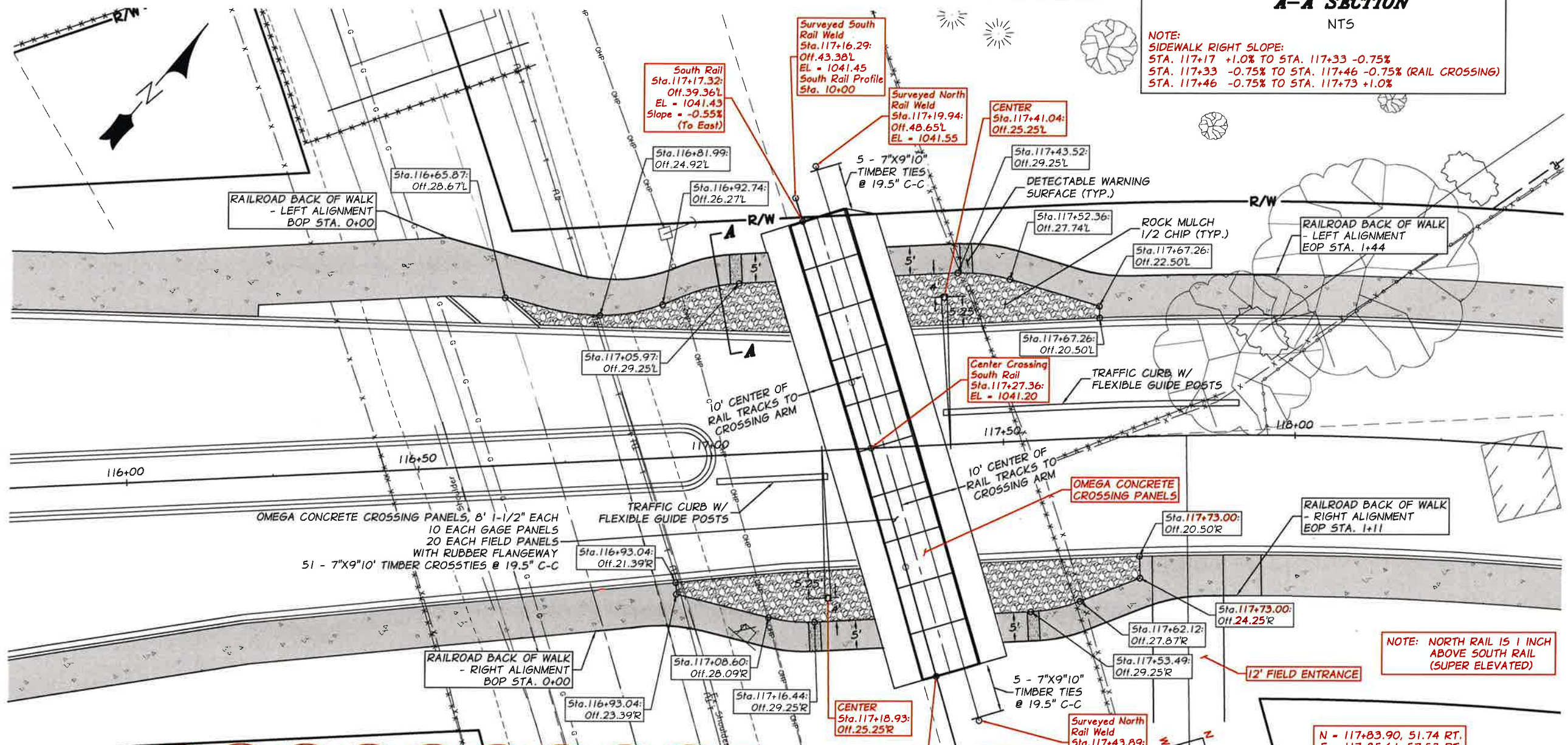
# MILL PARKWAY

**LEGEND**

- ROCK MULCH 1/2 CHIP (TYP.)
- CEMENT CONC. SIDEWALK



**NOTE:**  
SIDEWALK RIGHT SLOPE:  
STA. 117+17 +1.0% TO STA. 117+33 -0.75%  
STA. 117+33 -0.75% TO STA. 117+46 -0.75% (RAIL CROSSING)  
STA. 117+46 -0.75% TO STA. 117+73 +1.0%



MILL PARKWAY  
ROUNDBABOUT AND  
BUTTERFIELD ROAD

PROJECT NO. 3446-1B  
TIB NO. 8-4039(027)-1

PREPARED UNDER  
THE DIRECTION OF:

**PRELIMINARY  
PLANS**

COUNTY ENGINEER  
DATE:

PROJECT ENGINEER:  
BRETT SHEFFIELD

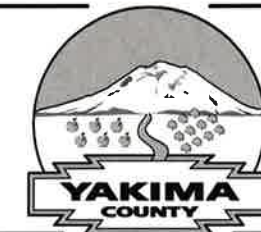
DRAWN: J. MATTHEWS  
CHECKED BY: KIM PFAFF  
REVISED 6-23-21

REVISION:	

RR1(A)  
RAILROAD PLAN

SHEET 44A OF 171  
SUPPLEMENTAL

Q:\Civil 3D Projects\EW Corridor\Phase 1B YC design changes\sheet\3446\_sidewalks with train crossing\_MP\_Revise 6\_23\_21.dwg, plan, 6/24/2021, 10:19:00 AM



MILL PARKWAY  
ROUNDBOUT AND  
BUTTERFIELD ROAD

PROJECT NO. 3446-1B  
TIB NO. 8-4039(027)-1

PREPARED UNDER  
THE DIRECTION OF:

**PRELIMINARY  
PLANS**

COUNTY ENGINEER  
DATE:

PROJECT ENGINEER:  
BRETT SHEFFIELD

DRAWN: J. MATTHEWS  
CHECKED BY: KIM PFAFF

REVISED 6-23-21

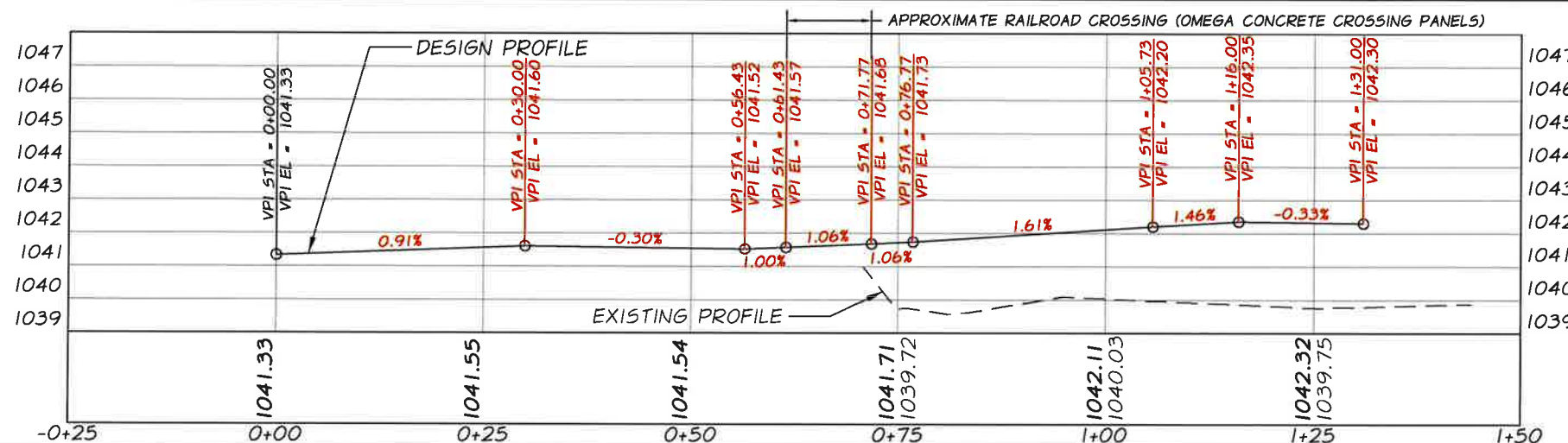
REVISION:

RRI(B)  
RAILROAD  
ALIGNMENTS  
& PROFILES

SHEET 44B OF 171  
SUPPLEMENTAL

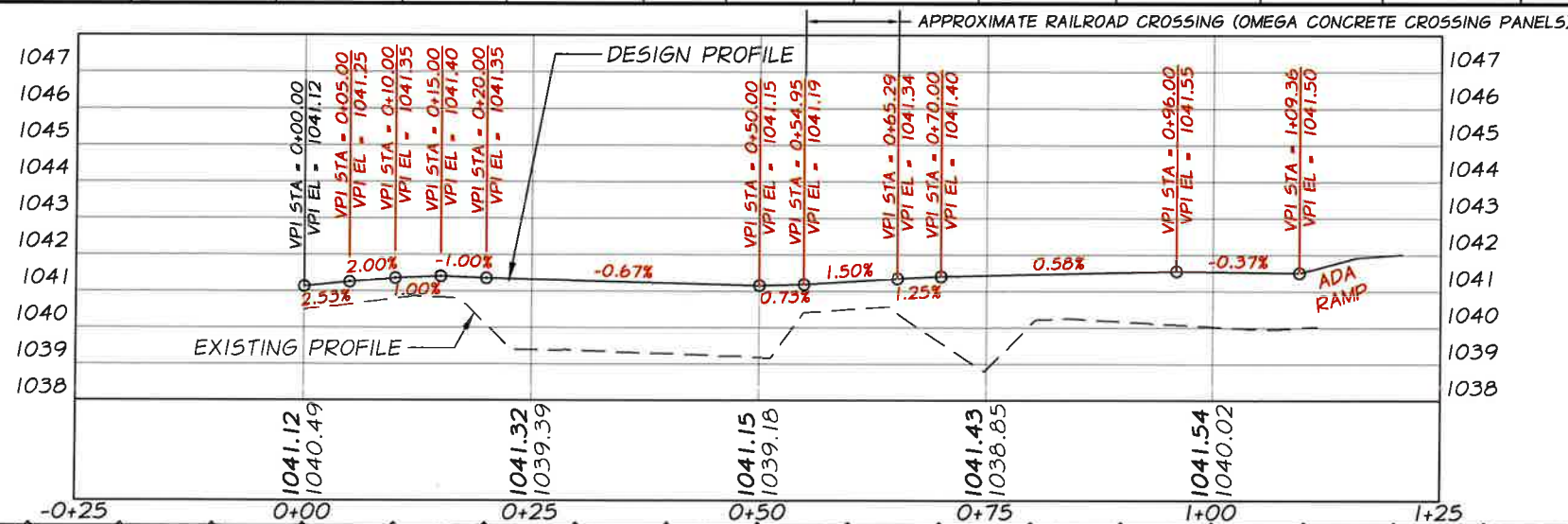
RAILROAD BACK OF WALK - LEFT

PI STATION	PI NORTHING	PI EASTING	DIRECTION	DISTANCE	DELTA ANGLE	RADIUS	ARC LENGTH	PC STATION	PC NORTHING	PC EASTING	PT STATION	PT NORTHING	PT EASTING
0+00.00	466816.5139	1647069.7308	N65°47'30"E	22.23									
0+31.37	466829.3783	1647098.3441	N47°04'51"E		37°25'17"	27.00	17.63	0+22.23	466825.6285	1647090.0037	0+39.86	466837.4246	1647102.6894
0+39.86	466837.4246	1647102.6894	N28°22'13"E	1.59									
0+45.91	466842.7473	1647105.5638	N37°45'10"E		18°45'53"	27.00	8.84	0+41.45	466838.8218	1647103.4439	0+50.29	466845.7822	1647108.8337
0+50.29	466845.7822	1647108.8337	N47°08'06"E	39.33									
0+94.19	466875.6452	1647141.0095	N56°45'04"E		19°13'56"	26.99	9.06	0+89.62	466872.5343	1647137.6577	0+98.68	466877.4784	1647145.1990
0+98.68	466877.4784	1647145.1990	N66°22'02"E	11.75									
1+14.66	466883.8833	1647159.8360	N57°28'46"E		17°46'11"	27.02	8.38	1+10.43	466882.1900	1647155.9669	1+18.81	466886.6766	1647163.0038
1+31.45	466895.0875	1647172.4328	N49°19'11"E		2°06'26"	687.06	25.27	1+18.81	466886.6766	1647163.0038	1+44.08	466903.1460	1647182.1647



RAILROAD BACK OF WALK - RIGHT

PI STATION	PI NORTHING	PI EASTING	DIRECTION	DISTANCE	DELTA ANGLE	RADIUS	ARC LENGTH	PC STATION	PC NORTHING	PC EASTING	PT STATION	PT NORTHING	PT EASTING
0+00.00	466781.5941	1647132.7534	N44°24'31"E	8.38									
0+13.51	466791.2482	1647142.2103	N54°12'58"E		19°36'52"	29.68	10.16	0+08.38	466787.5831	1647138.6200	0+18.54	466793.4955	1647146.8226
0+18.54	466793.4955	1647146.8226	N64°01'24"E	10.95									
0+33.46	466800.0289	1647160.2319	N55°34'45"E		16°53'18"	26.69	7.87	0+29.50	466798.2932	1647156.6695	0+37.37	466802.7246	1647163.1364
0+37.37	466802.7246	1647163.1364	N47°08'06"E	38.65									
0+80.38	466831.9885	1647194.6667	N37°56'10"E		18°23'53"	27.00	8.67	0+76.01	466829.0140	1647191.4618	0+84.68	466835.8225	1647196.7690
0+84.68	466835.8225	1647196.7690	N28°44'13"E	11.29									
1+00.86	466850.0092	1647204.5479	N39°00'38"E		20°32'50"	27.00	9.68	0+95.97	466845.7181	1647202.1950	1+05.65	466853.2015	1647208.2572
1+08.48	466855.0452	1647210.3995	N49°31'14"E		0°28'21"	685.54	5.65	1+05.65	466853.2015	1647208.2572	1+11.30	466856.8712	1647212.5570



DRIVEWAY 26' DEPRESSION  
VPI = 0+96.00  
EL = 1041.55  
VPI = 1+09.36  
EL = 1041.50