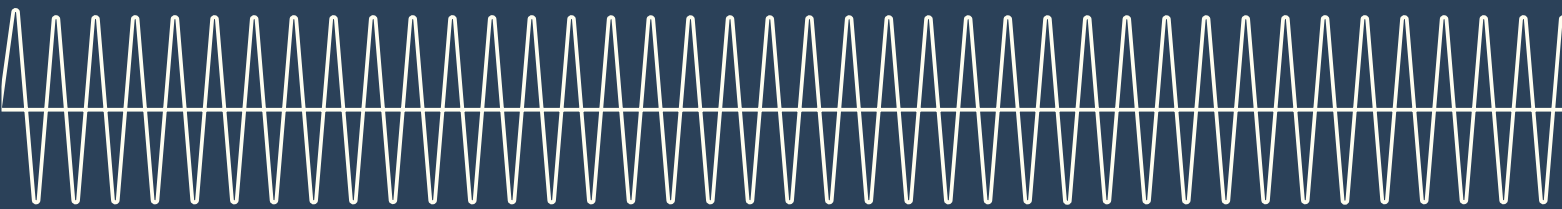


# Portland General Electric Municipal Charging Collaboration

2024



# PGE at a Glance

## Quick Facts

Vertically integrated electric utility

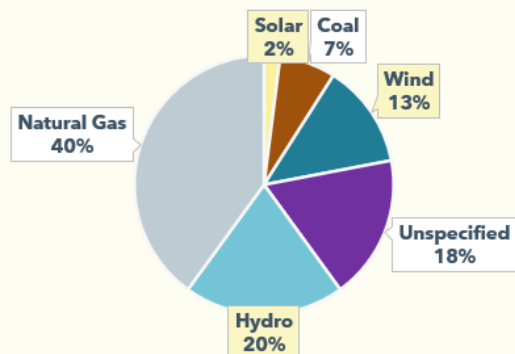
- Generation
- Transmission
- Distribution

~ 900K retail customers (2 million residents)

~ 75% state's commercial & industrial

~ 50% state's pop. (51 incorp. cities)

## 2021 Resource Mix



35% of power served to customers came from non-emitting energy resources

## 3,300+ MWs of Generation



# What is the Municipal Charging Collaboration?



PGE collaborates with municipalities to provide equitable public Level 2 charging in underserved communities through pole-mounted and curbside chargers on public streets.



Increasing access to chargers promotes EV adoption. In turn, more EVs on the road helps Oregon and its municipalities decarbonize their transportation sectors.

# Portland General Electric

## Pole Charging 101



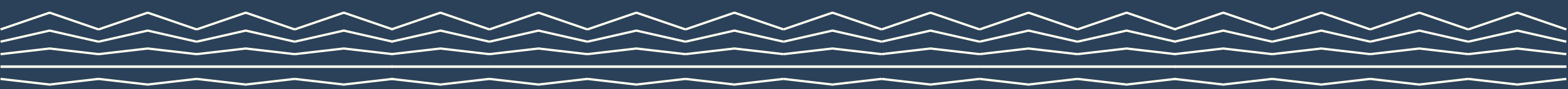
# Why Muni Charging Collaboration?

- ❖ Providing equitable, reliable access to public charging near residences in underserved communities\*.

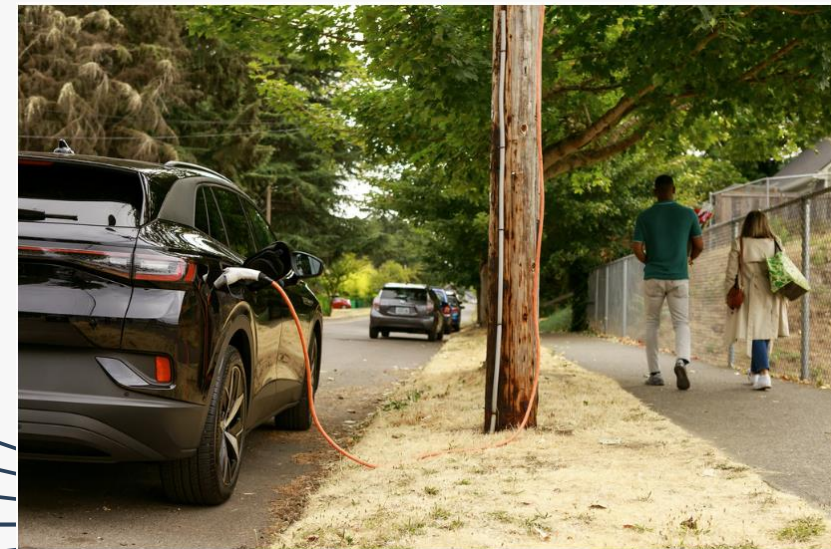
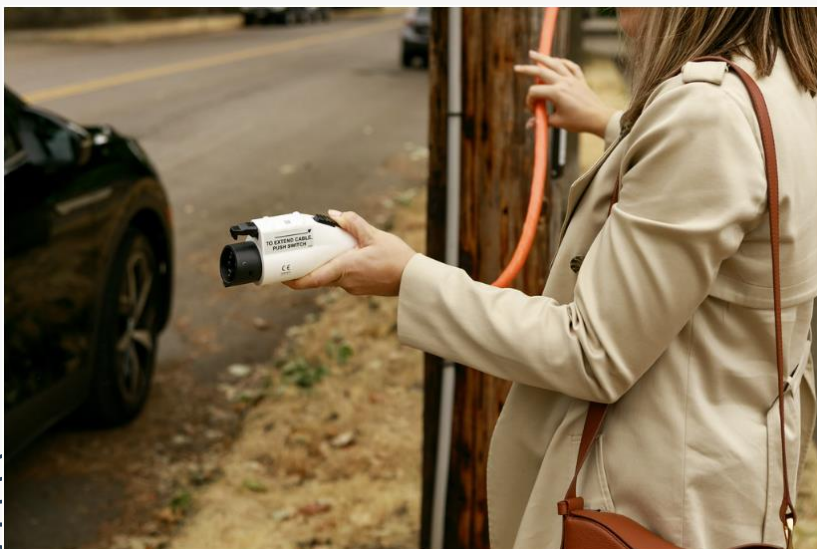
In a PGE's survey:

- 44% of multifamily residents and 32% of single-family housing residents responded that they were more likely to consider an EV if they had access to a pole charger
- Of customers who said they had no access to off-street parking, those numbers increased to 55% & 48% respectively

\*Underserved communities is defined by HB2165: residents of rental housing, multifamily housing, communities of color, communities experiencing lower incomes, tribal, rural, frontier, and coastal communities, and communities adversely harmed by environmental and health hazards.



# What is a "Pole Charger"?



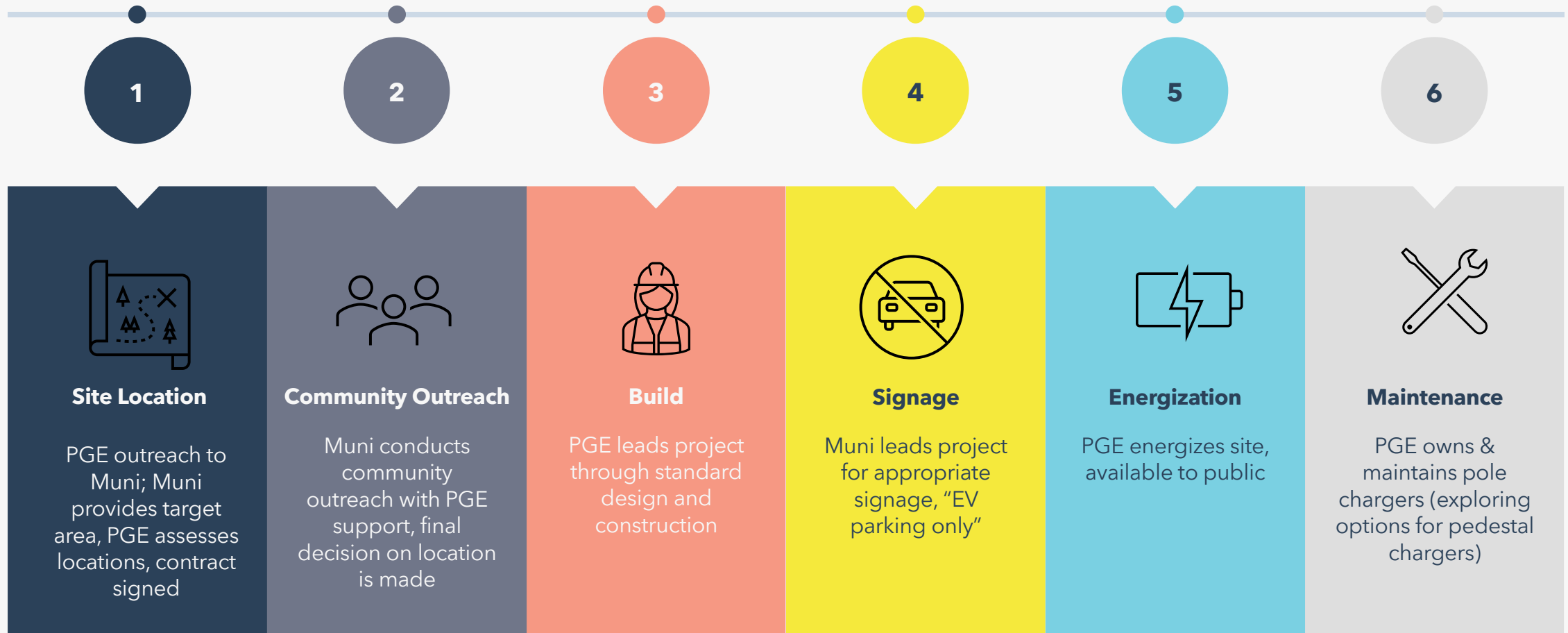
# “What is Curbside Charging?”

## Curbside Charging Examples:



# How does the program work?

PGE owns, installs, operates, and maintains the pole and curbside chargers. The price is set to a rate that is close to parity with the cost to charge at a single-family home (\$3 for a four-hour session.) The cities are responsible for community outreach and signage.





# Location Selection

As committed in our TE Plan, chargers need to be in areas that meet HB2165 underserved communities' definition and are nearby:

- Residents of rental housing
- Residents of multifamily housing
- BIPOC communities
- Communities experiencing lower income (less than or equal to 120% of state median income)
- Communities adversely harmed by environmental and health hazards
- Tribal communities
- Rural communities
- Frontier communities
- Coastal communities



# Challenges

- Good poles are hard to find!
- Municipalities cannot always move quickly
- Contracting can take a long time
- OPUC safety staff review took time
- Current charging software vendor has been difficult to work with, slow to respond and to commission chargers
- “Not in my backyard” mentality: worried about parking, increased traffic, vandalism

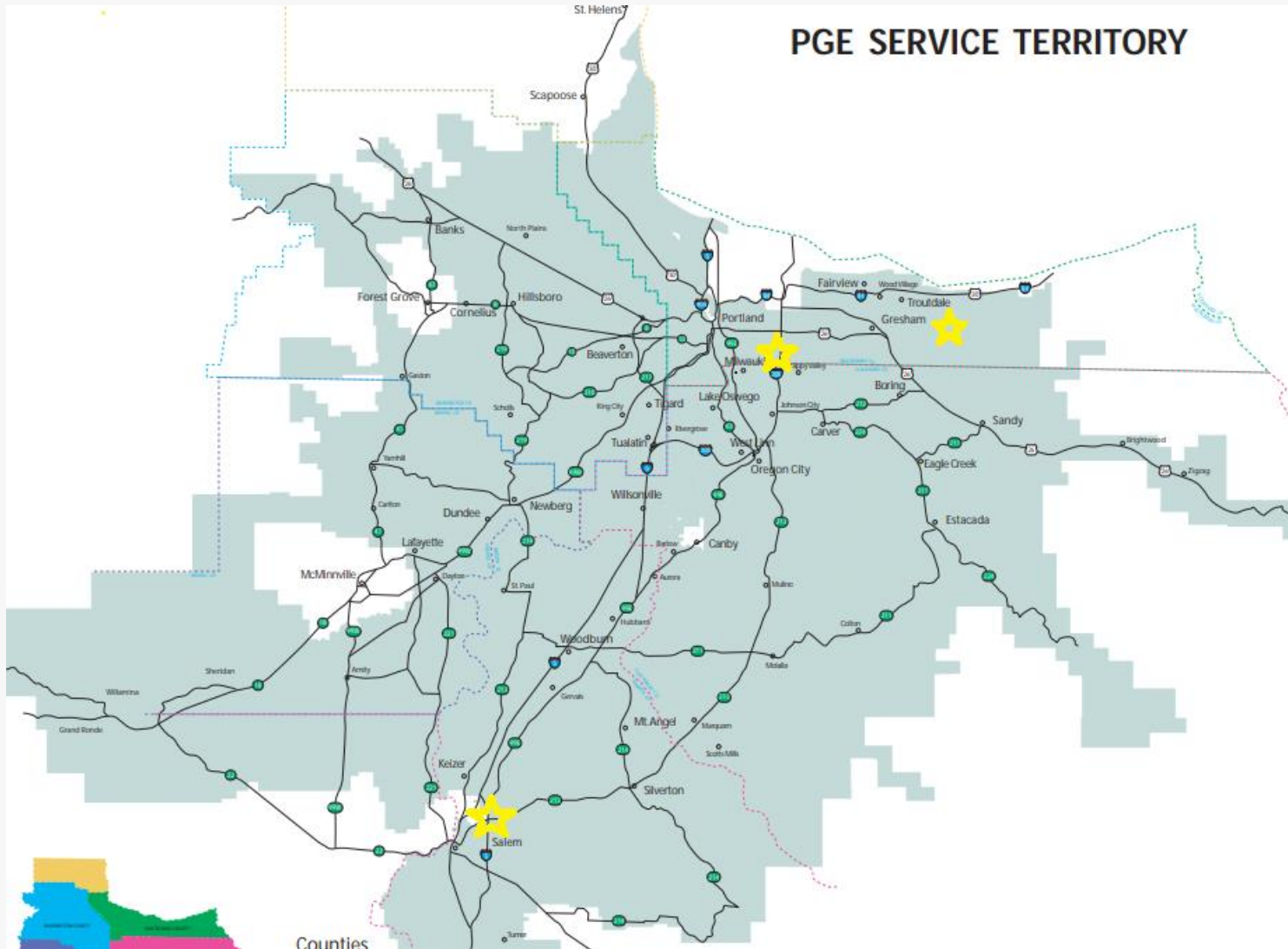


# Successes

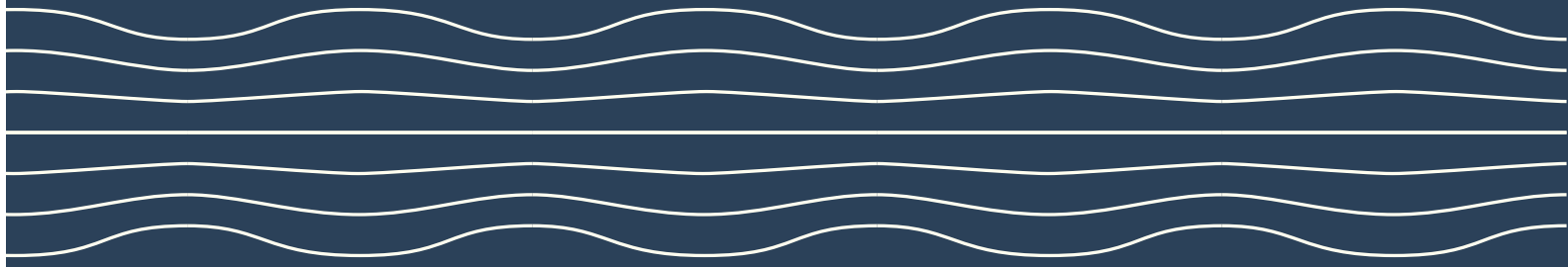


- It's still very early in our program!
- Some cities are extremely excited about the effort
- Utilization is increasing as more chargers come online
- Surveys indicate that 50% of residents feel positively about charging in their neighborhood
- Surveys indicate that 19% of residents were "very likely" to purchase an EV for their next vehicle.

# Locations/Coming Soon



- Milwaukie, OR (15)
- Gresham, OR (10)
- Salem, OR (30)
- More coming soon!



Questions?