

Cascade & Columbia River Railroad
Signal Upgrades Funded by Washington
Utilities and Transportation Commission
Grade Crossing Protection Fund

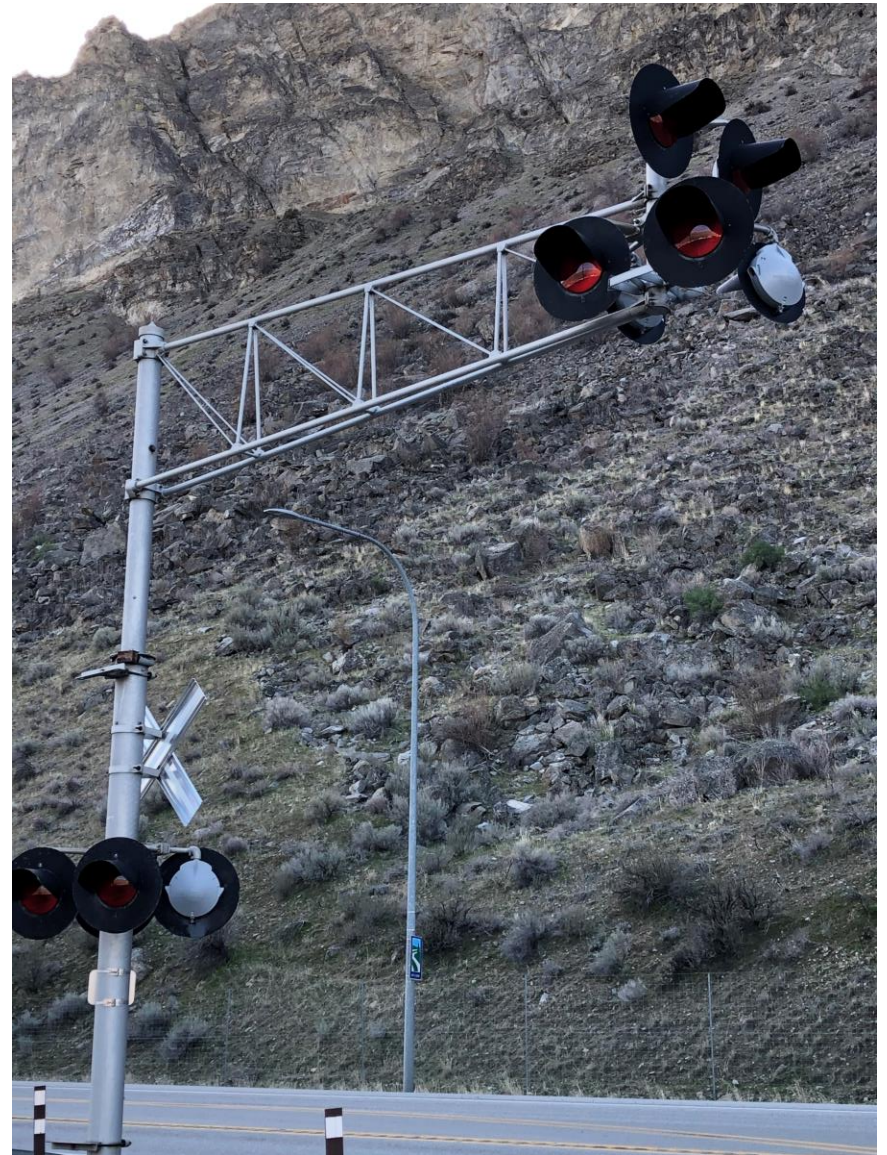
Photos of Completed Work

By Kevin Saville, Signal Maintainer,

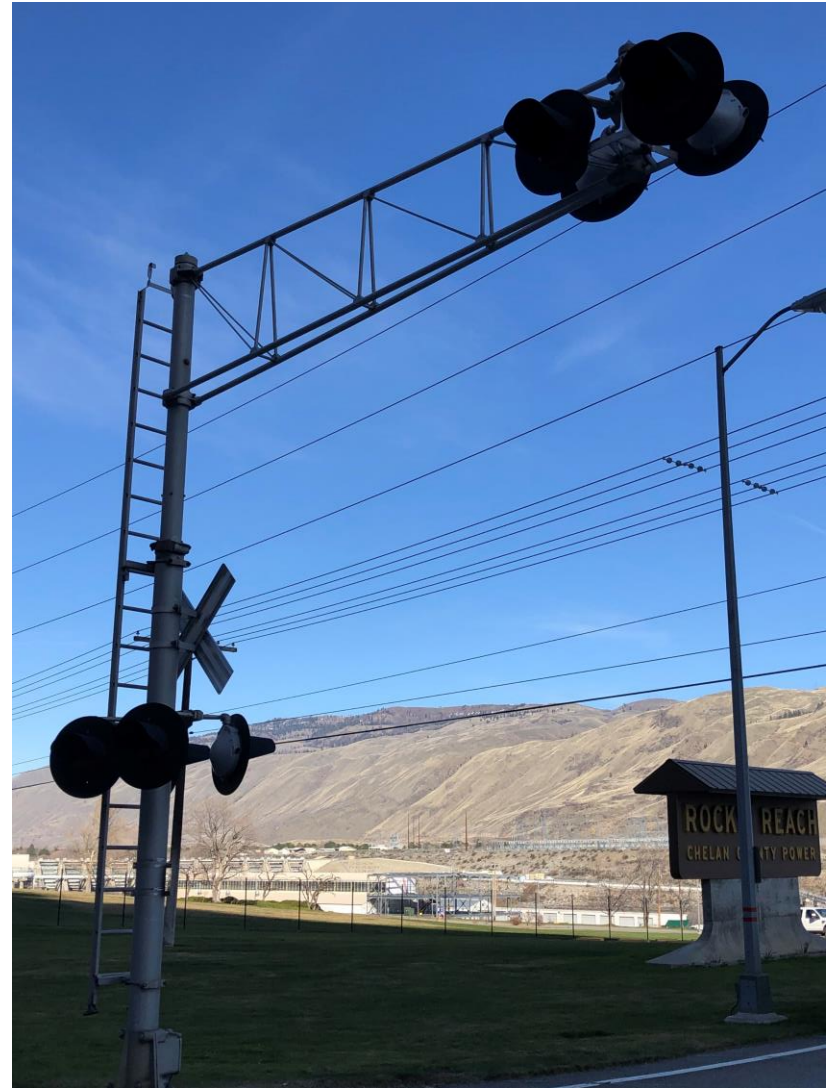
Installer of All Items: LED Lights, Gates, & Crossbucks

Work Completed 24 April 2021

ROCKY REACH DAM ROAD, 065855E, Docket TR-190781, Eastbound Signal



ROCKY REACH DAM ROAD, 065855E, Docket TR-190781, Westbound Signal



A STREET, CHELAN FALLS, 096221T, Docket TR-190782, Eastbound



A STREET, CHELAN FALLS, 096221T, Docket TR-190782, Westbound



WELLS DAM / AZWELL ROAD, 096239D, Docket TR-190783, Eastbound Signal



WELLS DAM / AZWELL ROAD, 096239D, Docket TR-190783, Westbound Signal



7TH STREET BREWSTER, 096259P, Docket TR-190794, Northbound Signal



7TH STREET BREWSTER, 096259P, Docket TR-190794, Southbound Signal



E. LAKE ROAD SOUTH, OROVILLE, 096382N, Docket TR-190800, Both Signals



E. LAKE ROAD NORTH, OROVILLE, 065862P , Docket TR-190801, Both Signals



****END****