

December 10, 2004

**NOTICE OF ISSUANCE OF BENCH REQUEST NOS. 24 AND 25  
(Responses due on or before December 22, 2004)**

RE: In the Matter of the Review of Unbundled Loop and Switching Rates and  
Review of the Deaveraged Zone Rate Structure  
Docket No. UT-023003

TO ALL PARTIES:

The Commission issues the following Bench Request No. 24 to AT&T:

Please provide detailed step-by-step instructions explaining how to map the output from the cost model(s) AT&T has sponsored in this proceeding to each UNE rate element for which AT&T has provided a cost estimate.

The Commission issues the following Bench Request No. 25 to Verizon:

Please provide detailed step-by-step instructions explaining how to map the output from the cost model(s) Verizon has sponsored in this proceeding to each UNE rate element for which Verizon has provided a cost estimate.

Please provide responses to these requests on or before December 22, 2004.

Sincerely,

THEODORA M. MACE  
Administrative Law Judge

## **RESPONSE TO BENCH REQUEST NO. 25:**

There are several options for mapping the output from the VzCost model to the UNE rate elements for which Verizon NW has provided costs in this proceeding, and these are explained below. All of these options are available with the online VzCost system or are provided with Verizon NW's filings.

### **I. REPORTS**

Although there are various reports that can be run against filings, there are two particular reports that directly map the UNE cost and rate elements to the outputs from VzCost: (1) the Recurring Cost Summary Results Report (Filing\_TotalRecurringCost\_Summary DirShare\_062003.rpt) and (2) the VzCost Study Index Report (Filing\_VZCostStudyIndex\_052003.rpt). All reports that are available within the document sets can be run against a filing online. Additionally, both of the above discussed reports have been run against the WA Generic UNE filings and have been provided within the document sets and on the CDs filed in this proceeding. Furthermore, these reports can be run against a copy of the user's own filing if changes are applicable. A user can run reports against a filing or cost study by accessing the "Reports" section from the VzCost Home Page, under the "Analysis" Module. Detailed instructions on how to run reports are attached to this response.

#### **Total Recurring Cost Summary Report (Filing\_TotalRecurringCost\_SummaryDirShare\_062003.rpt)**

The Total Recurring Cost Summary Results Reports provided with Verizon NW's filing are directly linked to the cost studies online. When a user runs a report against a filing, the output from the VzCost model is automatically mapped and linked from the filing to the reports. The Total Recurring Cost Summary reports produce the results from each of the cost studies within one report when run against a filing. This report has been run and filed with the WA Generic UNE UT-023003 docket and is available online and has been provided with the CDs as well as exhibits to testimony.

#### **Cost Study Index Report (Filing\_VZCostStudyIndex\_052003.rpt)**

The second report is the VzCost Study Index Report. This report includes the UNE rate elements, cost templates, and cost studies associated with a filing. This report has also been run, filed, and provided in Verizon NW's filings. See the instructions on how to run reports provided with this response.

### **II. VIEW DEPENDENCIES ASSOCIATED WITH A FILING**

A user can view all of the filing dependencies, including feeder information, associated with a particular filing online. This includes the cost templates, cost studies, BCs, data versions, and document sets. A user can utilize the "View Dependency" function by accessing the Home Page within VzCost, selecting the "Filings" section under the

Coster module, highlighting a particular filing, and pressing the “View Dependents” button. A user also has the ability to drill down on the dependencies within that screen. A user can also view the values within a particular cost study, along with its results within that filing, by selecting a specific cost study associated with a filing and using the drill down function on each of the values. Please note that this information is all available online for this filing.

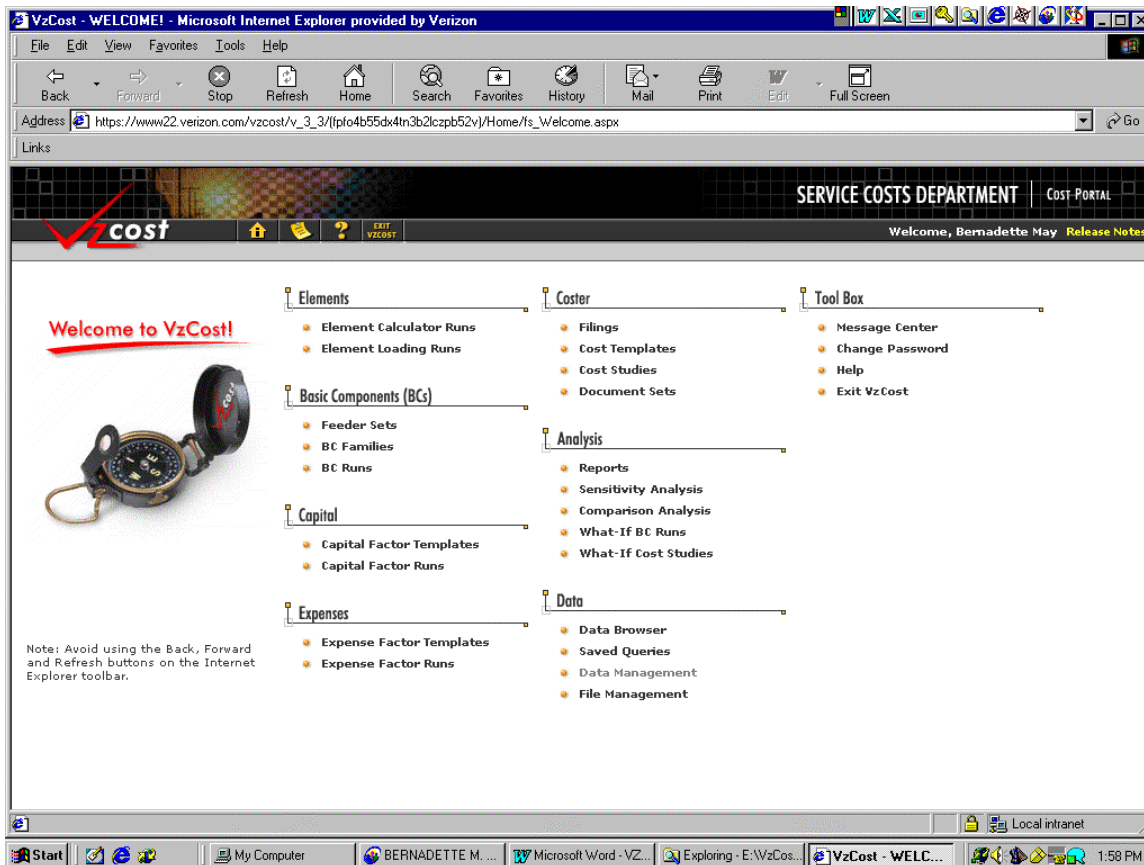
The attached instructions explain step by step how to access and run the reports discussed above. Note: Prior to running a report, if changes have been made to the assumptions or templates within a filing, the filing should be rerun in order to have any changes accepted to the filing. Although Verizon NW is attaching instructions on how to run reports against filings, this information can also be found on the CD provided with this response, which contain the latest VzCost User Manual. While later versions of the VzCost User Manuals have been provided in Verizon NW’s response to Data Request No. 6-005 and with Verizon NW’s initial filing in June 2003, on CD No. 1, folder labeled “VzCost Systems Manuals,” subfolder “VzCost User Guide,” document named “Exhibit RP-16 VzCost Users Manual v2.4.4.zip,” the attached documents contain the most up to date information.

Please note that the only UNE elements that do not have cost studies associated with them are the 2 and 4 Wire xDSL UNE elements. The costs and rates for these elements are the same as the 2 and 4 Wire UNE loop rate and cost elements.

## Running Reports Against a Filing:

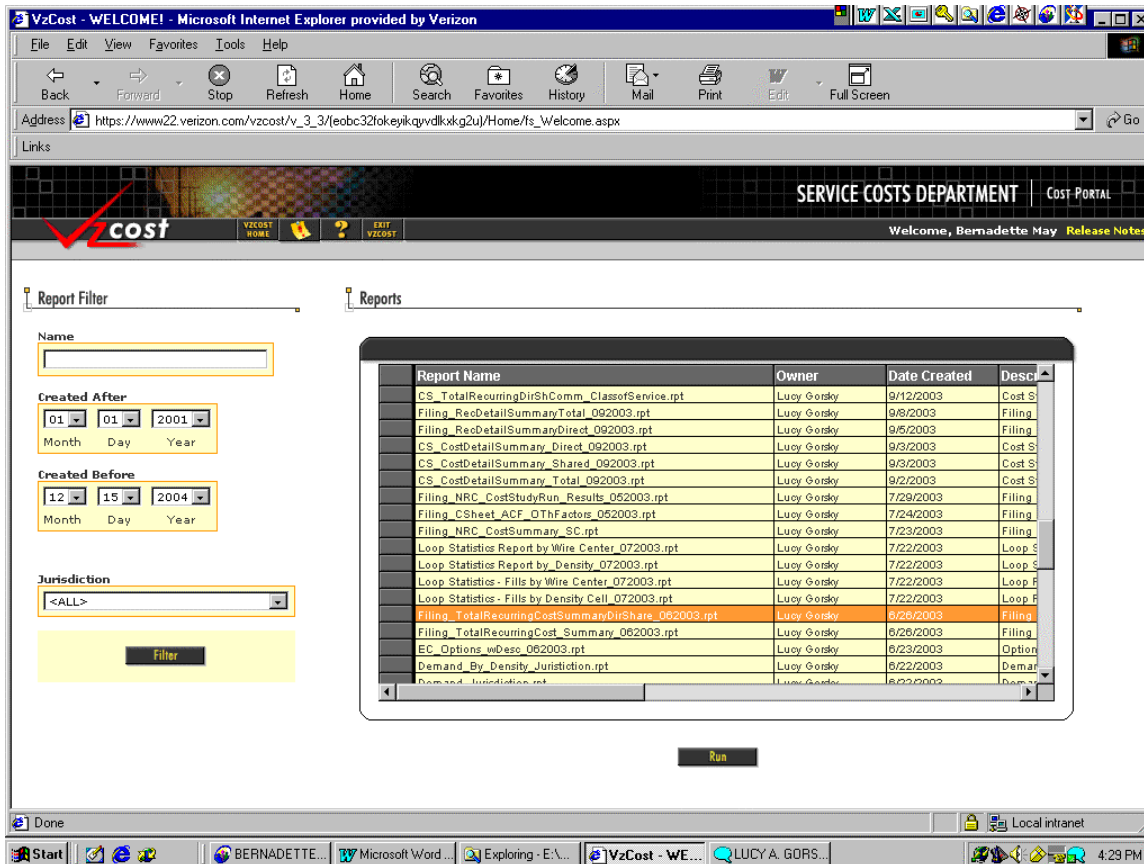
Standard Report shells have been created and are available in the system for use with Cost Studies and Filings.

To run a report against a Filing, access the VzCost Home Page. You will need to enter your User ID and Passcode before accessing the home page.



## VzCost Home Page

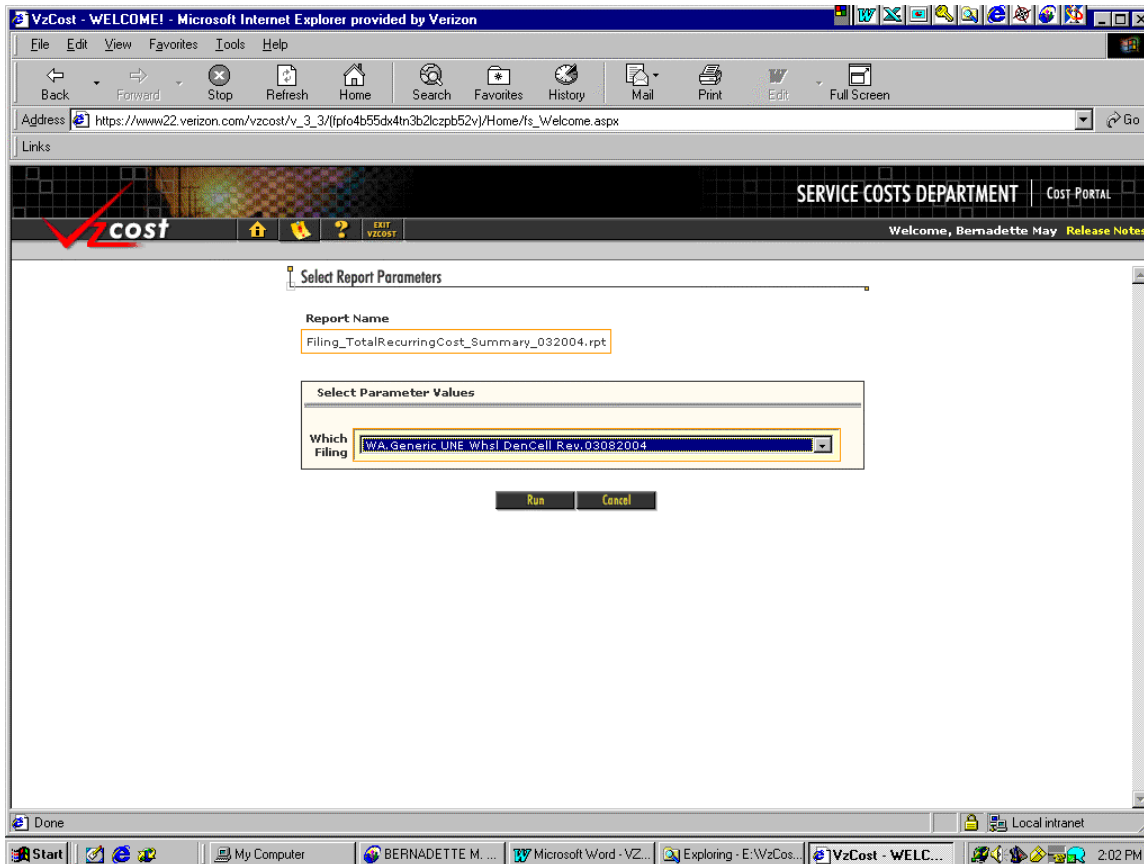
From the Home Page, select "Reports," under "Analysis."



## Reports Page

The Reports page lists all the available report shells within a particular filing and Document set that are available.

In order to run the Recurring Cost Summary Results or the VzCost Study Index reports, which include the costs and rate elements for Verizon's filings, Highlight the "Filing\_TotalRecurringCost\_SummaryDirShare\_062003.rpt" or the "Filing\_VZCostStudyIndex\_052003.rpt," and then select "Run." These reports are run in order to link the UNE rate/cost elements to the cost studies within the filings, automatically. It can also be run against a particular cost study within a filing.



## Select Report Parameters Page

From the “Select Report Parameters Page” the user selects the Filing for which the reports can be run.

In order to link either report to a filing, Select the appropriate filing name and then Select “Run.”

Selecting “Cancel” will return to the prior page without having made a study selection.

The report will run against the selected Filing and automatically link the results from the cost studies within the filing. After it is completed running, the results will be displayed as a PDF file. On some PCs users will be asked if they want to open the file or save it to disk. You can also print the report if applicable.

Once you have completed running your report and either opening it or saving it, you can close the Reports Page by clicking on the “X” in the upper right corner.