

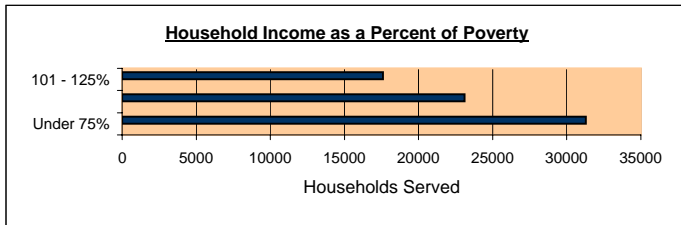


## 2005 Statewide Energy Assistance Statistics

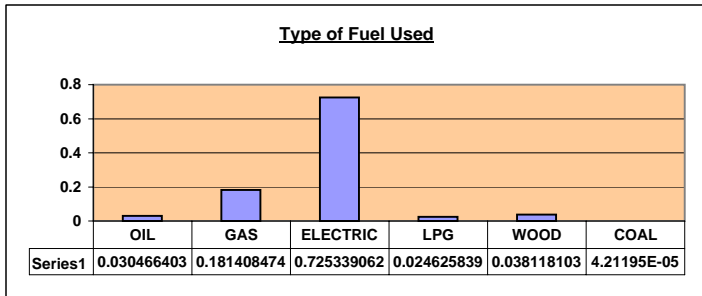
Number of Households Assisted	
Energy Assistance	71,226
Other Emergency Services	687
<b>Total Households Assisted</b>	<b>71,913</b>

The average EAP benefit:	<b>\$350.36</b>
--------------------------	-----------------

Percentage of Households With Income Under:	
\$5,999	19.4%
\$7,999	44.7%
\$9,999	57.0%
\$11,999	70.6%



Eligibility - 125% of Poverty		
Household Size	Monthly	Annual
1	\$970	\$11,225
2	\$1,301	\$15,150
3	\$1,632	\$19,075
4	\$1,964	\$23,000
5	\$2,295	\$26,925



Status of Household Income As a Percent of Poverty	
Less Than 75%	43.5%
76% to 100%	32.1%
101% to 125%	24.4%
<b>Total</b>	<b>100%</b>

Percent of Targeted Outreach Households Served					
Children by age groups					
Elderly	Disabled	Birth to 2	3 to 5	6 to 17	Birth to 17
16.4%	24.9%	16.3%	18.4%	36.5%	71.7%

