

2023 Wildfire Season Recap

November 21, 2023



Topics covered



- ◆ Updates to the Wildfire Mitigation and Response Plan
- ◆ Preparation for 2023 wildfire season
- ◆ Communication and outreach
- ◆ New risk model
- ◆ Red flag warnings, fires, and response
- ◆ Focus areas for 2024

2023 Wildfire Plan updates



- ◆ Updated risk model and outage model
- ◆ New objective that embeds equity
- ◆ Matured wildfire response plans
- ◆ New standards for use in higher wildfire risk areas
- ◆ Charter for PSE's Wildfire Mitigation Task Force
- ◆ Key wildfire mitigation performance metrics
- ◆ Process for capturing ignition data

Preparation for 2023 wildfire season



- ◆ Targeted patrols and proactive repairs on higher risk overhead distribution and transmission lines
- ◆ Improvements made to operational procedures
- ◆ Front-line employee training and field readiness
- ◆ Strengthened partnerships with peer agencies
- ◆ Customer engagement on wildfire mitigation strategies

Communication & outreach

5 | 2023 Wildfire Season Recap

- ◆ June education campaign for all PSE customers, with focused communication with selected audiences
- ◆ Updated information on all platforms
- ◆ Community engagement and education on PSPS development
- ◆ Community events, including DNR Wildfire Ready Neighbors



The latest news on what's powering our neighborhoods



Vegetation management and wildfire risk

Over the past decade, wildfires have emerged as a significant public health and safety concern for much of the Western United States. Puget Sound Energy's Wildfire Mitigation and Response Program includes our year-round efforts to prepare for and help prevent wildfires in PSE's service area.

Vegetation management is an important element of our Wildfire Program. Trees and other vegetation that grow too close to power lines, when combined with fire weather conditions, can increase the risk of wildfire starting and spreading. PSE regularly inspects power lines throughout our service area and trims or removes vegetation that encroaches on power lines. In areas of higher wildfire risk, we inspect these lines every year prior to the start of wildfire season.

How you can help reduce wildfire risk

We need your help to maintain healthy trees and vegetation while reducing fuel sources and wildfire risk.

- **Create defensible space:** Clear brush or other flammable items from around your home.
- **Maintain trees on your property:** When trees are trimmed, they can become a hazard. However, if trim vegetation growing near power lines – only by professionals should do this work. Please contact us to send out a PSE-certified arborist to evaluate the trees at no cost to you.
- **Plant the right tree:** When landscaping, select fire-resistant plants and locate trees a safe distance from power lines and other equipment. Always call 811 before you dig to avoid potential injury, lines and the disruption of your gas service.
- **Report danger trees:** If you notice a tree that is close to power lines, please fill out our contact form and send out a PSE-certified arborist to investigate.

Learn more at pse.com/wildfirepreparedness.



Wildfire Mitigation and Response Program

Vegetation management and wildfire risk

Over the past decade, wildfires have emerged as a significant public health and safety concern for much of the Western United States. Puget Sound Energy's Wildfire Mitigation and Response Program includes our year-round efforts to prepare for and help prevent wildfires in PSE's service area.

PSE vegetation management

Vegetation management is an important element of PSE's Wildfire Program. Nearby potential fuel sources, such as trees and other vegetation that grow too close to power lines can also make contact with the lines or other equipment, causing outages and potentially creating sparks.

PSE regularly inspects power lines throughout our service area and trims or removes trees vegetation that encroaches on power lines. In areas of higher wildfire risk, we inspect these lines every year prior to the start of wildfire season.

How you can help reduce wildfire risk

We need your help to maintain healthy trees and vegetation while reducing fuel sources and wildfire risk.

Create defensible space: Clear brush or other flammable items from around your home. Check out resources from the Department of Natural Resources (DNR) for more information.

Maintain trees on your property: When trees are trimmaged, they can become a hazard. However, it is only to trim vegetation growing near power lines – only specially trained professionals should do this work. Please contact us and we'll send out a PSE-certified arborist to evaluate the trees and utility lines at no cost to you.

Plant the right tree: When landscaping, select fire-resistant plants and locate trees a safe distance from power lines and other equipment. Always call 811 before you dig to avoid potential injury, lines and the disruption of your gas service.

Puget Sound Energy

May 31 · 🌐

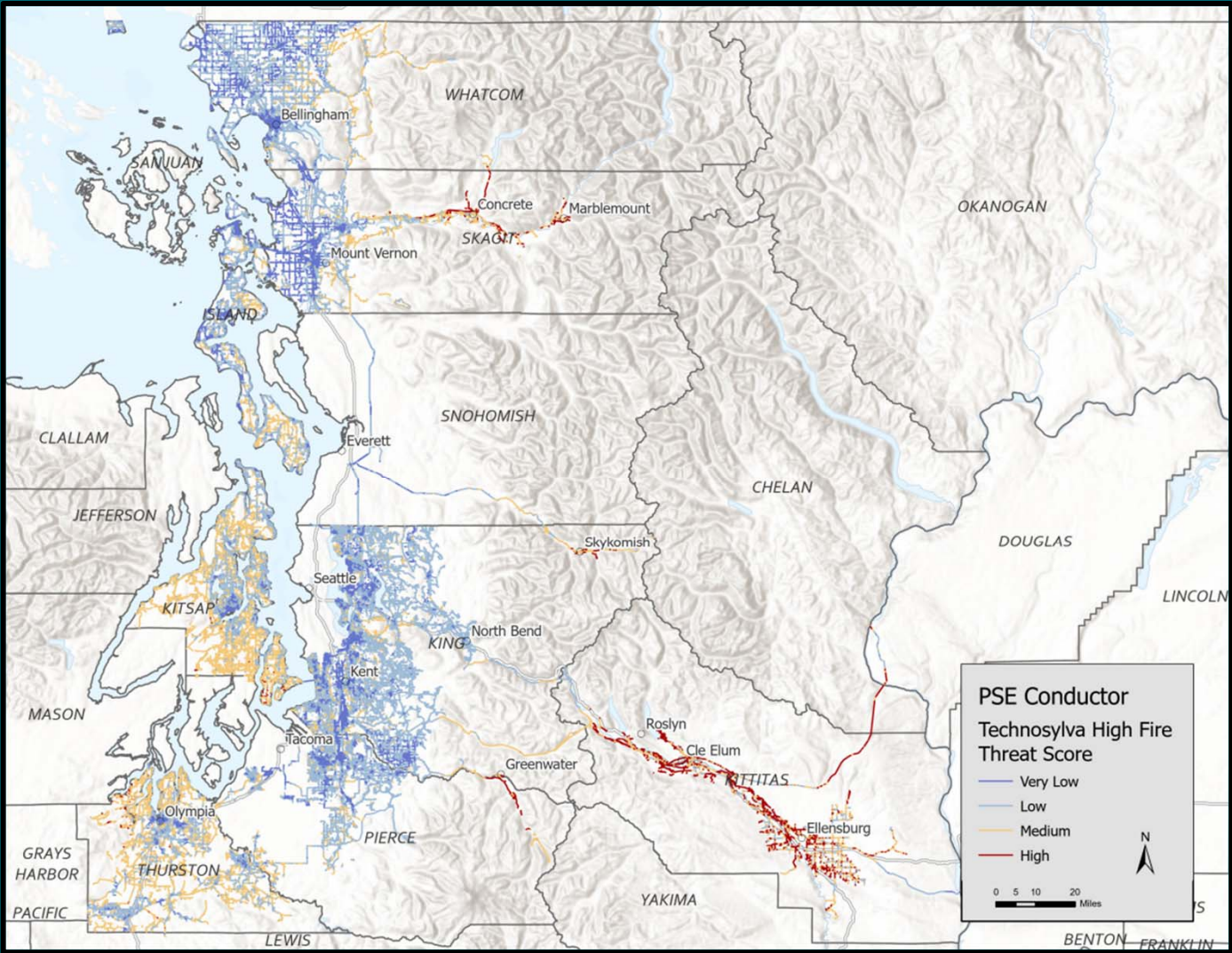
Are you working on spring landscaping? Remember to select fire-resistant plants and locate trees a safe distance from power lines and other equipment to help prevent fires. Check out our Energy Landscaping Guide for tips and resources to help you plant the right tree. <http://ms.spr.ly/6181g5PuB>

And remember, when you dig on your property for any reason, it's important to have the locations of underground utilities verified and clearly marked. Call 811 before you dig: <http://ms.spr.ly/6182g5Pu8>

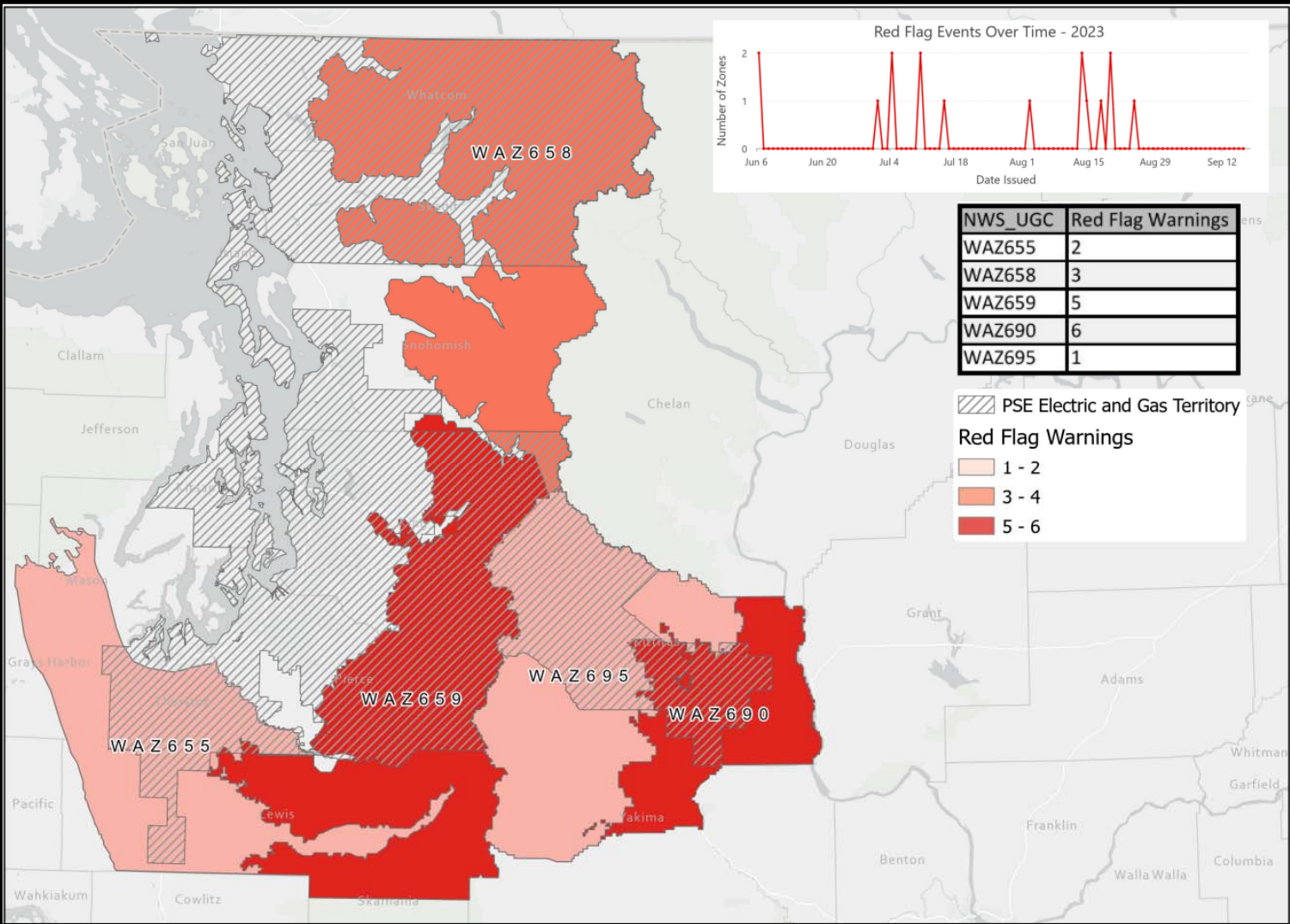


preparing for wildfire season ▶▶

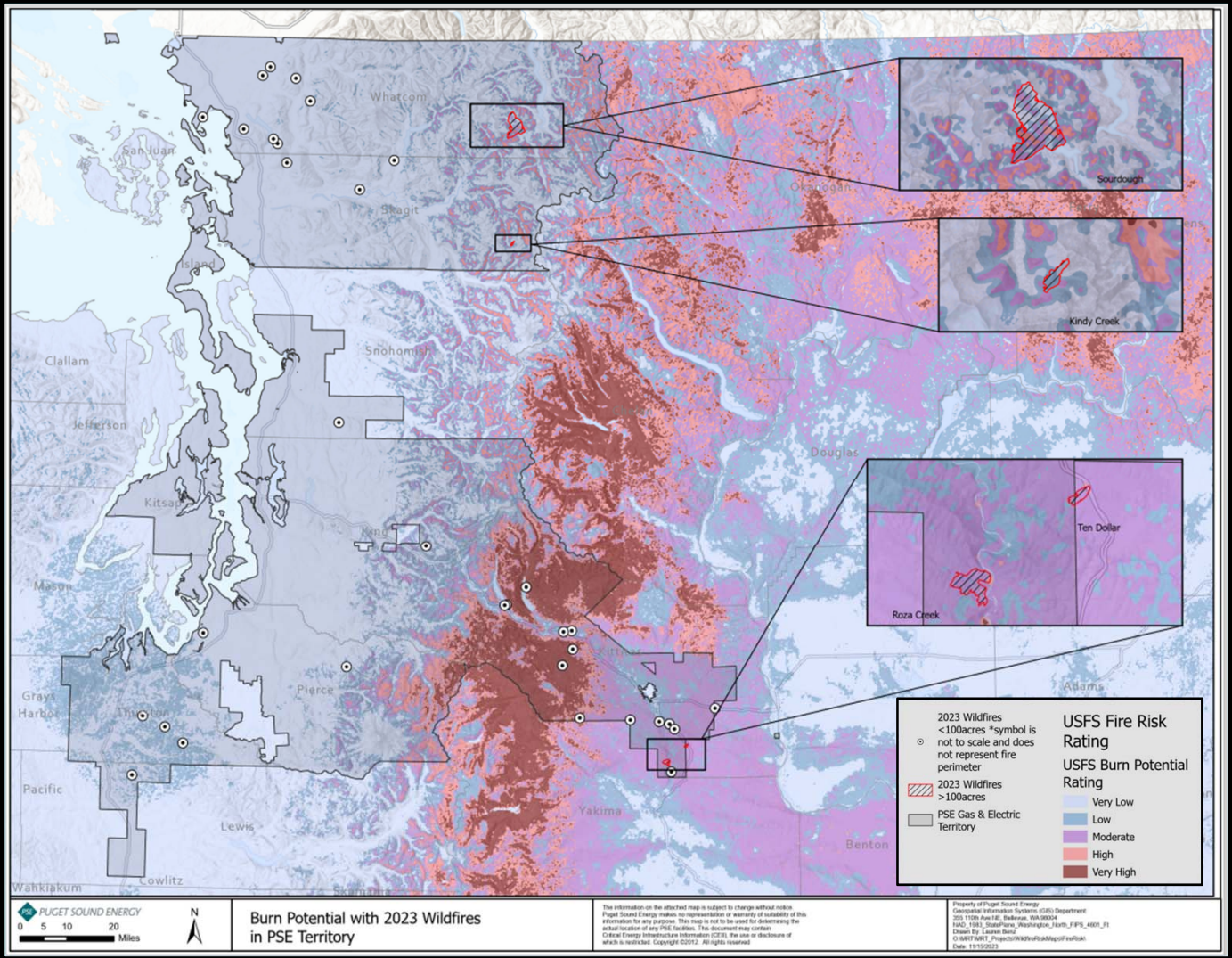
New risk model



Red Flag Warning



Wildfires and response



Focus areas for 2024



Operationalize new risk model



Implement situational awareness tools: real-time fire risk, high-definition cameras, weather stations and meteorologist resources



Evolve design and use of proactive electrical protection settings



Prepare to implement Public Safety Power Shutoff (PSPS) plan



Ongoing engagement and collaboration with industry peers



Continue grid hardening through an equity lens

Questions?

pse.com/wildfireplan
wildfire.response@pse.com

