



STATE OF WASHINGTON
WASHINGTON STATE PARKS AND RECREATION COMMISSION

SOUTHWEST REGION CAPITAL PROGRAM
1111 Israel Road • Olympia, WA 98504-2650 • (360)725-9750 Fax (360) 664-0312
<http://www.parks.wa.gov> - TDD: (360) 664-3133

May 9, 2011

Kathy Hunter, Deputy Assistant Director, Transportation Safety
Washington Utilities and Transportation Commission
PO Box 47250
Olympia, WA 98504-7250

RECEIVED
RECORDS MANAGEMENT
2011 MAY 16 AM 8:15
STATE OF WASH.
UTIL. AND TRANSP.
COMMISSION

RE: Willapa Hills Trail Rail Crossing Docket No. TR-090870

Ms. Hunter:

Washington State Parks needs to amend our previously submitted plans for the Willapa Hills Trail Crossing of the Port of Chehalis Rail Line approximately 1.1 miles west of the steam train station. The changes we made include:

1. Concrete crossing pads will replace the proposed rubber crossing pads.
2. The length of the crossing was changed to 16' because the concrete crossing pads are 8' long.
3. We changed the approach angle to reduce the amount of fill material and impact to the adjoining wetland.
4. The width of the asphalt paving will widen from the trail width of 8' to 16' to allow cyclist to chose their own travel path.
5. We added the chain link fence to provide better separation of trail users from the train.

If you have any questions regarding this matter, I can be reached at 360 725-9758.

Sincerely,


Robert G. Kirkwood, P.E.
Southwest Capital Program

NO.	REVISIONS	INT.	APP.	DATE

ACTION	BY	DATE
DESIGNED	AAA	01/01/01
DRAWN	HWL	04/27/11
CHECKED (FIELD)	AAA	04/27/11
CHECKED (HQ/ITS)	AAA	01/01/01

PROJECT ENGINEER

**WASHINGTON
STATE
PARKS
AND
RECREATION
COMMISSION**

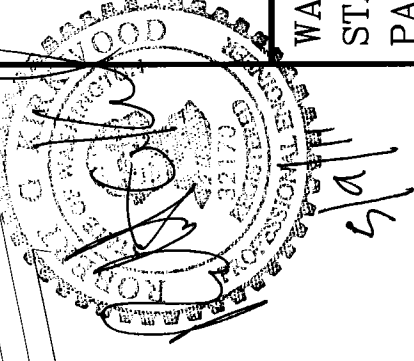
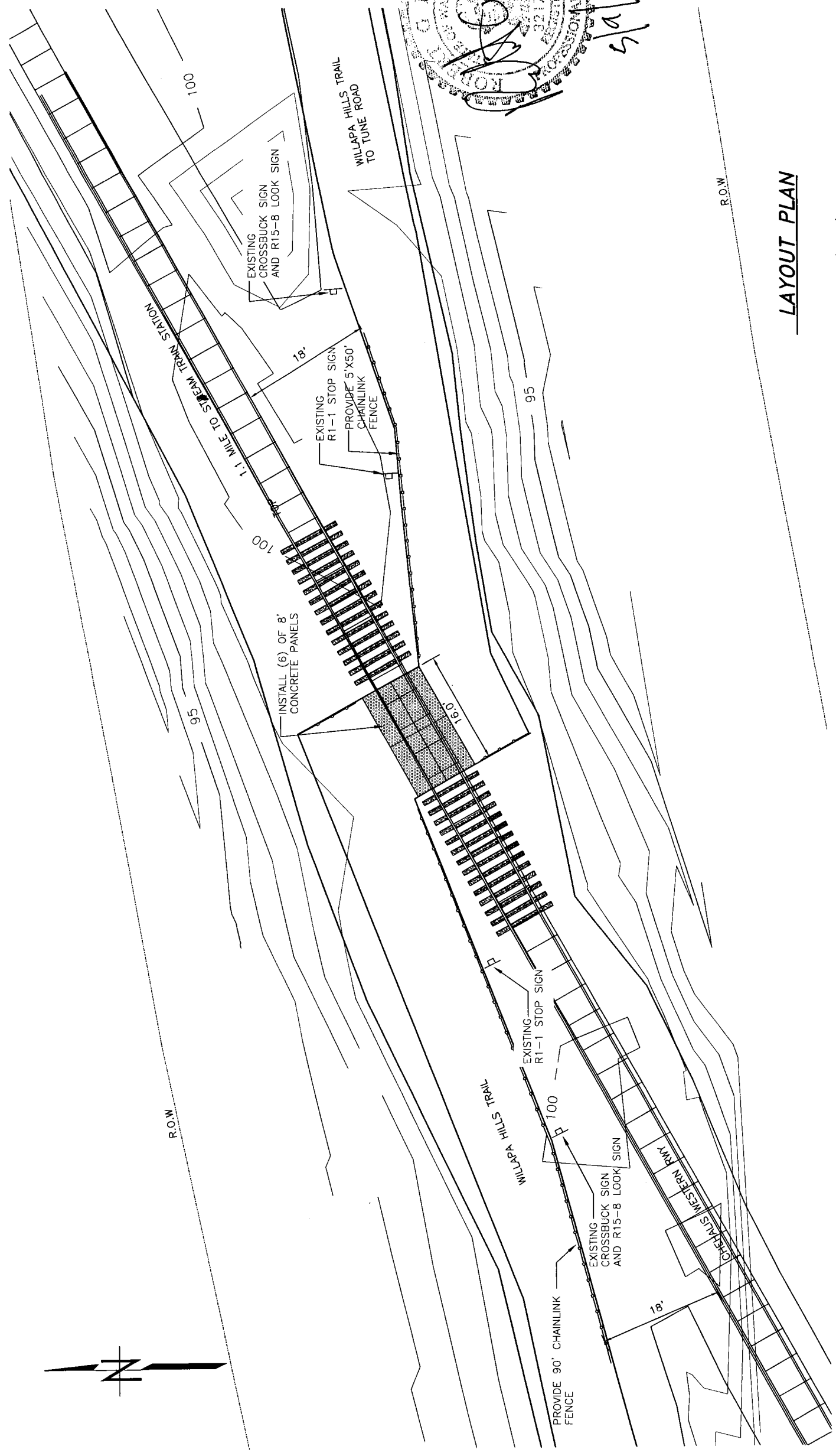


RAINBOW FALLS
STATE PARK -
WILLAPA HILLS
TRAIL

PAVING &
TRAILHEAD

WILLAPA HILL
TRAIL STEAM
TRAIN CROSSING

SCALE
AS SHOWN
FILE NO.



LAYOUT PLAN

(SCALE)
0' 4' 8' 16'