

Exh. ALB-2  
Docket UE-230172  
Witness: Allen L. Berreth

**BEFORE THE WASHINGTON  
UTILITIES AND TRANSPORTATION COMMISSION**

WASHINGTON UTILITIES AND  
TRANSPORTATION COMMISSION,

Complainant,

v.

PACIFICORP dba  
PACIFIC POWER & LIGHT COMPANY

Respondent.

Docket UE-230172

**PACIFICORP**

**EXHIBIT OF ALLEN L. BERRETH**

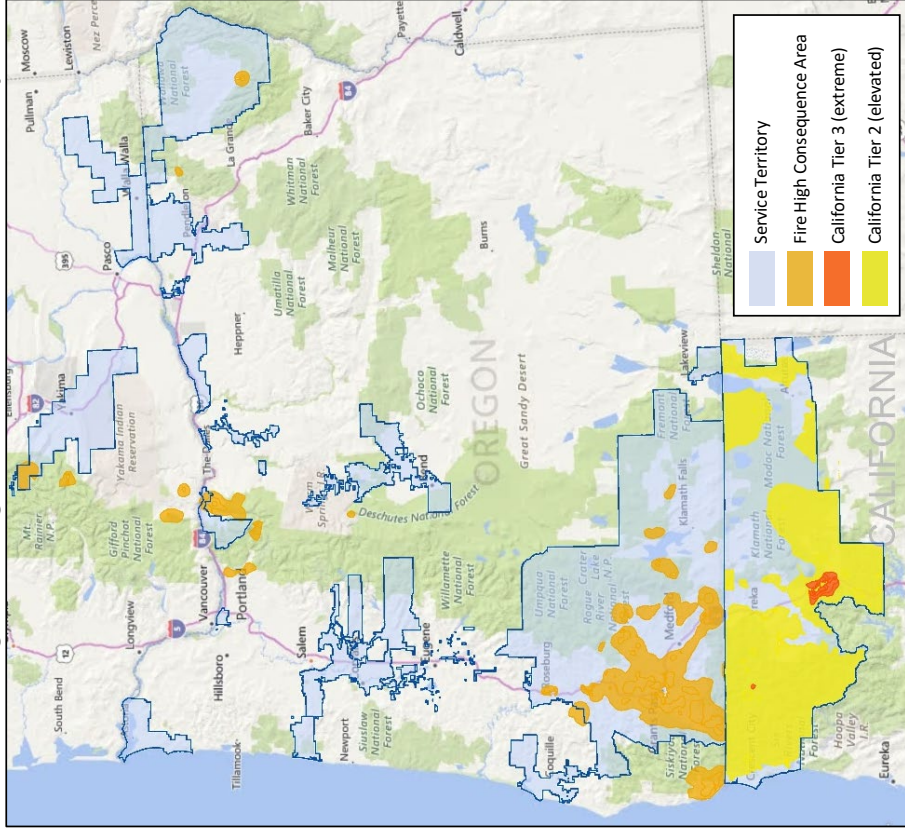
**PacifiCorp Service Territory with FHCA**

**March 2023 (REFILED April 19, 2023)**

## RISK-BASED APPROACH: Fire High Consequence Areas (FHCA)

- Utilizing the same modeling concepts used in California, areas were identified in the remaining PacifiCorp service territory where there is an elevated risk of utility-associated wildfires to **occur and spread rapidly**, and where communities face an elevated risk of damage or harm from wildfires
- Per state requirement in California, Tier 3 and Tier 2 are shown regardless if facilities exist in the area; making the impact of Tier 2 seem larger than it is
- A similar methodology was used to identify FHCAs
- FHCAs are used to prioritize wildfire mitigation initiatives, such as, increased inspections, system hardening and proactive de-energization

Washington, Oregon, California Service Territory





# RISK-BASED APPROACH: Fire High Consequence Areas (FHCA)

