



Wildfire Resiliency Fall Update

Washington Utilities and Transportation
Commission Open Meeting

David Howell, Director of Operations

November 21, 2023

Guiding Principles

- Promote public and worker safety around the impacts of wildfire
- Minimize service disruptions caused by wildfires and other extreme weather events
- Protect Avista from financial or reputational liability associated with wildfire



Presentation Agenda

Avista Wildfire Resiliency

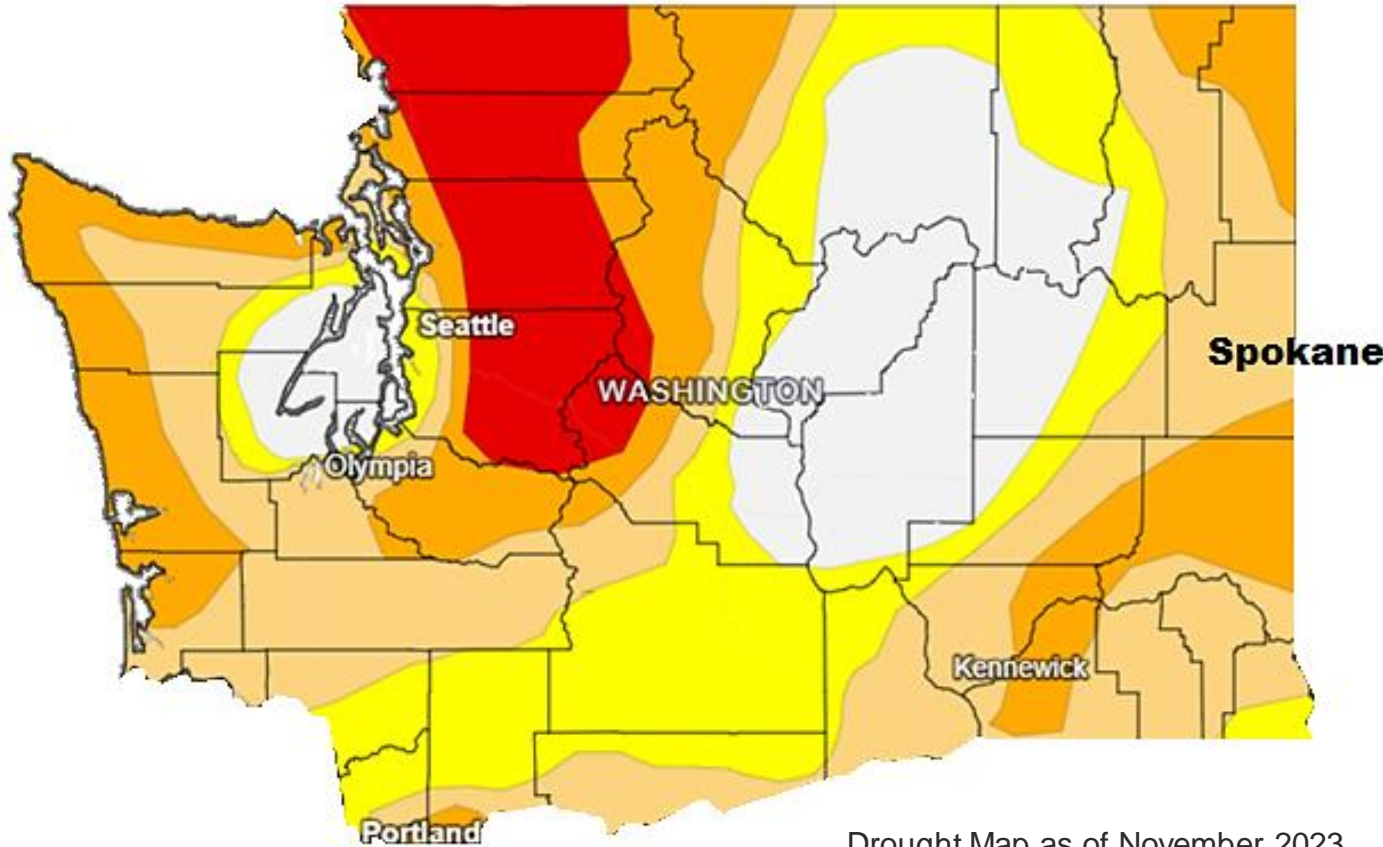


2023 Fire Season Review



2023 Washington Wildfire Conditions

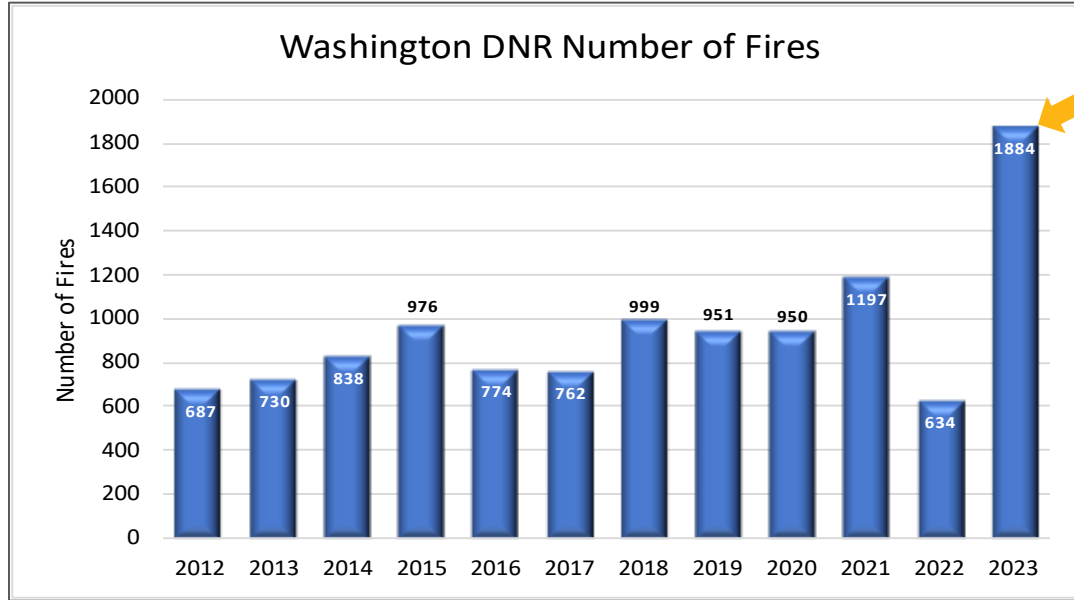
Washington Drought Conditions



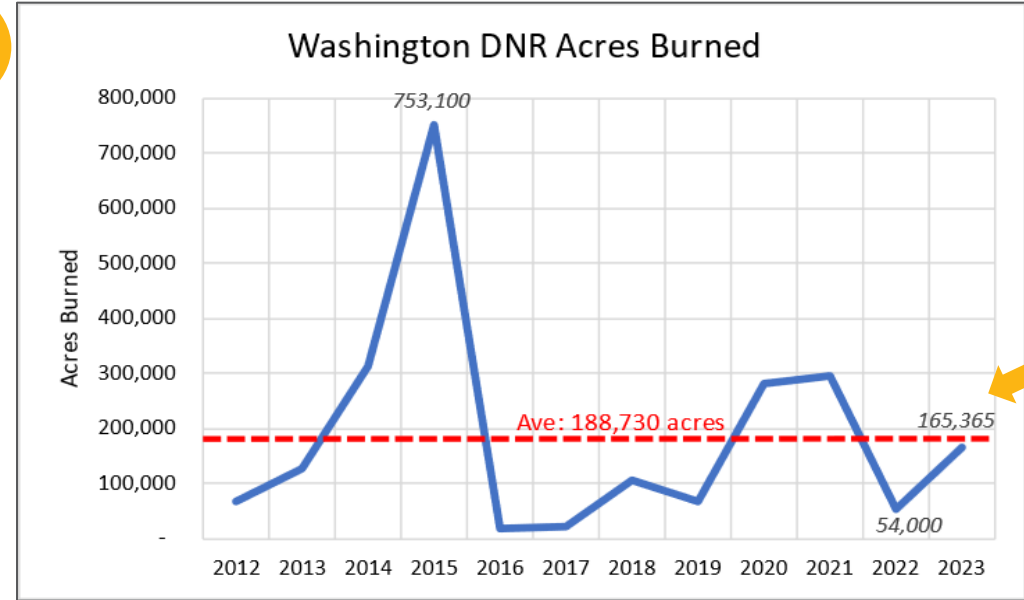
Drought & Dryness Categories

	% of WA
 D0 - Abnormally Dry	19.2%
 D1 - Moderate Drought	36.5%
 D2 - Severe Drought	26.2%
 D3 - Extreme Drought	9.8%
 D4 - Exceptional Drought	0.0%
 Total Area in Drought (D1-D	72.6%

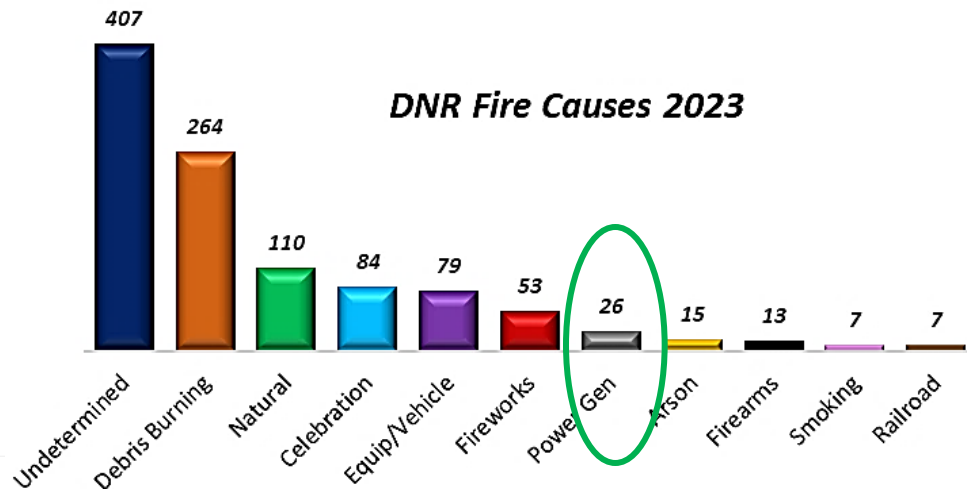
2023 Washington Wildfires



199% of Normal



88% of Normal



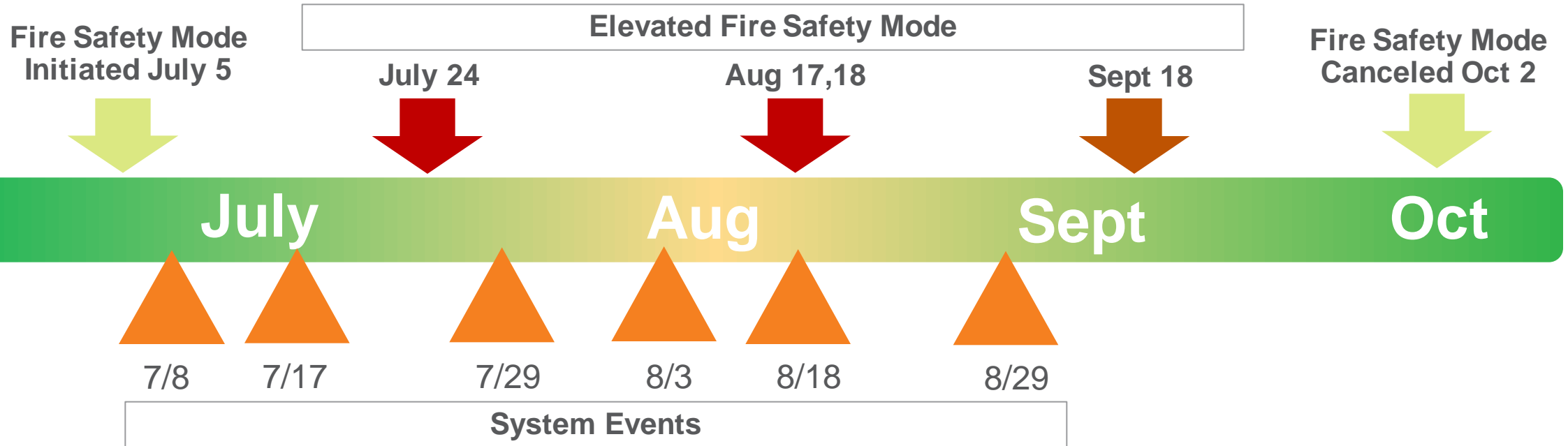
"40 air resources pre-positioned in every corner of the state has helped us leverage getting on initial attack, containing those fires so they didn't grow past 10 acres."

- Hillary Franz, Fall 2023

2023 Avista Wildfire Events



Regional Fire and Operational Summary



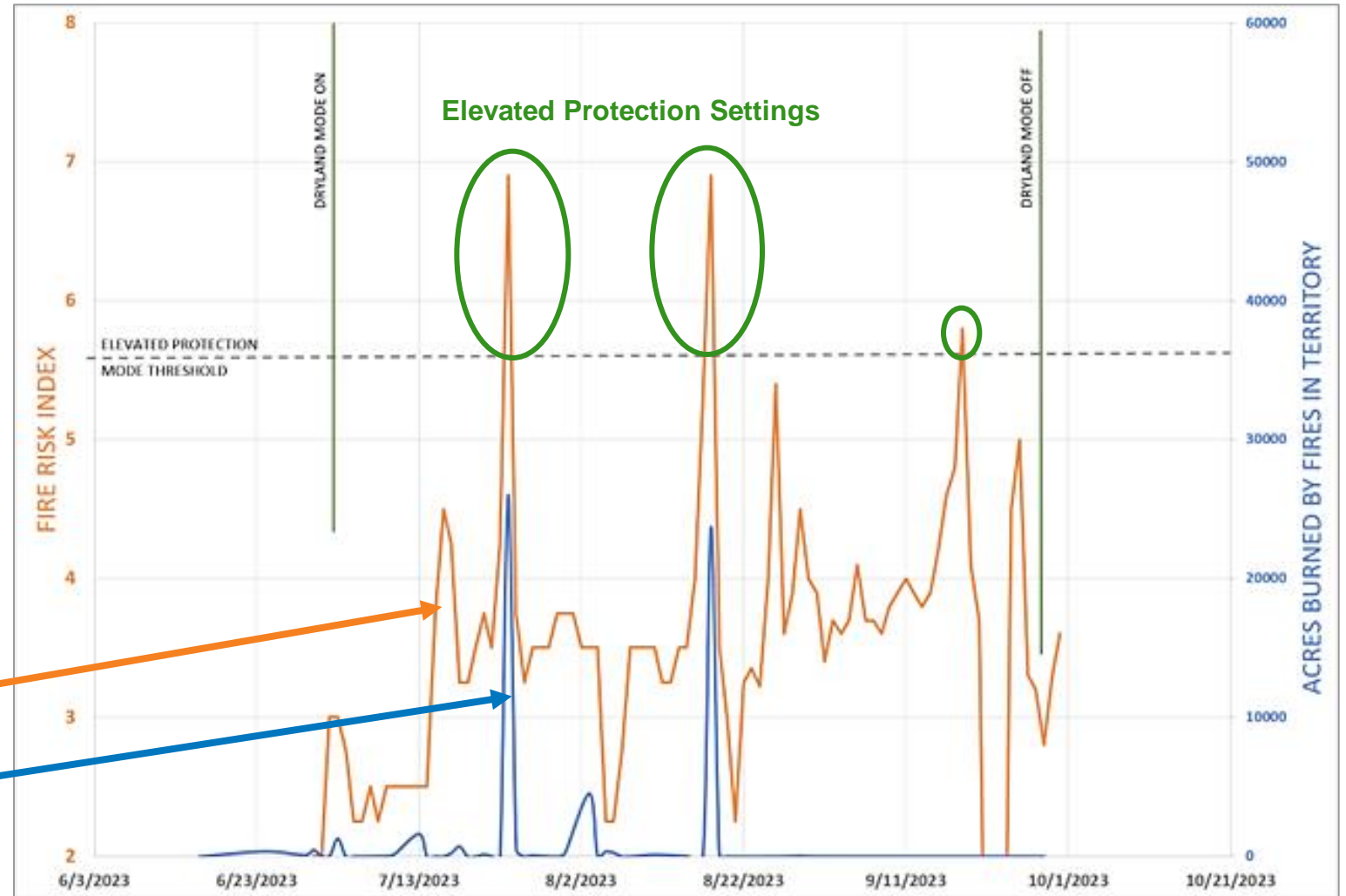
Evaluating Risk During Fire Season

Snapshot: Fire Risk Scores for Four Feeders We Moved Into Elevated Protection Modes

- ✓ Correlation between the Dashboard predictions and actual outcomes was strong
- ✓ Timing of moving to elevated protection was aligned with actual fire activity

Maximum Fire Risk Potential Identified

Number of Actual Acres Burned

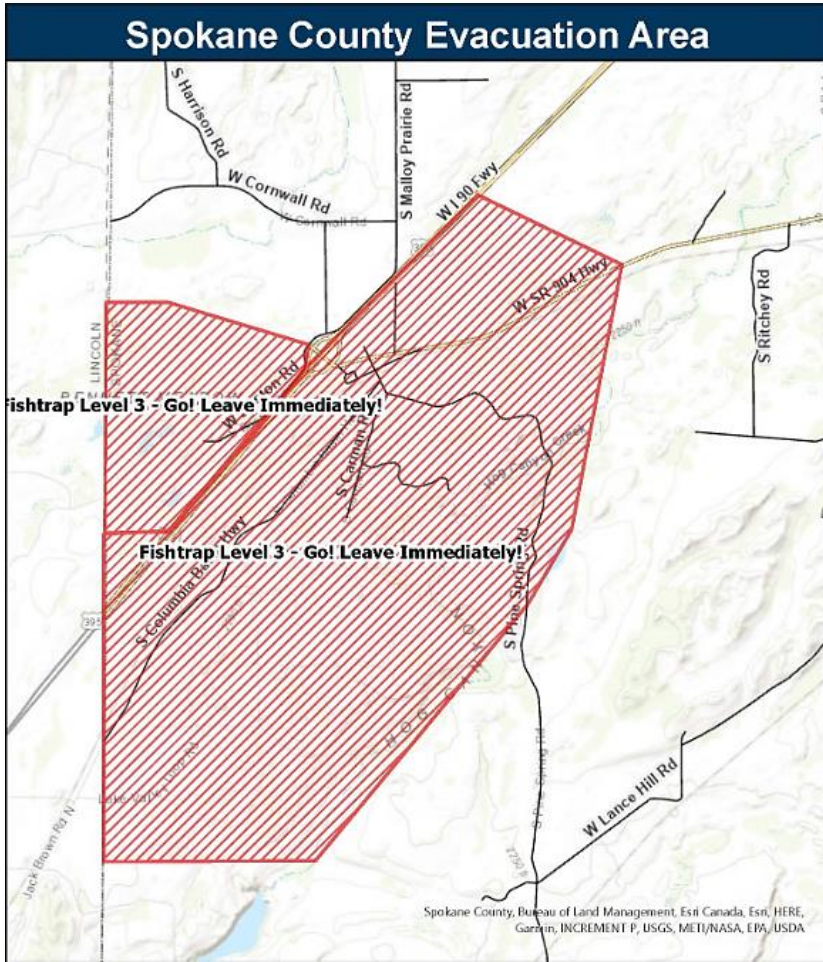


Noxon-Pine Creek 230 kV – July 8th



- About 1 acre
- Pole fire
- Burned trees and brush
- Fire resistant mesh protected pole, only repairs required

Ritzville, WA - July 17th

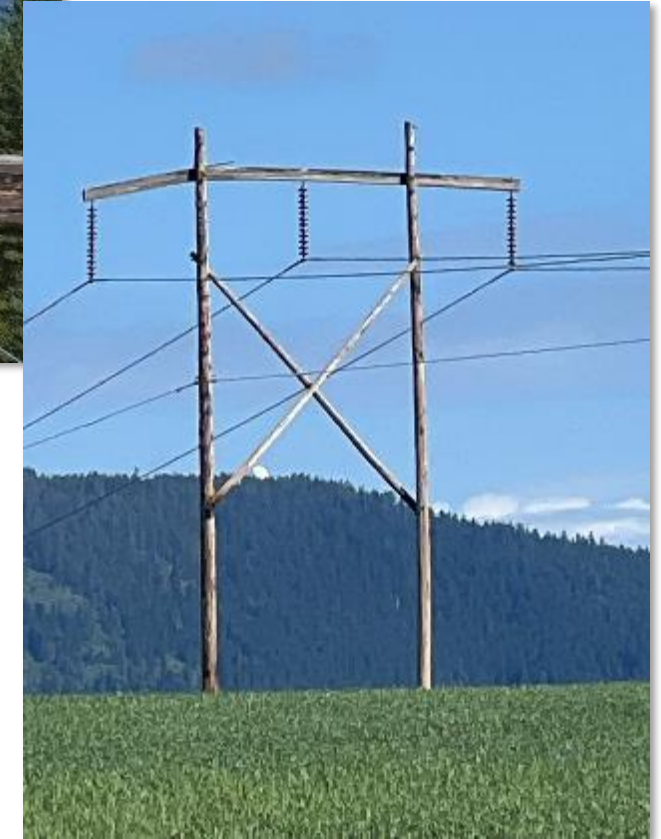


- 250 Acres
- Believed to a combine-caused fire
- 2 abandoned buildings lost
- Destroyed 9 distribution poles



Scenes from the Ritzville fire

Benewah-Pine Creek 115 kV – July 29th



Examples of damaged crossarms

- Fire about 20 feet in diameter
- Right outside Plummer Substation
- Broken transmission crossarm
- No public structures damaged
- Burned brush
- Quick response by fire department

Shawnee-Sunset 115 kV – August 3rd



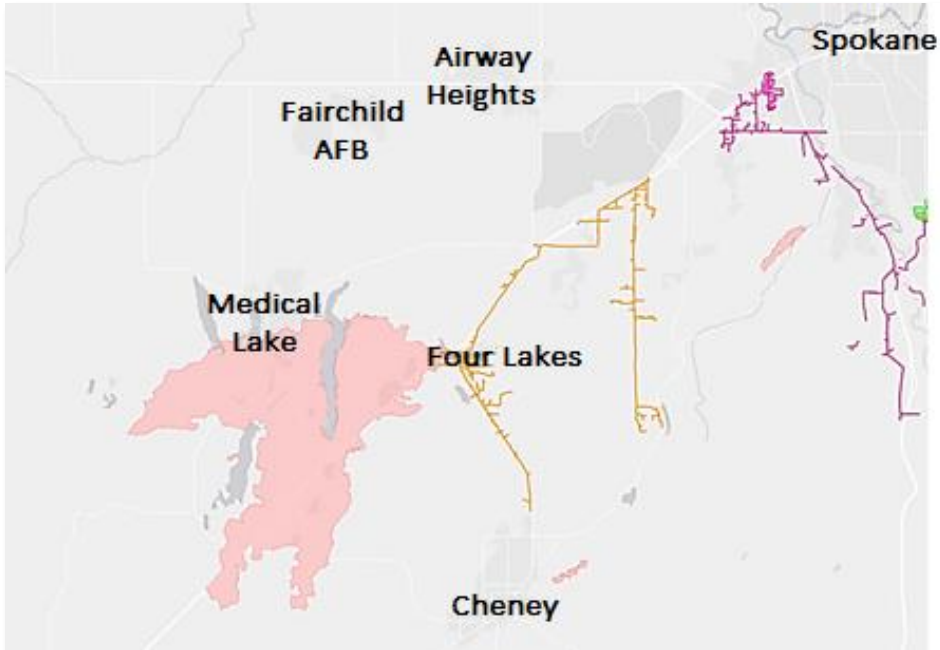
- About 1 acre in size
- Outside Spangle Substation
- Damaged 1 transmission structure
- No public structures damaged
- Burned brush



Damage on Shawnee-Sunset



Gray Fire – Medical Lake, WA - August 18th



The restoration process involved 150 Avista employees, 13 crews, 50 Veg. Management Contractors. We lost 255 poles and 1,692 customers had outages.

- 10,085 Acres
- Cause under investigation
- 250+ homes lost
- 1 fatality
- 255 distribution poles lost



Scenes from the Gray fire



Hospital Fire - Orofino, ID - August 29th



Scenes from the Hospital fire

- 53 Acres
- Unknown Cause
- Destroyed 6 homes & multiple outbuildings
- Destroyed 1 transmission H-Frame
- Damaged Avista's Orofino Substation



Communications



Community Outreach

- Washington DNR
- Nez Perce Tribe
- Spokane Tribe
- Colville Tribe
- Telephone Townhall Meetings
- Spokane County
- Stevens County
- Kootenai County
- Benewah County
- N. Idaho Fire Chiefs



- 90,422 Customers Reached
- 16 Counties in Tier 2 and 3
- 640 Public Safety Partners & Key Community Leaders
- Multi-Language Communications

2023 Telephone Town Hall Meetings

Identify and notify individual customers on impacted feeders



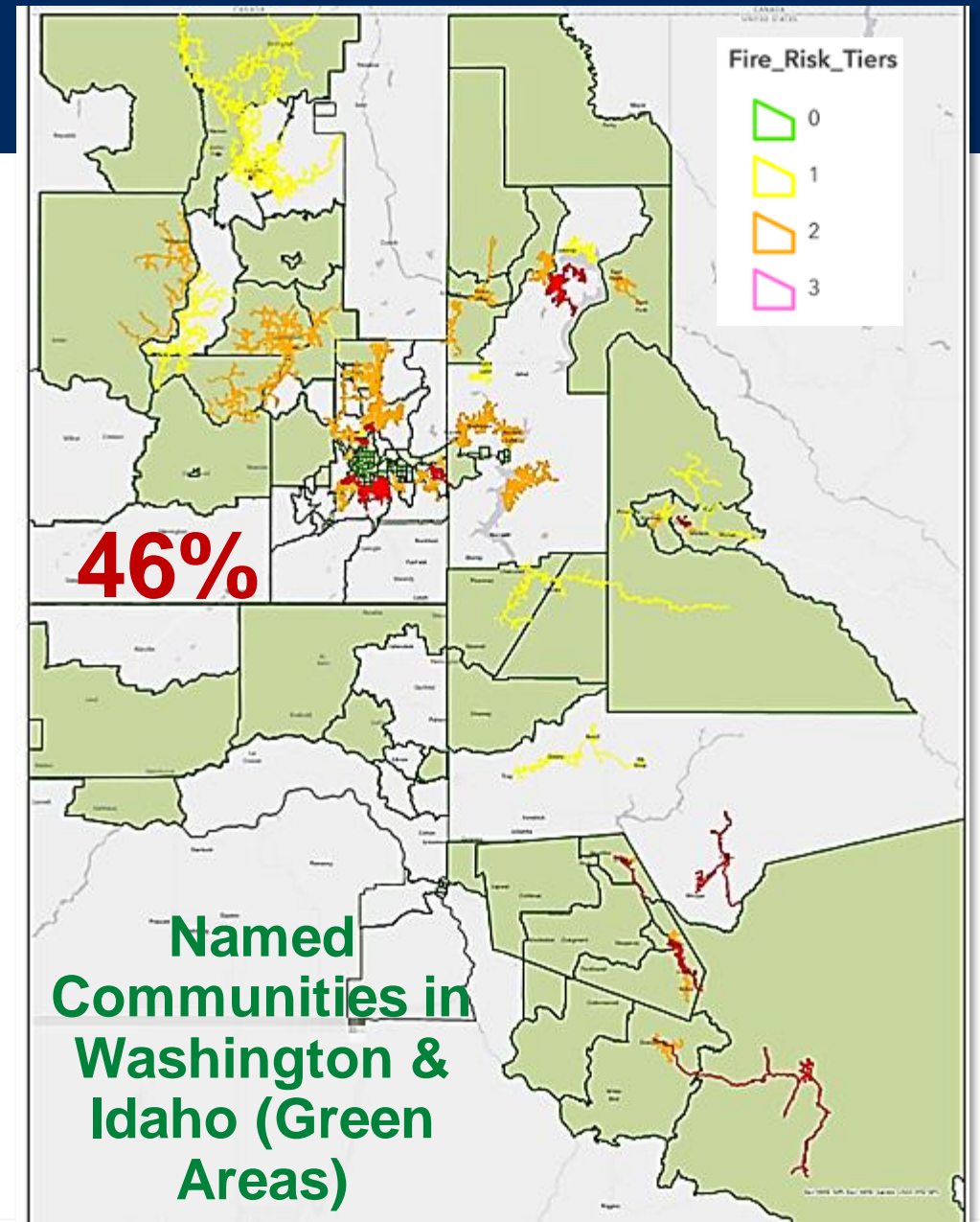
Identify critical infrastructure customers



Avista's Named Communities

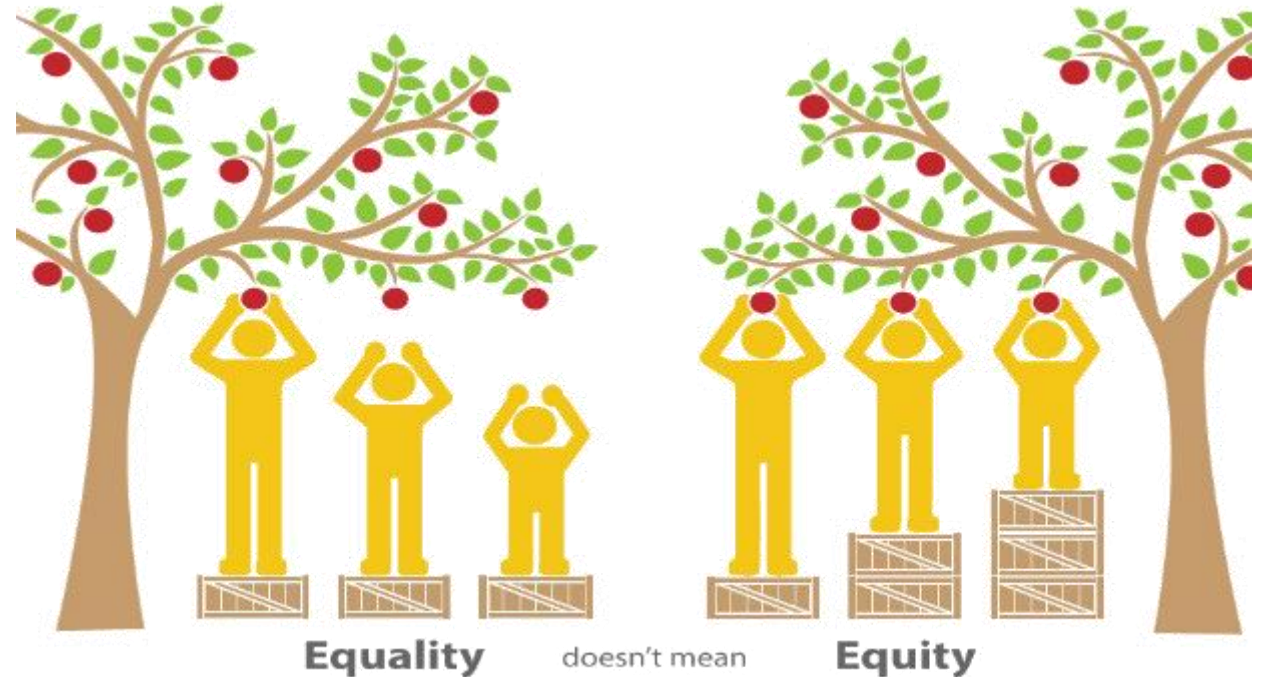
- 46% of Avista's Washington Customers:
 - *Highly Impacted Communities*
 - *Vulnerable Populations*

- **Communication**
- **Outreach**
- **Support**



Reaching Our Most Vulnerable Customers

- Identifying vulnerable customers
- Partnering with external agencies
- Special outreach to Tribes
- Pro-active outreach
- Employee Community Response Team
- Rapid-acquisition customer lists
- Non-English outreach materials
- Mapping vulnerable customer locations



External Partner Outreach

- Cross-training
- Local Emergency Management
- Partnering with first responders
 - Local
 - State
- Fire Weather Dashboard sharing
- Imbedding with fire critical incident response
- Fuel Reduction Partnerships Program
- Coordination with peer utilities



Tabletop Exercise Wildfire Scenario

- Included External Partners
- Valuable Lessons:
 - *Learned each other's "language"*
 - *Strengthened relationships*
 - *Value of embedding Avista with fire incident response*



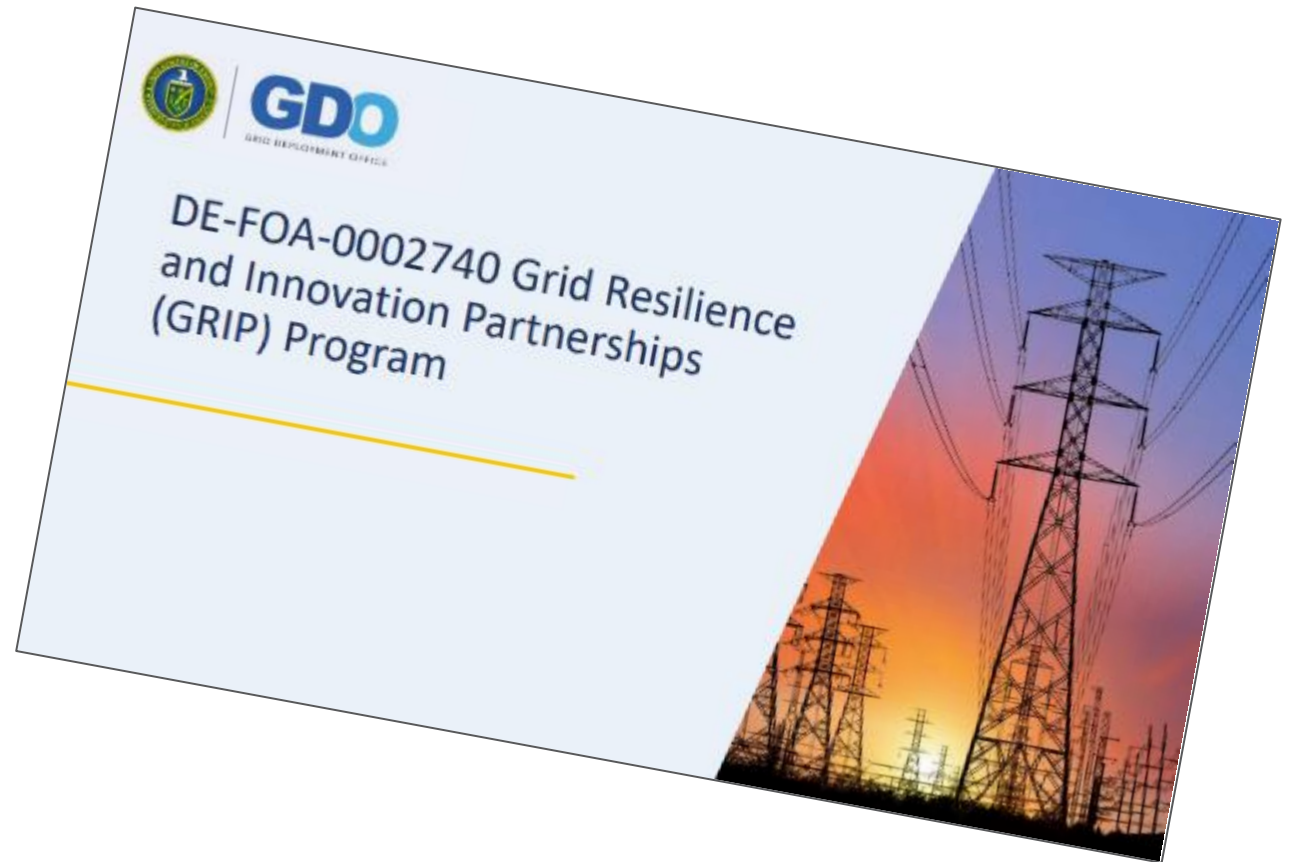
Wildfire Related Grants



Grid Hardening

Applied for two grants:

- **\$129 million: Convert 25% of planned overhead grid hardening to underground**
- **\$70 million: Reinforce existing overhead lines**



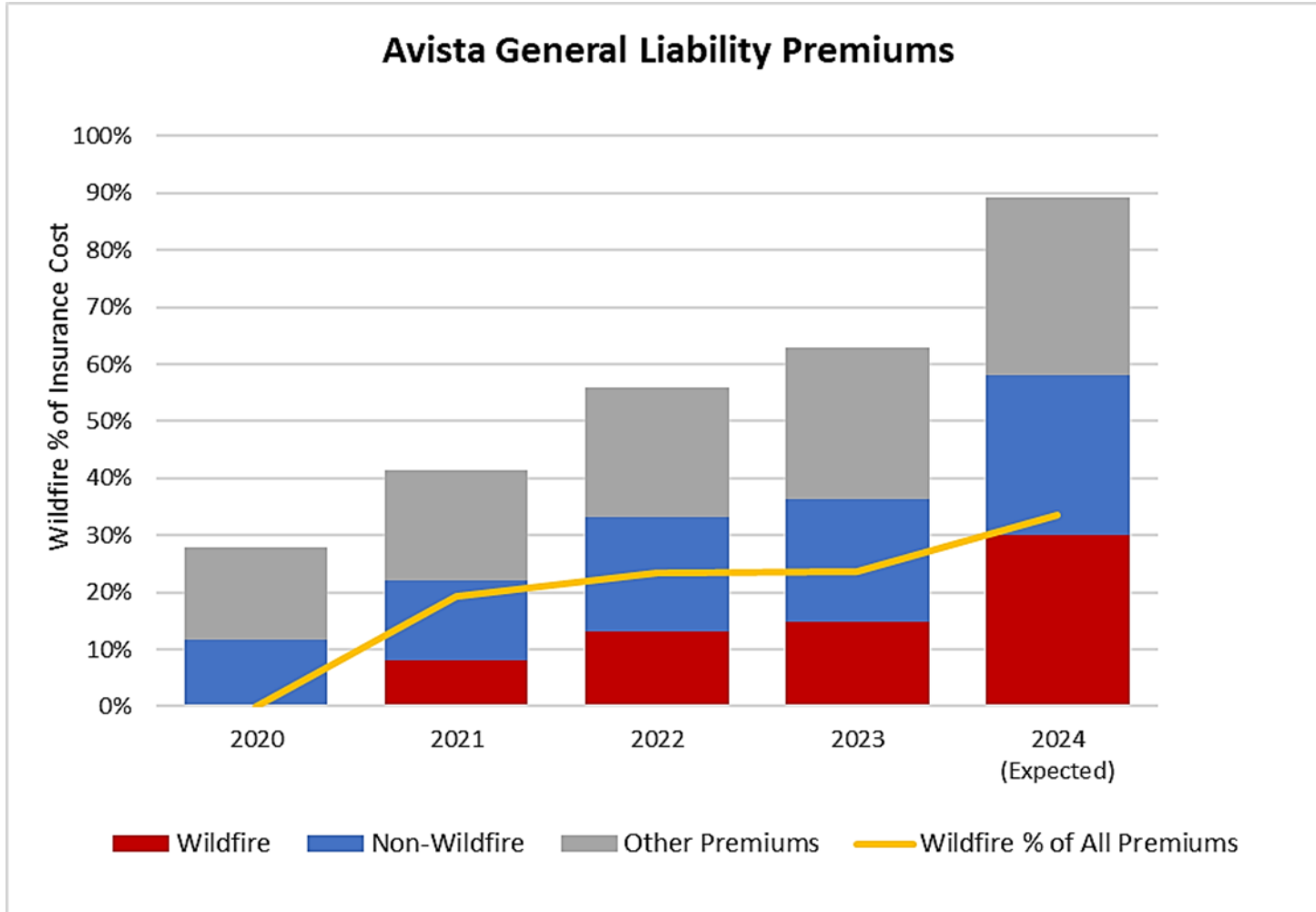
Wildfire Identification Cameras

- PanoAI Camera Installations
 - *Early Detection = Expedited Response*



Wildfire Insurance

Insurance Update



Jurisdiction	Insurance Balancing Account Mechanism
Washington	Yes
Idaho	Yes



2023 Recap

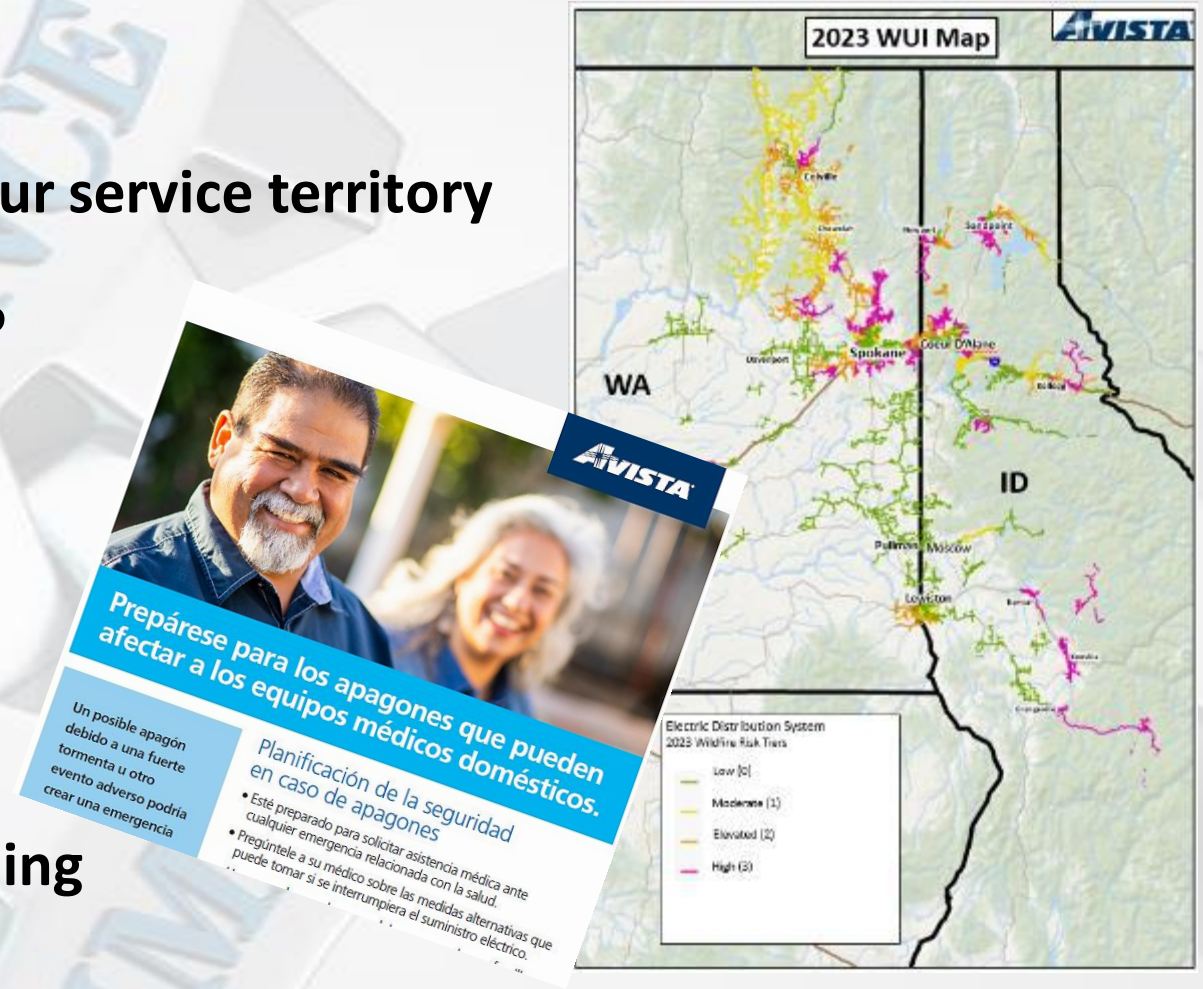


Avista's Wildfire Resiliency Plan Status



2023 Accomplishments

- Implemented Fire Safety Mode Successfully
- Expedited Response covers nearly 100% of our service territory
- Developed & Tested Formalized Wildfire EOP
- Enhanced & Improved Customer Outreach
- Updates to WUI Map
- Enhanced Fire Weather Dashboard
- Public Safety Power Shutoffs: Initiated Planning
- Safe Tree Program Expanded Systemwide



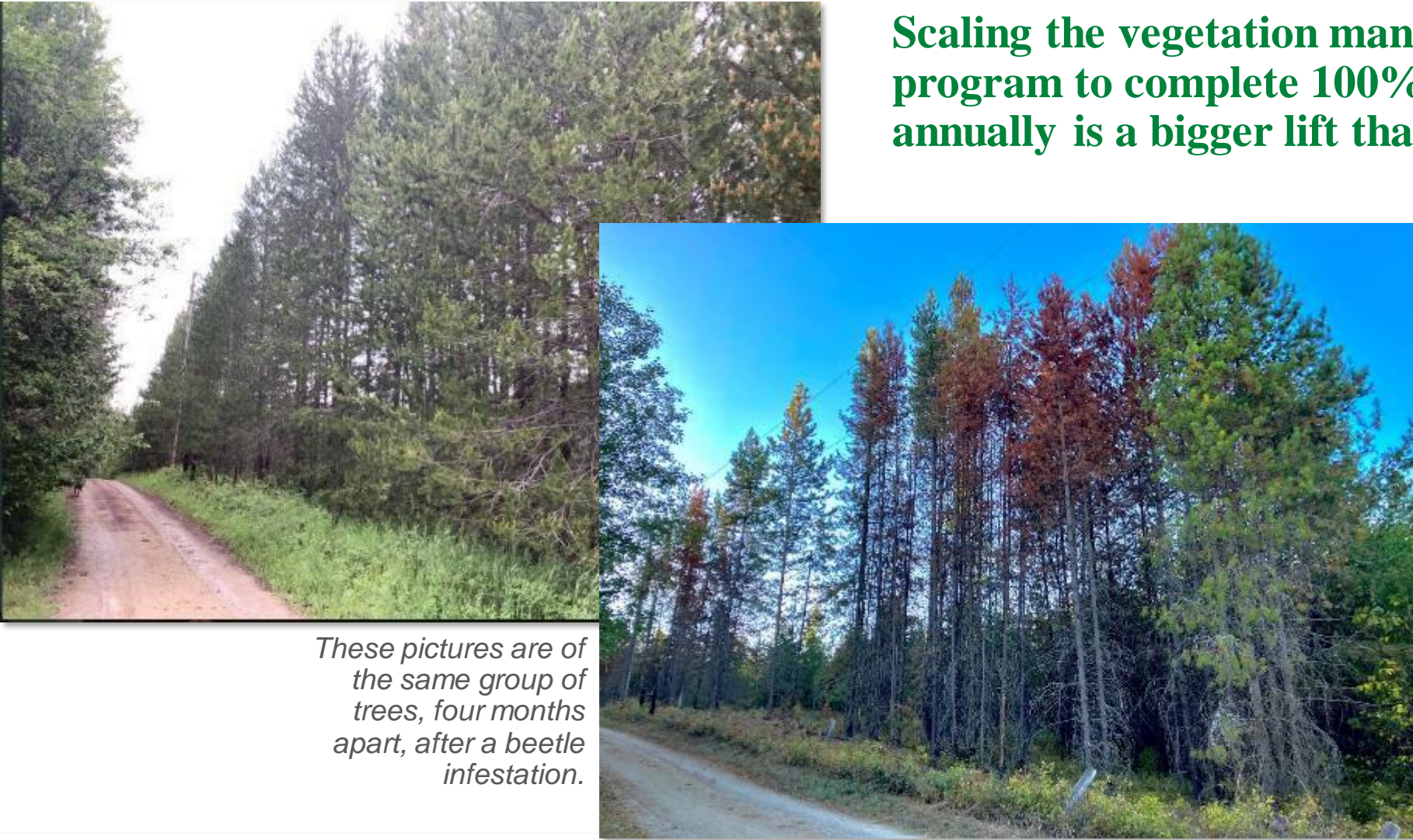
Plans for 2024



Vegetation Management Challenges

Scaling the vegetation management risk tree program to complete 100% risk inspection annually is a bigger lift than anticipated.

- Competitive Labor Markets for Contractors
- Forest Health Issues
- Incorporating New Technologies
- Customer Access for Vegetation Work



These pictures are of the same group of trees, four months apart, after a beetle infestation.

Public Safety Power Shutoffs

Utility	Enhanced Protection System?	Public Safety Power Shutoffs
Avista	Yes	Developing
APS - Arizona	Yes	Yes
Idaho Power	Yes	Yes
Northwestern	Yes	Developing
NV Energy	Yes	Yes
PG&E	Yes	Yes
PGE - Portland	Yes	Yes
PacifiCorp	Yes	Yes
Puget (PSE)	Yes	Developing



Avista Public Safety Power Shutoffs - Next Steps



Enhanced Grid Hardening

Base Grid Hardening



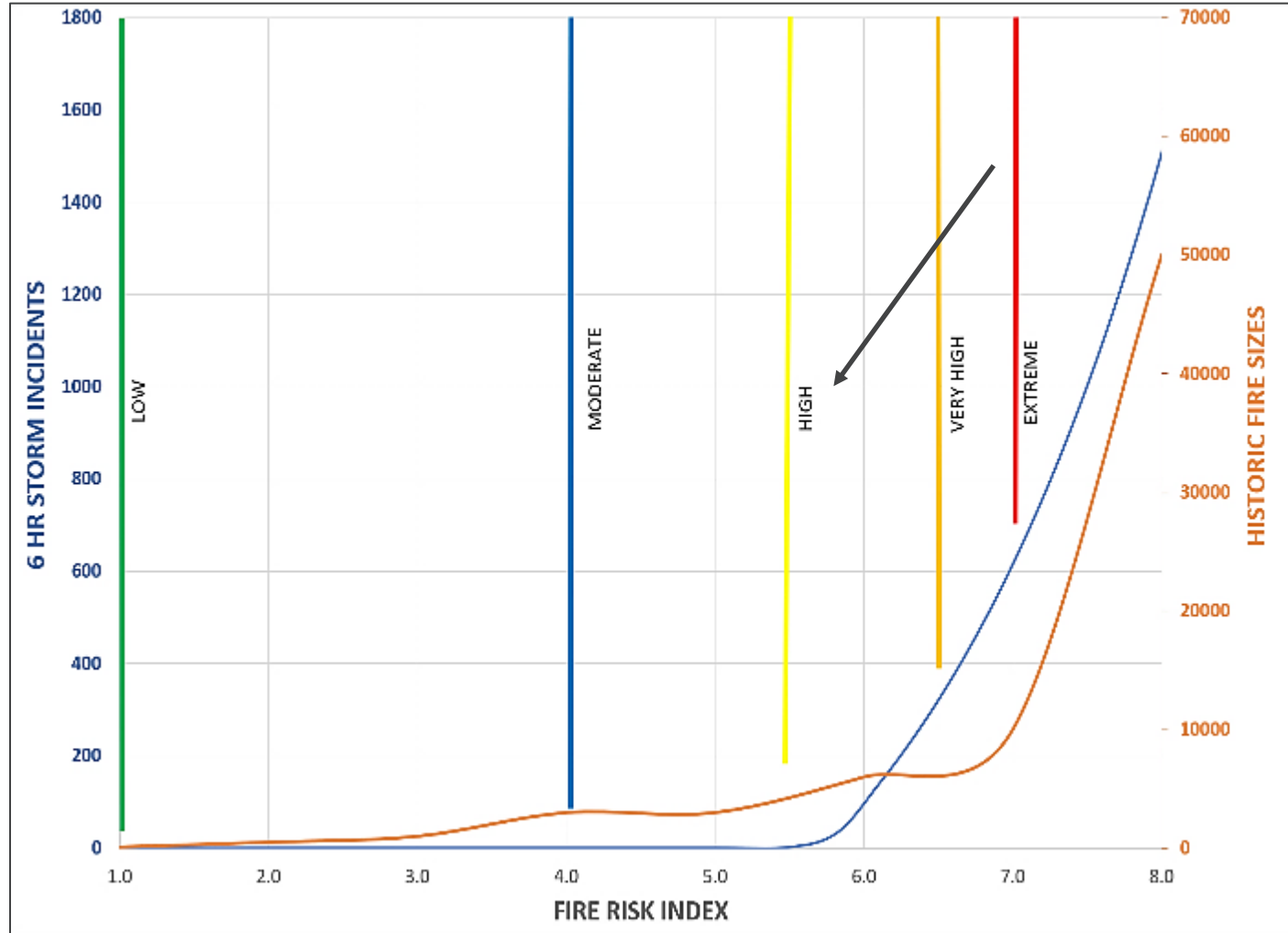
Undergrounding Covered Conductor



Plan	Feeder Miles
Current – Tier 2/3	2,747
3 Mile Radius	1,700
5 Mile Radius	3,200



Operations & Emergency Response



- All fire safety mode capable feeders “opted-in” to fire safety mode by default
- Reduce trigger point for initiating enhanced protection
- Non-fire safety mode feeders to be operated at “extreme” protection levels when wildfire conditions exist
- Public Safety Power Shutoffs as a tool

Questions