

1  
2  
3  
4  
5  
6  
7  
8  
9  
10  
11  
12  
13  
14  
15  
16  
17  
18  
19  
20  
21  
22  
23  
24  
25  
26  
27  
28

BEFORE THE WASHINGTON UTILITIES AND TRANSPORTATION COMMISSION

In the Matter of the Application of:  
  
WASTE MANAGEMENT OF WASHINGTON,  
INC. D/B/A WM HEALTHCARE SOLUTIONS  
OF WASHINGTON  
  
For an Extension of Certificate G-237 for a  
Certificate of Public Convenience and Necessity  
to Operate Motor Vehicles in Furnishing Solid  
Waste Collection Service

Docket No. TG-120033

**DECLARATION OF JESSICA L.  
GOLDMAN IN SUPPORT OF WASTE  
MANAGEMENT'S OPENING BRIEF  
ON PRELIMINARY LEGAL ISSUE**

I, Jessica L. Goldman, declare as follows:

- 1. I am counsel for Waste Management in this matter and I make this declaration based on personal knowledge. Each of the exhibits attached hereto are derived from the Washington Utilities and Transportation Commission's public record files.
- 2. Attached hereto as Exhibit 1 is a true and correct copy of the Washington State Utilities and Transportation Commission Permit Certificate No. G-237 dated January 6, 2011.
- 3. Attached hereto as Exhibit 2 is a true and correct copy of the Washington State Utilities and Transportation Commission – Washington State Solid Waste Certificate Authority Service Areas Map I dated January 2005.

1 I declare under penalty of perjury under the laws of the State of Washington and the United  
2 States that the foregoing is true and correct.

3 EXECUTED this 14th day of June, 2012 at Seattle, Washington

4   
5 Jessica L. Goldman

6  
7  
8  
9  
10  
11  
12  
13  
14  
15  
16  
17  
18  
19  
20  
21  
22  
23  
24  
25  
26  
27  
28

CERTIFICATE OF SERVICE

I hereby certify that I have this day served this document upon all parties of record in this proceeding, by the method indicated below, pursuant to WAC 480-07-150.

Table with 2 columns: Recipient Information and Service Method. Rows include Washington Utilities and Transportation Commission, Gregory J. Kopta, Fronda Woods, Stephen B. Johnson, and James K. Sells.

DATED at Seattle, Washington, this 14th day of June, 2012.

Handwritten signature of Deanna L. Schow

Deanna L. Schow

# Exhibit 1

WASHINGTON STATE UTILITIES AND TRANSPORTATION COMMISSION

1300 S EVERGREEN PARK DRIVE SW, PO BOX 47250

OLYMPIA, WA 98504-7250

(360) 664-1222

**This permit authorizes the following operations under the provisions of RCW Title 81:**

Waste Management of Washington, Inc.  
d/b/a Waste Management of Ellensburg,  
Waste Management of Greater Wenatchee,  
Waste Management of Spokane, Waste Management-Rainier,  
Waste Management-Northwest, Waste Management-Sno-King,  
Waste Management of Kennewick, North Cascade Disposal,  
Recycle America, Rural Skagit Sanitation,  
Federal Way Disposal, Nick Raffo Garbage, R.S.T. Disposal,  
Tri-Star Disposal, Western Refuse, Port-O-Let,  
Stanwood Camano Disposal, Waste Management,  
Waste Management of Seattle, Waste Management  
of Skagit County, Waste Management of Yakima,  
Washington Waste Hauling & Recycling,  
Brem-Air Disposal, Federal Way Disposal,  
Nick Raffo Garbage, North Cascades Disposal,  
Olson's Sanitation Service, R.S.T. Disposal,  
Recycle America, Rural Skagit Sanitation,  
Stanwood Camano Disposal, Tri-Star Disposal,  
Valley Garbage, Washington Waste Hauling & Recycling,  
Waste Management, Waste Management-Northwest,  
Waste Management-Rainier, Waste Management-Sno-King,  
Waste Management-South Sound, Waste Management of Addy,  
WM Healthcare Solutions of Washington  
13225 NE 126th Place  
Kirkland, WA 98034

Cert No.  
G-237

THIS CERTIFICATE DOES NOT AUTHORIZE REFUSE COLLECTION SERVICE RESTRICTED TO EXTREMELY HAZARDOUS SEMI-SOLID WASTE, INCLUDING ACIDS, CHEMICALS, AND RESIDUALS IN PIERCE, KING, SNOHOMISH AND WHATCOM COUNTIES AND INTERCOUNTY AND/OR HAZARDOUS INDUSTRIAL LIQUID, INCLUDING ACIDS, CHEMICALS AND RESIDUALS (NOT TO EXCEED 6,500 GALLONS IN BULK PER SHIPMENT)

SERVICE DATE  
JAN 07 2011

WASHINGTON UTILITIES AND TRANSPORTATION  
COMMISSION



By \_\_\_\_\_

*David W. Lane*

*NOTE: A copy of this permit MUST be carried in each vehicle being operated under this authority.*

WASHINGTON UTILITIES AND TRANSPORTATION COMMISSION

Continuation Page

IN WHATCOM, SKAGIT, SNOHOMISH, KING, KITSAP AND PIERCE COUNTIES AND INTERCOUNTY.

(PID277) SOLID WASTE COLLECTION SERVICE in Sections 6, 7, 18, the north ½ of 19 and those portions of Section 4 and 5 situated in King County, all in T. 22 N., R. 11 E.; and Sections 28, 29, 30, 31, 32 and the West ½ of Sec. 33, all in T. 23 N., R. 11 E., in King County.

(PID295) ALSO In that portion of King County, described as follows:

Commencing at the northeast City Limits of Auburn, and the Green River Banks within Section 8, T. 21 N., R. 5 E.; thence easterly along the Green River Banks to the northwest corner of Section 20, T. 21 N., R. 7 E., W.M.; thence north to the northwest corner of Section 20, T. 22 N., R. 7 E., W.M.; thence due east to the northeast corner of Section 24, T. 22 N., R. 7 E.; thence south to the southerly boundary of King County; thence westerly along the southerly boundary of King County to the southwest corner of Section 32, T. 21 N., R. 5 E., W.M.; thence northerly along the west line of said Section 32, 29, 20, 17 and 8 of T. 21 N., R. 5 E. to the Green River Banks to the point of beginning.

(PID297) ALSO in that portion of King County described as follows:

Commencing at the northwest City Limits of Renton and the shore of Lake Washington; thence northerly along the shore of Lake Washington to the City Limits of Bellevue (as of September 1, 2004); thence east along the south City Limits of Bellevue (as of September 1, 2004) to their intersection with the City Limits of Issaquah (as of September 1, 2004); thence north along the east City limits of Bellevue (as of September 1, 2004) to the intersection of the most northwesterly point of the City limits of Issaquah (as of September 1, 2004); thence east along the adjoining north City limits of Issaquah (as of September 1, 2004) to its intersection with Interstate 90; thence east along Interstate 90 until the intersection with Renton Road (Renton Road-Issaquah Road) also Highway 900; thence south along said road to a line common to T. 23 N., and T. 24 N., R. 5 E., and thence westerly along said line to the easterly boundary of the City Limits of Renton, (M.V.G. No. 220, July 7, 1964); thence along said City Limits in a northwesterly direction to the shores of Lake Washington to the point of beginning. Also including Maple Valley Golf Course.

(PID320) SOLID WASTE COLLECTION SERVICE in that portion of King County described as follows:

Commencing at the intersection of the south city limits of the City of Seattle and the intersection of said city limits with Lake Washington; thence southerly along the shores of Lake Washington to the City of Renton City limits; thence along the westerly boundary of the city limits of the City of Renton to Renton Avenue; thence northwesterly along the northerly side of Renton Avenue to 76th Avenue South to South 125th Street, thence east to 77th Avenue South; thence north along the east side of 77th Avenue South to South 120th Street; thence along the north side of South 120th Street to 76th Avenue South; thence north on 76th Avenue South (east side only) to 116th Street South; thence west on 116th Street South (no service between 116th Street South and Cornell Avenue); thence north along the eastside of Cornell Avenue to Seattle City Limits; thence easterly along said city limits to the east boundary thereof, adjacent to Lake Ridge Addition; thence northerly along said city limits to South 112th Street extended; thence westerly along said city limits to 68th Avenue South extended; thence northerly along said city limits to Ryan Street extended; thence easterly along said city limits to the point of beginning, from the described territory to dumps in King County.

## WASHINGTON UTILITIES AND TRANSPORTATION COMMISSION

Continuation Page

(PID373) SOLID WASTE COLLECTION SERVICE in that portion of King County described as follows: Starting at the intersection of NE 199th Street and 84th Ave. NE; then east on NE 199th Street to its intersection with 90th Ave. NE; then north on 90th Ave. NE to its intersection with NE 200th Street; then west on NE 200th Street to its intersection with 88th Ave. NE; then north on 88th Ave. NE to its intersection with NE 202nd Street; then east on NE 202nd Street to its intersection with 90th Ave. NE; then north on 90th Ave. NE to its intersection with NE 205th Street (also the King-Snohomish County line); then west on NE 205th Street to its intersection with 84th Ave. NE (also the west range line of T26N, R5E); then south on 84th Ave. NE to its intersection with NE 199th Street, the point of beginning.

Also: Starting at the intersection of 84th Ave. NE and NE 180th Street; then east on NE 180th Street to its intersection with 88th Ave. NE; then north on 88th Ave. NE to its intersection with NE 181st Street; then east on NE 181st Street to its intersection with 90th Pl. NE; then north on 90th Pl. NE to its intersection with NE 185th Street; then west on NE 185th Street to its intersection with 88th Ave. NE; then north on 88th Ave. NE to its intersection with 192nd Pl. NE; then west on 192nd Pl. NE to its intersection with 84th Ave. NE (also the west range line of T26N, R5E); then south on 84th Ave. NE to its intersection with NE 180th Street, the point of beginning.

Also: Starting at the intersection of NE Bothell Wy. and 84th Ave. NE; then east on NE Bothell Wy. to its intersection with 91st Ave. NE; then north on 91st Ave. NE to its intersection with NE 172nd Street; then east on NE 172nd Street to its intersection with 92nd Ave. NE; then north on 92nd Ave. NE to its intersection with NE 173rd Street; then east on NE 173rd Street to its intersection with 95th Ave. NE; then north on 95th Ave. NE to 173rd Pl. NE; then west on 173rd Pl. NE to its intersection with 93rd Pl. NE; then north on 93rd Pl. NE to its intersection with NE 175th Street; then west on NE 175th Street to its intersection with 93rd Ave. NE; then north on 93rd Ave. NE to its intersection with NE 176th Street; then east on NE 176th Street to its intersection with 95th Ave. NE; then north on 95th Ave. NE to its intersection with NE 178th Street; then west on NE. 178th Street to its intersection with 88th Ave. NE; then north on 88th Ave. NE to its intersection with NE 180th Street; then west on NE 180th Street to its intersection with 84th Ave. NE (also the west range line of T26N, R5E); then south on 84th Ave. NE to its intersection with NE Bothell Wy., the point of beginning.

(PID374) REFUSE COLLECTION SERVICE from commercial accounts or establishments in that portion of King County described as follows: Starting at the intersection of 92nd Ave. NE and 186th Pl. NE; then east on 186th Pl. NE to its intersection with 93rd Pl. NE; then north on 93rd Pl. NE to its intersection with NE 187th Street; then east on NE 187th Street to its intersection with 95th Ave. NE; then south on 95th Ave. NE to its intersection with 186th Pl. NE; then east on 186th Pl. NE to its intersection with 96th Ave. NE; then north on 96th Ave. NE to its intersection with NE 188th Street; then west on NE 188th Street to its intersection with 95th Ave. NE; then north on 95th Ave. NE to its intersection with NE 189th Street; then west on NE 189th Street to its intersection with 93rd Pl. NE; then north on 93rd Pl. NE to its intersection with NE 190th Street; then west on NE 190th Street to its intersection with 92nd Ave. NE; then south on 92nd Ave. NE to its intersection with NE 189th Street; then east on NE 189th Street to its intersection with 93rd Ave. NE; then south on 93rd Ave. NE to its intersection with NE 187th Street; then west on NE 187th Street to its intersection with 92nd Ave. NE; then south on 92nd Ave. NE to its intersection with 186th Pl. NE, the place of beginning.

(PID433) SOLID WASTE COLLECTION SERVICE in that portion of King and Pierce Counties described as follows: Starting at the point where 1st Avenue South intersects with the shore line of Puget

## WASHINGTON UTILITIES AND TRANSPORTATION COMMISSION

Continuation Page

Sound; thence south on 1st Avenue South to South 292nd Street projected; thence east on South 292nd Street projected to 8th Avenue South projected; thence north on 8th Avenue South projected to South 288th Street projected; thence east on South 288th Street projected to 12th Avenue South; thence north on 12th Avenue South projected to South 282nd Street projected; thence east on South 282nd Street projected to its intersection with the east city limits of Des Moines; thence northerly, along said city limits to its intersection with S. 272nd Street; thence east along said street to the east city limits of Federal Way; thence south along said city limits to S. 304th Street; thence east on the South side of So. 304th Street extended to the centerline of Sec. 11, T. 21 N., R. 4 E.; thence south on centerline of Sections 11 and 14, T. 21 N., R. 4 E., to Peasley Canyon Road; thence easterly on Peasley Canyon Road to the intersection with W. Valley Hwy S.; thence north along said Avenue to the intersection with Main Street West; thence east along said street to "A" Street S.E. (Auburn-Sumner Highway), thence south on said highway to the King-Pierce County Line; thence west along on said county line and northerly to its intersection with the east quarter section line of Sec. 25, T. 21 N., R. 3 E.; thence south on said quarter section line to south quarter section line of Sec. 25; thence west on south quarter section line to the west quarter section line of Sec. 26, T. 21 N., R. 3 E.; thence north on said quarter section line to the ½ section line of Sec. 26, T. 21 N., R. 3 E.; thence west on said ½ section line to intersection with the west line of Sec. 26, T. 21 N., R. 3 E.; thence north along said section line to northwest corner of Sec. 23, T. 21 N., R. 3 E.; thence east along north line of Sec. 23 to intersection with King-Pierce County Line; thence northwesterly along said county line to the shoreline of Puget Sound; thence northeasterly along said shore line to intersection with 1st Avenue South, the place of beginning.

(PID435) SOLID WASTE COLLECTION SERVICE not requiring the use of a dump truck and excluding biomedical waste, in that portion of King County described as follows: Commencing at the intersection of NE 108th Street and 132nd Ave. NE; thence easterly on NE 108th Street to the Redmond City limits, thence following the Redmond city limits in a southerly, southeasterly and westerly clockwise direction to 132nd Ave. NE; thence north along 132nd Ave. NE to its intersection with NE 108th Street, the point of beginning.

Also, commencing at the intersection of NE 97th Street and 132nd Ave. NE; thence following the Redmond city limits in a southeasterly and westerly clockwise direction to 132nd Ave. NE, thence north along 132nd Ave. NE to its intersection with NE 97th Street, the point of beginning.

Also, commencing at the intersection of NE 78th Street extended east and 132nd Ave. NE; thence following the Redmond city limits in an easterly, southerly and westerly clockwise direction to 132nd Ave. NE, thence north along 132nd Ave. NE to its intersection with NE 78th Street extended east, the point of beginning.

Also, commencing at the intersection of NE 70th Street and 132nd Ave. NE; thence following the Redmond city limits in an easterly, southerly and westerly clockwise direction to 132nd Ave. NE thence north along 132nd Ave. NE to its intersection with NE 70th Street, the point of beginning.

(PID436) REFUSE COLLECTION SERVICE not requiring the use of a dump truck in that portion of King County described as follows: Starting at the intersection of S.W. 152nd Street extended and Puget Sound; thence east along S.W. 152nd Street to its intersection with Ambaum Blvd. S.W.; thence southerly along Ambaum Blvd. S.W. to its intersection with S. 156th Street; thence east to Des Moines; thence south along Des Moines Way to S.W. 160th Street; thence southwesterly along S.W. 160th Street and



## WASHINGTON UTILITIES AND TRANSPORTATION COMMISSION

Continuation Page

Sylvester Rd to its intersection with the north city limits of Normandy Park; thence westerly and northerly along said north city limits to its intersection with 1st Ave. S.; thence south along 1st Ave. S. to its intersection with S. 192nd Street; thence east along S. 192nd Street to its intersection with Pacific Highway S. (International Blvd.); thence north to S. 188th Street; thence east along S. 188th Street to its intersection with the city limits of the City of Sea-Tac and the City of Tukwila; thence southerly and easterly along the south city limits of Tukwila to its intersection with the city limits of the City of Kent as of January 1, 1987; thence southerly and easterly in a counterclockwise direction along the city limits of the City of Kent as of January 1, 1987 to its intersection with State Highway 516 and S.E. Kent Kangley Road; thence southeasterly along State Highway 516/Kent Kangley Road to 116th Ave. S.E.; thence south along 116th Ave. S.E. to its intersection with S. 277th Street extended; thence west along S. 277th Street extended to West Valley Highway; thence south along said Highway to S. Peasley Canyon Road; thence west along S. Peasley Canyon Road; to 59th Ave. S. thence north along 59th Ave. S. to the point where it intersects with 304th Street extended; thence west along 304th Street extended where it intersects with Interstate Hwy I-5; thence north along said Interstate Highway to its intersection with S. 272nd Street; thence west on S. 272nd Street to the city limits of Des Moines; thence south along said city limits to the point where it intersects with S. 282nd Street extended; thence west on S. 282nd extended to 12th Ave. S. extended; thence south on 12th Ave. S. to the point where it intersects with S. 288th Street; thence west on S. 288th Street to its intersection with 8th Ave. S.; thence south on 8th Ave. S. to SW. 292nd Street extended; thence west on S.W. 292nd Street extended to 1st Ave. S.; thence north on 1st Ave. S.; to the shoreline of Puget Sound; thence northerly along the shoreline of Puget Sound to its intersection with S.W. 152nd Street extended, the point of beginning.

(PID437) SOLID WASTE COLLECTION SERVICE in that portion of King County as bounded on the West by Puget Sound; on the East by Lake Washington; on the North by as follows: Commencing at the intersection of E. 145th Street and the shores of Lake Washington, thence west on the south side of E. 145th Street to 5th Ave. N. E., thence north on the west side of 5th Ave. N. E. to E. 175th Street, thence east on the north side of E. 175th Street to 8th Ave. N. E., thence north on 8th Ave. N. E. (but not including 8th Ave. N. E.) to 190th Street, thence north on both sides of 8th Ave. N. E. extended to E. 201st Street, thence east on both sides of E. 201st Street extended to the west side of 11th Ave. N. E. extended, thence north on the west side of 11th Ave. N. E. extended to King-Snohomish County line, thence west on the south side of said line to the shore of Puget Sound; and on the South, by as follows: Commencing at the intersection of the south city limits of Seattle and Lake Washington, then following the city limits of Seattle in a clockwise direction to its intersection with 116th Street South; thence east on 116th Street South to 76th Ave. South; thence south on centerline of 76th Avenue South to South 120th Street centerline; thence east on centerline of South 120th Street to 77th Avenue South centerline; thence South on centerline of 77th Avenue South to South 125th Street centerline; thence west on centerline of South 125th Street to 76th Avenue South centerline; thence south on centerline of 76th Avenue South to Renton Avenue South centerline; thence easterly on centerline of Renton Avenue South to Renton West city limits (as of June 1, 1961); thence southerly along said city limits to the centerline of Hardie Street; thence south along the centerline of said street to South 134th Street centerline; thence westerly on centerline of South 134th Street to 81st Avenue South centerline; thence south on centerline of 81st Avenue South to SW Sunset Boulevard (MLK Junior WY) centerline; thence easterly following said road to Rainier Ave. (PSH-5); thence following Rainier Ave. in a southerly direction to south line of Section 19, T. 23 N., R. 5 E. (S.E. 160th Street); thence east along south line of said Section to the Renton City Limits; thence following the City Limits of Renton in a counter-clockwise direction to the point where it intersects with Maple Valley Highway; thence southeasterly along said highway to the intersection of the

## WASHINGTON UTILITIES AND TRANSPORTATION COMMISSION

Continuation Page

east line of the west half of Section 24, T. 23 N., R. 5 E. (172nd Ave. S.E. extended north); thence south along said line extended to the south line of Section 1, T. 22 N., R. 5 E., W.M., (or Southeast 208th Street) thence west along said south line to 148th Ave. S.E.; thence north along 148th Ave S.E to S.E. 192nd Street; thence west to 140th Ave. S.E.; north to Petrovitsky Road (S.E. 176th); thence west along Petrovitsky Road to its intersection with Carr Road and 108th Ave. S.E.; thence west along Carr Road to State Hwy 167; thence south along State Hwy 167 to the south line of Section 6, T.22N., R, 5E.; W.M., (or Southeast 208th Street extended); thence following said city limits in a clockwise direction to the northwest corner of said city limits, extended to the west bank of the Duwamish River; thence northerly along the west bank of said River to the north line of the southwest  $\frac{1}{4}$  of Section 25, T. 23 N., R. 4 E. thence east on said northwest line to its intersection with West Valley Rd (State Hwy. 181); thence northerly along West Valley Rd (State Hwy. 181) to the south line of Section 24, T. 23 N., R. 4 E. (South 160th Street extended); thence west on south line of said section to the easterly bank of the Duwamish River; thence northerly along the west bank of said River to the point or intersection with the south line of the northwest (continued) quarter of Section 24, T. 23 N., R. 4 E., W.M.; thence east along the south line of said northwest quarter to the west side of that portion of the city of Renton as annexed by city ordinance No. 1764 lying westerly of the east margin of BNRN Company (N.P.RR) main track right of way all being located in the south  $\frac{1}{2}$  of the NW  $\frac{1}{4}$  of Section 24, Township 23 North, Range 4 East, thence east from the east side of said portion of City of Renton along the south line of the northwest (continued) quarter of Section 24, T. 23 N., R. 4 E., W.M. to the east side of the Charles Monster Road; thence northerly along the along the easterly side of said road to the Beacon Coal Mine road; thence northerly along the along the easterly side of said road to the South 129th Street extended; thence easterly on South 129th Street to State Highway 900 (Martin Luther King Jr. Way) centerline; thence northwesterly along said boulevard to South 120th Street; thence West along South 120th Street extended to 51st Avenue South; thence North along extension of 51st Avenue South to Empire Way South Centerline; thence northwesterly on intersection of Empire Way South to Ryan Street centerline extended thence West along Ryan Street extension to extension of 33rd Avenue South; thence North along extension of 33rd Avenue South to extension of South Trenton Street; thence West along extension of South Trenton Street to East Marginal Way; thence Northwesterly along East Marginal Way to extension of South Kenyon Street; thence West along extension of South Kenyon Street to extension of 12th Avenue South; thence South along extension of 12th Avenue South to the West bank of Duwamish Waterway thence south along the West bank of the Duwamish Waterway to a point of intersection with Pacific Highway South (International Blvd) .; thence in a southerly direction along Pacific Highway South (International Blvd) to its intersection with S. 128 Street extended; thence west of S. 128 Street extended to its intersection with Military Road also the northeast point city limits of the City of Sea-Tac; thence south along Military Road and said city limits to its intersection with Pacific Highway south (International Blvd); thence southerly along Pacific Highway S. to the intersection of Pacific Highway S. and 160th Street; thence in an easterly and southerly direction along the city limits of the City of Sea-Tac to a point where the City Limit intersects for the second time the W. R/W line of Interstate Hwy #5; thence south on said W. R/W line to S. 176th Street; thence west on S. 176th Street (north side only) to Military Road; thence south on Military Road (west side only) to S. 188th Street; thence west on S. 188th Street (north side only) to PSH-1; thence south on PSH-1 (west side only) to S. 192nd Street; thence west on S. 192nd Street (north side only) to 1st Ave. S.; thence north on 1st Ave. South to a point where it intersects with the northerly city limits of Normandy Park at a point where 1st Ave. S. intersects with S.W. 162th Street; thence in a westerly direction along the north city limit line of Normandy Park to a point where said city limit line intersects with Sylvester Rd.; thence in a northeasterly direction on Sylvester Road serving the southeasterly side thereof to S. W. 160th Street; thence east on S. W. 160th

## WASHINGTON UTILITIES AND TRANSPORTATION COMMISSION

Continuation Page

and So. 160th Streets serving the south side thereof to Des Moines Way; thence north on Des Moines Way serving the east side thereof to S. 156th Street; thence west on S. 156th and S. W. 156th Street serving the north side thereof to Ambaum Blvd.; thence north on Ambaum Blvd. serving the east side thereof to S. W. 152nd Street; thence west on S. W. 152nd Street to Puget Sound.

EXCEPTION: The following paragraph is excluded from the above SOLID WASTE COLLECTION SERVICE. In that portion of King County described as follows: Commencing at the intersection of Military Road S. and Highway 516 (Kent-Des Moines Road); thence following the city limits of Kent in a clockwise direction easterly, southerly, westerly, and northerly to its intersection with Military Road S. at S. 240th Street; thence north along Military Road S. to its intersection with Highway 516 (Kent-Des Moines Road), the point of beginning.

(PID438) SOLID WASTE COLLECTION SERVICE in that portion of King County described as follows: Starting at the intersection of the Everett-Bothell County Highway and the Snohomish-King County line; thence east on Snohomish-King County line to its intersection with east line of T. 26 N., R. 7 E.; thence south on said line to its intersection with the south line of T. 25N., R. 7 E.; thence west on said line to the east line of T. 25N., R. 6 E.; thence north on said line to the S.E. corner of the N.E. ¼ of the N.E. ¼ of Section 36, T. 25 N., R. 6 E.; thence west on a line projected from said corner to the east shore of Lake Sammamish, thence following said Lake shore generally in northwesterly and southerly (counter-clockwise) direction to the point where the southeastern city limits of Redmond intersect the western shore of Lake Sammamish; thence following the city limits of Redmond as of January 3, 1978, in a clockwise direction to the point where the Sammamish River (waterway) intersects with the north city limits of Redmond; thence following the east bank of said river in a generally northerly direction to its intersection with N.E. 145th Street extended (at this point a short section of PSH-2 is one and the same as N.E. 145th Street); thence west on N.E. 145th Street extended (no service to be rendered on either side of N.E. 145th Street) to its intersection with 104th Avenue N.E.; thence northerly on 104th N.E. (rendering service on both sides of 104th Avenue N.E.) to its intersection with 105th Ave. NE; thence northerly to the north line of the south west quarter of Section 8, T26N, R5E; thence west along said north line to the west line of said section; thence south along the west line of said section to the south city limits of Bothell; thence following the city limits of Bothell, clockwise, to its intersection with the Everett-Bothell County Highway; thence north to place of beginning.

(PID439) REFUSE COLLECTION SERVICE, not requiring the use of a dump truck, in that portion of King County described as follows: Starting at the northeast corner of T26N, R8E; thence south along the east line of R8E to the south line of T22 N; thence west along said south line to the west line of R. 8 E.; thence north along said west line to the southeast corner of Section 12 T22N, R7E.; thence west along the south line of said section extended to the northeast corner of Section 19, T22N, R7.E; thence south along the east line of said section to its intersection with the Green River; thence westerly along the banks of said river to the northeast City limits of Auburn within Section 8, T21N, R5E; thence south along the west line of said Section 8 extended to the southeast corner of Section 31, T21N, R5E, also the south boundary of King County; thence west along the south line of said section 31 to its intersection with A Street SE; thence north along said street to its intersection with West Main Street; thence west along said street to West Valley Highway; thence north along West Valley Highway to South 277th Street; thence east along said street extended to 116th Ave. SE; thence north along 116th Ave. SE. to SE. 258th Street extended; thence east on said street extended to 117th PL SE extended; thence north along 117th PL. SE. extended to SE 256th Street SE; thence west along said street to 116th Ave. SE; thence north along said street to SE

## WASHINGTON UTILITIES AND TRANSPORTATION COMMISSION

Continuation Page

208th Street. SE; thence east along said street to the point of its intersection with 172nd Ave. SE extended; thence north along said Avenue to Renton Maple Valley Road; thence westerly along said road to its intersection with the City limits of Renton as of September 1, 1959; thence south along said City limits to the north line of Section 20, T23N, R5E, also city limits of Renton as of February 28, 1961; thence in a clockwise direction along said city limits to the south line of Section 20, T23N, R5E; thence west along said south line to its intersection with State Highway 167; thence north along said State Highway to SW Sunset Boulevard; thence west along said boulevard to 81st (Oakdale) Ave. SW; thence north to the City limits of Renton as of August 4, 1931; thence in a counter-clockwise direction along said City limits of Renton to Renton Avenue South; thence westerly along Renton Avenue S. to 76th Ave. South; thence north to S. 125th Street extended; thence east on S. 125th Street extended to 77th Ave. S. extended thence north along 77th Ave. S. to S. 120th Street; thence west on said street to 76th Ave. South; thence north along said Avenue to S. 116th Street; thence west along S. 116th Street to its intersection with the City limits of Seattle; thence in a clockwise direction along said city limits to its intersection with the west shoreline of Lake Washington; thence in a counter-clockwise direction along the shoreline of Lake Washington to the point where it intersects with the northwest city limits of Renton; thence east and southerly along the city limits of Renton (M.V.G. No.220, 7-7-64) to a line common to T23N, and T24N. R5E; thence easterly along said line to Renton Road (Renton-Issaquah Road); thence north along said road to the north line of Section 29, T24N, R6E; thence east along said section line extended to NW Gilman Boulevard; thence easterly along NW Gilman Boulevard to 1st Ave. NW; thence north along said avenue to E. Lake Sammamish PKWY; thence northerly along said PKWY to the point where it intersects with the north line of SW ¼ of Section 16, T24N, R6E; thence west to the shoreline of Lake Sammamish; thence in a clockwise direction along the shoreline of Lake Sammamish to the point where it intersects with NW 4th Street extended; thence east along said street to the east line of Section 36, T25N, R6E; thence south along said east line to the northwest corner of Section 6 T24N, R7E; thence east along the north line of said section extended to the southwest corner of Section 31, T25N, R8E; thence north along the west line of said section 31 extended to the northwest corner of Section 6, T26N, R8E also the King and Snohomish County line; thence east along said county line to the northeast corner of T26N, R8E, the point of beginning.

(PID440) ALSO in that portion of King county described as follows: Starting at the point where East Marginal Way S. intersects with the south line of Section 28 T24N, R4E; thence southerly along East Marginal Way S. to S. Trenton Street extended, also the city limits of Tukwila); thence east and south along the city limits of Tukwila to the point where it intersects with S. Ryan Street extended; thence east on said street to Empire Way S (State Highway 900); thence southerly along said highway to South 129th Street; thence westerly along said street to the east side city limits of Tukwila; thence southerly along said city limits to the point where it connects with Beacon-Coal Mine Road; thence southerly along the east side of said road to Charles Monster Road; thence continuing southerly along Charles Monster Road projected to the south line of the northwest quarter of Section 24, T23N, R4E, W.M.; thence southerly along the easterly bank of Duwamish River to the south line of Section 24, T23N, R4E. (South 160th Street extended); thence east on south line of said section to West Valley Highway (State Highway 181); thence south along said highway to the north line of the southwest ¼ of Section 25, T23N, R4E; thence west on said north line to the west bank of the Duwamish River; thence southerly along said River to South 180th Street (SW 43rd Street); thence east along said street to the east side of current city limits of Tukwila; thence in a clockwise direction along said city limits to the point where it intersects with the Pacific Highway South (International Blvd.); thence northerly along said Highway to the point where it intersects with the Duwamish Waterway; thence northerly along the west bank of the Duwamish

## WASHINGTON UTILITIES AND TRANSPORTATION COMMISSION

Continuation Page

Waterway to the point where it intersects with 12th Avenue S. extended; thence north on extended 12th Avenue S. to the south line of Section 29 T24N, R4E; thence east along said section line extended to its intersection with East Marginal S., the place of beginning.

(PID441) ALSO in that portion of King County described as follows: Starting at the point where SE. 208th Street intersects with 116th Ave. SE.; thence south along 116th Ave. SE to its intersection with SE. 228th PL also the city limits of the City of Kent as of January 1, 1987; thence westerly, southerly and northerly (clockwise direction) to its intersection with SE. 208th Street; thence east along said street to the point where it intersects with 116th Ave. SE., the point of beginning.

(PID442) ALSO in that portion of King County described as follows: Starting at the point where 116th Street SE. intersect with SE. 240th Street, also the city limits of the City of Kent as of January 1, 1987; thence south along 116th Street SE. to its intersection with the city limits of the City of Kent as of January 1, 1987; thence westerly, southerly, northerly and easterly (clockwise) direction to its intersection with 116th Street SE, the point of beginning.

(PID443) REFUSE COLLECTION SERVICE, not requiring the use of a dump truck, (local cartage) in Vashon and Maury Islands.

(PID451) SOLID WASTE COLLECTION SERVICE consisting of reclaimed lumber, brick and other cast off materials, from premises where construction or repair job are being or have been conducted, or where structures are being razed in the following: Maury, Mercer, and Vashon Islands; and in that portion of King county described as follows: Starting at the northwest corner of T26N, R8E; thence east along the north line of said T26N, also the King and Snohomish County Line to its intersection with King and Chelan County line; thence south along said county line to its intersection with King and Kittitas County Line; thence southwest along the King and Kittitas County line to the south line of Section 33, T23N, R11E; thence west to the west line of the East ½ of Section 33, T23N, R11E; thence north along said west line to the north line of said Section 33, thence east on said north line to the southeast corner of Section 28, T23N, R11E; thence north along the east line of said section to the north east corner of said section; thence west along the north line of said section to the northwest corner of Section 30, T23N, R11E; thence south along the west line of said section extended to the southwest corner of the NW ¼ of Section 19, T22N, R11E; thence west along the south line of said NW ¼ to the southeast corner of the NE1/4 of said Section 19; thence north along the east line of said section extended to the northwest corner of Section 8, T22N, R11E; thence east along the north line of said section to its intersection with King County line; thence southerly and westerly along said county line to its intersection with the west line of T19N, R8E; thence north along said west line extended to the southeast corner of Section 13, T22N, R7E; thence west along the south line of said section to the northeast corner of Section 19, T22N, R7E; thence south along the east line of said section to its intersection with the Green River banks; thence westerly along the Green River banks to the northeast City limits of Auburn within Section 8, T21N, R5E; thence south along the west line of said Section 8, extended to the boundary line of King County; thence west along said boundary line to its intersection with the southwest corner of Section 31, T21N, R5E; thence north along the west line of said section to its intersection with Main Street West; thence west along said street to the intersection with West Valley Hwy N. ; thence South along said highway to South Peasley Canyon Road; thence west along said road to its intersection with the centerline of Section 14, T21N, R4E; thence north along said centerline of said section extended to the north line of Section 11, T21N, R4E; thence west along the north line of said section extended to the city limits of Federal Way; thence

## WASHINGTON UTILITIES AND TRANSPORTATION COMMISSION

Continuation Page

north in a counter-clockwise direction along said city limits to its intersection with South 282nd Street projected east; thence west along said street to 12th Avenue South projected north; thence south along 12th Avenue South to its intersection with South 288th Street projected; thence west along said street to 8th Avenue South projected; thence south along said 8th Avenue to South 292nd Street projected; thence west along said 292nd Street to 1st Avenue South; thence north on 1st Avenue South extended to the shoreline of Puget Sound; thence northerly along said shoreline to S.W. 152nd Street extended; thence east along said street to Ambaum Blvd. S.W. ; thence south along Ambaum Blvd. to S. 156th Street; thence east along said street to Des Moines Way; thence south along the Des Moines Way to S. 160th Street; thence west on said street to Sylvester Road S.W.; thence south along Sylvester Road to the city limits of Normandy Park ; thence east in a clockwise direction along the city limits of Normandy Park to its intersection with S. 192nd Street; thence east along S. 192nd Street to Pacific Highway S. also the International Boulevard; thence north on said boulevard to S. 188th Street; thence east along S. 188th Street to Military Road; thence from Military to the point where it intersects with the city limits of Tukwila; thence northerly along the city limits of Tukwila to the point where it intersects with S. 128th Street; thence east along said street to Pacific Highway South (International Blvd.); thence north along said highway to the banks of Duwamish Waterway; thence northerly along the banks of said waterway to 12th Avenue South extended; thence north along said 12th Ave.; to S. Kenyon Street extended; thence east on extended S. Kenyon Street to East Marginal Way; thence south along East Marginal Way to its intersection with the extension of South Trenton Street; thence east on said street to the extension of 33rd Avenue South; thence south along said avenue to the extension of Ryan Street; thence east on Ryan street to Empire Way South; thence south on Empire Way South to the extension of 51st Avenue South; thence south on said avenue to South 120th Street; thence east on said street to SW Sunset Boulevard (MLK Junior WY); thence south along said boulevard to its intersection with S. 129th Street; thence west on South 129th Street to the city limits of Tukwila; thence southerly along said city limits to the point where it intersects with Beacon-Coal Mine Road; thence southerly along said road to Charles Monster Road; thence south along Charles Monster Road to the point where it intersects with the south line of the Northwest quarter of Section 24, T23N, R4E; thence west along that portion of city limits as annexed by City of Renton, city ordinance No. 1764 to the banks of the Duwamish River; thence southerly along the banks of said river to the point where it intersects with the south line of Section 24, T23N, R4E; thence east to the State HWY 181; thence south along said highway to the north line of the Southwest ¼ of Section 25, T23N, R4E; thence west on the north line of said Section to the west bank of the Duwamish River; thence southerly along the banks of said river to S. 180th Street; thence east along said street to the city limits of Kent as of January 1, 1987; thence southerly in a counter-clockwise direction along the city limits of Kent to the north line of Section 7, T22N, R5E; thence west along the north line of said section extended to the southeast corner of the west half of Section 1, T.22N, 5E; thence north along the east line of the west half of said section to the Maple Valley Highway; thence northwesterly along the Maple Valley Highway to the city limits of Renton; thence south in a clockwise direction along said city limits to the southeast corner of Section 20, T23N, R5E. (S.E. 160th Street); thence east along the south line of said section to the State Highway 167 (Rainier Ave.); thence north along said highway to its intersection with Southwest Sunset Boulevard; thence westerly along said boulevard to 81st Avenue South; thence north to 134th Street; thence east on 134th Street to Hardie Street; thence north to the city limits of Renton (as of June 1, 1961); thence north along said city limits to Renton Avenue South; thence northwesterly along Renton Avenue South to 76th Avenue South; thence north on 76th Ave. S. to S. 125th Street; thence east to 77th Ave. S.; thence north along 77th Ave. S. to S. 120th Street; thence west on said street to 76th Ave. S.; thence north on said street to 116th Street S.; thence west on said street to its intersection with the south City limits of Seattle; thence north in a counter-clockwise direction along

## WASHINGTON UTILITIES AND TRANSPORTATION COMMISSION

Continuation Page

the city limits of Seattle to its intersection with Lake Washington; thence in a counter-clockwise direction along the shoreline of Lake Washington to the northwest city limit of Renton; thence southeasterly along the City limits of Renton to the point where the city limits of Renton intersects with the south line of Section 33, T24N, R5E; thence east along the south line of said section extended to its intersection with Renton Road (Renton Road-Issaquah Road) also Highway 900; thence north along said Road to its intersection with Interstate 90(Sunset Hwy); thence northwesterly along said Interstate to the shoreline of Lake Washington; thence northerly in a counter-clockwise direction along the shoreline of Lake Washington to its intersection with 145th Street; thence west along said street to its intersection with 5th Ave. N.E.; thence north along on 5th Ave. N.E. to N.E. 175th Street; thence east on said street to 8th Ave. N.E. thence north on said street extended to N.E. 201st Street extended; thence east on said street to 11th Ave. N.E. extended; thence north to the King-Snohomish Boundary (N.E. 205th Street); thence east along said boundary to the north east corner of Section 1, T26N, R4E; thence south along the east line of said section to NE 199th Street; thence east on said street to its intersection with 90th Ave NE; thence north on 90th Ave. NE to its intersection with NE 200th Street; thence west on NE 200th Street to its intersection 88th Ave. NE; thence north on 88th Ave. NE to its intersection with NE 202nd Street; thence east on NE 202nd Street to its intersection with 90th Ave. NE; thence north on 90th Ave. NE to its intersection with NE 205th Street (also the King-Snohomish County line); thence east on said county line to State Highway 527 (Everett-Bothell County Highway); thence southerly in a counter-clockwise direction said highway to its intersection with the city limits of Bothell as of January 3, 1978; thence following the city limits of Bothell in a counter-clockwise direction to the southwest corner of Section 17, T26N, R5E; thence north along the west line of said section to the north line of the southwest quarter of Section 8, T26N, R5E; thence east along the north line of said section to 102nd Ave. NE; thence south along 102nd Ave. NE to its intersection with 105th Ave. NE; thence south along 105th Ave. NE to its intersection with 104th Ave. NE; thence south to NE 145th Street; thence east on said street to its intersection with the east bank of Sammamish River(waterway); thence south along said River to its intersection with the city limits of Redmond; thence in a counter-clockwise direction along the city limits of Redmond as of January 3, 1978 to its intersection with the west shoreline of Lake Sammamish; thence northerly and southerly in a clockwise direction along the shore line of Lake Sammamish to the point where the east shoreline of Lake Sammamish intersects with the south line of NE ¼ of NW ¼ of Section 32, T25N, R6E; thence east along said south line extended to the east line of Section 36, T25N, R6E; thence south to the southwest corner of Section 31, T25N, R7E; thence east on along the south line of said section extended to the southeast corner of T25N, R7E; thence north along the east line of said township to the Snohomish-King County line; thence east along said county line to its intersection with King-Chelan County line the place of beginning.

**EXCEPTION: THE FOLLOWING PARAGRAPH IS EXCLUDED FROM THE ABOVE GARBAGE AND REFUSE COLLECTION SERVICE.**

Starting at the intersection of NE Bothell Way. and 84th Ave. NE; then east on NE Bothell Wy. to its intersection with 91st Ave. NE; then north on 91st Ave. NE to its intersection with NE 172nd Street; then east on NE 172nd Street to its intersection with 92nd Ave. NE; then north on 92nd Ave. NE to its intersection with NE 173rd Street; then east on NE 173rd Street to its intersection with 95th Ave. NE; then north on 95th Ave NE to 173rd Pl. NE; then west on 173rd Pl. NE to its intersection with 93rd Pl. NE; then north on 93rd Pl. NE to its intersection with NE 175th Street; then west on NE 175th Street to its intersection with 93rd Ave. NE; then north on 93rd Ave. NE to its intersection with NE 176th Street; then east on NE 176th Street to its intersection with 95th Ave. NE; then north on 95th Ave. NE to its

## WASHINGTON UTILITIES AND TRANSPORTATION COMMISSION

Continuation Page

intersection with NE 178th Street; then west on NE. 178th Street to its intersection with 88th Ave. NE; then north on 88th Ave. NE to its intersection with NE 180th Street; then west on NE 180th Street to its intersection with 84th Ave. NE (also the west range line of T26N, R5E); then south on 84th Ave. NE to its intersection with NE Bothell Wy., the point of beginning.

(PID452) REFUSE COLLECTION SERVICE, not requiring the use of a dump truck,(local cartage) in that portion of King County described as follows: Beginning at the intersection of King-Snohomish County line and 15th Ave. NE; thence south along 15th Ave. NE to its intersection with NE 175th Street; thence west along NE 175th Street to 8th Ave. N.E.; thence north along said Avenue extended to E. 201st Street; thence east on E. 201st Street extended to the West side of 11th Ave. N.E. extended; thence north on the west side of 11th Ave. N.E. extended to King-Snohomish County line; thence east on the said County line to 15th Ave. N.E. the point of beginning.

(PID453) ALSO: Beginning at the intersection of NE Bothell Wy. and 91st Ave. NE; thence north on 91st Ave. to its intersection with 172nd Street; then east on NE 172nd Street to its intersection with 92nd Ave. NE; then north on 92nd Ave. NE to its intersection with NE 173rd Street; then east on NE 173rd Street to its intersection with 95th Ave. NE; then north on 95th Ave NE to NE 175th Street; thence west on NE 175th Street to its intersection with 93rd Pl. NE (also city limits of Bothell); then north on 93rd Pl. NE to its intersection with NE 176th Street; thence east on NE 176th Street to its intersection with 95th Ave. NE; thence north on 95th Ave. NE to its intersection with NE 178th Street; then west on NE. 178th Street to its intersection with 88th Ave. NE; then north on 88th Ave. NE to its intersection with the city limits of Bothell (also Dawson Street extended); thence in a counter-clockwise direction along the city limits of Bothell to its intersection with NE 190th Ave.; thence east on NE 190th Ave. to 92nd Ave. NE; thence north along said avenue to NE 192nd PL; thence west on NE 192nd PL.; to 88th Ave. NE; thence north on 88th Ave. N.E. to its intersection with the city limits of Bothell; thence east on said city limits to 92nd Ave. NE extended; thence north on 92nd Ave. NE extended to NE 200th Street extended; thence east on said extended street to NE Bothell Wy.; thence in a clock wise direction along the NE Bothell Wy. to its intersection with 91st Ave, NE, the point of beginning.

(PID454) ALSO: In that portion of King County described as follows: Starting at the southwest corner of Section 8, T26N, R5E; thence east on the south line of said section to 104th Ave. NE; thence north along 104th Ave. NE to its intersection with 105th Ave. NE; thence northerly along 105th Ave. NE to the north line of south west quarter of Section 8, T26N, R5E; thence west along said north line to the west line of Section 8, T26N, R5E; thence south along said west line to the south west corner of said section the point of beginning

(PID456) SOLID WASTE COLLECTION SERVICE in that portion of Snohomish County described as follows: Commencing at a point where a north-south line tangent to the west shoreline of Ballinger Lake intersects with the Snohomish-King County line; thence north on said line to its intersection with (Bradley Road) 236th Street S.W. extended; thence west on (Bradley Road) 236th Street S.W. to 76th Ave. W.; thence north on 76th Ave. W. (but not including structures thereon), to U. S. Highway 99; thence north on U. S. Highway 99 (but not including structures thereon) to 200 Street S. W.; thence north on the east side of U.S. Highway 99 to a point 100 feet north of 148 Street S.W.; thence west on this line to Puget Sound; Following Puget Sound northerly to the point where the north city limits of Mukilteo meets Possession Sound; thence easterly and southerly following Mukilteo City limits as of July 1, 1961, to the south boundary of Section 3, T. 28 N., R. 4 E. W. M.; thence east to 40 Ave. W. extended; thence south to



## WASHINGTON UTILITIES AND TRANSPORTATION COMMISSION

Continuation Page

boundary of Paine Field; following the north boundary of Paine Field to the east boundary of Paine Field; thence south to a point 100 feet north of 90 Street S. W.; thence east on this line to 12 Ave. W. extended (west boundary of Section 13, T. 28 N., R. 4 E.); thence south on 12 Ave. W. extended to 100 Street S. W.; thence east on 100 Street S. W. (both sides) to Holly Drive; thence south on 9 Ave. W. (but not including 9 Ave. W.) to intersection of U.S. Highway 99 and Broadway Cutoff; thence east on Broadway Cutoff to 8 Ave. W. (north-south line bisecting the western  $\frac{1}{2}$  of Section 24, T. 28 N., R. 4 E.); thence south on said line to Stockshow Road (112 Street S. W.); thence east on the south side of Stockshow Road to Pacific Northwest Traction right-of-way; thence north on the east side of the right-of-way to Broadway Cutoff; thence north on the Broadway Cutoff and Broadway to the south Everett City limits (as of July 1, 1961); thence following the east and north city limits of Everett (as of July 1, 1961) to Puget Sound; thence northerly along Puget Sound to the point where it intersects with the Snohomish - Island County line; thence northerly along said county line to the shoreline of Skagit Bay; thence north along said shoreline to the Snohomish-Skagit County line; thence east along said county line to the east line boundary of Snohomish County; thence south along the east boundary of Snohomish County to the King-Snohomish County line; thence west on said county line to the point of beginning.

(PID457) GARBAGE COLLECTION SERVICE on Camano Island, Island County.

(PID458) REFUSE COLLECTION SERVICE, not requiring the use of a dump truck, (local cartage) in that portion of Snohomish County described as follows: Starting at the northeast corner of Section 28, T28N, R8E; thence west along the north line of said section extended to a point 500 feet west of the N. E. corner of Sec. 25, T28 N., R. 6 E.; thence south to the south line of said section; thence west to the N. W. corner of Sec. 35, T. 28 N., R. 6 E.; thence south on the west line of said section extended to 164 Street; thence east to Highway 202; thence southwesterly along said highway to the Snohomish River, thence southeasterly along said river and the Snoqualmie River extended to the point 100 feet north of 228 Street; thence east to the east line of Section 28, T27N., R8E; thence north along said west line extended to the northeast corner of Section 28, T28N, R8E, the point of beginning.

(PID459) REFUSE COLLECTION SERVICE, not requiring the use of a dump truck, (local cartage) in that portion of Snohomish County described as follows: Commencing at a point where a north-south line tangent to the west shoreline of Ballinger Lake intersects with the Snohomish-King County line; thence north on said line to its intersection with (Bradley Road) 236th Street S.W. extended; thence west on (Bradley Road) 236th Street S.W. to 76th Ave. W.; thence north on 76th Ave. W. (but not including structures thereon), to U. S. Highway 99; thence north on U. S. Highway 99 (but not including structures thereon) to 200 Street S. W.; thence north on the east side of U.S. Highway 99 to a point 100 feet north of 148 Street S.W.; thence west on this line to Puget Sound; thence southerly along the shoreline of Puget Sound to the Snohomish-King County line; thence east along said county line to the point of beginning.

(PID460) REFUSE COLLECTION SERVICE, not requiring the use of a dump truck, (local cartage) in that portion of Snohomish County described as follows: Starting at the point where the north city limits of Mukilteo meets Possession Sound; thence easterly and southerly following Mukilteo City limits as of July 1, 1961, to the south boundary of Section 3, T. 28 N., R. 4 E. W. M.; thence east to 40 Ave. W. extended; thence south to boundary of Paine Field; following the north boundary of Paine Field to the east boundary of Paine Field; thence south to a point 100 feet north of 90 Street S. W.; thence east on this line to 12 Ave. W. extended (west boundary of Section 13, T. 28 N., R. 4 E.); thence south on 12 Ave. W. extended to 100 Street S. W.; thence east on 100 Street S. W. (both sides) to Holly Drive; thence south on

## WASHINGTON UTILITIES AND TRANSPORTATION COMMISSION

Continuation Page

9 Ave. W. (but not including 9 Ave. W.) to intersection of U.S. Highway 99 and Broadway Cutoff; thence east on Broadway Cutoff to 8 Ave. W. (north-south line bisecting the western ½ of Section 24, T. 28 N., R. 4 E.); thence south on said line to Stockshow Road (112 Street S. W.); thence east on the south side of Stockshow Road to Pacific Northwest Traction right-of-way; thence north on the east side of the right-of-way to Broadway Cutoff; thence north on the Broadway Cutoff and Broadway to the south Everett City limits (as of July 1, 1961); thence following the east and north city limits of Everett (as of July 1, 1961) to Puget Sound; thence south along the shoreline of Puget Sound to the point of beginning.

(PID461) ALSO, in the Jetty Island and (PID462) ALSO, in Hat Island (Gedney Island)

(PID463) SOLID WASTE COLLECTION SERVICE consisting of reclaimed lumber, brick and other cast off materials, where construction or repair jobs are being or have been conducted, or where structures are being razed from premises in that portion of Snohomish County described as follows: Starting at the northeast corner of Section 25, T28 N, R8 E; thence west on the north line of said section extended to a point 500 feet west of the N. E. corner of Sec. 25, T28 N., R. 6 E.; thence south to the south line of said section; thence west to the N. W. corner of Sec. 35, T. 28 N., R. 6 E.; thence south on the west line of said section extended to 164 Street; thence east to Highway 202; thence southwesterly along said highway to the Snohomish River, thence southeasterly along said river and the Snoqualmie River extended to the point 100 feet north of 228 Street, thence east to the west line of T27N., R9E; thence north along said west line extended to the northeast corner of Section 25, T28N, R8E, the point of beginning.

(PID464) ALSO: In that portion of Snohomish County described as follows: Commencing at a point where a north-south line tangent to the west shoreline of Ballinger Lake intersects with the Snohomish-King County line; thence north on said line to its intersection with (Bradley Road) 236th Street S.W. extended; thence west on (Bradley Road) 236th Street S.W. to 76th Ave. W.; thence north on 76th Ave. W. to U. S. Highway 99; thence north on U. S. Highway 99 to 200 Street S. W.; thence north on the east side of U.S. Highway 99 to a point 100 feet north of 148 Street S.W.; thence west on this line to Puget Sound; thence southerly along the shoreline of Puget Sound to its intersection with the Snohomish-King County line; thence east along said county line to the point of beginning.

(PID465) ALSO: In those Islands adjacent to the shores within Snohomish County and in that portion of Snohomish County described as follows: Starting at the point where the north city limits of Mukilteo meets Possession Sound; thence easterly and southerly following Mukilteo City limits as of July 1, 1961, to the south boundary of Section 3, T. 28 N., R. 4 E. W. M.; thence east to 40 Ave. W. extended; thence south to the boundary of Paine Field; thence following the north boundary of Paine Field to the east boundary of Paine Field; thence south to a point 100 feet north of 90 Street S. W.; thence east on this line to 12 Ave. W. extended (west boundary of Section 13, T. 28 N., R. 4 E.); thence south on 12 Ave. W. extended to 100 Street S. W.; thence east on 100 Street S. W. (both sides) to Holly Drive; thence south on 9 Ave. W. (but not including 9 Ave. W.) to intersection of U.S. Highway 99 and Broadway Cutoff; thence east on Broadway Cutoff to 8 Ave. W. (north-south line bisecting the western ½ of Section 24, T. 28 N., R. 4 E.); thence south on said line to Stockshow Road (112 Street S. W.); thence east on the south side of Stockshow Road to Pacific Northwest Traction right-of-way; thence north on the east side of the right-of-way to Broadway Cutoff; thence north on the Broadway Cutoff and Broadway to the south Everett City limits (as of July 1, 1961); thence following the east and north city limits of Everett (as of July 1, 1961) to Puget Sound; thence south along the shoreline of Puget Sound to the point of beginning.

## WASHINGTON UTILITIES AND TRANSPORTATION COMMISSION

Continuation Page

(PID466) REFUSE COLLECTION SERVICE, not requiring the use of a dump truck, (local cartage) in that portion of Whidbey Island, in Island County described as follows: Starting at the northwest corner of Section 19, T. 30 N., R. 2 E.; thence east along north line of said Section 19 extended to the shoreline of Holmes Harbor; thence southerly and northerly along said shoreline to the north line of Section 23, T30N, R2E; thence east to the eastern shoreline of Whidbey Island; thence southerly, westerly and northerly along the southern shoreline of said island to its intersection with the east line of R1E; thence north on said east line to the shoreline of said island thence northerly along the shoreline to its intersection with the west line of Section 19, T30N, R2E; thence north on said west line to the northwest corner of Section 19, T30N, R2E, the point of beginning.

(PID467) REFUSE COLLECTION SERVICE, not requiring the use of a dump truck, (local cartage) on Bainbridge Island, and in those portion of Kitsap County described as follows:

(PID468) In the City of Bremerton, (PID469) In the City of Paulsbo, and (PID470) on Blake Island.

(PID471) SOLID WASTE COLLECTION SERVICE, consisting of reclaimed lumber, brick and other cast off materials, from premises on Bainbridge Island where construction or repair jobs are being or have been conducted, or where structures are being razed.

(PID472) ALSO, in the City of Bremerton, (PID473) ALSO in Paulsbo, and (PID474) ALSO on Blake Island.

(PID475) REFUSE COLLECTION SERVICE, not requiring the use of a dump truck, (local cartage) in that portion of Mason County described as follows: Beginning at the northeast corner of Section 4, T23N, R1W; thence south along the east line of said section also the Mason-Kitsap County line to the south line of T22N, R1W; thence west along said south line to the southwest corner of Section 31, T22N, R1W; thence north on the west line of T22N, R1W to the southeast corner of Section 36, T23N, R2W; thence west on the south line of said corner extended to the southwest corner of Section 34, T23N, R2W; thence north along the west line of said section extended to the Mason-Kitsap County line; thence east along said county line to the point of beginning.

(PID476) SOLID WASTE COLLECTION SERVICE In all Skagit County (Excluding: Service in the Cities of Mount Vernon, Burlington, Sedro Woolley and Anacortes is limited to "drop-off box" service only; excluding Guemes and Sinclair Island; and excluding the Town of Concrete, Skagit County, Washington, using as a boundary the corporate limits as of March 15, 1965).

(PID477) REFUSE COLLECTION SERVICE, not requiring the use of a dump truck, (local cartage) in that portion of Pierce County described as follows: Beginning at the point where the southwest corner of Section 32, T21N, R4E meets the Pierce-King County line; thence east and southerly along the Pierce-King County line to its intersection with the south line of Section 36, T20N, R6E; thence west on the south line of said section to the west line R6E; thence south along said line to the southeast corner of Section 12, T19N, R5E; thence west along south line of said Section 12 extended to the west line of R3E; thence north along said line to the north line of T19N; thence west along said line to the west line of R2E; thence north along said line to the southeast corner of Section 13, T20N, R1E; thence west along the south line of said Section 13 extended to the west line of R1E; thence north along said line to the south line of T21N; thence west along said line to the southwest corner of Section 34, T21N, R1W; thence

## WASHINGTON UTILITIES AND TRANSPORTATION COMMISSION

Continuation Page

north along the west line of said Section 34 extended to the north line of T21N; thence west on said north line to the Pierce-Mason County line; thence north along on said county line to the point where it intersects with the northwest corner of Section 15, T22N, R1W and Pierce-Kitsap County line; thence east along on said county line to Pierce-King County line; thence south and easterly along said county line to its intersection with the south line of Section 14, T21N, R3E; thence west on south line of said section to the northwest corner of Section 23, T21N, R3E; thence south on the west line of said section extended to the south line of NW ¼ of Section 26, T21N, R3E; thence east on said south line to the south east corner of SW ¼ of NW ¼ of said section; thence south along the east line of NW ¼ of SW ¼ of said section to the southeast corner of NW ¼ of SW ¼ thence east on the south line of said NW ¼ extended to the west line of E ½ of SE ¼; thence north on the west line of said E ½ to Pierce-King County line; thence southeasterly along said county line to the southwest corner of Section 32, T21N, R4E, the point of beginning

(PID478) SOLID WASTE COLLECTION SERVICE, consisting of reclaimed lumber, brick and other cast off materials, from premises in Pierce County where construction or repair jobs are being or have been conducted, or where structures are being razed.

THE FOLLOWING AUTHORITY WAS OBTAINED BY TRANSFER OF CERTIFICATE NO. G-135 FROM RICHARD D. HARRIS.

(PID324) SOLID WASTE COLLECTION SERVICE in the Town of Concrete, Skagit County, Washington, using as a boundary the corporate limits as of March 15, 1965.

THE FOLLOWING AUTHORITY WAS OBTAINED BY TRANSFER OF CERTIFICATE NO. G-91 FROM STANWOOD CAMANO DISPOSAL, INC.

(PID457) GARBAGE COLLECTION SERVICE on Camano Island, Island County;

(PID334) SOLID WASTE COLLECTION SERVICE on Guemes Island in Skagit County.

THE FOLLOWING AUTHORITY WAS TRANSFERRED TO G-41; CERTIFICATE G-237 NO LONGER AUTHORIZES ANY SOLID WASTE COLLECTION SERVICE IN THAT PORTION OF KING COUNTY DESCRIBED AS FOLLOWS:

(PID372) Starting at the intersection of East Lake Sammamish Parkway and NW Gilman Blvd.; then northwest along NW Gilman Blvd. to its intersection with NW Mall Street, extended (also the south line of Sec. 21, T24N, R6E); then west along NW Mall Street., extended, to its intersection with 17th Ave. NW (also Renton-Issaquah Rd.); then north along 17th Ave. NW to its intersection with I-90; then west along I-90 to the intersection of 188th Ave. SE, extended; then north along 188th Ave. SE extended to the shoreline of Lake Sammamish; then east along the shoreline of Lake Sammamish to its intersection with the north boundary of Lake Sammamish State Park; then east along the north boundary of Lake Sammamish State Park to its intersection with East Lake Sammamish Parkway; then southerly along the East Lake Sammamish Parkway to its intersection with NW Gilman Blvd., the point of beginning.

THE FOLLOWING AUTHORITY HAS BEEN REVISED TO REFLECT A PORTION TRANSFER TO G-14 AND TO DELETE DUPLICATION IN THE REMAINING AUTHORITY.

## WASHINGTON UTILITIES AND TRANSPORTATION COMMISSION

Continuation Page

(PID325) SOLID WASTE COLLECTION SERVICE in that portion of Whatcom County described as follows: Starting at the northwest corner of Section 4, T40N, R10EWM; thence south on the west line of said section to the northeast corner of Section 20, T39N, R10EWM; thence west on the north line of said section to the northwest corner of Section 22, T39N, R9EWM; thence south on the west line of said section to the northeast corner of Section 33, T39N, R9EWM; thence west on the north line of said section to the northwest corner of Section 36, T39N, R8EWM; thence south on the west line of said section to the southwest corner of Section 36, T37N, R8EWM (also the Whatcom-Skagit County line); thence east along the south township line of T37N (also the Whatcom-Skagit County line) to its intersection with the Whatcom-Okanogan County line (near the south line of Section 33, T37N, R17EWM); thence northerly along said county line to its intersection with the north line of Section 10 T40N, R16EWM; thence west along said township line to the northwest corner of Section 4, T40N, R10EWM, the point of beginning.

THE FOLLOWING AUTHORITY HAS BEEN REVISED TO REMOVE DUPLICATION RESULTING FROM THE TRANSFER OF AUTHORITY FROM G-38 BREM-AIR DISPOSAL, INC.

(PID376) SOLID WASTE COLLECTION SERVICE in Kitsap County EXCLUDING the following areas: Blake Island; the City of Bainbridge Island as of February 1, 2002; and the City of Poulsbo as of September 12, 1961; EXCLUDING: The City of Bremerton as the point of origin and destination for the same shipment using as a boundary the corporate limits as of September 6, 1960.

(PID429) SOLID WASTE COLLECTION SERVICE in that portion of Benton County described as follows: Beginning at the southeast corner of Section 9, T8N, R26E; thence west along the south line of said Section 9 projected to the southwest corner of Section 7, T8N, R24E; thence north along the west line of said Section 7 and the Yakima-Benton County line to the northwest corner of Section 6, T9N, R24E; thence east along the north line of said Section 6 extended to the northeast corner of Section 1, T9N, R25E; thence south along the east line of said Section 1 extended to the southeast corner of Section 24, T9N, R25E; thence east along the south line of said Section 24 projected to the northeast corner of Section 28, T9N, R26E; thence south along the east line of said Section 28 extended to the southeast corner of Section 9, T8N, R26E, the place of beginning.

(PID428) SOLID WASTE COLLECTION SERVICE in that portion of Benton County described as follows: Starting at the point where the west line of Section 2, T5N, R28E intersects with the north bank of the Columbia River (Wallula Lake); thence north on the west line of said section projected to the northwest corner of Section 26, T6N, R28E; thence west on the north line of said section projected to the southwest corner of Section 24, T6N, R27E; thence north on the west line of said section projected to the southeast corner of Section 26, T7N, R27E; thence west on the south line of said section projected to the southwest corner of Section 29, T7N, R27E; thence north on the west line of said section projected to the southern boundary of the US Department of Energy Hanford Site (within Section 8, T10N, R27E); thence west along the southern boundary of the Hanford Site boundary to its intersection with the east line of Section 23, T11N, R24E, thence south along the east line of said section to its southeast corner; thence west along the south line of said section extended to the southwest corner of Section 19, T11N, R24E; thence north along the west line of said section (also the Benton-Yakima County Line) to its intersection with the northwest corner of Section 18, T13N, R24E; thence east along the north line of said section extended to its intersection with the Hanford Site boundary (also the east line of Section 17, T13N,

## WASHINGTON UTILITIES AND TRANSPORTATION COMMISSION

Continuation Page

R24E); thence north along said boundary to its intersection with the centerline of the Columbia River (also the Benton-Grant County Line); thence easterly and southerly along said centerline to its intersection with the Hanford Site boundary (in Section 23, T12N, R28E); thence west along said boundary to its intersection with the westerly shoreline of the Columbia River (also in Section 23, T12N, R28E); thence southerly, easterly, and westerly along the shoreline of the Columbia River to the west line of Section 2, T5N, R28E, the point of beginning.

(PID420) SOLID WASTE COLLECTION SERVICE In that portion of Chelan County described as follows: Beginning at the intersection of the centerline of the Columbia River (The Chelan-Douglas County line) and the south line of Section 21, T21N, R22E; thence west on the south line of said section extended to the point where it intersects with the Chelan-Kittitas County Line; (south line of Section 22, T21N, R19E); thence following said county line in northwesterly direction to its intersection with the west line of Section 18, T22N, R17E; thence north on the west line of said section extended to the north line of Section 6, T25N, R17E; thence west on the north line of said section extended to the southwest corner of Section 31, T26N, R15E; thence north on the west line of said section (including service along State Highway 2 to its intersection with the King-Chelan County Line) to the northwest corner of Section 6, T26N, R15E; thence east on the north line of said section extended to the southwest corner of Section 31, T27N, R16E; thence north on the west line of said section extended to its intersection with the northwest corner of Section 6, T27N, R16E; thence east on the north line of said section extended to the northeast corner of Section 1, T27N, R18E; thence south on the east line of said section extended to the southeast corner of Section 36, T26N, R18E; thence east on the south line of said section extended to the southwest corner of Section 36, T26N, R19E; thence north on the west line of said section extended to the northwest corner of Section 13, T26N, R19E; thence east on the north line of said section extended to its intersection with the Chelan-Douglas County Line (also the centerline of the Columbia River); thence south along the centerline of the Columbia River to its intersection with the south line of Section 21, T21N, R22E, the point of beginning.

(PID421) SOLID WASTE COLLECTION SERVICE in Douglas County EXCLUDING the following territory: Beginning at the northeast corner of Section 1, T29N, R26E; thence west along the north line of said Section 1 extended to the centerline of the Columbia River (also the Okanogan-Douglas County line); thence southerly, westerly, northerly, then southerly again along the centerline of the Columbia River to its intersection with the south line of Section 13, T28N, R23E; thence east along the south line of said Section 13 extended to the southeast corner of Section 13, T28N, R26E; thence north along the east line of said Section 13 extended to the northeast corner of Section 1, T29N, R26E, the point of beginning.

(PID422) SOLID WASTE COLLECTION SERVICE in those portions of Grant County described as follows: Beginning at the intersection of the centerline of the Columbia River and the north line of Section 6, T19N, R23E extended; thence east along said extended north line to the northeast corner of said Section 6; thence south on the east line of said section to the southeast corner of said section; thence east on the south line of said section extended to the northeast corner of Section 12, T19N, R23E; thence south on the east line of said section extended to the southeast corner of Section 24, T19N, R23E; thence west on the south line of said section extended to the northeast corner of Section 29, T19N, R23E; thence south on the east line of said section extended to the northeast corner of Section 32, T18N, R23E; thence east on the north line of said section extended to the northeast corner of Section 36, T18N, R23E; thence south along the east line of said section extended to the northwest corner of Section 18, T16N, R24E; thence east along the north line of said section extended to the northeast corner of Section 13, T16N,

## WASHINGTON UTILITIES AND TRANSPORTATION COMMISSION

Continuation Page

R25E; thence south along the east line of said section extended to the centerline of the Columbia River (also the Grant-Benton County line); thence westerly and northerly along said centerline to its intersection with the north line of Section 6, T19N., R23E extended, the point of beginning. (PID423) Also, Sections 28, 29, 32 and 33, T19N, R24E, and Sections 5 and 6, T18N, R24E. (PID424) Also that portion of Grant County known as Crescent Bar in Sections 19 and 30, T20N, R23E. (PID425) Also, that portion of Grant County within T28N and R30E.

(PID426) SOLID WASTE COLLECTION SERVICE in those portions of Okanogan and Lincoln Counties described as follows: Beginning at the southeast corner of Section 36, T28N, R31E; thence west along the south line of said section to its intersection with the southwest corner of Section 31, T28N, R31E; thence north along the west line of said section extended to its intersection with the centerline of the Columbia River; thence northerly along said centerline to its intersection with the north line of Section 2, T29N, R30E; thence east along the north line of said section extended to the northeast corner of Section 1, T29N, R31E; thence south along the east line of said section extended to the southeast corner of Section 36, T28N, R31E, the point of beginning.

(PID427) SOLID WASTE COLLECTION SERVICE in Kittitas County.

(PID410) SOLID WASTE COLLECTION SERVICE in that portion of Spokane County described as follows: Beginning at the intersection of the centerline of the Spokane River with the Spokane-Stevens County Line (within Section 32, T27N, R42E); thence north along said county line to the north line of Section 5, T28N, R42E; thence east along the north line of said section extended to the city limits of Deer Park (in Section 34, T29N, R42E); thence northerly and easterly in a clockwise direction along said city limits to its intersection with the south line of Section 32, T29N, R43E; thence east along the extended south line of said Section 32 to the southwest corner of Section 34, T29N, R43E; thence north along the west line of said Section 34 to the northwest corner of said Section 34; thence east along said Section 34 to the northeast corner of said Section 34; thence south along the east line of said Section 34 to the southwest corner of Section 35, T29N, R43E; thence east along the south line of said Section 35 extended to the northeast corner of Section 1, T28N, R44E; thence south along the east line of said section extended to the southeast corner of Section 12, T28N, R44E; thence east along the south line of said section extended to the northeast corner of Section 16, T28N, R45E; thence south along the east line of said section to the southeast corner of Section 33, T28N, R45E; thence west along the south line of said section to the southeast corner of Section 31, T28N, R45E; thence south along the east line of said section to the southeast corner of Section 7, T26N, R45E; thence east along the south line of said section extended to the northeast corner of Section 17, T26N, R45E; thence south along the east line of said section to the southeast corner of said section; thence east along the south line of said section extended to the northeast corner of Section 22, T26N, R45E; thence south along the east line of said section to the northwest corner of the southwest quarter of Section 35, T26N, R45E; thence east along the north line of said quarter section to the northeast corner of the southeast quarter of Section 36, T26N, R45E; thence south along the east line of said quarter section extended to the southeast corner of Section 25, T25N, R45E; thence west along the south line of said section extended to the northeast corner of Section 36, T25N, R44E; thence south along the east line of said section to the northwest corner of the southwest quarter of Section 31, T25N, R45E; thence east along the north line of said quarter section extended to the northeast corner of the southeast quarter of Section 31, T25N, R45E; thence south along the east line of said quarter section extended to the southeast corner of Section 7, T24N, R45E; thence west along the south line of said section extended to the southeast corner of Section 11, T24N, R44E; thence north along

## WASHINGTON UTILITIES AND TRANSPORTATION COMMISSION

Continuation Page

the east line of said section to the northeast corner of said section; thence west along the north line of said section to the northwest corner of said section; thence south along the west line of said section to the southwest corner of said section; thence west along the south line of said section extended (including service on Dishman-Mica Road to its intersection with Madison Road) to the southwest corner of Section 7, T24N, R44E; thence south on the west line of said section extended to the southeast corner of Section 13, T24N, R43E; thence west along the south line of said section to the southwest corner of said section; thence south along the west line of said section extended to the southeast corner of Section 35, T24N, R43E; thence west on the south line of said section extended to its intersection with the centerline of Highway 195; thence northerly along said centerline of Highway 195 to its intersection with the city limits of Spokane (within Section 8, T24N, R43E); thence westerly and northerly in a clockwise direction along said city limits to its intersection with the centerline of the Spokane River (within Section 10, T25N, R42E); thence northwesterly along said centerline to its intersection with the Spokane-Stevens County Line (within Section 32, T27N, R42E), the point of beginning.

(PID411) SOLID WASTE COLLECTION SERVICE excluding service in containers of twenty (20) cubic yard capacity or over in that portion of Spokane County described as follows: Beginning at the northeast corner of Section 30, T26N, R46E; thence south along the east line of said section (also the Washington-Idaho State line) to the southeast corner of Section 30, T25N, R46E; thence west along the south line of said section to the southwest corner of said section; thence north along the west line of said section to the southeast corner of the northeast quarter of Section 36, T26N, R45E; thence west along the south line of said quarter section extended to the west line of Section 35, T26N, R45E; thence north along the west line of said section to the northwest corner of Section 26, T26N, R45E; thence east along the north line of said section to the northeast corner of Section 30, T26N, R46E, the point of beginning.

(PID412) Also, the north half of Section 31, T25N, R45E.

TO THE EXTENT THAT THE AUTHORITY GRANTED IN THIS ORDER DUPLICATES ANY AUTHORITY PREVIOUSLY GRANTED OR NOW HELD SHALL NOT BE CONSTRUED AS CONFERRING MORE THAN ONE OPERATING RIGHT NOR SHALL ANY DUPLICATING RIGHTS BE AVAILABLE FOR PURPOSES OF TRANSFER.

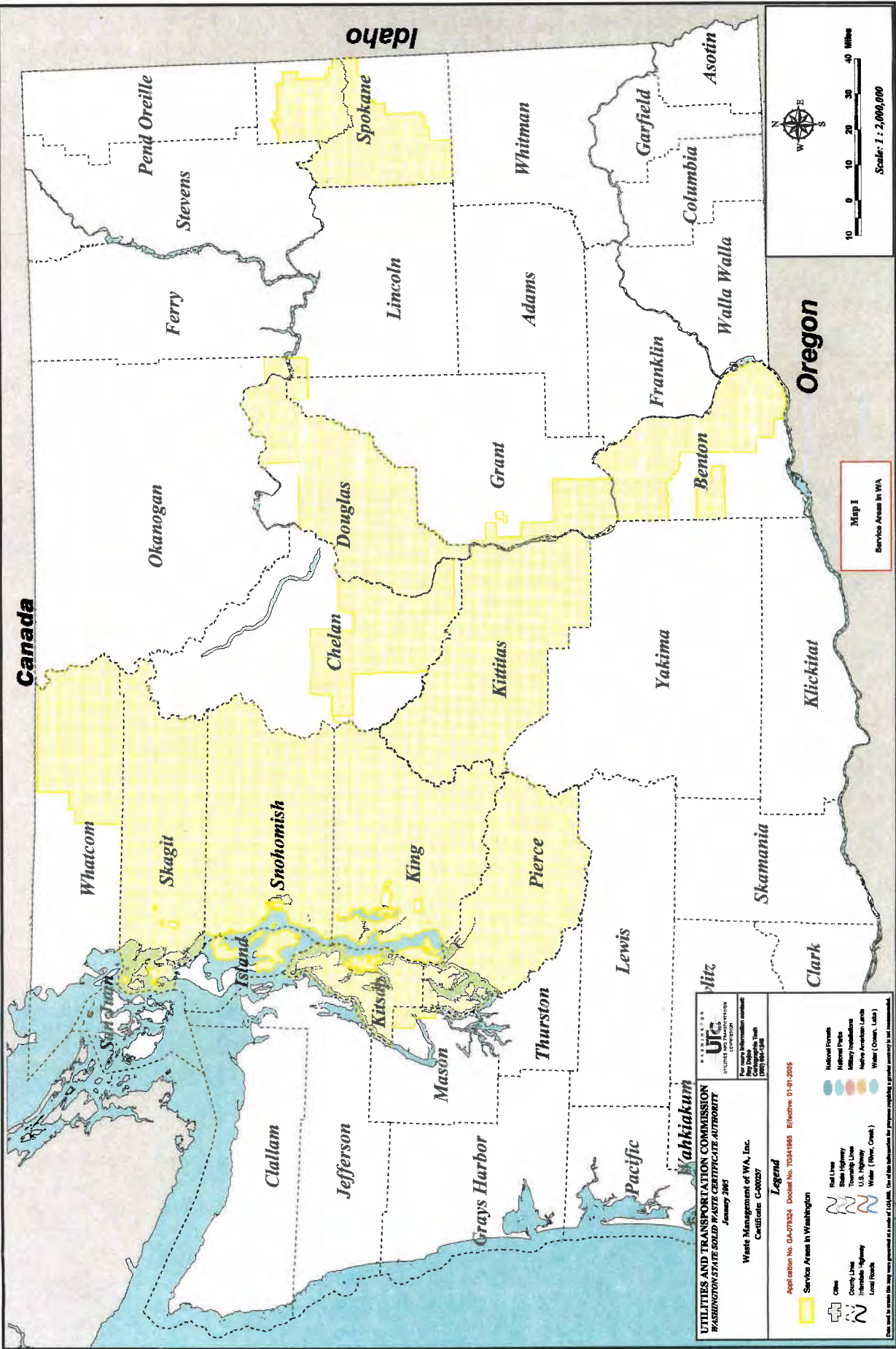
Note: PID reference numbers are used by the Commission for mapping purposes only.

TG-110023

01-06-11



# Exhibit 2



**UTILITIES AND TRANSPORTATION COMMISSION**  
 WASHINGTON STATE SOLID WASTE MANAGEMENT AUTHORITY  
 January 2005

**Waste Management of WA, Inc.**  
 Certificate: C000297

**Legend**

Service Areas in Washington Cities County Lines Interstate Highway Local Roads	National Forests National Parks Military Installations Native American Lands Water (Oceans, Lakes) Water (Rivers, Creeks)
--------------------------------------------------------------------------------------------	------------------------------------------------------------------------------------------------------------------------------------------

Application No. 03-07503 DocId: 31034195 RevDate: 01-01-2005  
 Service Areas in Washington

**UJC**  
 UTILITIES AND TRANSPORTATION COMMISSION  
 For more information contact:  
 Washington State Utilities and Transport Commission  
 325 West Washington Street  
 Olympia, WA 98501

**Map I**  
 Service Areas in WA

