

UNION PACIFIC RAILROAD COMPANY

Terrel A. Anderson
Manager of Industry and Public
Projects
taanders@up.com



9451 Atkinson Street
Roseville, CA. 95747
Fax (402) 233 3066
PH (916) 789-5134

April 28, 2010

David Pratt
Assistant Director, Transportation Safety
Washington Utilities & Transportation Commission
1300 S. Evergreen Park Dr. S.W.
P.O. Box 47250
Olympia, WA 98504-7250



Re: TR-100573, TR-100574 and TR-100575 – Petitions from Benton County to Extend Piert Road across Union Pacific Tracks at Three Locations

Dear Mr. Pratt:

Union Pacific does not have sufficient information to properly review Benton County's proposal to extend Piert Road. We request that Benton County supplement the above-referenced petitions to provide the illustrations required by Section 9. A sample of the kind of diagram we would like to see is attached.

In addition, Union Pacific requests that the County identify which roads would be removed as a result of the closure of the private crossings and the Cochran Road crossing.

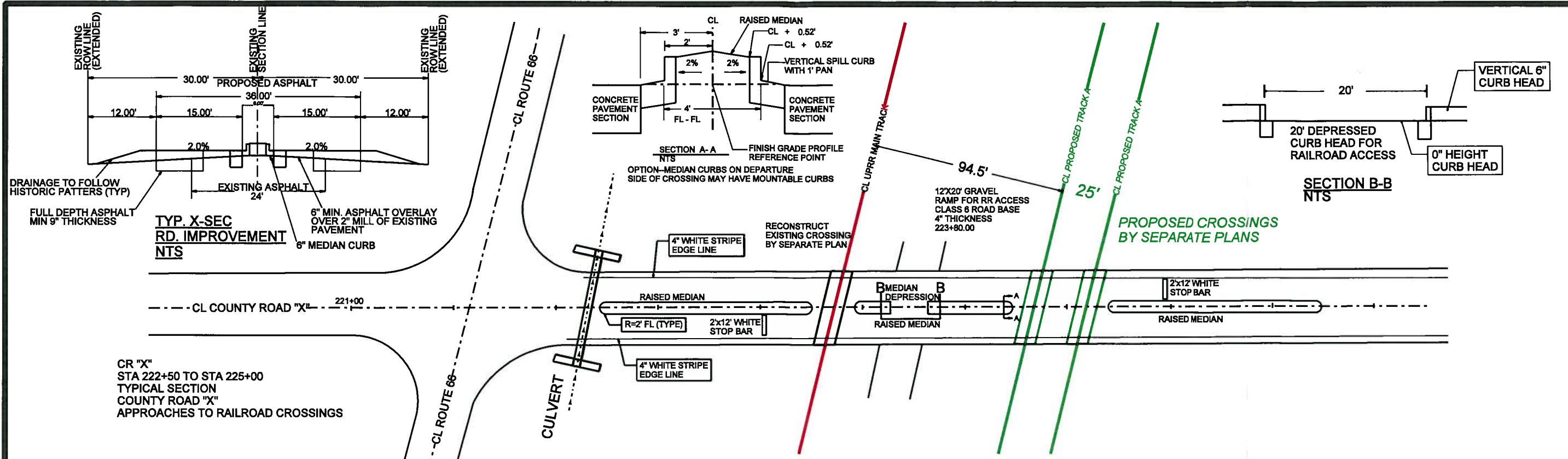
Sincerely,

A handwritten signature in blue ink, appearing to read "Terrel A. Anderson", followed by a horizontal line.

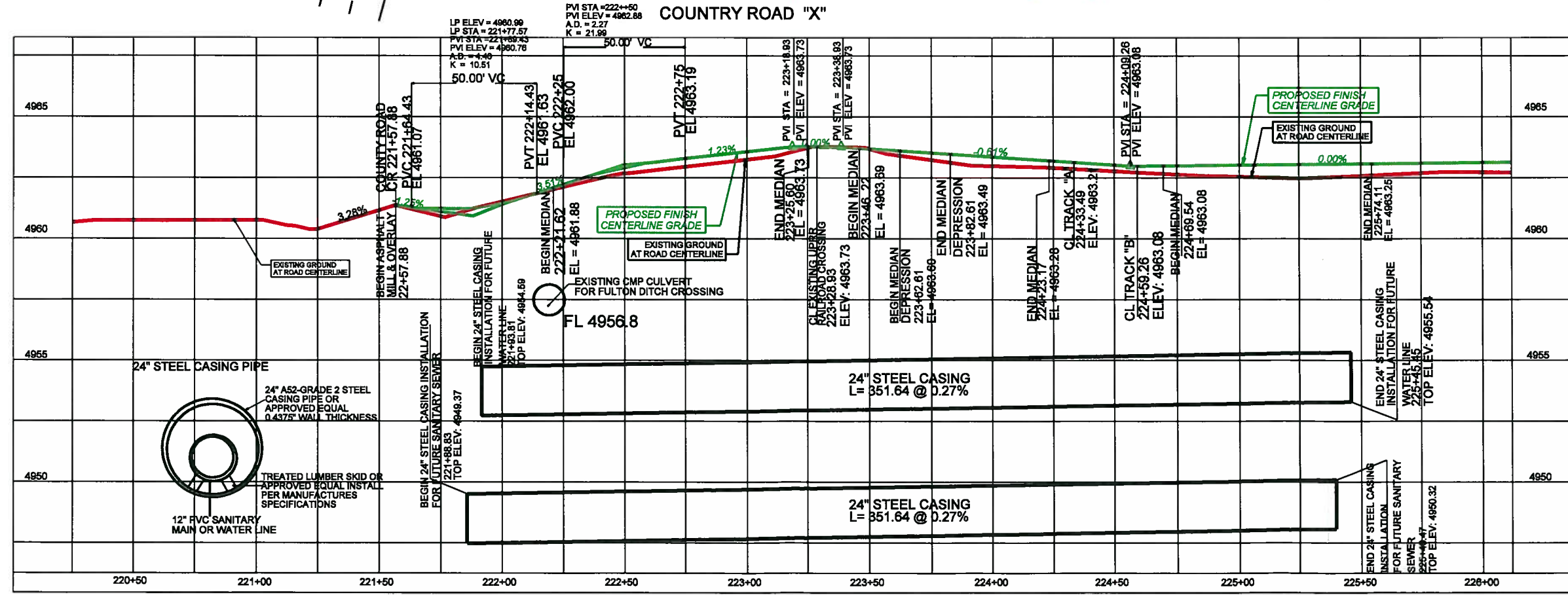
Terrel A. Anderson
Manager of Industry and Public Projects

Enclosure

cc: Malcolm Bowie, Benton County
Operating Files Omaha



CR "X"
STA 222+50 TO STA 225+00
TYPICAL SECTION
COUNTY ROAD "X"
APPROACHES TO RAILROAD CROSSINGS



NOTE :

1. ANY OVERHEAD OR UNDERGROUND UTILITIES THAT CROSS RR ROW WILL REQUIRE SEPERATE PERMITS FROM UPRR PRIOR TO INSTALLATION.
2. PROPOSED ROAD PROFILE @ XING TO CONFORM TO CURRENT AASHTO STANDARDS.
3. RAISED MEDIANS WHICH WILL HAVE A FLASHING LIGHT CROSSING SIGNALS INSTALLED MUST BE A MINIMUM OF 8'9" WIDE FROM FACE OF CURB TO FACE OF CURB. RAISED MEDIANS WHICH WILL HAVE A FLASHING LIGHT SIGNAL WITH GATES INSTALLED MUST BE A MINIMUM OF 10' WIDE FROM FACE OF CURB TO FACE OF CURB.

SCALE 1"=50' H
1"=5' V



	DRAWN BY: SNS	UNION PACIFIC RAILROAD Office of Assistant Vice President Engineering Design/Construction
	CHECKED BY: JEP	
	DATE: 10/21/2009	
	SHEET NUMBER: 001 of 001	
LOCATION & DESCRIPTION: COUNTY ROAD IMPROVEMENTS COUNTY ROAD "X" RAILROAD CROSSING		SHEET TITLE: DETAILED PLAN & PROFILE LINE