



---

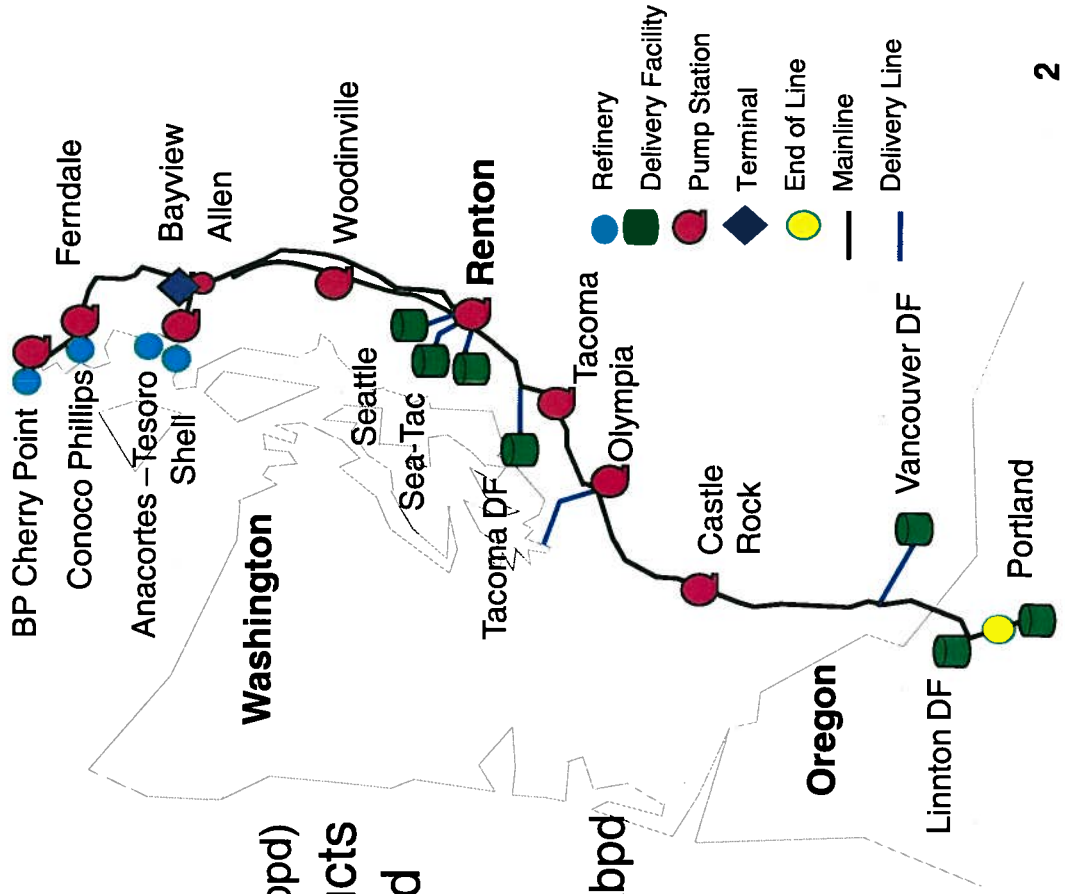
# Potential Green River Flood Damage Control Project

October 15, 2009 WUTC Update



# Olympic Pipe Line System Background

- Largest liquid petroleum products pipeline in the Pacific Northwest.
- Connects 4 refineries (capacity: ~590 kbbpd) in the Puget Sound Area to 22 products terminals in Western Washington and Northwestern Oregon.
- Total system averages ~ 280 kbbpd
- Deliveries south of Renton at ~155 kbbpd
- Sole source for SeaTac Airport





# Potential Green River Flood Background & Summary

---

- Renton Pump Station and Operations Building has the potential to see significant flooding.
- If / when flooded pipeline operations will cease for the total system until water recedes.
- Priorities – safety and the environment
- Alternate backup operational plans available
- Damage mitigation plans in play in November



# Response Plan Objectives

---

- Prepare risk ranked contingency plans for a flood event that:
  - Addresses employee and community safety
  - Minimizes environmental impacts
  - Minimizes business interruptions with emphasis on regional supply
  - Supports local Emergency response initiatives
- Be ready early November



# Major Plan Components

---

- **Damage Mitigation**
- **Business Interruption Minimization**
- **Rapid Recovery Response**
- **Liaison with local and state emergency responders**



# Damage Mitigation

---

- Removing unnecessary equipment, documents, and spare parts
- Sewer and storm drain isolation
- Pre-deploying HESCO barrier around Station building (switchgear and control center)
- Plan for minimizing environmental damage
  - Absorbent / boom pre-deployment
  - Sump and vessel preconditioning
- Coordinated evacuation plan for people and critical equipment



## Business Continuity Plan

---

- Backup Data and Control Center capabilities being expanded
- Developed and tested running in bypass mode (without Renton Station Main Line Units)
- Shipper communications for their preparation
- Operations, security, communication, and employee support plans



## Rapid Recovery Response

---

- Inventory of critical equipment and ordering of spare parts
- Prioritized work plan of equipment to be returned to service first





## Liaison with Local Responders

---

- Attend Emergency Response meetings and influence priorities
  - Participating in King County Green River Critical Infrastructure and Operations Utility Branch flood planning meetings
- Understand different evacuation/action trigger points of Cities, Counties, and power provider
- Liaison and coordinate with the Emergency Responders during an event

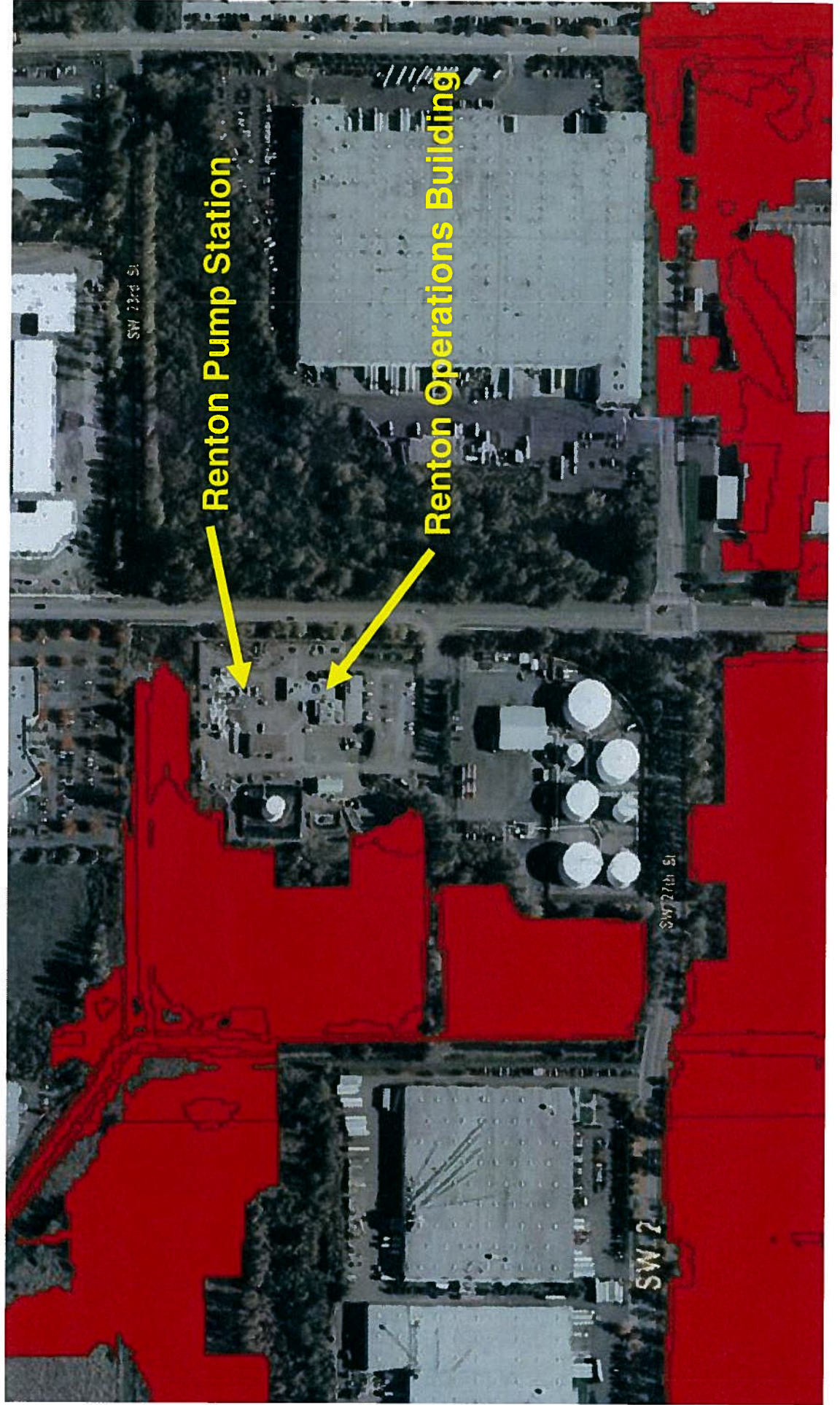


# Questions?

---



# Flooding at 17,600 cfs River Flow





# Issues

---

- Priority access to station during (if possible) and after flood
- Support to keep water outside barriers
- Power Priority
- Flexible pipeline pumping schedule deliveries to meet emergency needs