



**PUGET
SOUND
ENERGY**

PIPELINE
file

RECEIVED
RECORDS MANAGEMENT
03 JAN 16 AM 8:50
STATE OF WASH.
UTIL. AND TRANSP.
COMMISSION

January 13, 2003

Carole Washburn
Washington Utilities and Transportation Commission
PO Box 47250
Olympia, WA 98504-7250

RE: Docket PG-020978 16" Redmond Supply Main Pressure Authorization

Dear Secretary Washburn:

The construction of Puget Sound Energy's (PSE) 16" Redmond Supply Main – Phase I was completed on December 17, 2002. In accordance with commission order PG-020978, please find enclosed a map showing the pipe location and the final construction specifications for this project. The specifications are provided in a format consistent with previous requests for pipeline data on gas transmission lines and lines operating above 250 psig (ref. WUTC letter December 14, 1999).

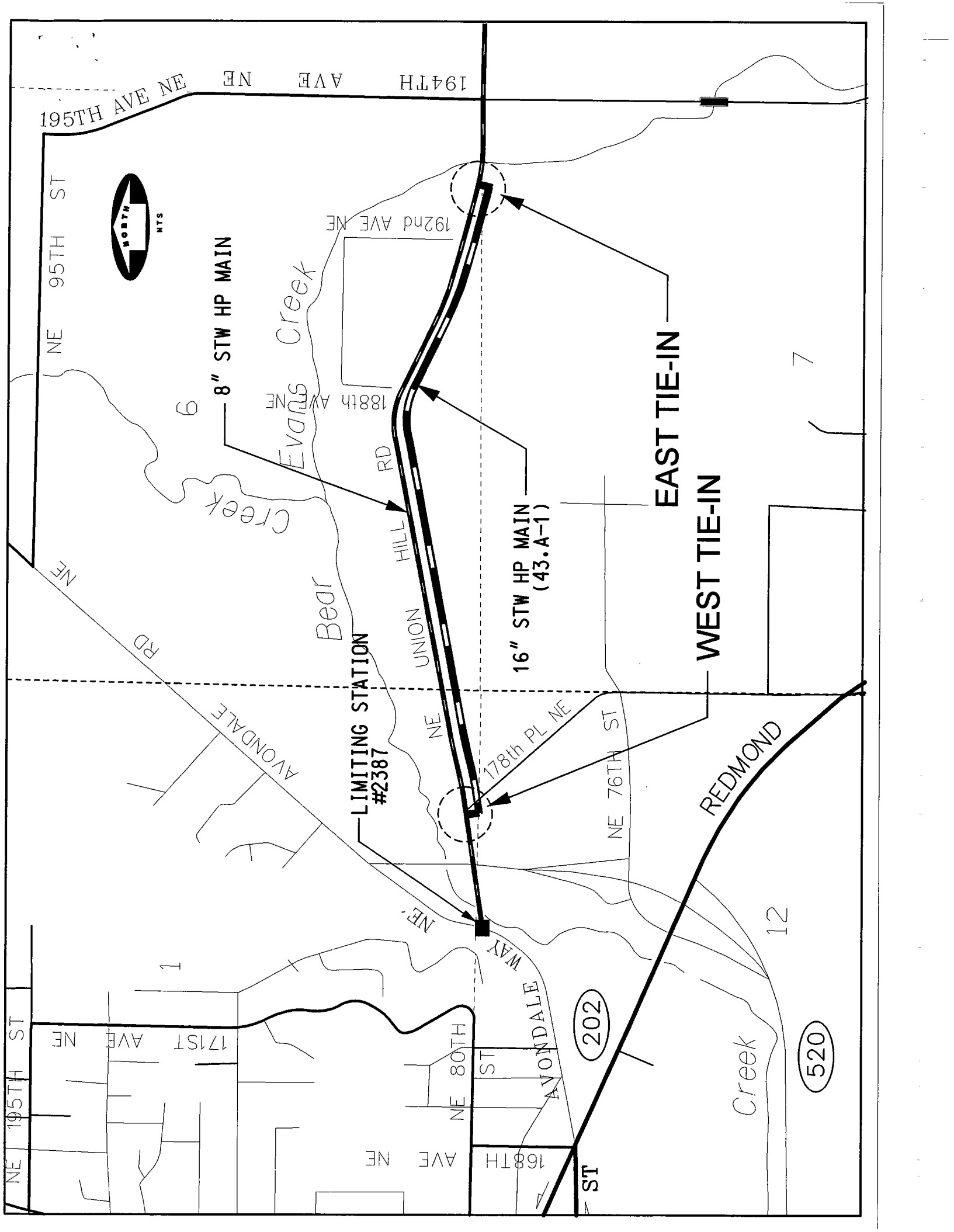
Sincerely,

Kaaren Daugherty, PE
Consulting Engineer – Safety, Standards and Work Practices

Enclosure

cc: Kimberly Harris

RMS
TR



6
8" STW HP MAIN

16" STW HP MAIN
(43.A-1)

LIMITING STATION
#2387

EAST TIE-IN

WEST TIE-IN

194TH AVE NE
195TH AVE NE

95TH ST

192nd AVE NE

Evans Creek

188th AVE NE

UNION HILL RD

Bear Creek

178th PL NE

NE 76TH ST

REDMOND

AVONDALE RD

NE

NE

NE 195TH ST

171ST AVE NE

NE 80TH ST

168TH AVE NE

202

520

AVONDALE WAY

Creek

12

7

**Puget Sound Energy
16" Redmond Supply - Phase I**

1	Line Identifier	43.A-1
2	Pipeline Mileage	1.06 (5572')
3	Installation Date	12/17/02
4	Diameter	16.0"
5	Wall thickness	0.375
6	Grade	X56
7	Type of Seam	Seamless
8	% of pre-1970 ERW pipe	N/A
9	Pipe Manufacturer	Pioneer Pipe
10	Coating Type	Extruded Polyolefin (40 mils)
11	Cathodic Protection system	Impressed Current (rectifier protected)
12	MAOP/MOP	500/300 psig
13	% SMYS @ MAOP	19.0%
14	Commodity Transported and End Markets	Natural Gas
15	Leak detection type and capabilities	See Note 1
16	Type of Overpressure protection	Relief valve at Redmond Gate Station
17	Type of valve operators	24-turn worm gear
	Number of each	4
	Back-up method, if any	None
	Type of control	Manual
	Check valves installed and where	None
	Control room location	None
18	% of pipeline mileage in class 3 and 4 location	100% Class 3
	Areas considered to be unusually sensitive	None
19	Hydrostatic Test Information:	
	Pressure (psi)	793
	Date and duration	12/10/02 - 12/11/02, 24-hours
	Test pressure as a percent of SMYS	30.2%
20	Internal Inspection Information:	
	% of pipe that can be internally inspected	0%
	Inspection dates	N/A
	Type of Inspection tool	N/A
21	Failure History: Releases, Leaks and Overpressure	N/A
22	Length of pipe in slide zones	0.0'
23	Maximum flow rates	1.6 MMCFH
24	Compressor Available Horsepower	N/A
25	Associated Storage Tanks	N/A
26	Company Contract Person	Kaaren Daugherty
	Phone Number	(425) 462-3748
	Mailing Address	PO Box 90868 (XRDLL)
		Bellevue, WA 98009-0868

Note 1: Leak surveys are performed at regular intervals as specified in the regulations using either flame ionization or optical methane detectors. In addition, real time pressure monitoring is performed that may indicate leaks of larger magnitudes.

PSE Proposed 16" HP main Union Hill Road Phase I - Proximity to structures

Address	Description	Distance from proposed 16" HP	Business Name
17530 NE Union Hill Rd	Office Bldg	52'	Avondale Gateway Office
17602 NE Union Hill Rd	Office Bldg	85'	Redmond Business Park
17750 NE Union Hill Rd	Garden Nursery	45'	Bear Creek Bonsai (looks like a house)
17950 NE Union Hill Rd	School/Day Care	67'	T.B. Learning Center
18816 NE Union Hill Rd	Office Bldg	53'	Cadman Sand & Gravel
18816 NE Union Hill Rd	shed	60'	Cadman Sand & Gravel
18816 NE Union Hill Rd	shed	53'	Cadman Sand & Gravel
18816 NE Union Hill Rd	shed	69'	Cadman Sand & Gravel
19150 NE Union Hill Rd	Office Bldg	44'	Olympian Precast Inc.
19205 NE Union Hill Rd	Office Bldg	67'	BJ Roofing
19340 NE Union Hill Rd	Office Bldg	55'	Legacy Roofing