

EarthLab Energy Assistance and Thermal Safety Research Team

Sam Kay

kay.samuel.j@gmail.com

Visiting Assistant Professor
Department of Geography,
University of Washington



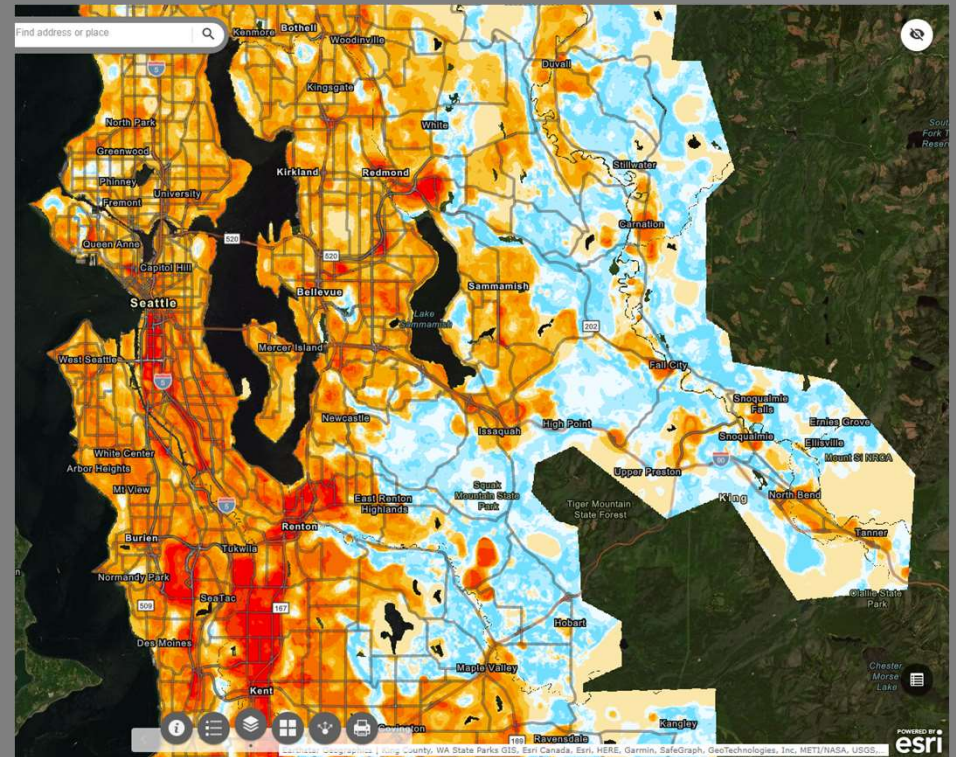
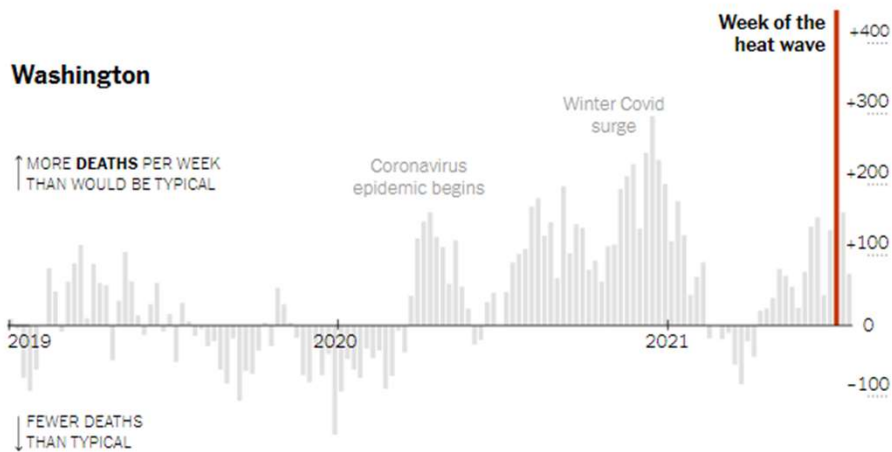
EARTHLAB

UNIVERSITY *of* WASHINGTON

An Incomplete Thermal Safety Net

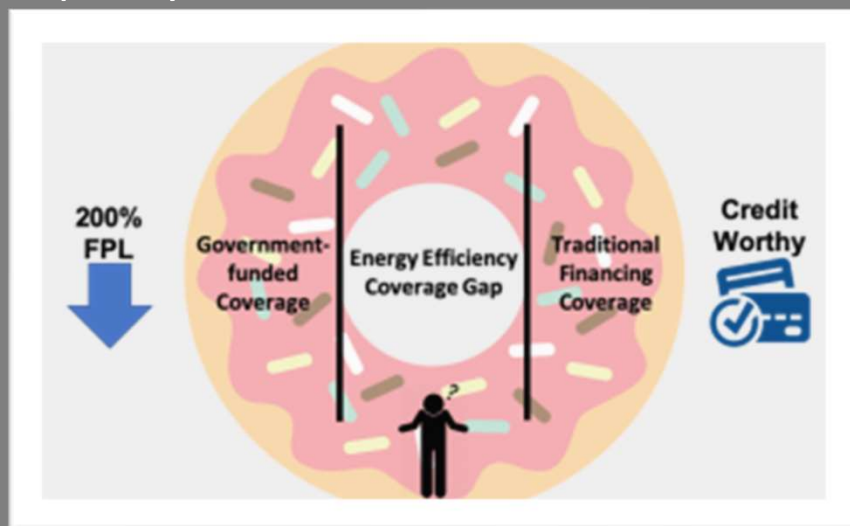
Hidden Toll of the Northwest Heat Wave: Hundreds of Extra Deaths

By [Nadja Popovich](#) and [Winston Choi-Schagrin](#) Aug. 11, 2021



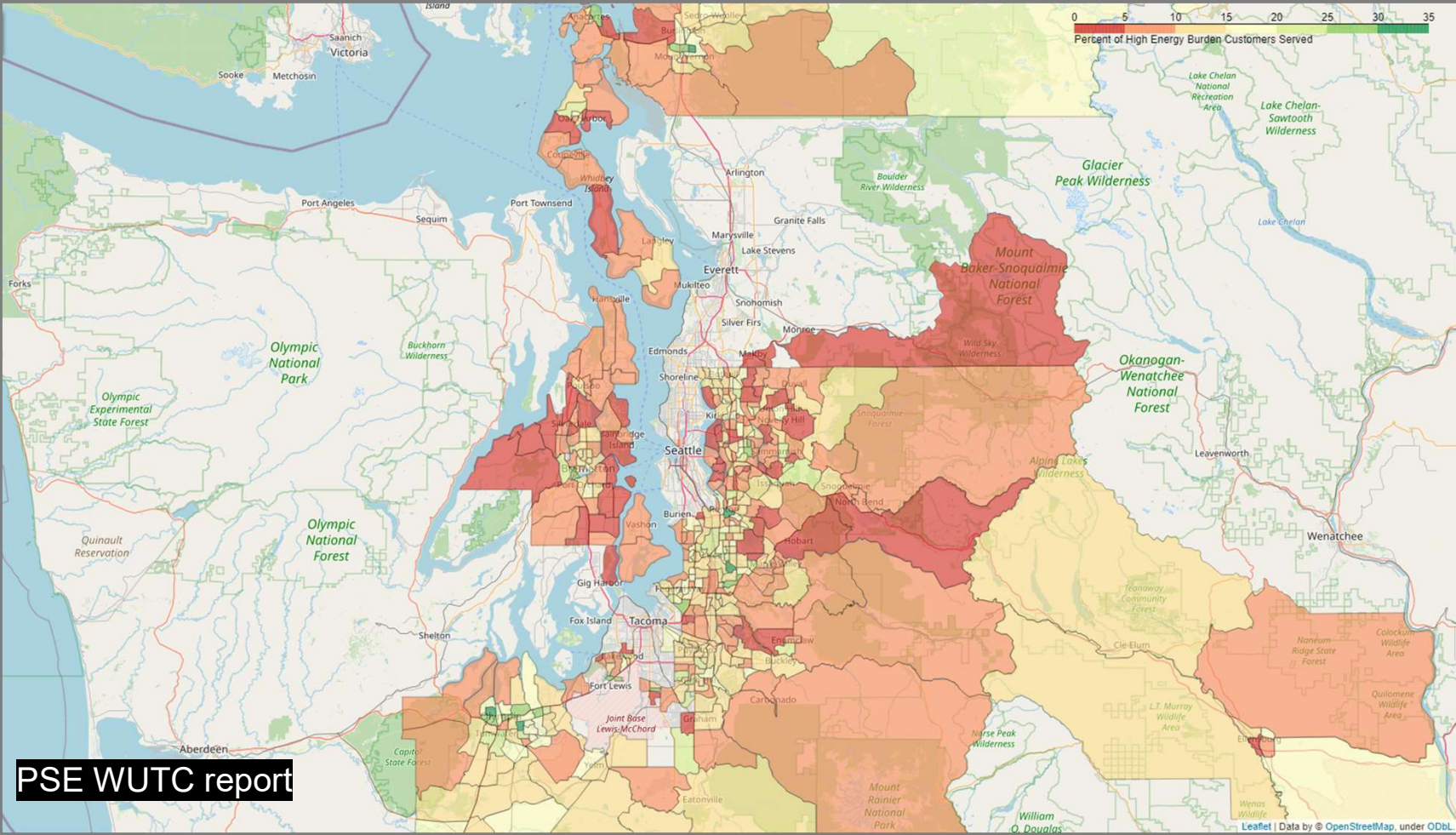
Weatherization is needed to improve: thermal safety, energy costs, indoor air quality

- Government-funded weatherization is reaching a very low percentage of eligible households
- Many households that can't afford weatherization independently also don't qualify for WAP



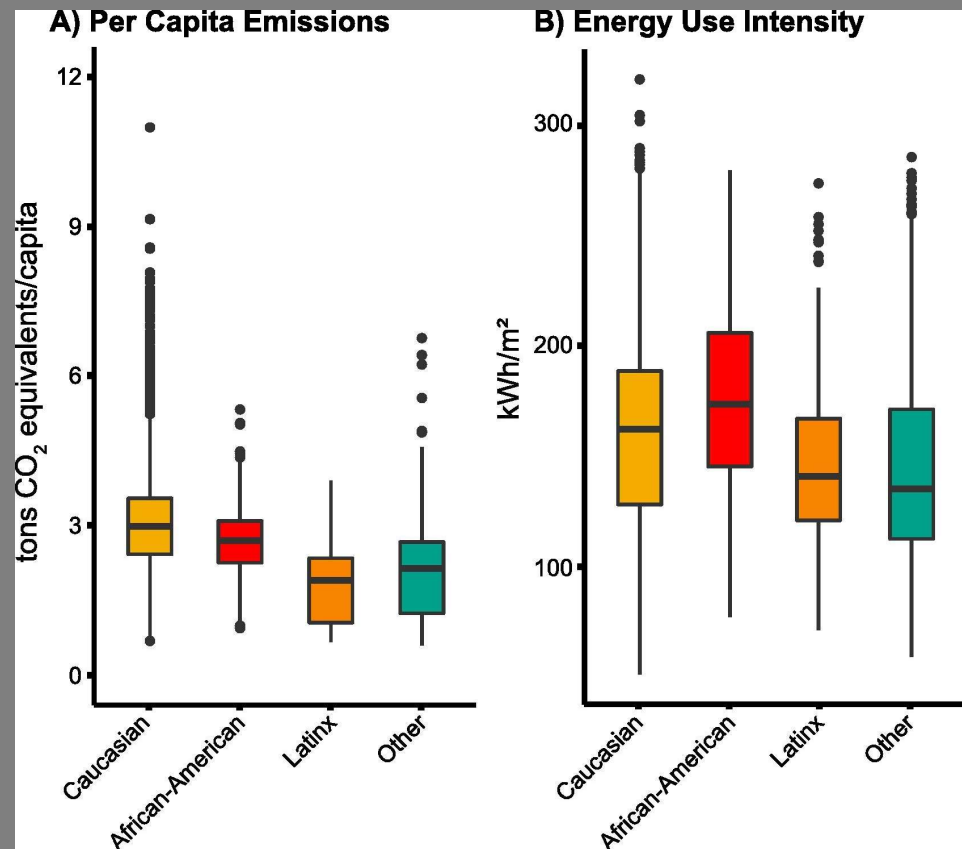
Forrester, S. P., & Reames, T. G. (2020). Understanding the residential energy efficiency financing coverage gap and market potential. *Applied Energy*, 260, 114307.

Initial findings: uptake gaps are even larger than we thought



Housing justice ↔ Energy justice

- Low-income households spend 16.3% of income on energy vs. 3.5% for non low-income households
- Very different energy use intensity by race owing largely to housing inequity
- Energy costs drive homelessness



From Goldstein, B., Reames, T. G., & Newell, J. P. (2022). Racial inequity in household energy efficiency and carbon emissions in the United States: An emissions paradox. *Energy Research & Social Science*, 84, 102365.

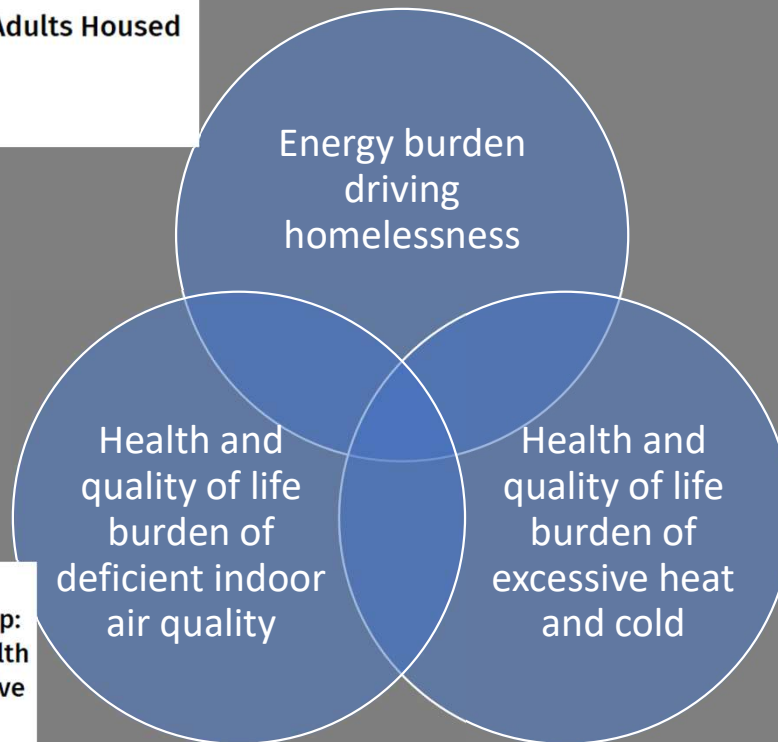
Weatherization in a Cumulative Impacts Context

ELDER HOMELESSNESS: PART II

Energy Assistance Programs: Keeping Older Adults Housed and Warm

Bottomley, Jennifer M. PhD, MS, PT

[Author Information](#)



Climate change and temperature extremes: A review of heat- and cold-related morbidity and mortality concerns of municipalities

[Carina J. Gronlund^a](#), [Kyle P. Sullivan^b](#), [Yonathan Kefelegn^c](#), [Lorraine Cameron^c](#), [Marie S. O'Neill^b](#)

[Show more](#)

[+ Add to Mendeley](#) [Share](#) [Cite](#)

<https://doi.org/10.1016/j.maturitas.2018.06.002>

[Get rights and content](#)

RESEARCH REPORTS

Federal Weatherization and Health Education Team up: Process Evaluation of a New Strategy to Improve Health Equity for People With Asthma and Chronic Obstructive Pulmonary Disease

De Souza, Rachael MN, MPH, RN; Evans-Agnew, Robin PhD, RN; Espina, Christine DNP, MN, RN

[Author Information](#)

Journal of Public Health Management and Practice 25(1):p. E21-E24, January/February 2019. | DOI: 10.1097/PHH.0000000000000786

Shutoffs are unsafe, and disproportionately impact the most vulnerable households

- Massive uptake gap for both energy assistance and weatherization
- Little awareness of energy assistance
- Limited access due to language barriers, documentation barriers, and other administrative burdens
 - Documentation (whether income or medical, etc.)
 - Hours to reach the right agency/person
 - Lost childcare, eldercare, and work hours
- Many who are energy burdened are not eligible for some aid
- 32-90 range is not safe in many cases, based on both underlying vulnerability (age, disability status, health burden) and weatherization
- Shutoff prevention through vastly increased outreach for energy assistance and weatherization

Thank you

Sam Kay

Acting Assistant Professor, Department of Geography
University of Washington
kay.samuel.j@gmail.com