



**MISSOULA PLAN**

**- WASHINGTON -**

**WITA COMPANIES –  
FORECAST**



# Current Intrastate Access Rates

\$0.10 - \$0.15\*

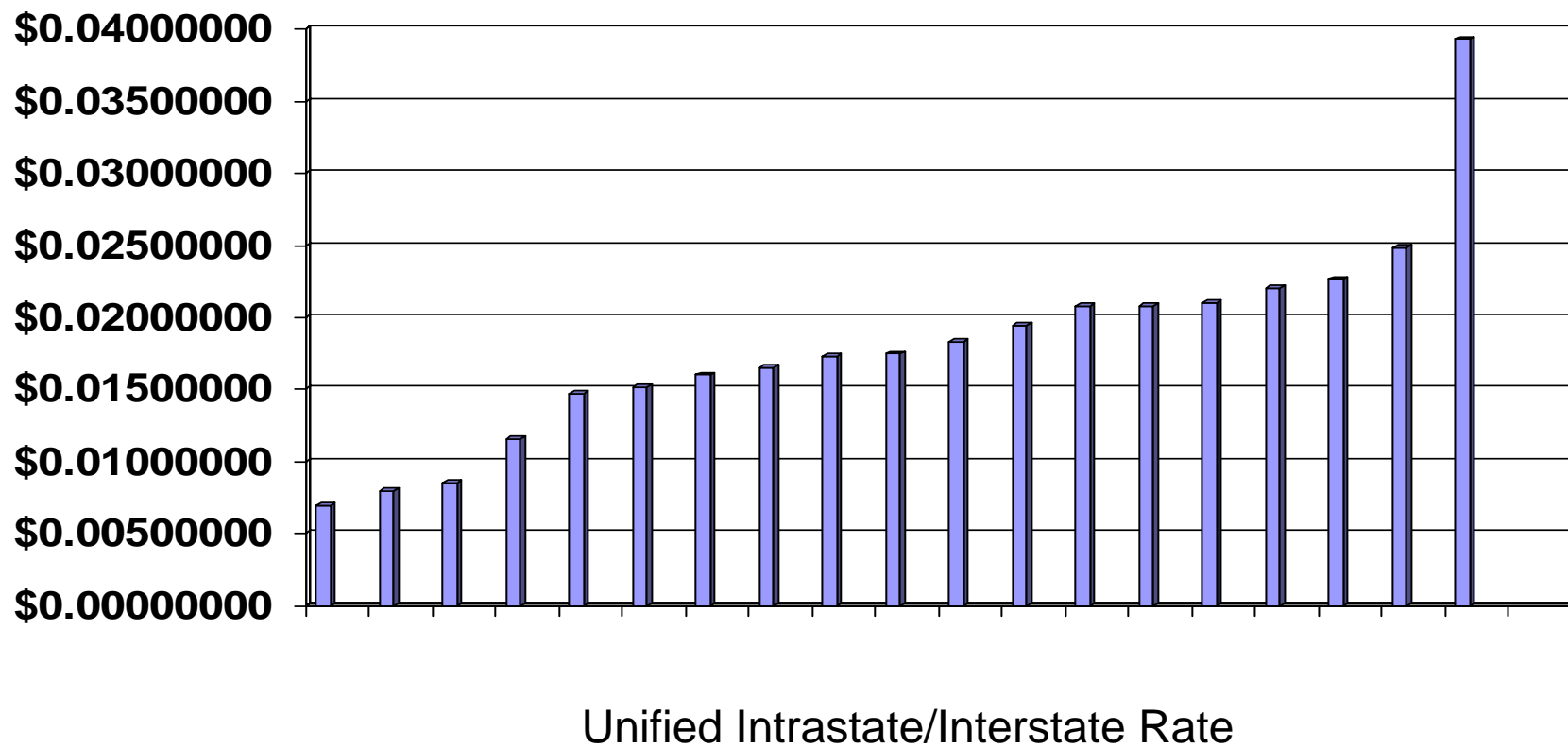
# Missoula Plan Intrastate Access Rates

\$0.008 - \$0.039309\*\*

\*General range. Some higher, some lower.

\*\*Rates shown are at end of transition.

# RANGE OF RATES





# WITA Members' Intrastate Switched Access Revenue

Current: \$50,219,000

Post Missoula: \$5,420,000

Average per minute decrease: \$0.0771

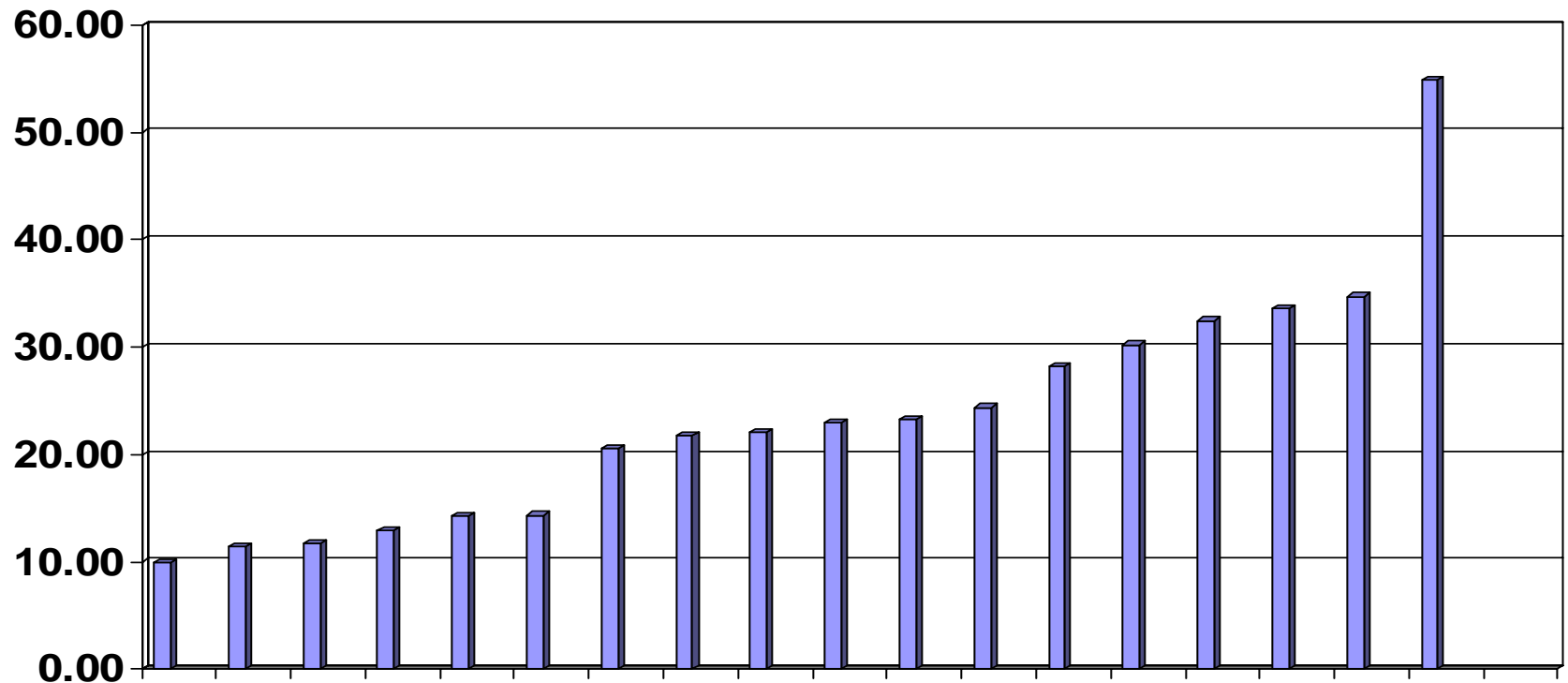


# SLC Increases – WITA Members

- Year One \$2,328,000
- Total \$6,983,000

# WITA Members

## Total Transition Per Line Per Month





# WITA Members

Average Transition Per Line: \$174.97

Average Transition Per Line Per Month:  
\$14.58

Average Restructure Mechanism Per Line  
Per Month: \$12.33



# WITA Members

Median Transition Per Line Per Month:  
\$22.55

Company Average Transition Per Line Per  
Month: \$23.56

High: \$54.81 Per Line Per Month

Low: \$9.96 Per Line Per Month





# WITA Members

Median Annual Restructure Mechanism  
Support: \$771,064



# USF Access Rate Issue

U-85-23 - \$0.00152/minute

Produces More Revenue Than  
First Year Transition