



2012 Qualifying Events Report

March 12, 2012 Event

Filed on June 5, 2012

Table of Contents

Table of Contents	2
Event Description	3
Date of event	3
Event Type	3
Service Areas Affected	3
Number of Customers Affected	3
Summary of System Impacts	3
Mobilization Summary	3
Major Event Day – Qualification	5
Qualified Events - 2012	5
Current Event – Calculation Detail	5
Cumulative list of events that have qualified	5
Event Restoration – Cost Summary	6
Restoration Cost Detail by Qualifying Event	6
YTD Storm Restoration Cost Detail – Through April 30, 2012	6
Detail Documents	7
Restoration Cost Detail – Current Event	8
IEEE-1366 - Detailed List of Distribution Circuits with Outages	9
Terms, Codes and Definitions Used on Detail Reports	12
Terms, Codes and Definitions Used on Detail Reports	12
Media Coverage	14

Event Description

Date of event

March 12, 2012

Event Type

Wind and rain storm

Service Areas Affected

Whatcom, Skagit, Island, and Thurston Counties

Number of Customers Affected

Approximately 55,130 customers were without power over the course of this event

Summary of System Impacts

Total Number of Outages	193
Distribution Circuits Totally Out	33
Distribution Circuits Partially Out	160

Transmission Circuits Affected	6
Substations Totally Off-line	5

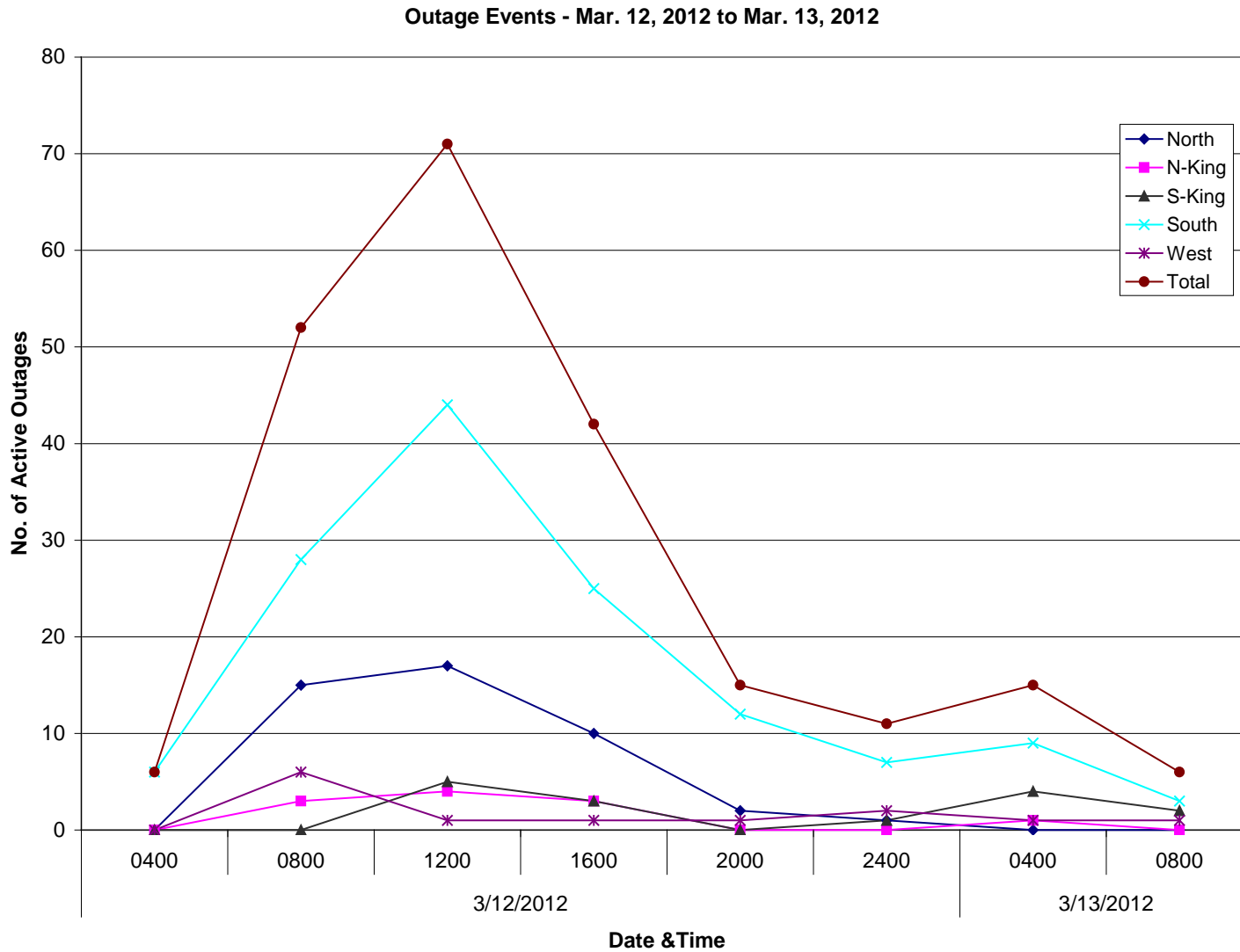
Mobilization Summary

Operating Bases

Base	Date Opened	Time Opened	Date Closed	Time Closed
Whatcom	03/12/2012	07:30	03/12/2012	18:00
Skagit	03/12/2012	07:30	03/12/2012	18:00
Island	03/12/2012	07:30	03/12/2012	18:00
Thurston	03/12/2012	07:00	03/12/2012	22:00

Emergency Operations Center

EOC	Date Opened	Time Opened	Date Closed	Time Closed
	03/12/2012	09:45	03/12/2012	17:00



Major Event Day – Qualification

IEEE 1366 Method

IEEE 1366 was established to present a set of terms and definitions which can be used to foster uniformity in the development of distribution service reliability indices, to identify factors which affect the indices, and to aid in consistent reporting practices among utilities. Also, it provides guidance for new personnel in the reliability area and tools for internal as well as external comparisons. The Major Event Day definition was created as part of IEEE 1366 to allow for consistent calculation of reliability metrics between utilities and enable more valid comparisons with other utility reliability metrics.

IEEE Major Event Day Calculation (2.5 BETA METHOD)

1. A threshold on daily SAIDI is computed once a year, following year end.
2. Assemble the 5 most recent years of historical values of SAIDI/day.
3. Discard any days in the data set that has a SAIDI/day of zero.
4. Find the natural logarithm of each value in the data set.
5. Compute the average Alpha and the standard deviation (Beta) of the natural logarithms computed in step 4.
6. Compute the threshold Tmed where $Tmed = \exp(\text{Alpha} + 2.5 * \text{Beta})$
7. Any day in the next year with SAIDI > Tmed is a major event day.

Puget Sound Energy's Major Event Threshold for 2012: 5.38 Minutes

Qualified Events - 2012

Current Event – Calculation Detail

Event Date	Total Customer Minutes	Average Customer Count	Daily SAIDI – Customer Minutes /Customer Count
01/18/2012	1,374,545,559	1,091,788	1,258.99
03/12/2012	11,004,046	1,092,611	10.07

Cumulative list of events that have qualified

Date(s)	T-med Score	O&M – Deferrable Accumulation
01/18/2012	1,258.99	\$8,000,000 ^{Note}
03/12/2012	10.07	\$0

Note In PSE's April 16, 2012 filing, YTD total repair costs were shown instead of the amount that meets the \$8 million deferral threshold.

Event Restoration – Cost Summary

Restoration Cost Detail by Qualifying Event

Date	Qualified Events Deferred Account	Capital	C&D Costs Recoverable from Direct Billings (Costs Not Yet Billed)	O&M – Not Deferrable	O&M – Deferrable Accumulation	Total O&M	Total
01/18/2012	\$58,541,405 (r)	\$5,411,159 (r)	\$0	\$1,567,813 (r)	\$8,000,000 ^{Note}	\$68,109,218 (r)	\$73,520,377 (r)
03/12/2012	\$420,446	\$120,162	\$0	\$41,776	\$0	\$462,223	\$582,385

(r) Reflects updated repair costs through April 30, 2012

Note: In PSE's April 16, 2012 filing, YTD total repair costs were shown instead of the amount that meets the \$8 million deferral threshold.

YTD Storm Restoration Cost Detail – Through April 30, 2012

Qualified Events Deferred Account	Capital	C&D Costs Recoverable from Direct Billings (Costs Not Yet Billed)	O&M – Not Deferrable	O&M – Deferrable Accumulation	Total O&M	Total
\$58,961,851 (r)	\$5,531,321 (r)	\$0	\$1,609,590 (r)	\$8,000,000 ^{Note}	\$68,571,441 (r)	\$74,102,762 (r)

(r) Reflects updated repair costs through April 30, 2012

Note: In PSE's April 16, 2012 filing, YTD total repair costs were shown instead of the amount that meets the \$8 million deferral threshold.

Qualifying Storm Event
March 12, 2012

Detail Documents

Restoration Cost Detail – Current Event

Detailed List of Distribution Circuits with Outages

Terms, Codes and Definitions Used on Detail Reports

Newsprint Media Coverage

Restoration Cost Detail – Current Event

Puget Sound Energy							
March 12, 2012 - Storm Damage Repair Costs							
	Qualifying Events Deferred Account	Capital	C&D Recoverable from Direct Billings (Costs Not Yet Billed)	O&M - Not Deferrable	O&M - Deferrable Accumulation	Total O&M	Total
Labor							
ST		\$ -		\$ -	\$ 13,138	\$ 13,138	\$ 13,138
OT		\$ -		\$ -	\$ 22,452	\$ 22,452	\$ 22,452
Total Labor	\$ -	\$ -	\$ -	\$ -	\$ 35,590	\$ 35,590	\$ 35,590
Labor OH		\$ 238		\$ 10,377	\$ 19,296	\$ 29,673	\$ 29,910
Materials		\$ 12,026		\$ -	\$ 14,118	\$ 14,118	\$ 26,145
Contractors		\$ 85,940		\$ -	\$ 333,517	\$ 333,517	\$ 419,457
Other Direct Charges		\$ -		\$ -	\$ 3,662	\$ 3,662	\$ 3,662
Fleet		\$ 53		\$ -	\$ 13,853	\$ 13,853	\$ 13,905
Other Assessments		\$ 21,905		\$ 31,400	\$ 411	\$ 31,811	\$ 53,716
Deferred Expenses	\$ 420,446				\$ (420,446)	\$ (420,446)	\$ 0
	<u>\$ 420,446</u>	<u>\$ 120,162</u>	<u>\$ -</u>	<u>\$ 41,776</u>	<u>\$ 0</u>	<u>\$ 41,776</u>	<u>\$ 582,385</u>

IEEE-1366 - Detailed List of Distribution Circuits with Outages

NUMBER	DATE	TIME	CKT	MPG	CAZ	EQT	CUST.OUT	CUST.MIN
E568565075	3/12/2012	2:26:34	LTA-18	ECA	TV	OCO	438	79,468
E124540362	3/12/2012	2:36:39	SWE-23	EBJ	TO	OHR	540	52,929
E820563280	3/12/2012	3:10:32	RAI-12	ECC	TF	OCO	1,655	190,270
E872078722	3/12/2012	3:13:36	RAI-11	ECC	TV	OCO	116	78,810
E906653293	3/12/2012	3:19:00	TLN-0181	ECA	TV	OCO	3,538	895,114
E008290386	3/12/2012	3:19:00	TLN-0235	ECA	TV	OCO	4,003	1,008,756
E255174852	3/12/2012	3:30:20	TIL-23	ECA	TF	OCO	736	251,467
E756916995	3/12/2012	4:05:32	BLU-16	ECC	TV	OFC	567	129,541
E651777108	3/12/2012	4:08:05	LGY-13	EAD	TF	OFU	91	5,542
E323070705	3/12/2012	4:08:47	AIR-23	ECC	TV	OCO	173	78,060
E041262872	3/12/2012	4:09:18	ROC-17	ECC	TV	OCO	45	17,897
E963706698	3/12/2012	4:09:59	GRI-15	ECC	TV	OCO	416	289,959
E072319280	3/12/2012	4:17:27	GRI-13	ECC	TV	OPO	732	588,199
E302782254	3/12/2012	4:34:34	ROC-16	ECC	TV	OCO	35	18,880
E804231916	3/12/2012	4:44:38	PTR-16	EAA	TF	OCO	744	593,217
E833790480	3/12/2012	4:46:20	PAT-17	ECC	TV	OCO	283	206,213
E381525738	3/12/2012	4:47:02	MIL-23	ECE	TV	OCO	13	4,836
E590334922	3/12/2012	4:47:24	PTR-14	EAA	TV	OTR	99	29,942
E652714054	3/12/2012	4:50:04	CAP-15	ECC	TF	OCO	52	18,249
E509788131	3/12/2012	4:52:02	CHM-13	ECF	TV	OCO	20	4,379
E464883879	3/12/2012	4:52:54	LOL-21	ECD	TV	OCO	30	7,653
E036159588	3/12/2012	4:54:16	GRI-16	ECC	TV	OCO	39	28,265
E646046069	3/12/2012	5:02:42	AIR-22	ECC	TV	OCO	58	34,063
E663603340	3/12/2012	5:15:05	ORT-22	ECA	TV	OCO	317	77,956
E567643821	3/12/2012	5:20:25	BRO-15	EAD	EF	OCO	16	5,033
E101859659	3/12/2012	5:25:04	SWA-12	EAD	TV	OFU	2	872
E081707085	3/12/2012	5:26:20	KIN-21	ECE	EF	OSV	29	4,514
E287757686	3/12/2012	5:35:33	ROC-26	ECC	TV	OCO	50	30,473
E460322142	3/12/2012	5:57:31	KIN-24	ECE	EF	OTR	7	2,040
E899833977	3/12/2012	5:59:29	FLD-13	EAD	TV	OCO	118	76,615
11033564	3/12/2012	5:59:42	FLD-13	EAD	TV	OCO	10	6,640
E272047672	3/12/2012	6:00:42	WOO-25	ECA	TV	OCO	31	8,658
E095143693	3/12/2012	6:03:25	PET-13	EAC	TV	UNK	630	110,428
E767723691	3/12/2012	6:12:04	GBK-13	EAD	TV	OCO	11	2,529
E136516511	3/12/2012	6:14:11	RAI-12	ECC	TV	OAR	120	108,358
E280143551	3/12/2012	6:15:26	PET-15	EAC	EF	OCO	28	14,128
E921365691	3/12/2012	6:16:25	CRE-15	EAD	TV	OCO	300	50,030
E520687371	3/12/2012	6:27:28	WLK-15	ECA	EF	OCO	5	1,903
E428857103	3/12/2012	6:35:26	CPV-12	EAD	TV	OCO	8	4,397
E340360150	3/12/2012	7:02:23	NLM-16	EAC	TV	OCO	319	87,603
E767361413	3/12/2012	7:03:45	NBO-22	EBD	PO	OSV	1	114
E897491797	3/12/2012	7:09:51	ALG-15	EAC	TV	OFU	8	1,481
E711120917	3/12/2012	7:11:00	PAT-15	ECC	TF	OCO	1,992	320,712
E365849259	3/12/2012	7:12:29	PIK-21	EBF	EF	OCO	1,061	122,563
E690700570	3/12/2012	7:16:58	BLU-13	ECC	TV	OCO	100	9,403
E951201724	3/12/2012	7:22:40	ELD-25	ECC	TV	OPO	1	726
E425696056	3/12/2012	7:29:10	HAP-16	EAA	TV	OCO	17	2,394
E721172573	3/12/2012	7:29:16	BIG-12	EAC	BA	OFU	9	1,087
E799655728	3/12/2012	7:30:57	ALG-12	EAC	TV	OSV	1	234
E762444232	3/12/2012	7:32:28	MIL-17	ECE	TF	OCO	6	2,181
E207000949	3/12/2012	7:35:34	ING-15	EBD	EF	UTR	45	17,450
E474957967	3/12/2012	7:36:01	LAC-13	ECC	TV	OCO	41	16,768
E609049511	3/12/2012	7:37:59	CRE-16	EAD	TV	OCO	10	4,664

Qualifying Storm Event
March 12, 2012

E459057088	3/12/2012	7:38:09	FRG-25	ECC	TF	OCO	1,395	158,558
E599179001	3/12/2012	7:42:03	FRG-24	ECC	TV	OCO	5	625
E261343354	3/12/2012	7:51:51	LTA-18	ECA	TV	OCO	438	115,260
E019110897	3/12/2012	7:54:23	WOL-23	ECC	TF	OCO	2,280	379,886
E945033645	3/12/2012	7:56:25	FRG-22	ECC	TV	OTR	284	177,098
E494119520	3/12/2012	7:58:19	ELD-23	ECC	TV	OCO	2	645
E499796475	3/12/2012	8:00:00	SHD-17	EBI	SO	OTH	4	212
E253188833	3/12/2012	8:00:19	FLD-12	EAD	TV	OCO	4	2,682
E241174299	3/12/2012	8:02:26	SWI-15	ECC	TV	OCR	15	11,154
E873998992	3/12/2012	8:09:37	CHA-15	ECC	TO	OCO	45	17,342
E016046642	3/12/2012	8:11:00	LUH-14	ECC	TF	OCO	3,418	765,632
E954587373	3/12/2012	8:11:10	ALG-15	EAA	TV	OCO	13	3,612
E906392513	3/12/2012	8:12:04	BLU-16	ECC	TV	OTF	3	1,464
E577683195	3/12/2012	8:17:57	LAC-17	ECC	TV	OFC	15	15,481
E885671758	3/12/2012	8:23:00	TLN-0224	ECC	TV	OCO	10,267	1,503,431
E693929239	3/12/2012	8:27:06	RAI-13	ECC	TV	OPO	25	15,848
11037055	3/12/2012	8:29:00	TLN-0147	ECC	TV	OCO	3,993	27,951
E037476256	3/12/2012	8:30:01	CHA-12	ECC	TV	OCO	246	92,246
E709788523	3/12/2012	8:34:50	SWI-16	ECC	TV	OCO	42	19,537
E200211315	3/12/2012	8:35:17	VWY-15	EAA	TV	OCO	17	8,053
E829299258	3/12/2012	8:35:52	CHM-14	ECF	UN	OFU	1	125
11033600	3/12/2012	8:38:36	KIN-21	ECE	TV	OCO	24	4,570
E163819494	3/12/2012	8:41:00	ALG-15	EAA	SO	OPO	151	14,194
E700637178	3/12/2012	8:42:00	PAT-13	ECC	TF	OCO	1,286	183,898
E086290499	3/12/2012	8:44:42	WLK-13	ECA	EF	OTF	4	1,245
E382824604	3/12/2012	8:45:00	WIS-15	EBF	SO	UPT	9	963
11037023	3/12/2012	8:46:00	CHA-15	ECC	TO	OCO	1,599	454,116
E593999615	3/12/2012	8:47:05	SWI-17	ECC	TV	OCO	10	2,489
E320728287	3/12/2012	8:51:15	UHL-23	EBD	TV	OCO	1	85
E566988917	3/12/2012	8:51:47	CHA-16	ECC	TV	OSV	1	314
E745496727	3/12/2012	8:53:10	FWY-11	EBJ	EF	OTR	1	265
11033726	3/12/2012	8:56:00	MIL-17	ECE	TV	OCO	1,716	49,764
E573427232	3/12/2012	8:57:54	SEH-12	EAA	EF	USV	1	207
E701449531	3/12/2012	8:58:34	OLD-23	EAA	TV	OCO	1	90
E299000858	3/12/2012	9:09:06	JHO-16	ECC	TV	OCO	42	12,974
E717164750	3/12/2012	9:22:09	HAW-11	ECC	TV	OCO	267	42,146
E045466775	3/12/2012	9:44:30	MCA-15	ECC	TV	OCO	19	5,178
E013970938	3/12/2012	9:50:10	ANA-16	EAC	EF	OTR	3	867
E204030470	3/12/2012	9:52:49	COT-16	EBD	EF	OTF	1	129
E105564831	3/12/2012	9:56:28	HAP-16	EAA	TV	OCO	31	6,558
E639090796	3/12/2012	9:58:20	BCH-13	EAA	TV	OTF	4	763
E201682818	3/12/2012	10:03:24	BLU-13	ECC	TV	OPI	90	23,904
E338045559	3/12/2012	10:06:00	SWI-13	ECC	TO	OCO	988	104,728
E480852033	3/12/2012	10:25:00	WOB-27	EAA	TV	OSV	1	144
E731639567	3/12/2012	10:37:43	KAP-15	ECA	EF	OJU	31	5,899
E721831749	3/12/2012	10:45:15	HOL-12	ECA	EF	OCO	15	1,181
E065166787	3/12/2012	11:02:51	PAT-15	ECC	TV	OFC	52	13,528
E152894470	3/12/2012	11:10:54	LEA-17	EBI	EF	OCO	3,614	643,751
E616774065	3/12/2012	11:41:02	AIR-23	ECC	TV	OCO	173	53,970
E123366597	3/12/2012	11:51:32	TLN-0012	EBD	TV	OCO	710	30,151
E795759261	3/12/2012	12:00:20	PLU-25	ECC	TV	OTF	5	373
E407320746	3/12/2012	12:04:58	ROC-17	ECC	TV	OCO	3	495
E069609178	3/12/2012	12:11:23	HAW-11	ECC	TV	OCO	267	31,671
E924077763	3/12/2012	12:24:43	LON-22	ECC	TV	OCO	14	3,784
E786128790	3/12/2012	12:57:17	KIT-22	EBH	EF	OCN	1	130
E589294257	3/12/2012	13:22:43	OBY-17	ECC	PO	OTF	1	91
E825630113	3/12/2012	13:29:00	HAP-16	EAA	TV	OTF	1	51

Qualifying Storm Event
 March 12, 2012

E763212709	3/12/2012	13:48:46	GRV-16	ECA	TV	OCO	22	5,439
E378047115	3/12/2012	13:52:45	BLU-17	ECC	TV	OCO	3	727
E796733040	3/12/2012	14:17:29	CUS-16	EAA	EF	OCO	16	4,488
E318499640	3/12/2012	14:34:11	PLG-13	ECC	TV	OCO	12	982
E802013344	3/12/2012	14:47:48	ASB-13	EBJ	EF	OTR	5	1,311
E854047275	3/12/2012	14:54:00	BIG-15	EAC	CP	OCO	1	176
E053148130	3/12/2012	15:03:02	KAP-15	ECA	TV	OCO	2	3,044
E865486706	3/12/2012	15:09:46	CHA-12	ECC	TV	UFJ	64	25,295
E568349381	3/12/2012	15:14:53	BRO-15	EAD	EF	OFU	24	1,923
11033741	3/12/2012	15:15:00	WLK-15	ECA	TV	OPO	11	9,240
E639523994	3/12/2012	15:15:51	AIR-22	ECC	TO	OCO	18	2,109
E759114195	3/12/2012	15:23:24	MCA-15	ECC	TV	OSV	1	270
E382152247	3/12/2012	15:35:31	SPI-14	EBD	EF	OTF	6	675
11033711	3/12/2012	15:36:49	FRG-24	ECC	TV	OCO	2	316
E999300256	3/12/2012	15:45:16	KIN-24	ECE	EF	OTF	1	58
E709954817	3/12/2012	16:07:24	BAR-15	ECC	EF	OTF	3	167
E197690382	3/12/2012	16:10:47	GRI-15	ECC	TV	OCO	24	3,269
E843784239	3/12/2012	16:11:47	PAT-15	ECC	TV	OCO	30	3,247
E552016572	3/12/2012	16:34:20	YEL-27	ECC	TV	OTF	3	464
E981215497	3/12/2012	16:41:51	CUS-13	EAA	EF	OTF	1	58
E788324735	3/12/2012	16:57:21	AIR-23	ECC	TV	OCO	54	8,081
E773133177	3/12/2012	16:58:33	NLM-16	EAC	TV	OFU	1	51
E938221575	3/12/2012	17:27:36	BLU-16	ECC	TV	OTF	1	222
E370595159	3/12/2012	17:30:14	LON-23	ECC	TV	OCO	4	267
E868702454	3/12/2012	18:07:42	GBK-13	EAD	TV	OFU	12	639
E235631351	3/12/2012	18:16:56	SIL-15	ECD	EF	OTF	2	287
E527159714	3/12/2012	18:52:32	SLA-16	EAA	EF	OTR	1	204
E189505132	3/12/2012	19:07:21	RAI-13	ECC	TV	OCO	26	4,991
11033708	3/12/2012	19:09:00	HAZ-15	EBE	EF	USV	1	355
E270938952	3/12/2012	19:10:40	LON-22	ECC	TV	OTR	2	549
E495731957	3/12/2012	19:17:47	DUT-14	ECA	EF	OCO	1,206	180,457
E658799628	3/12/2012	19:50:55	AIR-23	ECC	TV	OCO	112	15,017
E684219956	3/12/2012	20:00:35	ROC-26	ECC	TV	OTF	1	105
11033697	3/12/2012	20:07:00	FRG-22	ECC	TV	OCO	6	498
E056702529	3/12/2012	20:46:28	ORT-22	ECA	AO	UPT	1	337
E858525932	3/12/2012	21:01:52	CHR-22	ECE	TV	OCO	17	4,575
11033699	3/12/2012	21:06:10	ELD-25	ECC	TV	OTR	1	172
E155470767	3/12/2012	21:07:05	KIN-21	ECE	TV	OCO	3	1,125
E642962466	3/12/2012	21:10:00	MIL-17	ECE	TV	OCO	54	5,979
E649743470	3/12/2012	21:53:49	BLU-16	ECC	TV	OFC	1	250
E365587660	3/12/2012	21:57:37	CHA-12	ECC	EF	OTF	1	62
E420346426	3/12/2012	22:27:58	AIR-23	ECC	TV	OTF	3	534
E657692568	3/12/2012	22:38:35	LAT-14	EBJ	EF	OIN	1	64
E668845825	3/12/2012	23:43:07	RAI-11	ECC	TV	OTF	2	340
E152090014	3/12/2012	23:43:58	SOO-25	EBI	TV	OFU	3	456

Terms, Codes and Definitions Used on Detail Reports

Terms, Codes and Definitions Used on Detail Reports

Notification	[Notification Number] A number assigned by SAP, identifying the outage record
Date	The date of the outage
Time	The time of the outage
Circuit	[Reference Circuit] The circuit identifier for the affected circuit

Area	[Maintenance Planner Group] A code representing the energy, region and service center	
EAA – Bellingham	EBJ – South King	
EAB – Lynden	EBK – Southwest King	
EAC – Skagit	EBL – Vashon	
EAD – Whidbey	ECA – Puyallup	
EBD – Redmond	ECC – Olympia	
EBE – Factoria	ECD – Port Orchard	
EBF – Snoqualmie	ECE – Poulsbo	
EBI – Enumclaw	ECF – Port Townsend	

Cause	Cause of Outage	
AO – Accident Other	EF – Equipment Failure	
BA – Bird or Animal	EO – Electrical Overload	
CP – Car Pole	FI – Faulty Installation	
CR – Customer Request	TF – Tree Off Right-of-Way	
DU – Dig-up Underground	TO – Tree On Right-of-Way	
TV – Trees/Vegetation	SO – Scheduled Outage	
UN – Unknown		

Equipment	Affected by, or involved in the outage	
OCN – Connector	OSW – Overhead Switch	
OCO – Overhead Conductor	OTF – Overhead Transformer Fuse	
OCR – Crossarm	OTR – Overhead Transformer	
OFC – Overhead Cut-out	OUP – OH to UG Primary	
OFS – Overhead Fire Signal	OUS – OH to UG Secondary Service	
OFU – Fuse Link/OH Line Fuse	SBF – High-side Bank Fuse	
OGS – Span Guy	SCB – Power Circuit Breaker	
OHR – Overhead Recloser	UOT – Underground Outdoor Term	
OIN – Insulator	UPC – Underground Primary Cable	
OJU- Jump Wire	UPT – Padmount Transformer	
OPI – Overhead Pin Insulator	USV – Underground Service	
OPO – Pole	UTC – Underground Terminal Fuse	
OSV – Overhead Service	UTR – Submersible Transformer	
ORE – Regulator		

CUST OUT	[Customer Out] The number of customers without power for any given outage
-----------------	--

Qualifying Storm Event
March 12, 2012

	record
CUST MIN	[Customer Minutes] The total number of minutes customers were without power for any given record

Media Coverage

The Seattle Times

It's still winter: Wind, rain, snow for Washington

Spring arrives next week, but this week still looks like winter in Washington.

March 12, 2012 - The Associated Press

SEATTLE —

Spring arrives next week, but this week still looks like winter in Washington.

The National Weather Service says a front moving through the state Monday is bringing strong winds and rain to Western Washington, heavy snow to the Cascades and snow in much of north central and northeast Washington.

Forecasters warned of 30 to 45 mph winds with gusts to 65 Monday morning on the coast. Forecasters advised of 20 to 30 mph winds with gusts to 50 mph in parts of the interior of Western Washington.

Forecasters issued a winter storm warning for the Cascades where they expect up to 18 inches of snow Monday. Forecasters also expect significant snow in the northern portions of Eastern Washington.

The Weather Service predicts more cool, showery weather through the week.



Monday, March 12, 2012

Yeah, it's cold out; so what were you expecting for March?

By **Christine Clarridge**

Monday's high temperature of 47 degrees was a full 6 degrees lower than average for the date — despite reports alleging the arrival of so-called spring next week.

In the decades that Chris Burke has worked as a meteorologist at the National Weather Service in Seattle, he's disciplined himself to have no expectations this time of year.

In fact, he's renamed the seasons and declared them to have no ties whatsoever to the solstices and equinoxes celebrated in other parts of the world.

Around here, he said, July and August are "summer," September and October are "fall," winter lasts from November through February and there's no such thing as spring.

He's dubbed March through June "disappointment."

So, he wasn't at all surprised that Monday's high of 47 degrees was about 6 degrees below average for the date, despite reports alleging the arrival of so-called spring next week.

The wet weather and brisk winds that knocked out power in a few areas Monday morning were expected to abate by Tuesday evening, Burke said.

Representatives of Puget Sound Energy and Snohomish County Public Utility District said there were scattered outages, but power was restored quickly in most cases.

PSE spokeswoman Dorothy Bracken said the approximately 34,000 customers who lost power in PSE's service area were mainly in Thurston County, and power for most was back by Monday evening.

Although the wind was reported to have died down significantly Monday evening from morning when warnings were issued, a few felt its fury.

A rowing team of eight was thrown into the frigid waters of Lake Union about 6:30 p.m. by a "sudden gust of wind," the Seattle Police Department said. The department's Harbor Patrol Unit was on site within minutes and retrieved all eight from the water.

Four more people also were pulled from the water, police spokesman Jeff Kappel wrote in the SPD Blotter, after a second shell capsized while the team was pulling up to a pier.

Burke said the showers that plagued the area Monday were predicted to taper off. "By Tuesday, the chance for rain is only 'likely' as opposed to 'definitely.' "

There's no snow in Seattle's forecast, but the low temperatures make it a possibility in some outlying areas, Burke said.



March 12, 2012

Let's hope it's winter's last gasp as more storms expected

By Stacey Mulick

South Sounders might even see a few more snowflakes overnight.

The South Sound, which was battered by rain and wind gusts Monday, will get a slight reprieve from showers today before another storm front moves over the region Wednesday.

The rainy conditions will continue through the end of the week.

"It's going to be pretty cool for this time of year," said Gary Schneider, a meteorologist for the National Weather Service in Seattle.

Snow could mix with the rain during the overnight hours, but the flakes are not expected to stick around or cause problems, he said.

"(There are) definitely no big snow events on the horizon," Schneider said. "It will be these hit-and-miss nuisance-type things."

On Monday, strong wind gusts knocked out power to thousands in Pierce, Thurston and Whatcom counties. Gusts topped out at 44 miles per hour at Joint Base Lewis-McChord. Wind speed mph ranged from the 30s to low 40s elsewhere in the South Sound.

Puget Sound Energy and Peninsula Light Co. crews spent the morning restoring electricity to customers in Bonney Lake, Lakewood, Olympia, Lakebay, Rainier, Tenino and Yelm, among other areas.

A handful of schools in Thurston County had no electricity or partial electricity for part of the day.

Yelm Community Schools dismissed students early because of outages.