

EXAMPLE 1

EXAMPLE 2

SIGNS:

NO. 44 - "NO CLEARANCE"

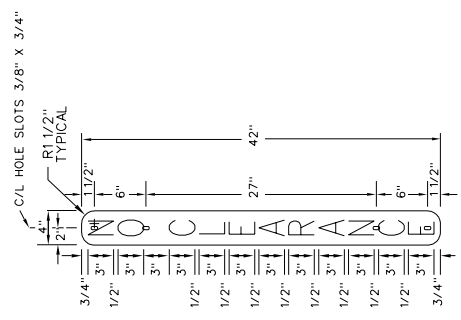
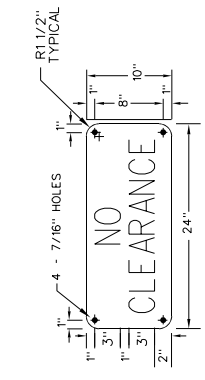
PLACE NO CLEARANCE SIGN ON BUILDING STRUCTURE OVER C/L TRACK WHERE VERTICAL CLEARANCE IS LESS THAN REQUIRED. LETTERED AND MOUNTED AS SHOWN IN EXAMPLE 1.

NO. 44A - "NO CLEARANCE"

PLACE NO CLEARANCE SIGN ON BUILDING STRUCTURE OR POST WHERE HORIZONTAL CLEARANCE IS LESS THAN REQUIRED. LETTERED AND MOUNTED AS SHOWN IN EXAMPLE 2.

NOTES:

1. THE SIGNS LISTED IN THIS PLAN ARE 10" X 24" AND 4" X 42" SIZED WITH WHITE BACKGROUND AND BLACK LETTERS, ONE SIDE ONLY, AS SHOWN IN EXAMPLES 1 AND 2.
2. SEE PLAN 3000.01 FOR ADDITIONAL SPECIFICATIONS AND INFORMATION CONCERNING THE REFLECTIVE AND PANEL MATERIAL.
3. FOR USE IN THE STATE OF MINNESOTA AS ORDERED BY THE PUB. SERV. COMM. AT POINTS WHERE CLEARANCE IS LESS THAN THE LEGAL REQUIREMENT.



BILL OF MATERIALS

| QUANTITY | SIGN PANEL   |
|----------|--|
| 1 EA.    | SIGN NO. 44-NO CLEARANCE ITEM NO. 047220983  |
| 1 EA.    | SIGN NO. 44A-NO CLEARANCE ITEM NO. 047220984   |
|          | OPTIONAL HARDWARE  |
| 1 EA.    | 2 LB. PER LIN. FT. GALVANIZED FLANGED CHANNEL STEEL POST, 8'-0" LONG WITH 3/8"Ø MONTING HOLES, 1" CENTERS, WITH POINTED END. |
| 2 EA.    | 5/16" DIA. X 2" GALVANIZED ROUND HEAD SQUARE NECK MACHINE BOLT, ALL THREAD, WITH LOCK NUT AND WASHER.                        |

|   |              |
|---|--------------|
| BURLINGTON NORTHERN<br>SANTA FE<br>STANDARD PLAN<br>ENGINEERING DEPT., FORT WORTH, TEXAS  |              |
| CLEARANCE<br>SIGNS  |              |
| RAIL:   |              |
| DATE: 06/10/96  | SCALE:       |
| DWG. NO. 3044   | SHEET NO. 01 |
|   | REV. NO. 04  |
| USE OF THIS DRAWING IS LIMITED TO BURLINGTON NORTHERN SANTA FE AND THE PARTY ORDERING WITHOUT THE WRITTEN CONSENT OF BURLINGTON NORTHERN SANTA FE |              |