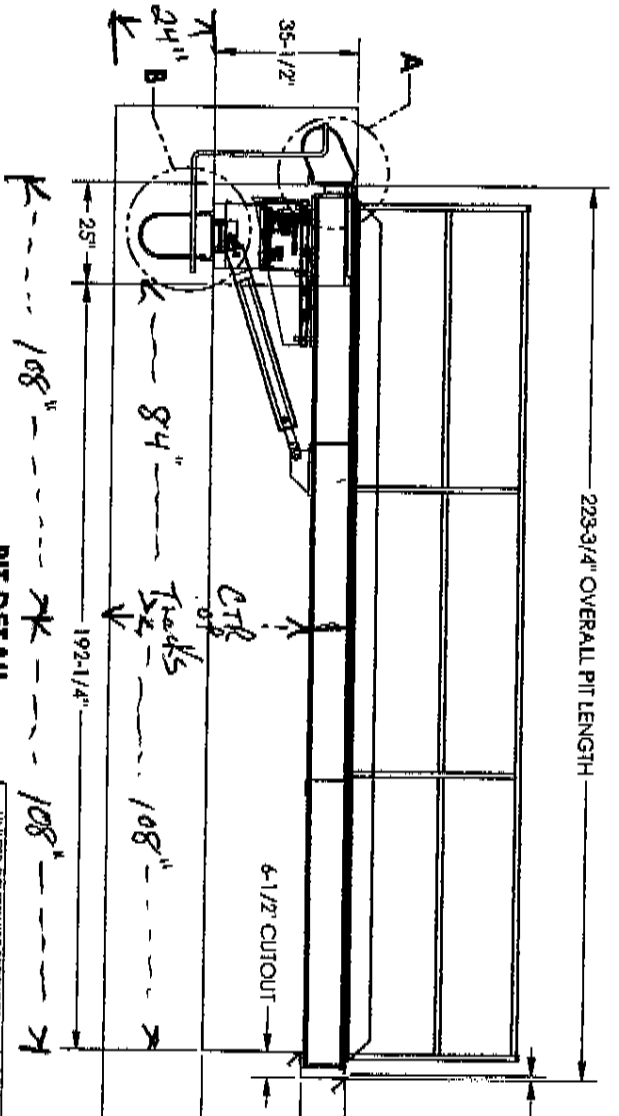
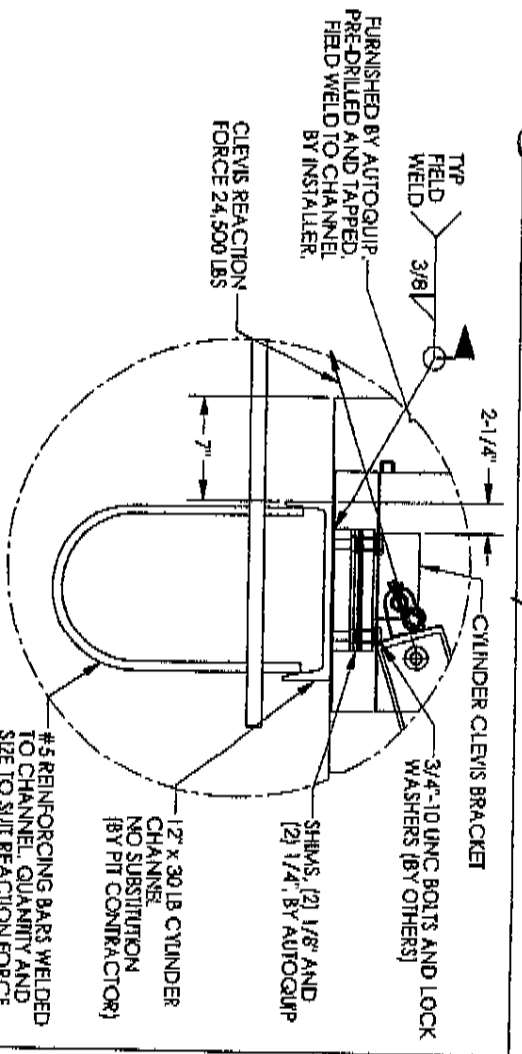
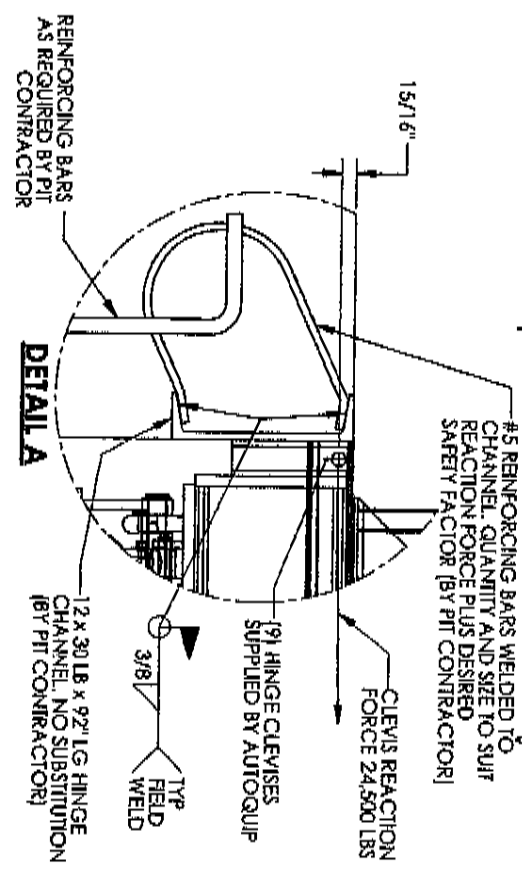


95BB-28301-1 3 OF 4

*Americold To Simplex Rail Bridge*

*ch/HS*



**PIT DETAIL**

UNLESS OTHERWISE SPECIFIED:

TOLERANCES	ALL DIMENSIONS ARE IN INCHES
FRACTIONS:	+/- 1/4

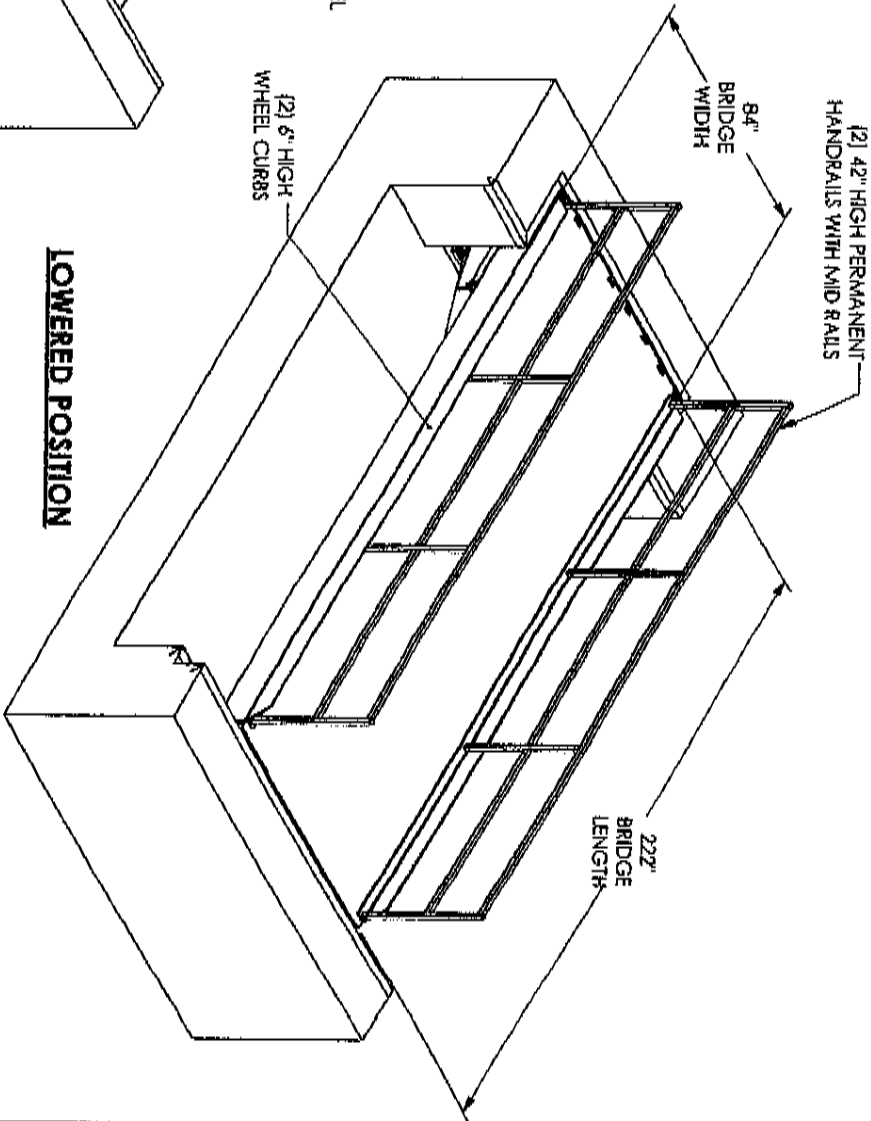
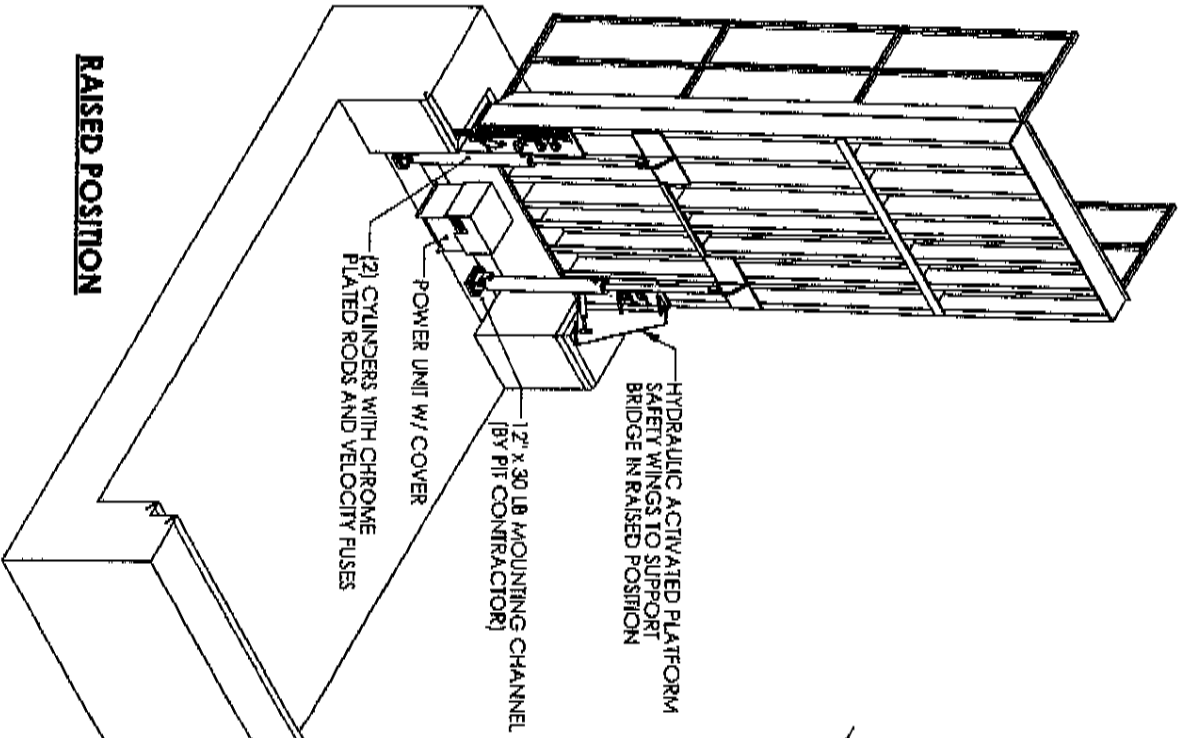
PROJECT NO: 358-96216-300	SCALE: AS SHOWN
DATE: 03/18/15	REV: 3 OF 4
PROJECT: BASCULE BRIDGE	DWG NO: 95BB-28301-1
DATE: 03/18/15	REV: 3 OF 4
PROJECT: BASCULE BRIDGE	DWG NO: 95BB-28301-1

*Simplex Side*

*59 1/2" = Top of Rail to Top of Bridge*

*Americold Side*

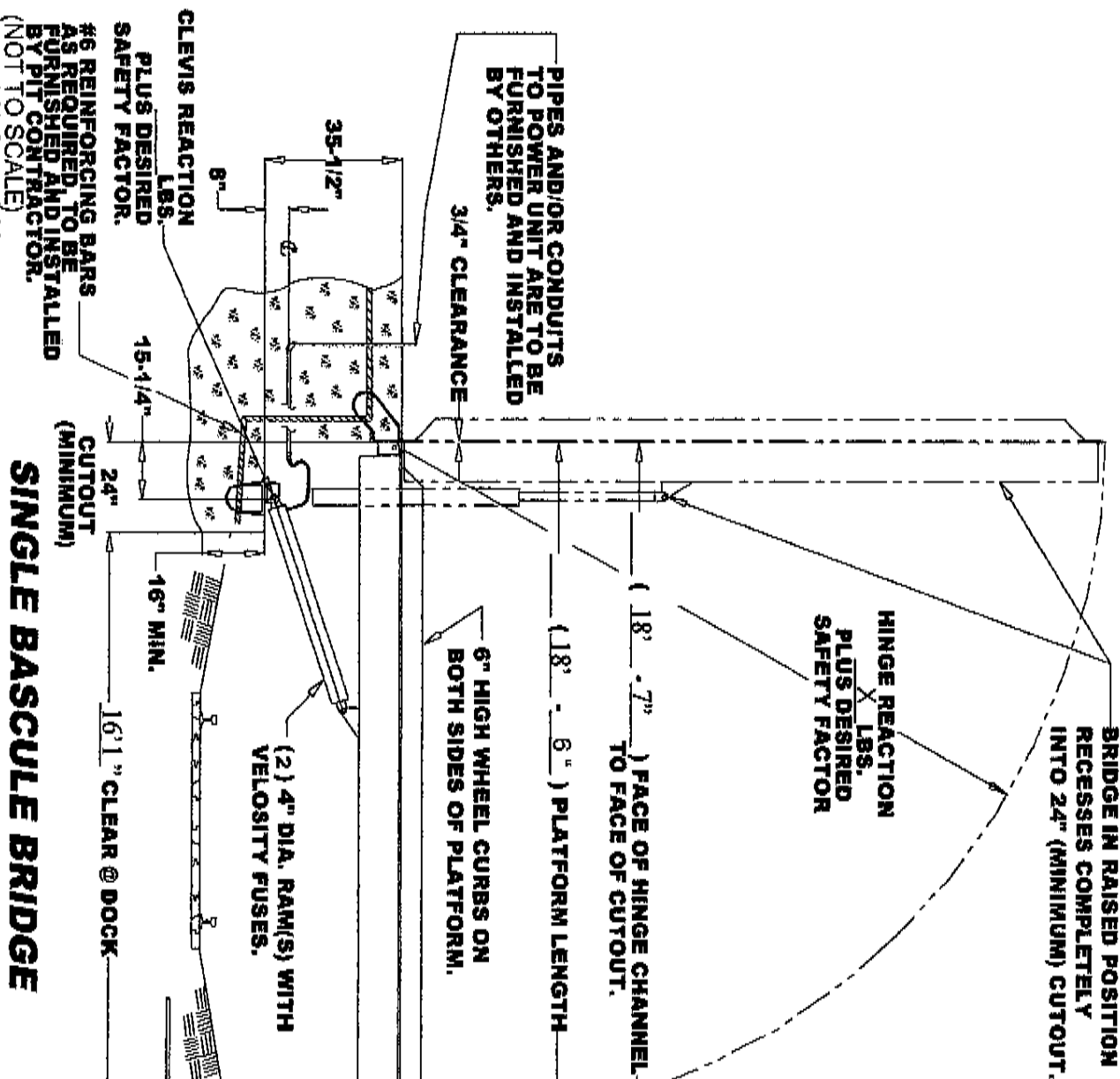




UNLESS OTHERWISE SPECIFIED:				<b>Autoquip</b> AMERICOLD		FOR VALUE 127979	
TOLERANCES				8500 LBS.		03/18/15	
ALL DIMENSIONS ARE IN INCHES		ALL RIGHTS RESERVED. ALL DIMENSIONS ARE IN INCHES		8.500 LBS.		1 OF 4	
FRACTIONS: +/- 1/4		ALL RIGHTS RESERVED. ALL DIMENSIONS ARE IN INCHES		8.500 LBS.		B	
		ALL RIGHTS RESERVED. ALL DIMENSIONS ARE IN INCHES		8.500 LBS.		9SBB-28301-1	

15'6" = 930"

826-0076-0



PIPES AND/OR CONDUITS TO POWER UNIT ARE TO BE FURNISHED AND INSTALLED BY OTHERS.

3/4" CLEARANCE

8"

35'-1 1/2"

15'-1 1/4"

24" CUTOUT (MINIMUM)

16" MIN.

16'1" CLEAR @ DOCK

10.375

6" CUTOUT

1" CLEARANCE

6" HIGH WHEEL CURBS ON BOTH SIDES OF PLATFORM.

(18' - 7") FACE OF HINGE CHANNEL TO FACE OF CUTOUT.

(18' - 6") PLATFORM LENGTH

HINGE REACTION X LBS. PLUS DESIRED SAFETY FACTOR

BRIDGE IN RAISED POSITION RECESSES COMPLETELY INTO 24" (MINIMUM) CUTOUT.

CLEVIS REACTION LBS. PLUS DESIRED SAFETY FACTOR.

#6 REINFORCING BARS AS REQUIRED, TO BE FURNISHED AND INSTALLED BY PIT CONTRACTOR. (NOT TO SCALE)

PROPOSAL DRAWING

QUOTE NO. \_\_\_\_\_

826-0076-0

**SINGLE BASCULE BRIDGE**

MAX CAPACITY:	25,000lb
AXLE WEIGHT	24,000
PLATFORM WIDTH:	84
PLATFORM LENGTH:	222

POWER UNIT, CONTROLS, AND ACCESSORIES PER QUOTATION.

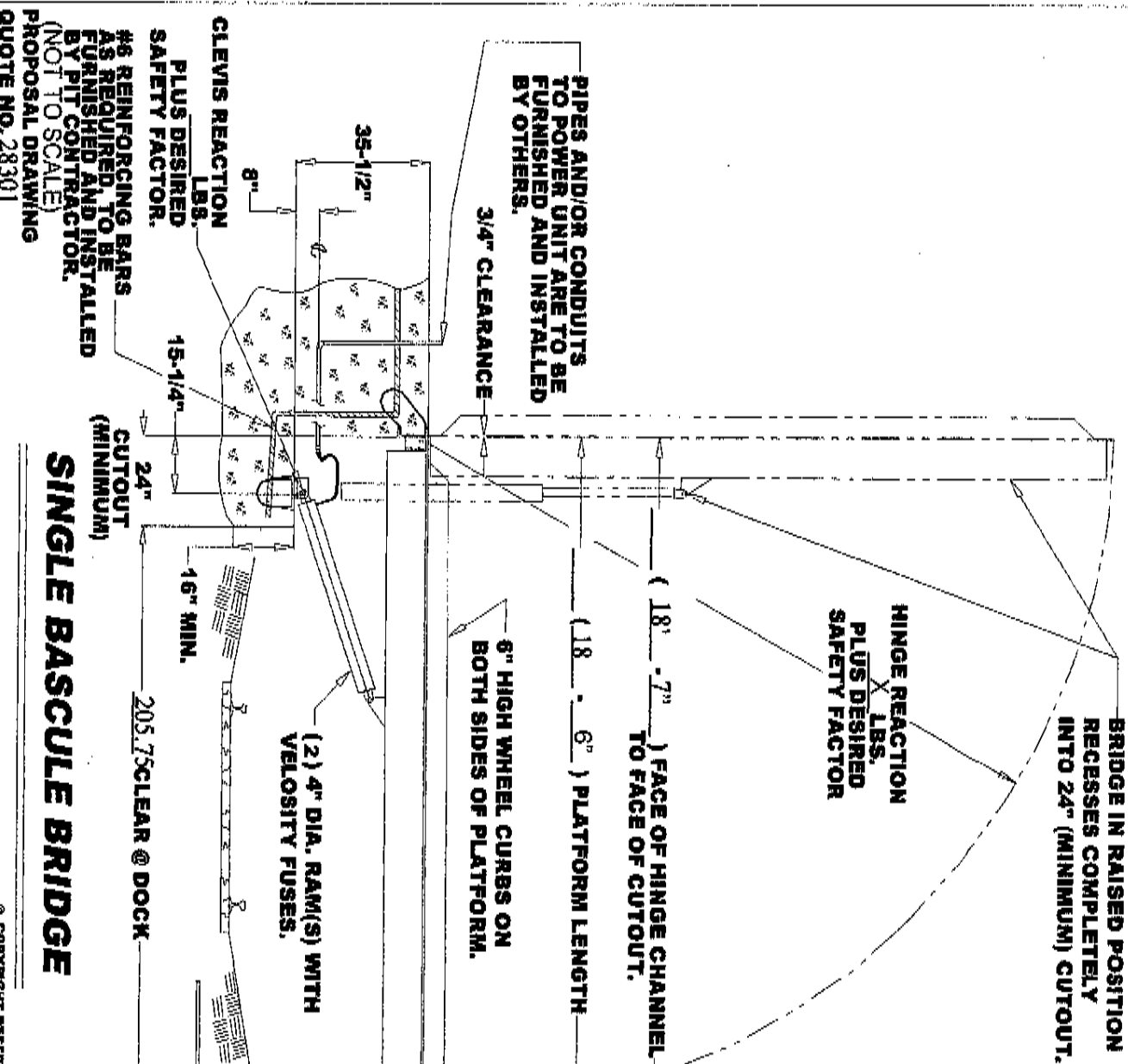
RUN (4) 3/4" CONDUIT UNDER TRACKS OR OVER-HEAD BETWEEN PUSH-BUTTON STATIONS ON EACH END OF BRIDGE. BY OTHERS.

REV. 1 3-12-02

© COPYRIGHT RESERVED  
 AUTOQUIP CORPORATION  
 2002

**Autoquip**  
 AUTOQUIP CORP.  
 1058 W. INDUSTRIAL AVE.  
 GUTHRIE, OK 73044-1058  
 888-814-9876 WWW.AUTOQUIP.COM

826-0076-0



**SINGLE BASCULE BRIDGE**

MAX CAPACITY:	25000 lbs
AXLE WEIGHT	24000lbs
PLATFORM WIDTH:	7 FEET (84)
PLATFORM LENGTH:	18' 6" (222)

POWER UNIT, CONTROLS, AND ACCESSORIES PER QUOTATION.

RUN (1) 3/4" CONDUIT UNDER TRACKS OR OVER-HEAD BETWEEN PUSH-BUTTON STATIONS ON EACH END OF BRIDGE. BY OTHERS.

826-0076-0

REV. 1 3-12-02

© COPYRIGHT RESERVED  
AUTOQUIP CORPORATION  
2002



AUTOQUIP CORP.  
1056 W. INDUSTRIAL AVE.  
GUTHRIE, OK 73044-1056  
888-811-9876 WWW.AUTOQUIP.COM

# SPECIFICATIONS

MODEL:	SBB-96216-300
CAPACITIES:	25,000 LBS MAX LIFTING 20,000 LBS MAX AXLE LOAD (SEE NOTE #7)
PLATFORM:	84"W x 222"L 4-WAY STEEL
LOWERED HEIGHT:	35 1/2"
TRAVEL:	90 DEGREES
SPEED:	90 SECONDS UP 90 SECONDS DOWN
POWER UNIT:	SHIP - REMOTE
PRIMARY VOLTAGE:	460VAC / 3PH / 60HZ
CONTROL VOLTAGE:	24VDC
CONTROL PANEL:	NEMA-1 - SHIPPED LOOSE
CONTROL SIGNAL:	(2) PRESS AND HOLD UP/DOWN WALL MOUNTED PUSH-BUTTONS (20FT CORD) (NEMA-4) SHIPPED LOOSE

## ATTENTION

THE PURPOSE OF THIS DRAWING IS TO PROVIDE NECESSARY INFORMATION ABOUT THE EQUIPMENT SO THAT THE ARCHITECT OR INSTALLER CAN MAKE A FINAL CONSTRUCTION DRAWING FOR THE SPECIFIC JOB SITE. INSTALLATION DETAILS SUCH AS CONCRETE THICKNESS, REINFORCING, PILING DIRECTION, CONDUIT SIZE, POWER UNIT LOCATION, ADJACENT STRUCTURES, ETC CANNOT ECONOMICALLY BE INCORPORATED IN THE MANUFACTURER'S DRAWINGS.

APPROVAL OF THIS DRAWING IS AN APPROVAL OF THE EQUIPMENT ONLY. ANY REQUIRED CHANGES SHOULD ONLY INCLUDE ITEMS PERTINENT TO THE EQUIPMENT ITSELF.

## CANCELLATION POLICY

THIS AUTOQUIP PRODUCT IS DESIGNED AND FABRICATED TO THE ORDER. THIS IS NOT A STANDARD PRODUCTION MODEL THAT CAN BE PLACED IN STOCK FOR FUTURE SALE.

### CANCELLATION CHARGES

10% - AFTER APPROVAL DRAWING HAS BEEN CREATED BUT BEFORE PURCHASE OF MATERIAL  
80% - AFTER PURCHASE OF MATERIALS AND WITHIN 12 WEEKS OF SCHEDULED SHIP DATE

## NOTES:

1. ALL AXLES AND PIVOT POINTS ARE EQUIPPED WITH LIFE TIME LUBRICATED BEARINGS.
2. LIFT TO BE PAINTED WITH A.Q. BROWN ENAMEL.
3. USE SAE SW30 OIL - (10) GALLONS APPROX. (BY AUTOQUIP)
4. REMOTE HORIZONTAL POWER UNIT WITH WEATHER PROOF COVER. APPROXIMATE SIZE: 18" x 18" x 23". NO MORE THAN 12 FEET ABOVE LIFT. RECOMMENDED MOUNTING RESTRICTIONS ARE AS FOLLOWS:  
NO MORE THAN 20 FEET FROM LIFT.
5. CYLINDER CLEVIS SHIMS MAY BE USED TO ADJUST THE PLATFORM ANGLE IN RAISED POSITION. SEE BASCULE BRIDGE INSTALLATION PROCEDURE PROVIDED AT TIME OF DELIVERY.
6. SHIM PLATFORM (BY OTHERS) TO LEVEL PLATFORM TO DOCK HEIGHT.
7. 20,000 LBS. MAX. AXLE LOAD - A VEHICLE SPEED OF 3MPH MAXIMUM AND ONE VEHICLE AT A TIME ON BRIDGE.
8. INSTALLATION PACKAGE TO INCLUDE: (10) GALLONS OF SW30 OIL AND 1/2" x 20 FT. LONG CONNECTING HOSE SHIPPED LOOSE.

## APPROVAL DRAWING

THIS DRAWING IS FOR YOUR APPROVAL. PLEASE CHECK AND RETURN ONE SIGNED COPY IMMEDIATELY. THE FINAL DESIGN WILL NOT PROCEED UNTIL APPROVAL DRAWINGS RECEIVED BY AUTOQUIP.

- APPROVED WITH NO CHANGES
- REVISE AND RESUBMIT

FROM \_\_\_\_\_ DATE \_\_\_\_\_

BY \_\_\_\_\_ DATE \_\_\_\_\_

UNLESS OTHERWISE SPECIFIED:				127979	
TOLERANCES		Autoquip AMERICOLD		SBB-96216-300, BASCULE BRIDGE	
ALL DIMENSIONS ARE IN INCHES		5 COPY/RIGHT AUTOQUIP		REVISED DATE	
ALL RIGHTS RESERVED.		5,500 LBS.		JP	
FRACIONS: +/- 1/4		G.V.		03/18/15	
		4 OF 4		B	
		958B-28301-1			

BEFORE THE WASHINGTON UTILITIES AND TRANSPORTATION COMMISSION

In Re Application (R. C. 82 ) of )  
 )  
 Terminal Ice & Cold Storage Co. )  
 1618 S. W. 1st Avenue )  
 Portland, Oregon )  
 )  
 For exemption under the Clearance Rules )  
 and Regulations Governing Common Carrier )  
 Railroads adopted by Commission order in )  
 Cause No. T-8499 issued effective Decem- )  
 ber 1, 1950, and reissued effective June )  
 1, 1957, under authority of RCW 81.44.010 )  
 (RRS 10400), and further amended by )  
 General Order R-2 (Cause T-76) issued )  
 effective March 31, 1969. )

ORDER R. C. NO. 82  
 GRANTING APPLICATION

The person or firm above named has made application for exemption under the railroad clearance rules governing common carrier railroads operating in the State of Washington pursuant to the provisions for rule exemptions and the servicing railroad company has indicated it has no objection and the Commission being fully advised is of the opinion that the waiver should be granted.

Note: This applies to a portable fork lift truck bridge proposed to span a railroad spur serving a processing and cold storage plant located near Wheeler, Washington. The bridge will cause an intermittent impairment to railroad clearances.

ORDER

WHEREFORE, IT IS ORDERED That the application herein be and the same is hereby granted under the following conditions:

1. Two signal lights be installed on the east end of the canopy, which is approximately 370' in advance of the portable bridge location. The lights to be located one on either side of the track centerline and wired in a manner that they will show a green indication to proceed only when the bridge is removed.
2. The bridge when removed shall be stored not closer than 8'-6" from the centerline of the track.
3. Standard "No Clearance" signs shall be installed not less than 10' from the centerline of the track and approximately 100' east from the east end of the canopy.
4. The impaired area shall be illuminated when switching may occur during hours of darkness.

*Agreed to  
 Craig Clark  
 Arbon Eq.  
 [Signature]*

DATED at Olympia, Washington, and effective JUL 28 1970.

WASHINGTON UTILITIES AND TRANSPORTATION COMMISSION

*Robert D. Timm*  
 ROBERT D. TIMM, Chairman

*Francis Pearson*  
 FRANCIS PEARSON, Commissioner

*Dayton A. Witten*  
 DAYTON A. WITTEN, Commissioner



RE: FW: Americold - Private Crossing- Contractor's Right of Entry

Kim Yeager

to:

Craig Claire

06/15/2015 11:21 AM

Cc:

"cliff.elliott@americoldrealty.com", "scott.nolan@americoldrealty.com"

Hide Details

From: Kim Yeager <kyeager@ihdlc.com>

To: Craig Claire <CClaire@ritchite.com>,

Cc: "cliff.elliott@americoldrealty.com" <cliff.elliott@americoldrealty.com>,

"scott.nolan@americoldrealty.com" <scott.nolan@americoldrealty.com>

Craig,

Just to confirm, you've asked WUTC for the 7'9" clearance variance, as per your current plans, correct?

If so, then YES, CBRR would approve this variance/clearance exemption with WUTC approval, along with the outlined requirements and that this variance is not a waiver of covenants and/or waiver of indemnification as per the Crossing Agreement.

-Kim

Kim Yeager

Real Estate Manager/Designated Broker

## Iron Horse Real Estate

Railroad Property Management & Land Management

CBRR/CWA/BNSF

111 University Parkway | Suite 200 | Yakima, WA 98901 |

| P 509.834.2533 | | C 509.388.6602 | | F 509.453.9349 |

kyeager@ihdlc.com

---

**From:** Craig Claire [<mailto:CClaire@ritchite.com>]

**Sent:** Monday, June 15, 2015 11:12 AM

**To:** Kim Yeager

**Cc:** cliff.elliott@americoldrealty.com; scott.nolan@americoldrealty.com

**Subject:** RE: FW: Americold - Private Crossing- Contractor's Right of Entry

Kim,

We are going through the Variance procedure with WUTC for the clearance exemption.

WUTC wants to know if the variance is approved by them, if you support us proceeding with this project. All requirements that you have laid out will be met.

Please let me know as soon as you can so we can have the information they require completed for their reviewed prior to their meeting of June 25.

Thank you