

Exhibit No. ___ (MC-4)
Docket TG-140560
Witness: Melissa Cheesman

BEFORE THE WASHINGTON UTILITIES AND TRANSPORTATION COMMISSION

**WASHINGTON UTILITIES AND
TRANSPORTATION COMMISSION,**

Complainant,

v.

WASTE CONTROL, INC.,

Respondent.

DOCKET TG-140560

**EXHIBIT TO
TESTIMONY OF**

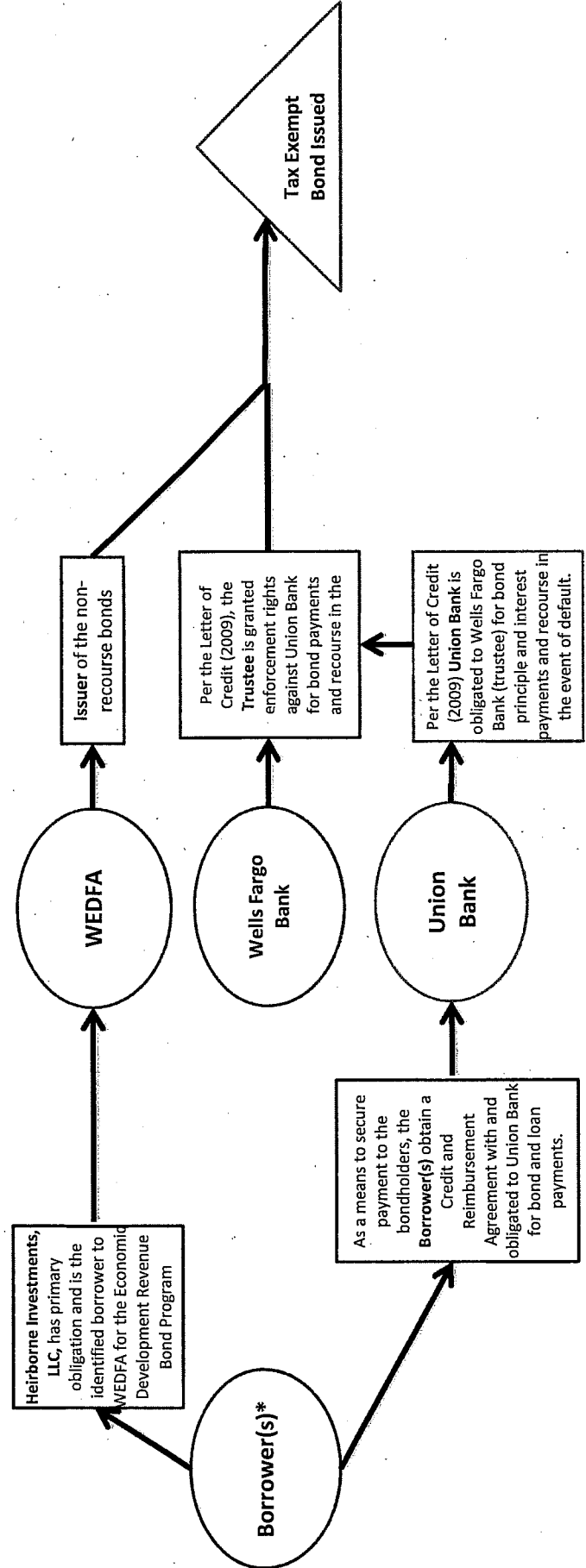
Melissa Cheesman

**STAFF OF WASHINGTON UTILITIES AND
TRANSPORTATION COMMISSION**

Bond Relationships

July 18, 2014

Bond Relationships



* Borrower(s) mean - Per the 2006 Application with WEDFA, the named applicants are Waste Control Recycling, Inc. and/or its affiliates. Per the 2006 Bond Resolution issued by WEDFA, the borrower is Heirborne Investments, LLC. Per the Credit and Reimbursement agreement with Union Bank, the borrowers are Waste Control, Inc., Waste Control Equipment, Inc., Waste Control Recycling, Inc., West Coast Paper Fibers, Inc., and Heirborne Investment, LLC.