



# 2010 Qualifying Storm Events

November 15, 2010

## Table of Contents

<b>Table of Contents .....</b>	<b>2</b>
<b>Event Description .....</b>	<b>3</b>
<b>Date of event .....</b>	<b>3</b>
<b>Event Type .....</b>	<b>3</b>
<b>Service Areas Affected .....</b>	<b>3</b>
<b>Number of Customers Affected.....</b>	<b>3</b>
<b>Summary of System Impacts .....</b>	<b>3</b>
<b>Mobilization Summary .....</b>	<b>3</b>
<b>Major Event Day – Qualification.....</b>	<b>5</b>
<b>Qualified Events - 2010 .....</b>	<b>5</b>
<b>Current Event – Calculation Detail .....</b>	<b>5</b>
<b>Cumulative list of events that have qualified .....</b>	<b>5</b>
<b>Event Restoration – Cost Summary .....</b>	<b>6</b>
<b>Restoration Cost Detail by Qualifying Event.....</b>	<b>6</b>
<b>YTD Storm Restoration Cost Detail – Through November 15, 2010 .....</b>	<b>6</b>
<b>Detail Documents .....</b>	<b>7</b>
<b>Restoration Cost Detail – Current Event .....</b>	<b>8</b>
<b>IEEE-1366 - Detailed List of Distribution Circuits with Outages.....</b>	<b>9</b>
<b>Terms, Codes and Definitions Used on Detail Reports.....</b>	<b>16</b>
<b>Media Coverage .....</b>	<b>18</b>

## Event Description

### Date of event

November 15, 2010

### Event Type

Wind storm.

### Service Areas Affected

This wind event impacted all parts of PSE's electric service area - Whatcom, Skagit, Island, King, Pierce, Thurston, Kitsap, Jefferson and Kittitas Counties.

### Number of Customers Affected

Approximately 184,280 customers were without power over the course of this outage event.

### Summary of System Impacts

<b>Total Number of Outages</b>	<b>937</b>
Distribution Circuits Totally Out	54
Distribution Circuits Partially Out	883

Transmission Circuits Affected	24
Substations Totally Off-line	10

### Mobilization Summary

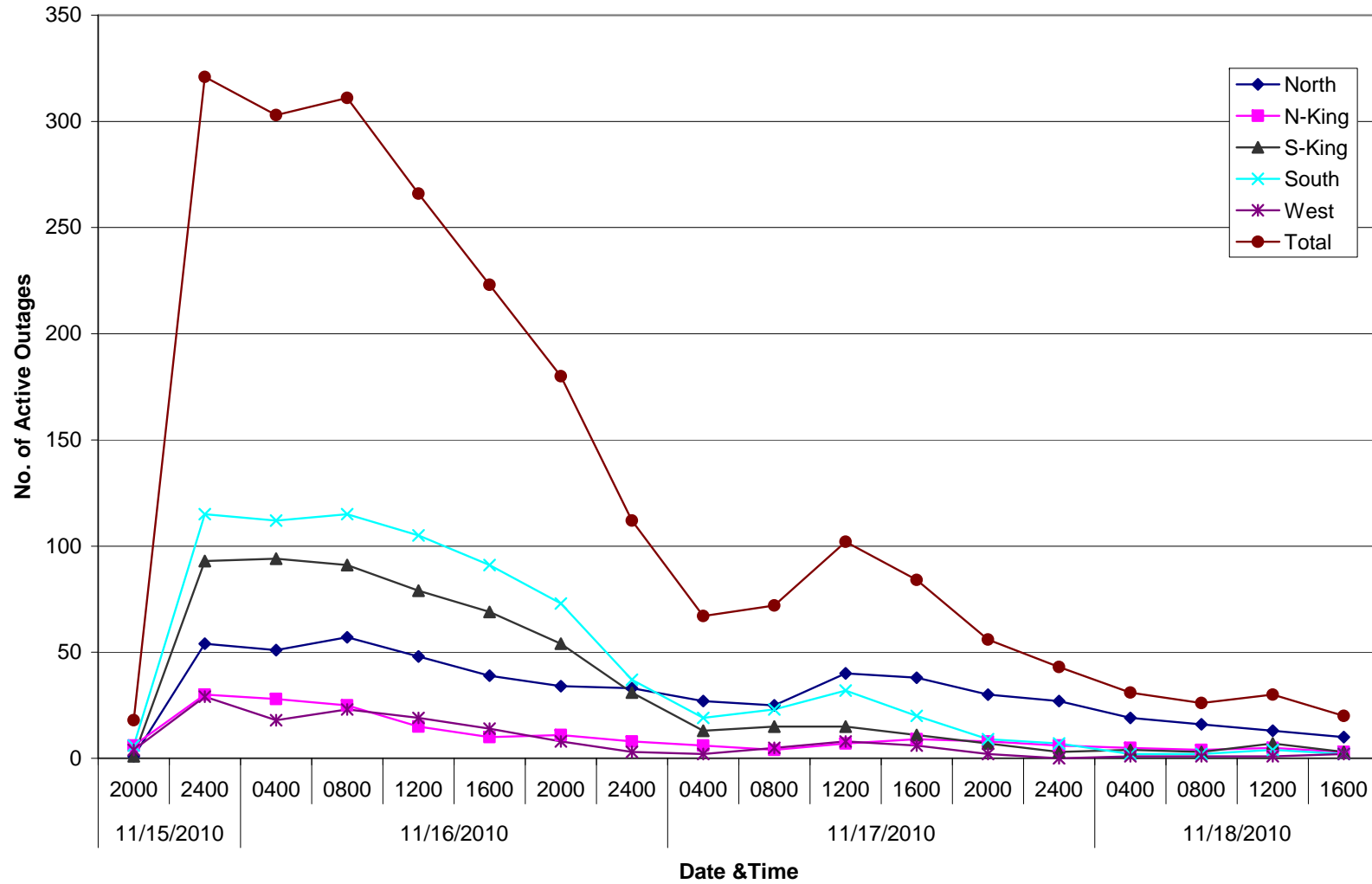
#### Operating Bases

Base	Date Opened	Time Opened	Date Closed	Time Closed
Skagit	11/15/2010	21:00	11/18/2010	17:15
Island	11/15/2010	22:45	11/18/2010	17:15
Whatcom	11/15/2010	22:45	11/18/2010	17:15
North King	11/15/2010	22:45	11/16/2010	21:00
South King	11/15/2010	22:30	11/17/2010	18:15
Pierce	11/15/2010	22:45	11/17/2010	02:00
Thurston	11/15/2010	21:30	11/17/2010	22:15
Jefferson	11/15/2010	22:45	11/16/2010	21:30
Vashon	11/15/2010	22:45	11/16/2010	21:30
Kittitas	11/15/2010	22:45	11/16/2010	21:00
Kitsap	11/15/2010	21:45	11/16/2010	21:30

#### Emergency Operations Center

EOC	Date Opened	Time Opened	Date Closed	Time Closed
	11/15/2010	22:30	11/17/2010	08:00

Outage Events - Nov. 15, 2010 to Nov. 18, 2010



## Major Event Day – Qualification

### IEEE 1366 Method

IEEE 1366 was established to present a set of terms and definitions which can be used to foster uniformity in the development of distribution service reliability indices, to identify factors which affect the indices, and to aid in consistent reporting practices among utilities. Also, it provides guidance for new personnel in the reliability area, and tools for internal as well as external comparisons. The Major Event Day definition was created as part of IEEE 1366 to allow for consistent calculation of reliability metrics between utilities, and enable more valid comparisons with other utility reliability metrics.

#### IEEE Major Event Day Calculation (2.5 BETA METHOD)

1. A threshold on daily SAIDI is computed once a year, following year end.
2. Assemble the 5 most recent years of historical values of SAIDI/day.
3. Discard any days in the data set that has a SAIDI/day of zero.
4. Find the natural logarithm of each value in the data set.
5. Compute the average Alpha and the standard deviation (Beta) of the natural logarithms computed in step 3.
6. Compute the threshold Tmed where  $Tmed = \exp(\text{Alpha} + 2.5 * \text{Beta})$
7. Any day in the next year with SAIDI > Tmed is a major event day.

**Puget Sound Energy's Major Event Threshold for 2010: 7.21 Minutes**

## Qualified Events - 2010

### Current Event – Calculation Detail

Event Date	Total Customer Minutes	Average Customer Count	Daily SAIDI – Customer Minutes /Customer Count
11/15/2010	109,761,336	1,084,774	101.18

### Cumulative list of events that have qualified

Date(s)	T-med Score	O&M – Deferrable Accumulation
01/17/2010	29.25	\$862,417
03/16/2010	10.61	\$481,430
05/03/2010	13.55	\$721,305
11/15/2010	101.18	\$6,134,570

## Event Restoration – Cost Summary

### Restoration Cost Detail by Qualifying Event

Date	Qualified Events Deferred Account	Capital	C&D Costs Recoverable from Direct Billings (Costs Not Yet Billed)	O&M – Not Deferrable	O&M – Deferrable Accumulation	Total O&M	Total
01/17/2010	\$0	\$50,785	\$0	\$79,959	\$862,417	\$942,376	\$993,161
03/16/2010	\$0	\$110,581	\$0	\$43,339	\$481,430	\$524,769	\$635,349
05/03/2010	\$0	\$154,017	\$0	\$44,568	\$721,305	\$765,872	\$919,889
11/15/2010	\$0	\$575,432	\$0	\$246,663	\$5,312,476	\$5,559,139	\$6,134,570

### YTD Storm Restoration Cost Detail – Through November 15, 2010

Qualified Events Deferred Account	Capital	C&D Costs Recoverable from Direct Billings (Costs Not Yet Billed)	O&M – Not Deferrable	O&M Deferrable Accumulation	Total O&M	Total
\$0	\$890,814	\$0	\$414,528	\$7,377,628	\$7,792,156	\$8,682,969

Qualifying Storm Event  
November 15, 2010

## Detail Documents

**Restoration Cost Detail – Current Event**

**Detailed List of Distribution Circuits with Outages**

**Terms, Codes & Definitions Used on Detail Reports**

**Newsprint Media Coverage**

**Restoration Cost Detail – Current Event**

<b>Puget Sound Energy November 15, 2010 Storm Damage Repair Costs</b>							
	Qualifying Events Deferred Account	Capital	C&D Recoverable from Direct Billings (Costs Not Yet Billed)	O&M - Not Deferrable	O&M - Deferrable Accumulation	Total O&M	Total
Labor							
ST		\$ 2,016		\$ 97,950	\$ 34,731	\$ 132,681	\$ 134,697
OT		\$ 478			\$ 489,418	\$ 489,418	\$ 489,896
Total Labor	\$ -	\$ 2,494	\$ -	\$ 97,950	\$ 524,149	\$ 622,099	\$ 624,593
Labor OH		\$ 1,681		\$ 73,073	\$ 227,889	\$ 300,962	\$ 302,643
Materials		\$ 101,659		\$ 30,467	\$ 254,468	\$ 284,935	\$ 386,594
Contractors Other Direct Charges		\$ 375,791		\$ 8,971	\$ 4,224,182	\$ 4,233,153	\$ 4,608,943
Fleet		\$ 1,544			\$ 43,173	\$ 43,173	\$ 44,717
		\$ 260			\$ 37,824	\$ 37,824	\$ 38,084
Other Assessments		\$ 92,002		\$ 36,203	\$ 791	\$ 36,994	\$ 128,996
Deferred Expenses						\$ -	\$ -
	\$ -	\$ 575,432	\$ -	\$ 246,663	\$ 5,312,476	\$ 5,559,139	\$ 6,134,570



Qualifying Storm Event  
November 15, 2010

**IEEE-1366 - Detailed List of Distribution Circuits with Outages**

NUMBER	DATE	TIME	CKT	MPG	CAZ	EQT	CUST OUT	CUST MIN
E769081986	11/15/2010	5:52:03 AM	CRE-12	EAD	EF	OTF	4	181
E737833065	11/15/2010	6:08:33 AM	PCR-14	EBE	EF	UPC	1	500
E398284790	11/15/2010	7:23:43 AM	GRI-16	ECC	EF	OTF	3	241
E787732781	11/15/2010	7:40:46 AM	PLG-13	ECC	EF	USV	1	105
E929746333	11/15/2010	8:06:27 AM	PMA-12	ECE	EF	UPC	5	2061
E547670060	11/15/2010	8:32:15 AM	UHL-25	EBD	PO	USV	1	487
E791011488	11/15/2010	9:08:12 AM	SKE-26	ECE	EF	UTC	1	68
E541200266	11/15/2010	9:25:00 AM	SNQ-13	EBF	TV	OCR	3158	4E+06
E588363508	11/15/2010	9:26:27 AM	EGT-28	EBE	CR	UPC	1	89
E566561541	11/15/2010	10:50:24 AM	BRE-21	ECD	EF	OTR	220	22968
E457063494	11/15/2010	11:30:58 AM	CLV-16	EAD	TO	OFU	1449	59457
E803571333	11/15/2010	11:38:28 AM	SEM-15	EAA	TV	OFU	1	67
E118115653	11/15/2010	11:51:28 AM	FCR-12	EBI	TF	OCO	1385	39519
E110093818	11/15/2010	12:57:48 PM	GLA-12	EAA	EF	OTF	1	115
E755031614	11/15/2010	1:17:59 PM	BHL-15	ECE	EF	OTF	1	46
10982993	11/15/2010	1:18:00 PM	BRE-14	ECD	EF	OCO	1	153
E071701053	11/15/2010	1:36:22 PM	FNW-16	ECD	TV	OCO	119	32876
E050180943	11/15/2010	1:39:41 PM	SNQ-15	EBF	EF	OTF	5	492
E523711498	11/15/2010	1:50:00 PM	GWR-16	EBI	TV	OCO	75	331500
E745993578	11/15/2010	1:50:00 PM	TLN-0157	EBI	TF	OCO	799	95081
E141650983	11/15/2010	2:11:24 PM	VIS-26	EAA	TV	OSV	1	70
E389786902	11/15/2010	2:15:34 PM	FRA-12	ECD	TV	OFU	15	2482
E819636739	11/15/2010	2:16:55 PM	VAS-12	EBL	UN	OCO	1696	271501
E809471803	11/15/2010	2:35:30 PM	NHL-15	EBD	EF	USV	1	155
E983095243	11/15/2010	2:39:24 PM	FRA-13	ECD	TV	OCO	23	2728
E259615257	11/15/2010	2:42:36 PM	SEQ-22	EBJ	TV	OFU	2	149
E030871078	11/15/2010	2:46:29 PM	ORT-22	ECA	EF	OTF	1	151
E482589099	11/15/2010	2:55:32 PM	EPO-15	ECD	TV	CDH	34	15217
E827278777	11/15/2010	3:17:06 PM	SHD-18	EBJ	TV	OCO	1	320
E690520744	11/15/2010	3:18:13 PM	HOB-15	EBI	BA	OTF	2	172
E465500954	11/15/2010	3:32:52 PM	PIK-21	EBF	TV	OCO	559	88224
E103128315	11/15/2010	3:35:57 PM	PMA-16	ECE	TV	OFU	10	2912
E046365166	11/15/2010	3:48:06 PM	SPI-17	EBD	TV	OCO	63	19650
E789014167	11/15/2010	3:56:38 PM	PMA-12	ECE	TF	OFU	889	90485
E998918728	11/15/2010	3:57:05 PM	MAN-13	ECD	TV	OCO	1135	102358
10982994	11/15/2010	4:00:00 PM	SKE-23	ECE	EF	USV	1	316
E093010548	11/15/2010	4:05:44 PM	SNQ-15	EBF	TV	OSV	1	276
E692358618	11/15/2010	4:12:33 PM	FAL-13	EBF	TV	OCO	31	4698
E135736027	11/15/2010	4:16:35 PM	BRO-16	EAD	EF	OTF	1	73
E642227677	11/15/2010	4:25:16 PM	MIR-13	EBF	TV	OCO	4	4219
E411564558	11/15/2010	4:41:58 PM	WIS-13	EBF	TV	OCO	1	903
E239202474	11/15/2010	4:46:46 PM	OVE-15	EBE	TV	UTC	10	4912
E699368026	11/15/2010	4:52:50 PM	MWD-15	EBE	TV	OCO	7	2150
E186794738	11/15/2010	4:54:09 PM	SBE-26	EBE	TV	OCO	96	71122
E742746222	11/15/2010	4:55:46 PM	NBE-12	EBF	TV	OCO	17	2112
E372258146	11/15/2010	5:00:49 PM	EGT-16	EBE	TV	OCO	12	3950

Qualifying Storm Event  
November 15, 2010

NUMBER	DATE	TIME	CKT	MPG	CAZ	EQT	CUST OUT	CUST MIN
E075022511	11/15/2010	5:01:45 PM	NBE-13	EBF	TV	OTF	5	938
E307208947	11/15/2010	5:07:00 PM	CLY-23	EBE	TV	OCO	624	58198
E637871502	11/15/2010	5:30:25 PM	HEM-13	ECA	TV	OCO	738	54108
E752416517	11/15/2010	5:37:19 PM	VAS-23	EBL	TV	OFC	1	135
E771763892	11/15/2010	5:48:31 PM	MER-15	EBE	TV	OTF	6	1509
E835283380	11/15/2010	5:56:42 PM	TOL-17	EBD	TV	OTF	39	41820
E154490118	11/15/2010	6:01:35 PM	PMA-15	ECE	TV	UTC	10	813
E310553007	11/15/2010	6:10:16 PM	PAN-16	EBJ	TV	OCO	10	3253
E553237201	11/15/2010	6:24:49 PM	WIS-13	EBD	PO	UPT	1	966
E725467312	11/15/2010	6:40:09 PM	LOL-21	ECD	TV	OSV	3	3162
E032652542	11/15/2010	6:47:29 PM	FRA-12	ECD	TV	OCO	84	22471
E402546986	11/15/2010	6:49:38 PM	FRA-16	ECD	TV	OFU	33	4484
E327328163	11/15/2010	7:24:34 PM	WOL-25	ECC	EF	OFC	1	137
E736137928	11/15/2010	7:35:55 PM	SPA-16	ECA	EF	OFU	10	1149
E757994316	11/15/2010	7:37:15 PM	PRI-13	ECC	EF	OCO	2412	3E+06
E572610211	11/15/2010	7:51:21 PM	PMA-15	ECE	TV	OFU	6	1390
E923303421	11/15/2010	7:51:27 PM	PRI-23	ECC	EF	OTF	2	133
E297460271	11/15/2010	7:55:53 PM	ELD-27	ECC	TV	OCO	5	8141
E010452859	11/15/2010	7:57:04 PM	WIS-14	EBF	TV	OCO	145	95835
E001072535	11/15/2010	7:59:27 PM	ELD-23	ECC	TV	CDH	1026	938328
E081530929	11/15/2010	8:01:20 PM	ELD-25	ECC	TV	CDH	20	16913
E892090918	11/15/2010	8:03:54 PM	BRW-13	EAC	TV	OFU	177	145020
E879948835	11/15/2010	8:05:27 PM	GLA-12	EAA	TV	OCO	20	11831
E427908625	11/15/2010	8:06:03 PM	FRG-25	ECC	TV	OCR	175	263891
E874678143	11/15/2010	8:06:19 PM	HAP-16	EAA	TV	OFU	63	26062
E196456784	11/15/2010	8:08:34 PM	CHI-12	ECD	TV	OFU	4	452
E146454163	11/15/2010	8:09:18 PM	ALG-15	EAA	TV	OPO	57	47008
E474633039	11/15/2010	8:10:48 PM	MCK-15	EAA	TV	OTR	16	7859
E764812051	11/15/2010	8:12:35 PM	SUM-21	EAC	TV	OCO	26	20109
E858893489	11/15/2010	8:13:25 PM	WLS-16	EAC	TV	OCO	77	43918
E736003116	11/15/2010	8:14:03 PM	PLG-16	ECC	TV	CDH	865	1E+06
E182485836	11/15/2010	8:17:00 PM	BTN-36	EAC	UN	OCO	734	23488
E488991231	11/15/2010	8:17:00 PM	TLN-0049	ECF	TV	OCO	6627	2E+06
E425569097	11/15/2010	8:17:09 PM	CAP-15	ECC	TV	OSV	3	6237
E966465630	11/15/2010	8:20:46 PM	AVO-17	EBD	TV	OCO	14	3923
E801221719	11/15/2010	8:20:46 PM	CRE-15	EAD	TV	OCO	57	45841
E215760924	11/15/2010	8:23:00 PM	CPV-13	EAD	TV	OCO	567	253449
E708050567	11/15/2010	8:23:06 PM	ROC-25	ECC	TV	OCO	513	457545
E742493597	11/15/2010	8:23:33 PM	ALG-12	EAC	TV	OHR	67	30582
E976573201	11/15/2010	8:23:57 PM	CRE-16	EAD	TV	OCO	84	178168
E634094927	11/15/2010	8:25:45 PM	FRG-22	ECC	TV	OCO	329	277100
E723179423	11/15/2010	8:26:00 PM	FRG-24	ECC	TV	OCO	894	595404
E013998348	11/15/2010	8:30:50 PM	ETN-15	EBH	TV	OCO	378	103299
E490181069	11/15/2010	8:32:29 PM	BAR-13	ECC	TV	OFC	40	55421
E054765428	11/15/2010	8:35:00 PM	TLN-0153	ECC	TV	OPO	4347	4E+06
E098187585	11/15/2010	8:35:21 PM	YEL-27	ECC	TV	OCO	1253	2E+06
E340588275	11/15/2010	8:37:00 PM	VIS-25	EAA	TF	OCO	848	149248
E614448600	11/15/2010	8:39:54 PM	NOB-24	EBE	TV	OCO	8	7993

Qualifying Storm Event  
November 15, 2010

NUMBER	DATE	TIME	CKT	MPG	CAZ	EQT	CUST OUT	CUST MIN
E150873821	11/15/2010	8:41:00 PM	HLC-23	EAD	TV	OCO	1090	669260
E835825864	11/15/2010	8:42:13 PM	NLM-13	EAC	TV	OCO	20	18716
E624212344	11/15/2010	8:44:14 PM	DIS-13	ECF	TV	OCO	267	133438
E872148474	11/15/2010	8:44:44 PM	CPV-15	EAD	TV	OPO	150	324340
E844507442	11/15/2010	8:44:49 PM	DIS-12	ECF	TV	OCO	14	18651
E542882320	11/15/2010	8:47:45 PM	NLM-16	EAC	TV	OCO	45	33536
E694504466	11/15/2010	8:48:07 PM	GRI-13	ECC	TV	OCO	8	14175
E027022272	11/15/2010	8:49:36 PM	LOL-22	ECD	TF	OCO	1154	118977
E643746996	11/15/2010	8:50:17 PM	CHM-14	ECF	TV	OCO	37	18786
E212185637	11/15/2010	8:51:59 PM	NLM-15	EAC	TV	OFC	32	26529
10987834	11/15/2010	8:52:00 PM	CRE-12	EAD	TV	OCO	1335	140175
E175997052	11/15/2010	8:53:00 PM	TLN-0155	ECC	TV	OCO	3389	4E+06
E450175503	11/15/2010	8:53:46 PM	KIN-24	ECE	TV	OCO	23	10033
E872648654	11/15/2010	8:54:00 PM	BRS-24	EAC	TV	DNO	719	1E+06
E474677636	11/15/2010	8:55:00 PM	TLN-0078	EAD	TV	OCO	4697	1E+06
E883330650	11/15/2010	8:55:27 PM	CAP-13	ECC	TV	OCO	1029	689759
E702685896	11/15/2010	8:57:26 PM	VAS-13	EBL	TV	OCO	843	610172
E827627642	11/15/2010	8:57:27 PM	HAP-13	EAA	TV	OCO	11	4943
E599534987	11/15/2010	8:57:38 PM	FRG-23	ECC	TV	OCO	1863	1E+06
E503764542	11/15/2010	8:59:12 PM	BUC-16	ECA	TV	OCO	200	51360
E141151839	11/15/2010	8:59:13 PM	THU-16	ECC	TV	OCO	346	387445
E393374312	11/15/2010	9:00:00 PM	TLN-0012	EBD	TV	OCO	713	2E+06
E175587078	11/15/2010	9:00:34 PM	BIG-12	EAC	TV	OTR	94	132581
E034628214	11/15/2010	9:00:37 PM	TAN-13	ECC	TV	OCO	100	76338
E367213359	11/15/2010	9:01:48 PM	BCH-16	EAA	TV	CDH	8	3058
E871404026	11/15/2010	9:01:59 PM	CHM-11	ECF	TV	OCO	35	26356
E309537046	11/15/2010	9:02:05 PM	FNW-15	ECD	TV	OCO	1688	145449
E405580518	11/15/2010	9:02:08 PM	BRS-24	EAC	TV	OPI	8	31663
E429037864	11/15/2010	9:02:29 PM	CHA-15	ECC	TV	ORE	882	1E+06
E150161009	11/15/2010	9:02:48 PM	GRI-16	ECC	TV	OCO	555	653901
E861022173	11/15/2010	9:03:04 PM	IRO-17	ECF	TV	OFU	94	31108
E701061380	11/15/2010	9:03:12 PM	PAT-15	ECC	TV	OCO	142	155178
E134753236	11/15/2010	9:03:26 PM	RIT-16	EAC	TV	OFC	15	24699
E345656280	11/15/2010	9:04:17 PM	PET-16	EAC	TV	OPO	84	77706
E071936915	11/15/2010	9:05:00 PM	TLN-0047	EBJ	TV	OFU	10441	4E+06
E909092904	11/15/2010	9:05:36 PM	AIR-23	ECC	TV	OCO	1281	455267
E377108517	11/15/2010	9:05:37 PM	HAM-13	EAC	TV	OFC	18	41443
E637193688	11/15/2010	9:06:02 PM	BRS-24	EAC	TF	OFC	27	97847
E427160289	11/15/2010	9:06:02 PM	BRS-24	EAC	TF	OCO	52	165410
E236561724	11/15/2010	9:07:40 PM	WIN-15	ECE	UN	OCO	1320	434583
E660096126	11/15/2010	9:08:48 PM	FNW-13	ECD	TV	OCO	943	75471
E687452129	11/15/2010	9:09:05 PM	MAN-12	ECD	TV	OFU	124	40166
E676263416	11/15/2010	9:09:31 PM	PEA-15	EBJ	TV	OCO	670	499853
E943625718	11/15/2010	9:10:25 PM	BRS-13	EAC	TV	OFC	187	621222
E803159811	11/15/2010	9:11:30 PM	BRS-24	EAC	TV	OFC	13	26800
E996640353	11/15/2010	9:12:00 PM	TLN-0235	ECC	TV	OCO	7050	6E+06
E728109662	11/15/2010	9:12:00 PM	TLN-0181	ECA	TV	DNO	6956	5E+06
10986213	11/15/2010	9:13:00 PM	TLN-0155	ECC	TV	OCO	1980	93060

Qualifying Storm Event  
November 15, 2010

NUMBER	DATE	TIME	CKT	MPG	CAZ	EQT	CUST OUT	CUST MIN
E586940217	11/15/2010	9:14:34 PM	CAM-24	EBJ	TV	OFU	1516	500937
E106736357	11/15/2010	9:15:00 PM	LAT-13	EBJ	TV	OFU	1219	485162
E171603764	11/15/2010	9:16:00 PM	TLN-0131	ECC	TV	OCO	6259	4E+06
10986284	11/15/2010	9:16:00 PM	TLN-0154	ECC	TV	OCO	1765	555975
E551754209	11/15/2010	9:16:00 PM	TLN-0059	EAD	TV	OCO	13581	1E+07
E516777508	11/15/2010	9:17:25 PM	MKI-17	ECC	TV	OCO	21	33213
E370327445	11/15/2010	9:19:00 PM	HOB-15	EBI	TF	OCO	1261	828977
E959374965	11/15/2010	9:19:24 PM	MOT-14	ECC	TV	OTR	100	61460
E800290657	11/15/2010	9:19:30 PM	PLU-25	ECC	TV	OCO	585	695273
E360962531	11/15/2010	9:20:21 PM	OBY-17	ECC	UN	OCO	57	79780
E067733089	11/15/2010	9:20:43 PM	HKX-16	EAC	TV	OPO	40	77171
E424894512	11/15/2010	9:20:54 PM	RIV-16	EAC	TV	OFC	4	5456
E553817810	11/15/2010	9:20:59 PM	CLV-16	EAD	TV	OPO	5	9795
E873634490	11/15/2010	9:22:12 PM	FNW-16	ECD	TV	OFU	27	10741
E864885029	11/15/2010	9:26:07 PM	TRA-22	ECE	TV	OCO	26	31327
E281138663	11/15/2010	9:26:31 PM	FWD-16	EBJ	TV	OFU	1774	180031
E217349460	11/15/2010	9:26:41 PM	AIR-26	ECC	TV	OCO	52	66628
E293094529	11/15/2010	9:29:49 PM	DGR-15	ECA	TV	OPO	571	651045
E179804198	11/15/2010	9:30:07 PM	BLU-13	ECC	TV	OCO	167	169486
E598162635	11/15/2010	9:31:00 PM	CUM-15	EBI	TV	OFU	578	65892
E453626386	11/15/2010	9:32:00 PM	LOC-23	EBD	TV	OCO	2172	217200
E877369104	11/15/2010	9:33:36 PM	LON-26	ECC	TV	OCR	398	400149
E219975920	11/15/2010	9:33:37 PM	SIN-24	ECD	UN	OCO	1444	119250
E265041666	11/15/2010	9:33:50 PM	OBY-16	ECC	TV	OCO	124	194081
E230292594	11/15/2010	9:34:00 PM	TLN-0153	ECC	TV	OCO	2498	2E+06
E711496691	11/15/2010	9:34:18 PM	SNQ-17	EBF	TV	OCO	446	29302
E972539650	11/15/2010	9:34:30 PM	SWI-16	ECC	TV	OCO	26	15249
E128598480	11/15/2010	9:35:22 PM	KCR-17	EBJ	TV	OCO	21	37687
E118365962	11/15/2010	9:36:09 PM	FNW-17	ECD	TV	OCO	23	4551
E458201572	11/15/2010	9:37:11 PM	BRI-14	EAA	TV	OFU	2	546
E911467754	11/15/2010	9:38:16 PM	FAB-17	EAD	TV	OCO	3	3311
E118647701	11/15/2010	9:38:22 PM	NUG-26	EAA	TV	OFU	2	563
E015299165	11/15/2010	9:40:16 PM	BLU-17	ECC	TV	OCO	182	266217
E657720703	11/15/2010	9:41:42 PM	SWE-23	EBJ	TV	OFU	52	39952
E509462532	11/15/2010	9:41:48 PM	VAS-23	EBL	TV	OCO	456	325795
E420557607	11/15/2010	9:41:55 PM	EGT-12	EBE	TV	OSV	1	568
E022005020	11/15/2010	9:42:53 PM	WIN-13	ECE	UN	OCO	1210	94824
E353567999	11/15/2010	9:43:18 PM	EPO-12	ECD	TV	OCO	47	18175
E242783225	11/15/2010	9:43:21 PM	MVW-16	EBJ	TV	OFU	168	202717
E853709838	11/15/2010	9:45:00 PM	RDO-12	EBJ	TV	OCO	1440	245718
E712699087	11/15/2010	9:46:49 PM	FAB-13	EAD	TV	OCO	1	1096
E999176831	11/15/2010	9:46:52 PM	KAP-15	ECA	TV	OPO	25	53728
E911009294	11/15/2010	9:48:00 PM	BEL-15	EBJ	UN	OFU	439	310373
E082204236	11/15/2010	9:48:56 PM	LON-17	ECC	TV	OCO	1797	650634
E652780836	11/15/2010	9:49:42 PM	EDG-13	ECA	TV	CDH	40	51972
E241992497	11/15/2010	9:49:50 PM	NNO-13	EBJ	TV	OSV	5	5201
E432823529	11/15/2010	9:49:53 PM	SUN-14	ECA	TV	OCO	524	224857
E114911116	11/15/2010	9:49:58 PM	WOO-27	ECA	TV	OCO	1820	248612

Qualifying Storm Event  
November 15, 2010

NUMBER	DATE	TIME	CKT	MPG	CAZ	EQT	CUST OUT	CUST MIN
E562183638	11/15/2010	9:50:24 PM	HOB-16	EBI	TV	OCO	59	76086
E934874139	11/15/2010	9:50:38 PM	SHA-13	ECA	TV	OCO	1182	144303
E637151533	11/15/2010	9:50:43 PM	RPT-15	ECD	TV	OFU	104	16909
E298173525	11/15/2010	9:50:50 PM	RHO-15	ECA	TV	CDH	250	283542
E676730937	11/15/2010	9:52:08 PM	SEQ-16	EBJ	TV	OFU	2360	2E+06
E863283997	11/15/2010	9:53:00 PM	EVA-23	EBJ	UN	OFU	621	370737
E003080712	11/15/2010	9:53:33 PM	CHA-13	ECC	TV	OCO	2039	2E+06
E3711357572	11/15/2010	9:53:34 PM	PLU-24	ECC	TV	OCO	284	305991
E390992026	11/15/2010	9:54:00 PM	TLN-0146	EBI	TV	OFU	10949	6E+06
E664487893	11/15/2010	9:55:00 PM	LWS-14	EBI	TV	OCO	1584	875952
E730039674	11/15/2010	9:55:15 PM	EDG-16	ECA	TV	OCO	743	1E+06
E769039698	11/15/2010	9:56:01 PM	FAL-16	EBF	TV	OCO	19	5510
E963085856	11/15/2010	9:56:15 PM	LAT-16	EBJ	PO	OSV	1	1598
E257972454	11/15/2010	9:57:16 PM	HOB-16	EBI	TV	OCO	173	156173
E276840323	11/15/2010	9:57:26 PM	LON-23	ECC	TV	OCO	531	206056
E874007428	11/15/2010	9:57:38 PM	CAS-16	EBH	TV	OCO	7	7584
E711268678	11/15/2010	9:57:40 PM	GRA-16	EBJ	TV	OFU	1519	930134
E039241782	11/15/2010	9:57:59 PM	FWY-11	EBJ	TF	OFU	1376	608215
E775565341	11/15/2010	9:59:11 PM	LTA-18	ECA	TV	OPO	1391	1E+06
E160176092	11/15/2010	9:59:51 PM	HOB-16	EBI	TV	OCO	236	302115
E488110589	11/15/2010	10:00:26 PM	WOO-26	ECA	TV	OCO	1816	371493
E857435062	11/15/2010	10:01:44 PM	YEL-25	ECC	TV	OCO	58	90263
E512297396	11/15/2010	10:01:56 PM	HOB-16	EBI	TV	OCO	63	57523
E804881341	11/15/2010	10:02:56 PM	BDI-15	EBI	TV	OCO	30	27512
E823811512	11/15/2010	10:03:00 PM	DES-16	EBJ	TV	OFU	1188	71280
E621286450	11/15/2010	10:03:10 PM	HEM-15	ECA	TV	OPO	1684	2E+06
E534746729	11/15/2010	10:03:15 PM	LYO-15	EBJ	TV	OTH	351	495524
E990947397	11/15/2010	10:03:43 PM	LEA-15	EBI	TV	OFU	1370	162048
E395955885	11/15/2010	10:03:49 PM	LON-25	ECC	TV	OCO	6	10837
E509832583	11/15/2010	10:04:58 PM	PRI-23	ECC	TV	OCO	1444	996408
E196476105	11/15/2010	10:05:32 PM	BLU-16	ECC	TV	OPO	189	331027
E775442400	11/15/2010	10:06:00 PM	LMD-15	EBJ	TV	OCO	2284	1E+06
E370587600	11/15/2010	10:06:57 PM	NNO-15	EBJ	TV	OPO	155	218868
E567568776	11/15/2010	10:07:00 PM	CLE-11	EBH	TV	OCO	79	7821
E514074459	11/15/2010	10:07:00 PM	NBE-16	EBF	TV	OSV	1842	1E+06
E717655996	11/15/2010	10:07:11 PM	SEQ-22	EBI	TV	OCO	77	62587
E484947107	11/15/2010	10:07:43 PM	KCR-16	EBJ	TV	OCO	70	113910
E145158729	11/15/2010	10:08:16 PM	BDI-13	EBI	TV	OCO	126	46238
E725295004	11/15/2010	10:08:31 PM	KAP-16	ECA	TV	CDH	29	38265
E094370844	11/15/2010	10:09:21 PM	PIN-27	EBF	TV	OCO	40	28906
E867194986	11/15/2010	10:09:23 PM	LMC-23	EBF	TV	OSV	1	713
E214521022	11/15/2010	10:09:28 PM	LMD-13	EBJ	TV	OFU	94	146878
E033144384	11/15/2010	10:10:17 PM	CHA-16	ECC	TV	OCO	263	144575
E751606504	11/15/2010	10:10:24 PM	LAC-17	ECC	TV	OTF	68	18877
E135499225	11/15/2010	10:12:20 PM	SNQ-15	EBF	TV	OCO	11	7124
E582151324	11/15/2010	10:12:41 PM	OSC-23	EBI	TV	OPO	35	32106
E930745682	11/15/2010	10:12:44 PM	SHD-15	EBI	TV	OCO	530	336691
E075840003	11/15/2010	10:14:06 PM	HIG-15	EBE	TV	OPO	71	23083

Qualifying Storm Event  
November 15, 2010

NUMBER	DATE	TIME	CKT	MPG	CAZ	EQT	CUST OUT	CUST MIN
E341966113	11/15/2010	10:16:19 PM	GAR-16	ECA	TV	CDH	1418	987897
E609827337	11/15/2010	10:18:10 PM	SUN-11	ECA	TV	CDH	300	282550
E529408671	11/15/2010	10:18:21 PM	FAL-15	EBF	TV	OCR	447	256608
E120583904	11/15/2010	10:19:00 PM	MHT-15	EBJ	TV	OFU	49	57869
E553347795	11/15/2010	10:19:22 PM	CHI-15	ECD	TV	OCO	2	2073
E329871263	11/15/2010	10:19:47 PM	RAI-13	ECC	TV	OCO	220	202448
E262048884	11/15/2010	10:21:00 PM	LON-22	ECC	TF	OCO	745	260750
E266583564	11/15/2010	10:22:02 PM	SPA-16	ECA	TV	CDH	52	59642
E894237881	11/15/2010	10:26:00 PM	SHD-17	EBI	TV	OCO	886	631410
E752323958	11/15/2010	10:26:50 PM	CPV-12	EAD	TV	OFU	53	74898
E476788501	11/15/2010	10:29:06 PM	CED-17	ECA	TV	OCO	1	1115
E546019480	11/15/2010	10:31:00 PM	GLC-15	EBJ	TV	OTH	10	22390
E275142061	11/15/2010	10:31:06 PM	HEM-16	ECA	TV	DNO	452	449695
E249543814	11/15/2010	10:31:06 PM	HEM-16	ECA	TV	OPO	75	33593
E078056850	11/15/2010	10:31:23 PM	EDG-15	ECA	TV	OCO	40	15745
E105839535	11/15/2010	10:32:05 PM	WLK-13	ECA	TV	CDH	9	10889
E657443560	11/15/2010	10:33:31 PM	RAI-11	ECC	TV	OCO	235	385044
E492485915	11/15/2010	10:33:34 PM	RAI-12	ECC	UN	OCO	290	363206
E328951801	11/15/2010	10:33:38 PM	MKI-16	ECC	TV	OCO	17	20746
E628067172	11/15/2010	10:33:41 PM	FRA-13	ECD	TV	OCO	32	13322
E708583769	11/15/2010	10:33:52 PM	EGT-25	EBF	TV	OSV	5	1821
E263013163	11/15/2010	10:35:08 PM	DGR-13	ECA	TV	OCO	200	84773
E323253500	11/15/2010	10:35:27 PM	LTA-17	ECA	TV	OCO	1015	293893
E224954302	11/15/2010	10:37:00 PM	CRE-12	EAD	TV	OPO	62	90706
E498994076	11/15/2010	10:38:58 PM	FRU-25	ECA	TV	OCO	79	21570
E949464774	11/15/2010	10:39:17 PM	LAT-14	EBJ	TV	OCO	192	278538
E136122962	11/15/2010	10:41:06 PM	MAP-15	EBF	TV	OCO	111	60373
E883198797	11/15/2010	10:41:06 PM	GAR-13	ECA	TV	OCO	6	9029
E511788652	11/15/2010	10:41:22 PM	RHO-13	ECA	TV	CDH	2	2071
E842124070	11/15/2010	10:42:03 PM	PET-13	EAC	TV	OCO	97	96316
E344408856	11/15/2010	10:43:36 PM	LMC-25	EBF	TV	OCO	5	3907
E128529441	11/15/2010	10:43:41 PM	MHT-13	EBJ	TV	OFU	30	35590
E944039559	11/15/2010	10:45:34 PM	SPA-17	ECA	TV	CDH	1	1049
E189655698	11/15/2010	10:45:51 PM	BUC-15	ECA	TV	CDH	6	2869
E905111288	11/15/2010	10:47:01 PM	GLC-14	EBJ	TV	OFC	101	134631
E723492374	11/15/2010	10:47:31 PM	VAS-12	EBL	UN	OCO	17	34110
E044286413	11/15/2010	10:47:40 PM	SMR-26	ECA	TV	CDH	1	1434
E232486481	11/15/2010	10:48:16 PM	SWI-17	ECC	TV	OSV	1	1169
E339888257	11/15/2010	10:48:37 PM	HAZ-15	EBE	TV	OFU	7	5106
E648901607	11/15/2010	10:48:52 PM	NBE-15	EBF	TV	OCO	644	67062
E924709473	11/15/2010	10:48:58 PM	SME-12	EBE	TV	UTC	16	4225
E128532420	11/15/2010	10:49:31 PM	SEQ-17	EBJ	TV	OFU	29	45863
E033370414	11/15/2010	10:52:15 PM	SOO-27	EBJ	TV	OCO	6	4007
E847024071	11/15/2010	10:52:54 PM	RAI-14	ECC	TV	OCO	14	14057
E889741298	11/15/2010	10:56:22 PM	AIR-22	ECC	TV	OCO	39	40234
E191507497	11/15/2010	10:56:48 PM	EDG-16	ECA	TV	OFU	2	2246
E158645302	11/15/2010	10:57:14 PM	KNT-35	EBJ	TV	OCO	50	24838
E486840908	11/15/2010	10:59:08 PM	OSC-22	EBI	TV	OFU	8	8039

Qualifying Storm Event  
November 15, 2010

NUMBER	DATE	TIME	CKT	MPG	CAZ	EQT	CUST OUT	CUST MIN
E297837070	11/15/2010	10:59:43 PM	LMD-16	EBJ	TV	OCO	56	81440
E898523973	11/15/2010	10:59:50 PM	BON-16	ECA	TV	CDH	25	36379
E512902407	11/15/2010	11:00:20 PM	MVW-17	EBJ	TV	OFU	32	22709
E473320670	11/15/2010	11:01:38 PM	MVW-13	EBJ	TV	OTR	27	38026
E495807816	11/15/2010	11:02:00 PM	MVW-15	EBJ	TV	OFU	2324	288176
E304436894	11/15/2010	11:02:56 PM	WAB-12	EBI	TV	OPO	23	30523
E052776937	11/15/2010	11:11:40 PM	ORC-13	EBJ	TV	OCO	154	201175
E298799364	11/15/2010	11:13:08 PM	ORT-25	ECA	TV	OCO	19	15140
E356798514	11/15/2010	11:13:45 PM	NBE-12	EBF	TV	OCO	14	8446
E038872947	11/15/2010	11:14:27 PM	BEL-25	EBJ	TV	OTH	141	203118
E618356330	11/15/2010	11:16:23 PM	BLA-13	EAA	TV	OFU	3	296
E101174565	11/15/2010	11:16:59 PM	CLE-14	EBH	TV	OCR	12	10404
E450082846	11/15/2010	11:17:24 PM	LAC-13	ECC	TV	OCO	159	170225
E006925904	11/15/2010	11:17:36 PM	PET-12	EAC	TV	OFU	32	14637
E088548016	11/15/2010	11:19:24 PM	BIG-15	EAC	TV	CDH	64	65190
E803105946	11/15/2010	11:19:46 PM	SHD-18	EBI	TV	OCO	247	335978
E256264066	11/15/2010	11:22:49 PM	YEL-26	ECC	TV	OCO	56	83506
E422235402	11/15/2010	11:24:16 PM	SOO-23	EBI	TV	OFC	19	15499
E403356983	11/15/2010	11:28:20 PM	BON-17	ECA	TV	CDH	6	9094
E144504135	11/15/2010	11:31:03 PM	MIR-17	EBI	TV	OPO	7	9443
E884093033	11/15/2010	11:32:13 PM	WOL-25	ECC	UN	OFC	12	17625
E447627609	11/15/2010	11:32:50 PM	FNW-13	ECD	TV	CDH	1	563
E031157950	11/15/2010	11:33:43 PM	WLS-12	EAC	TF	OFC	30	12879
E580298915	11/15/2010	11:34:57 PM	HAM-15	EAC	TV	OFC	9	17766
E848462167	11/15/2010	11:37:02 PM	MAN-16	ECD	TV	OFC	4	1604
E589619966	11/15/2010	11:37:46 PM	GAG-11	EAC	TV	OFC	54	55471
E620789132	11/15/2010	11:38:33 PM	PRI-24	ECC	TV	OCO	216	250657
E885278545	11/15/2010	11:40:55 PM	LYO-15	EBI	TV	OFC	6	7885
E289580726	11/15/2010	11:42:30 PM	MAP-13	EBF	TV	OCO	1	465
E035263650	11/15/2010	11:49:06 PM	ENU-17	EBI	TV	OTH	10	11536
E094201691	11/15/2010	11:52:42 PM	CUM-13	EBI	TV	USV	4	6429
E305668193	11/15/2010	11:56:00 PM	SWA-16	EAD	TV	OFC	21	32844
E669029817	11/15/2010	11:56:00 PM	SWA-15	EAD	TV	OCO	13	7748
E465539705	11/15/2010	11:56:00 PM	SWA-13	EAD	TV	OCO	8	4768

## Terms, Codes and Definitions Used on Detail Reports

<b>Notification</b>	<b>[Notification Number]</b> A number assigned by SAP, identifying the outage record
<b>Date</b>	The date of the outage
<b>Time</b>	The time of the outage
<b>Circuit</b>	<b>[Reference Circuit]</b> The circuit identifier for the affected circuit

<b>Area</b>	<b>[Maintenance Planner Group]</b> A code representing the energy, region and service center	
	EAA – Bellingham	EBJ – South King
	EAB – Lynden	EBK – Southwest King
	EAC – Skagit	EBL – Vashon
	EAD – Whidbey	ECA – Puyallup
	EBD – Redmond	ECC – Olympia
	EBE – Factoria	ECD – Port Orchard
	EBF – Snoqualmie	ECE – Poulsbo
	EBI – Enumclaw	ECF – Port Townsend

<b>Cause</b>	Cause of Outage	
	AO – Accident Other	EF – Equipment Failure
	BA – Bird or Animal	EO – Electrical Overload
	CP – Car Pole	FI – Faulty Installation
	CR – Customer Request	TF – Tree Off Right-of-Way
	DU – Dig-up Underground	TO – Tree On Right-of-Way
	TV – Trees/Vegetation	SO – Scheduled Outage
	UN – Unknown	

<b>Equipment</b>	Affected by, or involved in the outage	
	OCN – Connector	OSW – Overhead Switch
	OCO – Overhead Conductor	OTF – Overhead Transformer Fuse
	OCR – Crossarm	OTR – Overhead Transformer
	OFC – Overhead Cut-out	OUP – OH to UG Primary
	OFS – Overhead Fire Signal	OUS – OH to UG Secondary Service
	OFU – Fuse Link/OH Line Fuse	SBF – High-side Bank Fuse
	OGS – Span Guy	SCB – Power Circuit Breaker
	OHR – Overhead Recloser	UOT – Underground Outdoor Term
	OIN – Insulator	UPC – Underground Primary Cable
	OJU- Jump Wire	UPT – Padmount Transformer
	OPI – Overhead Pin Insulator	USV – Underground Service
	OPO – Pole	UTC – Underground Terminal Fuse
	OSV – Overhead Service	UTR – Submersible Transformer
	ORE – Regulator	



### Codes, Definitions – Continued

<b>CUST OUT</b>	<b>[Customer Out]</b> The number of customers without power for any given outage record
<b>CUST MIN</b>	<b>[Customer Minutes]</b> The total number of minutes customers were without power for any given record

## Media Coverage

### The Seattle Times

Tuesday, November 16, 2010 · Page updated at 01:16 AM

## Winds cut power, block roads across Puget Sound

By Jill Kimball, *Seattle Times* staff reporter

Strong winds caused scattered power outages and blocked roads throughout the Puget Sound area Monday night.

Some 17,000 customers of Seattle City Light lost power, the utility said, with some of the largest outages in West Seattle and Rainier Valley.

National Weather Service meteorologist Doug McDonnal said there were also power outages in Tacoma.

Details were not immediately available because Tacoma Public Utilities' phone lines were jammed. But the webcam on the state Department of Transportation's website indicated numerous outages, including around the Narrows Bridge.

In the Seattle area, winds were 20 to 30 miles per hour with gusts about 35 to 40 mph, McDonnal said. It's not quite windstorm status, McDonnal said, but with water-heavy leaves blowing from trees, wires could easily be knocked down, putting electrical power in peril. He expected the strongest winds to be over by 1 a.m.

In Lake City, downed electrical wires caused outages around 8:30 p.m., according to the Seattle Fire Department. There are also power outages in Auburn and Kent. Crews were still assessing how many people lost power.

Winds were stronger on Whidbey Island and the San Juan Islands. at 35 to 40 mph with gusts reaching 60 mph.

In Eastern Washington, sustained winds of 30 to 40 mph with gusts of 55 mph were expected throughout the Wenatchee Valley south of Chelan Monday night, according to the Associated Press. East Wenatchee possibly would catch the brunt of the windstorm, said Jeffrey Cote, Weather Service forecaster. Debris on Interstate 5 around mile post 99 was blocking some lanes, as is a tree on eastbound State Route 302 around the 118th Avenue Northwest exit in Gig Harbor, according to the Washington State Patrol. In Eastern Washington, sustained winds of 30 to 40 mph with gusts of 55 mph were expected throughout the Wenatchee Valley south of Chelan Monday night, with East Wenatchee possibly catching catch the brunt of the wind storm, said Jeffrey Cote. Weather Service forecaster. "Anything that's not tied down is likely to blow around," he said.

Material from The Associated Press was included in this report.

Copyright © The Seattle Times Company

# The Olympian<sup>theolympian.com</sup>

Wednesday, Nov. 17, 2010

## After rain deluge, cold likely lies ahead

<http://www.theolympian.com/2010/11/17/1443601/after-rain-deluge-cold-likely.html>

By Nate Hulings

South Sound likely will receive a one-two punch from Mother Nature this week, receiving an uppercut in the form of cold nights and a chance of snow this weekend after absorbing a deluge of rain and wind.

Periods of heavy rain created large puddles on city streets and standing water on Interstate 5 as crews worked to clear storm drains clogged with debris left from a windstorm that toppled trees and left thousands without power.

Public works crews kept busy clearing catch basins and storm drains.

“(The wind) took a lot of leaves off the trees,” said Steve Craig, Tumwater’s operations manager. “We ask residents if they see plugged drains ... help us out and try and keep their neighborhoods clear.”

Olympia stormwater utility crews worked all day clearing troubled areas, operations supervisor Gary Frank said.

Despite the recent wind and rain, the stormwater system has performed “very well” and has not had problems handling the rainfall, he said.

It wasn’t just city crews who had their hands full.

Early this afternoon, parts of a seven-mile stretch of Interstate 5 between Trospen Road in Tumwater and Martin Way in Lacey were covered in water, according to the state Department of Transportation.

Below the interstate, the catch basins on Martin Way also were clogged, causing water to back up into the roadway.

The county also received a few calls Wednesday about fallen trees and placed signs warning of water over roads in several locations, but it did not have to close any roads, according to the road maintenance office.

Puget Sound Energy crews also worked nonstop through today and were able to restore power to most customers, a company spokesperson said.

### **WHAT'S NEXT**

Rain showers are likely to continue today and tomorrow, with a chance of snow showers in the higher hills Friday evening as temperatures drop into the low 30s, said Johnny Burg, a meteorologist for the National Weather Service.

Qualifying Storm Event  
November 15, 2010

Sunday could bring snow showers or a rain-snow mix in the afternoon, with lows in the upper 20s. That pattern likely will continue through Monday, though no accumulations are expected.

Conditions are expected to will get downright chilly by Tuesday evening, with temperatures dropping into the lower 20s.

**THE BELLINGHAM HERALD**  
Thursday, Nov. 18, 2010

## Snow expected in Whatcom County lowlands Thursday night

By Zoe Fraley

Whatcom County lowlands could get the first snow of the season Thursday evening, Nov. 18, as overnight temperatures are forecast to hover around freezing.

There is a possibility of occasional snow through Tuesday, though accumulation should be fairly light, said Andy Haner, a National Weather Service meteorologist.

"It's going to be one of those snows that's kind of hit or miss," he said. "Some places will get it, some won't."

On Thursday night there could be light accumulation in the hills, with an inch or two of snow building up by Friday night.

Icy winds from British Columbia could pick up by Saturday, bringing colder temperatures with them. Temperatures are forecast to remain at or below freezing from Sunday night to Wednesday afternoon, with snow flurries possible.

Any winterizing people have to do for their homes or cars should be done soon, Haner said, before the subfreezing temperatures kick in.

At this point, Thanksgiving should be cold and dry, but it's too far out to predict accurately, Haner said.

Forecasters expect more precise details Thursday on possible snowfall.

The threat of snow comes on the heels of windy weather that blew across the county Monday and Wednesday.

Wednesday morning's gusts reached 46 mph, according to the official weather service gauge at Bellingham International Airport.

A few power lines were reported down Wednesday, along with some tree limbs. Monday night's windstorm caused more damage and knocked out power in scattered areas around the county. Puget Sound Energy spokeswoman Abigail Elliott said crews were out Wednesday restoring the last of those outages and responding to any new problems.

## OUT OF THE COLD

Interfaith Coalition of Whatcom County is keeping an eye on the cold snap, but hasn't yet decided to open its severe-weather shelter for the homeless.

The coalition will open a shelter if the weather dips into the low 20s — or lower — overnight, or a significant amount of snow falls, according to Laura DeRose Harker, executive director.

Call the coalition's severe-weather shelter hotline at 360-788-7983 to learn if a temporary shelter is being opened.



Wednesday, Nov. 17, 2010

## 'Pretty scary': Downed power line electrifies metal fence around propane business

By Charlie Bermant

CHIMACUM -- A power line dragged down by a wind-toppled tree Wednesday morning electrified a 160-foot metal fence in Chimacum, sending some 8,000 volts dancing down its length and crackling into flames and popping explosions.

The loss of the power line, a primary line from Puget Sound Energy's Port Hadlock substation, knocked out electricity to 937 customers, said Davina Gruenstein, company spokeswoman.

Power was restored within an hour, she said.

East Jefferson Fire-Rescue firefighters found smoke, steam, flames and dramatic explosions when they arrived at Mountain Propane at 265 Chimacum Road at 9:13 a.m.

Fire Chief Gordon Pomeroy said that he and Assistant Chief Steve Craig were examining the fence "when the explosions occurred right in front of us.

"I looked at him and said, 'We need to be somewhere else right now,'" Pomeroy said.

Firefighters closed Chimacum Road from Ness' Corner Road to just south of Mountain Propane until 11:45 a.m.

After Puget Sound Energy crew members disconnected the power, firefighters hosed down the fence and nearby foliage to quench the fire.

The heat had been so intense that it had melted ground cover and exploded poured cement in the base of several fence posts.

"I'm just glad that no one was hurt in this incident," Pomeroy said.

"It was pretty scary."

Mountain Propane employee Josh White was working in the yard in the front of the facility at about 9 a.m. when he heard an explosion as a nearby tree parted a power line.

White phoned 9-1-1 for emergency help, then flagged down a Jefferson County sheriff's deputy, who secured the area until more help arrived.

Wind-driven tree limbs snagging power lines resulted in a total of 958 customers losing electricity Wednesday, Gruenstein said, the largest outage being caused by the major

Qualifying Storm Event  
November 15, 2010

power line that electrified the fence.

Power was restored to all Wednesday, including the other 21 customers scattered throughout the county who lost power.

Power was cut off in about eight locations throughout East Jefferson County, said Bob Hamlin, Jefferson County Department of Emergency Management program manager.

"We had a short period of extreme wind activity, but everything was cleared up by about noon," he said.

Wednesday morning's windstorm followed closely on the heels of power line repairs made after an unexpectedly harsh blow Monday night that cut off electrical power to 14,200 people on the North Olympic Peninsula, 6,000 of them in East Jefferson County.

Port Townsend had gusts of up to 51 mph at about 8:25 a.m. Wednesday, with sustained winds of 36 mph, and Point Wilson near Port Townsend had gusts of up to 55 mph and sustained winds of 45 mph, the National Weather Service said.

Gusts of 60 mph hit Whidbey Island at about 8 a.m. Wednesday.

Quilcene had gusts of 26 mph at about 7:30 a.m.



Wednesday, Nov. 17, 2010

## Windstorm puts Snoqualmie Valley in the dark

By Dan Catchpole

Much of the Snoqualmie Valley went dark late the evening of Nov. 15 as high winds buffeted the area, knocking down trees and power lines.

The outages left more than 140,000 Puget Sound Energy customers without electricity, according to MacKenzie McDowell, a PSE spokeswoman.

The outages stretched across King, Skagit, Pierce and Island counties.

Customers of Tanner Electric Cooperative in North Bend were in the dark as well, according to its website.

"All our crews are out and will work through the night to restore power," read a statement on Tanner Electric's website.

By the morning after, PSE had restored power to about 60,000 customers, McDowell said.

PSE had 52 four-person crews working to restore power with 25 additional crews en route from outside the affected areas, McDowell said.

All PSE customers should have electricity restored by Wednesday, but "some could struggle into Thursday," she said.

Tanner Electric had restored power to more than half of its 1,700 customers, and expected to have all customers back online by the end of Nov. 16.

Police and fire services in North Bend and Snoqualmie said no injuries or serious damage had been reported, other than downed trees and poles across roadways.

Who to contact

- Puget Sound Energy: Call 888-225-5773 toll free or go to [www.pse.com](http://www.pse.com).
- Tanner Electric Cooperative: Call 888-0623 or go to [www.tannerelectric.coop](http://www.tannerelectric.coop).

## UPDATE | Hold tight: More wind expected to hit Whidbey today

By ROY JACOBSON

Another windstorm is predicted to hit from the south sometime today in the wake of a sudden blow Monday night that caused an island-wide power outage on Whidbey.

Dennis D'Amico of the National Weather Service in Seattle said Tuesday that southeast winds are forecast at 20 to 30 miles per hour today, with gusts to 45 mph.

"This one will come from a more normal direction," D'Amico said. "It's pretty common this time of year."

He said Monday's windstorm was anything but common. A severe low-pressure system out of the east swept past British Columbia, rapidly pushing up pressure in the west, D'Amico said.

The result was sudden gusts that swept across Whidbey on Monday night, knocking down trees, branches and power lines and leaving more than 1,500 customers in the dark in the Langley area alone.

"It came up a little stronger than expected," D'Amico said. "It was a very quick transition."

Power was knocked out in the Langley area about 8:30 p.m. Monday. The outage eventually spread across the island. Power was still out from Greenbank south by 7:30 Tuesday morning.

Deputy Chief Jon Beck of Island County Fire District 3 said firefighters responded to more than 20 calls of trees and branches down on roads and power lines between 8:30 p.m. and midnight Monday.

A tree with power lines entwined forced the closure of a half-mile of Langley Road between Maxwellton Road and Zig Zag Lane, Beck said.

Similar conditions forced brief closures of sections of Lancaster Road, Lakeside Drive in the Goss Lake area and Saratoga Road in the Fox Spit area, he said.

Beck said firefighters removed trees and limbs from several other South End roads.

"But if power lines are involved, we have to leave them for Puget Sound Energy," he said, because of the danger that the lines may be live.

Beck said that although trees took the brunt of the storm, there was little property damage and no injuries reported.

He said the only report of a tree on a house was from one of District 3's own crew members.

He said Brandon Callahan returned to his house on Andreason Road after spending three hours clearing debris to find a 20-inch diameter tree on his roof. The roof was punctured, but there was little other damage, Beck said.

He praised the response of the firefighters to the storm, despite being caught offguard.

"It was a surprise," he said. "It came through pretty quickly. The volunteers did a great job stepping up to the plate."

He said all the major roads in the South End were passable by Tuesday morning, although some smaller roads were still littered with fallen tree debris.

"The smaller roads don't pose much of a danger," Beck said.

Monday's windstorm had a ripple effect on South End life.

The lights went out during the Langley City Council meeting, shortly after Police Chief Bob Herzberg had finished talking about his budget and grant funding. It had helped pay for an emergency generator for city hall that gave the whole building enough juice so it wouldn't become a "meat locker" during winter outages, he noted.

The blackout hit city hall at 8:36 p.m., and when the generator kicked in and the lights came back on a moment later, all eyes turned to Herzberg.

Herzberg raised his arms triumphantly in the air and grinned.

"Is God on your side or what?" asked Mayor Paul Samuelson.

Qualifying Storm Event  
November 15, 2010

Council members were so impressed, they decided to continue their meeting, despite the growing darkness in the rest of town.

Drivers swerved to avoid tree debris on several main roadways beginning Monday night. Darkened traffic lights had drivers treating intersections like four-way stops.

The blackout forced South Whidbey School District officials to cancel all classes for the day on Tuesday.

Lines formed for gasoline early Tuesday morning at the Short Stop Texaco in Freeland, one of the few stations that were operating under generator power. Some customers were getting gas for their own generators.

Puget Sound Energy reported on its website that more than 140,000 customers lost power during the peak of the storm that hit several counties in its service area Monday night.

By 8 a.m. Tuesday, 60,000 customers in 115 locations across Western Washington, including portions of South Whidbey, remained without power, PSE said. The company expected to restore the bulk of the service by late Tuesday.

The company said the greatest storm damage occurred in southeast King County, east Pierce County, Olympia, Rochester, Yelm, South Whidbey and east of Concrete.

PSE expected to have 77 four-person line crews working to restore the outages by midday Tuesday.

## Skagit Valley Herald

Thursday, Nov. 18, 2010

### Crews scramble to restore power after windstorm

By AARON BURKHALTER

Wind and rain finally eased up in Skagit County on Wednesday, but crews from Puget Sound Energy continued to travel across the state restoring power and repairing damaged lines in the evening.

About 140,000 customers were without power in Western Washington at one point between Monday and Wednesday, Puget Sound Energy spokeswoman MacKenzie McDowell said.

Power was out in east Skagit County from Monday evening to Tuesday evening. Another power outage in Concrete began early Wednesday morning and was restored at 9:30 a.m., after Concrete School District canceled classes for the day.

Evening ferries between Friday Harbor, Lopez Island and Anacortes were delayed by high winds. Weather Service Meteorologist Johnny Burg expected the rain and wind should be done by this morning, but chilly temperatures are settling over the valley.

A winter storm warning is in effect for elevations above 2,000 feet. Mount Baker was forecast to have as much as two feet of snow. Some snow is expected at lower elevations over the weekend, but not much accumulation.

Mount Vernon will have lows in the 30s overnight today and Friday, dipping down into the 20s Saturday and Sunday. Upriver, Concrete could have temperatures as low as 24 degrees Saturday night.

Burg said that temperatures should rise again before Thanksgiving.

Three days of weather stretched Puget Sound Energy's crews this week. McDowell said the company brought in 30 additional crews from British Columbia and Oregon to respond to incidents throughout Western Washington.

One of those incidents took place in Mount Vernon, where a tree at First Street and Kincaid Street hit a line Wednesday. Less than a block away, a power pole was also cracked and bent midway up.

The tree was discovered between 7 and 8 a.m. Wednesday, but Mount Vernon Public Works crews had to wait for PSE to repair the lines before cleaning up the area.

"You've got to treat these power lines with extreme caution and respect," said Public Works Director Esco Bell.

Crews cleaned up lots of downed limbs and trees over the week, he said.



# The Seattle Times

Tuesday, November 16, 2010 - Page updated at 01:46 PM

## Outages affected 230,000 customers, power being restored Tuesday

By Seattle Times staff

High winds that gusted at more than 40 miles an hour at one point blew down trees and downed power lines, leaving more than 230,000 customers without power overnight in a wide area around Puget Sound.

Puget Sound Energy reported 140,000 customers lost power during the windstorm. By Tuesday morning, that number had been reduced to 80,000, in about 300 locations scattered throughout its service area outside Seattle. The utility hoped to get power restored to everyone Tuesday.

Tacoma Power reported 6,000 customers were without power Tuesday morning, down from 54,000 Monday night.

Snohomish County PUD said about 7,500 customers were without power Tuesday morning, down from 20,000 Monday night. Mike Thorne, spokesman for the utility, said winds of 40 miles an hour were reported in Everett overnight.

Seattle City Light had just a handful of customers in the dark Tuesday morning, down from 17,000 â€” mostly in West Seattle and the Rainier Valley.

Copyright © The Seattle Times Company



**Tuesday, Nov. 16, 2010**

## UPDATED: Power still out throughout the region this morning

By [Stacey Mulick](#)

Thousands remain without electricity this morning after a major windstorm whipped through the region Monday night.

Tacoma Power reports that about 20,000 homes and businesses are still in the dark this morning. That's down from 30,000 customers earlier this morning. The outages are spread throughout the utility's service area. If you are a Tacoma Power customer who still does not have power, call 253-502-8602.

Peninsula Light is working to restore power to about 4,500 customers this morning. That's down from 5,600 customers a couple of hours ago. The utility warns that customers should expect to be without power for a majority of the day.

Puget Sound Energy reports that, as of 8:30 a.m., about 80,000 customers in Pierce, King and several other Western Washington counties are still in the dark this morning. The utility has already restored power to about 60,000 customers in 115 areas. Puget Sound Energy has 52 4-person crews and 25 line crews working today. Crews hope to have the bulk of the outages fixed later today.

Pierce County Emergency Operations Center opened at 6 a.m. this morning to support the county and its jurisdictions as cleanup begins. Tacoma fire crews continue to respond to reports of downed power lines and trees this morning, spokesman Joe Meinecke said.

"We're still busy," he said.

The Fire Department responded to roughly 75 calls - most, if not all, weather-related - between 9 p.m. and midnight. There were no reports of major injuries and no significant fires, Meinecke said.

A boat house at the Narrows Marina got loose last night and smashed into a small dock.

As a reminder, Meinecke suggests people use flashlights - not candles - during power outages. In addition, BBQs should not be brought inside to cook on or keep warm.

Also, winds at Camp Muir on Mount Rainier reached a maximum speed of 111 mph, according to weather data collected at 11 p.m. Monday and were averaging 86 mph at that time.

Staff writer Jeff Mayor contributed to this report.



Tuesday, Nov. 16, 2010

## Trees crash down, thousands without power in western Washington

SEATTLE -- Power crews are working to restore service after 150,000 customers were without power after a windstorm hit Western Washington hard.

Puget Sound Energy started out with about 90,000 outages across all of the counties it services for except Kittitas County. Olympia was hit especially hard. By 7:30 a.m., 76,000 were still without power. The utility said some in Thurston County may not have service restored until Thursday.

Chris Gleason with Tacoma Power said they started out with 54,000 outages but are down to 20,000 customers without power as crews work to restore service.

Jonathan White said 5,600 customers of Peninsula Light Company in Gig Harbor and the Key Peninsula were in darkness, with trees being the main culprit for the outages.

Snohomish PUD has 10,000 customers without power and Seattle City Light has 821.

The high winds slowed traffic on the State Route 520 Bridge on Monday evening and prompting a small craft advisory from [the National Weather Service](#).

KIRO 7 Eyewitness News crews measured wind gusts up to 20 mph down by the Seattle waterfront; gusts of up to 35 mph were measured at Boeing Field. The highest gusts recorded around the sound were 55 mph.

Qualifying Storm Event  
November 15, 2010

The winds caused a four-story scaffolding to twist and collapse on phone and cable lines near 49th and North Phinney on Phinney Ridge, and [forced the Spirit of Kingston to turn around](#) and blew waves over the 520 Bridge, which slowed down traffic.

On Tuesday morning, Pierce County suffered some of the worst damage with outages and trees down. Sheri Badger said the county opened the Emergency Operations Center where staff can get a full picture of what's going on around the county. The center opened at 6 a.m.

Damage from the storm was seen in Renton in the area of Highway 169 southeast of Interstate 405 where traffic lights were out, slowing commuters. A Puget Sound Energy crew was at Cedar River Park tracking down a circuit outage that darkened a nearby hotel and homes.

On the outskirts of Renton at Southeast 232nd Street, a tree slammed down onto power lines overnight, causing one of the many scattered outages.

On Mercer Island, wind brought down a tree onto a house, opening a large hole. No one was hurt.

In the area southeast of North Bend, peak gusts of 60 mph brought tree branches down on streets and power lines, plunging a neighborhood into the dark. Tree branches could be seen on the roof of a pickup.

On Tuesday morning, gusts of 30 mph were still being felt on Whidbey Island but, the wind and rain is expected to die down throughout the day.

## The Seattle Times

Tuesday, Nov. 16, 2010

### Outages affected 230,000 customers, power being restored Tuesday

*High winds caused major power outages throughout Puget Sound, but the utilities that provide the power hope have it restored Tuesday.*

By [Seattle Times staff](#)

High winds that gusted at more than 40 miles an hour at one point blew down trees and downed power lines, left more than 230,000 customers without power overnight in a wide area around Puget Sound.

Puget Sound Energy reported 140,000 customers lost power during the wind storm. By Tuesday morning, that number had been reduced to 80,000, in about 300 locations scattered through its service area outside Seattle. The utility hoped to get power restored to everyone Tuesday.

Tacoma Power reported 30,000 customers were without power Tuesday morning, down from 54,000 Monday night.

Snohomish County PUD said about 7,500 customers were without power Tuesday morning, down from 20,000 Monday night. Mike Thorne, spokesman for the utility, said winds of 40 miles an hour were reported in Everett overnight.

Seattle City Light had just a handful of customers in the dark Tuesday morning, down from 17,000 — mostly in West Seattle and the Rainier Valley — who lost their power overnight.



Tuesday, Nov. 16, 2010

### Wash. winds gust to 60 mph; cut power to thousands

*A November windstorm hit Western Washington with gusts as high as 60 mph, knocking out electricity to more than 150,000 customers.*

SEATTLE (AP) -- A November windstorm hit Western Washington with gusts as high as 60 mph, knocking out electricity to more than 150,000 customers.

Downed trees and power lines also disrupted traffic on several area highways. There were no immediate reports of injuries.

Late Monday night, Tacoma Power reported 54,000 customers without electricity. Puget Sound Energy reports 45,000 of its customers lost power. KOMO-TV says Peninsula Light Company reported 26,000 outages while Snohomish County PUD had more than 20,000 and Seattle City Light reported 17,000 customers in the dark.

National Weather Service meteorologist Jay Neher (Nare) says a 60 mph gust was reported near North Bend and a 57 mph gust near Anacortes. Seattle-Tacoma International Airport reported a top gust of 49 mph.



Tuesday, Nov. 16, 2010

## Gusty winds cut power to thousands in Washington

*Utility crews are repairing lines and restoring electricity to more than 200,000 customers who lost power in Washington in the Monday windstorm in which gusts hit 60 mph in places.*

SEATTLE, WA – Utility crews are repairing lines and restoring electricity to more than 200,000 customers who lost power in Washington in the Monday windstorm in which gusts hit 60 mph in places.

Some reported outages: Puget Sound Energy 90,000, Tacoma Power 54,000 outages, Snohomish County PUD 20,000 and Seattle City Light 17,000.

High winds also hit parts of Eastern Washington, and Avista reported outages Tuesday in the Spokane area.

Falling trees temporarily blocked some highways Monday, including Highway 20 in Skagit County, and Highway 508 in Lewis County. Highway 12 was blocked Tuesday morning near Pomeroy by downed power lines.

The National Weather Service says the breezy weather will continue through Wednesday in Western Washington.



A tree is seen toppled on a car at 112th and Peacock in Gig Harbor, Wash. on Monday, Nov. 15, 2010. Image courtesy of Twitter user @@abbigshmail.

## **Now this is November -- windstorm batters region**

By Scott Sistek

SEATTLE -- What seemed like an innocuous storm instead packed quite a wallop as strong winds rolled through Western Washington Monday.

Gusts were over 60 mph in some spots, knocking trees over, and cutting power to over 150,000 customers across the region.

The southbound lanes of Interstate 5 were briefly closed Monday evening at milepost 239 due to downed trees across the roadway.

And strong winds tore off the scaffolding of an apartment building in Seattle's Phinney Ridge neighborhood.

"I saw it started coming away from the building," said building owner Ron Bryan. "It came down very quickly. Within a half an hour, it went from being a concern to being in the street."

In Oso, a truck caught on fire when it came in contact with downed power lines after being battered by toppling trees near Ramstad Road and Highway 530 near Oso. The father and son who were inside the truck managed to escape without injuries.

In Seattle, 17,000 City Light customers were dark, with the largest outages reported in West Seattle and Rainier Valley, according to Seattle City Light (View Seattle power outage map).

Tacoma Power reported 54,000 out, while Puget Sound Energy says 45,000 of their customers were without power. Meanwhile, Snohomish County PUD says they had over 20,000 people in the dark in scattered outages through the county. Peninsula Light Company says 26,000 people are without power.

Grays Harbor PUD reported an outage impacting about 516 customers in the Oakville area while Mason Co. PUD had about 300-400 scattered outages.

The strongest gust so far was 61 mph in Oak Harbor. Here are some other gusts from the night:

Oak Harbor: 61 mph Port Angeles: 60 mph North Bend: 60 mph Anacortes: 57 mph Alki Beach Light: 53 mph Tacoma: 51 mph Port Townsend: 50 mph Seattle (Sea-Tac): 49 mph Gig Harbor: 49 mph Shelton: 49 mph 520 Bridge: 46 mph West Point/Magnolia: 46 mph Olympia: 45 mph Edgewater: 45 mph Boeing Field: 44 mph University of Washington: 41 mph Bellingham: 39 mph Everett: 38 Friday Harbor: 38 mph Renton: 37 mph

A high-wind warning was in effect through 1 a.m. for the greater areas of Port Angeles, Port Townsend, Oak Harbor, Anacortes, and all of Whidbey, Camano and San Juan Islands and western Skagit County.

A lesser Wind Advisory is in effect from Marysville south through Olympia and points east through 1 a.m. for gusts to 50 mph through 1 a.m.

Gusty winds will continue through the early morning hours then taper off.

Got any storm damage photos or video? We'd like to see it! You can submit it into our YouNews gallery.



Tuesday, Nov. 16, 2010

## Now this is November -- windstorm batters region

By KOMO-TV STAFF

SEATTLE -- Thousands of people were still in the dark Tuesday morning, hours after heavy winds battered Western Washington.

Monday night's storm brought wind gusts as high as 60 mph in some places, cutting power to more than 150,000 customers across the region.

Several school districts were forced to cancel or delay the start of classes because their buildings were still without power (see full school list).

By 7:30 a.m., Seattle City Light said it had about 1,300 customers still without power and hoped to have all service restored by noon. Tacoma Power reported 20,000 still without power and expected all customers to be back online today.

Snohomish PUD said 7,500 customers without power were scattered throughout the county, and 19 line crews were out working to restore service.

About 76,000 Puget Sound Energy customers are still without power, and the utility said it may be Thursday before all customers have power again.

PSE officials said crews are doing extensive damage repair work in Southeast King County around the Cascade Foothills, Hobart, Black Diamond and Renton. In Pierce County, Kapowsin, Darringer, Edgewood and Buckley were among the areas served by PSE that were hardest hit. And in Thurston County many customers in Olympia, Yelm and Rochester are still without power.

In addition to power outages, trees fell around the region, even forcing the southbound lanes of I-5 to be closed briefly Monday evening near milepost 239 while crews worked to clear trees from the interstate.

And strong winds tore off the scaffolding of an apartment building in Seattle's Phinney Ridge neighborhood.

"I saw it started coming away from the building," said building owner Ron Bryan. "It came down very quickly. Within a half an hour, it went from being a concern to being in the street."

In Oso, a truck caught fire when it came in contact with downed power lines after being battered by toppling trees near Ramstad Road and Highway 530 near Oso. The father and daughter who were inside the truck managed to escape without injuries.

The strongest gust recorded was 61 mph in Oak Harbor. Here are some other gusts from the night:

- Oak Harbor: 61 mph
- Port Angeles: 60 mph
- North Bend: 60 mph
- Anacortes: 57 mph
- Alki Beach Light: 53 mph
- Tacoma: 51 mph
- Port Townsend: 50 mph
- Seattle (Sea-Tac): 49 mph
- Gig Harbor: 49 mph
- Shelton: 49 mph
- 520 Bridge: 46 mph
- West Point/Magnolia: 46 mph
- Olympia: 45 mph
- Edgewater: 45 mph
- Boeing Field: 44 mph
- University of Washington: 41 mph
- Bellingham: 39 mph



Qualifying Storm Event  
November 15, 2010

Everett: 38 Friday  
Harbor: 38 mph  
Renton: 37 mph

Another storm is expected to move into the region on Wednesday, bringing wind to most of Western Washington, but we are not expecting a repeat of Monday night.

Cold air will invade the region this weekend, keeping daytime temperatures in the 30s for most of the greater Seattle area on Saturday and Sunday.

There is a chance of lowland snow in the Northwest Interior (Bellingham, Blaine, Mt. Vernon) starting Friday night. But by the time the cold air makes it to Everett, Seattle, and Tacoma, the atmosphere will likely be too dry to give those areas anything more than a few flurries or a light mix of rain/snow showers in the overnight hours.

Have any storm damage photos or video? We'd like to see it! You can submit it into our YouNews gallery.



Tuesday, Nov. 16, 2010

## Gusty winds cut power to thousands in Washington

By THE ASSOCIATED PRESS

SEATTLE -- Utility crews are repairing lines and restoring electricity to more than 200,000 customers who lost power in Washington in the Monday windstorm in which gusts hit 60 mph in places.

Some reported outages: Puget Sound Energy 90,000, Tacoma Power 54,000 outages, Snohomish County PUD 20,000 and Seattle City Light 17,000.

High winds also hit parts of Eastern Washington, and Avista reported outages Tuesday in the Spokane area.

Falling trees temporarily blocked some highways Monday, including Highway 20 in Skagit County, and Highway 508 in Lewis County. Highway 12 was blocked Tuesday morning near Pomeroy by downed power lines.

The National Weather Service says the breezy weather will continue through Wednesday in Western Washington.

## Sky Valley Chronicle

Tuesday, Nov. 16, 2010

### WINDS TAKE DOWN POWER LINES IN WESTERN WASH.

(REGIONAL) -- It was one blustery night Monday in Western Washington, with winds downing trees and sailing branches about to the tune of about 100,000 residences and businesses losing power in the region.

Some of the outages included: Snohomish County PUD, some 20,000 customers lost power. In Tacoma about 54,000 customers were in the dark for a time and Puget Sound Energy had about 45,000 locations where power was out.

The winds also caused waves to slap up against the side of the SR 520 Bridge in Montlake during the evening commute, causing some major traffic backups on the bridge.

Qualifying Storm Event  
November 15, 2010

The forecast calls for more rain and wind for the rest of the week in Western Washington.



Monday, Nov. 15, 2010

## Winds cut power, block roads across Puget Sound

*Strong winds were causing scattered power outages and blocked roads throughout the Puget Sound area Monday night.*

By [Jill Kimball](#), Seattle Times staff reporter

Strong winds caused scattered power outages and blocked roads throughout the Puget Sound area Monday night.

Some 17,000 customers of Seattle City Light lost power, the utility said, with some of the largest outages in West Seattle and Rainier Valley.

National Weather Service meteorologist Doug McDonnal said there were also power outages in Tacoma. Details were not immediately available because Tacoma Public Utilities' phone lines were jammed. But the webcam on the state Department of Transportation's website indicated numerous outages, including around the Narrows Bridge.

In the Seattle area, winds were 20 to 30 miles per hour with gusts about 35 to 40 mph, McDonnal said.

It's not quite windstorm status, McDonnal said, but with water-heavy leaves blowing from trees, wires could easily be knocked down, putting electrical power in peril. He expected the strongest winds to be over by 1 a.m.

In Lake City, downed electrical wires caused outages around 8:30 p.m., according to the Seattle Fire Department. There are also power outages in Auburn and Kent. Crews were still assessing how many people lost power.

Winds were stronger on Whidbey Island and the San Juan Islands, at 35 to 40 mph with gusts reaching 60 mph.

In Eastern Washington, sustained winds of 30 to 40 mph with gusts of 55 mph were expected throughout the Wenatchee Valley south of Chelan Monday night, according to the Associated Press. East Wenatchee possibly would catch the brunt of the windstorm, said Jeffrey Cote, Weather Service forecaster. Debris on Interstate 5 around mile post 99 was blocking some lanes, as is a tree on eastbound State Route 302 around the 118th Avenue Northwest exit in Gig Harbor, according to the Washington State [Patrol](#). In Eastern Washington, sustained winds of 30 to 40 mph with gusts of 55 mph were expected throughout the Wenatchee Valley south of Chelan Monday night, with East Wenatchee possibly catching catch the brunt of the wind storm, said Jeffrey Cote, Weather Service forecaster. "Anything that's not tied down is likely to blow around," he said.

Material from The Associated Press was included in this report.





Monday, Nov. 15, 2010

## Windstorm darkens much of South Sound

BY STACIA GLENN; STAFF WRITER

High winds swept through Western Washington on Monday night, knocking over trees and power lines and cutting power to hundreds of thousands of people.

Within an hour of lightning flashing across the night sky and winds gusting above 40 mph, Tacoma firefighters had responded to more than 30 calls. Trees crashed into houses, trapping at least one family.

Heavy limbs tumbled onto cars. The department received a report of a boathouse that had broken loose.

Blown transformers and downed power lines started several tiny fires in trees and at least one car. Roads were blocked by falling debris, and some motorists had to drive on the wrong side of the road to get through.

A Tacoma Power spokeswoman said at least 54,000 customers were plunged into darkness throughout Tacoma, Lakewood and Frederickson, but that the number was likely much higher.

"I can't even get a customer count because more and more keep coming down," said spokeswoman Chris Gleason.

The widespread power outages forced the city to use backup generators. While dispatch centers were out of commission, 911 operators remained available to take calls.

"We're still able to conduct business, but because of the storm it's more complicated," said Tacoma Fire Department spokesman Joe Meinecke.

Emergency responders worked in afrenzy, trying to juggle multiple calls and stretch resources to respond to all the reported mayhem.

No major injuries were reported in Pierce County.

The storm was expected to begin tapering off early this morning, but another front is supposed to move in Wednesday night, bringing back light rain and strong winds.

"These aren't exceptionally high winds, but it is certainly windy," said Doug McDonal, a meteorologist with the National Weather Service.

The highest wind gust was reported at 47 mph near Joint Base Lewis-McChord.