

Exh. TJH-2
Docket UE-23____
Witness: Timothy J. Hemstreet

**BEFORE THE WASHINGTON
UTILITIES AND TRANSPORTATION COMMISSION**

WASHINGTON UTILITIES AND
TRANSPORTATION COMMISSION,

Complainant,

v.

PACIFICORP dba
PACIFIC POWER & LIGHT COMPANY

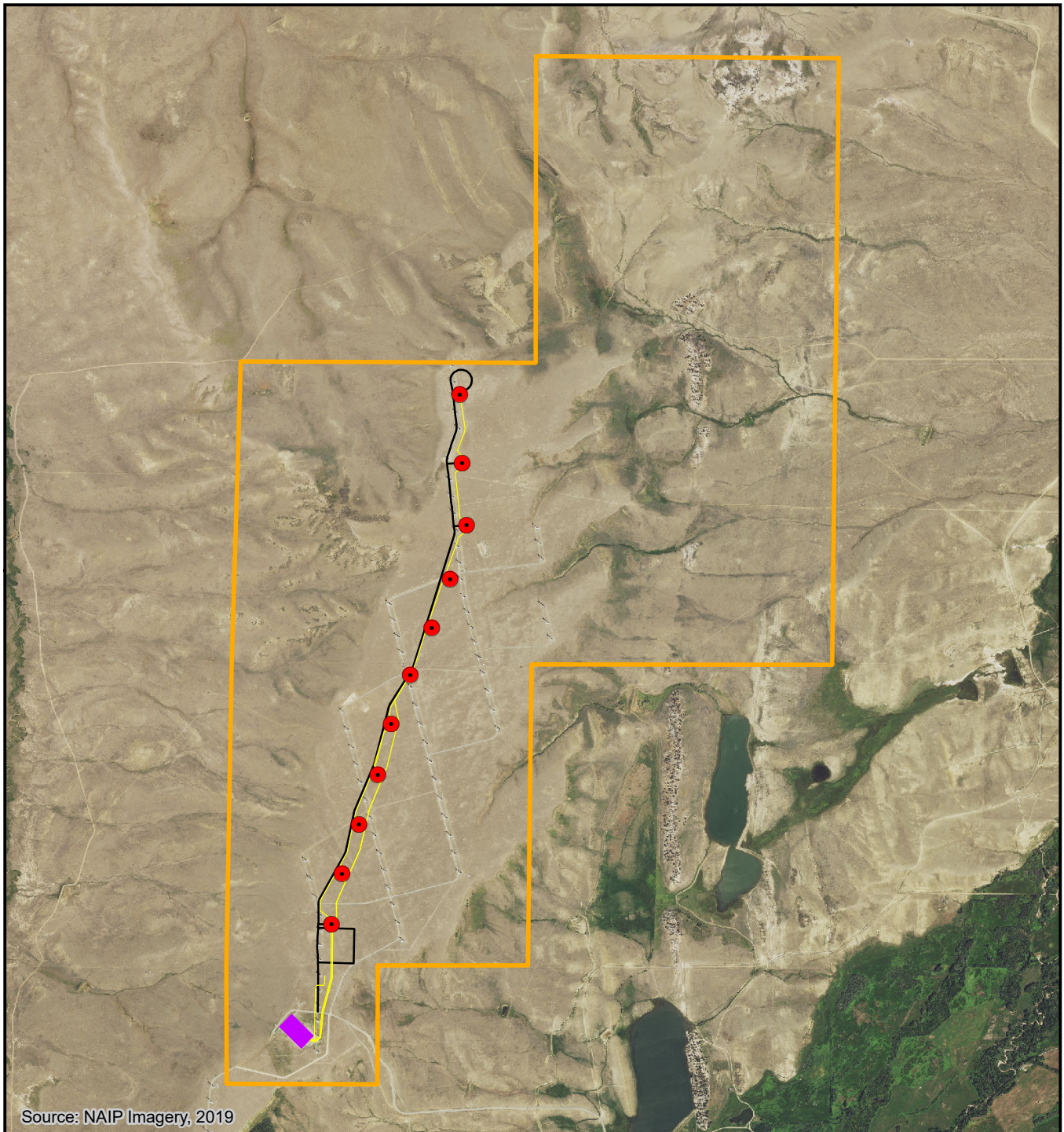
Respondent.

Docket UE-23____

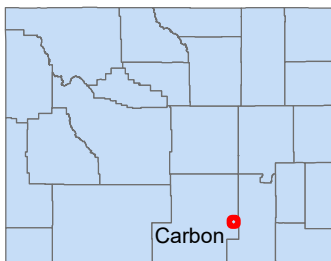
**PACIFICORP
EXHIBIT OF TIMOTHY J. HEMSTREET**

Foote Creek II-IV Site Layout

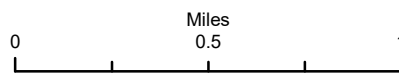
March 2023



Source: NAIP Imagery, 2019



-  Lease Boundary
-  Foote Creek II-IV Turbine
-  Electrical Collection Line
-  Access Road
-  Laydown Area
-  Substation



Foote Creek II-IV

Repowering

Project Location



MARTIN & NICHOLSON
ENVIRONMENTAL CONSULTANTS