



2007
Qualifying Storm Events

November 12, 2007

Table of Contents

Table of Contents	2
Event Description	3
Date of event	3
Event Type.....	3
Service Areas Affected	3
Number of Customers Affected.....	3
Summary of System Impacts	3
Mobilization Summary	3
Major Event Day – Qualification.....	5
Qualified Events - 2007	5
Current Event – Calculation Detail	5
Cumulative list of events that have qualified	5
Event Restoration – Cost Summary	6
Restoration Cost Detail by Qualifying Event.....	6
YTD Storm Restoration Cost Detail – Through November 12, 2007	6
Detail Documents	7
Restoration Cost Detail – Current Event	8
IEEE-1366 - Detailed List of Distribution Circuits with Outages.....	9
Terms, Codes and Definitions Used on Detail Reports.....	16
Media Coverage	18

Event Description

Date of event

November 12, 2007

Event Type

Wind storm. This storm system had strong winds on both, the leading and trailing edges of this front.

Service Areas Affected

The northern and southern portions of PSE's service area experienced the most significant damage. Kitsap and King Counties were also impacted, however to a lesser degree.

Number of Customers Affected

More than 90,700 electric service customers lost power during this event.

Summary of System Impacts

Total Number of Outages	710
Distribution Circuits Totally Out	16
Distribution Circuits Partially Out	694

Transmission Circuits Affected	6
Substations Totally Off-line	2

Mobilization Summary

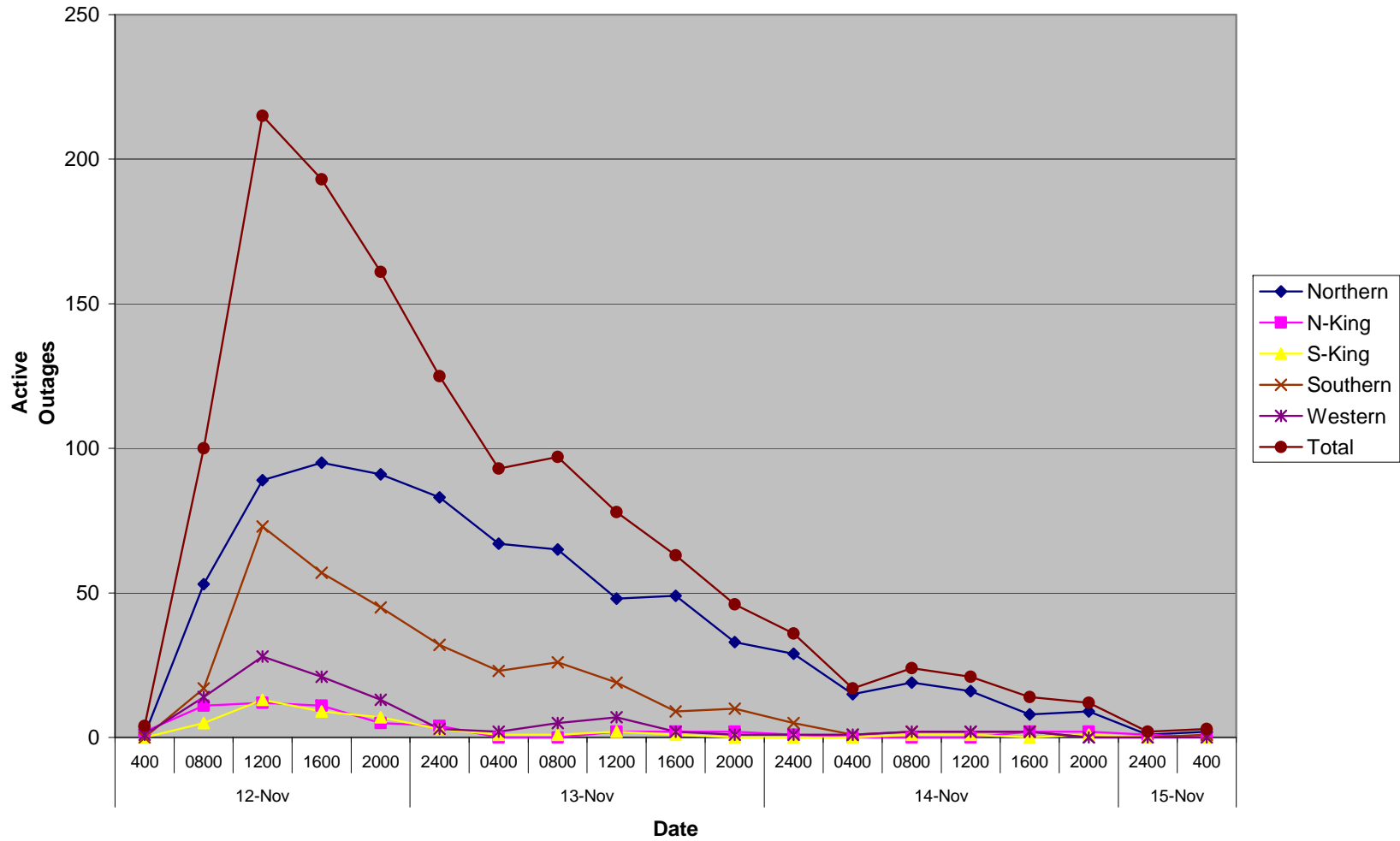
Operating bases

Base	Date Opened	Time Opened	Date Closed	Time Closed
Whatcom	11/12	05:30	11/14	22:30
Skagit/Island	11/12	05:30	11/13	09:00
N-King	11/12	05:30	11/12	20:00
Kitsap	11/12	05:30	11/12	23:00
Thurston	11/12	08:30	11/13	20:00
Pierce	11/12	08:30	11/12	20:30
S-King	11/12	10:00	11/12	19:00

Emergency Operations Center

EOC	Date Opened	Time Opened	Date Closed	Time Closed
	11/12	08:00	11/13	23:00

Outage Events - November 12, 2007



Major Event Day – Qualification

IEEE 1366 Method

IEEE 1366 was established to present a set of terms and definitions which can be used to foster uniformity in the development of distribution service reliability indices, to identify factors which affect the indices, and to aid in consistent reporting practices among utilities. Also, it provides guidance for new personnel in the reliability area, and tools for internal as well as external comparisons. The Major Event Day definition was created as part of IEEE 1366 to allow for consistent calculation of reliability metrics between utilities, and enable more valid comparisons with other utility reliability metrics.

IEEE Major Event Day Calculation (2.5 BETA METHOD)

1. A threshold on daily SAIDI is computed once a year, following year end.
2. Assemble the 5 most recent years of historical values of SAIDI/day.
3. Discard any days in the data set that has a SAIDI/day of zero.
4. Find the natural logarithm of each value in the data set.
5. Compute the average Alpha and the standard deviation (Beta) of the natural logarithms computed in step 3.
6. Compute the threshold Tmed where $Tmed = \exp(\text{Alpha} + 2.5 * \text{Beta})$
7. Any day in the next year with SAIDI > Tmed is a major event day.

Puget Sound Energy's Major Event Threshold for 2007: 6.87 Minutes

Qualified Events - 2007

Current Event – Calculation Detail

Event Date	Total Customer Minutes	Average Customer Count	Daily SAIDI – Customer Minutes /Customer Count
11/12/2007	42,523,412	1,059,861	40.12

Cumulative list of events that have qualified

Date(s)	T-med Score	O&M – Deferrable Accumulation
1/2/2007	8.41	\$1,339,165
1/5/2007	11.62	\$2,395,508
1/9/2007	23.66	\$7,000,000
10/18/2007	57.28	\$0
11/12/2007	40.12	\$0

Event Restoration – Cost Summary

Restoration Cost Detail by Qualifying Event

Date	Qualified Events Deferred Account	Capital	C&D Costs Recoverable from Direct Billings (Costs Not Yet Billed)	O&M – Not Deferrable	O&M – Deferrable Accumulation	Total O&M	Total
1/2/2007	\$0	\$56,550	\$0	\$38,044	\$1,338,765	\$1,376,809	\$1,433,359
1/5/2007	\$0	\$111,336	\$0	\$67,273	\$2,328,235	\$2,395,508	\$2,506,844
1/9/2007	\$316,014	\$171,146	\$0	\$113,115	\$3,333,000	\$3,446,115	\$3,933,275
10/18/2007	\$5,081,358	\$224,262	\$0	\$272,937	\$0	\$272,937	\$5,578,557
11/12/2007	\$4,779,888	\$311,867	\$0	\$192,630	\$0	\$192,630	\$5,284,385

YTD Storm Restoration Cost Detail – Through November 12, 2007

Qualified Events Deferred Account	Capital	C&D Costs Recoverable from Direct Billings (Costs Not Yet Billed)	O&M – Not Deferrable	O&M Deferrable Accumulation	Total O&M	Total
\$10,177,260	\$875,160	\$0	\$683,999	\$7,000,000	\$7,683,999	\$18,736,420

Qualifying Storm Event
November 12, 2007

Detail Documents

Restoration Cost Detail – Current Event

Detailed List of Distribution Circuits with Outages

Terms, Codes & Definitions Used on Detail Reports

Newsprint Media Coverage

Restoration Cost Detail – Current Event

Puget Sound Energy							
November 12, 2007 Storm Damage Repair Costs							
	Qualifying Events Deferred Account	Capital	C&D Recoverable from Direct Billings (Costs Not Yet Billed)	O&M - Not Deferrable	O&M - Deferrable Accumulation	Total O&M	Total
Labor							
ST					\$ 39,377	\$39,377	\$39,377
OT					\$ 289,930	\$289,930	\$289,930
Total Labor	\$0	\$0	\$0	\$0	\$ 329,307	\$329,307	\$329,307
Labor OH					\$ 117,814	\$117,814	\$117,814
Materials		\$104,612.46			\$ 177,277	\$177,277	\$281,890
Contractors		\$192,464.56			\$ 4,061,419	\$4,061,419	\$4,253,883
Other Direct Charges					\$ 23,511	\$23,511	\$23,511
Fleet					\$ 26,179.92	\$26,180	\$26,180
Other Assessments		\$ 14,789.57		\$192,630	\$ 44,380	\$237,010	\$251,800
Deferred Expenses	\$4,779,888				\$ (4,779,888)	(\$4,779,888)	\$0
	<u>\$4,779,888</u>	<u>\$311,867</u>	<u>\$0</u>	<u>\$192,630</u>	<u>\$0</u>	<u>\$192,630</u>	<u>\$5,284,385</u>

IEEE-1366 - Detailed List of Distribution Circuits with Outages

Notification	Date	Time	Circuit	Area	Cause	Equipment	Cust Outs	Cust Mins
E931919331	11/12/2007	0:03:00	PHA-16	EBE	EF	OSV	10	919
E708788780	11/12/2007	1:07:00	CPV-15	EAD	TF	OCO	5	142
E547550001	11/12/2007	1:48:00	BRW-15	EAC	TO	OCO	8	9,792
E721431313	11/12/2007	2:28:00	DIS-13	ECF	EF	OTF	5	683
E633148023	11/12/2007	2:42:00	SOM-15	EBE	EF	UPC	6	876
10780531	11/12/2007	3:49:00	SUM-21	EAC	EF	OCO	10	1,441
E454917890	11/12/2007	4:01:00	FRG-25	ECC	TO	OCO	1,037	145,128
E964569864	11/12/2007	4:10:00	SPA-16	ECA	TO	OCO	1,831	139,156
E287298354	11/12/2007	4:16:00	UHL-21	EBD	TO	OCO	4,269	1,271,963
E594274294	11/12/2007	4:19:00	OSC-22	EBI	TF	OCO	1,244	84,074
E486052471	11/12/2007	4:20:00	LTA-17	ECA	EF	CDH	222	50,309
E823693565	11/12/2007	4:22:00	SWD-11	ECE	TO	OFC	21	3,801
E564920330	11/12/2007	4:22:00	PIP-23	EBI	TF	OFU	22	2,640
E024018545	11/12/2007	4:29:00	PAT-15	ECC	UN	OCO	3	2,019
E009172062	11/12/2007	4:33:00	PIN-26	EBD	TO	OCO	80	8,160
E798494961	11/12/2007	4:34:00	FAL-15	EBF	TO		50	29,050
E898288716	11/12/2007	4:35:00	LLT-17	EBD	EF		5	1,850
E106498488	11/12/2007	4:35:00	QUI-25	ECF	TO	OFC	200	25,000
E703188219	11/12/2007	4:35:00	HKX-16	EAC	TO	OFC	55	8,140
E993092879	11/12/2007	4:36:00	FRA-15	ECD	TO	OCO	267	43,788
E772049573	11/12/2007	4:44:00	LYN-24	EAA	TO	OCO	786	122,616
E262035273	11/12/2007	4:46:00	RHO-16	ECA	TO	OTR	6	3,324
E203941061	11/12/2007	4:46:00	HOB-15	EBI	TF	OFU	19	1,577
E486516047	11/12/2007	4:54:00	COT-15	EBD	TO	OCO	1,227	143,559
E638926579	11/12/2007	4:54:00	MIR-13	EBF	TO	OCO	1	336
E201514789	11/12/2007	4:57:00	LGY-15	EAD	TO	OCO	383	45,960
E138962079	11/12/2007	4:59:00	LTA-18	ECA	TO	OPO	10	6,910
E382444387	11/12/2007	5:01:00	KAP-13	ECA	TO	OPO	4	4,856
E152795086	11/12/2007	5:06:00	BRO-16	EAD	TO	OCO	1,027	90,273
E460807351	11/12/2007	5:11:00	RAI-13	ECC	TO	OCO	228	399,912
E277491639	11/12/2007	5:12:00	LON-22	ECC	TF	OCO	93	63,054
E996467006	11/12/2007	5:13:00	BIG-15	EAC	TO	OCO	22	8,668
E044509986	11/12/2007	5:17:00	LTA-18	ECA	TO	OPO	15	13,605
E311920586	11/12/2007	5:19:00	RHO-15	ECA	TF	OCO	15	3,840
E072524836	11/12/2007	5:19:00	ALG-15	EAC	EF	OCO	12	4,572
E519861032	11/12/2007	5:22:00	FAL-13	EBF	TO	OCO	38	27,474
E054537433	11/12/2007	5:23:00	SNQ-13	EBF	EF		11	8,327
E592666556	11/12/2007	5:25:00	KAP-15	ECA	TF	OJU	100	44,000
E152424623	11/12/2007	5:28:00	MCK-16	EAA	TO	OCO	936	628,992
E458719390	11/12/2007	5:29:00	SEH-16	EAA	TF	OCO	236	233,876
E710415353	11/12/2007	5:32:00	SOO-25	EBI	TF	OFU	25	2,575
E521450074	11/12/2007	5:32:00	LEA-17	EBI	TF	OCO	425	42,500
E776975827	11/12/2007	5:33:00	BCH-13	EAA	TF	OPO	8	14,616
E113142349	11/12/2007	5:33:00	MCK-15	EAA	TF	OCO	393	326,976
E199259139	11/12/2007	5:37:00	WAU-22	EBI	TF	OCO	1,663	630,776
E609297341	11/12/2007	5:38:00	VAS-22	EBL	TO	OFU	5	440
E552420978	11/12/2007	5:39:00	CPV-15	EAD	TO	OCO	8	7,208
E949042678	11/12/2007	5:44:00	MIR-15	EBF	TO	OCO	4	684
E373336839	11/12/2007	5:48:00	DIS-13	ECF	TO	OFC	408	97,536
E338550444	11/12/2007	5:54:00	LYO-15	EBJ	TF	OCO	16	7,056
E142018611	11/12/2007	5:54:00	QUI-25	ECF	TO	OCO	50	44,500

Qualifying Storm Event
November 12, 2007

Notification	Date	Time	Circuit	Area	Cause	Equipment	Cust Outs	Cust Mins
E934594482	11/12/2007	6:00:00	FLD-12	EAD	TO	OCO	222	63,714
E691763521	11/12/2007	6:01:00	BCH-12	EAA	TF	OCO	106	212,954
E488740945	11/12/2007	6:02:00	ORT-23	ECA	TO	OCO	146	104,828
E841070762	11/12/2007	6:04:00	CLV-16	EAD	EF	OCO	113	75,597
E587726204	11/12/2007	6:07:00	BCH-16	EAA	TO	OCO	49	37,877
E579344672	11/12/2007	6:10:00	PTR-16	EAA	TF	OCO	728	937,840
E539308003	11/12/2007	6:11:00	WIS-12	EBF	EF		3	1,320
E858263262	11/12/2007	6:11:00	LAB-25	EAA	TF	OCR	128	250,112
E832185313	11/12/2007	6:15:00	HOB-16	EBI	EF	UPC	6	6,566
E688655369	11/12/2007	6:16:00	EDG-16	ECA	TO	OCO	9	936
E952976976	11/12/2007	6:16:00	SUM-21	EAC	TO	OCO	1,500	133,500
E916052690	11/12/2007	6:17:00	DIS-12	ECF	TF	OCO	49	17,297
E516872109	11/12/2007	6:18:00	MCK-12	EAA	TF	OCO	288	323,136
E518746754	11/12/2007	6:25:00	WOB-25	EAA	TF	OCO	1,317	332,405
E078886654	11/12/2007	6:29:00	HAS-15	ECF	TO	CDH	60	48,985
E672746485	11/12/2007	6:30:00	VIK-23	EAA	TO	OCO	121	202,070
E108832503	11/12/2007	6:30:00	BRI-17	EAA	TF	OSV	42	66,780
E225337064	11/12/2007	6:32:00	ANA-15	EAC	TO	OCO	43	30,229
E982422144	11/12/2007	6:33:00	CUS-16	EAA	TO	GAR	212	272,844
E213568869	11/12/2007	6:35:00	BLA-12	EAA	TF	OCO	146	283,970
E947519212	11/12/2007	6:38:00	IRO-17	ECF	TO	OPO	1,377	562,584
E061282095	11/12/2007	6:39:00	SUM-21	EAC	TO	OCO	1,703	-1
E781921931	11/12/2007	6:40:00	QUI-25	ECF	TO	OCO	151	129,407
E149568908	11/12/2007	6:46:00	BRO-16	EAD	TO	OCO	1,027	156,104
E826368650	11/12/2007	6:47:00	WOB-23	EAA	TO	OCO	28	44,884
E959886229	11/12/2007	6:47:00	HOB-15	EBI	TF	OTR	13	2,769
E264404093	11/12/2007	6:48:00	BLA-13	EAA	TO	OTR	600	331,200
E519451508	11/12/2007	6:49:00	CPV-13	EAD	TO	OCO	560	50,400
E736536508	11/12/2007	6:53:00	HAP-16	EAA	TO	OCR	2,071	1,026,797
E475781801	11/12/2007	6:57:00	PET-16	EAC	TO	OFC	14	2,562
E117637752	11/12/2007	7:03:00	NUG-26	EAA	TF	OTR	115	375,475
E457027098	11/12/2007	7:10:00	QUI-26	ECF	EF	OCO	274	25,482
E916951619	11/12/2007	7:11:00	PGA-13	ECE	TO	OCO	12	5,268
E286360235	11/12/2007	7:12:00	KAP-16	ECA	TO	OCO	5	3,090
E549896266	11/12/2007	7:14:00	CAR-15	EAA	TO	OPO	20	25,820
E169555278	11/12/2007	7:17:00	SWA-16	EAD	TF	OCO	1	67
E733944597	11/12/2007	7:17:00	IRO-13	ECF	TO	OPO	41	11,603
E668186667	11/12/2007	7:21:00	WOL-25	ECC	TF	OCO	29	2,552
E869935525	11/12/2007	7:21:00	SLA-16	EAA	TO	OCO	40	64,000
E150602514	11/12/2007	7:23:00	SLA-17	EAA	TO	OCO	24	32,808
E213764077	11/12/2007	7:23:00	BLS-23	EAA	TF	OCO	1,977	201,654
E751469675	11/12/2007	7:24:00	HAS-13	ECF	TO	OCO	136	81,056
E870533171	11/12/2007	7:25:00	CPV-12	EAD	EF	OCO	2	93
E752594917	11/12/2007	7:25:00	SWA-12	EAD	TO	OCO	20	6,700
E723129736	11/12/2007	7:26:00	FRA-15	ECD	TO	OCO	37	13,098
E996198333	11/12/2007	7:27:00	HAS-12	ECF	TO	OCO	101	55,853
E589514300	11/12/2007	7:29:00	ROE-17	EAA	TF	OCO	21	34,041
E829774397	11/12/2007	7:31:00	BLS-22	EAA	EF	OTF	3	3,237
E554665928	11/12/2007	7:31:00	BRW-16	EAC	TO	OFC	1	104
E847771887	11/12/2007	7:31:00	NLM-15	EAC	TO	OCO	77	32,417
E814037090	11/12/2007	7:32:00	FRA-13	ECD	TO	OFC	80	19,840
E614372285	11/12/2007	7:32:00	LLS-17	EAA	TO	OCR	370	448,810
E053556684	11/12/2007	7:33:00	VWY-15	EAA	TO	OCO	107	161,249
E119131597	11/12/2007	7:33:00	LAC-17	ECC	TF	OCO	200	50,600
E112160803	11/12/2007	7:35:00	VWY-13	EAA	TO	OPO	215	676,175

Qualifying Storm Event
November 12, 2007

Notification	Date	Time	Circuit	Area	Cause	Equipment	Cust Outs	Cust Mins
E122079357	11/12/2007	7:36:00	IRO-15	ECF	TO	OTR	387	239,553
E184820355	11/12/2007	7:41:00	HAN-12	EAA	TF	OCO	92	182,528
E595891074	11/12/2007	7:42:00	GWR-16	EBI	TF	OCO	13	2,080
E282033359	11/12/2007	7:42:00	KEN-12	EAA	TF	OCO	253	467,544
E923616277	11/12/2007	7:44:00	FNW-17	ECD	TO	OCO	1	137
E723001714	11/12/2007	7:44:00	KAP-16	ECA	EF	OTR	5	2,480
E376964670	11/12/2007	7:48:00	OSC-22	EBI	TO	OCO	7	2,289
E171979052	11/12/2007	7:48:00	LYN-23	EAA	TF	OCO	74	125,208
E652813602	11/12/2007	7:51:00	SCH-15	EAA	TF	OPO	525	502,925
E583315176	11/12/2007	7:56:00	COT-13	EBD	TO	OCO	2	98
E303736796	11/12/2007	7:58:00	HKX-13	EAC	TO	OCO	28	8,876
E526033296	11/12/2007	7:58:00	LAB-26	EAA	TF	OCO	74	164,428
E292991127	11/12/2007	7:58:00	ELD-23	ECC	TF	OCO	79	62,805
E326627157	11/12/2007	7:59:00	BLU-17	ECC	TF	OPO	61	94,794
E417633685	11/12/2007	8:00:00	HAN-15	EAA	TF	OCO	87	191,400
E887284826	11/12/2007	8:01:00	PTL-13	ECF	TO	CDH	7	6,384
E170930029	11/12/2007	8:01:00	IRO-16	ECF	TF	OCO	4	1,076
E633160424	11/12/2007	8:01:00	AIR-22	ECC	TO	OCO	20	6,760
E937062214	11/12/2007	8:02:00	VWY-12	EAA	TO	OCO	162	398,316
E789741700	11/12/2007	8:03:00	RAI-14	ECC	TF	OCO	22	30,294
E955648033	11/12/2007	8:06:00	BAK-25	EAA	TO	OCO	211	159,516
E571879542	11/12/2007	8:06:00	PLY-15	EAA	TF	OTF	82	136,038
E535136188	11/12/2007	8:07:00	CAR-12	EAA	TO	OCR	63	74,214
E168873766	11/12/2007	8:08:00	PLY-16	EAA	TF	OTF	4	1,528
E231625909	11/12/2007	8:08:00	FRG-25	ECC	TO	OCO	1,064	554,344
E257737049	11/12/2007	8:08:00	HAN-16	EAA	TF	OCR	980	654,710
E587106875	11/12/2007	8:08:00	LYN-24	EAA	TO	OPO	781	262,642
E298705557	11/12/2007	8:09:00	BLU-16	ECC	TO	OPO	1,602	1,907,982
E306607062	11/12/2007	8:10:00	ROC-15	ECC	TF	OTF	2	980
E355723126	11/12/2007	8:14:00	CRE-12	EAD	TF	OCO	3	1,935
E212112706	11/12/2007	8:15:00	VIS-26	EAA	TF	OCO	276	401,580
E694787779	11/12/2007	8:18:00	LYN-13	EAA	TF	OCO	136	62,832
E151056743	11/12/2007	8:19:00	AIR-23	ECC	TO	OPO	1,301	1,850,022
E952977113	11/12/2007	8:20:00	BAK-25	EAA	TF	OCR	250	320,000
E394118167	11/12/2007	8:20:00	LYN-26	EAA	TF	OCR	1	3,110
E879143339	11/12/2007	8:21:00	BLU-13	ECC	TO	OCO	140	239,680
E514785770	11/12/2007	8:23:00	ALG-12	EAC	TO	OCO	14	1,218
E489518703	11/12/2007	8:23:00	BAK-22	EAA	TO	OCO	26	26,702
E312018327	11/12/2007	8:24:00	LLS-15	EAA	TO	OCO	81	83,106
E963033610	11/12/2007	8:25:00	FLD-13	EAD	TO	OCO	4	732
E575529590	11/12/2007	8:25:00	LYN-14	EAA	TF		602	541,330
E712742811	11/12/2007	8:25:00	SCH-12	EAA	TF		7	11,585
E792221483	11/12/2007	8:28:00	LON-23	ECC	TO	OPO	1,570	1,321,940
E924357888	11/12/2007	8:28:00	RAI-12	ECC	TO	OCO	871	975,520
E245568993	11/12/2007	8:28:00	CAR-16	EAA	TF	OCO	75	117,150
E438824102	11/12/2007	8:28:00	QUI-25	ECF	TO	CDH	89	60,698
E654366041	11/12/2007	8:29:00	ZEN-26	EBJ	EF	PTF	3	467
E374389630	11/12/2007	8:29:00	MAN-15	ECD	TO	OCO	5	200
E436009430	11/12/2007	8:31:00	CUS-13	EAA	TF	OCO	420	213,780
E793763306	11/12/2007	8:31:00	HLC-23	EAD	EF	OCO	14	8,526
E676302954	11/12/2007	8:32:00	SCH-13	EAA	TF	OPO	1,480	1,556,840
E034063876	11/12/2007	8:32:00	NUG-25	EAA	TF	OPO	529	390,999
E272336866	11/12/2007	8:32:00	BRI-15	EAA	TO	OCO	38	52,364
E974523860	11/12/2007	8:33:00	BRI-14	EAA	TF	OTR	264	482,328
E927863144	11/12/2007	8:34:00	VIS-25	EAA	TF	OTF	9	9,954

Qualifying Storm Event
November 12, 2007

Notification	Date	Time	Circuit	Area	Cause	Equipment	Cust Outs	Cust Mins
E013419281	11/12/2007	8:34:00	SLA-15	EAA	TF	OCO	192	324,672
E608640077	11/12/2007	8:35:00	GLA-12	EAA	TF	OCR	1,007	1,656,515
E525946436	11/12/2007	8:38:00	CHR-22	ECE	EF	OIN	1	204
E402511741	11/12/2007	8:39:00	KEN-13	EAA	TF	OCO	42	90,972
E683296858	11/12/2007	8:39:00	BUC-16	ECA	TF	OFU	33	13,068
E560679443	11/12/2007	8:39:00	HAN-13	EAA	TF	OCO	45	97,470
E277853672	11/12/2007	8:39:00	FRG-26	ECC	TO		20	28,020
E240313612	11/12/2007	8:41:00	BAK-23	EAA	TF	OSV	77	6,083
E438886858	11/12/2007	8:43:00	CAP-15	ECC	TF		5	1,115
E490333110	11/12/2007	8:45:00	SST-17	EAA	EF	OTF	33	48,015
E104570587	11/12/2007	8:49:00	PAT-13	ECC	TF	OCO	38	12,350
E715127037	11/12/2007	8:49:00	CPV-13	EAD	EF	OTF	1	55
E475202623	11/12/2007	8:50:00	OBY-17	ECC	TF	OCO	1	644
E739409679	11/12/2007	8:53:00	WLK-15	ECA		CDH	4	3,764
E924420653	11/12/2007	8:53:00	SWI-15	ECC	TO		47	45,449
E001898864	11/12/2007	8:53:00	YEL-25	ECC	TF		1,490	926,780
E489766774	11/12/2007	8:54:00	HAW-12	ECC	TO	OCO	2,886	25,974
E988123883	11/12/2007	8:54:00	HEM-15	ECA	TF	OCO	29	1,479
E843111802	11/12/2007	8:54:00	LUH-15	ECC	TO	OCO	3,327	986,174
E368668401	11/12/2007	8:54:00	VIS-22	EAA	TO	OCO	93	135,873
E959549721	11/12/2007	8:55:00	GRI-13	ECC	TF	OSV	3	2,265
E688270652	11/12/2007	8:57:00	VIS-23	EAA	TO	OCO	1	1,483
E770270426	11/12/2007	8:58:00	LUH-17	ECC	TF		48	37,776
E649917223	11/12/2007	8:58:00	LUH-14	ECC	TF		2,981	1,347,412
E194077566	11/12/2007	9:01:00	ELD-25	ECC	TF		67	65,928
E360250266	11/12/2007	9:01:00	RAI-11	ECC	TO		139	203,496
E856620495	11/12/2007	9:02:00	ELD-27	ECC	TF	OCO	531	319,131
E379903928	11/12/2007	9:03:00	VIK-25	EAA	TO	OTR	87	84,564
E827796188	11/12/2007	9:04:00	HAP-13	EAA	TO	OCO	20	4,120
E034046582	11/12/2007	9:04:00	WLS-16	EAC	TO	OFC	1	130
E023302737	11/12/2007	9:05:00	SWI-13	ECC	TF	OSV	1	570
E970492194	11/12/2007	9:06:00	PET-12	EAC	TO	OJU	4	1,336
E205568298	11/12/2007	9:08:00	SIN-25	ECD	TO	CDH	4	1,028
E701874573	11/12/2007	9:13:00	TAN-16	ECC	TF		1,080	413,640
E333464871	11/12/2007	9:13:00	TAN-13	ECC	TF		1,000	437,000
E852370510	11/12/2007	9:15:00	TAN-15	ECC	TO		1,134	447,930
E163781075	11/12/2007	9:16:00	ORT-22	ECA		CDH	209	159,676
E552792338	11/12/2007	9:16:00	MKI-17	ECC	TO		255	64,260
E790113502	11/12/2007	9:17:00	YEL-27	ECC	TF		1,723	737,444
E641100587	11/12/2007	9:21:00	EDG-13	ECA		CDH	30	12,870
E716360079	11/12/2007	9:24:00	LYN-17	EAA	TF	OCO	32	50,080
E136690986	11/12/2007	9:27:00	OLD-23	EAA	TO	OTF	21	29,673
E454545752	11/12/2007	9:28:00	BIG-12	EAC	TO	OCO	10	4,470
E346116951	11/12/2007	9:31:00	BON-13	ECA		OFC	50	11,950
E337729267	11/12/2007	9:32:00	MOT-15	ECC	TF		5	8,170
E138820350	11/12/2007	9:35:00	BON-17	ECA		OTR	4	1,360
E270884415	11/12/2007	9:36:00	WLK-15	ECA	TF	OCO	26	8,814
E902937989	11/12/2007	9:38:00	CUS-15	EAA	TO	OPO	3	3,396
E752845940	11/12/2007	9:38:00	QUI-26	ECF	TF	OFC	3	1,533
E487920373	11/12/2007	9:41:00	WLK-15	ECA	TF	OCO	17	5,151
E645024177	11/12/2007	9:42:00	KAP-16	ECA		CDH	65	18,720
E784613109	11/12/2007	9:45:00	LAC-13	ECC	TF		3,170	998,550
E210079742	11/12/2007	9:46:00	PLG-17	ECC	TO		164	168,756
E922668875	11/12/2007	9:47:00	BUC-26	ECA	TO	OCO	1	258
E166273192	11/12/2007	9:47:00	GRV-12	ECA	TF	OCO	849	61,977

Qualifying Storm Event
November 12, 2007

Notification	Date	Time	Circuit	Area	Cause	Equipment	Cust Outs	Cust Mins
E668415225	11/12/2007	9:50:00	FNW-13	ECD	TO	OFC	264	72,600
E233714633	11/12/2007	9:51:00	FRG-15	ECC	TO	OCO	859	132,286
E642587915	11/12/2007	9:52:00	SWD-13	ECE	TO	OCO	20	1,820
E227979783	11/12/2007	9:52:00	SWI-17	ECC	TF	OCO	374	183,634
E280941642	11/12/2007	9:53:00	PRI-21	ECC	TF	OFU	7	3,304
E490191203	11/12/2007	9:55:00	FNW-16	ECD	TF	OCO	4	580
E457409116	11/12/2007	9:56:00	MCA-15	ECC	TO		100	72,500
E581203759	11/12/2007	9:58:00	CRE-13	EAD	TF	OCO	4	1,388
E914587481	11/12/2007	10:00:00	WLK-13	ECA	TO	OCO	200	36,000
E172605837	11/12/2007	10:05:00	YEL-23	ECC	TF		1,191	340,626
E498869257	11/12/2007	10:06:00	YEL-26	ECC	TF		1,258	358,530
E867226599	11/12/2007	10:12:00	CRE-15	EAD	TO	OCO	2	544
E599732024	11/12/2007	10:18:00	HAP-15	EAA	TF	OCO	35	66,570
E077882339	11/12/2007	10:29:00	BAR-17	ECC	TO		78	68,484
E368591099	11/12/2007	10:34:00	MCA-13	ECC	TO		11	9,614
E292266715	11/12/2007	10:34:00	CAS-16	EBH	DU	UHH	1	192
E177648292	11/12/2007	10:35:00	LAB-27	EAA	TF	OCO	20	35,900
E879339026	11/12/2007	10:35:00	PLG-15	ECC	TO		1,116	256,680
E117444308	11/12/2007	10:38:00	ROE-13	EAA	TO	OFU	21	29,862
E272161182	11/12/2007	10:41:00	ROC-26	ECC	TF	OFU	7	5,096
E804206012	11/12/2007	10:51:00	GRI-16	ECC	TF		32	25,088
E988030218	11/12/2007	10:56:00	MAN-16	ECD	TO	OCO	10	1,290
E478689828	11/12/2007	10:57:00	KNO-11	ECA	TF	OCO	84	252
E544582462	11/12/2007	10:58:00	ENU-17	EBI	TF	OSV	6	1,062
E063017152	11/12/2007	10:58:00	LOL-21	ECD	TO	OCO	200	6,400
E287445802	11/12/2007	10:58:00	BDI-16	EBI	TO	UOT	1	197
E727023487	11/12/2007	11:01:00	MIR-16	EBF	TF		5	2,020
E813752813	11/12/2007	11:01:00	CHR-22	ECE	TF	OFC	9	4,428
E800902056	11/12/2007	11:05:00	HAM-13	EAC	TO	OCO	240	193,680
E211289967	11/12/2007	11:06:00	BON-16	ECA	EF	OFU	6	444
E857572665	11/12/2007	11:10:00	MCA-16	ECC	TO		188	184,804
E697526847	11/12/2007	11:19:00	CUM-13	EBI	TF	OCO	34	4,318
E740598409	11/12/2007	11:20:00	WAB-13	EBI	TF	OCO	41	4,100
E786849020	11/12/2007	11:21:00	PRI-23	ECC	TF		18	12,222
E257982145	11/12/2007	11:28:00	FRA-16	ECD	TO	OCO	200	12,400
E033167700	11/12/2007	11:29:00	RDO-13	EBJ	TF	OCO	1,413	72,063
E519117205	11/12/2007	11:34:00	ZEN-17	EBJ	TF	OSV	6	402
E554157624	11/12/2007	11:43:00	BUC-15	ECA	TO	CDH	2	1,258
E602542924	11/12/2007	11:43:00	SIL-13	ECE	TO	OCO	859	46,386
E364572331	11/12/2007	11:44:00	SST-15	EAA	EF	OJU	5	4,880
E303855885	11/12/2007	11:45:00	SNQ-17	EBF	TO	OCO	8	600
E589631907	11/12/2007	11:45:00	NLM-15	EAC	TO	OCO	67	43,148
E705263601	11/12/2007	11:48:00	CAM-23	EBJ	TF	OSV	4	200
E415263832	11/12/2007	11:49:00	LOL-23	ECD	TO	OCO	3	279
E439302551	11/12/2007	11:50:00	LOL-21	ECD	TO	OCO	2	170
E980920348	11/12/2007	11:51:00	EPO-12	ECD	TO	OFU	30	3,510
E224482601	11/12/2007	11:52:00	FRA-13	ECD	TO	CDH	12	6,876
E005762771	11/12/2007	11:55:00	MIR-15	EBF	EF		36	18,432
E483528826	11/12/2007	11:56:00	GWR-13	EBI	TF	OCO	479	23,471
E866678516	11/12/2007	12:00:00	IRO-13	ECF	TF	OPO	41	7,380
E599647234	11/12/2007	12:00:00	LWS-16	EBJ	SO	OCO	8	1,384
E349480629	11/12/2007	12:01:00	GWR-16	EBI	TF	OCO	419	18,436
E400118150	11/12/2007	12:03:00	VAS-12	EBL	TF	OCO	6	3,318
E519373967	11/12/2007	12:03:00	LTA-17	EBI	TF	OSV	1	222
E438764434	11/12/2007	12:17:00	LMD-16	EBJ	TF	OSV	6	576

Qualifying Storm Event
November 12, 2007

Notification	Date	Time	Circuit	Area	Cause	Equipment	Cust Outs	Cust Mins
E864797806	11/12/2007	12:20:00	FNW-13	ECD	TO	OFU	2	126
E619865877	11/12/2007	12:21:00	STW-15	ECA		CDH	1	339
E722504412	11/12/2007	12:21:00	SME-12	EBE	EF	OAR	1,037	123,403
E184993697	11/12/2007	12:24:00	TOL-17	EBD	TO	OCO	1	49
E552472482	11/12/2007	12:29:00	DIS-12	ECF	UN	OFC	26	14,326
E616197767	11/12/2007	12:36:00	DUV-12	EBD	TO	OCO	112	42,731
E955774094	11/12/2007	12:37:00	IRO-15	ECF	TO	OCO	1,682	97,556
E311605017	11/12/2007	12:39:00	PMA-15	ECE	TO	OCO	5	675
E309499224	11/12/2007	12:40:00	WOB-27	EAA	TO	OCO	23	36,340
E069017760	11/12/2007	12:48:00	PLG-13	ECC	TO	OCO	9	2,880
E532418716	11/12/2007	12:54:00	COT-15	EBD	TF	OCO	122	8,052
E265277295	11/12/2007	12:54:00	COT-13	EBD	TO	OCO	52	12,220
E913387636	11/12/2007	12:56:00	GWR-13	EBI	TO	OSV	30	21,150
E291366790	11/12/2007	13:01:00	BIG-15	EAC	TO	OCO	14	13,006
E283069455	11/12/2007	13:13:00	LLT-16	EBD	EF		6	3,312
E737889462	11/12/2007	13:13:00	LEA-17	EBI	TF	OSV	3	306
E772277688	11/12/2007	13:14:00	LAC-17	ECC	TF		22	15,114
E528282651	11/12/2007	13:16:00	TOL-17	EBD	EF	OCO	4	2,656
E662581520	11/12/2007	13:16:00	GBK-15	EAD	TF	OCO	11	14,498
E560688245	11/12/2007	13:17:00	PIK-23	EBF	EF		1	793
E886137647	11/12/2007	13:24:00	KEA-15	ECF	TO	OCO	5	1,080
E594128787	11/12/2007	13:26:00	SUM-21	EAC	TO	OCO	9	5,310
E114262200	11/12/2007	13:26:00	SOO-25	EBI	TF	OCO	73	9,052
E835609092	11/12/2007	13:29:00	VAS-22	EBL	EF	OTF	7	217
E005535142	11/12/2007	13:33:00	BRS-24	EAC	TO	OCO	114	160,398
E018928881	11/12/2007	13:33:00	KAP-15	ECA	TF	OTF	2	54
E174824202	11/12/2007	13:36:00	DES-12	EBJ	TF	OTF	5	1,230
E191283475	11/12/2007	13:37:00	WLK-13	ECA		CDH	3	249
E486242939	11/12/2007	13:42:00	BRS-13	EAC	TO	OFC	7	2,541
10778888	11/12/2007	13:42:00	SNQ-17	EBF	TO	OCO	25	4,859
E646229300	11/12/2007	14:07:00	SKY-25	EBD	TO	OCO	30	6,690
E037163027	11/12/2007	14:07:00	SWE-23	EBJ	TF	OSV	4	860
E105140157	11/12/2007	14:10:00	PHA-16	EBE	TF	OTF	6	318
E450077294	11/12/2007	14:11:00	KAP-15	ECA	TF	OTF	1	134
E037403475	11/12/2007	14:14:00	HOL-12	ECA	TF	OCO	7	322
10778908	11/12/2007	14:16:00	NBE-13	EBF	EF	OCO	12	36,587
E085462493	11/12/2007	14:18:00	LEA-13	EBI	TF	OSV	2	50
E981623795	11/12/2007	14:18:00	PMA-13	ECE	TO	OFU	1	142
E622123159	11/12/2007	14:22:00	WIN-12	ECE	TO	OCO	3	384
E641615596	11/12/2007	14:27:00	LYO-15	EBJ	TF	OCO	12	2,172
10778921	11/12/2007	14:27:00	NBE-13	EBF	EF	OPO	7	21,651
E032088408	11/12/2007	14:27:00	WOB-25	EAA	TF	OCO	135	166,455
E449799397	11/12/2007	14:36:00	LOC-23	EBE	TO	OCO	11	1,199
E118681612	11/12/2007	14:43:00	WAB-13	EBI	TF	OCO	18	4,086
E390495209	11/12/2007	14:44:00	NLM-12	EAC	TO	OCO	2	1,352
E743585735	11/12/2007	14:50:00	SIN-25	ECD	TO	OCO	1	248
E344985579	11/12/2007	14:50:00	BON-15	ECA	EF	OTF	1	80
E061798890	11/12/2007	14:51:00	CUM-13	EBI	TF	OJU	13	1,092
E187333279	11/12/2007	14:53:00	LEA-13	EBI	TO	OSV	2	14
E873099494	11/12/2007	14:56:00	PET-13	EAC	TF	OSV	1	1,218
E958173095	11/12/2007	14:56:00	MST-23	EBI	TF	OSV	1	4
E294088759	11/12/2007	15:00:00	OSC-25	EBI	TF	OSV	2	516
E425372262	11/12/2007	15:10:00	KAP-15	ECA	TF	OPO	1	1,284
E723230727	11/12/2007	15:14:00	PLY-16	EAA	EF	OTF	4	3,344
E271112572	11/12/2007	15:14:00	FNW-17	ECD	TO	OFC	1	76

Qualifying Storm Event
November 12, 2007

Notification	Date	Time	Circuit	Area	Cause	Equipment	Cust Outs	Cust Mins
E483616051	11/12/2007	15:17:00	HAM-15	EAC	TO	OCO	76	7,828
E396883922	11/12/2007	15:30:00	FRA-16	ECD	TO	CDH	2	994
E198504672	11/12/2007	15:31:00	BDI-12	EBI	TF	OCO	383	22,214
E753532690	11/12/2007	15:31:00	MTV-16	EAC	TO	OFC	14	6,846
E254154468	11/12/2007	15:38:00	CPV-13	EAD	TF	OSV	1	136
E452327029	11/12/2007	15:44:00	SHE-26	ECE	TO	OCO	3	207
E628641854	11/12/2007	16:08:00	CLA-13	EBI	TF	OCO	5	5,760
E031441825	11/12/2007	16:22:00	PLA-23	EBD	TF	OCO	11	1,001
E614615452	11/12/2007	16:22:00	AIR-22	ECC	TF	UTC	2	916
E173067615	11/12/2007	16:26:00	MIL-17	ECE	TO	OCO	1	71
E253345156	11/12/2007	16:28:00	LYN-13	EAA	TO	OFC	23	1,426
E261639250	11/12/2007	16:30:00	TAN-13	ECC	TO		137	49,320
E423104235	11/12/2007	16:34:00	IRO-13	ECF	TO	CDH	2	1,916
E932226490	11/12/2007	16:42:00	TAN-16	ECC	TF	OCO	12	4,056
E312329275	11/12/2007	16:48:00	LON-22	ECC	TF		2,812	781,388
E556686355	11/12/2007	16:48:00	HAS-12	ECF	TO	OCO	5	530
E939452499	11/12/2007	16:52:00	LUH-14	ECC	TF		16	14,688
E760007273	11/12/2007	17:03:00	MKI-17	ECC	TF	OTF	5	1,410
E590953538	11/12/2007	17:05:00	CUS-13	EAA	TO	OFC	47	11,985
E697073787	11/12/2007	17:13:00	BCH-15	EAA	TF	OCO	60	64,020
E498949261	11/12/2007	17:21:00	ALG-12	EAC	TF	OSV	1	279
E952139323	11/12/2007	17:22:00	BIG-12	EAC	TO	OCO	1	778
E532014454	11/12/2007	17:27:00	CLV-16	EAD	TO	OCO	3	379
E295449715	11/12/2007	17:29:00	PLG-15	ECC	TF	OTF	10	1,510
E330421320	11/12/2007	17:34:00	ROC-17	ECC	TF		36	23,220
E493900816	11/12/2007	17:41:00	MCK-16	EAA	TF	OTF	5	5,495
E173319060	11/12/2007	17:49:00	LYN-13	EAA	TO	OCO	11	5,071
E051275571	11/12/2007	17:52:00	LYO-15	EBJ	TF	OSV	7	952
E777057517	11/12/2007	17:58:00	LEA-13	EBI	TF	OSV	2	370
E892432827	11/12/2007	18:14:00	IRO-15	ECF	TO	OFU	12	9,071
E256051811	11/12/2007	18:15:00	SWI-17	ECC	EO	OFU	164	67,568
E712883914	11/12/2007	18:30:00	CRE-15	EAD	TO	OTR	1	316
E676445485	11/12/2007	18:33:00	WOL-25	ECC	TF	OTF	2	360
E958052822	11/12/2007	18:42:00	LTA-18	ECA	TF	OCO	2	316
E020687982	11/12/2007	18:50:00	SWA-12	EAD	TF	OTR	1	316
E572232203	11/12/2007	19:04:00	WAB-13	EBI	EF	OCO	729	113,760
E181549382	11/12/2007	19:14:00	ELD-27	ECC	EO	OFU	30	1,620
E118510174	11/12/2007	19:24:00	PET-12	EAC	TF	OSV	1	216
E812754036	11/12/2007	20:10:00	QUI-25	ECF	TO	OCO	1	38
E412444594	11/12/2007	20:27:00	BRO-16	EAD	TF	OCO	1	163
E589075173	11/12/2007	20:52:00	BON-13	ECA	EF	UPC	10	4,840
E264677263	11/12/2007	21:01:00	FLD-15	EAD	TO	OCO	1	68
E804795151	11/12/2007	21:10:00	FAB-15	EAD	EF	OCN	1	99
E803209185	11/12/2007	21:30:00	DGR-17	ECA	EF	USV	1	247
E486865741	11/12/2007	21:46:00	TAN-13	ECC	TF	OTF	4	3,656
E378928472	11/12/2007	21:55:00	CLV-16	EAD	TO	OJU	1	107
E940345126	11/12/2007	22:08:00	BLA-13	EAA	TF	OPO	15	15,480
E237187172	11/12/2007	22:23:00	SKE-26	ECE	UN	OFC	2	170
E598971319	11/12/2007	22:38:00	LON-23	ECC	TF		48	40,560
E710913455	11/12/2007	22:58:00	YEL-25	ECC	TF	OFC	1	653
E427666803	11/12/2007	22:59:00	NLM-15	EAC	TF		13	8,541
E052779112	11/12/2007	22:59:00	NLM-15	EAC	TO	UOT	38	13,832
E805390704	11/12/2007	23:04:00	LON-23	ECC	TF		8	2,968
E358601853	11/12/2007	23:14:00	LON-26	ECC	TF	OTF	1	568

Terms, Codes and Definitions Used on Detail Reports

Notification	[Notification Number] A number assigned by SAP, identifying the outage record
Date	The date of the outage
Time	The time of the outage
Circuit	[Reference Circuit] The circuit identifier for the affected circuit
F/LOC	[Functional Location] The grid number where the outage occurred. If the grid number is not available, the Reference Circuit identifier occupies this field
EQT NBR	[Equipment Number] A number used to tie the equipment involved in the outage to the related information in SAP. This number does not represent the physical number of the equipment

Area	[Maintenance Planner Group] A code representing the energy, region and service center	
	EAA – Bellingham	EBJ – South King
	EAB – Lynden	EBK – Southwest King
	EAC – Skagit	EBL – Vashon
	EAD – Whidbey	ECA – Puyallup
	EBD – Redmond	ECC – Olympia
	EBE – Factoria	ECD – Port Orchard
	EBF – Snoqualmie	ECE – Poulsbo
	EBI – Enumclaw	ECF – Port Townsend

Cause	Cause of Outage	
	AO – Accident Other	EF – Equipment Failure
	BA – Bird or Animal	EO – Electrical Overload
	CP – Car Pole	FI – Faulty Installation
	CR – Customer Request	TF – Tree Off Right-of-Way
	DU – Dig-up Underground	TO – Tree On Right-of-Way
	SO – Scheduled Outage	UN – Unknown

Equipment	Affected by, or involved in the outage	
	OCN – Connector	OSW – Overhead Switch
	OCO – Overhead Conductor	OTF – Overhead Transformer Fuse
	OCR – Crossarm	OTR – Overhead Transformer
	OFC – Overhead Cut-out	OUP – OH to UG Primary
	OFS – Overhead Fire Signal	OUS – OH to UG Secondary Service
	OFU – Fuse Link/OH Line Fuse	SBF – High-side Bank Fuse
	OGS – Span Guy	SCB – Power Circuit Breaker
	OHR – Overhead Recloser	UOT – Underground Outdoor Term
	OIN – Insulator	UPC – Underground Primary Cable
	OJU- Jump Wire	UPT – Padmount Transformer
	OPI – Overhead Pin Insulator	USV – Underground Service
	OPO – Pole	UTC – Underground Terminal Fuse
	OSV – Overhead Service	UTR – Submersible Transformer
	ORE – Regulator	

Codes, Definitions – Continued

CUST OUT	[Customer Out] The number of customers without power for any given outage record
CUST MIN	[Customer Minutes] The total number of minutes customers were without power for any given record
CODE	[Storm Code] An event descriptor
	NON – Non Storm / Normal Conditions
	WTH – Weather Related (eg: wind storm, showers, etc)
	MAJ – Major event

Media Coverage

THE BELLINGHAM HERALD

November 12, 2007

Overnight storm blamed for power outages

By ANDY CAMPBELL

An overnight storm has caused outages in Blaine, Lynden and scattered areas in Bellingham this morning, and high winds are expected to continue today.

A Puget Sound Energy spokeswoman said an entire circuit in Lynden was cut, leaving more than 700 without power. She said it is the most widespread outage in Whatcom County this morning, and those people should get power back within the next few hours.

PSE also reported scattered outages around Whatcom, Skagit and King Counties, and KING-TV said three substations near Monroe are off line, cutting off power for about 8,000 utility customers.

The National Weather Service is warning of high winds today on the Washington coast and other parts of Western Washington, including the Puget Sound area. A spokesman said peak winds are hitting 60 to 65 mph, with a sustained wind of 45 mph that will last throughout the morning.

Winds should die down midday, he said.

Forecasters say a front blowing through the rest of the state is packing winds of 30 to 40 mph with gusts to 60. That's enough to knock trees into power lines.

Seattle Post-Intelligencer

More than 20,000 power outages in Western Washington

SEATTLE -- High winds blowing through Western Washington knocked out power this morning for more than 20,000 utility customers.

Three substations went off line near Monroe, putting about 8,000 customers in the dark for a time. A spokesman, Neil Neroutsos (ner-OOT'-soh), says that problem has been resolved. But storm-related outages have cut power to about 1,400 customers in the Lake Stevens area.

Qualifying Storm Event
November 12, 2007

Puget Sound Energy reports 9,000 to 10,000 outages in Whatcom, Skagit, Island, Kitsap and King counties.

Seattle City Light reports nearly 3,900 customers without power in the Burien area because of a failure in a feeder line.



November 10, 2007

Power outage provides some light moments

By Cindy Zetts

When our power went off last Thursday morning, I was unfazed. No biggie, I thought; it will come back on quickly.

But no. It came back on Friday night, 36 hours later.

It probably serves us right. Last December, when more than a million homes were dark because of a storm that took out power all over the Puget Sound, we didn't lose ours. I remember it flickered once.

While homes all over the area were dark and cold, our neighborhood was ablaze with light (and heat). The glow from our Christmas lights could be seen from miles away, flaunting the fact that we had power.

Every time someone asked whether our power was back on, we'd say, quite sheepishly, that we had never lost it. The longer repairs took, the nastier the looks we got and the warier we became.

I knew we'd pay eventually.

The power outage on Nov. 1 and 2 affected 1,323 homes, Puget Sound Energy said. Initially, it was expected to be repaired by midnight (11:59 p.m., actually, which amused me — why not just say midnight?).

At 5:30 the next morning — I knew the time because of the LED watch on my nightstand — I called again for an update.

By then, the repair estimate was 8 a.m. Then it changed to 2 p.m. then 11:59 p.m. The number of affected homes changed, too — from 1,323 to 350 back to 1,323. That's when I knew we were in trouble. The number of homes should get smaller when things are being fixed, right?

The outage was caused by equipment failure. It was prolonged by a subsequent series of failures and a water-main break that delayed repairs to the power grid.

Qualifying Storm Event
November 12, 2007

Kind of comedic, really.

But honestly, one night without power wasn't awful. It was unfortunate that it happened on one of the coldest nights we've had recently, but that's life.

I picked up Mexican food, and we ate it by candlelight. We played cards in front of our gas fireplace (useful for a little light — it doesn't heat anything), and slept in one room with our dog, who kept us warm.

I was frosted (pun intended) that I missed "Grey's Anatomy." And when the power was out for a second day, we had to toss almost everything in our fridge.

But in the end, all was good: I can watch "Grey's Anatomy" online. Our fridge is the cleanest around because we gave it a good scrubbing.

Plus, I got a column out of it.



November 13, 2007

Power restored to most customers

SEATTLE -- One day after a storm with winds gusting to nearly 100 mph blew through Western Washington, crews had restored power to all but about 11,000 customers.

Puget Sound Energy said most of those still without power were in Whatcom and Thurston Counties, and line crews hoped to have electricity flowing to most of those homes by noon today.

A PSE spokesman said a main transmission line near the town of Glacier in east Whatcom County is down and crews have to build a road to get repair equipment into the area.



Linnette Engler sent in this photo of wind-blown power lines in Bellingham

At the storm's peak midday, about 100,000 people had lost power.

Qualifying Storm Event
November 12, 2007

The Rainier School District and Ocean Beach School District cancelled classes Tuesday because of power outages, and in Whatcom County the Meridian School District had to close Reither Primary School and Ten Mile Creek Elementary School.

While the main Puget Sound area was mostly spared the worst, the coast and Northwestern Interior sections of the state had the strongest winds since the December 2006 windstorm.

Clallam Bay reported a gust to 92 mph, while Bellingham had an official gust to 74 mph, and an unofficial gust of 97 mph from a trained spotter six miles northeast of the city (that might have been a localized effect.) Anacortes recorded a gust to 73 mph, while on the coast, wind gusts were between 70 and 79 mph, including 71 mph at Hoquiam.

Here are some peak overall storm gusts.

Bellingham (trained spotter, but unofficial): 97 mph

Clallam Bay: 92 mph

Lake Lawrence: 84 mph

Tatoosh Island: 78 mph

Destruction Island: 75 mph

Bellingham (official): 74 mph (then 71 again at 10 a.m.)

Anacortes: 73 mph

Hoquiam: 71 mph (they've hit over 70 a few times)

Oak Harbor: 70 mph

Smith Island: 68 mph

Westport: 67 mph

East Strait of Juan De Fuca Buoy: 64 mph

Friday Harbor: 63 mph

Ferndale: 62 mph

Port Angeles: 58 mph (early Monday a.m.)

Point Robinson: 57 mph

Forks: 57 mph (last observation before power outage at 6 a.m.)

Seattle (Alki Beach): 55 mph

Hoquiam: 54 mph

Qualifying Storm Event
November 12, 2007

La Conner: 53 mph

Tacoma: 53 mph

Forks: 52 mph

Seattle (Magnolia): 51 mph

Orcas Island: 48 mph

Seattle (Sea-Tac): 47 mph

Olympia: 46 mph

Everett: 39 mph

The Meteorological Lowdown:

A strong area of low pressure of at least 967mb made landfall along the northern tip of Vancouver Island around 8 a.m. Monday. This was close to a classic wind storm pattern for us. (If we were to call it a "text book" case, we would want it going ashore either near Neah Bay or along the southern tip of Vancouver Island).

Nonetheless, while the storm went ashore farther to the north, it was fairly strong and that strength made up for some of the energy lost to it being farther away.

That 967mb report came from Solander Island, off the northwest coast of Vancouver Island and near the storm's center. (They also had wind gusts to 79 mph).

The storm's path allowed for strong south winds along the coast, and strong southeast winds along the northern interior. The Olympic Mountains protect the main Puget Sound area from those southeast winds, but usually that area gets the wind when the storm's center passes due north and the associated cold front opens the chute for the due south winds to race toward the low.

However, in this case, the front was aligned to where it allowed some of the building wind surge to push through via the Strait of Juan de Fuca. That alleviated some of the pressure difference so when the front passed through the Puget Sound region, we didn't have as much of a surge left.

We still had wind gusts into the 40-45 mph range (Spots near Puget Sound were over 50 mph) but not as much as we had feared. (The storm making landfall farther to the north also helped let Puget Sound region off the hook.)

Southern British Columbia did get hit hard by the storm, as they were closer to the storm's landfall. Gusts around the greater Vancouver area were in the 55-60 mph range.

How Does This Storm Compare?

This storm's central pressure was on par with the December 2006 storm and actually stronger than the Inauguration Day storm of 1993. However, it made landfall much farther north, and that spared the Puget Sound area the bulk of the wind.

Qualifying Storm Event
November 12, 2007

This storm was the strongest storm to hit the coast and Northern Interior since the December 2006 storm. In fact, Bellingham, Friday Harbor and Hoquiam had stronger winds with this storm than the December '06 storm.



November 13, 2007

Cleanup begins after wind storm hits Northwest

SEATTLE — The cleanup continues this morning after Monday's windstorm knocked out power to thousands around Western Washington.

At the height of the Veterans Day windstorm, winds gusting from 70-95 mph blew trees and branches onto power lines and cut electricity to nearly 85,000 homes and businesses, from the Canadian border all the way south to Vancouver, Wash.

While the storm wasn't as bad as last December's windstorm, it caused a fair amount of damage. In the town of Rainier, high winds blew off part of the roof of a store. In Yelm, winds shattered a barn, and several large trees were uprooted.

Puget Sound Energy reports 11,000 customers are still without power Tuesday morning - 9,000 in Whatcom County and 2,000 in Thurston County. PSE says most of its customers should be back online by noon.

Clallam County has 12,000 without power, but they're expected to also be back up by midday. In other areas, power isn't expected to get back up until Tuesday night.

School closures and delays

Some schools were closed or delayed Tuesday due to damage from Monday's wind storm.

All schools in the Rainier School District in Thurston County are closed because of power problems. In the Ocean Beach District, all schools will now be closed.

The Yelm School District is running two hours late. There's no morning pre-school, no skill center and no out-of-district transportation.

High winds clocked at 97 mph

The National Weather Service said the strongest gust of wind it recorded was 97 mph along the Mount Baker Highway east of Bellingham about 9 a.m. Winds at Bellingham International Airport, about 80 miles north of Seattle, gusted to 74 mph.

Qualifying Storm Event
November 12, 2007

A weather station at Bellingham Cold Storage, on Bellingham Bay, recorded a gust of 84 mph. Sustained winds were around 45 mph, and wind speeds alone broke several windows.

Other wind gusts reported by the National Weather Service about noon included 71 mph at Hoquiam, 62 at the Whidbey Island Naval Air Station near Oak Harbor, 56 at Friday Harbor, 55 at Quillayute on the Olympic Peninsula, 53 at McChord Air Force Base near Tacoma, 48 at La Center, 46 in Kelso, 45 at Burlington, and 41 at Olympia and Seattle-Tacoma International Airport.

Widespread power outages

One of the earliest power outages was before dawn around Monroe, where about 8,000 customers lost power for a time after three substations went off line, said Neil Neroutsos, a spokesman for the Snohomish County Public Utility District.

That problem was resolved fairly quickly, but later storm-related problems cut power to about 1,400 customers in the Lake Stevens area, Neroutsos said.

The region's largest utility, Puget Sound Energy, had roughly 37,000 customers in the dark at various times in nine counties, with Whatcom and Thurston counties hit the hardest, spokeswoman Christina Mills said.

More than 15,000 customers were without electricity in the Grays Harbor County Public Utility District, spokeswoman Liz Anderson reported.

At least 9,300 Cowlitz County PUD customers also lost power, along with 8,000 in the Clallam County PUD, utility officials said.

Seattle City Light reported nearly 3,900 customers lost power in the Burien area because of a failure in a feeder line.

Eastern Washington also had problems. Spokane-based Avista Utilities said about 1,140 customers lost power in Eastern Washington and northern Idaho from wind-related power outages.

Windy weather was blamed for outages that hit about 2,000 homes and businesses north of Vancouver, Wash., mostly in and around Yacolt, Amboy and Ridgefield, said Mick Shutt, a spokesman for the Clark County Public Utility District.

Snow in the Cascades

The Weather Service issued a snow advisory for the Cascade mountain passes, with the possibility of four to eight inches falling near Steven's Pass Monday night.

Snoqualmie Pass east of Seattle had wet snow and slush on a 20-mile stretch of Interstate 90 from the summit to Easton, transportation officials said.

Additional snow removal crews were summoned to keep the road clear for holiday traffic.

Qualifying Storm Event
November 12, 2007

Oregon

High winds also cut power to tens of thousands of Oregonians Monday including about 15,000 on the north coast and up to 35,000 at a time inland, mostly in Marion, Washington, Clackamas and western Multnomah counties.

Portland General Electric said outages in its area were as high as 35,000 at midday as service was restored to some areas but then failed elsewhere as a powerful Pacific frontal system moved through the area.

About 300 crewmen were working on restoring service.

By late afternoon about 16,000 PGE customers remained without electricity.

The urban science of wind

The wind storm provided the first test of a network of 23 sensors placed atop light poles in Downtown Seattle that use the sound of the wind to measure wind speed and direction.

The wind bounces off buildings and goes all over the place. Now, these microenvironments can be measured.

"We had some winds at 22-23 miles an hour. Parts of Downtown never got above five (miles an hour), because the wind, once it gets into the urban canyons, breaks up and goes every which way," said Bob Royer, director of the Urban Canyons Program.

In this case, the system is providing interesting weather information. But, that data could also prove critical to predicting what direction a plume of hazardous material or even radiation from a terror attack might travel.



November 13, 2007

Jefferson weathers 60-mph winds

By Jeff Chew, Peninsula Daily News

Power was expected to be restored to all areas of East Jefferson County today after wind gusts of up to 60 mph hammered the area on Monday.

The early-morning storm knocked trees into power and fiber optic lines and disrupted service from Brinnon to Discovery Bay and Port Townsend.

Some of OlyPen's DSL customers remained off-line Monday evening.

Qualifying Storm Event
November 12, 2007

Other Internet and cell phone services for OlyPen's 10,000 customers in Jefferson and Clallam counties were restored Monday afternoon, said Dana Dyksterhuis, a Qwest spokeswoman in Seattle.

The storm had sent a tree onto power lines and a fiber optic cable at Eaglemount Road on state Highway 20 near Discovery Bay, crippling Qwest's long-distance and digital service across the North Olympic Peninsula.

Qwest repair crews had to wait until utility workers could clear electric lines at the site Monday morning.

They were working to splice the fiber optic line Monday afternoon.

Puget Sound Energy spokeswoman Dorothy Bracken said that electricity was expected to be fully restored to 13 east county locations this morning.

1,300 lost power

"As of 2 p.m. [Monday] there were 1,300 customers without power in Jefferson County," Bracken said.

"Most [locations] have been scattered - where trees or tree branches hit power lines."

Although she did not know which communities were hit hardest, Bracken estimated that the largest number of customers affected in any individual area was about 100.

"What's labor intensive is going from location to location to make the repairs," she said.

A total of 77,000 Puget Sound-area customers were affected by the windstorm she said.

The good news is, according to weather forecaster Brad Coleman, "This event's done. We've taken all the warnings down."

"But it is probably pretty safe to say that the gusts were up to 60 mph in Eastern Jefferson County," said Coleman, with the National Weather Service in Seattle.

Dyksterhuis said trees felled some of the company's fiber optic lines, which also affected cell phone service.

Many people found they had dial tones, she said, but could not dial through, as a result of the tree-damaged lines.

She explained that the broken fiber lines diminished the Qwest system's capacity to handle increasing calls.

Lt. Clint Casebolt, State Patrol spokesman, said the law enforcement agency reported trees down so that Department of Transportation crews could clear highways and roads.

Reports of fallen trees came before 6 a.m., especially between Brinnon and Quilcene and on state Highway 19.

Gardiner and Discovery Bay were also hit, but fewer trees fell there, he said, adding, "It was all cleaned up by noon."

Qualifying Storm Event
November 12, 2007

Port Townsend Police Detective Jason Greenspane said that several fallen trees were reported around the city, with power lines knocked down at 49th Street near Cook Avenue.

"Several partially blocking trees have been removed," he said Monday afternoon.

A roof was partially blown off an unoccupied former thrift store building on Upper Sims Way adjacent to First Federal Savings & Loan.

Greenspane also reported wind-whipped waves early Monday that crashed up against the bulkheads on the downtown waterfront, but resulted in no significant damage.

THE BELLINGHAM HERALD

November 13, 2007

Ferocious winds create howling havoc

By KIRA MILLAGE

Fall winds whipped through Whatcom County Monday morning, knocking down trees, taking out utility lines and giving many residents a case of déjà vu.

The first major windstorm of the season came a few days shy of the anniversary of the Nov. 15, 2006, windstorm that uprooted trees, caused two buildings to catch fire and knocked out power to large areas across the county.

Wind speeds peaked Monday between 8 and 9 a.m., with the National Weather Service reporting gusts of 97 mph on Mount Baker Highway and 74 mph at Bellingham International Airport. A weather station at Bellingham Cold Storage, on Bellingham Bay, recorded a southwest gust of 84 mph. Sustained winds were about 45 mph.

The winds and falling trees closed roads and took out dozens of power lines. Puget Sound Energy had 15,000 Whatcom County customers without power as of 4:30 p.m. It was unclear how many homes overall lost power at some point Monday. Outages were reported across the county.

"Of our eight counties in Western Washington, Whatcom and Thurston were hardest hit" in terms of number of customers losing power, PSE spokeswoman Dorothy Bracken said.

PSE crews were working through the night to restore power. Most customers should have power restored by daybreak today, she said. Some remote spots might not have power until about noon today.

Some roads might still be closed today as well. Whatcom County Public Works couldn't clear many areas Monday because they were waiting for PSE to clear downed power lines first.

Qualifying Storm Event
November 12, 2007

During the peak of the storm, Samish Way-area resident Stanley Emert and his wife received a surprise while sitting in their kitchen eating breakfast. About the top third of a nearby 130-foot tree landed on the carport, porch and roof of their mobile home.

Emert, who moved there about six weeks ago, said they were also without power for several hours, but the house is still habitable.

“This is quite a welcome,” the 85-year-old said with a laugh.

Many residents escaped Monday’s storm without tree or power damage, but wind speeds alone broke several windows.

Bellingham resident Cathy Leahy had a skylight blow off her kitchen roof in the windstorm. She wasn’t too worried or upset — until the wind started dying down and the rain picked up.

“It’s raining in my house,” she said while trying to mop up the water. “I should probably call the window guys now.”

Boats in local marinas received minor damage in the wind, but a small motorboat partially sank about 3 p.m. in Lake Whatcom off a dock near the corner of Lake Whatcom Boulevard and Morgan Street. Firefighters with Whatcom County Fire District No. 2 surrounded the boat with an absorbent boom to isolate gasoline seeping from the boat.



November 13, 2007

South Sound spared heavy damage Winds down trees, power lines

By STACEY MULICK

You shouldn’t have as hard a time today keeping your hat on or your umbrella under control.

The forecast calls for partly sunny skies with a chance of showers and winds between 10 and 15 mph.

That’ll be a relief after Monday’s blustery weather knocked down power lines and trees, leaving thousands in the dark.

Nearly 85,000 lost power throughout Western Washington on Monday thanks to winds that gusted to more than 70 mph in some spots. Whatcom, Snohomish and Thurston counties appeared to be among the hardest hit.

Qualifying Storm Event
November 12, 2007

At its peak, Puget Sound Energy had roughly 77,000 customers without electricity in nine counties, including Pierce, King and Thurston. The outages in Pierce County occurred in Lakewood, Fife and southern unincorporated areas of the county.

As of 7 p.m. Monday, the utility still had 573 customers in Pierce County without electricity. Power was expected to be restored to them by 7 a.m. today, Puget Sound Energy spokeswoman Dorothy Bracken said.

Seattle City Light reported nearly 3,900 customers without power in the Burien area because of a failure in a feeder line, and more than 100 without power in Seattle for other reasons.

Most of Tacoma Power's customers survived the windstorm unscathed. The utility reported only small outages in pockets throughout its area. At one point in the afternoon, 30 to 40 customers were without power, spokeswoman Sonja Hall said.

"We fared really well so far, so we are pleased with that," she said.

At the height of the storm around noon, the National Weather Service recorded wind gusts of 71 mph at Hoquiam, Grays Harbor County; 68 mph in Bellingham; 62 mph at the Whidbey Island Naval Air Station near Oak Harbor; 56 mph at Friday Harbor, San Juan County; 55 mph at Quillayute on the Olympic Peninsula; 53 mph at McChord Air Force Base; 48 mph at La Center, Clark County; and 41 mph at Olympia and at Sea-Tac Airport.

Snoqualmie Pass had wet snow on a 20-mile stretch of Interstate 90 from the summit to Easton, transportation officials said.



November 13, 2007

High winds cut power to more than 13,000 in Washington state

SEATTLE -- Utility crews remained busy Tuesday following windstorms that brought hurricane-force winds to parts of Washington state and cut electricity to more than 130,000 homes and businesses.

The worst of the damage, including cars and houses hit by falling trees and windows shattered by wind, and the bulk of the power outages Monday were west of the Cascade Range, especially along the coast and in the northwest part of the state.

The strongest gusts of wind reported by the National Weather Service and other weather observers were 119 mph at Camp Muir at the 10,100-foot level of Mount Rainier; 98 on Rattlesnake Mountain, west of the Tri-Cities; 97 along State Route 542, the Mount Baker

Qualifying Storm Event
November 12, 2007

Highway, east of Bellingham; 92 at Sekiu and Clallam Bay on the northern Olympic Peninsula west of Port Angeles, and 84 mph at a business on Bellingham Bay.

Most of the electrical outages were repaired by midnight.

The region's largest utility, Puget Sound Energy, had roughly 77,000 homes and businesses in the dark at various times in its nine-county service area.

By early Tuesday, spokeswoman Dorothy Bracken said, the number was down to 11,000 customers, including 9,000 in Whatcom County, which includes Bellingham, and 2,000 in Thurston County, which includes the state capital of Olympia. She said the vast majority would likely have their lights back on by noon.

About 17,000 customers lost power in the Clallam County Public Utility District, which covers the northern part of the Olympic Peninsula. In the neighboring Grays Harbor County PUD, on the coast, more than 15,000 were in the dark.

Internet and cellular telephone service to about 10,000 customers in Clallam and Jefferson counties was lost for hours after a tree was blown onto power lines and a fiber optic cable on State Route 20 near Discovery Bay, south of Port Townsend, Qwest telecommunications officials said.

Other electrical outages affected about 10,000 customers each in the Snohomish and Cowlitz county PUDs, 4,000 in the Seattle City Light service area and 2,000 in the Clark County PUD.

East of the mountains, Avista Utilities had about 1,140 customers without power in Eastern Washington and northern Idaho and Pacific Power had more than 2,100

The storm also caused a 10-acre brush fire that took 30 firefighters from five agencies about two hours to control in Wapato. Fire officials said the fire started when high winds snapped a tree limb that knocked a power line to the ground.

Blowing dust that cut visibility to near zero was likely a factor in the rollover of a tractor-trailer rig carrying fertilizer on U.S. Highway 97 south of Toppenish, the State Patrol reported, and also resulted in workers at the Hanford nuclear reservation being sent home early Monday afternoon.