



2007
Qualifying Storm Events

October 18, 2007

Table of Contents

Table of Contents	2
Event Description	3
Date of event	3
Event Type.....	3
Service Areas Affected	3
Number of Customers Affected.....	3
Summary of System Impacts	3
Mobilization Summary	3
Major Event Day – Qualification.....	5
Qualified Events - 2007	5
Current Event – Calculation Detail	5
Cumulative list of events that have qualified	5
Event Restoration – Cost Summary	6
Restoration Cost Detail by Qualifying Event.....	6
YTD Storm Restoration Cost Detail – Through October 18, 2007	6
Detail Documents	7
Restoration Cost Detail – Current Event	8
IEEE-1366 - Detailed List of Distribution Circuits with Outages.....	9
Terms, Codes and Definitions Used on Detail Reports.....	21
Newsprint Media Coverage	23

Event Description

Date of event

October 18, 2007

Event Type

Wind storm.

Service Areas Affected

With wind gusts exceeding 60 MPH, this wide-spread wind event impacted all parts of Puget Sound Energy's electric service area.

Number of Customers Affected

Approximately 153,290 electric service customers lost power during this event.

Summary of System Impacts

Total Number of Outages	1036
Distribution Circuits Totally Out	51
Distribution Circuits Partially Out	985

Transmission Circuits Affected	15
Substations Totally Off-line	10

Mobilization Summary

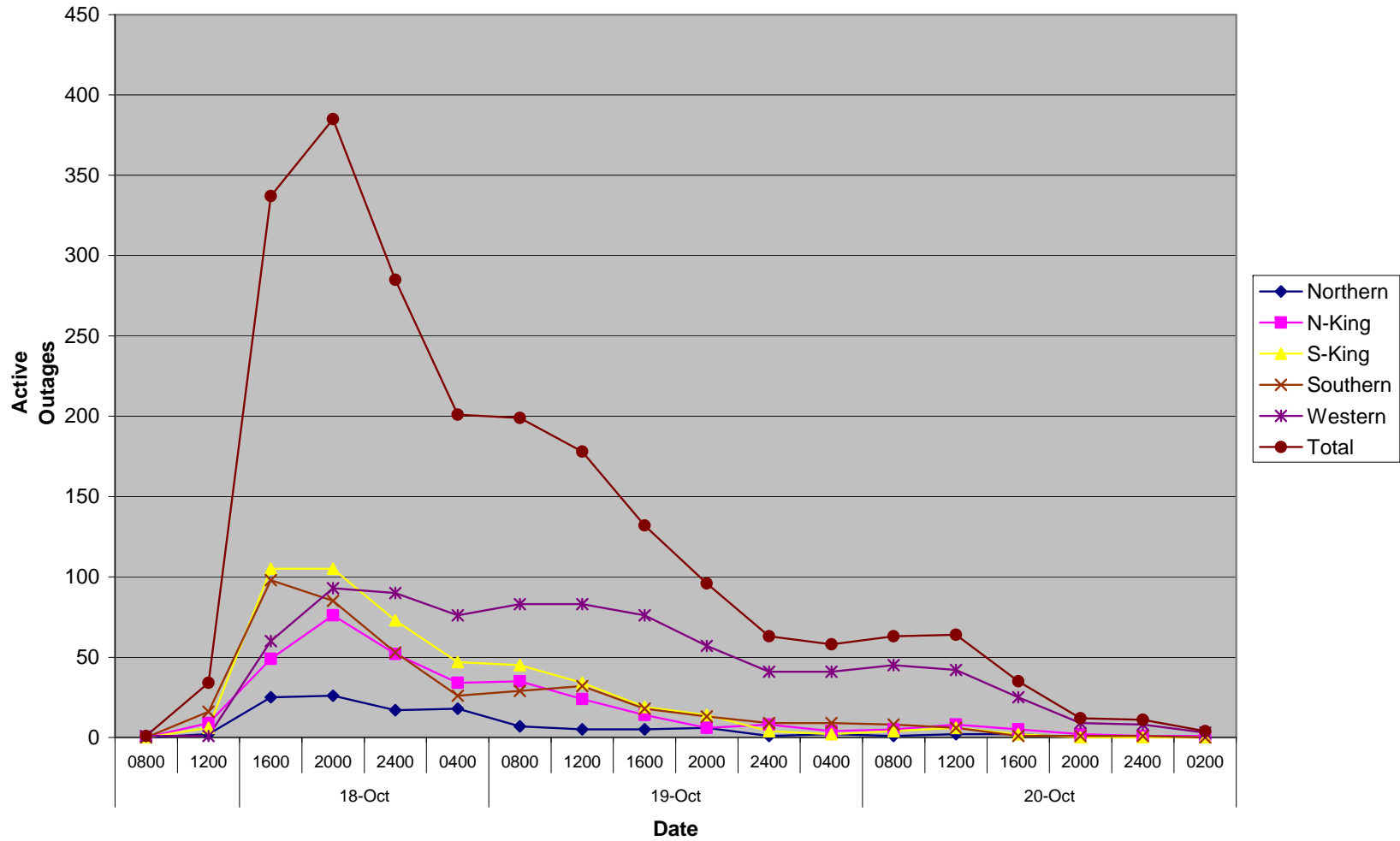
Operating bases

Base	Date Opened	Time Opened	Date Closed	Time Closed
Pierce	10/18	12:30	10/19	23:00
Thurston	10/18	12:30	10/19	12:00
S-King	10/18	14:00	10/19	22:00
Kitsap	10/18	14:30	10/21	01:00
N-King	10/18	14:30	10/19	19:00
Whatcom	10/18	15:00	10/18	21:00
Skagit/Island	10/18	15:00	10/19	07:30

Emergency Operations Center

EOC	Date Opened	Time Opened	Date Closed	Time Closed
	10/18	14:15	10/19	23:00

Outage Events - October 18, 2007



Major Event Day – Qualification

IEEE 1366 Method

IEEE 1366 was established to present a set of terms and definitions which can be used to foster uniformity in the development of distribution service reliability indices, to identify factors which affect the indices, and to aid in consistent reporting practices among utilities. Also, it provides guidance for new personnel in the reliability area, and tools for internal as well as external comparisons. The Major Event Day definition was created as part of IEEE 1366 to allow for consistent calculation of reliability metrics between utilities, and enable more valid comparisons with other utility reliability metrics.

IEEE Major Event Day Calculation (2.5 BETA METHOD)

1. A threshold on daily SAIDI is computed once a year, following year end.
2. Assemble the 5 most recent years of historical values of SAIDI/day.
3. Discard any days in the data set that has a SAIDI/day of zero.
4. Find the natural logarithm of each value in the data set.
5. Compute the average Alpha and the standard deviation (Beta) of the natural logarithms computed in step 3.
6. Compute the threshold Tmed where $Tmed = \exp(\text{Alpha} + 2.5 * \text{Beta})$
7. Any day in the next year with SAIDI > Tmed is a major event day.

Puget Sound Energy's Major Event Threshold for 2007: 6.87 Minutes

Qualified Events - 2007

Current Event – Calculation Detail

Event Date	Total Customer Minutes	Average Customer Count	Daily SAIDI – Customer Minutes /Customer Count
10/18/2007	60,595,351	1,057,943	57.28

Cumulative list of events that have qualified

Date(s)	T-med Score	O&M – Deferrable Accumulation
1/2/2007	8.41	\$1,339,165
1/5/2007	11.62	\$2,395,508
1/9/2007	23.66	\$7,000,000
10/18/2007	57.28	\$0

Event Restoration – Cost Summary

Restoration Cost Detail by Qualifying Event

Date	Qualified Events Deferred Account	Capital	C&D Costs Recoverable from Direct Billings (Costs Not Yet Billed)	O&M – Not Deferrable	O&M – Deferrable Accumulation	Total O&M	Total
1/2/2007	\$0	\$56,550	\$0	\$38,044	\$1,338,765	\$1,376,809	\$1,433,359
1/5/2007	\$0	\$111,336	\$0	\$67,273	\$2,328,235	\$2,395,508	\$2,506,844
1/9/2007	\$316,014	\$171,146	\$0	\$113,115	\$3,333,000	\$3,446,115	\$3,933,275
10/18/2007	\$5,081,358	\$224,262	\$0	\$272,937	\$0	\$272,937	\$5,578,557

YTD Storm Restoration Cost Detail – Through October 18, 2007

Qualified Events Deferred Account	Capital	C&D Costs Recoverable from Direct Billings (Costs Not Yet Billed)	O&M – Not Deferrable	O&M Deferrable Accumulation	Total O&M	Total
\$5,397,372	\$563,294	\$0	\$491,369	\$7,000,000	\$7,491,369	\$13,452,035

Qualifying Storm Event
October 18, 2007

Detail Documents

Restoration Cost Detail – Current Event

Detailed List of Distribution Circuits with Outages

Terms, Codes & Definitions Used on Detail Reports

Newsprint Media Coverage

Restoration Cost Detail – Current Event

Puget Sound Energy							
October 18, 2007 Storm Damage Repair Costs							
	Qualifying Events Deferred Account	Capital	C&D Recoverable from Direct Billings (Costs Not Yet Billed)	O&M - Not Deferrable	O&M - Deferrable Accumulation	Total O&M	Total
Labor							
ST					\$ 112,283	\$112,283	\$112,283
OT					\$ 381,351	\$381,351	\$381,351
Total Labor	\$0	\$0	\$0	\$0	\$ 493,634	\$493,634	\$493,634
Labor OH					\$ 311,974	\$311,974	\$311,974
Materials		\$67,447			\$ 193,767	\$193,767	\$261,214
Contractors		\$133,092			\$ 4,051,053	\$4,051,053	\$4,184,144
Other Direct Charges		23,723.52			\$ 72,122	\$72,122	\$95,846
Fleet					\$0	\$0	\$0
Other Assessments				\$272,937	\$ (41,191)	\$231,746	\$231,746
Deferred Expenses	\$5,081,358				(5,081,358)	(\$5,081,358)	\$0
	<u>\$5,081,358</u>	<u>\$224,262</u>	<u>\$0</u>	<u>\$272,937</u>	<u>\$0</u>	<u>\$272,937</u>	<u>\$5,578,557</u>

IEEE-1366 - Detailed List of Distribution Circuits with Outages

Notification	Date	Time	Circuit	Area	Cause	Equipment	Cust Outs	Cust Mins
E952180028	10/18/2007	4:38:00	VAS-12	EBL	EF	UTC	4	648
E659627201	10/18/2007	4:45:00	FRG-26	ECC	EF	UPT	6	1,811
E211121868	10/18/2007	5:06:00	KCR-17	EBJ	EF	OTF	2	218
E464971801	10/18/2007	6:25:00	MER-15	EBE	PO	UOT	1	345
E791474102	10/18/2007	7:00:00	BDI-13	EBI	SO	UPT	1	434
E187587219	10/18/2007	7:14:00	PTL-13	ECF	TO	OFU	23	1,702
E018435127	10/18/2007	7:40:00	SNQ-15	EBF	TF	OCO	19	1,235
E994575730	10/18/2007	7:56:00	CUM-15	EBI	TF	OCO	1	59
E457412354	10/18/2007	7:57:00	BHL-15	ECE	EF	UPT	17	6,681
E347569913	10/18/2007	8:00:00	ELD-25	ECC	SO	UPT	4	1,228
E610622678	10/18/2007	8:00:00	WIN-15	ECE	SO	UPT	1	301
E992261437	10/18/2007	8:00:00	LLS-17	EAA	SO	UHH	8	960
10772669	10/18/2007	8:00:00	MWD-15	EBE	EF	OSV	2	933
E333640998	10/18/2007	8:02:00	DES-13	EBJ	UN	OMP	1	97
E805033413	10/18/2007	8:07:00	HAS-15	ECF	TO	OCO	22	4,664
E793593302	10/18/2007	8:28:00	PGA-12	ECE	TO	OTF	2	326
E668068069	10/18/2007	8:28:00	PHA-13	EBE	TO	UOT	16	3,712
E985705156	10/18/2007	8:42:00	NBE-16	EBF	TO	OTF	6	300
E552677566	10/18/2007	8:55:00	KWH-25	EBE	TF	OCO	288	21,888
E992904023	10/18/2007	9:17:00	BTR-21	EBE	TF	OCO	1,498	139,314
E515375805	10/18/2007	9:38:00	TOL-15	EBD	TO	OCO	1,100	79,200
E966965737	10/18/2007	9:40:00	TOL-17	EBE	TF	OCO	68	20,876
E938563344	10/18/2007	9:41:00	TOL-16	EBD	TO	OCO	541	61,674
E728486263	10/18/2007	9:44:00	CHI-12	ECD	TF	UPT	5	11,360
E596136249	10/18/2007	9:46:00	HOB-16	EBI	TF	OCO	43	6,235
E940643001	10/18/2007	9:47:00	GWR-16	EBI	TF	OCO	419	42,319
E032754599	10/18/2007	9:48:00	FAL-15	EBF	TF	OSV	1	194
E095886379	10/18/2007	9:57:00	CLA-13	EBI	TO	OCO	8	632
E393509351	10/18/2007	9:59:00	ROL-15	EBJ	TO	OCO	77	10,780
E888399060	10/18/2007	10:00:00	NLM-12	EAC			36	4,536
E904964758	10/18/2007	10:00:00	DEC-15	ECC	DU	UPC	21	19,509
E122221650	10/18/2007	10:00:00	BAK-25	EAA	SO	UPT	2	600
E697880665	10/18/2007	10:00:00	KWH-25	EBE			16	176
E505018264	10/18/2007	10:02:00	PIP-22	EBI	EF	USV	1	79
E618127272	10/18/2007	10:02:00	LYO-12	EBJ	TO	OCO	1,183	106,470
E608865948	10/18/2007	10:18:00	MOT-14	ECC	EF	USV	1	432
E543765934	10/18/2007	10:19:00	KAP-15	ECA	TO	OFC	149	40,826
E022506681	10/18/2007	10:20:00	LMC-23	EBF	TO	OCO	27	2,349
E477300502	10/18/2007	10:25:00	HOB-16	EBJ	TO	OTF	1	70
10772811	10/18/2007	10:25:00	MOT-14	ECC	AO	UPT	1	383
E003354284	10/18/2007	10:26:00	ANA-16	EAC	EF	UPT	15	4,080
E962690709	10/18/2007	10:29:00	SNQ-13	EBF	TO	OCO	2,942	197,114
E134868778	10/18/2007	10:37:00	KLA-15	EBD	TO	OCO	38	6,004
E704484147	10/18/2007	10:39:00	MWD-13	EBE	EF	UTC	8	632
E762849988	10/18/2007	10:43:00	ENU-17	EBI	EF	OCN	2	176
E784293280	10/18/2007	10:45:00	HEM-16	ECA	TO	OCO	1,300	68,900

Qualifying Storm Event
October 18, 2007

Notification	Date	Time	Circuit	Area	Cause	Equipment	Cust Outs	Cust Mins
E038934280	10/18/2007	10:59:00	LON-22	ECC	TO		17	10,472
E551268841	10/18/2007	11:00:00	NLM-15	EAC	TO	OFU	225	15,750
E434181364	10/18/2007	11:08:00	PLA-21	EBD	TO	OCO	980	209,552
E761015482	10/18/2007	11:16:00	RAI-14	ECC	TO		20	3,560
E739726557	10/18/2007	11:18:00	WLK-13	ECA		GCB	12	20,304
E227696310	10/18/2007	11:19:00	GWR-13	EBI	TF	OCO	1	103
E050179011	10/18/2007	11:20:00	BAR-17	ECC	TO		25	8,125
E191150441	10/18/2007	11:23:00	BUC-16	ECA	TO	OCO	135	48,195
E996953228	10/18/2007	11:26:00	ORT-22	ECA	TO	OCO	1	1,894
E115066962	10/18/2007	11:27:00	GRV-15	ECA	TF	OTF	4	2,892
E357575131	10/18/2007	11:38:00	WLK-15	ECA		GCB	541	498,802
E087280405	10/18/2007	11:40:00	DGR-13	ECA	TO	OCO	979	254,540
E733576333	10/18/2007	11:43:00	PAT-15	ECC	TF	OFC	35	19,670
E697701812	10/18/2007	11:45:00	STA-16	EBJ	TF	OCO	21	1,638
E216758498	10/18/2007	11:48:00	YEL-27	ECC	TF		50	38,500
E045040084	10/18/2007	11:51:00	BLU-13	ECC	TF	OCO	27	3,213
E314161945	10/18/2007	11:55:00	MVW-13	EBJ	TF	UOT	512	232,960
E889407400	10/18/2007	11:58:00	GAR-13	ECA	TO	OCO	44	20,328
E919601135	10/18/2007	11:59:00	DGR-15	ECA		DNO	1	691
E915044737	10/18/2007	12:00:00	GWR-16	EBI	TF	OCO	25	3,000
E494752322	10/18/2007	12:03:00	LAC-17	ECC	TF	OCO	2,109	126,540
E069530668	10/18/2007	12:03:00	BON-17	ECA	TO	OSW	60	60,720
E425466584	10/18/2007	12:05:00	TOL-15	EBD	TO	OCO	30	2,400
E425856692	10/18/2007	12:05:00	RIT-16	EAC	TO	OTF	2	100
E841243798	10/18/2007	12:07:00	LUH-14	ECC	TF	OCO	2,235	241,380
E134518951	10/18/2007	12:19:00	ORT-23	ECA	TO	OCO	2,682	413,028
E064512136	10/18/2007	12:25:00	SLA-15	EAA	TO	OTF	5	275
E474376233	10/18/2007	12:26:00	SMR-24	ECA	EF	OTF	7	175
E839348521	10/18/2007	12:26:00	NLM-15	EAC	TO	OCO	313	47,576
E887567330	10/18/2007	12:28:00	RHO-13	ECA	TF	OFC	266	112,252
E998866496	10/18/2007	12:29:00	RHO-15	ECA		OFC	50	60,050
E471539368	10/18/2007	12:32:00	SEQ-22	EBI	TF	OCO	189	284,067
E014903394	10/18/2007	12:39:00	BON-16	ECA	TF	OFU	123	91,143
E141953747	10/18/2007	12:39:00	BDI-13	EBI	TF	OCO	90	8,280
E269948063	10/18/2007	12:42:00	ELD-27	ECC	TF	OFU	1	528
E277273023	10/18/2007	12:44:00	KAP-13	ECA	TO	OCO	9	11,214
E653678319	10/18/2007	12:48:00	HEM-16	ECA	TO	OSW	0	0
E722533778	10/18/2007	12:50:00	VIS-23	EAA	EF	UPC	3	1,245
E374792817	10/18/2007	12:51:00	TIL-25	ECA	TF	OTF	6	4,554
E484089432	10/18/2007	12:53:00	NLM-12	EAC	TO	OTF	1	166
E938050801	10/18/2007	12:54:00	WAB-13	EBI	TF	OCO	17	14,382
E180467327	10/18/2007	12:57:00	NLM-16	EAC	EF	OCO	17	9,673
E025863117	10/18/2007	12:57:00	HAP-16	EAA	TF	OCO	57	8,811
E462838880	10/18/2007	13:05:00	YEL-25	ECC	TF		24	16,056
E418257218	10/18/2007	13:07:00	HOL-15	ECA	TF	OCO	50	37,150
E870911367	10/18/2007	13:09:00	ORT-25	ECA	TO	OCO	1,280	129,280
E072888613	10/18/2007	13:11:00	LMD-16	EBJ	TF	OCO	129	108,360
E106611443	10/18/2007	13:11:00	WIS-12	EBF	TF	OCO	29	3,451
E503486901	10/18/2007	13:11:00	ELD-25	ECC	TF	OCO	289	160,395

Qualifying Storm Event
October 18, 2007

Notification	Date	Time	Circuit	Area	Cause	Equipment	Cust Outs	Cust Mins
E861839999	10/18/2007	13:18:00	GAR-16	ECA	TO	OCO	1,832	1,093,704
E740440215	10/18/2007	13:25:00	RHO-16	ECA	TO	OCO	2,347	762,775
E166709714	10/18/2007	13:28:00	LUH-15	ECC	TO	OCO	522	11,484
E415032406	10/18/2007	13:29:00	FRU-25	ECA	TF	OTF	41	23,411
E659538562	10/18/2007	13:29:00	CUM-15	EBI	TF	OCO	9	5,274
10773529	10/18/2007	13:29:00	WOB-27	EAA	BA	OFU	6	550
E088230024	10/18/2007	13:32:00	LON-23	ECC	UN		79	33,812
E453745795	10/18/2007	13:32:00	NNO-12	EBJ	TO	OCO	398	178,304
E983349171	10/18/2007	13:36:00	LWS-15	EBJ	TO	OCO	4	184
E652457265	10/18/2007	13:41:00	CHA-12	ECC	TO		9	9,018
E440394242	10/18/2007	13:43:00	EDG-13	ECA		OFC	38	31,046
E637694587	10/18/2007	13:44:00	KAP-16	ECA	TF	OFU	10	14,560
E405095374	10/18/2007	13:44:00	RAI-11	ECC	TF	OCO	9	1,161
E086066892	10/18/2007	13:45:00	MIR-13	EBF	TO	OCO	688	134,160
E982023064	10/18/2007	13:45:00	WOL-23	ECC	TF	OCO	2,849	797,720
E719299906	10/18/2007	13:47:00	HOB-15	EBI	TO	OCO	33	14,289
E115148261	10/18/2007	13:49:00	FRA-16	ECD	TO	OCO	72	137,922
E002660904	10/18/2007	13:50:00	DES-15	EBJ	TO	OCO	314	21,980
E755032348	10/18/2007	13:50:00	EDG-16	EBJ	TO	OCO	137	27,400
E955300970	10/18/2007	13:50:00	FRA-12	ECD	TO	OCR	382	258,232
E165580238	10/18/2007	13:50:00	FRA-13	ECD	TO	OSW	605	555,390
E957045233	10/18/2007	13:51:00	DES-13	EBJ	TO	OCO	393	107,682
E774144908	10/18/2007	13:51:00	LON-26	ECC	TF		3	2,424
E353773154	10/18/2007	13:51:00	EDG-16	ECA	TO	OCO	469	327,831
E284127935	10/18/2007	13:51:00	MHT-13	EBJ	TF	OCO	1,431	442,179
E307395471	10/18/2007	13:51:00	HEM-15	ECA	TO		66	65,934
E224958233	10/18/2007	13:52:00	SWI-17	ECC	TO		50	27,650
E460513093	10/18/2007	13:52:00	MHT-15	EBJ	TO	OCO	1,568	482,944
E582848547	10/18/2007	13:53:00	FRA-16	ECD	TO	OCO	100	10,800
E956517078	10/18/2007	13:54:00	LUH-14	ECC	TF		15	12,495
E928220035	10/18/2007	13:54:00	ROC-25	ECC	TF	OCO	65	27,690
E529365875	10/18/2007	13:54:00	DES-12	EBJ	TF	OCO	447	121,137
E034056938	10/18/2007	13:54:00	VAS-13	EBL	TO	OCR	50	1,650
E735357842	10/18/2007	13:54:00	MAN-15	ECD	TO	OFU	44	2,508
E765934655	10/18/2007	13:55:00	NNO-13	EBJ	TO	OCO	27	11,475
E613451632	10/18/2007	13:56:00	STW-15	ECA	TO	OCO	1,614	264,696
E649778822	10/18/2007	13:57:00	FRG-26	ECC	TO	OCO	1,383	911,439
E810565061	10/18/2007	13:57:00	PLU-24	ECC	UN		3	765
E465873187	10/18/2007	13:58:00	SME-15	EBE	TO	OCO	140	24,080
E852566460	10/18/2007	13:58:00	ROL-15	EBJ	TO	OCO	30	16,260
E849728705	10/18/2007	13:59:00	CED-13	ECA			43	28,423
E705918876	10/18/2007	13:59:00	GRI-16	ECC	TF		11	5,566
E185140214	10/18/2007	14:00:00	DES-16	EBJ	TO	OCO	1,206	162,810
E909041478	10/18/2007	14:00:00	MIR-15	EBF	EF	OCO	18	1,620
E166502949	10/18/2007	14:00:00	DEC-17	ECC	UN		22	23,826
E894359919	10/18/2007	14:01:00	MCA-16	ECC	TF	OCO	1,093	375,992
E010625869	10/18/2007	14:02:00	PLG-13	ECC	TO		18	12,294
E846734652	10/18/2007	14:03:00	THU-15	ECC	UN		15	3,750
E952628034	10/18/2007	14:04:00	KNT-25	EBJ	TF	OCO	11	20,152

Qualifying Storm Event
October 18, 2007

Notification	Date	Time	Circuit	Area	Cause	Equipment	Cust Outs	Cust Mins
E444032935	10/18/2007	14:06:00	EDG-12	EBJ	TF	OCO	11	3,729
E138527037	10/18/2007	14:06:00	KCR-17	EBJ	TF	OCO	73	87,162
E836479036	10/18/2007	14:06:00	BDI-15	EBI	TF	OCO	68	16,932
E159955818	10/18/2007	14:07:00	DGR-16	ECA	TF		120	85,560
E264847243	10/18/2007	14:08:00	GRI-13	ECC	TF	OCO	401	109,072
E408583044	10/18/2007	14:08:00	LUH-15	ECC	TF	OCO	7	4,564
E519262910	10/18/2007	14:08:00	BON-13	ECA		OTR	150	106,800
E236776393	10/18/2007	14:08:00	HAZ-16	EBE	TO	OCO	2,399	316,668
E432516563	10/18/2007	14:08:00	FRG-25	ECC	UN		20	19,640
E420897274	10/18/2007	14:08:00	ELL-14	EBJ	TF	OCO	54	29,808
E692851841	10/18/2007	14:09:00	JHO-13	ECC	UN		40	19,320
E704621075	10/18/2007	14:10:00	HEM-13	ECA		OFU	366	413,580
E914565595	10/18/2007	14:11:00	MKI-17	ECC	TO		50	17,650
E581383819	10/18/2007	14:11:00	WIN-12	ECE	TO	OCO	1,167	169,744
E114992545	10/18/2007	14:11:00	FRA-15	ECD	TO	OCR	402	483,204
E595041837	10/18/2007	14:12:00	LOL-21	ECD	TO	OCO	1,448	1,146,816
E874105357	10/18/2007	14:12:00	LEA-17	EBI	TF	OPO	952	455,056
E889353805	10/18/2007	14:12:00	WIN-13	ECE	TO	OFU	1,182	249,402
E387976271	10/18/2007	14:13:00	COL-23	EBE	TO	OCO	495	62,865
E280499817	10/18/2007	14:13:00	SIL-15	ECD	TF	OCO	41	75,850
E308760828	10/18/2007	14:14:00	LMD-13	EBJ	TF	OFC	59	75,933
E499316716	10/18/2007	14:14:00	GRA-26	EBJ	TO	OCO	22	8,932
E637246420	10/18/2007	14:14:00	LTA-18	ECA		OHR	338	127,088
E269036160	10/18/2007	14:14:00	MKI-15	ECC	TF	OCO	99	29,799
E154375039	10/18/2007	14:14:00	NNO-15	EBJ	TO	OCO	665	266,000
E212891061	10/18/2007	14:15:00	SOO-25	EBI	TF	OCO	547	416,814
E776146222	10/18/2007	14:15:00	TAN-13	ECC	TO		2,099	461,780
E193256564	10/18/2007	14:15:00	OBY-17	ECC	TF	OCO	22	15,620
E423793062	10/18/2007	14:16:00	TAN-16	ECC	TO		1,080	236,520
E889765542	10/18/2007	14:17:00	LWS-14	EBJ	TF	OCO	546	396,396
E797477610	10/18/2007	14:18:00	PAN-15	EBJ	TF	OCO	64	60,288
E330453095	10/18/2007	14:18:00	TAN-15	ECC	TO		1,134	246,078
E033875410	10/18/2007	14:19:00	CHI-12	ECD	TO	OCO	2,759	1,757,483
E333551237	10/18/2007	14:20:00	MAP-16	EBF	TO	OCO	814	32,560
E561803242	10/18/2007	14:20:00	NRU-27	EBE	TO	OCO	21	16,590
E588291012	10/18/2007	14:20:00	PLA-23	EBF	TF	OFU	45	19,350
E631216516	10/18/2007	14:21:00	PRE-14	EBE	EF	OCO	90	63,990
E836238315	10/18/2007	14:21:00	NOR-26	EBD	EF	OCO	28	7,756
E291223141	10/18/2007	14:22:00	FAC-14	EBE	TO	CDH	4	7,192
E244246566	10/18/2007	14:22:00	SOO-25	EBJ	TF	OCO	52	39,260
E164889766	10/18/2007	14:23:00	CWD-22	EBD	TO	OCO	1,279	104,878
E973221253	10/18/2007	14:23:00	LYO-12	EBJ	TF	OCO	577	504,875
E894327707	10/18/2007	14:23:00	ROS-21	EBD	TO	OCO	2,234	82,658
E384093879	10/18/2007	14:23:00	RHO-17	ECA	TF	OCO	22	10,868
E949611552	10/18/2007	14:24:00	CLE-14	EBH	TF	OSV	3	288
E381496194	10/18/2007	14:24:00	SEQ-22	EBJ	TF	OCO	182	244,062
E724410755	10/18/2007	14:25:00	THU-16	ECC	TO		3	1,953
E324549587	10/18/2007	14:25:00	LAT-13	EBJ	TF	OFC	137	220,844
E469214609	10/18/2007	14:25:00	PAN-16	EBJ	TO	OCO	8	4,520

Qualifying Storm Event
October 18, 2007

Notification	Date	Time	Circuit	Area	Cause	Equipment	Cust Outs	Cust Mins
E082678289	10/18/2007	14:26:00	EDG-15	ECA	TO	OCO	85	46,240
E939203818	10/18/2007	14:26:00	LMC-23	EBF	TO	OCO	85	13,940
E343883936	10/18/2007	14:26:00	RAI-12	ECC	TF	OCO	24	9,816
E189934227	10/18/2007	14:27:00	HAZ-12	EBE	TF	OCO	169	89,232
E914767185	10/18/2007	14:27:00	BON-15	ECA	TF	OFC	1	1,833
E398491430	10/18/2007	14:28:00	MAP-15	EBF	EF	OCO	236	277,064
E156844419	10/18/2007	14:28:00	PHA-17	EBE	EF	OCO	28	30,996
E529258954	10/18/2007	14:28:00	NRU-23	EBE	EF		80	120,240
E242281015	10/18/2007	14:28:00	VAS-22	EBL	TO	OCO	1,311	178,296
E989622461	10/18/2007	14:29:00	CAP-13	ECC	TF		617	253,587
E622333688	10/18/2007	14:29:00	PEA-17	EBJ	TF	OCO	169	250,073
E465220395	10/18/2007	14:30:00	EGT-27	EBE	TF	OTF	6	1,752
E633937396	10/18/2007	14:30:00	SHD-18	EBI	TO	OCO	242	31,460
E260312757	10/18/2007	14:30:00	BDI-12	EBI	TF	OCO	694	305,360
E992414761	10/18/2007	14:31:00	PAT-13	ECC	TF	OCO	23	10,971
10772848	10/18/2007	14:33:00	PLU-24	ECC	EF	OCO	0	0
E953394687	10/18/2007	14:33:00	ING-13	EBD	TF	OCO	301	349,762
E548537109	10/18/2007	14:34:00	SEQ-13	EBI	TF	OCO	72	46,512
E664504501	10/18/2007	14:34:00	EVA-27	EBJ	TO	OCO	127	52,070
E314776317	10/18/2007	14:34:00	SEQ-13	EBJ	TF	OCO	1,958	1,264,868
E786156652	10/18/2007	14:34:00	PIK-21	EBF	TO	OCO	357	120,666
E388645597	10/18/2007	14:34:00	VAS-23	EBL	TO	OCO	3,394	617,708
E446910774	10/18/2007	14:34:00	ORC-17	EBJ	TF	OCO	53	21,253
E719228959	10/18/2007	14:35:00	LEA-16	EBI	TF	OCO	1,963	902,980
E976373195	10/18/2007	14:35:00	NRU-26	EBE	EF	OTF	2	1,490
E574091964	10/18/2007	14:36:00	ROC-26	ECC	TF	OCO	5	2,460
E197035862	10/18/2007	14:36:00	SEQ-16	EBJ	TF	OCO	214	139,956
E656568308	10/18/2007	14:36:00	MTV-16	EAC	TF	OFC	4	1,356
E812603371	10/18/2007	14:36:00	LWS-14	EBI	TF	OCO	1,067	754,369
E923278893	10/18/2007	14:37:00	MAP-13	EBF	TF	OCO	77	56,891
E909060809	10/18/2007	14:38:00	QUI-25	ECE	TO	OFC	1	1,624
E631864657	10/18/2007	14:39:00	QUI-25	ECF	TO	OFU	35	3,885
E027465737	10/18/2007	14:42:00	RDO-13	EBJ	TF	OCO	787	746,076
E210757146	10/18/2007	14:42:00	NRU-25	EBE	TO	OCO	66	75,768
E274901601	10/18/2007	14:42:00	CHI-12	ECE	TO	OCO	2	2,856
E506426704	10/18/2007	14:42:00	FWY-15	EBJ	TO	OCO	69	32,499
E143303969	10/18/2007	14:42:00	WAU-22	EBI	TF	OCO	35	26,495
E241307688	10/18/2007	14:43:00	LYO-15	EBJ	TF	OPO	387	347,139
E562399938	10/18/2007	14:43:00	WLS-16	EAC	TO	OPO	37	16,687
E535133153	10/18/2007	14:44:00	AIR-25	ECC	TF	OCO	246	36,408
E721404543	10/18/2007	14:45:00	MVW-17	EBJ	TF	OCO	11	3,135
E691896345	10/18/2007	14:45:00	HOB-16	EBI	TF	OCO	568	215,840
E748520379	10/18/2007	14:45:00	SKY-25	EBD	TF	OCO	5	2,250
E100291632	10/18/2007	14:45:00	WCA-16	EBJ	TO	OCO	9	4,455
E258024625	10/18/2007	14:46:00	PIK-21	EBD	TO	OCO	9	2,934
E901164133	10/18/2007	14:47:00	MIL-17	ECE	TO	OFC	56	76,608
E918810692	10/18/2007	14:47:00	BRI-14	EAA	TF	OCO	58	20,764
E303093678	10/18/2007	14:48:00	MKI-14	ECC	TO		7	2,954
E659756405	10/18/2007	14:49:00	HOB-16	EBJ	TF	OCO	4	1,744

Qualifying Storm Event
October 18, 2007

Notification	Date	Time	Circuit	Area	Cause	Equipment	Cust Outs	Cust Mins
E306303902	10/18/2007	14:50:00	MIL-22	ECE	TO	OCO	292	378,140
E367322124	10/18/2007	14:50:00	BRE-37	ECD	TO	OCO	389	343,876
E048493396	10/18/2007	14:50:00	FWY-11	EBJ	TO	OCO	35	13,300
E459393234	10/18/2007	14:50:00	KNT-37	EBJ	TF	OCO	40	25,040
E721371764	10/18/2007	14:51:00	KAP-15	ECA		OFC	50	68,700
E089066760	10/18/2007	14:53:00	PIP-25	EBI	TO	OCO	73	38,471
E195964032	10/18/2007	14:53:00	PIP-26	EBI	TF	OCO	1,708	493,612
E726754457	10/18/2007	14:53:00	WOO-23	ECA	TF	OSV	1	337
E714517814	10/18/2007	14:55:00	OSC-23	EBI	TF	OCO	66	39,072
E978998949	10/18/2007	14:55:00	PIP-26	EBJ	TF	OCO	42	12,054
E719059095	10/18/2007	14:55:00	CLY-25	EBE	TF	OFU	25	28,875
E395425312	10/18/2007	14:56:00	RPT-22	ECD	TF	OCO	25	44,275
E101181564	10/18/2007	14:56:00	KLA-17	EBF	TO	OCO	1,232	123,200
E134002287	10/18/2007	14:57:00	MAN-13	ECD	TO	OFU	1,078	721,182
E778286648	10/18/2007	14:58:00	GBK-13	EAD	TF	OCO	10	910
E352577469	10/18/2007	14:58:00	LYO-15	EBI	TF	OCO	7	6,174
E213588582	10/18/2007	14:58:00	SKE-23	ECE	TO	OCO	169	102,414
E310665561	10/18/2007	14:58:00	BLU-13	ECC	TF	OCO	87	50,112
E396061004	10/18/2007	14:59:00	PTL-13	ECF	TO	OFU	26	2,444
E201819053	10/18/2007	14:59:00	IRO-13	ECF	TO	OCO	122	28,076
E822614738	10/18/2007	14:59:00	SKE-26	ECE	TO	OCO	198	116,028
E659223522	10/18/2007	14:59:00	PGA-13	ECE	TO	OCO	663	391,833
E129863718	10/18/2007	15:00:00	NLM-15	EAC	TO	OCO	66	24,222
E680611197	10/18/2007	15:02:00	BAR-16	ECC	TF		8	2,744
E255113066	10/18/2007	15:02:00	SKE-22	ECE	TF	OCO	1,946	1,213,523
E510222278	10/18/2007	15:02:00	SAH-15	EBD			106	46,428
E831872941	10/18/2007	15:02:00	SHD-16	EBI	TO	OCO	156	57,408
E562629730	10/18/2007	15:03:00	PLA-23	EBD			50	29,850
E853321478	10/18/2007	15:03:00	PMA-16	ECE	TO	OCO	276	162,012
E388615628	10/18/2007	15:03:00	ZEN-17	EBJ	TF	OCO	22	5,852
E450630159	10/18/2007	15:03:00	WIS-13	EBF	TF	OCO	1	605
E230205148	10/18/2007	15:04:00	PGA-12	ECE	TF	OCO	544	318,784
E906447613	10/18/2007	15:04:00	FWD-17	EBJ	TF	OCO	120	88,560
E310361979	10/18/2007	15:05:00	PAN-12	EBJ	TF	OCR	4	3,196
E457109951	10/18/2007	15:05:00	VWY-13	EAA	TF	OCO	14	1,765
E587677465	10/18/2007	15:06:00	ROL-16	EBJ	TO	OCO	114	54,036
E410707546	10/18/2007	15:06:00	POU-16	ECE	TO	OPO	115	102,580
E121118321	10/18/2007	15:06:00	ORT-23	ECA		OFC	10	4,240
E384371599	10/18/2007	15:06:00	NUG-26	EAA	TF	OTF	2	208
E158754096	10/18/2007	15:06:00	IRO-13	ECE	TO	OCO	1	354
E575029054	10/18/2007	15:07:00	CHR-25	ECE	TO	OFC	227	320,291
E479514213	10/18/2007	15:08:00	KNT-33	EBJ	TO	OFU	11	4,917
E104904904	10/18/2007	15:08:00	BRO-15	EAD	EF	OCO	45	37,935
E023726344	10/18/2007	15:09:00	MST-26	EBI	TF	OSV	354	208,860
E166840246	10/18/2007	15:09:00	KLA-15	EBF	TF	OCO	28	3,528
E852358250	10/18/2007	15:10:00	SIL-16	ECD	TO	OCO	98	56,840
E343440130	10/18/2007	15:11:00	LWS-15	EBI	TO	OTF	3	507
E474781794	10/18/2007	15:11:00	LWS-16	EBI	TF	OCO	5	1,145
E781733544	10/18/2007	15:11:00	LWS-15	EBJ	TO	OCO	90	21,510

Qualifying Storm Event
October 18, 2007

Notification	Date	Time	Circuit	Area	Cause	Equipment	Cust Outs	Cust Mins
E456421689	10/18/2007	15:12:00	SIL-13	ECE	TF	OPO	253	103,224
E981513235	10/18/2007	15:12:00	PMA-12	ECE	TO	OCO	150	88,950
E171774778	10/18/2007	15:13:00	LWS-16	EBJ	TF	OFU	87	61,509
E745050737	10/18/2007	15:16:00	LWS-12	EBI	TF	OCO	1	224
E862809304	10/18/2007	15:16:00	GAR-15	ECA	TF	OCO	24	11,256
E197057677	10/18/2007	15:17:00	SHD-18	EBJ	TF	OPO	4	2,692
E423782787	10/18/2007	15:17:00	PAN-13	EBJ	TO	OCO	648	377,784
E255461448	10/18/2007	15:18:00	GBK-15	EAD	TO	OCO	42	2,982
E678912017	10/18/2007	15:19:00	LWS-13	EBI	TF	OCO	649	244,024
E685374956	10/18/2007	15:19:00	ZEN-25	EBJ	TO	OTF	7	1,701
E718689788	10/18/2007	15:20:00	MUR-13	ECE	TO	OFC	556	192,120
E412147901	10/18/2007	15:20:00	CHI-13	ECD	TF	OCO	648	900,720
E108543976	10/18/2007	15:20:00	BRO-16	EAD	EF	OPO	45	42,660
E717960099	10/18/2007	15:22:00	LGY-15	EAD	TO	OCO	383	68,940
E107830861	10/18/2007	15:22:00	MIR-17	EBI	TF	OCO	9	8,037
E093689228	10/18/2007	15:22:00	FWY-12	EBJ	TF	OCO	1,410	490,680
E142747061	10/18/2007	15:22:00	LWS-13	EBJ	TF	OCO	18	6,714
E233111797	10/18/2007	15:23:00	SHD-15	EBI	TO	OCO	20	7,940
E572529152	10/18/2007	15:23:00	BUC-15	ECA	TO	OFC	6	6,252
E696833993	10/18/2007	15:23:00	ENU-17	EBI	TF	OCO	1	1,222
E675022699	10/18/2007	15:23:00	MUR-15	ECE	TO	OCO	446	100,796
E010328431	10/18/2007	15:24:00	STA-26	EBJ	TF	OCO	13	9,334
E366417810	10/18/2007	15:24:00	AVO-17	EBD	TO	OCO	2	656
E907581293	10/18/2007	15:24:00	ASB-16	EBJ	TO	OCN	3	468
E504010231	10/18/2007	15:25:00	SOU-23	EBJ	TO	OCO	1,710	482,220
E921660121	10/18/2007	15:27:00	LGY-16	EAD	TO	OFC	181	201,453
E767537878	10/18/2007	15:28:00	RJN-13	EBJ	TO	OCO	36	10,080
E939634000	10/18/2007	15:28:00	SIL-17	ECE	TO	OCO	22	31,833
E224530795	10/18/2007	15:28:00	LEA-17	EBJ	TF	OPO	40	16,080
E930802774	10/18/2007	15:29:00	FLD-12	EAD	UN	OCO	9	10,197
E133785549	10/18/2007	15:29:00	SPA-16	ECA	TO	OCO	60	28,860
E484063137	10/18/2007	15:30:00	RDO-12	EBJ	TF	OCO	43	49,020
E362470631	10/18/2007	15:30:00	CHR-22	ECE	TO	OFC	178	224,280
E305348489	10/18/2007	15:31:00	TOL-15	EBD	TO	OCO	21	11,571
E975860892	10/18/2007	15:32:00	PIP-23	EBI	TF	OCO	17	17,986
E430931774	10/18/2007	15:33:00	LEA-15	EBI	TF	OCO	28	27,636
E655837863	10/18/2007	15:35:00	RPT-23	ECD	TO	OCO	5	7,811
E339920956	10/18/2007	15:35:00	SIN-24	ECD	TO	OCO	266	146,034
E280901122	10/18/2007	15:36:00	CPV-15	EAD	TO	OCO	1,731	91,743
E304912452	10/18/2007	15:36:00	LAT-14	EBJ	TF	OCO	33	33,297
E125696485	10/18/2007	15:36:00	FAL-13	EBF			72	41,616
E884923146	10/18/2007	15:40:00	PLA-21	EBF	TF	OTF	4	1,520
E585159685	10/18/2007	15:41:00	CPV-12	EAD	TF	OCO	19	5,282
10776157	10/18/2007	15:42:00	TLN-0098	ECD	TO	OCO	15,817	917,693
E196469697	10/18/2007	15:42:00	FLD-15	EAD	TO	OCO	1,673	463,421
E967702538	10/18/2007	15:42:00	KCR-16	EBJ	TO	OCO	3	414
E431682284	10/18/2007	15:43:00	LGY-12	EAD	TO	OTH	110	24,090
E501979832	10/18/2007	15:43:00	FLD-13	EAD	TF	OCO	75	37,650
E270626036	10/18/2007	15:43:00	NLM-12	EAC	TO	OFU	60	4,260

Qualifying Storm Event
October 18, 2007

Notification	Date	Time	Circuit	Area	Cause	Equipment	Cust Outs	Cust Mins
E733577009	10/18/2007	15:44:00	CPV-13	EAD	TF	OCO	17	5,185
E155359342	10/18/2007	15:44:00	WAY-15	EBD	TO		410	342,800
E897688664	10/18/2007	15:44:00	ASB-13	EBJ	TF	OCO	53	47,594
E975247787	10/18/2007	15:45:00	PAN-14	EBJ	TO	OCO	53	25,705
E946660804	10/18/2007	15:46:00	SBE-25	EBE	TO	OCO	63	17,262
E741913089	10/18/2007	15:47:00	MST-26	EBJ	TF	OSV	11	1,463
E625160152	10/18/2007	15:48:00	PTL-16	ECF	TO	OCO	4	5,148
E359617546	10/18/2007	15:49:00	PRE-11	EBE			102	83,742
E304594726	10/18/2007	15:49:00	WAU-25	EBJ	TF	OCO	13	19,058
E246593546	10/18/2007	15:50:00	VAS-12	EBL	TO	OCO	15	7,200
E124474900	10/18/2007	15:50:00	PMA-15	ECE	TF	OCO	91	49,140
E333718083	10/18/2007	15:52:00	LMC-25	EBF	TO		7	21,245
E859683692	10/18/2007	15:52:00	SWA-13	EAD	TF	OTF	1	243
E103637364	10/18/2007	15:53:00	GRI-15	ECC	TF		15	7,845
E628114275	10/18/2007	15:53:00	POU-15	ECE	TO	OCO	39	9,087
E483169820	10/18/2007	15:54:00	MAN-12	ECD	TO	OCO	289	474,166
E203674008	10/18/2007	15:54:00	LOL-25	ECD	TO	OCO	1,788	958,368
E594932918	10/18/2007	15:54:00	MAN-16	ECD	TO	OFU	585	389,610
E467604464	10/18/2007	15:54:00	MAN-15	ECD	TO	OFU	1,500	1,120,500
E109020864	10/18/2007	15:54:00	LOL-23	ECD	TO	OCO	334	222,444
E806598398	10/18/2007	15:54:00	MAN-12	ECD	TO	OCO	1,400	856,800
E840807237	10/18/2007	15:54:00	LOL-22	ECD	TO	OCO	1,177	630,872
10777805	10/18/2007	15:54:00	FRA-13	ECD	TO	OFC	700	7,700
E572216949	10/18/2007	15:55:00	CHI-15	ECD	TO	OFC	61	82,655
E794924911	10/18/2007	15:55:00	SUM-21	EAC	EF	OCO	1	775
E533497435	10/18/2007	15:56:00	MUR-16	ECE	TO	OCO	7	10,780
E315403845	10/18/2007	15:56:00	LMC-26	EBF			1	919
E374072234	10/18/2007	15:57:00	WIN-15	ECE	TO	OCO	53	101,866
E609109130	10/18/2007	15:57:00	AVO-15	EBD	TO	OCO	209	86,735
E367863903	10/18/2007	15:58:00	SHE-16	ECE	TO	OCO	1,002	257,514
E305942692	10/18/2007	15:58:00	SME-12	EBE			23	9,703
E028046018	10/18/2007	15:58:00	DUV-15	EBD	TO		99	106,524
E181030750	10/18/2007	15:59:00	CAM-23	EBJ	TF	OCO	27	4,887
E007313796	10/18/2007	16:03:00	COT-13	EBD			200	266,200
E239506647	10/18/2007	16:04:00	CEK-14	ECE	TO	OCO	61	82,106
E722080060	10/18/2007	16:04:00	SHE-15	ECE	TO	OFC	125	198,250
E667128794	10/18/2007	16:06:00	ORC-16	EBJ	TF	OPI	24	14,976
E798261891	10/18/2007	16:07:00	RAI-13	ECC	TF	OTF	2	836
E050336762	10/18/2007	16:08:00	BIG-16	EAC	TO	OFC	1,809	166,428
E469737440	10/18/2007	16:09:00	BTR-21	EBE	TO	OCO	13	1,989
E894252118	10/18/2007	16:09:00	LAB-25	EAA	TF	OTF	9	549
E580871023	10/18/2007	16:09:00	TRA-23	ECE	TO	OCO	41	61,131
E474392297	10/18/2007	16:10:00	FAL-15	EBF			2	1,778
E541704372	10/18/2007	16:11:00	MVW-15	EBJ	TF	OCO	65	47,611
E388352601	10/18/2007	16:11:00	MIR-16	EBF	TO	OCO	4	1,852
E025897752	10/18/2007	16:12:00	TRA-26	ECE	TO	OCO	1,812	1,804,704
E793966674	10/18/2007	16:13:00	TRA-22	ECE	TO	OFC	65	103,330
E774649107	10/18/2007	16:14:00	SEQ-17	EBJ	TF	OCO	12	6,612
E589216173	10/18/2007	16:14:00	NBO-22	EBD	TF	OCO	1	503

Qualifying Storm Event
October 18, 2007

Notification	Date	Time	Circuit	Area	Cause	Equipment	Cust Outs	Cust Mins
E622529469	10/18/2007	16:15:00	EVE-23	EBD	TO	OCO	2,392	191,360
E312640290	10/18/2007	16:15:00	SIN-25	ECD	TO	OCO	83	78,435
E271033161	10/18/2007	16:16:00	KWH-25	EBD	TO	OCO	38	15,086
E573944455	10/18/2007	16:16:00	EGT-11	EBE	TF	OTF	7	1,288
E498139701	10/18/2007	16:21:00	MWD-15	EBE	TO	OCO	25	7,725
E916641334	10/18/2007	16:23:00	SPI-16	EBD	TF	OTF	9	3,798
E840368980	10/18/2007	16:23:00	FNW-17	ECD	TO	OCO	2,260	1,145,820
E806895570	10/18/2007	16:23:00	FNW-16	ECD	TO	OCO	1,838	1,009,106
E555939911	10/18/2007	16:24:00	ELL-16	EBI	TO	OCO	10	2,510
E287492497	10/18/2007	16:24:00	HAZ-16	EBE			164	101,680
E752647580	10/18/2007	16:24:00	TOL-17	EBD			70	60,620
E585413154	10/18/2007	16:24:00	FNW-13	ECD	TO	OCO	1,247	437,230
E934739554	10/18/2007	16:24:00	SIN-22	ECD	TO	OCO	29	72,935
E031100444	10/18/2007	16:26:00	HKX-16	EAC	EF	OTR	40	31,960
E778526564	10/18/2007	16:26:00	FNW-15	ECD	TO	OCO	2,065	640,185
E377229591	10/18/2007	16:26:00	MUR-15	ECD	TO	OCO	17	8,568
E068260538	10/18/2007	16:26:00	MIL-17	ECE	TO	OCO	4	6,484
E630066989	10/18/2007	16:27:00	DES-15	EBJ	TO	OCO	234	28,782
E120164818	10/18/2007	16:29:00	UHL-25	EBD	TF	OCO	33	5,808
10776158	10/18/2007	16:30:00	TLN-0098	ECD	TO	OCO	0	0
E379542979	10/18/2007	16:30:00	DES-16	EBJ	TF	OCO	154	18,480
E353089046	10/18/2007	16:32:00	VAS-13	EBL	TO	OCO	144	1,728
E793451575	10/18/2007	16:32:00	ROL-13	EBJ	TO	OCO	5	1,215
E954653904	10/18/2007	16:33:00	ING-15	EBD			896	215,936
E894556932	10/18/2007	16:33:00	PTL-13	ECF	TO	OPO	48	19,944
E343249454	10/18/2007	16:33:00	MCW-17	ECE	TO	OCO	331	195,952
E085765198	10/18/2007	16:33:00	RED-22	EBD			35	25,445
E023633820	10/18/2007	16:34:00	NHL-16	EBD			6	7,026
E445609410	10/18/2007	16:35:00	CPV-15	EAD	TO	OCO	8	4,680
E297495753	10/18/2007	16:36:00	NUG-25	EAA	TF	OSV	3	282
E945816516	10/18/2007	16:36:00	GBK-15	EAD	TV	RCL	49	13,965
E372792595	10/18/2007	16:37:00	VAS-12	EBL	TO	OCO	1	453
E971396354	10/18/2007	16:37:00	PAT-17	ECC	TF	OTF	4	1,612
E347378681	10/18/2007	16:37:00	CEK-16	ECD	TO	OCO	105	258,720
E054796310	10/18/2007	16:39:00	CEK-16	ECE	TO	OCO	262	127,856
E527313673	10/18/2007	16:41:00	BHL-12	ECE	TO	OCO	51	25,449
E276127793	10/18/2007	16:41:00	BDI-16	EBI	TO	OCO	9	2,880
E139509130	10/18/2007	16:41:00	GBK-13	EAD	EF	OCO	56	16,520
E504021672	10/18/2007	16:42:00	LMD-15	EBJ	TF	OCO	5	6,990
E333617496	10/18/2007	16:44:00	VAS-22	EBL	TO	OFU	48	48
E942325948	10/18/2007	16:45:00	BDI-13	EBI	TO	OCO	60	49,380
E654345224	10/18/2007	16:45:00	NBO-26	EBD			294	187,866
E085944940	10/18/2007	16:46:00	PHA-16	EBE	TO	OSV	4	1,856
E100532949	10/18/2007	16:46:00	LAC-13	ECC	TF		66	40,194
E515359737	10/18/2007	16:47:00	VAS-23	EBL	TO	OCO	1	793
E590508457	10/18/2007	16:47:00	SOO-27	EBJ	TF	OCO	20	20,660
E333797860	10/18/2007	16:48:00	SHD-18	EBI	TF	OTR	152	156,864
E729734369	10/18/2007	16:49:00	SWD-13	ECE	TO	OCO	52	48,152
E869676460	10/18/2007	16:49:00	GAG-11	EAC	TO	OTR	1	771

Qualifying Storm Event
October 18, 2007

Notification	Date	Time	Circuit	Area	Cause	Equipment	Cust Outs	Cust Mins
E617510596	10/18/2007	16:52:00	QUI-26	ECF	TO	OCO	30	11,310
E357616030	10/18/2007	16:53:00	ZEN-23	EBJ	TF	OCO	17	1,649
E729146197	10/18/2007	16:54:00	BHL-13	ECE	TO	OCO	91	44,317
E465846575	10/18/2007	16:54:00	SHE-17	ECE	TO	OCO	39	63,570
E684633253	10/18/2007	16:54:00	SAH-13	EBD	TO	OCO	2,000	122,000
E899884650	10/18/2007	16:54:00	SWD-12	ECE	TO	OCO	2	2,744
E234047114	10/18/2007	16:56:00	BIG-12	EAC	TO	OFU	1,017	57,969
E222077397	10/18/2007	16:56:00	MCW-15	ECD	TO	OFC	7	18,165
E510471259	10/18/2007	16:57:00	ING-16	EBD			238	164,934
E249399022	10/18/2007	16:58:00	HAM-13	EAC	TO	OFU	817	125,001
E944684551	10/18/2007	16:58:00	CEK-15	ECE	TO	OFC	154	212,828
E662478461	10/18/2007	17:00:00	PMA-13	ECE	TO	OCO	125	285,000
E160562208	10/18/2007	17:01:00	WAY-13	EBD	TF	OCO	70	50,190
E340948166	10/18/2007	17:01:00	MCW-15	ECE	TO	OCO	92	170,936
E302071582	10/18/2007	17:03:00	HAZ-13	EBE	TF	OSV	2	2,224
E368590770	10/18/2007	17:05:00	BHL-16	ECE	TO	OCO	1,311	626,658
E317535198	10/18/2007	17:05:00	WAY-16	EBD	TF		29	39,005
E670817208	10/18/2007	17:05:00	HGX-12	EAC	TF	OSV	1	364
E459973872	10/18/2007	17:06:00	DGR-13	ECA		OFC	7	5,558
E688754401	10/18/2007	17:08:00	BHL-15	ECE	TO	OCO	110	52,250
E734569031	10/18/2007	17:09:00	RPT-15	ECD	TO	OCO	45	81,225
E307385323	10/18/2007	17:09:00	MIR-13	EBF	TO	OCO	18	3,168
E980831850	10/18/2007	17:10:00	RDO-16	EBJ	TF	OTF	4	4,160
E052503801	10/18/2007	17:12:00	CRE-16	EAD	TO	OFC	3	1,239
E482398665	10/18/2007	17:12:00	MIR-15	EBF	TF	OTF	3	744
E329236380	10/18/2007	17:14:00	MCW-14	ECE	TO	OCO	12	25,752
E197281348	10/18/2007	17:15:00	MTV-17	EAC	TO	OFU	26	6,526
E292882797	10/18/2007	17:18:00	CEK-17	ECE	TF	OCO	5	11,765
E820283512	10/18/2007	17:19:00	ROS-15	EBD	EF	OTF	2	442
E585054738	10/18/2007	17:21:00	SKI-13	EBD	TO		1,038	476,442
E926883993	10/18/2007	17:24:00	RPT-26	ECD	TO	OCO	65	75,280
E849755680	10/18/2007	17:27:00	FCH-24	ECA	TF	OSV	3	819
E284869898	10/18/2007	17:27:00	NOR-27	EBD	TO	OCO	47	16,826
E913002267	10/18/2007	17:27:00	TRA-25	ECE	TO	OCO	47	90,381
E961381056	10/18/2007	17:32:00	MAN-15	ECD	TO	OFU	1	1,129
E875189992	10/18/2007	17:32:00	VAS-13	EBL	TO	OCO	56	83,888
E215699040	10/18/2007	17:34:00	PRI-23	ECC			1	346
E805328177	10/18/2007	17:36:00	COL-23	EBE	TF	OCO	178	223,212
E109592833	10/18/2007	17:38:00	BLU-17	ECC	TF		4	1,164
E162067484	10/18/2007	17:43:00	KNM-26	EBD	TO	OCO	1,523	360,951
E996564168	10/18/2007	17:43:00	HWD-26	EBD	TF	OCO	8	2,176
E369529255	10/18/2007	17:44:00	EDG-16	EBJ	TF	OCO	25	6,400
E974880410	10/18/2007	17:44:00	SOO-23	EBI	TF	OTF	1	1,056
E361285753	10/18/2007	17:50:00	EVE-23	EBD	TF	OCO	8	1,752
E990176628	10/18/2007	17:51:00	FWY-13	EBJ	TF	OTF	1	299
E210111321	10/18/2007	17:52:00	CWD-24	EBD	TO	OCO	8	1,704
E915988440	10/18/2007	18:02:00	WIN-13	ECE	TO	OCO	83	125,745
E704245178	10/18/2007	18:05:00	JUA-13	EBD	TF	OCO	1,507	128,095
E882837312	10/18/2007	18:21:00	BUC-16	ECA	TO	OCO	1	969

Qualifying Storm Event
October 18, 2007

Notification	Date	Time	Circuit	Area	Cause	Equipment	Cust Outs	Cust Mins
E183878154	10/18/2007	18:28:00	VAS-23	EBL	TO	OFU	35	945
E053072507	10/18/2007	18:31:00	LHL-25	EBE	TF	OTF	6	3,594
E219217086	10/18/2007	18:32:00	PHA-13	EBE	EF	OFU	11	1,738
E345944930	10/18/2007	18:32:00	EPO-12	ECD	TO	OCO	1,340	392,280
E937715873	10/18/2007	18:32:00	EPO-13	ECD	TO	OFU	54	29,915
E586354143	10/18/2007	18:32:00	EPO-12	ECD	TO	OCO	39	102,609
E170597138	10/18/2007	18:32:00	EPO-16	ECD	TO	OCO	560	85,230
E096013886	10/18/2007	18:32:00	EPO-13	ECD	TO	OCO	1,600	342,400
E325332917	10/18/2007	18:32:00	EPO-15	ECD	TO	OPO	1,040	220,750
E895097936	10/18/2007	18:33:00	MED-36	EBE	TF	OTF	5	3,135
E434509629	10/18/2007	18:35:00	VAS-22	EBL	TO	OFU	15	1,905
E384280106	10/18/2007	18:36:00	WAU-23	EBI	TF	OCO	2	604
E777000152	10/18/2007	18:36:00	UHL-23	EBD	TF	OFU	1	188
E579196949	10/18/2007	18:37:00	KEN-13	EAA	TO	UTC	1	43
E566682919	10/18/2007	18:38:00	WIS-12	EBF	TO	OCO	8	1,920
E833070072	10/18/2007	18:38:00	JUA-12	EBD	TF	OTF	4	908
E229149302	10/18/2007	18:41:00	GRI-13	ECC	TF	OCO	1,363	179,916
E836727883	10/18/2007	18:42:00	DUT-16	ECA			10	2,880
E135430361	10/18/2007	18:43:00	KCR-16	EBJ	TF	OCO	21	15,477
E620005324	10/18/2007	18:45:00	KEA-14	ECF	TF	OSV	1	83
E521903895	10/18/2007	18:48:00	PCR-14	EBE	TF	OTF	5	1,035
E099782311	10/18/2007	18:57:00	SOO-23	EBJ	TF	OJU	1	1,033
E447592762	10/18/2007	18:58:00	HOU-25	EBD	TF	OTF	6	2,532
E465029567	10/18/2007	19:00:00	RHO-16	ECA	TF	OCO	10	2,100
E607288834	10/18/2007	19:01:00	SHE-26	ECE	TO	OCO	45	72,270
E671165891	10/18/2007	19:04:00	LGY-15	EAD	TO	OCO	1	208
E281662765	10/18/2007	19:06:00	NLM-13	EAC	EF	OPO	2	648
E942040829	10/18/2007	19:07:00	BDI-15	EBI	TF	OCO	3	684
E145099565	10/18/2007	19:11:00	NUG-26	EAA	TF	OCO	50	16,400
E709586857	10/18/2007	19:15:00	LWS-15	EBJ	TF	OPO	24	14,520
E997343830	10/18/2007	19:18:00	SHA-15	ECA		OTR	4	1,728
E541488607	10/18/2007	19:22:00	LGY-12	EAD	EF	OCO	108	8,964
E247561567	10/18/2007	19:23:00	SHE-25	ECE	TF	OCO	50	75,200
E863716802	10/18/2007	19:23:00	SIL-13	ECD	TO	OCO	2	2,474
E492607133	10/18/2007	19:27:00	GRA-15	EBJ	TO	OCO	14	1,078
E239558064	10/18/2007	19:29:00	FWD-13	EBJ	TF	OCO	30	20,160
E039199470	10/18/2007	19:31:00	PIP-26	EBJ	TF	OCO	9	4,581
E266523456	10/18/2007	19:32:00	RHO-13	ECA		OCB	11	8,063
E178362164	10/18/2007	19:36:00	BUC-16	ECA		OFC	21	26,964
E948826256	10/18/2007	19:36:00	LGY-13	EAD	TF	OTF	2	18
E057353264	10/18/2007	19:57:00	PIP-26	EBI	TF	OCO	14	3,066
E649541515	10/18/2007	20:03:00	MCA-16	ECC	TF	OSV	1	336
E536664038	10/18/2007	20:06:00	MTH-15	EBI	TF	OFC	72	101,088
E244288349	10/18/2007	20:08:00	SOU-23	EBJ	TF	OFU	112	19,264
E429402515	10/18/2007	20:13:00	POU-15	ECE	TO	OCO	27	32,886
E155494645	10/18/2007	20:17:00	MVW-13	EBJ	TF	OCR	468	283,608
E274209304	10/18/2007	20:20:00	STA-17	EBJ	TF	OCO	8	192
E184863021	10/18/2007	20:21:00	BRS-13	EAC	TO	OFU	16	4,160
E559121378	10/18/2007	20:32:00	KNM-23	EBD	TO	OCO	3	2,667

Qualifying Storm Event
October 18, 2007

Notification	Date	Time	Circuit	Area	Cause	Equipment	Cust Outs	Cust Mins
E861743278	10/18/2007	20:38:00	KNM-25	EBD			42	31,584
E837402298	10/18/2007	20:44:00	LGY-12	EAD	EF	OTF	1	19
E859945555	10/18/2007	20:55:00	GAR-13	ECA	TF	OCO	2	830
E071667506	10/18/2007	20:57:00	DES-12	EBJ	TF	OCO	6	492
E587579757	10/18/2007	20:59:00	MCA-13	ECC	TF		197	85,498
E283596012	10/18/2007	21:02:00	HLC-23	EAD	EF	OTF	1	183
E844281366	10/18/2007	21:03:00	GRI-13	ECC	TF		15	4,590
E994212748	10/18/2007	21:03:00	LWS-16	EBI	TF	OTF	3	1,071
E334254360	10/18/2007	21:03:00	LON-23	ECC	TO		15	5,670
E370351380	10/18/2007	21:15:00	JUA-14	EBD	TO		157	105,975
E984740770	10/18/2007	21:24:00	GBK-15	EAD	EF	OTF	1	53
E484148496	10/18/2007	21:42:00	HOB-15	EBI	TO	OTF	2	46
E368112606	10/18/2007	22:01:00	MUR-15	ECE	TO	OCO	3	507
E984144529	10/18/2007	22:08:00	BDI-12	EBI	TF	OCO	41	39,032
E991690389	10/18/2007	22:16:00	GBK-15	EAD	TO	OCO	1	366
E493084941	10/18/2007	22:20:00	QUI-25	ECF	EF	UTC	30	24,330
E719776702	10/18/2007	22:26:00	ELD-25	ECC	TF	OCO	47	3,243
E746670639	10/18/2007	22:29:00	LEA-16	EBI	TF	OCO	82	54,202
E281690966	10/18/2007	22:33:00	ELD-25	ECC	TF	OCO	20	1,140
E190688558	10/18/2007	22:48:00	VAS-22	EBL	TO	OCO	5	3,510
E636902948	10/18/2007	23:04:00	SIL-13	ECE	TO	OCO	62	48,918
E042276960	10/18/2007	23:05:00	WIN-12	ECE	TO	OCO	32	60,960
E788965538	10/18/2007	23:10:00	SAH-15	EBD	TF	UTC	5	390
E304898264	10/18/2007	23:13:00	FRA-12	ECD	TO	OCO	10	970
E939907581	10/18/2007	23:27:00	NLM-16	EAC	TO	OTF	1	141
E337315400	10/18/2007	23:32:00	PTR-14	EAA	EF	OTF	3	1,722
E867713203	10/18/2007	23:33:00	FRU-25	ECA		OTR	2	642
E462258209	10/18/2007	23:43:00	ELD-27	ECC	TF	OCO	8	1,032
E330348866	10/18/2007	23:48:00	RJN-11	EBJ	TF	OSV	4	2,208
E179469198	10/18/2007	23:50:00	VAS-12	EBL	TO	OCO	57	44,256
E768816115	10/18/2007	23:53:00	ELD-25	ECC	TF		3	753
E230341394	10/18/2007	23:54:00	LON-22	ECC	TF		3	1,581
E526725448	10/18/2007	23:59:00	EPO-13	ECD	TO	OFU	3	6,750

Terms, Codes and Definitions Used on Detail Reports

Notification	[Notification Number] A number assigned by SAP, identifying the outage record
Date	The date of the outage
Time	The time of the outage
Circuit	[Reference Circuit] The circuit identifier for the affected circuit
F/LOC	[Functional Location] The grid number where the outage occurred. If the grid number is not available, the Reference Circuit identifier occupies this field
EQT NBR	[Equipment Number] A number used to tie the equipment involved in the outage to the related information in SAP. This number does not represent the physical number of the equipment

Area	[Maintenance Planner Group] A code representing the energy, region and service center	
	EAA – Bellingham	EBJ – South King
	EAB – Lynden	EBK – Southwest King
	EAC – Skagit	EBL – Vashon
	EAD – Whidbey	ECA – Puyallup
	EBD – Redmond	ECC – Olympia
	EBE – Factoria	ECD – Port Orchard
	EBF – Snoqualmie	ECE – Poulsbo
	EBI – Enumclaw	ECF – Port Townsend

Cause	Cause of Outage	
	AO – Accident Other	EF – Equipment Failure
	BA – Bird or Animal	EO – Electrical Overload
	CP – Car Pole	FI – Faulty Installation
	CR – Customer Request	TF – Tree Off Right-of-Way
	DU – Dig-up Underground	TO – Tree On Right-of-Way
	SO – Scheduled Outage	UN – Unknown

Equipment	Affected by, or involved in the outage	
	OCN – Connector	OSW – Overhead Switch
	OCO – Overhead Conductor	OTF – Overhead Transformer Fuse
	OCR – Crossarm	OTR – Overhead Transformer
	OFC – Overhead Cut-out	OUP – OH to UG Primary
	OFS – Overhead Fire Signal	OUS – OH to UG Secondary Service
	OFU – Fuse Link/OH Line Fuse	SBF – High-side Bank Fuse
	OGS – Span Guy	SCB – Power Circuit Breaker
	OHR – Overhead Recloser	UOT – Underground Outdoor Term
	OIN – Insulator	UPC – Underground Primary Cable
	OJU- Jump Wire	UPT – Padmount Transformer
	OPI – Overhead Pin Insulator	USV – Underground Service
	OPO – Pole	UTC – Underground Terminal Fuse
	OSV – Overhead Service	UTR – Submersible Transformer
	ORE – Regulator	

Codes, Definitions – Continued

CUST OUT	[Customer Out] The number of customers without power for any given outage record
CUST MIN	[Customer Minutes] The total number of minutes customers were without power for any given record
CODE	[Storm Code] An event descriptor
	NON – Non Storm / Normal Conditions
	WTH – Weather Related (eg: wind storm, showers, etc)
	MAJ – Major event

Newsprint Media Coverage



Friday, October 19, 9:37 AM EDT

One dead, 310,000 without electricity in Western Washington storm

SEATTLE (AP) -- More than 310,000 homes and businesses lost electricity, a kite boarder died on Lake Washington and the Hood Canal floating bridge was closed temporarily in the first major storm of the season in Western Washington.

Utility crews scrambled overnight to restore power after winds gusted to 66 mph at the height of the storm Thursday. A woman was injured when the top of a tree hit her in the head, a fire official said.

A Seattle police patrol boat, responding to an emergency call of a kite boarder being dragged north on Lake Washington, found a 44-year-old man floating face down off Kirkland on the east side of the lake, Officer Jeffrey R. Kappel said. The man was rushed to Harborview Medical Center but could not be revived.

At the height of the storm, utility spokesmen said, more than 220,000 customers lost power. Extra repair crews had been mustered in anticipation of the storm and restored electricity to all but about 35,000 or fewer by daybreak.

Puget Sound Energy spokeswoman Dorothy Bracken said 162,000 customers lost power during the storm. Among public utilities, the Snohomish County Public Utility District reported 85,000 customers in the dark, Seattle City Light had 40,000, Tacoma City Light had 23,000 and the Grays Harbor County PUD had 3,500.

Well before daybreak Friday the number of homes and businesses without electricity was down to 21,000 for PSE, mostly in Kitsap County; 8,000 in the Snohomish PUD, 1,340 in Seattle, 250 in Tacoma and hardly any in Grays Harbor.

Strong winds resulted in a three-hour precautionary closure of State Route 104 across Hood Canal, which separates the Kitsap and Olympia peninsulas. High winds can cause the concrete pontoons to move and high waves splash passing cars. The current floating bridge is a replacement for one that sank during a storm in 1979.

The highest gusts reported Thursday in the storm were 66 mph at Alki Point, the westernmost tip of Seattle, and 62 mph in Spanaway, a suburb south of Tacoma.

A woman was injured by the top of a cottonwood tree that broke off in high winds about 2 p.m. as she stood near her car in a shopping center in Kent, south of Seattle, said Fire Capt. Kyle Ohashi. The woman was hospitalized for treatment of head injuries.

In Seattle, Erin Condit narrowly escaped injury when a tree landed on her Toyota Tercel as she was parking. She said she dived under the dashboard as the tree hit and the fallen limbs were cut away from the car by a tree trimmer who had been working nearby.

Also in Seattle, the top half was blown off a 55-foot glass and metal sculpture called Vessel that was under construction at the Fred Hutchinson Cancer Research Center.

Qualifying Storm Event
October 18, 2007

In the Maple Valley area, south-southeast of Seattle, a power line fell on a Cedar River Middle School bus loaded with about 40 children, according to a Tahoma School District spokesman.

The bus driver reported seeing a flash while driving along State Highway 169 and pulled over, spokesman Kevin Patterson said. The children, uninjured, were able to walk off the bus and many called their parents on cellular telephones.

Kitsap Sun

Friday, October 19, 2007

UPDATE: Things were tense for a short time at about 5 p.m. today when a live electrical wire fell on a North Kitsap school bus on Little Boston Road, reported Lisa Kirkemo, who was working in the Kitsap County Emergency Operations Center.

The passengers and driver were advised to sit tight until crews from Puget Sound Energy deactivated the line.

Officials from North Kitsap Fire and Rescue then evacuated the bus. No injuries were reported.

In Silverdale, a tree fell into a house in the 10000 block of Merigold Drive shortly before 5 p.m., Kirkemo said. The tree was reported to be leaning into the house without causing any apparent damage.

UPDATE: The Department of Emergency Management asks that people do not call 911 to report power outages. Instead, call Puget Sound Energy at 1-888-225-5773.

UPDATE: Sedgwick Road to Southworth is closed because of a downed tree, according to Washington State Ferries, and they advise riders and drivers to expect delays. Service is still running about 30 minutes behind schedule.

UPDATE: School buses in South Kitsap School District were experiencing delays as of 4:30 p.m. as a result of trees down on Old Clifton Road and the Old Belfair Highway, said Tom Alverts with the district's transportation department.

"As of right now everybody's making it home. It's slow going mostly," he said.

The Southworth-Fauntleroy ferry is running 30 minutes behind because of an earlier power outage and the weather.

UPDATE: Places reporting power outages so far: East Bremerton, Seabeck, McCormick Woods and other parts of Port Orchard.

UPDATE: State Route 104 across the Hood Canal Bridge was closed as of about 4:30 p.m., according to preliminary reports.

UPDATE: Because of the windy weather wreaking havoc across Kitsap County, Bremerton schools announced at about 4:30 p.m. that school buses may be delayed.

UPDATE: Power outages are being reported on Bainbridge Island and traffic backups are being reported on north-bound 305 on the island.

UPDATE: Passenger-only ferry service has been canceled until further notice on the Vashon Island-Seattle route.

The first windstorm of the season began knocking on Kitsap County's door Thursday afternoon. There were reports of power outages, dangling wires, branches on fire and trees in roadways causing traffic hazards and blocking ferry traffic in South Kitsap.

Although Kitsap, Jefferson and Mason counties are not included in the National Weather Service's warning list of counties expected to be hit the hardest, Kitsap should brace itself for winds expected to blow 25 to 35 mph with gusts up to 55 mph, said meteorologist Johnny Burg.

"This is not going to be like last year's big storm," Burg said. "This is kind of the usual storm we get every fall and winter."

The winds are expected to die down by about 11 p.m., he said.

Puget Sound Energy, which serves eight Western Washington counties including Kitsap and Jefferson, reported that the strong winds began striking Thurston County at about noon today and moved north, said utility spokeswoman Dorothy Bracken. Numbers of customers left without power were not available as of 2:30 p.m., but Bracken said scattered outages had been reported.

Qualifying Storm Event
October 18, 2007

Homes in McCormick Woods in South Kitsap had reportedly lost power by 4 p.m. "Crews are responding as we are being notified of them," she said. Puget Sound energy has 80 work crews, including 50 tree crews, serving the utility's nine counties. "We've made sure the various crews have been put on alert," Bracken said. The storm is expected to hit coastal communities, central Puget Sound counties and western Whatcom and Skagit counties the hardest. Kitsap, Jefferson and Mason counties are not on the warning list. "Not as of yet," Burg said. Reports of downed wires, wires starting fires in trees, downed trees and an exposed transformers began pouring into CenCom 911 dispatchers after 2 p.m. from across Kitsap County. An outage at the Fauntleroy ferry terminal in West Seattle was reported, but power was restored, the Washington State Ferries reported at about 3 p.m. Downed trees were also reported to be blocking Sedgwick Road. Southworth ferry traffic may be delayed, the ferry alert system reported. Ferries on this route may be running about 20 minutes late because of the West Seattle power outage.



Friday, October 19, 2007

1 killed, 1 hurt in windstorm

By Erik Lacitis

Seattle Times staff reporter

A 44-year-old kite surfer died Thursday afternoon on Lake Washington amid a brief but powerful windstorm that also knocked a tree onto a woman in Kent as it swept through the Puget Sound region.

The Seattle man, whose name was not released, was the only reported death as steady winds hit 40 mph, with gusts in the mid-50s. Tens of thousands of people also lost power for a time in the storm, which toppled trees and blew debris onto roadways, cars and houses.

The man was reported facedown in the lake at 5:27 p.m., about a half-mile west of the Kirkland Marina Park, said Jeff Kappel, a Seattle police spokesman.

"He was apparently unresponsive," Kappel said. "There were friends out there along with him, and they're the ones that called it in."

A spokeswoman for Harborview Medical Center in Seattle confirmed the death but would not release any details.

Jon LaFollett, 44, of Kirkland, was another kite surfer who had been in the lake. He did not see the accident and did not know the victim.

He said the wind Thursday was "a good southerly storm," which made for "not an easy kiting day," but he was able to make jumps off the water that reached 50 feet.

In Kent, a woman was seriously injured when a 60-foot-tall cottonwood tree snapped in half just after 2 p.m., falling on her as she stood beside her car in a parking lot at Kent Station, a shopping complex near the Regional Justice Center.

"There were trees everywhere," said Teresa Martin, the manager of a nearby Bath & Body Works store. "We tried to keep her awake, but she wasn't talking."

The woman was also taken to Harborview, said Cpt. Kyle Ohashi of the Kent Fire Department. He was unable to say how badly she was hurt or which part of her body was struck by the falling tree.

"Everything from the upper half of the tree" broke off, pinning the woman to the ground, Ohashi said. The tree, about a foot in diameter, was the largest in a stand of 50 cottonwoods in an undeveloped portion of the parking lot, he said.

Kent Station will likely remove some of the tallest cottonwoods, said General Manager John Hinds.

Amid those tragedies, the storm affected thousands of Puget Sound residents whose power went out, but many had regained electricity as of Thursday night.

Dorothy Bracken, a spokeswoman for Puget Sound Energy, said fresh in many customers' collective memories was the Hanukkah Eve Wind Storm of 2006 that hit Puget Sound on Dec. 14 and 15 last year. The storm left about 1.5 million people without electricity, some for days.

"This does not match anything like that," she said. "Customers seem to be very understanding."

Downed trees and limbs also caused headaches for Seattle City Light crews. The utility reported several outages across Seattle on Thursday afternoon, affecting as many as 39,500 customers.

Outages were reported on Capitol Hill, in southwest and northwest Seattle and in an area bordered by Interstate 90 on the south and Lake Washington on the east.

The National Weather Service recorded 50-mph winds at 3 p.m. at Seattle-Tacoma International Airport. Several hours later, they had died down to about 15 mph. Today, it'll be back to the usual fall weather, said Dustin Guy, a meteorologist at the Weather Service. "Showers," he said. "Winds 15 to 25."

Damage from Thursday's storm was scattered throughout Puget Sound. Ferry runs were halted, and commuters had to deal with streets littered with downed trees and branches. Traffic on major highways slowed to a crawl at times, but no major incidents were reported.

Puget Power reported more than 200 outages affecting what it could only estimate as "thousands of customers," Bracken said. She said the outages began in the south and moved north to Island, Skagit and Whatcom counties.

Seattle City Light said that at the peak of the outages, between 4 p.m. and 5 p.m., 39,500 customers were without power. By 8 p.m., 18,693 customers in various pockets of the city were without power, said Suzanne Hartman, communications director,

Outages were in pockets, she said, "Because of the way the wind hit in gusts in various areas."

The Snohomish County Public Utility District reported 85,000 customers without power at 5:30 p.m. By 8 p.m., that number was down to 21,000.

In Maple Valley, snapped tree branches and mounds of fall leaves covered country roads when a Tahoma School District bus driver reported seeing a flash about 3:30 p.m. as a live power line fell onto the bus full of sixth- and seventh-graders, said district spokesman Kevin Patterson.

The bus driver pulled over on Highway 169 in Maple Valley, Patterson said. Sixth-grader Blake Lerdahl used his cellphone to call his parents at 3:15 p.m. and was picked up within half a half-hour.

"I was really scared when I saw sparking outside," the 11-year-old said.

Qualifying Storm Event
October 18, 2007

The bus wasn't electrified, and there were no injuries among the 41 students, who were able to safely walk off the bus. The bus was slightly damaged with a broken headlight and scratches where the power line struck it.

Police officers and firefighters waited with the students until they were picked up. Many parents were delayed due to a power outage that stopped dozens of downtown traffic signals.

About nine remaining students were taken back to the district's main office to wait to be picked up there, Patterson said.

Seven of the district's eight schools lost power soon after students were dismissed for the day.

In Wallingford, a woman narrowly escaped injury when a tree fell on her car. Erin Condit was parking her Toyota Tercel near Eastern Avenue North and Northeast 45th Street when she heard a crack, looked up and saw a tree falling her direction.

"I'm lucky to be alive, there's no doubt about it," she said.

Condit dove under her dashboard as the tree crushed the roof of her car — nearly trapping her inside.

She was uninjured but said the situation could have been a lot worse. "It was pretty traumatic."

Luckily, a worker was trimming trees nearby and he offered to cut the fallen limbs from her car.

Condit said neighbors told her the tree was scheduled for removal — it just didn't come soon enough.

High winds also knocked off the top of an aluminum-and-glass sculpture at Fred Hutchinson Cancer Research Center on Fairview Avenue East in Seattle.

Spokeswoman Christi Ball Loso said the 55-foot sculpture, called the Vessel, was under construction. There were no injuries.

Seattle Post-Intelligencer

Friday, October 19, 2007

Wind knocks out power for thousands

Kite boarder dies after gust hits Lake Washington

By KATHY MULADY, CASEY MCNERTHNEY AND LEVI PULKKINEN
P-I REPORTERS

The first big storm of the season blew into Seattle on Thursday with a punch that knocked out power to more than 280,000 residences and businesses throughout the Puget Sound region beginning midafternoon.

It also led to the death of a Lake Washington kite boarder, sent a Kent woman to the hospital after she was hit by a tree, broke a half-million dollar sculpture at the Fred Hutchinson Cancer Research Center, and forced cancellation of ferry runs.

All in a couple of hours.

At the height of the outages, as many as 50,000 Seattle City Light customers were without power.

"We have hundreds of lines down now," City Light spokesman Scott Thomsen said Thursday evening. "A lot of what we are encountering is trees that have fallen over, or branches that have broken off, falling down into the lines and causing damage to the system."

Power was out in many parts of City Light's service area late Thursday but all electricity had been restored by Friday morning.

Qualifying Storm Event
October 18, 2007

As the wind whipped, sometimes over 50 mph, emergency crews responded to a flood of calls. The highest reported gust was 62 mph in Spanaway, and the wind forced the closure of the Hood Canal Bridge for nearly three hours, starting at 4:30 p.m.

One of the most serious emergency calls came at 5:30 p.m. from a Lake Washington kite boarder who watched as another boarder was dragged north by the gusting wind.

A Seattle police patrol boat found the 44-year-old boarder floating face down about half a mile from the Kirkland marina, Officer Jeff Kappel said. When rescuers pulled the Seattle man from the water he was unresponsive and not breathing.

Police aboard the Harbor Patrol boat performed CPR on the man, as did medics who rushed him to Harborview Medical Center. Fire Department spokeswoman Helen Fitzpatrick said the man did not regain consciousness on the trip to the hospital.

Stowing his gear at Magnuson Park just before sundown, kite boarder Larry Breuer said the thoughts and prayers of the rest of the boarders were with the victim and his family.

Breuer, who's been in the sport nearly a year, was one of a number of boarders out on Lake Washington as the wind picked up Thursday afternoon. He said sustained wind speeds were not particularly severe, but that some gusts might have topped 40 mph.

"When you're out there, you're one with the environment," Breuer said.

The environment also took a toll in Kent, where Fire Department Capt. Kyle Ohashi said a woman standing near her car in the Kent Station shopping center parking lot just after 2 p.m. was hit by the top of a cottonwood tree that snapped off in the high wind. She was unable to talk and was taken to the hospital, he said.

Strong gusts also tore off the top half a 55-foot tall sculpture at the Fred Hutchinson center's main campus near South Lake Union, just after 2:30 p.m. The glass and steel sculpture called "Vessel" reportedly cost about \$500,000 and was paid for by a private donor. It was still under construction.

The artist, Ed Carpenter, lives in Portland and has been contacted, said Christi Losa, a spokeswoman for the research center. No one was injured.

With only a few exceptions, the state's ferry runs were unaffected. A captain on the 3 p.m. route from Seattle to Bainbridge Island came on the boat's public address system, asking people not to go on the deck, where wind gusts reached 60 mph. Puget Sound waters had white caps, and the wind blew water across the deck in a constant spray. Foot-ferry service was temporarily halted on the Fauntleroy-Vashon-Southworth run, mostly because of power outages at the dock.

Seattle Public Schools said any buildings without power Friday morning will be closed for the day.

Closures will be announced on TV, radio and the district's Web site, seattleschools.org.

The city of Seattle activated its emergency operations center in response to the first windstorm of the season to take reports of power outages.

The two biggest areas without power Thursday were near South Spokane Street in South Seattle and in North Seattle around Northeast 125th Street. About 4,500 customers were without power in those areas.

There were other reports of outages in West Seattle near Fauntleroy Way Southwest, most of Burien and near Northgate. About a dozen young trees toppled along Western Avenue downtown.

In the Maple Valley area, a live power line fell on a Cedar River Middle School bus loaded with about 40 children on state Route 169, a Tahoma School District spokesman said. The children were not injured. They were able to walk off the bus and many called their parents on cell phones to be picked up.

By 3:30 p.m., Puget Sound Energy had reports of scattered outages in Thurston, Pierce and east King counties, with a total of about 150,000 customers without power at one time or another during the storm.

By 9 p.m., 68,000 of those customers had power restored. Snohomish PUD reported 85,000 customers without power at the peak.

The National Weather Service said the wind should die down today, with the weather returning to typical fall showers.

"It is more or less what we expected all along," meteorologist Chris Burke said.