

Exh. AEB-9  
Docket UE-19 \_\_\_\_\_  
Witness: Ann E. Bulkley

**BEFORE THE WASHINGTON  
UTILITIES AND TRANSPORTATION COMMISSION**

WASHINGTON UTILITIES AND  
TRANSPORTATION COMMISSION,

Complainant,

v.

PACIFICORP dba  
PACIFIC POWER & LIGHT COMPANY

Respondent.

Docket UE-19 \_\_\_\_\_

**PACIFICORP  
EXHIBIT OF ANN E. BULKLEY**

**Risk Premium Approach**

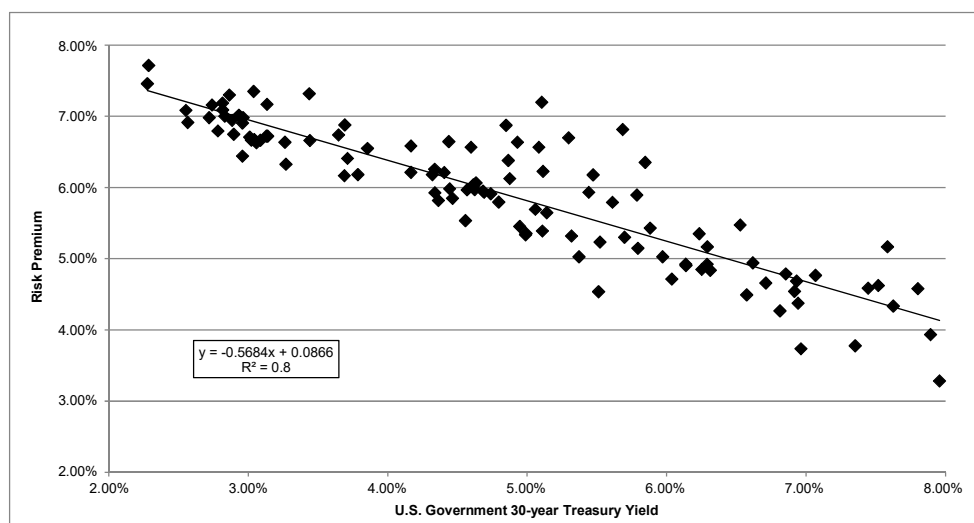
**December 2019**

BOND YIELD PLUS RISK PREMIUM

	[1]	[2]	[3]
	Average Authorized Electric ROE	U.S. Govt. 30-year Treasury	Risk Premium
1992.1	12.38%	7.80%	4.58%
1992.2	11.83%	7.89%	3.93%
1992.3	12.03%	7.45%	4.59%
1992.4	12.14%	7.52%	4.62%
1993.1	11.84%	7.07%	4.77%
1993.2	11.64%	6.86%	4.79%
1993.3	11.15%	6.31%	4.84%
1993.4	11.04%	6.14%	4.90%
1994.1	11.07%	6.57%	4.49%
1994.2	11.13%	7.35%	3.78%
1994.3	12.75%	7.58%	5.17%
1994.4	11.24%	7.96%	3.28%
1995.1	11.96%	7.63%	4.34%
1995.2	11.32%	6.94%	4.37%
1995.3	11.37%	6.71%	4.66%
1995.4	11.58%	6.23%	5.35%
1996.1	11.46%	6.29%	5.17%
1996.2	11.46%	6.92%	4.54%
1996.3	10.70%	6.96%	3.74%
1996.4	11.56%	6.62%	4.94%
1997.1	11.08%	6.81%	4.27%
1997.2	11.62%	6.93%	4.68%
1997.3	12.00%	6.53%	5.47%
1997.4	11.06%	6.14%	4.92%
1998.1	11.31%	5.88%	5.43%
1998.2	12.20%	5.85%	6.35%
1998.3	11.65%	5.47%	6.18%
1998.4	12.30%	5.10%	7.20%
1999.1	10.40%	5.37%	5.03%
1999.2	10.94%	5.79%	5.15%
1999.3	10.75%	6.04%	4.71%
1999.4	11.10%	6.25%	4.85%
2000.1	11.21%	6.29%	4.92%
2000.2	11.00%	5.97%	5.03%
2000.3	11.68%	5.79%	5.89%
2000.4	12.50%	5.69%	6.81%
2001.1	11.38%	5.44%	5.93%
2001.2	11.00%	5.70%	5.30%
2001.3	10.76%	5.52%	5.23%
2001.4	11.99%	5.30%	6.70%
2002.1	10.05%	5.51%	4.54%
2002.2	11.41%	5.61%	5.79%
2002.3	11.65%	5.08%	6.57%
2002.4	11.57%	4.93%	6.64%
2003.1	11.72%	4.85%	6.87%
2003.2	11.16%	4.60%	6.56%
2003.3	10.50%	5.11%	5.39%
2003.4	11.34%	5.11%	6.23%
2004.1	11.00%	4.88%	6.12%
2004.2	10.64%	5.32%	5.32%
2004.3	10.75%	5.06%	5.69%
2004.4	11.24%	4.86%	6.38%
2005.1	10.63%	4.69%	5.93%
2005.2	10.31%	4.47%	5.85%
2005.3	11.08%	4.44%	6.65%
2005.4	10.63%	4.68%	5.95%
2006.1	10.70%	4.63%	6.06%
2006.2	10.79%	5.14%	5.65%
2006.3	10.35%	4.99%	5.35%
2006.4	10.65%	4.74%	5.91%
2007.1	10.59%	4.80%	5.80%
2007.2	10.33%	4.99%	5.34%
2007.3	10.40%	4.95%	5.45%
2007.4	10.65%	4.61%	6.04%
2008.1	10.62%	4.41%	6.21%
2008.2	10.54%	4.57%	5.97%
2008.3	10.43%	4.44%	5.98%
2008.4	10.39%	3.65%	6.74%
2009.1	10.75%	3.44%	7.31%
2009.2	10.75%	4.17%	6.58%
2009.3	10.50%	4.32%	6.18%
2009.4	10.59%	4.34%	6.26%
2010.1	10.59%	4.62%	5.97%
2010.2	10.18%	4.36%	5.82%

BOND YIELD PLUS RISK PREMIUM

	[1]	[2]	[3]
	Average Authorized Electric ROE	U.S. Govt. 30-year Treasury	Risk Premium
2010.3	10.40%	3.86%	6.55%
2010.4	10.38%	4.17%	6.21%
2011.1	10.09%	4.56%	5.53%
2011.2	10.26%	4.34%	5.92%
2011.3	10.57%	3.69%	6.88%
2011.4	10.39%	3.04%	7.35%
2012.1	10.30%	3.14%	7.17%
2012.2	9.95%	2.93%	7.02%
2012.3	9.90%	2.74%	7.16%
2012.4	10.16%	2.86%	7.30%
2013.1	9.85%	3.13%	6.72%
2013.2	9.86%	3.14%	6.72%
2013.3	10.12%	3.71%	6.41%
2013.4	9.97%	3.79%	6.18%
2014.1	9.86%	3.69%	6.17%
2014.2	10.10%	3.44%	6.66%
2014.3	9.90%	3.26%	6.64%
2014.4	9.94%	2.96%	6.98%
2015.1	9.64%	2.55%	7.08%
2015.2	9.83%	2.88%	6.94%
2015.3	9.40%	2.96%	6.44%
2015.4	9.86%	2.96%	6.90%
2016.1	9.70%	2.72%	6.98%
2016.2	9.48%	2.57%	6.91%
2016.3	9.74%	2.28%	7.46%
2016.4	9.83%	2.83%	7.00%
2017.1	9.72%	3.04%	6.67%
2017.2	9.64%	2.90%	6.75%
2017.3	10.00%	2.82%	7.18%
2017.4	9.91%	2.82%	7.09%
2018.1	9.69%	3.02%	6.66%
2018.2	9.75%	3.09%	6.66%
2018.3	9.69%	3.06%	6.63%
2018.4	9.60%	3.27%	6.33%
2019.1	9.72%	3.01%	6.71%
2019.2	9.58%	2.78%	6.79%
2019.3	10.00%	2.29%	7.71%
AVERAGE	10.74%	4.82%	5.91%
MEDIAN	10.64%	4.80%	6.04%



SUMMARY OUTPUT

Regression Statistics	
Multiple R	0.89442
R Square	0.80000
Adjusted R Square	0.79816
Standard Error	0.00433
Observations	111

ANOVA

	df	SS	MS	F	Significance F
Regression	1	0.008193	0.008193	435.987672	0.000000
Residual	109	0.002048	0.000019		
Total	110	0.010241			

	Coefficients	Standard Error	t Stat	P-value	Lower 95%	Upper 95%	Lower 95.0%	Upper 95.0%
Intercept	0.0866	0.00138	62.91	0.000000	0.083824	0.089278	0.083824	0.089278
U.S. Govt. 30-year Treasury	(0.5684)	0.02722	(20.88)	0.000000	(0.622328)	(0.514427)	(0.622328)	(0.514427)

	[7]	[8]	[9]
	U.S. Govt. 30-year Treasury	Risk Premium	ROE
Current 30-Day Average [4]	2.11%	7.45%	9.57%
Blue Chip Consensus Forecast (Q1 2020 - Q1 2021) [5]	2.32%	7.34%	9.66%
Blue Chip Consensus Forecast (2021-2025) [6]	3.60%	6.61%	10.21%
AVERAGE			9.81%

Notes:

- [1] Source: Regulatory Research Associates, includes cases through September 30, 2019
- [2] Source: Bloomberg Professional, quarterly bond yields are the average of each trading day in the quarter
- [3] Equals Column [1] - Column [2]
- [4] Source: Bloomberg Professional, 30-day average as of September 30, 2019
- [5] Source: Blue Chip Financial Forecasts, Vol. 38, No. 10, October 1, 2019, at 2
- [6] Source: Blue Chip Financial Forecasts, Vol. 38, No. 6, June 1, 2019, at 14
- [7] See notes [4], [5] & [6]
- [8] Equals  $0.086551 + (-0.568377 \times \text{Column [7]})$
- [9] Equals Column [7] + Column [8]