

**Exhibit No. ___ (KH-26)
Docket TR-100098
Witness: Kathy Hunter**

BEFORE THE WASHINGTON UTILITIES AND TRANSPORTATION COMMISSION

CITY OF FIFE,

Petitioner,

v.

UNION PACIFIC RAILROAD,

Respondent.

DOCKET TR-100098

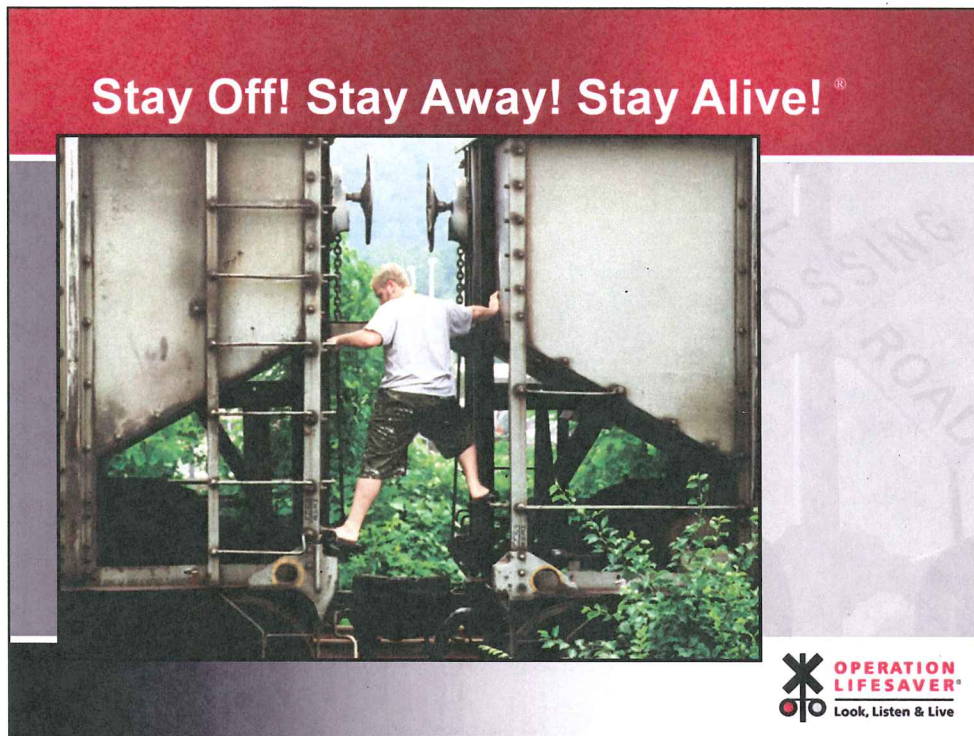
EXHIBIT TO REBUTTAL TESTIMONY OF

Kathy Hunter

**STAFF OF
WASHINGTON UTILITIES AND
TRANSPORTATION COMMISSION**

Operation Lifesaver Public Education Slides – Visual 33 and Visual 34

January 19, 2011



Visual 33 – Crossing Through Stopped Train/Playing on Rail Cars

- Crossing through standing rail cars or playing on them has caused many severe injuries and deaths. Besides being dangerous it is trespassing and illegal.
- When the train starts to move, the rail cars often jerk with enough force to cause you to lose your grip or balance, resulting in falling off the cars and being run over by the train.
- The drawbars and couplers that connect the cars can slide rapidly causing hands and feet to be crushed.

Stay Off! Stay Away! Stay Alive!®



Visual 34 – Crawling Under Rail Cars

- Crawling under a stopped train to save time or take a shortcut has cost many people their lives. It has also resulted in many others losing arms or legs.
- A train can move with a sudden jolt in either direction without warning.
- The train crew cannot see a person crawling under their train from the locomotive.