



2007
Qualifying Storm Events

January 5, 2007

Table of Contents

Table of Contents	2
Event Description	3
Date of event	3
Event Type.....	3
Service Areas Affected	3
Number of Customers Affected.....	3
Summary of System Impacts	3
Mobilization Summary	3
Major Event Day – Qualification.....	5
Qualified Events - 2007	5
Current Event – Calculation Detail	5
Cumulative list of events that have qualified	5
Event Restoration – Cost Summary	6
Restoration Cost Detail by Qualifying Event.....	6
YTD Storm Restoration Cost Detail – Through January 5, 2007	6
Detail Documents	7
Restoration Cost Detail – Current Event	8
IEEE-1366 - Detailed List of Distribution Circuits with Outages.....	9
Terms, Codes and Definitions Used on Detail Reports.....	16
Newsprint Media Coverage	18

Event Description

Date of event

January 5, 2007

Event Type

Wind storm.

Service Areas Affected

Winds picked-up quickly at midnight January 5th, resulting in a quick surge of outages across much of PSE's electric service area. Wind gusts were strong enough to bring down entire trees, resulting in a significant number of transmission line outages in Island, Pierce and north King Counties.

Number of Customers Affected

Approximately 43,320 customers lost electric service over the course of this event.

Summary of System Impacts

Total Number of Outages	363
Distribution Circuits Totally Out	21
Distribution Circuits Partially Out	342

Transmission Circuits Affected	16
Substations Totally Off-line	10

Mobilization Summary

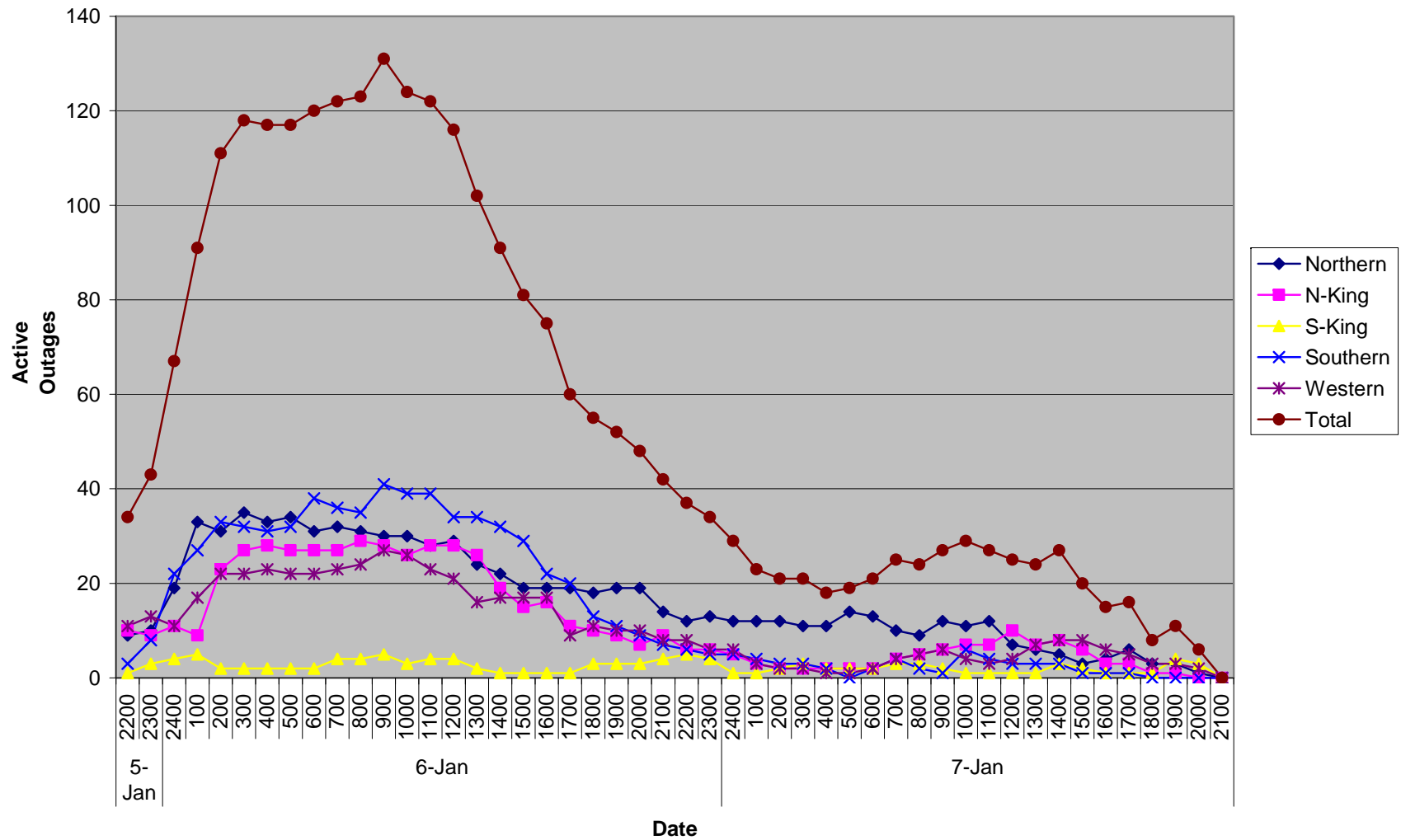
Operating bases

Base	Date Opened	Time Opened	Date Closed	Time Closed
Skagit	1/5/2007	23:15	1/7/2007	15:30
Thurston	1/5/2007	23:30	1/6/2007	22:00
Kitsap	1/6/2007	00:30	1/6/2007	21:30
N King	1/6/2007	01:15	1/6/2007	19:45

Emergency Operations Center

EOC	Date Opened	Time Opened	Date Closed	Time Closed
	1/6/2007	00:30	1/6/2007	22:00

Outage Events - January 5, 2007



Major Event Day – Qualification

IEEE 1366 Method

IEEE 1366 was established to present a set of terms and definitions which can be used to foster uniformity in the development of distribution service reliability indices, to identify factors which affect the indices, and to aid in consistent reporting practices among utilities. Also, it provides guidance for new personnel in the reliability area, and tools for internal as well as external comparisons. The Major Event Day definition was created as part of IEEE 1366 to allow for consistent calculation of reliability metrics between utilities, and enable more valid comparisons with other utility reliability metrics.

IEEE Major Event Day Calculation (2.5 BETA METHOD)

1. A threshold on daily SAIDI is computed once a year, following year end.
2. Assemble the 5 most recent years of historical values of SAIDI/day.
3. Discard any days in the data set that has a SAIDI/day of zero.
4. Find the natural logarithm of each value in the data set.
5. Compute the average Alpha and the standard deviation (Beta) of the natural logarithms computed in step 3.
6. Compute the threshold Tmed where $Tmed = \exp(\text{Alpha} + 2.5 * \text{Beta})$
7. Any day in the next year with SAIDI > Tmed is a major event day.

Puget Sound Energy's Major Event Threshold for 2007: 6.87 Minutes

Qualified Events - 2007

Current Event – Calculation Detail

Event Date	Total Customer Minutes	Average Customer Count	Daily SAIDI – Customer Minutes /Customer Count
1/5/2007	12,147,245	1,045,485	11.62

Cumulative list of events that have qualified

Date(s)	T-med Score	O&M – Deferrable Accumulation
1/2/2007	8.41	\$1,338,765
1/5/2007	11.62	\$2,395,508

Event Restoration – Cost Summary

Restoration Cost Detail by Qualifying Event

Date	Qualified Events Deferred Account	Capital	C&D Costs Recoverable from Direct Billings (Costs Not Yet Billed)	O&M – Not Deferrable	O&M – Deferrable Accumulation	Total O&M	Total
1/2/2007 (*)	\$0	\$56,550	\$0	\$38,044	\$1,338,765	\$1,376,809	\$1,433,359
1/5/2007	\$0	\$111,336	\$0	\$67,273	\$2,328,235	\$2,395,508	\$2,506,844

(*) **Updated** – Corrected cost detail from January 2, 2007 Qualifying Event Report.

YTD Storm Restoration Cost Detail – Through January 5, 2007

Qualified Events Deferred Account	Capital	C&D Costs Recoverable from Direct Billings (Costs Not Yet Billed)	O&M – Not Deferrable	O&M Deferrable Accumulation	Total O&M	Total
\$0	\$167,886	\$0	\$105,317	\$3,667,000	\$3,772,317	\$3,940,203

Qualifying Storm Event
January 5, 2007

Detail Documents

Restoration Cost Detail – Current Event

Detailed List of Distribution Circuits with Outages

Terms, Codes & Definitions Used on Detail Reports

Newsprint Media Coverage

Restoration Cost Detail – Current Event

Puget Sound Energy							
January 5, 2007 Storm Damage Repair Costs							
	Qualifying Events Deferred Account	Capital	C&D Recoverable from Direct Billings (Costs Not Yet Billed)	O&M - Not Deferrable	O&M - Deferrable Accumulation	Total O&M	Total
Labor							
ST					\$ 11,042.74	\$ 11,042.74	\$ 11,042.74
OT					\$ 207,013.01	\$ 207,013.01	\$ 207,013.01
Total Labor	\$ -	\$ -	\$ -	\$ -	\$ 218,055.75	\$ 218,055.75	\$ 218,055.75
Labor OH					\$ 69,239.70	\$ 69,239.70	\$ 69,239.70
Materials		\$ 48,578.45			\$ 25,074.25	\$ 25,074.25	\$ 73,652.70
Contractors		\$ 55,211.06			\$ 1,924,059.83	\$ 1,924,059.83	\$ 1,979,270.89
Other Direct Charges					\$ 15,734.14	\$ 15,734.14	\$ 15,734.14
Fleet					\$ 43,010.58	\$ 43,010.58	\$ 43,010.58
Other Assessments		\$ 7,546.15		\$ 67,273.21	\$ 33,060.40	\$ 100,333.61	\$ 107,879.76
Deferred Expenses	\$ -				\$ -	\$ -	\$ -
	\$ - (*)	\$ 111,335.66	\$ -	\$ 67,273.21	\$ 2,328,234.65	\$ 2,395,507.86	\$ 2,506,843.52

(*) January 2, 2007 **Restoration Cost Detail – Current Event** incorrectly stated \$1,339,165 in deferred expenses.

IEEE-1366 - Detailed List of Distribution Circuits with Outages

Notification	Date	Time	Circuit	Area	Cause	Equipment	Cust Outs	Cust Mins
E351078355	1/5/2007	1:55:00	DEC-17	ECC	EF	OTF	6	363
E903786437	1/5/2007	5:53:00	QUI-26	ECF	TO	OCO	205	18,860
E355466077	1/5/2007	7:08:00	LGY-12	EAD	EF	UPC	5	10,020
E739637153	1/5/2007	7:34:00	CHA-15	ECC	TF	OCO	3	351
E010649265	1/5/2007	8:00:00	GAR-15	ECA	SO	UPT	1	390
E894743676	1/5/2007	8:11:00	IRO-13	ECF	TO	OFU	21	2,121
E838375107	1/5/2007	8:34:00	LAB-25	EAA	TF	OCO	7	1,379
E726276602	1/5/2007	8:37:00	PMA-16	ECE	TF	OSV	1	122
E608337099	1/5/2007	9:05:00	PAT-17	ECC	TF	OCO	42	4,634
E994019684	1/5/2007	9:08:00	NBE-13	EBF	EF	OCO	987	7,896
E559230410	1/5/2007	9:18:00	CHR-22	ECE	TO	OCO	3	807
E965536344	1/5/2007	9:58:00	LOL-25	ECD	TF	OPO	1	242
10711652	1/5/2007	10:00:00	MED-33	EBE	EF	USV	1	225
E599988902	1/5/2007	10:05:00	SUN-13	ECA	DU	USV	1	100
E385643699	1/5/2007	10:20:00	RPT-15	ECD	EF	OCO	1	88
E858869811	1/5/2007	10:40:00	RIV-15	EAC	EF	OCO	1	321
E484435052	1/5/2007	10:40:00	SLA-17	EAA	EF	OJU	3	354
E973344745	1/5/2007	10:50:00	LYO-12	EBJ	TF	OCE	4	584
10711584	1/5/2007	10:59:00	AIR-26	ECC	EF	OTF	1	41
E521510038	1/5/2007	10:59:00	LAT-17	EBJ	DU	USC	1	241
E720466840	1/5/2007	11:22:00	BRO-15	EAD	TF	OCO	79	61,920
E195567407	1/5/2007	11:50:00	VIS-26	EAA	TF	OTF	1	55
E545681444	1/5/2007	12:01:00	FRA-15	ECD	TO	OCO	50	10,750
E332514582	1/5/2007	12:08:00	YEL-27	ECC	EF	OTR	2	645
E505639591	1/5/2007	12:18:00	CRE-12	EAD	AO	OSV	1	147
E776847051	1/5/2007	12:28:00	LGY-16	EAD	TF	OCO	115	51,980
E841695839	1/5/2007	12:29:00	AIR-26	ECC	EF	OJU	8	368
E985870488	1/5/2007	12:33:00	FRA-16	ECD	TO	OCO	1,896	117,552
E281538116	1/5/2007	12:34:00	IRO-17	ECF	TO	OFU	7	483
E537046445	1/5/2007	12:37:00	PLG-16	ECC	AO	OSV	1	29
E785078291	1/5/2007	12:46:00	WOB-25	EAA	TF	OCO	10,999	1,403
E910433705	1/5/2007	12:58:00	BRO-16	EAD	TF	OCO	1,018	223,960
E916103545	1/5/2007	13:02:00	LON-22	ECC	EF	USV	1	328
E903233350	1/5/2007	13:33:00	LAB-25	EAA	PO	OCN	1	112
E427730573	1/5/2007	13:35:00	PEA-15	EBJ	CP	OCO	35	2,660
E159669770	1/5/2007	13:44:00	BTN-35	EAC	EF	OTF	1	66
E688346752	1/5/2007	13:57:00	HAP-16	EAA	TF	OCO	20	8,860
E454064954	1/5/2007	14:03:00	PTL-16	ECF	DU	USV	1	149
E512536841	1/5/2007	14:09:00	SCH-15	EAA	TF	OTF	3	243
E531501289	1/5/2007	14:20:00	MTV-15	EAC	EF	OSV	1	730
E086995894	1/5/2007	14:28:00	PIK-23	EBF	PO	USV	1	418
E693285519	1/5/2007	14:31:00	LUH-15	ECC	TF	OCO	7	532
E644840466	1/5/2007	14:40:00	FNW-15	ECD	TO	OCO	33	7,260
E785207373	1/5/2007	14:54:00	RJN-13	EBJ	EF	OTF	4	188
E328868518	1/5/2007	15:04:00	PTL-13	ECF	DU	UPC	16	3,172
E528931884	1/5/2007	15:05:00	WIS-12	EBF	TF	OCO	1	171

Qualifying Storm Event
January 5, 2007

Notification	Date	Time	Circuit	Area	Cause	Equipment	Cust Outs	Cust Mins
E980829320	1/5/2007	15:25:00	GRV-16	ECA	EF	OFU	2	288
E402121046	1/5/2007	15:40:00	NLM-13	EAC	EF	OTF	4	320
E695069947	1/5/2007	15:44:00	NNO-15	EBJ	TF	OCO	2,242	139,982
E148845455	1/5/2007	15:50:00	SKI-13	EBD	TF	OCO	58	19,256
E445325557	1/5/2007	15:52:00	SBE-25	EBE	EF	OTF	4	600
E699268394	1/5/2007	16:46:00	CHA-13	ECC	AO	OSV	1	134
E102522219	1/5/2007	17:00:00	ZEN-23	EBK	EF	USV	1	172
E500156511	1/5/2007	17:04:00	SCH-15	EAA	EF	OJU	5	2,145
10712011	1/5/2007	17:11:00	LON-22	ECC	TF	OCO	25	3,175
E579939571	1/5/2007	17:13:00	HAM-13	EAC	TF	OTF	2	222
E547988356	1/5/2007	17:15:00	RAI-11	ECC	EF	OJU	12	1,412
E552945392	1/5/2007	17:18:00	MAP-13	EBF	EF	OTF	1	75
E193989378	1/5/2007	17:28:00	SLA-16	EAA	EF	OTF	2	172
E728866674	1/5/2007	17:36:00	KEN-12	EAA	EF	OCO	12	6,789
E085195815	1/5/2007	17:43:00	FLD-13	EAD	TF	CDH	1,574	1,915,558
E508860933	1/5/2007	18:01:00	BLU-16	ECC	TO	OCO	104	36,608
E713705701	1/5/2007	18:11:00	SNQ-13	EBK	TO	OCO	39	15,184
E728089467	1/5/2007	18:36:00	MWD-15	EBE	EF	USV	1	354
E674358671	1/5/2007	18:40:00	FRA-16	ECD	TO	CDH	2	689
E269960634	1/5/2007	18:41:00	ANA-16	EAC	EF	UPS	758	231,352
E828126873	1/5/2007	18:57:00	WIS-13	EBF	EF	PMF	50	10,250
E134441412	1/5/2007	19:26:00	CHI-12	ECD	TO	OFU	2,143	554,823
E024210609	1/5/2007	19:31:00	BRS-24	EAC	TO	OCO	433	338,567
E155906302	1/5/2007	19:36:00	UHL-23	EBD	TO	OCO	1,194	185,070
E452897224	1/5/2007	20:07:00	FNW-16	ECD	TO	OCO	27	2,155
E522948139	1/5/2007	20:15:00	ROC-16	ECC	TF	OCO	1	1,938
E265625781	1/5/2007	20:20:00	PIN-27	EBF	TO	UTC	77	15,169
E364972966	1/5/2007	20:23:00	SIL-13	ECE	TO	OCO	14	12,642
E858758847	1/5/2007	20:26:00	CLY-26	EBE	EF	OTF	3	375
E803238787	1/5/2007	20:31:00	VAS-12	EBL	TF	OCO	6	7,194
E983498248	1/5/2007	20:45:00	SKE-26	ECE	TO	UTC	1	1,323
E161680993	1/5/2007	20:45:00	RHO-15	ECA	TO	OCO	25	2,765
E633475365	1/5/2007	20:47:00	CHI-13	ECD	TO	OCO	26	19,838
E123101911	1/5/2007	20:49:00	CLA-13	EBI	TO	OCO	7	17,398
E260502813	1/5/2007	20:56:00	NBE-16	EBF	TO	OCO	709	126,899
E986121637	1/5/2007	21:04:00	SCH-13	EAA	TF	OCO	1,275	45,900
E353533201	1/5/2007	21:09:00	LOL-23	ECD	TF	OCO	17	6,001
E190296626	1/5/2007	21:23:00	UHL-21	EBD	PO	USV	1	947
E859977165	1/5/2007	21:23:00	MVW-13	EBK	TO	OCO	6,298	75,576
E866672209	1/5/2007	21:48:00	WIN-12	ECE	TO	OFU	4	508
E795213222	1/5/2007	21:49:00	SUM-15	EAC	TO	CDH	1,750	352,500
E275066913	1/5/2007	21:59:00	OVE-12	EBE	TF	OTF	6	1,252
E686755142	1/5/2007	22:00:00	MER-15	EBE	TF	OCO	6	882
E559885886	1/5/2007	22:07:00	KNT-26	EBJ	EF	OJU	2	444
E261579050	1/5/2007	22:16:00	HOB-15	EBI	TO	OCO	14	4,564
E160842210	1/5/2007	22:20:00	FRA-12	ECD	TO	OCO	24	26,232
E168611160	1/5/2007	22:29:00	VAS-23	EBL	TO	CDH	56	34,597
E715474243	1/5/2007	22:49:00	HEM-16	ECA	TF	OPO	1,072	248,520
E781666590	1/5/2007	22:51:00	VAS-12	EBL	TO	OCO	9	6,003

Qualifying Storm Event
January 5, 2007

Notification	Date	Time	Circuit	Area	Cause	Equipment	Cust Outs	Cust Mins
E801159782	1/5/2007	22:52:00	GRI-16	ECC	TF	OCO	25	29,850
E378466406	1/5/2007	22:52:00	GRI-15	ECC	TF	OJU	72	78,696
E340267062	1/5/2007	22:52:00	ING-13	EBD	TF	OCO	306	243,912
E309032778	1/5/2007	22:53:00	GRI-13	ECC	TF	OPO	150	149,550
E951570811	1/5/2007	22:56:00	IRO-17	ECF	TO	OCO	40	35,960
E622522522	1/5/2007	22:56:00	IRO-17	ECF	TO	OCO	1,125	358,750
E976840732	1/5/2007	22:57:00	FRG-26	ECC	TF	OCO	62	57,846
E724011340	1/5/2007	23:01:00	ELD-25	ECC	TF	OCO	60	43,140
E076629873	1/5/2007	23:01:00	ELD-23	ECC	TF	OPO	63	64,197
E468706895	1/5/2007	23:02:00	LUH-14	ECC	TF	OCO	1,857	1,045,491
E498893167	1/5/2007	23:03:00	PRI-21	ECC	TF	OCO	2,340	807,300
E894831728	1/5/2007	23:03:00	PLG-13	ECC	TF	OCO	1,754	370,094
E832238978	1/5/2007	23:04:00	ROC-25	ECC	TF	OTR	25	40,400
E058942596	1/5/2007	23:06:00	MOT-14	ECC	EF	OCO	43	41,022
E824717541	1/5/2007	23:11:00	NNO-15	EBJ	TO	OFU	6	631
E048367838	1/5/2007	23:17:00	ROC-17	ECC	TF	OCR	30	39,090
E916276932	1/5/2007	23:25:00	PET-13	EAC	TO	CDH	1,757	623,735
E512517823	1/5/2007	23:26:00	PTR-14	EAA	EF	OSV	1	637
E200473959	1/5/2007	23:31:00	PTR-16	EAA	EF	PMF	25	13,775
E294345247	1/5/2007	23:32:00	BIG-15	EAC	TO	OFU	12	1,908
E547466780	1/5/2007	23:34:00	BAR-13	ECC	EF	OCO	43	33,368
E287478435	1/5/2007	23:34:00	OBY-17	ECC	TF	OCO	1,317	547,872
E316889397	1/5/2007	23:35:00	IRO-13	ECF	TO	OCO	180	142,950
E208038752	1/5/2007	23:35:00	CAP-13	ECC	TF	OFU	14	10,780
E950864691	1/5/2007	23:37:00	NOB-24	EBE	TO	OCO	1	858
E030618568	1/5/2007	23:41:00	CRE-16	EAD	TO	OCO	42	51,408
E688018528	1/5/2007	23:42:00	GBK-15	EAD	TO	CDH	30	26,640
E699807932	1/5/2007	23:44:00	SNQ-17	EBF	TF	OCO	4	2,104
E953525493	1/5/2007	23:46:00	SWA-12	EAD	EO	OCO	448	291,633
E425468936	1/5/2007	23:46:00	RAI-13	ECC	TO	OPO	78	74,022
E014359614	1/5/2007	23:47:00	OBY-16	ECC	TF	OCO	14	10,290
E651918162	1/5/2007	23:48:00	GBK-13	EAD	TO	CDH	600	671,200
E297122157	1/5/2007	23:50:00	SNQ-13	EBF	TO	OCR	2,773	671,066
E201146189	1/5/2007	23:51:00	BLU-16	ECC	TF	OCO	117	125,073
E039014773	1/5/2007	23:54:00	PIN-27	EBF	TO	OCO	9	1,683
E292157553	1/5/2007	23:59:00	HAS-15	ECF	TO	OFU	1,299	422,175

Notification	Date	Time	Circuit	Area	Cause	Equipment	Cust Outs	Cust Mins
E722174140	1/6/2007	0:00:00	CPV-13	EAD	TO	UPC	582	293,325
E241982985	1/6/2007	0:00:00	PGA-13	ECE	TO	OCO	977	996,540
E912158627	1/6/2007	0:01:00	FAB-15	EAD	TO	OCO	1,494	177,786
10719025	1/6/2007	0:02:00	TLN-0078	EEA	TF	OCO	4,480	147,840
E360882245	1/6/2007	0:03:00	DIS-13	ECF	TO	OCO	10	11,770
E027723306	1/6/2007	0:04:00	KEA-15	ECF	TO	OFU	1,041	270,660
E279376024	1/6/2007	0:05:00	FLD-12	EAD	TO	CDH	223	273,175
E459590458	1/6/2007	0:09:00	CPV-12	EAD	TO	CDH	11	9,471
E063294374	1/6/2007	0:12:00	ELD-27	ECC	TF	OCO	72	74,376
E340801063	1/6/2007	0:13:00	HLC-23	EAD	TO	OCO	30	41,580

Qualifying Storm Event
January 5, 2007

Notification	Date	Time	Circuit	Area	Cause	Equipment	Cust Outs	Cust Mins
E586827330	1/6/2007	0:14:00	NLM-12	EAC	TO	OCO	11	2,563
E523884179	1/6/2007	0:15:00	SCH-15	EAA	TF	OCO	30	3,090
E062050015	1/6/2007	0:15:00	FAL-15	EBF	TO	OCR	345	176,640
E320526524	1/6/2007	0:15:00	CPV-15	EAD	TO	UOT	86	69,230
E481710484	1/6/2007	0:22:00	IRO-15	ECF	TF	OCO	1,705	604,060
E277163795	1/6/2007	0:26:00	HAS-12	ECF	TO	OCO	191	109,634
E834221897	1/6/2007	0:26:00	IRO-13	ECF	TO	OCO	35	33,075
E829716886	1/6/2007	0:29:00	FLD-15	EAD	TO	CDH	1,655	1,559,305
E559356352	1/6/2007	0:31:00	SWI-17	ECC	TF	OCO	554	337,386
E650296200	1/6/2007	0:31:00	BRO-16	EAD	TO	CDH	218	472,842
E581235870	1/6/2007	0:34:00	FRA-16	ECD	TO	OCO	17	1,666
E492410667	1/6/2007	0:34:00	BRO-15	EAD	TF	OCO	9,434	9,861,239
E989798940	1/6/2007	0:36:00	CHR-25	ECE	TO	OCO	485	275,480
E605879729	1/6/2007	0:38:00	MKI-17	ECC	TF	OCO	13	6,656
E271066220	1/6/2007	0:43:00	LGY-15	EAD	TO	CDH	59	102,483
E058883870	1/6/2007	0:43:00	CRE-15	EAD	EF	CDH	12	12,204
E636902687	1/6/2007	0:49:00	PTL-16	ECF	TO	OPO	15	13,215
E946929714	1/6/2007	0:49:00	PGA-13	ECE	TF	OCO	3	4,239
E302093417	1/6/2007	0:50:00	LAC-17	ECC	TF	OCO	64	42,880
E819795917	1/6/2007	0:54:00	WOD-13	EBH	TO	OCO	398	80,952
E308803177	1/6/2007	0:55:00	CHA-13	ECC	TF	OTR	4	4,660
E960962906	1/6/2007	1:01:00	VIT-23	EBD	TO	OCO	1,975	169,850
E453298243	1/6/2007	1:01:00	HAS-13	ECF	TO	OCO	74	56,736
E041377815	1/6/2007	1:01:00	NHL-17	EBD	TO	OCO	46	38,594
E824758691	1/6/2007	1:02:00	SAH-17	EBD	TF	OCO	70	14,910
E736755897	1/6/2007	1:02:00	FRG-25	ECC	TF	OCO	30	28,740
E157892038	1/6/2007	1:02:00	TSB-HY	EBF	TO	OCO	794	25,408
E133046529	1/6/2007	1:03:00	PLG-16	ECC	TF	OCO	920	71,760
E855418692	1/6/2007	1:06:00	COT-15	EBD	TF	OSV	1	1,004
E680328484	1/6/2007	1:11:00	JUA-13	EBD	TO	OCO	1,493	153,356
E650189578	1/6/2007	1:12:00	SKY-25	EBD	TO	OCO	10	13,980
E198513432	1/6/2007	1:18:00	HAP-13	EAA	TO	OCO	30	8,250
E411592975	1/6/2007	1:18:00	CLE-11	EBH	TO	OCO	813	267,477
E861695000	1/6/2007	1:20:00	DUV-12	EBD	TO	OCO	746	449,797
E438398260	1/6/2007	1:24:00	IRO-16	ECF	TO	OCO	4	2,652
E265273241	1/6/2007	1:25:00	KNM-26	EBD	EF	OCO	76	82,460
E636815748	1/6/2007	1:27:00	PGA-15	ECF	TO	OCO	20	14,720
E839515997	1/6/2007	1:28:00	FRG-16	ECC	TF	OCO	56	55,552
E075410013	1/6/2007	1:28:00	ETN-13	EBH	TF	OCO	685	7,535
E965872708	1/6/2007	1:29:00	SKY-23	EBD	TO	OPI	52	104,416
E161080475	1/6/2007	1:37:00	HWD-22	EBD	TO	OCO	17	11,951
E593955724	1/6/2007	1:38:00	VAS-23	EBL	TO	OCO	2	304
E482355471	1/6/2007	1:41:00	NBE-16	EBF	EF	OCO	26	12,974
E514187710	1/6/2007	1:41:00	PTL-13	ECF	TO	OCO	50	45,950
E815537535	1/6/2007	1:42:00	LLT-16	EBD	TO	OSV	2	1,086
E440221976	1/6/2007	1:46:00	CAP-15	ECC	TF	OFU	9	5,346
E952548237	1/6/2007	1:50:00	DUV-15	EBD	TO	OCO	1,927	472,090
E053852957	1/6/2007	1:51:00	TSB-HY	EBF	TO	OCO	794	619,334
E938251402	1/6/2007	1:53:00	ETN-13	EBH	TF	OCO	652	448,084

Qualifying Storm Event
January 5, 2007

Notification	Date	Time	Circuit	Area	Cause	Equipment	Cust Outs	Cust Mins
E586398934	1/6/2007	1:56:00	PAT-17	ECC	TF	OFU	16	12,304
E047332653	1/6/2007	2:05:00	TLN-9003	ECF	OD	OTH	633	382,332
E165213746	1/6/2007	2:09:00	UHL-25	EBD	TF	OCO	15	5,940
E296632157	1/6/2007	2:14:00	CUS-15	EAA	TF	OCO	1	507
E763023344	1/6/2007	2:16:00	COT-13	EBD	TO	OCO	24	15,936
E185032595	1/6/2007	2:23:00	CLE-14	EBH	TF	OSV	2	1,334
E519137644	1/6/2007	2:24:00	BIG-15	EAC	TO	CDH	5	1,480
E704968149	1/6/2007	2:32:00	IRO-13	ECF	TO	OCO	44	48,972
E060808569	1/6/2007	2:40:00	CLV-16	EAD	TO	OCO	1	510
E740573833	1/6/2007	2:42:00	HWD-25	EBD	EF	OCO	53	27,551
E639768773	1/6/2007	2:49:00	LAB-26	EAA	EF	OJU	1	137
E721644412	1/6/2007	2:53:00	QUI-26	ECF	TO	OCO	17	5,899
E299361359	1/6/2007	3:23:00	MKI-14	ECC	TF	OCO	4	2,068
E195073742	1/6/2007	3:51:00	NRU-25	EBE	EF	UFJ	98	50,274
E771897377	1/6/2007	3:53:00	GWR-13	EBI	TO	OCO	887	753,077
E125219603	1/6/2007	4:14:00	LYN-24	EAA	TO	OTF	1	99
E302012680	1/6/2007	4:24:00	EDG-15	ECA	TF	OFU	1	104
E219855588	1/6/2007	4:31:00	SLA-15	EAA	EF	OTF	25	4,000
E626270150	1/6/2007	4:58:00	BCH-16	EAA	TO	OSW	25	12,975
E721246987	1/6/2007	5:01:00	PLG-13	ECC	TF	OCO	65	66,755
E583272760	1/6/2007	5:16:00	PRI-21	ECC	TF	OCO	57	16,188
E022590748	1/6/2007	5:18:00	ROC-13	ECC	TF	OCO	7	7,280
E515985459	1/6/2007	5:38:00	CHI-12	ECD	TO	UPC	14	12,698
E484970553	1/6/2007	5:41:00	ROC-15	ECC	TF	OTF	1	124
E472311244	1/6/2007	5:50:00	LYN-23	EAA	TF	OCO	10	1,500
E482526476	1/6/2007	6:01:00	SOU-23	EBJ	EF	UTC	35	8,187
10711844	1/6/2007	6:20:00	BCH-16	EAA	TF	OCO	20	8,760
E119570406	1/6/2007	6:22:00	KNM-23	EBD	TO	OCO	2	916
E375561687	1/6/2007	6:39:00	HAS-15	ECF	TF	OCO	39	22,737
E305631894	1/6/2007	6:44:00	MTV-16	EAC	EF	UPT	2	962
E965616648	1/6/2007	6:58:00	BAR-16	ECC	TF	OTF	5	835
10711753	1/6/2007	7:08:00	LGY-12	EAD	EF	UPC	1	564
E992542118	1/6/2007	7:23:00	LYN-17	EAA	TF	OFC	50	6,055
E625820041	1/6/2007	7:33:00	VAS-13	EBL	TF	OCO	6	1,848
10713902	1/6/2007	7:43:00	BLA-12	EAA	EF	OFU	6	24
E716932844	1/6/2007	7:48:00	ING-16	EBD	TO	OCO	5	1,410
E398678329	1/6/2007	7:53:00	KEA-13	ECF	TO	OTF	4	1,000
E981771896	1/6/2007	8:09:00	CUS-16	EAA	TF	OFC	4	956
E282545753	1/6/2007	8:09:00	FRG-15	ECC	TF	OCO	5	2,605
E763714699	1/6/2007	8:16:00	SIN-25	ECD	EO	OFU	49	5,109
E303940098	1/6/2007	8:22:00	IRO-13	ECF	TO	OCO	41	36,068
E696042241	1/6/2007	8:29:00	SOO-25	EBI	CP	OPO	1	268
E251173148	1/6/2007	8:29:00	LUH-14	ECC	TO	OCO	104	17,784
E127982511	1/6/2007	8:37:00	CEK-16	ECE	EF	UPC	28	13,286
E919910553	1/6/2007	8:41:00	OBY-17	ECC	TF	OCO	6	2,346
E652841952	1/6/2007	8:42:00	FAL-13	EBF	CP	OPO	295	135,405
E603452481	1/6/2007	8:47:00	LAC-16	ECC	TF	OCO	4	1,552
E333240343	1/6/2007	8:49:00	NBO-26	EBD	TF	OSV	3	1,383
E067720541	1/6/2007	8:50:00	BRW-15	EAC	BA	OTF	5	1,050

Qualifying Storm Event
January 5, 2007

Notification	Date	Time	Circuit	Area	Cause	Equipment	Cust Outs	Cust Mins
E900914575	1/6/2007	8:53:00	CLE-11	EBH	EF	OAR	17	8,194
E732311534	1/6/2007	9:00:00	CHR-22	ECE	CP	OPO	200	83,000
E090944261	1/6/2007	9:03:00	BIG-12	EAC	TO	CDH	1	306
E711435330	1/6/2007	9:09:00	BLU-17	ECC	TF	OFU	7	1,512
E388771085	1/6/2007	9:12:00	NBE-13	EBF	TF	OSV	3	2,154
E840582493	1/6/2007	9:33:00	LGY-16	EAD	TO	CDH	269	281,643
E926389929	1/6/2007	9:54:00	SNQ-17	EBF	TF	OCO	4	2,184
E353193781	1/6/2007	10:04:00	SHA-13	ECA	EF	OTR	5	2,260
E345307597	1/6/2007	10:07:00	AIR-23	ECC	TF	OTF	1	103
E492719684	1/6/2007	10:26:00	THO-25	EBH	EF	OCO	29	11,136
E378062908	1/6/2007	10:27:00	CHR-25	ECE	TO	OFU	17	5,933
E739828415	1/6/2007	10:35:00	WAY-15	EBD	TF	OSV	8	2,960
E880498591	1/6/2007	10:36:00	SOU-23	EBJ	CR	ACE	1	111
E408746013	1/6/2007	10:44:00	DUV-15	EBD	TO	OTR	2	1,232
E443960219	1/6/2007	10:47:00	PTR-14	EAA	TF	OFC	1	1,477
E149486496	1/6/2007	10:53:00	AIR-23	ECC	TF	OTF	1	372
E362198511	1/6/2007	11:00:00	ELD-25	ECC	TF	OFU	22	7,480
E885801774	1/6/2007	11:02:00	LYN-23	EAA	EF	OPO	1	500
E399140498	1/6/2007	11:11:00	SWI-17	ECC	TF	OCO	5	1,050
E979392483	1/6/2007	11:21:00	CLE-13	EBH	TO	OCO	25	6,975
E083564975	1/6/2007	12:16:00	PRI-21	ECC	TF	OCO	2	668
E892182378	1/6/2007	12:39:00	IRO-17	ECF	TO	OFU	100	16,400
E652044812	1/6/2007	12:54:00	BAR-13	ECC	TF	OCO	1	426
E447165476	1/6/2007	12:59:00	BAR-15	ECC	TF	OFU	8	1,128
E070228892	1/6/2007	13:40:00	PHA-13	EBE	TF	OTF	3	660
E949890723	1/6/2007	13:48:00	CPV-15	EAD	TO	CDH	20	23,640
E377822989	1/6/2007	14:17:00	VAS-23	EBL	TO	OCO	12	4,692
E921589590	1/6/2007	14:23:00	FLD-13	EAD	EF	OGD	53	56,021
E191649564	1/6/2007	15:22:00	ELD-25	ECC	TF	OCO	4	1,352
E179922263	1/6/2007	15:57:00	UHL-25	EBD	EF	OSV	2	968
E124539014	1/6/2007	15:58:00	IRO-17	ECF	TO	OTR	1	136
E912964360	1/6/2007	16:08:00	SIL-13	ECF	TO	OTF	2	542
E543860595	1/6/2007	16:18:00	QUI-25	ECF	TO	OCO	6	2,232
E765303670	1/6/2007	16:20:00	DUV-13	EBD	PO	OSV	1	179
E535865636	1/6/2007	16:34:00	SWA-12	EAD	TO	CDH	3	1,566
E886942090	1/6/2007	16:53:00	GRV-16	ECA	TF	OTF	4	268
E008605181	1/6/2007	17:02:00	GRI-13	ECC	TF	OTF	2	236
E203955471	1/6/2007	17:11:00	SKE-22	ECE	EF	USV	1	349
E134497952	1/6/2007	17:16:00	HWD-22	EBD	EF	USV	1	474
E931201630	1/6/2007	17:21:00	LEA-17	EBI	EF	OFC	210	76,860
E081923865	1/6/2007	17:37:00	UHL-23	EBD	TF	OTR	1	1,237
E401056805	1/6/2007	17:38:00	WIN-15	ECE	EF	USV	1	1,595
E639513532	1/6/2007	17:43:00	IRO-13	ECF	EF	OTR	1	417
E711352970	1/6/2007	18:12:00	PGA-13	ECE	TO	OCO	16	2,608
E750336667	1/6/2007	18:12:00	BLU-16	ECC	TF	OFU	2	816
E171187343	1/6/2007	18:21:00	FRG-16	ECC	TF	OTF	3	57
E835397202	1/6/2007	19:05:00	PTL-13	ECF	TO	OCO	1	487
E629986199	1/6/2007	20:12:00	ETN-15	EBH	TF	OCO	10	773
E976534746	1/6/2007	20:31:00	AIR-26	ECC	TO	OCO	56	14,952

Qualifying Storm Event
January 5, 2007

Notification	Date	Time	Circuit	Area	Cause	Equipment	Cust Outs	Cust Mins
E579754362	1/6/2007	20:34:00	FLD-12	EAD	TO	OTR	3	2,058
E287878871	1/6/2007	20:44:00	GBK-13	EAD	EF	OHR	200	15,000
E756289016	1/6/2007	21:22:00	EDG-12	EBJ	UN	OTF	2	106
E165740692	1/6/2007	22:11:00	PLG-13	ECC	EO	OFU	25	2,557
E705181890	1/6/2007	22:13:00	CRE-16	EAD	EF	CDH	1	437
E762353546	1/6/2007	22:17:00	GBK-15	EAD	TO	OFC	2	202
E185164868	1/6/2007	23:57:00	SLA-16	EAA	TO	OCO	204	102,162

Terms, Codes and Definitions Used on Detail Reports

Notification	[Notification Number] A number assigned by SAP, identifying the outage record
Date	The date of the outage
Time	The time of the outage
Circuit	[Reference Circuit] The circuit identifier for the affected circuit
F/LOC	[Functional Location] The grid number where the outage occurred. If the grid number is not available, the Reference Circuit identifier occupies this field
EQT NBR	[Equipment Number] A number used to tie the equipment involved in the outage to the related information in SAP. This number does not represent the physical number of the equipment

Area	[Maintenance Planner Group] A code representing the energy, region and service center	
	EAA – Bellingham	EBJ – South King
	EAB – Lynden	EBK – Southwest King
	EAC – Skagit	EBL – Vashon
	EAD – Whidbey	ECA – Puyallup
	EBD – Redmond	ECC – Olympia
	EBE – Factoria	ECD – Port Orchard
	EBF – Snoqualmie	ECE – Poulsbo
	EBI – Enumclaw	ECF – Port Townsend

Cause	Cause of Outage	
	AO – Accident Other	EF – Equipment Failure
	BA – Bird or Animal	EO – Electrical Overload
	CP – Car Pole	FI – Faulty Installation
	CR – Customer Request	TF – Tree Off Right-of-Way
	DU – Dig-up Underground	TO – Tree On Right-of-Way
	SO – Scheduled Outage	UN – Unknown

Equipment	Affected by, or involved in the outage	
	OCN – Connector	OSW – Overhead Switch
	OCO – Overhead Conductor	OTF – Overhead Transformer Fuse
	OCR – Crossarm	OTR – Overhead Transformer
	OFC – Overhead Cut-out	OUP – OH to UG Primary
	OFS – Overhead Fire Signal	OUS – OH to UG Secondary Service
	OFU – Fuse Link/OH Line Fuse	SBF – High-side Bank Fuse
	OGS – Span Guy	SCB – Power Circuit Breaker
	OHR – Overhead Recloser	UOT – Underground Outdoor Term
	OIN – Insulator	UPC – Underground Primary Cable
	OJU- Jump Wire	UPT – Padmount Transformer
	OPI – Overhead Pin Insulator	USV – Underground Service
	OPO – Pole	UTC – Underground Terminal Fuse
	OSV – Overhead Service	UTR – Submersible Transformer
	ORE – Regulator	

Codes, Definitions – Continued

CUST OUT	[Customer Out] The number of customers without power for any given outage record
CUST MIN	[Customer Minutes] The total number of minutes customers were without power for any given record
CODE	[Storm Code] An event descriptor
	NON – Non Storm / Normal Conditions
	WTH – Weather Related (eg: wind storm, showers, etc)
	MAJ – Major event

Newsprint Media Coverage



Saturday, January 6, 2007 8:15 PM EST

New windstorm causes power outages in north Puget Sound

EVERETT, Wash. (AP) -- High winds led to widespread power outages in the north Puget Sound region, just weeks after a windstorm left much of Western Washington in the dark.

Puget Sound Energy, the state's largest electric utility, had about 6,700 customers without service, spokesman Dave Reid said Saturday. At the storm's peak, there were 34,000 people in the dark.

Most of the remaining outages were on Whidbey Island, due to a downed transmission line, Reid said.

An estimated 8,000 customers with the Snohomish County Public Utility District were without power Saturday afternoon, down from 105,000 overnight, said Mike Thorne, a spokesman for the utility.

The hardest hit areas include Lake Stevens, Snohomish, Granite Falls, east Marysville and some areas of south Snohomish County, Thorne said.

Wind gusts up to 59 mph and sustained winds of 30 mph were reported overnight Friday, Thorne said.

In Everett, a tree fell onto one family's home, just missing a girl as she and her sister lay in their beds. They were not injured.

"They came running down the stairs screaming and I opened the back door and sure enough, that big tree was gone, and it's sitting right in the middle of the house," the girls' mother, Angela Dowell told KING Television.

The storm also knocked out power and forced ski areas at Snoqualmie Pass to close.

U.S. Highway 2 was closed in both directions at milepost 54 due to downed power lines early Saturday morning and operations at Stevens Pass were temporarily shut down.

The storm came several weeks after a windstorm knocked out power to more than a million people in Western Washington.