



2007
Qualifying Storm Events

January 2, 2007

Table of Contents

Table of Contents	2
Event Description	3
Date of event	3
Event Type.....	3
Service Areas Affected	3
Number of Customers Affected.....	3
Summary of System Impacts	3
Mobilization Summary	3
Major Event Day – Qualification.....	5
Qualified Events - 2007	5
Current Event – Calculation Detail	5
Cumulative list of events that have qualified	5
Event Restoration – Cost Summary	6
Restoration Cost Detail by Qualifying Event.....	6
YTD Storm Restoration Cost Detail – Through January 2, 2007	6
Detail Documents	7
Restoration Cost Detail – Current Event	8
IEEE-1366 - Detailed List of Distribution Circuits with Outages.....	9
Terms, Codes and Definitions Used on Detail Reports.....	14
Newsprint Media Coverage	16

Event Description

Date of event

January 2, 2007

Event Type

Wind storm.

Service Areas Affected

With heavy rain and wind gusts up to 50 MPH, this moderate wind event impacted primarily the northern portion of PSE's electric service area. King and Kitsap Counties were also affected, however with a smaller number of outages.

Number of Customers Affected

This wind event resulted in the loss of electric service for approximately 24,050 customers.

Summary of System Impacts

Total Number of Outages	296
Distribution Circuits Totally Out	17
Distribution Circuits Partially Out	285

Transmission Circuits Affected	5
Substations Totally Off-line	0

Mobilization Summary

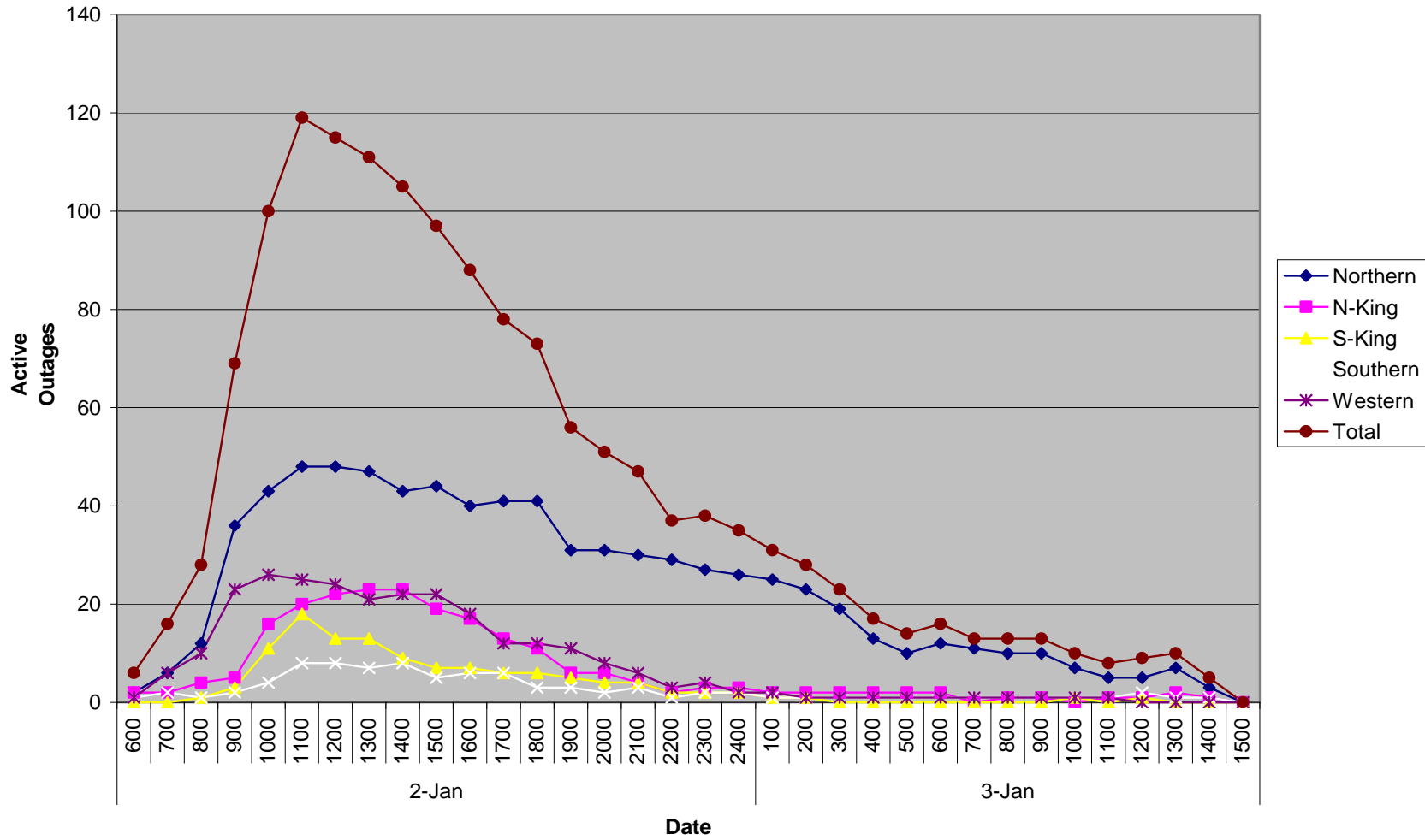
Operating bases

Base	Date Opened	Time Opened	Date Closed	Time Closed
Kitsap	1/2/2007	0830	1/3/2007	0130
Skagit	1/2/2007	0845	1/3/2007	1300
N King	1/2/2007	0945	1/2/2007	1930
S King	1/2/2007	1015	1/2/2007	1930

Emergency Operations Center

EOC	Date Opened	Time Opened	Date Closed	Time Closed
	1/2/2007	0945	1/3/2007	0000

Outage Events - January 2, 2007



Major Event Day – Qualification

IEEE 1366 Method

IEEE 1366 was established to present a set of terms and definitions which can be used to foster uniformity in the development of distribution service reliability indices, to identify factors which affect the indices, and to aid in consistent reporting practices among utilities. Also, it provides guidance for new personnel in the reliability area, and tools for internal as well as external comparisons. The Major Event Day definition was created as part of IEEE 1366 to allow for consistent calculation of reliability metrics between utilities, and enable more valid comparisons with other utility reliability metrics.

IEEE Major Event Day Calculation (2.5 BETA METHOD)

1. A threshold on daily SAIDI is computed once a year, following year end.
2. Assemble the 5 most recent years of historical values of SAIDI/day.
3. Discard any days in the data set that has a SAIDI/day of zero.
4. Find the natural logarithm of each value in the data set.
5. Compute the average Alpha and the standard deviation (Beta) of the natural logarithms computed in step 3.
6. Compute the threshold Tmed where $Tmed = \exp(\text{Alpha} + 2.5 * \text{Beta})$
7. Any day in the next year with SAIDI > Tmed is a major event day.

Puget Sound Energy's Major Event Threshold for 2007: 6.87 Minutes

Qualified Events - 2007

Current Event – Calculation Detail

Event Date	Total Customer Minutes	Average Customer Count	Daily SAIDI – Customer Minutes /Customer Count
1/2/2007	8,789,446	1,045,485	8.41

Cumulative list of events that have qualified

Date(s)	T-med Score	O&M – Deferrable Accumulation
1/2/2007	8.41	\$1,339,165

Event Restoration – Cost Summary

Restoration Cost Detail by Qualifying Event

Date	Qualified Events Deferred Account	Capital	C&D Costs Recoverable from Direct Billings (Costs Not Yet Billed)	O&M – Not Deferrable	O&M – Deferrable Accumulation	Total O&M	Total
1/2/2007	\$0	\$0	\$0	\$38,044	\$1,339,165	\$1,377,209	\$1,377,209

YTD Storm Restoration Cost Detail – Through January 2, 2007

Qualified Events Deferred Account	Capital	C&D Costs Recoverable from Direct Billings (Costs Not Yet Billed)	O&M – Not Deferrable	O&M Deferrable Accumulation	Total O&M	Total
\$0	\$0	\$0	\$38,044	\$1,339,165	\$1,377,209	\$1,377,209

Qualifying Storm Event
January 2, 2007

Detail Documents

Restoration Cost Detail – Current Event

Detailed List of Distribution Circuits with Outages

Terms, Codes & Definitions Used on Detail Reports

Newsprint Media Coverage

Restoration Cost Detail – Current Event

Puget Sound Energy January 2, 2007 Storm Damage Repair Costs							
	Qualifying Events Deferred Account	Capital	C&D Recoverable from Direct Billings (Costs Not Yet Billed)	O&M - Not Deferrable	O&M - Deferrable Accumulation	Total O&M	Total
Labor							
ST					\$25,231	\$25,231	\$25,231
OT					\$93,607	\$93,607	\$93,607
Total Labor	\$0	\$0	\$0	\$0	\$118,839	\$118,839	\$118,839
Labor OH					\$53,026	\$53,026	\$53,026
Materials					\$22,647	\$22,647	\$22,647
Contractors		\$23,890			\$1,096,035	\$1,096,035	\$1,119,925
Other Direct							
Charges		\$29,589			\$19,248	\$19,248	\$48,838
Fleet					\$25,587	\$25,587	\$25,587
Other Assessments		\$3,071		\$38,044	\$3,782	\$41,826	\$44,897
Deferred Expenses	\$1,339,165				(\$1,339,165)	(\$1,339,165)	\$0
	<u>\$1,339,165</u>	<u>\$56,550</u>	<u>\$0</u>	<u>\$38,044</u>	<u>\$0</u>	<u>\$38,044</u>	<u>\$1,433,760</u>

IEEE-1366 - Detailed List of Distribution Circuits with Outages

Notification	Date	Time	Circuit	Area	Cause	Equipment	Cust Outs	Cust Mins
E601197090	1/2/2007	0:47:00	LGY-15	EAD	TO	OCO	363	30,855
E406118415	1/2/2007	0:50:00	FLD-12	EAD	EF	OSW	132	25,231
E907790477	1/2/2007	1:00:00	CHA-15	ECC	TF	OCO	10	977
10662428	1/2/2007	1:20:00	PTL-13	ECF	TO	OCO	5	1,550
E716168671	1/2/2007	1:51:00	VAS-13	EBL	TF	OCO	51	35,394
E621976636	1/2/2007	2:54:00	BRO-16	EAD	TO	OCO	40	10,360
E832155125	1/2/2007	3:23:00	HOL-15	ECA	EF	OTF	5	362
E156188437	1/2/2007	4:04:00	CED-17	ECA	EF	OPI	10	3,000
E136291987	1/2/2007	4:52:00	MIR-15	EBF	EF	UEL	9	5,067
E918136646	1/2/2007	5:29:00	SLA-17	EAA	EF	OTF	2	252
E127393183	1/2/2007	6:02:00	VAS-12	EBL	TO	OCO	939	174,233
E471855447	1/2/2007	6:30:00	LGY-15	EAD	TO	OCO	46	66,608
E996477268	1/2/2007	6:34:00	RPT-15	ECD	TO	OCO	1	560
E107792734	1/2/2007	6:41:00	HKX-16	EAC	EF	OCO	73	69,277
E255120048	1/2/2007	6:42:00	PLU-13	ECC	EF	OTF	3	159
E111442551	1/2/2007	6:50:00	FRA-15	ECD	TO	OCO	6	1,668
E030193759	1/2/2007	6:58:00	LOL-21	ECD	TO	OCO	15	4,035
E987308059	1/2/2007	7:02:00	BRO-15	EAD	EF	OCO	66	19,668
E678225576	1/2/2007	7:06:00	CRE-15	EAD	EF	CDH	9	5,616
E148689266	1/2/2007	7:07:00	GBK-13	EAD	EF	OCO	111	115,773
E466025375	1/2/2007	7:22:00	FAL-15	EBF	TO	OCO	273	112,476
E284642167	1/2/2007	7:28:00	LEA-17	EBI	UN	OCO	1,610	96,600
E810604894	1/2/2007	7:33:00	RED-13	EBD	TF	OCO	88	6,776
E391963271	1/2/2007	7:36:00	KWH-25	EBD	TF	OCO	81	5,589
E611705528	1/2/2007	7:38:00	BIG-12	EAC	TO	OCO	222	251,874
E185342433	1/2/2007	7:45:00	FLD-13	EAD	TF	OCO	112	149,072
E476238108	1/2/2007	7:46:00	CHR-22	ECE	TO	OCO	300	157,200
E871627991	1/2/2007	7:47:00	SIL-13	ECF	TO	OCO	106	66,578
E763820110	1/2/2007	7:48:00	FRA-16	ECD	TO	OCO	300	132,900
E656641404	1/2/2007	7:49:00	FLD-15	EAD	EF	OCO	52	58,032
E101459165	1/2/2007	7:55:00	IRO-13	ECF	TO	UTC	4	252
10717724	1/2/2007	7:55:00	SWA-12	EAD	EF	OFC	86	38,012
E507724216	1/2/2007	8:00:00	SIL-15	ECD	TO	OCO	121	83,369
E581021564	1/2/2007	8:00:00	GRV-16	ECA	SO	UTC	1	300
E948501867	1/2/2007	8:01:00	CHR-25	ECE	TO	OHR	485	67,900
E261480149	1/2/2007	8:03:00	RDO-16	EBJ	TF	OCO	51	3,723
E433067220	1/2/2007	8:06:00	SIL-16	ECD	TO	OFU	668	76,152
E878647473	1/2/2007	8:07:00	KAP-16	ECA	TO	OCO	23	6,532
E938937101	1/2/2007	8:09:00	BCH-16	EAA	EF	OIN	5	2,680
E033921064	1/2/2007	8:11:00	HAM-13	EAC	EF	OCO	122	141,848
E185019860	1/2/2007	8:11:00	NLM-15	EAC	EF	OPO	54	63,396
E301645340	1/2/2007	8:11:00	HAP-13	EAA	TO	OCO	28	2,912
E510421040	1/2/2007	8:14:00	BIG-15	EAC	TO	OCO	160	184,340
E686305560	1/2/2007	8:14:00	PMA-15	ECE	TO	OCO	22	5,236
E423452871	1/2/2007	8:18:00	PTL-13	ECF	TO	OFU	1	107

Qualifying Storm Event
January 2, 2007

Notification	Date	Time	Circuit	Area	Cause	Equipment	Cust Outs	Cust Mins
E579410094	1/2/2007	8:18:00	KCR-16	EBJ	TF	OCR	1,348	297,376
E467284560	1/2/2007	8:19:00	GBK-15	EAD	TO	OPO	31	12,896
E924305944	1/2/2007	8:21:00	LOL-23	ECD	TO	OPO	562	257,958
E472932343	1/2/2007	8:23:00	BRO-16	EAD	TO	OCO	1,006	467,790
E035828580	1/2/2007	8:24:00	PET-12	EAC	EF	OTF	8	3,768
E890173681	1/2/2007	8:25:00	NLM-13	EAC	EF	OPO	2,138	625,932
E145458181	1/2/2007	8:26:00	EPO-13	ECD	TO	OTF	4	496
E037686884	1/2/2007	8:26:00	DUV-13	EBD	TF	OCO	2	352
E845161379	1/2/2007	8:27:00	KCR-17	EBJ	TO	OTR	133	141,113
E742746753	1/2/2007	8:28:00	POU-16	ECE	TO	OFU	6	618
E664744516	1/2/2007	8:33:00	NLM-12	EAC	TO	OCO	666	189,525
E096837172	1/2/2007	8:34:00	BRI-17	EAA	TO	OCO	499	136,227
E629298486	1/2/2007	8:37:00	WOB-25	EAA	TF	OPO	1,374	277,044
10718931	1/2/2007	8:42:00	TLN-0059	EAD	TF	OCO	3,202	453,675
E941405505	1/2/2007	8:42:00	FRA-13	ECD	TO	OFU	1,289	153,391
E875880063	1/2/2007	8:45:00	HAZ-13	EBE	TO	OCO	208	61,360
E477331495	1/2/2007	8:50:00	HAM-15	EAC	TF	OCR	799	930,835
E231269980	1/2/2007	8:51:00	BLA-13	EAA	EF	OFC	41	4,264
E359338201	1/2/2007	8:52:00	FRA-12	ECD	TO	OTF	11	1,078
E732851305	1/2/2007	8:53:00	SCH-15	EAA	EF	CDH	46	12,650
E436039605	1/2/2007	8:54:00	SCH-13	EAA	UN	OCO	1,275	123,675
E434264871	1/2/2007	8:56:00	WLS-16	EAC	EF	OPO	35	46,340
E034544539	1/2/2007	8:57:00	HAN-15	EAA	TO	CDH	4	1,584
E258647164	1/2/2007	8:57:00	BRE-33	ECD	EF	OTF	1	212
E929429006	1/2/2007	8:58:00	POU-15	ECE	TO	OFU	50	6,250
E013161713	1/2/2007	8:59:00	RIT-17	EAC	TO	OPO	1	1,141
E676108056	1/2/2007	9:00:00	NUG-25	EAA	EF	OTF	10	1,700
E244764072	1/2/2007	9:02:00	CHI-12	ECD	TO	OFU	10	2,220
E694326279	1/2/2007	9:02:00	IRO-17	ECF	TO	OJU	24	7,968
E806014112	1/2/2007	9:03:00	IRO-13	ECF	TO	OPO	3	4,178
E764192124	1/2/2007	9:05:00	RIT-16	EAC	EF	CDH	9	3,465
E813141443	1/2/2007	9:08:00	IRO-13	ECF	TO	OPO	1	3,304
E505221007	1/2/2007	9:09:00	QUI-25	ECF	TO	OFU	27	11,124
E371178452	1/2/2007	9:10:00	CRE-12	EAD	EF	OCO	9	2,880
E994867477	1/2/2007	9:14:00	EGT-28	EBE	EF	OCO	8	1,520
E799778966	1/2/2007	9:18:00	DUV-15	EBD	TO	OCO	9	2,808
E049062933	1/2/2007	9:19:00	PET-16	EAC	EF	CDH	10	6,410
E243664047	1/2/2007	9:22:00	UHL-25	EBD	TO	OCO	120	56,400
E955696406	1/2/2007	9:25:00	VAS-22	EBL	TO	OCO	5	2,265
E856876274	1/2/2007	9:25:00	BTR-23	EBE	EF	UFJ	298	59,252
E155323088	1/2/2007	9:26:00	LAB-23	EAA	EF	OSW	2	248
E330601090	1/2/2007	9:27:00	ING-13	EBD	TO	OCO	1,791	267,573
E168975916	1/2/2007	9:27:00	MWD-16	EBE	TO	OCO	77	8,701
E140681772	1/2/2007	9:28:00	ROL-15	EBJ	TF	OCO	2,046	243,474
E674666670	1/2/2007	9:28:00	OSC-23	EBI	TO	OCO	9	2,853
E724895648	1/2/2007	9:29:00	BEL-17	EBJ	TF	OCO	6	1,566
E483923722	1/2/2007	9:31:00	WIS-12	EBF	TO	OCO	11	3,289
E691643781	1/2/2007	9:32:00	DUV-12	EBD	TO	OCO	19	8,740
E469309385	1/2/2007	9:32:00	PLA-23	EBD	EF	OCN	6	1,188

Qualifying Storm Event
January 2, 2007

Notification	Date	Time	Circuit	Area	Cause	Equipment	Cust Outs	Cust Mins
E320140799	1/2/2007	9:40:00	FWY-11	EBJ	TF	OFU	29	8,990
E152683872	1/2/2007	9:41:00	WAY-15	EBD	TF	OTF	4	616
E137317080	1/2/2007	9:44:00	MTV-15	EAC	TO	OTF	1	376
E515338026	1/2/2007	9:48:00	EDG-12	EBJ	TF	OCO	63	12,096
E241865531	1/2/2007	9:49:00	EPO-12	ECD	TO	OCO	1,381	154,672
E867074866	1/2/2007	9:49:00	FRU-25	ECA	TF	OCO	9	2,905
E881535314	1/2/2007	9:50:00	DGR-15	ECA	TF	OCO	277	19,390
E305801200	1/2/2007	9:53:00	PLG-13	ECC	TF	OJU	211	58,447
E587622462	1/2/2007	9:53:00	PAN-14	EBJ	TO	OCO	2,254	211,876
E329839485	1/2/2007	9:53:00	PMA-12	ECE	TF	OCO	32	12,560
E391173511	1/2/2007	10:00:00	PHA-13	EBE	TF	OFU	16	5,637
E896363815	1/2/2007	10:00:00	FAL-13	EBF	TO	OCO	24	6,816
E666796761	1/2/2007	10:02:00	LON-26	ECC	TO	OPO	1,285	125,055
E477401280	1/2/2007	10:03:00	BIG-16	EAC	TF	OSV	2	1,164
E350560631	1/2/2007	10:05:00	THU-16	ECC	EF	OCN	1	55
E633990141	1/2/2007	10:09:00	SIL-15	ECE	TO	OCO	2	1,090
E484944588	1/2/2007	10:10:00	PAN-12	EBJ	TF	OCO	682	75,020
E112170020	1/2/2007	10:15:00	MAP-15	EBF	TO	OCO	217	46,221
E241142831	1/2/2007	10:16:00	BRW-13	EAC	TO	OSV	50	8,000
E350096018	1/2/2007	10:17:00	RDO-15	EBJ	TF	OCO	1	530
E564773342	1/2/2007	10:23:00	STW-13	ECA	TF	OCO	55	17,810
E642065543	1/2/2007	10:25:00	NOB-24	EBE	EF	OPO	1	356
E899445787	1/2/2007	10:25:00	BUC-16	ECA	TO	OCO	5	2,067
E890523988	1/2/2007	10:27:00	GWR-16	EBI	TF	OSV	31	11,718
E157065646	1/2/2007	10:30:00	LYN-17	EAA	EF	OCO	12	1,512
E902140418	1/2/2007	10:33:00	WIN-12	ECE	TF	OCO	2	798
E108757696	1/2/2007	10:33:00	ROC-16	ECC	EF	OTR	4	948
E800288672	1/2/2007	10:44:00	BLA-13	EAA	EF	OFC	21	3,885
E147387329	1/2/2007	10:47:00	BLU-13	ECC	EF	OTF	1	66
E383435727	1/2/2007	10:51:00	RJN-13	EBJ	TF	OSV	4	756
E753550125	1/2/2007	10:52:00	JUA-13	EBD	PO	OSV	6	438
E474445679	1/2/2007	11:01:00	PTL-13	ECF	TO	OFC	2	947
E598156902	1/2/2007	11:05:00	BUC-26	ECA	TF	OCO	2	200
E168832631	1/2/2007	11:05:00	FRA-13	ECD	TO	OCO	26	5,486
E703842825	1/2/2007	11:10:00	HKX-12	EAC	TO	OSV	9	1,512
E644307267	1/2/2007	11:14:00	EGT-27	EBE	TF	OSV	15	4,035
E814331793	1/2/2007	11:23:00	HKX-13	EAC	EF	OPO	1	1,237
E925639696	1/2/2007	11:25:00	LMD-12	EBJ	TF	OSV	8	240
E339752269	1/2/2007	11:40:00	FRA-15	ECD	TO	OTF	1	50
E930189501	1/2/2007	11:49:00	CRE-16	EAD	EF	CDH	5	2,980
E198415096	1/2/2007	11:51:00	CAS-16	EBH	EF	OTR	1	159
E614395503	1/2/2007	11:59:00	NOR-23	EBD	TO	OCO	64	37,632
E440737389	1/2/2007	12:10:00	MUR-16	ECE	TF	OSV	1	246
E383237599	1/2/2007	12:14:00	STA-16	EBJ	EF	OTR	2	812
E258725897	1/2/2007	12:16:00	VIT-16	EBD	EF	OCO	1	216
E475363522	1/2/2007	12:23:00	FWD-15	EBJ	TF	OFU	91	8,827
10717735	1/2/2007	12:29:00	VAS-22	EBL	TO	OCO	5	695
E414768183	1/2/2007	12:33:00	LWS-13	EBI	TF	OTR	5	3,440
E644748902	1/2/2007	12:38:00	EPO-12	ECD	TO	OCO	14	1,414

Qualifying Storm Event
January 2, 2007

Notification	Date	Time	Circuit	Area	Cause	Equipment	Cust Outs	Cust Mins
E726518880	1/2/2007	12:39:00	MWD-16	EBE	TO	OCO	1	51
E939215095	1/2/2007	12:45:00	FWD-16	EBJ	TF	OFU	9	675
E049302053	1/2/2007	12:45:00	CWD-25	EBD	TF	OSV	29	6,235
E459921148	1/2/2007	12:48:00	BLU-13	ECC	EO	OFU	98	12,642
E983666877	1/2/2007	12:54:00	HYA-13	EBF	EF	USV	1	296
E002907567	1/2/2007	13:06:00	SME-15	EBE	EF	USV	5	1,225
E295300339	1/2/2007	13:17:00	PMA-13	ECE	TO	OFU	55	8,470
E492241987	1/2/2007	13:17:00	PMA-15	ECE	TO	OCO	1,193	220,043
E510679193	1/2/2007	13:23:00	DES-12	EBJ	TF	OJU	75	10,275
10713809	1/2/2007	13:29:00	IRO-13	ECF	EF	OTR	3	1,833
E592594855	1/2/2007	13:31:00	MTV-16	EAC	EF	OPO	25	14,825
E321115766	1/2/2007	13:39:00	SCH-15	EAA	TO	OCO	55	4,730
E670800985	1/2/2007	13:51:00	MKI-17	ECC	TF	OCO	1	229
E576973971	1/2/2007	13:59:00	FNW-16	ECD	TO	ACE	1	68
E036740674	1/2/2007	14:01:00	FRU-22	ECA	TF	OCO	3	177
E646277395	1/2/2007	14:06:00	VAS-13	EBL	TO	OJU	26	7,228
E175785001	1/2/2007	14:11:00	CPV-15	EAD	EF	CDH	26	25,454
E108164442	1/2/2007	14:16:00	VAS-12	EBL	TF	CDH	12	4,668
E617578535	1/2/2007	14:18:00	BRS-24	EAC	TO	OCR	433	250,652
E085009208	1/2/2007	14:24:00	ROS-21	EBD	TF	OSV	4	624
E598147016	1/2/2007	14:26:00	BLA-13	EAA	TO	OSW	30	5,070
E144364509	1/2/2007	14:30:00	EGT-12	EBE	EF	OFU	1	150
E128787892	1/2/2007	14:37:00	WIS-13	EBF	EF	OCR	10	2,630
E362742406	1/2/2007	14:55:00	NBE-15	EBF	TO	OCO	14	3,164
E013444916	1/2/2007	15:03:00	PAT-15	ECC	TF	OSV	1	112
E617909777	1/2/2007	15:09:00	BRW-15	EAC	TO	OFC	3	846
E658032420	1/2/2007	15:10:00	SCH-13	EAA	EF	OCR	4	1,032
E964419050	1/2/2007	15:27:00	STW-15	ECA	EF	OSV	1	117
E366665606	1/2/2007	15:30:00	HOB-16	EBI	TF	OTF	1	160
E931142531	1/2/2007	15:34:00	PGA-13	ECE	TO	OTF	2	328
E927418302	1/2/2007	15:38:00	SWA-12	EAD	TO	OTR	15	8,430
E096524474	1/2/2007	15:47:00	OVE-12	EBE	EF	OCN	1	120
E715940878	1/2/2007	15:55:00	CUS-13	EAA	TO	OFC	70	6,300
E937436893	1/2/2007	16:00:00	NLM-12	EAC	EF	OFC	22	3,872
E480991205	1/2/2007	16:13:00	CHR-22	ECE	TO	OCO	111	32,634
10662442	1/2/2007	16:16:00	BON-16	ECA	TF	OSV	1	101
E139083199	1/2/2007	16:45:00	NBO-25	EBD	EF	OFC	1	125
E096399631	1/2/2007	16:46:00	WOB-23	EAA	TO	OTF	2	222
E765571425	1/2/2007	16:51:00	MAN-12	ECD	EF	UPC	107	31,458
E293782614	1/2/2007	17:10:00	KCR-16	EBJ	TF	OPO	50	2,250
E222956963	1/2/2007	17:19:00	LMD-16	EBJ	EF	UTR	58	4,801
E884795238	1/2/2007	17:23:00	BUC-16	ECA	TO	OCO	1	267
E281521789	1/2/2007	17:23:00	THO-04	EBH	EF	OIN	15	2,415
E763158203	1/2/2007	17:30:00	FRA-13	ECD	TO	OCO	12	4,452
E518599395	1/2/2007	17:54:00	RIT-16	EAC	EF	CDH	32	12,192
E761405277	1/2/2007	17:56:00	GBK-15	EAD	EF	OTR	4	976
E073157652	1/2/2007	17:59:00	OSC-23	EBI	TF	OCO	4	960
E062884531	1/2/2007	18:06:00	DGR-13	ECA	TO	OCO	15	585
E635887142	1/2/2007	18:36:00	TAN-15	ECC	EF	USV	1	1,205

Qualifying Storm Event
January 2, 2007

Notification	Date	Time	Circuit	Area	Cause	Equipment	Cust Outs	Cust Mins
E067066484	1/2/2007	19:01:00	HAP-16	EAA	TF	CDH	50	11,050
E576611045	1/2/2007	19:35:00	MIL-17	ECE	TO	OTF	3	315
E668764010	1/2/2007	20:45:00	VAS-13	EBL	TO	OCO	1	285
E833626885	1/2/2007	22:21:00	FRG-16	ECC	EO	OSV	1	104
E633500257	1/2/2007	22:37:00	MUR-16	ECE	EF	UTC	19	5,684
E961428071	1/2/2007	22:43:00	NBE-16	EBF	TO	OCO	3,468	17,340
E530232971	1/2/2007	22:56:00	PHA-15	EBE	EF	OPO	1	119

Terms, Codes and Definitions Used on Detail Reports

Notification	[Notification Number] A number assigned by SAP, identifying the outage record
Date	The date of the outage
Time	The time of the outage
Circuit	[Reference Circuit] The circuit identifier for the affected circuit
F/LOC	[Functional Location] The grid number where the outage occurred. If the grid number is not available, the Reference Circuit identifier occupies this field
EQT NBR	[Equipment Number] A number used to tie the equipment involved in the outage to the related information in SAP. This number does not represent the physical number of the equipment

Area	[Maintenance Planner Group] A code representing the energy, region and service center	
	EAA – Bellingham	EBJ – South King
	EAB – Lynden	EBK – Southwest King
	EAC – Skagit	EBL – Vashon
	EAD – Whidbey	ECA – Puyallup
	EBD – Redmond	ECC – Olympia
	EBE – Factoria	ECD – Port Orchard
	EBF – Snoqualmie	ECE – Poulsbo
	EBI – Enumclaw	ECF – Port Townsend

Cause	Cause of Outage	
	AO – Accident Other	EF – Equipment Failure
	BA – Bird or Animal	EO – Electrical Overload
	CP – Car Pole	FI – Faulty Installation
	CR – Customer Request	TF – Tree Off Right-of-Way
	DU – Dig-up Underground	TO – Tree On Right-of-Way
	SO – Scheduled Outage	UN – Unknown

Equipment	Affected by, or involved in the outage	
	OCN – Connector	OSW – Overhead Switch
	OCO – Overhead Conductor	OTF – Overhead Transformer Fuse
	OCR – Crossarm	OTR – Overhead Transformer
	OFC – Overhead Cut-out	OUP – OH to UG Primary
	OFS – Overhead Fire Signal	OUS – OH to UG Secondary Service
	OFU – Fuse Link/OH Line Fuse	SBF – High-side Bank Fuse
	OGS – Span Guy	SCB – Power Circuit Breaker
	OHR – Overhead Recloser	UOT – Underground Outdoor Term
	OIN – Insulator	UPC – Underground Primary Cable
	OJU- Jump Wire	UPT – Padmount Transformer
	OPI – Overhead Pin Insulator	USV – Underground Service
	OPO – Pole	UTC – Underground Terminal Fuse
	OSV – Overhead Service	UTR – Submersible Transformer
	ORE – Regulator	

Codes, Definitions – Continued

CUST OUT	[Customer Out] The number of customers without power for any given outage record
CUST MIN	[Customer Minutes] The total number of minutes customers were without power for any given record
CODE	[Storm Code] An event descriptor
	NON – Non Storm / Normal Conditions
	WTH – Weather Related (eg: wind storm, showers, etc)
	MAJ – Major event

Newsprint Media Coverage

Seattle Post-Intelligencer

Tuesday, January 2, 2007

Power restored to most after new storm

P-I STAFF

Seattle City Light has restored electricity to nearly all of the 600 homes that had lost power Tuesday because of the most recent storm, the utility said.

Crews were expected to turn the power back on for the remaining 80 customers in Delridge by about 6 p.m., City Light spokespeople said.

Power for nearly all of the 400 customers in West Seattle was back by about 1 p.m. About 200 Shoreline customers also regained power Tuesday around 9:30 a.m.

Utility officials stressed that additional power failures might occur before the storm ceases.

"City Light reminds customers that the soil is soaked, and some trees were weakened from the last storm, so even a mild storm could cause more damage and more outages," said City Light spokesman Peter Clarke in a statement.

A storm system is expected to bring gusts of up to 40 mph and more intense rain to the Seattle area Tuesday afternoon, the National Weather Service said.

While the agency has issued a wind advisory until 4 p.m. Tuesday, the system is not expected to be anything like what swept over the region in November and December.

Puget Sound Energy reported about 150 homes without power around 1:30 p.m. on Tuesday. The power failures were scattered around five Puget Sound counties the utility serves, and PSE officials weren't anticipating many more.

"(The storm) is a baby compared to the last one," spokesman Dave Reid said.

There were a small number of homes without power in King County, but they weren't concentrated in any one area, Reid said.

Tuesday's specific wind advisory is in effect for the Seattle, Bremerton, Tacoma and Strait of Juan de Fuca areas. Some of these areas could see winds as high as 50 to 60 mph.

The agency said it is possible that branches could snap, trees could fall and more power outages could occur.

Winter conditions Tuesday also caused snow to slide onto U.S. Highway 2 around 7:30 a.m., state transportation officials said.

The slide was blocking all lanes in both directions. Crews reopened the highway at 10 a.m.

Seattle-area residents can expect a quarter to a half inch of rain Tuesday, said Carl Cerniglia, a Weather Service meteorologist in Seattle.

From Monday morning until Tuesday morning, he added, three-quarters to 1 inch of rain had fallen in the region.

Sustained winds for Tuesday in the Seattle area are estimated to be between 15 to 25 mph, he added.

For areas outside of Seattle, though, the agency said a flood watch remains in effect for King, Snohomish, Mason, Clallam, Jefferson, Skagit and Grays Harbor counties.

Forecasters are keeping an eye on heavy rainfall in the Olympics, as well.

"Rivers draining off the Cascades from King County northward also have a threat of significant rises," according to the Weather Service Web site.

A flood warning has been issued for the Skokomish River, which is expected to go over its flood level Tuesday, on the Olympic Peninsula.

Qualifying Storm Event
January 2, 2007

From Monday morning to Tuesday morning, the storm system had dropped 2 to 4 inches of precipitation in the Cascades, particularly in the area north of Snoqualmie Pass.

The precipitation includes rain, snow, freezing rain and sleet.

Cerniglia said forecasters expect rain to fall in the Cascades for the rest of Tuesday.

KING COUNTY Journal

January 03, 2007

If it's wet and windy, it must be wintertime: Rough weather causes power outages, traffic snarls

By Bruce Rommel
Journal Reporter

Heavy rains Tuesday were blamed for scattered power outages around the Eastside and south King County, a spate of accidents on local freeways and flooding of streets that slowed peak afternoon traffic in some communities.

Minor flooding also was expected along the Tolt River near Carnation sometime Tuesday night, but the National Weather Service and King County officials weren't anticipating any serious problems.

The Weather Service is calling for more rain showers through Saturday, continuing a wet weather trend. At Sea-Tac Airport, 2.09 inches of rain fell during the 24-hour period that ended at 4 p.m. Tuesday.

"This is your typical winter storm: We get some rain and we get some wind," said Johnny Burg, a Weather Service meteorologist.

The storm system that swept through the area Tuesday brought high winds that caused about 80 scattered power outages around the nine counties served by Puget Sound Energy. About 30 of those were in King County, said Dorothy Bracken, a PSE spokeswoman.

"Most of these were tree limbs breaking off and falling onto the power lines, and it was just a matter of our crews getting there to brush them off the lines," Bracken said.

She said PSE crews hoped to have service restored to all customers by 8 p.m. Tuesday.

Heavy rainfall contributed to a number of accidents along the county's freeways. While troopers normally respond to 10 or 15 calls a day, by 5:30 p.m. Tuesday, they'd responded to 42.

"It's a lot more than normal," trooper Jeff Merrill said, though he noted none of the accidents were serious or blocking. "There were a lot of debris calls, standing water, and one- to four-car accidents spread throughout the county."

During heavy rain, it's incumbent upon drivers to slow down, be observant and increase following distance, Merrill said. In the event one does start to hydroplane, Merrill advised staying off the brakes, letting the car slow down and trying to steer in a straight line.

"When you regain control, drive accordingly," he said. "It might behoove you to switch lanes. The big thing is you just gotta slow down. That's usually all that's necessary to ensure you have a safe commute."

In Bellevue, a tree blown onto power lines forced the closure of Southeast 64th Street in the 11300 block for about an hour. It was reopened about 2:30 p.m.

In Auburn, a portion of Auburn Way South near the State Route 18 interchange and several busy arterials around downtown Kent were closed because of minor flooding.

The persistent rains prompted a Weather Service advisory for chances of minor flooding in King, Snohomish, Mason and Skagit counties.

In King County, minor flooding was anticipated only along the Tolt River. Water was expected to rise over Tolt River Road near Carnation, the Weather Service advisory said.

Linda Thielke, spokeswoman for the county's Department of Transpiration, said road services crews planned to be watching overnight for any problems along the roadways where recent storms have caused flooding.

Burg said the rains and heavy winds are typical January weather patterns.

"Every winter we get a good soaking from these rains and the winds," he said.

According to Weather Service records, January normally is the third-wettest month of the year. November and December, respectively, are the wettest and second-wettest months.