

Exh. EL-2  
Docket UE-19 \_\_\_\_  
Witness: Etta Lockey

**BEFORE THE WASHINGTON  
UTILITIES AND TRANSPORTATION COMMISSION**

WASHINGTON UTILITIES AND  
TRANSPORTATION COMMISSION,

Complainant,

v.

PACIFICORP dba  
PACIFIC POWER & LIGHT COMPANY

Respondent.

Docket UE-19 \_\_\_\_

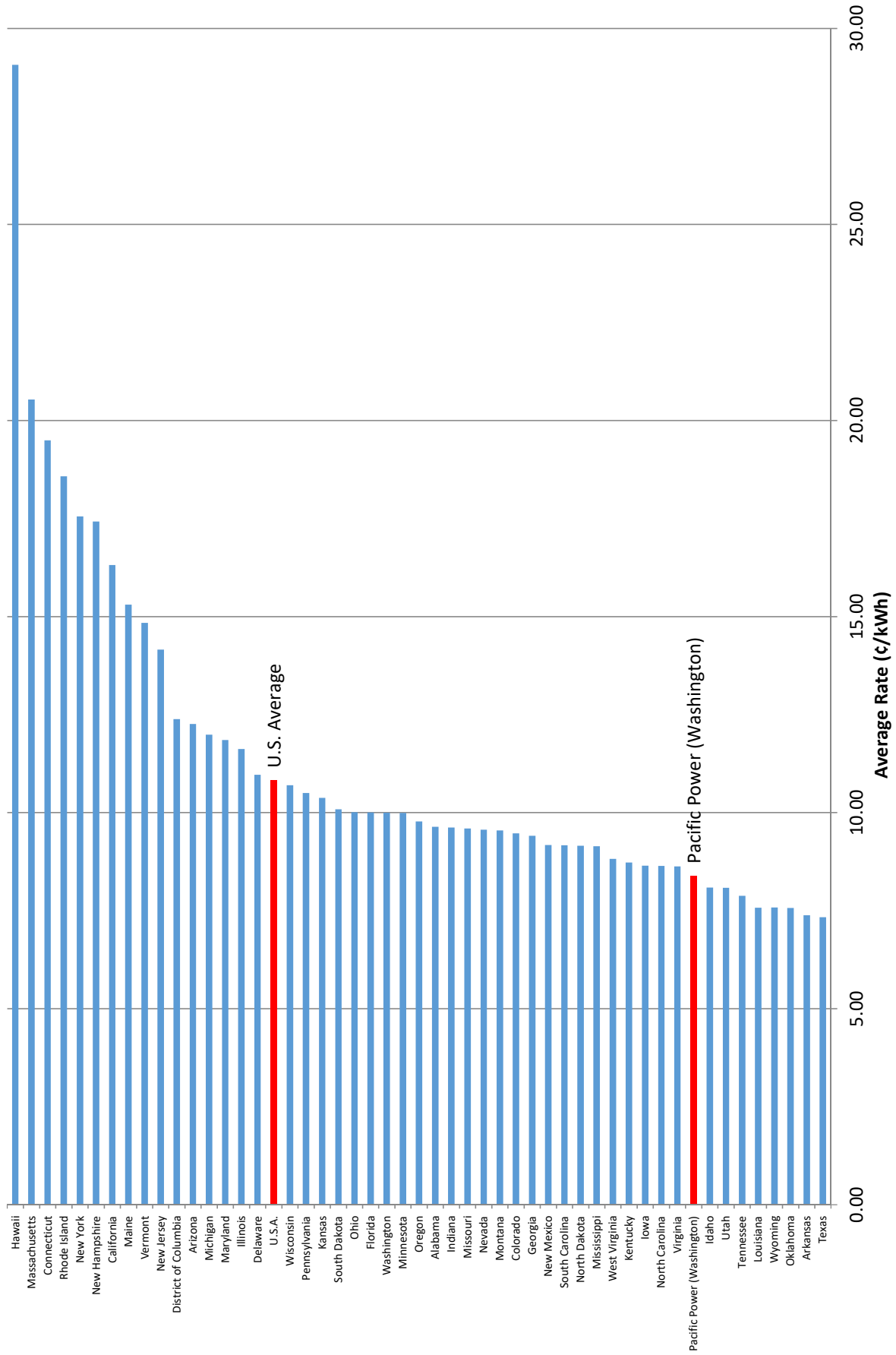
**PACIFICORP**

**EXHIBIT OF ETTA LOCKEY**

**PacifiCorp's Washington Rates Compared to National Averages**

**December 2019**

# Total Retail Average Rates



Source: Edison Electric Institute Sales and Revenue Data for the 12 months ending December 2018

**Total Retail Average Rates, 12 Months Ending Dec 2018**

Region	Ordered by Region		Alphabetical		Ordered by Rate	
	State	Total Retail Average Rate (in cents/kWh)	State	Average Rate	State	Average Rate
New England	Connecticut	19.50	Alabama	9.64	Texas	7.33
	Maine	15.31	Arizona	12.27	Arkansas	7.38
	Massachusetts	20.54	Arkansas	7.38	Oklahoma	7.57
	New Hampshire	17.42	California	16.32	Wyoming	7.58
	Rhode Island	18.58	Colorado	9.47	Louisiana	7.58
Mid-Atlantic	Vermont	14.84	Connecticut	19.50	Tennessee	7.88
	New Jersey	14.16	Delaware	10.97	Utah	8.08
	New York	17.56	District of Columbia	12.39	Idaho	8.09
	Pennsylvania	10.50	Florida	10.01	Pacific Power (Washington)	8.39
East North Central	Illinois	11.63	Georgia	9.41	Virginia	8.63
	Indiana	9.62	Hawaii	29.07	North Carolina	8.64
	Michigan	11.99	Idaho	8.09	Iowa	8.65
	Ohio	10.01	Illinois	11.63	Kentucky	8.73
West North Central	Wisconsin	10.70	Indiana	9.62	West Virginia	8.83
	Iowa	8.65	Iowa	8.65	Mississippi	9.14
	Kansas	10.38	Kansas	10.38	North Dakota	9.15
	Minnesota	9.99	Kentucky	8.73	South Carolina	9.17
	Missouri	9.59	Louisiana	7.58	New Mexico	9.18
South Atlantic	North Dakota	9.15	Maine	15.31	Georgia	9.41
	South Dakota	10.08	Maryland	11.85	Colorado	9.47
	Delaware	10.97	Maryland	11.85	Montana	9.55
	District of Columbia	12.39	Massachusetts	20.54	Nevada	9.56
	Florida	10.01	Michigan	11.99	Missouri	9.59
East South Central	Georgia	9.41	Minnesota	9.99	Montana	9.55
	Alabama	9.64	Mississippi	9.14	Nevada	9.56
	Kentucky	9.14	Missouri	9.59	Alabama	9.64
	West Virginia	8.83	Montana	9.55	Oregon	9.78
	Alabama	9.64	Nevada	9.56	Minnesota	9.99
	Kentucky	9.14	New Hampshire	17.42	Washington	10.00
	West Virginia	8.83	New Jersey	14.16	Florida	10.01
	Alabama	9.64	New Mexico	9.18	Ohio	10.01
	Kentucky	9.14	New York	17.56	South Dakota	10.08
	Mississippi	9.14	North Carolina	8.64	Kansas	10.38
West South Central	Tennessee	7.88	North Dakota	9.15	Pennsylvania	10.50
	Louisiana	7.58	Ohio	10.01	Wisconsin	10.70
	Oklahoma	7.57	Oklahoma	7.57	U.S.A.	10.83
	Texas	7.33	Oregon	9.78	Delaware	10.97
	Arizona	12.27	Pennsylvania	10.50	Illinois	11.63
Mountain	Colorado	9.47	Rhode Island	18.58	Maryland	11.85
	Idaho	8.09	South Carolina	9.17	Michigan	11.99
	Montana	9.55	South Dakota	10.08	Arizona	12.27
	Nevada	9.56	Tennessee	7.88	District of Columbia	12.39
Pacific	New Mexico	9.18	Texas	7.33	New Jersey	14.16
	Utah	8.08	U.S.A.	10.83	Vermont	14.84
	Wyoming	7.58	Utah	8.08	Maine	15.31
	California	16.32	Vermont	14.84	California	16.32
Hawaii	Oregon	9.78	Virginia	8.63	New Hampshire	17.42
	Washington	10.00	Washington	10.00	New York	17.56
	Hawaii	29.07	West Virginia	8.83	Rhode Island	18.58
U.S.A.	10.83	Wisconsin	10.70	Connecticut	19.50	
		Wyoming	7.58	Massachusetts	20.54	
				Hawaii	29.07	

(Source: Typical Bills and Average Rates Report, Winter 2019, Edison Electric Institute)

PacificCorp Total (Weighted Average of Oregon, Washington, California, Utah, Idaho, & Wyoming average rates) 8.37  
 Rocky Mountain Power Total (Weighted Average of Utah, Idaho, & Wyoming average rates) 7.81  
 Pacific Power Total (Weighted Average of Oregon, Washington, & California average rates) 9.56  
 Pacific Power (Washington) 8.39