



2006  
Qualifying Storm Events

November 13, 2006

## Table of Contents

<b>Table of Contents .....</b>	<b>2</b>
<b>Event Description .....</b>	<b>3</b>
<b>Date of event .....</b>	<b>3</b>
<b>Event Type.....</b>	<b>3</b>
<b>Service Areas Affected .....</b>	<b>3</b>
<b>Number of Customers Affected.....</b>	<b>3</b>
<b>Summary of System Impacts .....</b>	<b>3</b>
<b>Mobilization Summary .....</b>	<b>3</b>
<b>Major Event Day – Qualification.....</b>	<b>5</b>
<b>Qualified Events - 2006 .....</b>	<b>5</b>
<b>Current Event – Calculation Detail .....</b>	<b>5</b>
<b>Cumulative list of events that have qualified .....</b>	<b>5</b>
<b>Event Restoration – Cost Summary .....</b>	<b>6</b>
<b>Restoration Cost Detail by Qualifying Event.....</b>	<b>6</b>
<b>YTD Storm Restoration Cost Detail – Through November 13, 2006 .....</b>	<b>6</b>
<b>Detail Documents .....</b>	<b>7</b>
<b>Restoration Cost Detail – Current Event .....</b>	<b>8</b>
<b>IEEE-1366 - Detailed List of Distribution Circuits with Outages.....</b>	<b>9</b>
<b>Terms, Codes and Definitions Used on Detail Reports.....</b>	<b>14</b>
<b>Newsprint Media Coverage .....</b>	<b>16</b>

## Event Description

### Date of event

November 13, 2006

### Event Type

Wind storm.

### Service Areas Affected

Winds gusting to 50 MPH resulted in outages throughout the southern portion of Puget Sound Energy's service territory. The electric system in Thurston County, Pierce County and the southern portion of King County experienced storm damage resulting from falling trees and large tree limbs.

### Number of Customers Affected

Winds resulted in approximately 45,000 customers losing electric service over the course of this event.

### Summary of System Impacts

<b>Total Number of Outages</b>	<b>276</b>
Distribution Circuits Totally Out	7
Distribution Circuits Partially Out	269

Transmission Circuits Affected	6
Substations Totally Off-line	2

### Mobilization Summary

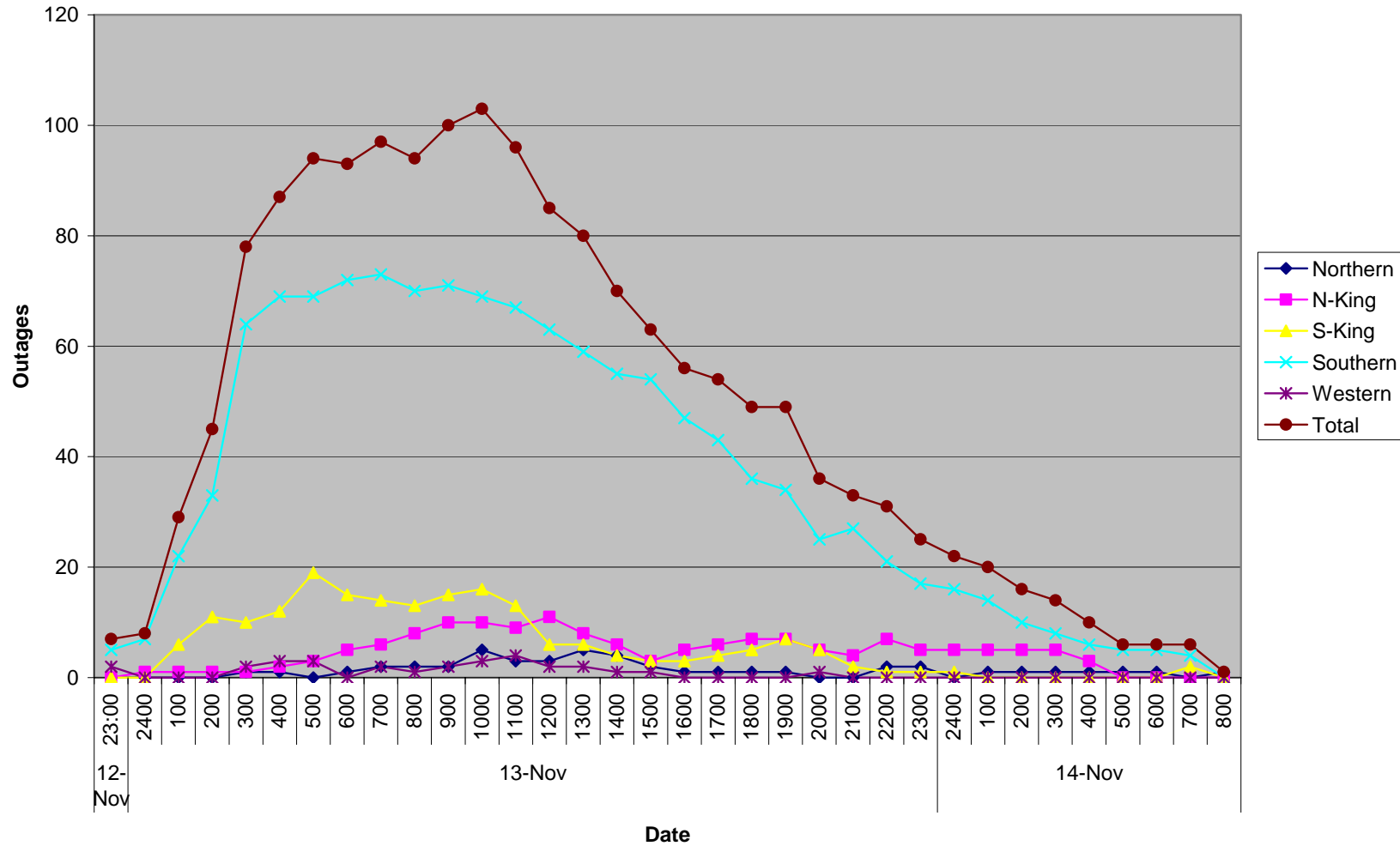
#### Operating bases

Base	Date Opened	Time Opened	Date Closed	Time Closed
Pierce	11/13/06	01:15	11/13/06	22:30
Thurston	11/13/06	01:15	11/14/06	05:00
S-King	11/13/06	04:30	11/13/06	18:30

#### Emergency Operations Center

EOC	Date Opened	Time Opened	Date Closed	Time Closed
	11/13/2006	06:30	11/13/06	19:30

### Outage Events - November 13, 2006



## Major Event Day – Qualification

### IEEE 1366 Method

IEEE 1366 was established to present a set of terms and definitions which can be used to foster uniformity in the development of distribution service reliability indices, to identify factors which affect the indices, and to aid in consistent reporting practices among utilities. Also, it provides guidance for new personnel in the reliability area, and tools for internal as well as external comparisons. The Major Event Day definition was created as part of IEEE 1366 to allow for consistent calculation of reliability metrics between utilities, and enable more valid comparisons with other utility reliability metrics.

#### IEEE Major Event Day Calculation (2.5 BETA METHOD)

1. A threshold on daily SAIDI is computed once a year, following year end.
2. Assemble the 5 most recent years of historical values of SAIDI/day.
3. Discard any days in the data set that has a SAIDI/day of zero.
4. Find the natural logarithm of each value in the data set.
5. Compute the average Alpha and the standard deviation (Beta) of the natural logarithms computed in step 3.
6. Compute the threshold Tmed where  $Tmed = \exp(\text{Alpha} + 2.5 * \text{Beta})$
7. Any day in the next year with SAIDI > Tmed is a major event day.

**Puget Sound Energy's Major Event Threshold for 2006: 4.97 Minutes**

## Qualified Events - 2006

### Current Event – Calculation Detail

Event Date	Total Customer Minutes	Average Customer Count	Daily SAIDI – Customer Minutes /Customer Count
11/13/2006	13,806,051	1,042,369	13.24

### Cumulative list of events that have qualified

Date(s)	T-med Score	O&M – Deferrable Accumulation
1/1/2006	5.35	\$242,708
1/31/2006	11.19	\$653,176
2/4/2006	161.65	\$6,104,116
2/10/2006	8.34	\$0
2/17/2006	40.13	\$0
3/8/2006	6.16	\$0
11/13/2006	13.24	\$0

## Event Restoration – Cost Summary

### Restoration Cost Detail by Qualifying Event

Date	Qualified Events Deferred Account	Capital	C&D Costs Recoverable from Direct Billings (Costs Not Yet Billed)	O&M – Not Deferrable	O&M – Deferrable Accumulation	Total O&M	Total
1/1/2006	\$0	\$0	\$0	\$23,995	\$242,708	\$266,703	\$266,703
1/31/2006	\$0	\$70,613	\$0	\$35,780	\$653,176	\$688,956	\$759,569
2/4/2006	\$2,853,981	\$311,579	\$0	\$395,638	\$6,104,116	\$6,499,754	\$9,665,314
2/10/2006	\$468,301	\$110,144	\$0	\$17,139	\$0	\$17,139	\$595,584
2/17/2006	\$3,309,247	\$141,574	\$0	\$127,653	\$0	\$127,653	\$3,578,474
3/8/2006	\$444,758	\$3,929	\$0	\$34,731	\$0	\$34,731	\$483,418
11/13/2006	\$1,490,582	\$26,308	\$0	\$87,272	\$0	\$87,272	\$1,604,162

### YTD Storm Restoration Cost Detail – Through November 13, 2006

Qualified Events Deferred Account	Capital	C&D Costs Recoverable from Direct Billings (Costs Not Yet Billed)	O&M – Not Deferrable	O&M Deferrable Accumulation	Total O&M	Total
\$8,566,869	\$664,147	\$0	\$722,208	\$7,000,000	\$7,722,208	\$16,953,224

Qualifying Storm Event  
November 13, 2006

## Detail Documents

**Restoration Cost Detail – Current Event**

**Detailed List of Distribution Circuits with Outages**

**Terms, Codes & Definitions Used on Detail Reports**

**Newsprint Media Coverage**

**Restoration Cost Detail – Current Event**

<b>Puget Sound Energy</b>							
<b>November 13, 2006 Storm Damage Repair Costs</b>							
	Qualifying Events Deferred Account	Capital	C&D Recoverable from Direct Billings (Costs Not Yet Billed)	O&M - Not Deferrable	O&M - Deferrable Accumulation	Total O&M	Total
Labor							
ST					\$9,054	\$9,054	\$9,054
OT		\$0			\$78,378	\$78,378	\$78,378
Total Labor	\$0	\$0	\$0	\$0	\$87,433	\$87,433	\$87,433
Labor OH					\$39,040	\$39,040	\$39,040
Materials		\$5,706			\$183,133	\$183,133	\$188,840
Contractors		\$17,953			\$1,157,863	\$1,157,863	\$1,175,816
Other Direct							
Charges					\$3,014	\$3,014	\$3,014
Fleet					\$20,100	\$20,100	\$20,100
Other Assessments		\$2,649		\$87,272	\$0	\$87,272	\$89,920
Deferred Expenses	\$1,490,582				(\$1,490,582)	(\$1,490,582)	\$0
	<u>\$1,490,582</u>	<u>\$26,308</u>	<u>\$0</u>	<u>\$87,272</u>	<u>\$0</u>	<u>\$87,272</u>	<u>\$1,604,162</u>



## IEEE-1366 - Detailed List of Distribution Circuits with Outages

Notification	Date	Time	Circuit	Area	Cause	Equipment	Cust Outs	Cust Mins
E735259758	11/13/2006	0:07:00	RHO-15	ECA	TO	OCO	24	22,296
E332839722	11/13/2006	0:09:00	CHA-15	ECC	TO	OCO	180	103,680
E894210803	11/13/2006	0:13:00	ORT-23	ECA	TO	OCO	133	109,326
E112943286	11/13/2006	0:13:00	ORT-23	ECA	TO	DNO	69	16,974
E063968338	11/13/2006	0:13:00	ROC-16	ECC	TO	OCO	410	301,760
E961023728	11/13/2006	0:17:00	BON-16	ECA	TO	OCO	2,312	307,496
E752655461	11/13/2006	0:21:00	YEL-25	ECC	TO	OTF	12	12,000
E974730751	11/13/2006	0:23:00	MCA-15	ECC	TO	OCO	19	14,801
10656413	11/13/2006	0:24:00	ORT-23	ECA	EF	UPC	20	22,200
E020450044	11/13/2006	0:30:00	WAB-13	EBI	TF	OCO	46	25,760
E599755659	11/13/2006	0:31:00	KAP-13	ECA	TO	OCO	7	7,616
E650739977	11/13/2006	0:34:00	OSC-23	EBI	TO	OFU	10	1,500
E551610147	11/13/2006	0:40:00	ROC-17	ECC	TO	OCO	92	89,700
E009408162	11/13/2006	0:41:00	OSC-22	EBI	TF	OCO	28	10,752
E715017284	11/13/2006	0:42:00	BON-17	ECA	TO	OFC	14	2,170
E450619090	11/13/2006	0:45:00	DGR-13	ECA	TO	OSW	15	3,585
E479008228	11/13/2006	0:46:00	CUM-15	EBI	TF	OPI	5	2,370
E943434230	11/13/2006	0:50:00	BDI-16	EBI	TO	OFU	54	17,280
E367134718	11/13/2006	0:52:00	LON-26	ECC	TO	OCO	1,315	120,980
E766436824	11/13/2006	0:53:00	BLU-17	ECC	TO	OCO	308	216,216
E140441847	11/13/2006	0:54:00	BLU-16	ECC	TO	DNO	579	81,639
E712721600	11/13/2006	0:56:00	LON-23	ECC	TO	DNO	1,476	363,624
E988909374	11/13/2006	0:59:00	YEL-26	ECC	TO	OCO	90	62,640
E824604884	11/13/2006	0:59:00	BDI-13	EBI	TO	OFU	538	131,810
E435272979	11/13/2006	1:00:00	EDG-15	ECA	EF	OFC	1,008	60,480
E247049427	11/13/2006	1:03:00	CED-13	ECA	TF	OCO	10	3,920
E354462789	11/13/2006	1:04:00	WOO-26	ECA	TF	OSV	1	716
E243480586	11/13/2006	1:05:00	HOB-16	EBI	TF	OCO	17	15,980
E972993550	11/13/2006	1:08:00	WOO-27	ECA	TO	OCO	81	57,186
E959973515	11/13/2006	1:09:00	SHD-15	EBI	TF	OCO	96	7,104
E650686563	11/13/2006	1:15:00	SPA-16	ECA	EF	OFC	928	279,328
E563067421	11/13/2006	1:15:00	ELD-23	ECC	TO	OPO	892	987,309
E679298333	11/13/2006	1:22:00	BDI-16	EBJ	TF	OTF	1	288
E560339848	11/13/2006	1:30:00	ROC-25	ECC	TO	OCO	487	76,459
E286723644	11/13/2006	1:30:00	GRI-13	ECC	TF	OCO	1,387	538,156
E659543923	11/13/2006	1:33:00	AIR-26	ECC	TO	OCO	301	122,507
E773317791	11/13/2006	1:34:00	TLN-0131	ECC	TO	OCO	3,335	1,955,212
E121835287	11/13/2006	1:36:00	MOT-14	ECC	TO	OCO	923	409,812
E301374791	11/13/2006	1:47:00	BAR-13	ECC	TF	OCO	1,017	603,081
E675989591	11/13/2006	1:50:00	ELD-26	ECC	TO	OCO	144	76,608
E049832684	11/13/2006	1:51:00	GRI-16	ECC	TO	OCO	1,642	467,970
E865272829	11/13/2006	1:51:00	ELD-27	ECC	TO	OCO	50	29,450
E240742050	11/13/2006	1:51:00	GRI-15	ECC	TF	OCO	806	199,888
E675710676	11/13/2006	2:01:00	ROC-26	ECC	TF	OPO	20	30,480
E530369809	11/13/2006	2:05:00	AIR-22	ECC	TF	OPO	1,014	299,130
E445452196	11/13/2006	2:06:00	BUC-15	ECA	TO	OFC	210	49,400

Qualifying Storm Event  
November 13, 2006

Notification	Date	Time	Circuit	Area	Cause	Equipment	Cust Outs	Cust Mins
E582630070	11/13/2006	2:06:00	FRG-25	ECC	TO	OCO	200	132,000
E393273124	11/13/2006	2:08:00	SUN-12	ECA	TO	OCO	556	51,705
E717043319	11/13/2006	2:08:00	SUN-14	ECA	EF	OFC	416	75,296
E121400937	11/13/2006	2:11:00	RAI-12	ECC	TO	OCO	30	32,670
E709869176	11/13/2006	2:12:00	SWI-17	ECC	TF	OCO	83	58,349
E492230276	11/13/2006	2:12:00	GAR-13	ECA	TO	OCO	155	113,925
E220552285	11/13/2006	2:12:00	DGR-16	ECA	TO	OFC	2	1,742
E123284523	11/13/2006	2:14:00	WOL-25	ECC	TO	OCO	10	7,210
E981367412	11/13/2006	2:14:00	ELD-25	ECC	TO	OCO	2,044	991,644
E229857079	11/13/2006	2:15:00	HAS-15	ECF	TO	OCO	200	42,200
E675159032	11/13/2006	2:16:00	NHL-17	EBD	TO	OCO	8	1,320
E637320784	11/13/2006	2:20:00	IRO-17	ECF	TO	OAR	574	106,190
E638864826	11/13/2006	2:20:00	DEC-13	ECC	TO	OCO	40	32,360
E689128473	11/13/2006	2:20:00	MOT-15	ECC	TO	OCO	170	69,700
E015778227	11/13/2006	2:22:00	KAP-16	ECA	TO	OCO	35	25,830
E212935724	11/13/2006	2:22:00	GBK-13	EAD	TF	OFU	15	1,791
E415954863	11/13/2006	2:24:00	PAT-17	ECC	TO	OPO	10	7,560
E594590686	11/13/2006	2:28:00	MST-27	EBI	TF	OCO	17	9,724
E904076457	11/13/2006	2:30:00	PLG-15	ECC	TO	OCO	982	284,780
E835456826	11/13/2006	2:41:00	FRG-26	ECC	TO	OCO	36	19,044
E833165171	11/13/2006	2:45:00	BON-16	ECA	TO	OCO	10	329
E100539368	11/13/2006	2:51:00	HEM-16	ECA	TO	OFC	200	91,800
E014930625	11/13/2006	2:54:00	OBY-16	ECC	TO	OCO	3	1,962
E010809560	11/13/2006	2:54:00	PLG-13	ECC	TF	OCO	146	122,056
E484239548	11/13/2006	2:55:00	PAT-15	ECC	TO	OCO	66	54,120
E042045790	11/13/2006	3:03:00	LON-26	ECC	TO	OCO	166	119,188
E037260681	11/13/2006	3:04:00	LUH-14	ECC	TO	OCO	1,814	449,872
E799040147	11/13/2006	3:08:00	OSC-25	EBI	TO	OTF	4	259
E275581019	11/13/2006	3:08:00	CHR-22	ECE	TO	OFU	50	7,122
E094311779	11/13/2006	3:12:00	HAW-11	ECC	TO	OCO	14	4,466
E363293606	11/13/2006	3:17:00	BLU-16	ECC	TO	OCO	60	56,700
E549907914	11/13/2006	3:24:00	BON-17	ECA	TF	OSV	1	696
E790794614	11/13/2006	3:27:00	ETN-13	EBH	TF	OCO	6	977
E283640246	11/13/2006	3:31:00	BUC-26	ECA	TF	OPO	40	19,920
E354658341	11/13/2006	3:33:00	DGR-15	ECA	TO	OCO	6	4,356
E943637211	11/13/2006	3:33:00	BON-16	ECA	TO	OCO	54	21,210
E064060997	11/13/2006	3:36:00	LAC-17	ECC	TF	OTF	1	744
E152819495	11/13/2006	3:36:00	BON-16	ECA	TO	OCO	2	960
E091475722	11/13/2006	3:40:00	MKI-17	ECC	TO	OSV	3	3,930
E814046199	11/13/2006	3:52:00	SOO-25	EBI	TF	OCO	159	64,713
E897210113	11/13/2006	3:56:00	HOB-15	EBI	TF	OCO	7	3,388
E759032079	11/13/2006	4:01:00	BON-16	ECA	TF	OCO	21	6,069
E660971590	11/13/2006	4:05:00	LON-22	ECC	TO	OTF	50	56,750
E308778681	11/13/2006	4:07:00	LEA-13	EBI	TF	OCO	345	18,987
E531592408	11/13/2006	4:14:00	ENU-17	EBI	TO	OTF	1	111
E096392418	11/13/2006	4:22:00	ROC-25	ECC	TO	OCO	20	17,360
E244667100	11/13/2006	4:23:00	OSC-23	EBI	TF	OCO	17	7,242
E296258598	11/13/2006	4:31:00	CAS-16	EBH	TO	OPO	757	404,560
E611445942	11/13/2006	4:42:00	MWV-13	EBJ	TF	OFU	16	4,128

Qualifying Storm Event  
November 13, 2006

Notification	Date	Time	Circuit	Area	Cause	Equipment	Cust Outs	Cust Mins
E162478008	11/13/2006	4:45:00	LON-23	ECC	TO	OCO	103	53,045
E813130374	11/13/2006	4:59:00	SHD-18	EBI	TF	OCO	31	14,911
E163307953	11/13/2006	5:01:00	SUM-15	EAC	TF	OCO	1	348
E895005700	11/13/2006	5:04:00	CLE-11	EBH	TO	OCO	802	240,600
E031800873	11/13/2006	5:11:00	EDG-15	ECA	TF	OCO	57	16,587
E419543260	11/13/2006	5:16:00	LWS-15	EBJ	TF	OCO	1	489
E657858533	11/13/2006	5:18:00	BAR-17	ECC	TO	OCO	1	947
E658132339	11/13/2006	5:18:00	STW-12	ECA	TF	OSV	1	132
E996202080	11/13/2006	5:22:00	WLK-13	ECA	TO	OCO	39	43,602
E975223251	11/13/2006	5:24:00	MCA-13	ECC	TO	OCO	47	19,742
E926967723	11/13/2006	5:35:00	KAP-16	ECA	TO	OCO	62	41,664
E116268790	11/13/2006	5:36:00	BDI-13	EBI	TF	OFU	9	801
E932054333	11/13/2006	5:40:00	TSB-HY	EBF	TO	OCO	794	333,480
E691423055	11/13/2006	5:48:00	LAC-15	ECC	TO	OCO	12	7,344
E011819771	11/13/2006	6:13:00	LMD-16	EBJ	TO	OTF	1	92
E258105491	11/13/2006	6:17:00	RED-23	EBD	EF	UPC	45	20,925
E551975665	11/13/2006	6:18:00	VAS-23	EBL	TF	OCO	1	414
E846869695	11/13/2006	6:18:00	WOO-27	ECA	TF	OCO	12	5,484
E603581818	11/13/2006	6:30:00	CED-17	ECA	TO	OFU	1	314
E243679303	11/13/2006	6:32:00	IRO-16	ECF	TF	OFU	5	205
E680474013	11/13/2006	6:39:00	NOR-26	EBD	EF	OTR	2	432
E352586995	11/13/2006	6:40:00	GRI-16	ECC	TO	OCO	83	62,250
E103046850	11/13/2006	6:41:00	WLS-16	EAC	TO	OFU	56	6,585
E067829957	11/13/2006	6:42:00	STW-13	ECA	TF	OSV	3	2,115
E966362971	11/13/2006	6:42:00	KCR-17	EBJ	TF	OFU	2	146
E939113166	11/13/2006	6:57:00	FRU-26	ECA	TO	OTF	3	741
E014858381	11/13/2006	7:03:00	39429	ECC	TO	OSV	9	5,373
E026266295	11/13/2006	7:06:00	LWS-15	EBI	TF	OCO	1	379
E198263896	11/13/2006	7:08:00	ENU-17	EBI	TO	OTF	8	1,216
E548547249	11/13/2006	7:11:00	LTA-18	ECA	TO	OFC	12	1,380
E074170142	11/13/2006	7:12:00	OSC-25	EBI	TO	OFU	2	416
E008232059	11/13/2006	7:14:00	LUH-14	ECC	TO	OCO	60	34,560
E082340689	11/13/2006	7:23:00	ALG-12	EAC	CR	OSV	2	354
E386323176	11/13/2006	7:24:00	SKY-23	EBD	EF	OCO	10	7,667
E248028588	11/13/2006	7:44:00	SNQ-17	EBF	TO	OSV	1	76
E986246873	11/13/2006	8:05:00	LAC-13	ECC	TO	OCO	2	578
E573101933	11/13/2006	8:16:00	LAC-16	ECC	TF	OCO	4	896
E714788370	11/13/2006	8:19:00	UHL-23	EBD	TO	OCO	1	131
E991792792	11/13/2006	8:20:00	VAS-12	EBL	EF	OTR	4	1,776
E767247540	11/13/2006	8:28:00	AIR-26	ECC	TF	OCO	134	153,028
E881281188	11/13/2006	8:38:00	BUC-16	ECA	TO	OCO	24	11,304
E740588594	11/13/2006	8:38:00	BUC-16	ECA	PO	OSV	1	387
E110431260	11/13/2006	8:40:00	SHD-17	EBI	TF	OSV	1	270
E043368564	11/13/2006	8:43:00	FWY-15	EBJ	TO	OFC	6	1,092
E399192352	11/13/2006	8:47:00	LLT-16	EBD	TO	OCO	1	297
E112253889	11/13/2006	8:50:00	KCR-17	EBJ	TF	OTF	1	95
E896296336	11/13/2006	8:52:00	GRI-15	ECC	TO	OCO	3	2,274
E979910843	11/13/2006	8:59:00	LYO-15	EBJ	TF	OCO	14	994
E208212632	11/13/2006	9:01:00	ORT-22	ECA	TO	OFC	2	1,256

Qualifying Storm Event  
November 13, 2006

Notification	Date	Time	Circuit	Area	Cause	Equipment	Cust Outs	Cust Mins
E503532381	11/13/2006	9:04:00	ROC-15	ECC	TO	OSV	3	2,778
E616265905	11/13/2006	9:07:00	BON-16	ECA	TO	OSV	1	344
E405349571	11/13/2006	9:10:00	MAN-12	ECD	TF	OSV	1	145
E771431147	11/13/2006	9:14:00	MCK-12	EAA	PO	OTF	1	84
E700486265	11/13/2006	9:16:00	MOT-14	ECC	TO	OCO	15	16,410
E087822557	11/13/2006	9:17:00	WLS-13	EAC	PO	OSV	2	196
E304957584	11/13/2006	9:22:00	VIS-22	EAA	DU	UPC	60	23,280
E033697041	11/13/2006	9:22:00	BUC-16	ECA	TO	OTF	2	616
E257902842	11/13/2006	9:22:00	MOT-15	ECC	TO	OCO	141	13,818
E322677112	11/13/2006	9:38:00	MHT-15	EBJ	TF	OSV	4	328
E841411376	11/13/2006	9:49:00	ETN-13	EBH	DU	UPC	1	769
E767962870	11/13/2006	9:55:00	BUC-16	ECA	TO	OFC	4	1,460
E467863354	11/13/2006	10:05:00	AIR-22	ECC	TF	OSW	76	41,572
E954064365	11/13/2006	10:07:00	LTA-18	ECA	AO	OCO	1	218
E679376298	11/13/2006	10:16:00	EDG-15	ECA	TO	OTF	4	476
E467500294	11/13/2006	10:20:00	VAS-13	EBL	TF	OSV	1	75
E395802515	11/13/2006	10:27:00	CWD-22	EBD	PO	USV	1	153
E226255553	11/13/2006	10:44:00	BUC-16	ECA	TO	OTF	2	622
E996394642	11/13/2006	10:53:00	WAB-13	EBI	TF	OFU	5	635
E357424019	11/13/2006	10:59:00	BRI-15	EAA	PO	USV	1	129
E324112880	11/13/2006	11:12:00	MER-16	EBE	EF	PMF	4	752
E687497645	11/13/2006	11:42:00	BAR-13	ECC	TO	OCO	232	88,160
E658781673	11/13/2006	11:44:00	PIN-26	EBD	EF	OSV	1	182
E455587530	11/13/2006	11:52:00	MOT-15	ECC	TF	OHR	169	55,094
E760975137	11/13/2006	11:59:00	OSC-22	EBI	TF	OCO	48	11,568
E138679201	11/13/2006	12:03:00	KAP-13	ECA	CP	OPO	3	1,995
E382304005	11/13/2006	12:07:00	BLA-13	EAA	DU	UPC	2	552
E916690733	11/13/2006	12:11:00	BRS-13	EAC	UN	OFC	4	480
E658961293	11/13/2006	12:14:00	PEA-15	EBJ	TO	OCR	867	155,243
E846868298	11/13/2006	12:18:00	PRI-21	ECC	TF	OPO	95	103,740
E652817113	11/13/2006	12:23:00	CHA-15	ECC	TO	OSV	4	1,708
E950874325	11/13/2006	12:37:00	ROC-16	ECC	TO	OTF	80	49,840
E884128906	11/13/2006	12:42:00	BLU-17	ECC	TO	OCO	24	4,512
E578146255	11/13/2006	13:27:00	BLU-13	ECC	TO	OPO	13	5,057
E459495422	11/13/2006	13:38:00	HAN-13	EAA	EF	OTF	1	70
E857911350	11/13/2006	13:38:00	SHD-18	EBI	TO	UTC	1	38
E857749470	11/13/2006	13:42:00	LON-23	ECC	TO	OCO	19	7,182
E888153689	11/13/2006	14:17:00	ORT-23	ECA	TO	OCO	35	17,675
E234496400	11/13/2006	14:18:00	ORT-23	ECA	TO	OPO	50	35,048
E249638159	11/13/2006	14:19:00	BON-16	ECA	TO	OFC	4	628
E571148275	11/13/2006	14:24:00	LAC-16	ECC	TF	OTF	2	192
E859065769	11/13/2006	14:36:00	WLK-15	ECA	TO	OCO	5	1,150
E192544660	11/13/2006	14:40:00	GAR-15	ECA	TO	OFC	1	10
E112189185	11/13/2006	15:02:00	LEA-15	EBI	TO	OTF	2	156
10657350	11/13/2006	15:15:00	SKY-23	EBE	EF	OPO	2	854
E249948332	11/13/2006	15:21:00	LON-26	ECC	TF	OTF	8	3,400
E457402927	11/13/2006	15:22:00	LTA-18	ECA	TO	OCO	8	1,192
E895500632	11/13/2006	15:30:00	GAR-15	ECA	TO	OSV	1	14
10656508	11/13/2006	15:43:00	FAC-13	EBE	EF	USV	1	470

Qualifying Storm Event  
November 13, 2006

Notification	Date	Time	Circuit	Area	Cause	Equipment	Cust Outs	Cust Mins
E599459032	11/13/2006	15:44:00	GAR-15	ECA	PO	OSV	1	141
E700294445	11/13/2006	15:50:00	HAZ-13	EBE	EF	UTR	20	13,507
E218089723	11/13/2006	15:57:00	MAP-16	EBE	DU	UPC	25	10,450
E108655826	11/13/2006	15:58:00	ZEN-23	EBJ	TF	OFU	94	7,238
E544138777	11/13/2006	16:18:00	KAP-16	ECA	TO	OCO	10	1,600
E211377229	11/13/2006	16:18:00	WOB-23	EAA	EF	UPC	15	2,576
E714880584	11/13/2006	16:23:00	SHD-17	EBI	TF	OSV	1	290
E609902635	11/13/2006	16:35:00	BON-17	ECA	TF	OSV	1	80
E821826858	11/13/2006	16:41:00	RDO-15	EBJ	TO	OTF	5	270
E778595214	11/13/2006	16:44:00	SHD-18	EBI	EF	OCO	58	17,211
E158065098	11/13/2006	16:51:00	BLU-17	ECC	TO	OCO	3	1,107
E556834153	11/13/2006	17:16:00	OSC-23	EBI	TO	OTF	1	153
E428676668	11/13/2006	17:29:00	LMD-16	EBJ	EF	USV	1	177
E510654193	11/13/2006	17:39:00	STA-13	EBK	EF	USV	1	82
E300865383	11/13/2006	17:47:00	NOR-26	EBD	EF	OTF	12	2,148
E854418270	11/13/2006	17:55:00	MOT-15	ECC	TF	OTF	14	1,288
E789863784	11/13/2006	18:26:00	ELD-25	ECC	TO	OCO	3	1,407
E883644137	11/13/2006	18:28:00	STW-13	ECA	TF	OSV	1	190
E943421923	11/13/2006	18:31:00	GRI-13	ECC	TF	OCO	4	1,672
E579446297	11/13/2006	18:38:00	GRV-15	ECA	TO	DNO	17	2,924
E262158677	11/13/2006	19:08:00	DGR-13	ECA	TO	OCO	1	147
E457090598	11/13/2006	19:17:00	AIR-22	ECC	TO	DNO	34	1,156
10656509	11/13/2006	19:35:00	ROS-13	EBE	EF	USV	1	145
E904376356	11/13/2006	19:56:00	PMA-16	ECE	TO	OFU	53	1,537
E333631393	11/13/2006	20:22:00	GRI-16	ECC	TF	OCO	5	1,515
E062672683	11/13/2006	20:42:00	BIG-12	EAC	EF	OTF	2	159
E871298410	11/13/2006	20:44:00	RAI-12	ECC	TF	OCO	3	717
E368831970	11/13/2006	20:44:00	BLU-13	ECC	TF	OTR	5	1,655
E347499765	11/13/2006	20:59:00	PHA-16	EBE	EF	UFJ	96	45,312
E047259260	11/13/2006	21:17:00	PIN-26	EBF	EF	UFJ	5	1,312
E747546114	11/13/2006	21:37:00	NUG-26	EAA	EF	OIN	84	8,172
E096334014	11/13/2006	21:54:00	SHD-18	EBI	EO	OTF	2	303
E470022779	11/13/2006	22:48:00	WOL-23	ECC	EF	USV	1	852
E225677110	11/13/2006	23:14:00	ROC-16	ECC	TF	OTF	5	640

### Terms, Codes and Definitions Used on Detail Reports

<b>Notification</b>	<b>[Notification Number]</b> A number assigned by SAP, identifying the outage record
<b>Date</b>	The date of the outage
<b>Time</b>	The time of the outage
<b>Circuit</b>	<b>[Reference Circuit]</b> The circuit identifier for the affected circuit
<b>F/LOC</b>	<b>[Functional Location]</b> The grid number where the outage occurred. If the grid number is not available, the Reference Circuit identifier occupies this field
<b>EQT NBR</b>	<b>[Equipment Number]</b> A number used to tie the equipment involved in the outage to the related information in SAP. This number does not represent the physical number of the equipment

<b>Area</b>	<b>[Maintenance Planner Group]</b> A code representing the energy, region and service center	
	EAA – Bellingham	EBJ – South King
	EAB – Lynden	EBK – Southwest King
	EAC – Skagit	EBL – Vashon
	EAD – Whidbey	ECA – Puyallup
	EBD – Redmond	ECC – Olympia
	EBE – Factoria	ECD – Port Orchard
	EBF – Snoqualmie	ECE – Poulsbo
	EBI – Enumclaw	ECF – Port Townsend

<b>Cause</b>	Cause of Outage	
	AO – Accident Other	EF – Equipment Failure
	BA – Bird or Animal	EO – Electrical Overload
	CP – Car Pole	FI – Faulty Installation
	CR – Customer Request	TF – Tree Off Right-of-Way
	DU – Dig-up Underground	TO – Tree On Right-of-Way
	SO – Scheduled Outage	UN – Unknown

<b>Equipment</b>	Affected by, or involved in the outage	
	OCN – Connector	OSW – Overhead Switch
	OCO – Overhead Conductor	OTF – Overhead Transformer Fuse
	OCR – Crossarm	OTR – Overhead Transformer
	OFC – Overhead Cut-out	OUP – OH to UG Primary
	OFS – Overhead Fire Signal	OUS – OH to UG Secondary Service
	OFU – Fuse Link/OH Line Fuse	SBF – High-side Bank Fuse
	OGS – Span Guy	SCB – Power Circuit Breaker
	OHR – Overhead Recloser	UOT – Underground Outdoor Term
	OIN – Insulator	UPC – Underground Primary Cable
	OJU- Jump Wire	UPT – Padmount Transformer
	OPI – Overhead Pin Insulator	USV – Underground Service
	OPO – Pole	UTC – Underground Terminal Fuse
	OSV – Overhead Service	UTR – Submersible Transformer
	ORE – Regulator	

### Codes, Definitions – Continued

<b>CUST OUT</b>	<b>[Customer Out]</b> The number of customers without power for any given outage record
<b>CUST MIN</b>	<b>[Customer Minutes]</b> The total number of minutes customers were without power for any given record
<b>CODE</b>	<b>[Storm Code]</b> An event descriptor
	NON – Non Storm / Normal Conditions
	WTH – Weather Related (eg: wind storm, showers, etc)
	MAJ – Major event

## Newsprint Media Coverage



November 14, 2006

### High winds snap limbs, topple trees, cut power

Jeremy Pawloski, The Olympian

Trees and branches downed by wind gusts Sunday night and Monday morning caused up to 200 power outages in Thurston County, including one that led to canceling classes at The Evergreen State College for the first time since 2004.

The Thurston County area was the hardest hit by outages Monday among Puget Sound Energy's coverage area, said Puget Sound Energy spokeswoman Dorothy Bracken.

The 200 or so outages in the Thurston County area were tough to deal with and labor intensive because of the number of small outages, she added.

"The power was out for about 13 hours," said Evergreen spokesman Anthony Sermonti during an on-campus interview Monday afternoon about 2:30. "It just came back on. There was significant damage to the power lines around campus."

Another outage darkened an estimated 1,000 homes in the Littlerock Road area, when a falling tree struck a power line parallel to the road at 1:42 a.m. Monday, Bracken said. The area was between 103rd and 110th avenues, said Thurston County Sheriff's Sgt. Alvin Griffin. Littlerock Road was closed for part of the day Monday.

Power would not be restored to the last 50 or so customers in the Littlerock Road area until this morning, Bracken said Monday night. The outage in the Littlerock Road area was taking a long time to fix because a tree severed three separate rows of lines, which is uncommon and difficult to repair, Bracken said.

New outages caused by falling trees continued during the day Monday, with a power line reportedly down late Monday afternoon at 101st Avenue and Delphi Road Southwest, Griffin said.

"It's very long tedious work, going from one small outage to the next small outage," Bracken said. "Ever since the power outages occurred, they've been working to get the power restored."

Wind gusts at Olympia Airport were measured at 33 miles per hour near midnight Sunday, Dennis D'Amico, a spokesman for the National Weather Service in Seattle, said. However a gust of 63 miles per hour was reported Sunday night by a weather spotter who lives near Lake Lawrence, he said.

#### **What's next**

Western Washington is supposed to get a brief break from rains today, but by Wednesday a "decent-sized storm" bringing more wind and rains will move through the area quickly, D'Amico said. Wednesday's rains will bring rains to higher elevations in the mountains, and the potential for minor flooding, D'Amico said. No flood warnings or flood watches had been issued as of Monday night, but D'Amico said officials would be watching the river levels closely.



## High winds snap limbs, topple trees, cut power - continued

"It's a decent-sized storm, but it's going to be a quick mover," D'Amico said of the storm expected to hit on Wednesday.

A full day of classes at Evergreen had not been canceled since heavy snows hit Olympia in 2004, Sermonti said. Classes at Evergreen will resume with their normal schedules today, he added.

After power was restored to Evergreen, one off-campus apartment complex near the college, Cooper's Glen Apartments on Overhulse Road, remained without power Monday afternoon. A resident of the apartments, Zach Schutz, said that so far, he was not too bothered by the inconvenience, but wished he could turn on his heat.

"It's just kind of cold right now," Schutz said. "We just want to get it back soon so our milk doesn't go bad."

Another prolonged outage in Thurston County caused by falling trees and tree limbs was reported in the area of Bald Hills Road and Smith Prairie Road in Yelm, Bracken said. Power was restored there Monday night, Bracken said.

The Department of Transportation reported having to move downed power lines that were blocking state Route 507 in both directions near the border of Thurston and Lewis counties in Bucoda on Monday morning. The lines were removed and the road was reopened shortly after 11 a.m. Monday, according to a DOT news release.

Power outages weren't the only problems caused by the high winds Sunday and Monday.

A couple who lives in Seashore Villa in Olympia reported that a strong gust of wind early Monday morning blew the metal roof off of their back deck.

"I never heard such a noise in my life," said Jeannette Ward, who said it sounded like "a freight train coming through."

Law enforcement reported the usual increase in fender benders and minor crashes as heavier rains hit during rush hour Monday.

DOT also reported that U.S. Highway 101 north of Shelton, closed since Nov. 6 by a mudslide caused by heavy rains, will not reopen until Wednesday at the earliest. The slopes surrounding the slide were too unstable during the weekend to complete the work clearing the debris, according to DOT. The work is scheduled to be completed today and the road to reopen on Wednesday, but Monday night, a DOT spokesman said those dates are not fixed in stone.

### **Safety tips**

Puget Sound Energy offers the following safety tips for how to deal with power outages.

#### **Before a storm**

- Assemble an emergency kit. It should include a battery-powered radio, a flashlight, extra batteries, a first-aid kit, a fire extinguisher and bottled water and non-perishable food.
- Make sure your blanket supply is adequate for extended outages. In an emergency, blankets and cardboard can be hung over windows and doorways to minimize heat loss.

High winds snap limbs, topple trees, cut power – continued

**During an outage**

- Report outages or downed power lines by calling Puget Sound Energy at 1-888-225-5773. The automated outage reporting system allows for direct input of outage information and helps speed restoration.
- Keep refrigerators and freezers shut, opening them only when absolutely necessary.
- Open faucets slightly so they drip to prevent pipes from freezing.
- Disconnect house circuits from Puget Sound Energy power lines if you are using a portable generator during an outage. Pull or switch to "off" all main fuses or circuit breakers to protect power line crews working to restore service.