



2006  
Qualifying Storm Events

March 8, 2006

## Table of Contents

<b>Table of Contents .....</b>	<b>2</b>
<b>Event Description .....</b>	<b>3</b>
<b>Date of event .....</b>	<b>3</b>
<b>Event Type.....</b>	<b>3</b>
<b>Service Areas Affected .....</b>	<b>3</b>
<b>Number of Customers Affected.....</b>	<b>3</b>
<b>Summary of System Impacts .....</b>	<b>3</b>
<b>Mobilization Summary .....</b>	<b>3</b>
<b>Major Event Day – Qualification.....</b>	<b>5</b>
<b>Qualified Events - 2006 .....</b>	<b>5</b>
<b>Current Event – Calculation Detail .....</b>	<b>5</b>
<b>Cumulative list of events that have qualified .....</b>	<b>5</b>
<b>Event Restoration – Cost Summary .....</b>	<b>6</b>
<b>Restoration Cost Detail by Qualifying Event.....</b>	<b>6</b>
<b>YTD Storm Restoration Cost Detail – Through March 8, 2006.....</b>	<b>6</b>
<b>Detail Documents .....</b>	<b>7</b>
<b>Restoration Cost Detail – Current Event .....</b>	<b>8</b>
<b>IEEE-1366 - Detailed List of Distribution Circuits with Outages.....</b>	<b>9</b>
<b>Terms, Codes and Definitions Used on Detail Reports.....</b>	<b>13</b>
<b>Newsprint Media Coverage .....</b>	<b>14</b>

## Event Description

### Date of event

March 8, 2006

### Event Type

Wind storm.

### Service Areas Affected

Breezy conditions persisted throughout Puget Sound Energy's (PSE) service area for much of the day on March 8<sup>th</sup>. Prior to 4 p.m., PSE had already restored nearly 60 outages when 50 mph winds struck north King County, resulting in a rapid increase in new outages. Kitsap county residents were also impacted by this wind event, however to a much lesser degree. Overall, damage to PSE's distribution system was fairly light and restoration progressed quickly.

### Number of Customers Affected

Approximately 20,000 customers were restored over the course of this wind event.

### Summary of System Impacts

<b>Total Number of Outages</b>	<b>164</b>
Distribution Circuits Totally Out	15
Distribution Circuits Partially Out	149

Transmission Circuits Affected	1
Substations Totally Off-line	1

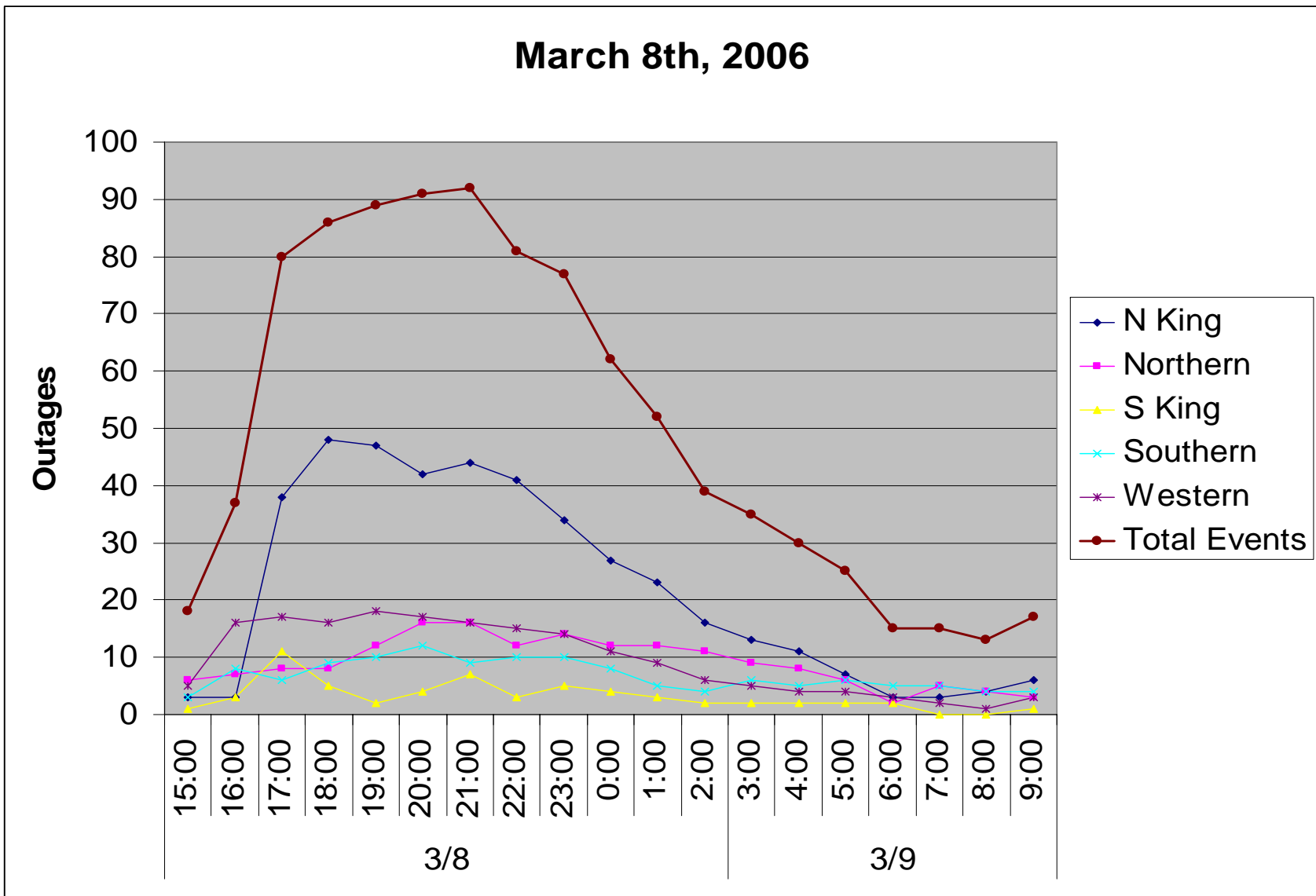
### Mobilization Summary

#### Operating bases

Base	Date Opened	Time Opened	Date Closed	Time Closed
Kitsap	3/8/2006	15:45	3/9/2006	02:30
N King	3/8/2006	16:30	3/9/2006	04:45

#### Emergency Operations Center

EOC	Date Opened	Time Opened	Date Closed	Time Closed
	3/8/2006	18:00	3/9/2006	02:30



## Major Event Day – Qualification

### IEEE 1366 Method

IEEE 1366 was established to present a set of terms and definitions which can be used to foster uniformity in the development of distribution service reliability indices, to identify factors which affect the indices, and to aid in consistent reporting practices among utilities. Also, it provides guidance for new personnel in the reliability area, and tools for internal as well as external comparisons. The Major Event Day definition was created as part of IEEE 1366 to allow for consistent calculation of reliability metrics between utilities, and enable more valid comparisons with other utility reliability metrics.

#### IEEE Major Event Day Calculation (2.5 BETA METHOD)

1. A threshold on daily SAIDI is computed once a year, following year end.
2. Assemble the 5 most recent years of historical values of SAIDI/day.
3. Discard any days in the data set that has a SAIDI/day of zero.
4. Find the natural logarithm of each value in the data set.
5. Compute the average Alpha and the standard deviation (Beta) of the natural logarithms computed in step 3.
6. Compute the threshold Tmed where  $Tmed = \exp(\text{Alpha} + 2.5 * \text{Beta})$
7. Any day in the next year with SAIDI > Tmed is a major event day.

**Puget Sound Energy's Major Event Threshold for 2006: 4.97 Minutes**

## Qualified Events - 2006

### Current Event – Calculation Detail

Event Date	Total Customer Minutes	Average Customer Count	Daily SAIDI – Customer Minutes /Customer Count
3/8/2006	6,336,044	1,029,159	6.16

### Cumulative list of events that have qualified

Date(s)	T-med Score	O&M – Deferrable Accumulation
1/1/2006	5.35	\$242,708
1/31/2006	11.19	\$653,176
2/4/2006	161.65	\$6,104,116
2/10/2006	8.34	\$0
2/17/2006	40.13	\$0
3/8/2006	6.16	\$0

## Event Restoration – Cost Summary

### Restoration Cost Detail by Qualifying Event

Date	Qualified Events Deferred Account	Capital	C&D Costs Recoverable from Direct Billings (Costs Not Yet Billed)	O&M – Not Deferrable	O&M – Deferrable Accumulation	Total O&M	Total
1/1/2006	\$0	\$0	\$0	\$23,995	\$242,708	\$266,703	\$266,703
1/31/2006	\$0	\$70,613	\$0	\$35,780	\$653,176	\$688,956	\$759,569
2/4/2006	\$2,853,981	\$311,579	\$0	\$395,638	\$6,104,116	\$6,499,754	\$9,665,314
2/10/2006	\$468,301	\$110,144	\$0	\$17,139	\$0	\$17,139	\$595,584
2/17/2006	\$3,309,247	\$141,574	\$0	\$127,653	\$0	\$127,653	\$3,578,474
3/8/2006	\$444,758	\$3,929	\$0	\$34,731	\$0	\$34,731	\$483,418

### YTD Storm Restoration Cost Detail – Through March 8, 2006

Qualified Events Deferred Account	Capital	C&D Costs Recoverable from Direct Billings (Costs Not Yet Billed)	O&M – Not Deferrable	O&M Deferrable Accumulation	Total O&M	Total
\$7,076,287	\$637,839	\$0	\$634,936	\$7,000,000	\$7,634,936	\$15,349,062

Qualifying Storm Event  
March 8, 2006

## Detail Documents

**Restoration Cost Detail – Current Event**

**Detailed List of Distribution Circuits with Outages**

**Terms, Codes & Definitions Used on Detail Reports**

**Newsprint Media Coverage**

**Restoration Cost Detail – Current Event**

<b>Puget Sound Energy                  March 8, 2006 Storm Damage Repair Costs</b>							
	Qualifying Events Deferred Account	Capital	C&D Recoverable from Direct Billings (Costs Not Yet Billed)	O&M - Not Deferrable	O&M - Deferrable Accumulation	Total O&M	Total
Labor							
ST					\$3,570	\$3,570	\$3,570
OT		\$0			\$57,141	\$57,141	\$57,141
Total Labor	\$0	\$0	\$0	\$0	\$60,711	\$60,711	\$60,711
Labor OH					\$26,702	\$26,702	\$26,702
Materials		\$475			\$28,041	\$28,041	\$28,516
Contractors		\$2,884			\$308,882	\$308,882	\$311,766
Other Direct							
Charges					\$4,113	\$4,113	\$4,113
Fleet					\$16,309	\$16,309	\$16,309
Other Assessments		\$570		\$34,731	\$0	\$34,731	\$35,301
Deferred Expenses	\$444,758				(\$444,758)	(\$444,758)	\$0
	\$444,758	\$3,929	\$0	\$34,731	\$0	\$34,731	\$483,418



### IEEE-1366 - Detailed List of Distribution Circuits with Outages

Notification	Date	Time	Circuit	Area	Cause	Equipment	Cust Outs	Cust Mins
E690297006	3/8/2006	3:40:00	CHR-22	ECE	TO	OCO	10	2,530
E766873219	3/8/2006	3:55:00	SAH-17	EBD	EF	UPC	2	1,096
E469079278	3/8/2006	6:55:00	LAT-13	EBJ	EF	OTF	2	110
E793520682	3/8/2006	8:00:00	ING-13	EBD	SO	UPC	38	10,830
E243631829	3/8/2006	9:09:00	IRO-13	ECF	SO	UPC	6	816
E499223519	3/8/2006	9:15:00	BUC-16	ECA	EF	PTF	1	55
E256692434	3/8/2006	9:31:00	FAC-13	EBE	TO	OTF	1	31
E359600134	3/8/2006	9:36:00	SWE-25	EBJ	EF	OTR	10	5,360
E460151761	3/8/2006	9:40:00	DES-16	EBJ	EF	OTF	3	210
E352613996	3/8/2006	9:50:00	CHI-12	ECD	TO	OCO	4	532
E556550854	3/8/2006	10:03:00	SLA-17	EAA	EF	OTF	2	84
E333458945	3/8/2006	11:03:00	MIR-15	EBF	EF	OJU	3	756
E479225822	3/8/2006	11:27:00	IRO-13	ECF	TO	OCO	200	7,000
E243253732	3/8/2006	11:35:00	PTR-14	EAA	UN	OFU	55	7,425
E519291233	3/8/2006	11:40:00	CHR-22	ECE	EF	OTR	7	1,148
E353935844	3/8/2006	11:47:00	MUR-15	ECE	SO	OCR	3	234
10622590	3/8/2006	12:10:00	DUT-16	ECA	DU	UPC	1	346
E469084368	3/8/2006	12:31:00	CLV-16	EAD	EF	OFU	26	1,014
E568586807	3/8/2006	12:38:00	HAZ-16	EBE	EF	OTF	2	94
E267676579	3/8/2006	13:17:00	EPO-12	ECD	TO	OCO	43	14,276
E505883801	3/8/2006	13:22:00	CPV-15	EAD	TF	OCO	25	7,200
E858557936	3/8/2006	13:31:00	SKE-23	ECE	TO	OCO	59	10,915
E237630840	3/8/2006	13:34:00	SKE-26	ECE	TO	OCO	706	280,788
E340811825	3/8/2006	13:36:00	PET-13	EAC	TF	OFU	125	6,808
E101776235	3/8/2006	13:45:00	NLM-15	EAC	TF	OFU	2	81
E458982136	3/8/2006	14:05:00	HKX-16	EAC	TO	OCO	619	160,940
10622391	3/8/2006	14:06:00	CPV-15	EAD	EF	OSV	1	24
E759802005	3/8/2006	14:09:00	PIN-23	EBF	TF	OFU	36	2,160
E145320658	3/8/2006	14:28:00	PMA-12	ECE	TO	OCO	63	48,006
E987827132	3/8/2006	14:30:00	BLA-13	EAA	EF	OCO	51	16,830
E591947499	3/8/2006	14:42:00	GAG-11	EAC	AO	OCO	11	748
E899563550	3/8/2006	14:44:00	SUM-13	EAC	EF	OCO	1,519	1,519
E917149857	3/8/2006	14:47:00	SWI-15	ECC	EF	OCO	8	1,920
E942703903	3/8/2006	14:48:00	TAN-16	ECC	EF	OFU	7	322
E410821391	3/8/2006	14:59:00	HAP-15	EAA	EF	OCN	1	31
E311044937	3/8/2006	15:08:00	ELD-25	ECC	TO	OCO	6	1,098
E235629746	3/8/2006	15:08:00	SIL-13	ECF	TO	OCO	8	1,376
E098131053	3/8/2006	15:20:00	FRA-12	ECD	TO	OCO	133	51,072
E050440972	3/8/2006	15:21:00	LON-26	ECC	EF	OCO	6	2,172
E638924412	3/8/2006	15:21:00	LON-22	ECC	TF	OCO	15	1,410
E048482736	3/8/2006	15:22:00	QUI-26	ECF	TO	OCO	8	2,056
E225877548	3/8/2006	15:26:00	FRA-13	ECD	TO	OCO	163	76,284
E693523527	3/8/2006	15:26:00	PGA-13	ECE	TO	OFU	8	1,552
E599260040	3/8/2006	15:27:00	RHO-15	ECA	TF	OCO	702	40,716
E171836231	3/8/2006	15:27:00	TRA-22	ECE	TO	OCO	1,550	426,850
E155334856	3/8/2006	15:28:00	CHI-12	ECD	TO	OPO	95	85,595
E878536772	3/8/2006	15:30:00	BHL-16	ECE	TO	OFU	12	2,820
E773578858	3/8/2006	15:37:00	BUC-16	ECA	TF	OCO	108	7,236
E720298561	3/8/2006	15:38:00	VIS-26	EAA	EF	OJU	1	172
E509826691	3/8/2006	15:40:00	OSC-22	EBI	TO	OCO	10	3,395
10622617	3/8/2006	15:40:00	VAS-13	EBL	TO	OCO	100	11,400

Qualifying Storm Event  
March 8, 2006

Notification	Date	Time	Circuit	Area	Cause	Equipment	Cust Outs	Cust Mins
10622615	3/8/2006	15:41:00	VAS-13	EBL	TO	OCO	150	19,500
E732430866	3/8/2006	15:45:00	QUI-25	ECF	EF	OTF	5	475
E149324068	3/8/2006	15:47:00	NNO-15	EBJ	TO	OCR	1,505	144,480
E995993205	3/8/2006	15:48:00	BON-17	ECA	EF	OCO	4	1,248
E873613188	3/8/2006	15:55:00	VAS-13	EBL	TO	OCO	14	13,253
E790937837	3/8/2006	15:56:00	HAN-15	EAA	UN	OTH	720	51,120
E789209948	3/8/2006	15:57:00	COT-13	EBD	TO	OCO	69	57,960
E026371406	3/8/2006	15:57:00	COT-13	EBD	TF	OCO	1,341	536,260
E146287270	3/8/2006	15:57:00	VAS-22	EBL	TO	OFU	4	1,848
E133924855	3/8/2006	15:58:00	SNQ-13	EBF	TF	OCR	31	17,577
E543486736	3/8/2006	16:00:00	CLY-26	EBE	TF	OFU	44	22,660
E045517459	3/8/2006	16:07:00	MIR-13	EBF	TO	OCO	2,379	17,647
E018662120	3/8/2006	16:08:00	COT-15	EBD	TF	OCO	1,186	141,134
E003259079	3/8/2006	16:15:00	DUV-13	EBD	TF	OFC	55	5,775
E268574026	3/8/2006	16:16:00	HAZ-15	EBE	TF	OCO	6	4,674
E526943003	3/8/2006	16:17:00	EGT-25	EBF	TF	OCO	45	31,815
E676426971	3/8/2006	16:17:00	ING-15	EBD	TO	OCO	2,482	203,524
E883693614	3/8/2006	16:18:00	ORT-22	ECA	TF	OCO	1,867	119,488
E714880508	3/8/2006	16:20:00	WLS-16	EAC	EF	OTF	1	23
E907561282	3/8/2006	16:21:00	LOL-21	ECD	TO	OFU	14	1,176
E698499038	3/8/2006	16:21:00	LLT-16	EBD	TF	OFU	9	2,898
E292983134	3/8/2006	16:21:00	MIR-17	EBF	TO	OCO	45	4,455
E064796632	3/8/2006	16:22:00	MIR-15	EBF	EF	OFC	4	756
E561411898	3/8/2006	16:23:00	HWD-25	EBD	TF	OCO	2	1,424
E400567391	3/8/2006	16:31:00	SBE-26	EBE	TF	OFU	39	16,497
E903976401	3/8/2006	16:34:00	SOM-16	EBE	TO	OCO	239	137,425
E844988697	3/8/2006	16:41:00	KWH-25	EBE	TF	OFC	378	205,632
E964309126	3/8/2006	16:42:00	ROS-21	EBD	TF	OSV	6	2,046
E638750840	3/8/2006	16:44:00	SOO-25	EBI	TF	OHR	1,169	106,379
E895908836	3/8/2006	16:44:00	DUV-12	EBD	TF	OFU	3	576
E441600100	3/8/2006	16:47:00	NOR-25	EBD	TF	OCO	752	318,096
E643815052	3/8/2006	16:52:00	RPT-26	ECD	TO	OCO	104	40,560
E606532627	3/8/2006	16:52:00	HWD-22	EBD	TF	OCO	11	4,543
E700394609	3/8/2006	16:57:00	BTR-22	EBD	TF	UOT	643	160,153
E551925259	3/8/2006	16:57:00	PIN-26	EBF	TO	OCO	38	13,794
E743402980	3/8/2006	16:58:00	CWD-24	EBD	TF	OCO	1	532
E384623152	3/8/2006	17:02:00	KLA-17	EBF	TO	OCO	2,551	295,916
E634634549	3/8/2006	17:02:00	KLA-18	EBF	EF	OFC	5	1,640
E502570197	3/8/2006	17:04:00	UHL-23	EBD	TO	OCO	7	2,702
10622382	3/8/2006	17:05:00	ELD-25	ECC	TF	OCO	10	2,030
E169682545	3/8/2006	17:06:00	CED-15	ECA	EF	UPC	25	4,025
10626870	3/8/2006	17:23:00	COT-13	EBD	TF	OCO	592	54,464
E603446607	3/8/2006	17:24:00	ORT-22	ECA	TF	OCO	1,653	223,328
E710921850	3/8/2006	17:28:00	PET-16	EAC	EF	OPO	179	109,548
E236431195	3/8/2006	17:31:00	LOL-21	ECD	TO	OCO	10	440
E935227220	3/8/2006	17:31:00	EGT-27	EBE	TF	OFU	36	13,212
E507215370	3/8/2006	17:37:00	BRE-33	ECD	TO	OGD	1	488
E437916306	3/8/2006	17:38:00	CRE-12	EAD	TO	OCO	1,043	68,838
E901638502	3/8/2006	17:38:00	KCR-17	EBJ	TO	UTC	1	68
10626388	3/8/2006	17:38:00	CRE-13	EAD	TO	OCO	670	28,140
E162395791	3/8/2006	17:43:00	HAZ-16	EBE	TF	OCO	2	1,408
E438934056	3/8/2006	17:48:00	CLE-11	EBH	UN	OCO	299	89,102
E357033340	3/8/2006	17:50:00	FRG-25	ECC	TO	OCO	25	11,325
E909079687	3/8/2006	17:53:00	BRW-13	EAC	TO	OCO	9	2,196
E437720160	3/8/2006	17:55:00	BLU-17	ECC	TO	OCO	185	75,480
E873844598	3/8/2006	17:56:00	AIR-22	ECC	TF	OCO	1	158

Qualifying Storm Event  
March 8, 2006

Notification	Date	Time	Circuit	Area	Cause	Equipment	Cust Outs	Cust Mins
E443548259	3/8/2006	17:56:00	SUM-12	EAC	TO	OCO	7	4,228
E267683576	3/8/2006	18:08:00	GLA-12	EAA	TF	OCO	969	186,048
E534604433	3/8/2006	18:11:00	TOL-15	EBD	TO	OCO	1	635
E911589097	3/8/2006	18:12:00	LON-22	ECC	TO	OCO	403	154,349
E819221809	3/8/2006	18:12:00	DES-15	EBJ	TF	OCO	35	11,130
E029755074	3/8/2006	18:14:00	RAI-12	ECC	CP	OPO	146	116,216
10622532	3/8/2006	18:14:00	RAI-12	ECC	TF	OCO	1,600	240,000
E210769321	3/8/2006	18:17:00	ROC-16	ECC	EF	OCO	1	557
E812693691	3/8/2006	18:19:00	SLA-15	EAA	EF	OTR	1	306
E882766719	3/8/2006	18:21:00	BRW-16	EAC	EF	UFJ	92	45,448
E842290599	3/8/2006	18:22:00	KEA-15	ECF	TO	OFU	41	4,305
E214258421	3/8/2006	18:27:00	CHI-13	ECD	TO	OCO	134	55,342
E133559329	3/8/2006	18:30:00	LYN-24	EAA	EF	OFC	12	1,920
E512548839	3/8/2006	18:32:00	HKX-16	EAC	EF	OSV	2	236
E180724842	3/8/2006	18:35:00	PMA-15	ECE	TO	OTF	3	288
E312922181	3/8/2006	18:46:00	OBY-17	ECC	TF	OCO	59	6,844
10622557	3/8/2006	18:49:00	IRO-13	ECF	TO	OCO	90	57,240
E744532067	3/8/2006	18:52:00	WLS-16	EAC	EF	OPO	22	10,076
E187328241	3/8/2006	18:57:00	FNW-16	ECD	TF	OSV	1	85
E265949603	3/8/2006	18:58:00	SWA-12	EAD	TF	OFU	1	32
E531164111	3/8/2006	18:58:00	FAB-15	EAD	TF	OFU	81	14,013
E940289973	3/8/2006	19:01:00	ZEN-24	EBJ	TF	OCO	1,045	62,334
E880798520	3/8/2006	19:13:00	KEN-12	EAA	EF	OSV	3	651
E670703941	3/8/2006	19:13:00	GBK-13	EAD	TO	OCO	1,112	85,624
E107087092	3/8/2006	19:14:00	MER-13	EBE	TF	OFU	20	3,640
E768426338	3/8/2006	19:20:00	ORT-22	ECA	TF	OCO	7	959
E471304727	3/8/2006	19:24:00	GBK-15	EAD	TO	OCO	1,174	50,482
10622616	3/8/2006	19:25:00	VAS-13	EBL	TO	OCO	1,800	181,800
E781553740	3/8/2006	19:31:00	ELD-25	ECC	TF	OCO	10	1,740
E220032858	3/8/2006	19:39:00	LON-23	ECC	EF	UPC	6	6,633
E746352439	3/8/2006	19:41:00	SUM-15	EAC	EF	OCO	48	25,872
E814952404	3/8/2006	19:42:00	FLD-12	EAD	TF	OFU	30	4,140
E064881723	3/8/2006	19:53:00	CAS-16	EBH	TF	OCO	75	25,675
E894228231	3/8/2006	20:00:00	CLV-16	EAD	EF	OCO	15	3,045
10622558	3/8/2006	20:15:00	VAS-23	EBL	TO	OCO	151	36,240
E100768366	3/8/2006	20:17:00	RPT-23	ECD	TO	OCO	27	3,726
E627165370	3/8/2006	20:23:00	DUV-13	EBD	EF	OJU	2	622
E725704539	3/8/2006	20:28:00	CUM-13	EBI	TF	OFU	200	13,160
E717385424	3/8/2006	20:33:00	CUM-13	EBJ	EF	USC	1	138
E967799331	3/8/2006	20:37:00	KNT-36	EBJ	TF	OCO	15	8,494
E925537602	3/8/2006	20:39:00	CRE-15	EAD	TO	OFU	16	4,480
E934323810	3/8/2006	20:57:00	BRS-13	EAC	EF	OCO	23	11,224
E984202316	3/8/2006	21:10:00	PMA-12	ECE	TO	OFC	19	18,145
E009159267	3/8/2006	21:31:00	FRG-26	ECC	TF	OCO	1,335	84,105
E036146811	3/8/2006	21:43:00	TAN-13	ECC	TF	OCO	58	6,496
E037100970	3/8/2006	21:47:00	SKY-23	EBD	TF	OFU	31	5,084
E741207452	3/8/2006	21:57:00	PAT-17	ECC	TF	OCO	21	1,722
10622618	3/8/2006	22:00:00	IRO-13	ECF	TO	OFU	12	876
E215753039	3/8/2006	22:01:00	BRW-13	EAC	TF	OFU	61	3,904
E155876150	3/8/2006	22:03:00	FRA-12	ECD	TO	OFU	80	5,360
E633080853	3/8/2006	22:04:00	PAT-15	ECC	TF	OSV	1	131
E601207065	3/8/2006	22:16:00	LEA-13	EBI	EF	USV	1	115
E834800249	3/8/2006	22:24:00	BIG-15	EAC	EF	OCO	3	1,203
E126829449	3/8/2006	22:28:00	LGY-16	EAD	TF	OCO	5	1,435
E092358711	3/8/2006	22:30:00	NOP-26	EBJ	EF	USV	1	58
E439042712	3/8/2006	22:45:00	SPA-16	ECA	TF	OCO	10	4,040

Qualifying Storm Event  
March 8, 2006

Notification	Date	Time	Circuit	Area	Cause	Equipment	Cust Outs	Cust Mins
E668051926	3/8/2006	22:59:00	SWE-23	EBJ	TF	OCO	10	1,537
E649365176	3/8/2006	23:10:00	CPV-13	EAD	TO	OCO	535	57,711
E021042787	3/8/2006	23:19:00	CLE-11	EBH	TO	OCO	9	4,734
E210296502	3/8/2006	23:21:00	CHR-25	ECE	CP	OSL	1	57

### Terms, Codes and Definitions Used on Detail Reports

<b>Notification</b>	<b>[Notification Number]</b> A number assigned by SAP, identifying the outage record
<b>Date</b>	The date of the outage
<b>Time</b>	The time of the outage
<b>Circuit</b>	<b>[Reference Circuit]</b> The circuit identifier for the affected circuit
<b>F/LOC</b>	<b>[Functional Location]</b> The grid number where the outage occurred. If the grid number is not available, the Reference Circuit identifier occupies this field
<b>EQT NBR</b>	<b>[Equipment Number]</b> A number used to tie the equipment involved in the outage to the related information in SAP. This number does not represent the physical number of the equipment

<b>Area</b>	<b>[Maintenance Planner Group]</b> A code representing the energy, region and service center	
	EAA – Bellingham	EBJ – South King
	EAB – Lynden	EBK – Southwest King
	EAC – Skagit	EBL – Vashon
	EAD – Whidbey	ECA – Puyallup
	EBD – Redmond	ECC – Olympia
	EBE – Factoria	ECD – Port Orchard
	EBF – Snoqualmie	ECE – Poulsbo
	EBI – Enumclaw	ECF – Port Townsend

<b>Cause</b>	Cause of Outage	
	AO – Accident Other	EF – Equipment Failure
	BA – Bird or Animal	EO – Electrical Overload
	CP – Car Pole	FI – Faulty Installation
	CR – Customer Request	TF – Tree Off Right-of-Way
	DU – Dig-up Underground	TO – Tree On Right-of-Way
	SO – Scheduled Outage	UN – Unknown

<b>Equipment</b>	Affected by, or involved in the outage	
	OCN – Connector	OSW – Overhead Switch
	OCO – Overhead Conductor	OTF – Overhead Transformer Fuse
	OCR – Crossarm	OTR – Overhead Transformer
	OFC – Overhead Cut-out	OUP – OH to UG Primary
	OFS – Overhead Fire Signal	OUS – OH to UG Secondary Service
	OFU – Fuse Link/OH Line Fuse	SBF – High-side Bank Fuse
	OGS – Span Guy	SCB – Power Circuit Breaker
	OHR – Overhead Recloser	UOT – Underground Outdoor Term
	OIN – Insulator	UPC – Underground Primary Cable
	OJU- Jump Wire	UPT – Padmount Transformer
	OPI – Overhead Pin Insulator	USV – Underground Service
	OPO – Pole	UTC – Underground Terminal Fuse
	OSV – Overhead Service	UTR – Submersible Transformer
	ORE – Regulator	

Qualifying Storm Event  
March 8, 2006

### Codes, Definitions – Continued

<b>CUST OUT</b>	<b>[Customer Out]</b> The number of customers without power for any given outage record
<b>CUST MIN</b>	<b>[Customer Minutes]</b> The total number of minutes customers were without power for any given record
<b>CODE</b>	<b>[Storm Code]</b> An event descriptor
	NON – Non Storm / Normal Conditions
	WTH – Weather Related (eg: wind storm, showers, etc)
	MAJ – Major event

### Newsprint Media Coverage

No printed media coverage for this event.