



2006
Qualifying Storm Events

February 4, 2006

Table of Contents

Table of Contents	2
Event Description	3
Date of event	3
Event Type	3
Service Areas Affected	3
Number of Customers Affected	3
Summary of System Impacts	3
Mobilization Summary	3
Major Event Day – Qualification	6
Qualified Events - 2006	6
Current Event – Calculation Detail	6
Cumulative list of events that have qualified	6
Event Restoration – Cost Summary	7
Restoration Cost Detail by Qualifying Event	7
YTD Storm Restoration Cost Detail – Through February 4, 2006	7
Detail Documents	8
Restoration Cost Detail – Current Event	9
Detailed List of Distribution Circuits with Outages	10
Terms, Codes and Definitions Used on Detail Reports	28
Newsprint Media Coverage	30

Event Description

Date of event

February 4, 2006

Event Type

This event was a major wind storm for the Puget Sound region.

On February 3rd, the National Weather Service issued a wind advisory for the northern Puget Sound, including western Skagit and Whatcom counties. Just before midnight, the forecasted winds did materialize, however the storm impacted a much wider area than was originally anticipated. Winds began initially in Thurston County and then spread north, producing gusts in excess of 60mph. These winds quickly caused wide-spread damage throughout much of western Washington.

Throughout the region, rain-soaked soil, resulting from near-record rainfall in January, contributed to the vast numbers of trees that were toppled-over by the high winds. Winds continued throughout the night and blustery conditions persisted until early evening on February 4th.

Service Areas Affected

This intense storm impacted all areas of Puget Sound Energy's (PSE's) service area. Kitsap county was the hardest hit where severe winds extracted a heavy toll on the densely forested communities.

Number of Customers Affected

Approximately 246,650 customers lost electric power over the course of this event.

Summary of System Impacts

Total Number of Outages	1,367
Distribution Circuits Totally Out	103
Distribution Circuits Partially Out	264

Transmission Circuits Affected	32
Substations Totally Off-line	34

Mobilization Summary

As damage assessment information came in, it became clear on the morning of February 4th that damage to PSE's system was extensive and significant outside assistance would be required to help rebuild our system and restore power.

Including its' service provider resources, PSE mobilized a total of 122 crews from regional contractors and a public utility district, some coming from as far as northern California. Thirty (30) regional tree crews were used to help clear trees and debris.

Qualifying Storm Event
February 4, 2006

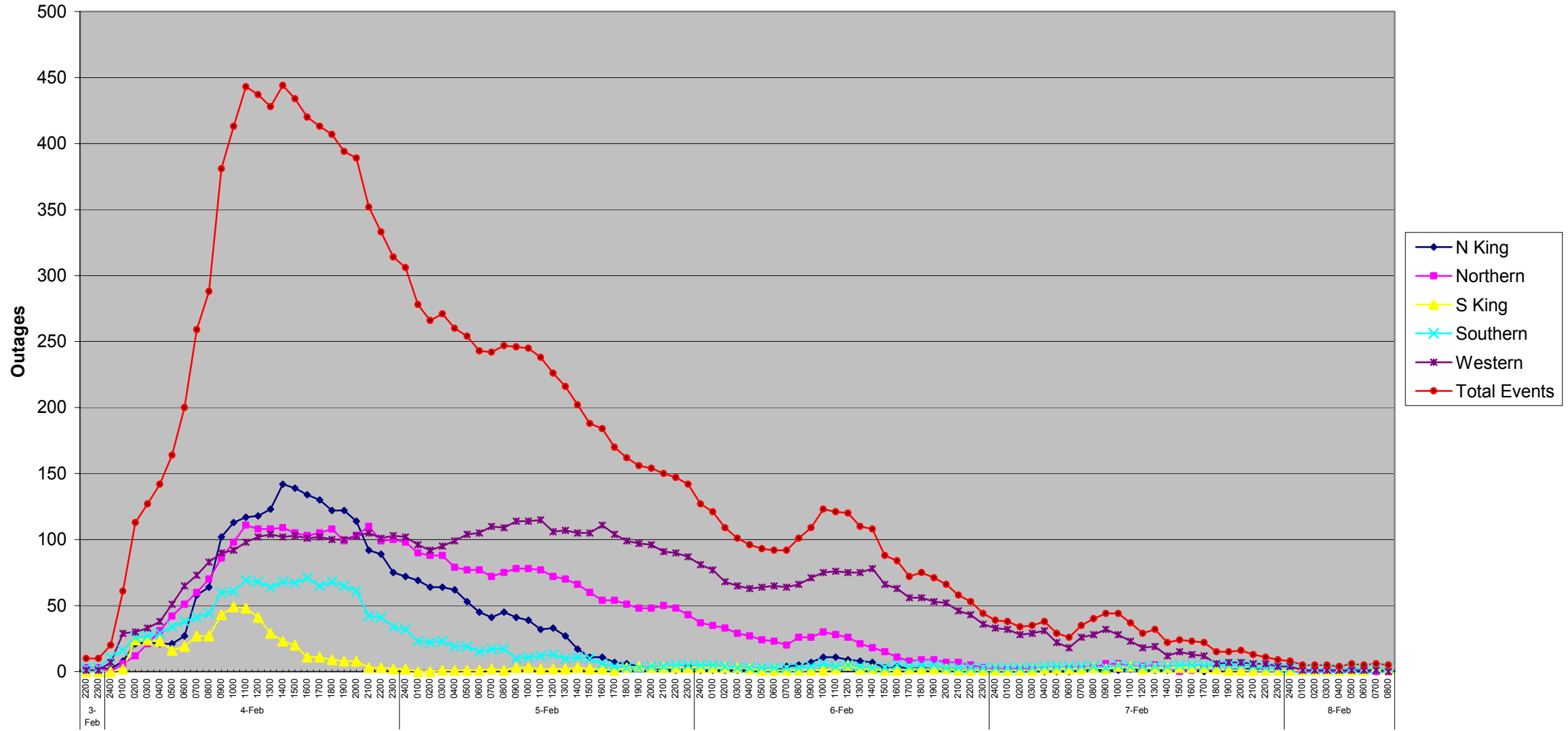
Operating bases

Base	Date Opened	Time Opened	Date Closed	Time Closed
Thurston	2/3/06	23:45	2/5/06	12:00
Kitsap	2/4/06	00:00	2/7/06	21:45
N-King	2/4/06	01:00	2/5/06	21:00
Skagit	2/4/06	01:15	2/6/06	16:30
S-King	2/4/06	01:30	2/4/06	22:30
Pierce	2/4/06	03:15	2/5/06	11:30
Whatcom	2/4/06	03:15	2/6/06	16:30

Emergency Operations Center

EOC	Date Opened	Time Opened	Date Closed	Time Closed
	2/4/06	01:00	2/7/06	13:15

Outage Events - February 4, 2006



Major Event Day – Qualification

IEEE 1366 Method

IEEE 1366 was established to present a set of terms and definitions which can be used to foster uniformity in the development of distribution service reliability indices, to identify factors which affect the indices, and to aid in consistent reporting practices among utilities. Also, it provides guidance for new personnel in the reliability area, and tools for internal as well as external comparisons. The Major Event Day definition was created as part of IEEE 1366 to allow for consistent calculation of reliability metrics between utilities, and enable more valid comparisons with other utility reliability metrics.

IEEE Major Event Day Calculation (2.5 BETA METHOD)

1. A threshold on daily SAIDI is computed once a year, following year end.
2. Assemble the 5 most recent years of historical values of SAIDI/day.
3. Discard any days in the data set that has a SAIDI/day of zero.
4. Find the natural logarithm of each value in the data set.
5. Compute the average Alpha and the standard deviation (Beta) of the natural logarithms computed in step 3.
6. Compute the threshold Tmed where $Tmed = \exp(\text{Alpha} + 2.5 * \text{Beta})$
7. Any day in the next year with SAIDI > Tmed is a major event day.

Puget Sound Energy's Major Event Threshold for 2006: 4.97 Minutes

Qualified Events - 2006

Current Event – Calculation Detail

Event Date	Total Customer Minutes	Average Customer Count	Daily SAIDI – Customer Minutes / Customer Count
2/4/2006	166,163,649	1,027,906	161.65

Cumulative list of events that have qualified

Date(s)	T-med Score	O&M – Deferrable Accumulation
1/1/2006	5.35	\$242,708
1/31/2006	11.19	\$653,176
2/4/2006	161.65	\$6,104,116

Event Restoration – Cost Summary

Restoration Cost Detail by Qualifying Event

Date	Capital	C&D Costs Recoverable from Direct Billings (Costs Not Yet Billed)	O&M – Not Deferrable	O&M – Deferrable Accumulation	Total O&M	Total
1/1/2006	\$0	\$0	\$23,995	\$242,708	\$266,703	\$266,703
1/31/2006	\$70,613	\$0	\$35,780	\$653,176	\$688,956	\$759,569
2/4/2006	\$311,579	\$0	\$395,638	\$6,104,116	\$6,499,754	\$6,811,333

YTD Storm Restoration Cost Detail – Through February 4, 2006

Catastrophic Deferred Account	Capital	C&D Costs Recoverable from Direct Billings (Costs Not Yet Billed)	O&M – Not Deferrable	O&M Deferrable Accumulation	Total O&M	Total
\$2,853,981	\$382,192	\$0	\$455,413	\$7,000,000	\$7,455,413	\$10,691,586

Qualifying Storm Event
February 4, 2006

Detail Documents

Restoration Cost Detail – Current Event

Detailed List of Distribution Circuits with Outages

Terms, Codes & Definitions Used on Detail Reports

Newsprint Media Coverage

Restoration Cost Detail – Current Event

Puget Sound Energy February 4, 2006 Storm Damage Repair Costs							
	Catastrophic Deferred Account	Capital	C&D Recoverable from Direct Billings (Costs Not Yet Billed)	O&M - Not Deferrable	O&M - Deferrable Accumulation	Total O&M	Total
Labor							
ST					\$23,462	\$23,462	\$23,462
OT		\$0			\$777,895	\$777,895	\$777,895
Total Labor	\$0	\$0	\$0	\$0	\$801,357	\$801,357	\$801,357
Labor OH					\$348,896	\$348,896	\$348,896
Materials		\$72,162			\$311,137	\$311,137	\$383,299
Contractors		\$194,722			\$7,356,837	\$7,356,837	\$7,551,559
Other Direct Charges					\$36,391	\$36,391	\$36,391
Fleet					\$103,479	\$103,479	\$103,479
Other Assessments		\$44,695		\$395,638	\$0	\$395,638	\$440,333
Deferred Expenses	\$2,853,981				(\$2,853,981)	(\$2,853,981)	\$0
	\$2,853,981	\$311,579	\$0	\$395,638	\$6,104,116	\$6,499,754	\$9,665,314

Detailed List of Distribution Circuits with Outages

February 4th – IEEE-1366 Data

Notification	Date	Time	Circuit	Area	Cause	Equipment	Cust Outs	Cust Mins
E033039419	2/4/2006	0:01:00	BHL-16	ECE	EF	OFU	70	159,530
E936811322	2/4/2006	0:01:00	CHR-23	ECE	TF	OCO	427	622,566
E759649306	2/4/2006	0:02:00	PAT-17	ECC	TF	OFC	37	5,550
E764520047	2/4/2006	0:05:00	SIL-13	ECF	TF	OPO	110	270,050
E350774226	2/4/2006	0:06:00	MIL-16	ECE	TO	OCO	733	1,342,856
E101818712	2/4/2006	0:07:00	CHR-22	ECE	TF	OCO	255	365,670
E139732888	2/4/2006	0:10:00	POU-13	ECE	TF	OCO	157	163,280
10623070	2/4/2006	0:10:00	TLN-0109	ECE	TO	OCO	3,717	3,717
E838283744	2/4/2006	0:12:00	PGA-13	ECE	TO	OCO	608	1,543,104
E975851797	2/4/2006	0:12:00	PGA-13	ECE	TO	OCO	438	1,269,324
E048949502	2/4/2006	0:13:00	PLG-13	ECC	TF	OCO	1,671	118,641
E510274885	2/4/2006	0:14:00	GRV-12	ECA	TF	OCO	848	386,688
E598954330	2/4/2006	0:14:00	LGY-15	EAD	AO	OFU	3,295	408,580
E199158114	2/4/2006	0:15:00	CEK-14	ECE	TO	OCO	911	1,198,335
E717345910	2/4/2006	0:16:00	TRA-26	ECE	TF	OCO	252	540,288
E569734934	2/4/2006	0:19:00	PGA-12	ECE	TO	OCO	697	1,973,207
E008528131	2/4/2006	0:20:00	BRO-16	EAD	TF	OPO	143	364,650
E696443543	2/4/2006	0:21:00	BRO-15	EAD	EF	OCO	158	184,702
E176420826	2/4/2006	0:21:00	SIN-22	ECD	TO	OCO	152	316,008
E184157741	2/4/2006	0:23:00	TRA-22	ECE	TF	OCO	400	76,000
E675615828	2/4/2006	0:28:00	SKE-22	ECE	TF	OCO	224	94,528
E386757826	2/4/2006	0:30:00	RPT-22	ECD	TF	OFC	74	211,418
E254671134	2/4/2006	0:32:00	AVO-17	EBD	TO	OCO	300	60,300
E009995428	2/4/2006	0:33:00	PGA-13	ECE	TF	OCO	969	2,816,883
E190510033	2/4/2006	0:34:00	BLU-17	ECC	UN	OHS	62	48,217
E135461306	2/4/2006	0:35:00	MLK-15	EBE	TO	OCO	882	86,686
E323457192	2/4/2006	0:35:00	COT-16	EBD	TO	OCO	949	80,618
E677810395	2/4/2006	0:40:00	HWD-22	EBD	TO	OCO	1,559	196,434
E377169522	2/4/2006	0:40:00	POU-15	ECE	TF	OCO	1,304	247,760
10622989	2/4/2006	0:40:00	PGA-12	ECE	TO	OCO	1	772
E724218959	2/4/2006	0:41:00	POU-16	ECE	TO	OCO	780	716,820
E981307095	2/4/2006	0:42:00	PGA-15	ECF	TO	OCO	243	277,749
E809182921	2/4/2006	0:43:00	COT-13	EBD	TO	OCO	2,022	3,026,934
E003204403	2/4/2006	0:45:00	FNW-16	ECD	TF	OCR	763	1,766,345
E143083141	2/4/2006	0:45:00	LON-22	ECC	TF	OCO	295	97,425
E826202208	2/4/2006	0:45:00	RIV-13	EAC	TF	OFU	50	1,562
E588265092	2/4/2006	0:46:00	PIN-26	EBF	TO	OCO	1,278	126,522
E032367359	2/4/2006	0:49:00	CHR-25	ECE	TF	OTR	2,044	1,351,084
E077913929	2/4/2006	0:50:00	CUM-15	EBI	TO	OCO	852	86,166
E747157853	2/4/2006	0:51:00	PAN-15	EBJ	TF	OFU	1	82
E250662746	2/4/2006	0:52:00	CHR-22	ECE	TF	OCO	29	81,142
E849122958	2/4/2006	0:52:00	PGA-12	ECE	TO	OCO	22	57,596
E215294570	2/4/2006	0:55:00	PTL-16	ECF	TF	OPO	550	2,296,250

Qualifying Storm Event
February 4, 2006

Notification	Date	Time	Circuit	Area	Cause	Equipment	Cust Outs	Cust Mins
E598250592	2/4/2006	0:55:00	PTL-16	ECF	TO	OCO	18	36,108
E952740014	2/4/2006	0:56:00	ELD-23	ECC	TF	OCO	16	4,624
E408286346	2/4/2006	1:03:00	CAM-25	EBJ	TF	OCO	2,827	1,744,259
E059260506	2/4/2006	1:03:00	STA-16	EBJ	TO	OPO	13	8,541
E656606915	2/4/2006	1:05:00	SOO-25	EBI	TF	OCO	181	58,825
E080387553	2/4/2006	1:06:00	MAN-16	ECD	TO	OCO	573	202,842
E392426573	2/4/2006	1:07:00	BTR-22	EBE	TO	OCO	129	9,417
E301920750	2/4/2006	1:09:00	PEA-15	EBJ	TO	OCO	12	1,260
E204982728	2/4/2006	1:10:00	BDI-15	EBI	TF	OCO	7	5,810
E924741807	2/4/2006	1:13:00	GRV-16	ECA	TF	OTF	4	2,048
E206581025	2/4/2006	1:17:00	BIG-15	EAC	EF	OCO	25	10,100
E846680420	2/4/2006	1:19:00	GAG-13	EAC	TF	OSV	2	202
E214792672	2/4/2006	1:20:00	HKX-16	EAC	EF	OCO	172	319,960
E200893013	2/4/2006	1:22:00	LEA-15	EBI	TO	OCO	1,800	322,200
E746959875	2/4/2006	1:23:00	SPA-16	ECA	UN	OCO	1,091	826,978
E210087379	2/4/2006	1:24:00	LYO-12	EBJ	TF	OCO	4	528
E099622793	2/4/2006	1:25:00	NOB-24	EBE	TO	OCO	1,069	249,077
E043317459	2/4/2006	1:25:00	LAC-17	ECC	TF	OCO	29	11,252
E466876780	2/4/2006	1:26:00	SHD-18	EBI	TF	OCO	20	7,880
E375070096	2/4/2006	1:30:00	WOO-26	ECA	TF	OCO	80	36,960
E592594330	2/4/2006	1:30:00	HEM-13	ECA	EF	OTR	408	172,992
E496434327	2/4/2006	1:32:00	BDI-12	EBI	TF	OCO	156	55,068
E267803518	2/4/2006	1:33:00	LMD-13	EBJ	TF	OCO	238	37,366
E894800752	2/4/2006	1:34:00	HAM-13	EAC	TF	OFU	25	3,650
E945777324	2/4/2006	1:36:00	EDG-13	ECA	UN	OFC	22	9,878
E145154692	2/4/2006	1:37:00	PHA-13	EBE	TO	OCO	1,036	168,868
E291320042	2/4/2006	1:37:00	CAM-24	EBJ	TF	OCO	236	37,760
E251369141	2/4/2006	1:40:00	MVW-13	EBJ	TF	OCO	36	13,680
E200666429	2/4/2006	1:41:00	GWR-13	EBI	TF	OCO	34	5,406
E629547470	2/4/2006	1:43:00	KCR-15	EBJ	TF	OCO	34	15,878
E025197173	2/4/2006	1:44:00	HOB-15	EBI	TF	OCO	17	9,452
E105464562	2/4/2006	1:45:00	LMC-27	EBF	TO	OCO	68	33,864
E162640520	2/4/2006	1:46:00	CLA-13	EBI	TF	OCO	2	698
E847842543	2/4/2006	1:46:00	FAL-13	EBF	TO	OCO	23	21,735
E524312787	2/4/2006	1:46:00	WOO-27	ECA	TF	OCO	15	22,620
E580353441	2/4/2006	1:48:00	WCA-16	EBJ	TF	OCO	17	10,489
E851123416	2/4/2006	1:53:00	ENU-17	EBI	TF	OCO	25	15,425
E126741377	2/4/2006	1:54:00	BON-15	ECA	EF	CDH	22	11,286
E544990476	2/4/2006	1:54:00	BDI-13	EBI	TF	OHR	44	2,112
E159062848	2/4/2006	1:54:00	GLA-12	EAA	AO	OCO	2	2,132
E412709583	2/4/2006	1:55:00	KEN-12	EAA	EF	OCO	16	13,040
E510499375	2/4/2006	1:55:00	BUC-16	ECA	UN	OCO	10	8,030
E440736509	2/4/2006	1:57:00	NUG-26	EAA	TF	OCO	50	135,250
E902891121	2/4/2006	1:57:00	NUG-26	EAA	TF	OCO	70	218,900
E903552985	2/4/2006	1:59:00	ALG-15	EAA	EF	OFC	460	948,060
E554898633	2/4/2006	1:59:00	NBE-13	EBF	TF	OCO	984	156,456
E951620225	2/4/2006	1:59:00	ALG-15	EAA	TO	OPO	117	286,777
E760100418	2/4/2006	2:00:00	ROC-26	ECC	TF	OTF	2	116

Qualifying Storm Event
February 4, 2006

Notification	Date	Time	Circuit	Area	Cause	Equipment	Cust Outs	Cust Mins
E024599588	2/4/2006	2:00:00	LON-23	ECC	UN	ORE	1,499	479,680
E150526794	2/4/2006	2:01:00	ROS-21	EBD	TO	OCO	2,195	1,207,250
E330639189	2/4/2006	2:01:00	SCH-15	EAA	TF	OCO	44	93,896
E302643536	2/4/2006	2:01:00	KEN-13	EAA	TO	OCO	19	19,931
E102946994	2/4/2006	2:01:00	SCH-15	EAA	TF	OPO	34	71,366
E486097104	2/4/2006	2:05:00	BRS-13	EAC	EF	OCO	13	10,075
E493668781	2/4/2006	2:11:00	FLD-13	EAD	TO	OCO	200	16,400
E138416071	2/4/2006	2:12:00	CHI-12	ECD	TO	OCO	630	769,560
E246126313	2/4/2006	2:18:00	MIL-16	ECE	TO	OCO	86	221,708
E345358694	2/4/2006	2:21:00	GWR-16	EBI	TF	OCO	3	612
E498040611	2/4/2006	2:21:00	NUG-26	EAA	EF	OFC	94	188,846
E201843445	2/4/2006	2:22:00	WWR-39	EBI	TF	OCO	1	118
E000268159	2/4/2006	2:23:00	BRO-15	EAD	TF	OCO	122	233,264
E368655373	2/4/2006	2:27:00	PGA-12	ECE	TO	OCO	1	2,493
E522716897	2/4/2006	2:29:00	AVO-15	EBD	TO	OPO	530	1,129,430
E557558442	2/4/2006	2:30:00	AVO-15	EBD	TO	OCO	593	1,204,976
E288801326	2/4/2006	2:31:00	BRI-15	EAA	TF	OFU	2	1,658
E693023896	2/4/2006	2:32:00	FRA-12	ECD	TF	OCO	1,567	263,256
E325098940	2/4/2006	2:34:00	LAB-26	EAA	TF	OFU	8	11,016
E313939582	2/4/2006	2:35:00	FRA-16	ECD	TO	OPO	20	45,200
E917846025	2/4/2006	2:35:00	HAN-12	EAA	TF	OPO	30	100,650
E685692493	2/4/2006	2:41:00	BAR-15	ECC	TF	OCO	11	7,029
E738788030	2/4/2006	2:44:00	KCR-16	EBJ	TF	OCO	534	299,574
E001346452	2/4/2006	2:45:00	LLT-17	EBD	TO	OPO	215	165,980
E495180688	2/4/2006	2:46:00	NUG-26	EAA	TO	OCO	125	268,000
E863637295	2/4/2006	2:48:00	CRE-16	EAD	TO	OCO	837	796,824
E324032968	2/4/2006	2:50:00	CPV-13	EAD	TF	OFU	540	216,000
E753833665	2/4/2006	2:53:00	NBE-12	EBF	TO	OCO	18	1,890
E084886364	2/4/2006	2:53:00	HWD-22	EBD	TO	OCO	4	364
E661699477	2/4/2006	2:55:00	BAK-26	EAA	TF	OFU	5	1,775
E054715802	2/4/2006	2:56:00	RAI-11	ECC	TF	OCO	22	16,280
E665436302	2/4/2006	2:57:00	MUR-15	ECE	TO	OPO	100	182,500
E809150236	2/4/2006	2:59:00	MUR-13	ECE	TO	OCO	100	193,800
E353244541	2/4/2006	3:05:00	PRI-21	ECC	TF	OCO	188	141,940
E684738358	2/4/2006	3:12:00	HAP-16	EAA	EF	OAR	524	651,332
E829020601	2/4/2006	3:12:00	HAP-16	EAA	TO	OCO	230	388,240
E033082036	2/4/2006	3:14:00	BRW-16	EAC	TO	OJU	1,950	436,750
E678304817	2/4/2006	3:24:00	QUI-26	ECF	TF	OPO	61	90,036
E998656422	2/4/2006	3:25:00	QUI-25	ECF	TF	OCO	100	120,800
E839862033	2/4/2006	3:28:00	BRO-15	EAD	TF	OCO	344	867,568
E041536929	2/4/2006	3:29:00	LYN-26	EAA	TO	OCO	374	191,114
E725683390	2/4/2006	3:32:00	FRA-13	ECD	TF	OCO	1,274	214,032
E978011297	2/4/2006	3:32:00	VWY-13	EAA	TF	OFU	1	298
E191481514	2/4/2006	3:32:00	BLA-13	EAA	TO	OFU	500	100,000
E790669902	2/4/2006	3:33:00	VIS-26	EAA	TO	OCO	128	85,376
E554125474	2/4/2006	3:37:00	BRE-35	ECE	TO	OFC	4	7,532
E201847909	2/4/2006	3:44:00	IRO-13	ECF	TO	OCO	208	452,608
E466430393	2/4/2006	3:45:00	BLA-12	EAA	TF	OCO	46	66,930
E694844075	2/4/2006	3:48:00	PET-13	EAC	TO	OFU	1,573	113,256

Qualifying Storm Event
February 4, 2006

Notification	Date	Time	Circuit	Area	Cause	Equipment	Cust Outs	Cust Mins
E097929364	2/4/2006	3:49:00	WOB-23	EAA	TO	OCO	12	5,712
E684069251	2/4/2006	3:50:00	CHI-12	ECD	TF	OCO	20	30,820
E832948653	2/4/2006	3:52:00	GBK-15	EAD	TO	OCO	162	433,836
E335292670	2/4/2006	3:52:00	FLD-12	EAD	TO	OCO	5	17,705
E071326488	2/4/2006	3:55:00	FLD-15	EAD	EF	OCO	157	154,525
E955489357	2/4/2006	3:55:00	HOL-12	ECA	TF	OTR	22	31,724
E838651763	2/4/2006	3:55:00	CRE-13	EAD	TO	OFU	670	606,350
E306994931	2/4/2006	4:01:00	POU-15	ECE	TO	OCO	547	688,673
E131188157	2/4/2006	4:01:00	WIN-15	ECE	TO	OCO	1,223	978,400
E180934610	2/4/2006	4:03:00	BLA-13	EAA	TO	OPO	46	21,022
E449768056	2/4/2006	4:03:00	CPV-15	EAD	EF	OCO	220	256,740
E200498620	2/4/2006	4:05:00	WIN-16	ECE	TO	OCO	624	496,704
E739719080	2/4/2006	4:07:00	CRE-12	EAD	TF	OCO	1,041	1,025,008
E909906180	2/4/2006	4:08:00	CRE-15	EAD	TO	OCO	1,022	1,377,404
E521429283	2/4/2006	4:09:00	MUR-16	ECE	TO	OCO	1,007	1,350,387
E119853329	2/4/2006	4:10:00	PMA-16	ECE	TO	OCO	174	689,736
E372798369	2/4/2006	4:10:00	KAP-13	ECA	UN	OCO	20	27,660
E696741152	2/4/2006	4:12:00	KEA-13	ECF	TF	OCO	85	140,080
E787442720	2/4/2006	4:13:00	RAI-12	ECC	TO	OCO	1,590	340,260
E034610512	2/4/2006	4:16:00	GBK-13	EAD	TF	OCO	87	123,192
E005739015	2/4/2006	4:18:00	SIL-17	ECE	TO	OCO	22	78,408
E523638352	2/4/2006	4:20:00	HAS-12	ECF	EF	OTF	23	26,289
E681038074	2/4/2006	4:23:00	SUM-15	EAC	TO	OSW	3	306
E277406909	2/4/2006	4:25:00	WIN-16	ECE	EF	OSV	44	74,140
E199033941	2/4/2006	4:25:00	VAS-13	EBL	TO	OCO	80	78,400
E208140212	2/4/2006	4:28:00	EPO-13	ECD	TF	OCO	331	606,392
E143101751	2/4/2006	4:28:00	PET-16	EAC	TO	OCO	21	6,342
E635431694	2/4/2006	4:29:00	MIL-22	ECE	TO	OCO	913	1,993,318
E203670354	2/4/2006	4:30:00	ROE-13	EAA	TF	OFU	8	9,720
E810016394	2/4/2006	4:31:00	BRW-15	EAC	TF	OPO	2,090	3,086,510
E263560905	2/4/2006	4:34:00	TLN-0138	ECF	TF	OPO	2,844	6,775,053
E102336565	2/4/2006	4:35:00	RPT-26	ECD	TF	OCO	99	259,083
E652012105	2/4/2006	4:36:00	WLS-16	EAC	EF	OTR	28	24,048
E433398858	2/4/2006	4:39:00	LGY-16	EAD	TF	OCO	634	1,619,094
E211043148	2/4/2006	4:39:00	ROC-17	ECC	TF	OTF	1	133
E439834686	2/4/2006	4:42:00	ELD-25	ECC	TF	OCO	17	14,773
E725631217	2/4/2006	4:45:00	NBO-25	EBD	TO	OCO	922	448,092
E088322804	2/4/2006	4:47:00	FLD-13	EAD	TF	OCO	49	13,867
E181663383	2/4/2006	4:48:00	IRO-15	ECF	TF	OCO	1,623	514,491
E518846608	2/4/2006	4:52:00	ING-13	EBD	TO	OCO	1,811	208,265
E511342541	2/4/2006	4:55:00	AVO-17	EBD	TO	OCO	12	2,280
E168534023	2/4/2006	4:56:00	AIR-26	ECC	UN	OCO	70	76,480
10623025	2/4/2006	4:57:00	TLN-0136	ECE	TF	OCO	4,647	1,635,744
E730876906	2/4/2006	4:58:00	ING-15	EBD	TO	OCO	8	7,216
E681813633	2/4/2006	4:59:00	HAS-13	ECF	TO	OPO	105	180,705
E955170740	2/4/2006	5:00:00	MIL-17	ECE	TO	OPO	676	1,392,560
E759130289	2/4/2006	5:02:00	WOL-25	ECC	UN	OCO	19	14,763
10623028	2/4/2006	5:03:00	TLN-0192	ECE	TO	OCO	1	153
E306442789	2/4/2006	5:03:00	TLN-9997	ECE	TF	OCO	7,769	6,819,907

Qualifying Storm Event
February 4, 2006

Notification	Date	Time	Circuit	Area	Cause	Equipment	Cust Outs	Cust Mins
E238750514	2/4/2006	5:03:00	TLN-0191	ECE	TO	OCO	8,336	715,440
E517611821	2/4/2006	5:06:00	WIN-12	ECE	TO	OCO	487	1,326,588
E679474165	2/4/2006	5:07:00	BHL-12	ECE	EF	OJU	2	4,746
E107229027	2/4/2006	5:07:00	PMA-12	ECE	TO	OCO	181	707,167
E189732682	2/4/2006	5:08:00	PMA-13	ECE	TF	OCO	608	988,348
E011712882	2/4/2006	5:10:00	LGY-12	EAD	TF	OCO	136	165,920
E369144334	2/4/2006	5:10:00	FNW-13	ECD	TO	OPO	408	730,320
10619653	2/4/2006	5:11:00	PMA-15	ECE	TO	OCO	100	144,000
E732643604	2/4/2006	5:11:00	PMA-15	ECE	TF	OCO	50	95,950
E939649250	2/4/2006	5:11:00	CHI-12	ECD	TO	OCO	12	20,748
E654376340	2/4/2006	5:11:00	BTN-36	EAC	TO	OFU	3	459
E455143207	2/4/2006	5:14:00	CUS-16	EAA	TF	OFU	4	4,984
E912085930	2/4/2006	5:16:00	HEM-17	ECA	TF	OCO	1,290	33,540
E114327236	2/4/2006	5:16:00	MOT-14	ECC	TF	OCO	23	15,847
E734144551	2/4/2006	5:21:00	LGY-16	EAD	TF	OCO	57	81,168
E361570282	2/4/2006	5:21:00	ORC-13	EBJ	TF	OSV	1	54
E347564901	2/4/2006	5:21:00	WAY-12	EBD	TO	OCO	132	234,036
E449723114	2/4/2006	5:23:00	LGY-12	EAD	TO	OCO	157	244,449
E835129792	2/4/2006	5:24:00	MIL-22	ECE	TF	OCO	105	403,380
E095460792	2/4/2006	5:27:00	LGY-16	EAD	TF	OCO	40	51,720
E599756676	2/4/2006	5:30:00	TRA-22	ECE	TO	OCO	1,571	1,521,770
E758280911	2/4/2006	5:31:00	BLU-13	ECC	TF	OCO	32	22,048
E570067874	2/4/2006	5:32:00	MCW-17	ECE	TO	OCO	1,144	245,620
E263108844	2/4/2006	5:36:00	FRA-12	ECD	TF	OCR	1,197	2,448,853
E700421303	2/4/2006	5:39:00	LGY-13	EAD	TF	OFU	13	14,313
E926903899	2/4/2006	5:42:00	SKE-26	ECE	TO	OCO	91	397,488
E937451656	2/4/2006	5:43:00	CLV-16	EAD	TF	OCO	206	306,116
E251869972	2/4/2006	5:43:00	LGY-15	EAD	UN	OFU	800	238,100
E652599405	2/4/2006	5:46:00	EGT-12	EBE	TO	OCO	2,651	1,788,124
E403822034	2/4/2006	5:46:00	LGY-16	EAD	TF	OFC	47	59,878
E171316325	2/4/2006	5:48:00	BRW-13	EAC	TO	OFU	1,838	1,520,026
E936971407	2/4/2006	5:49:00	MAN-15	ECD	TO	OFU	893	1,376,113
E774473223	2/4/2006	5:52:00	HAZ-16	EBE	TO	OCO	9	13,572
E856942662	2/4/2006	5:52:00	LMC-25	EBF	TO	OCO	15	2,820
E432150194	2/4/2006	5:55:00	CHR-22	ECE	TO	OCO	189	567,045
E632310882	2/4/2006	5:55:00	LMC-23	EBF	TO	OCO	1,023	158,565
E919241843	2/4/2006	5:56:00	WLK-15	ECA	TF	OCO	5	6,810
E894220379	2/4/2006	5:56:00	ROL-13	EBJ	TF	OCO	486	35,964
E770138588	2/4/2006	6:01:00	HEM-16	ECA	TO	OCR	4	4,516
E716489124	2/4/2006	6:05:00	NLM-15	EAC	TO	OTR	21	19,695
E833456094	2/4/2006	6:06:00	VAS-12	EBL	TO	OCO	703	993,339
E405691841	2/4/2006	6:08:00	HLC-24	EAD	TO	OCO	1,242	1,527,660
E123947613	2/4/2006	6:08:00	FAB-15	EAD	TF	OFU	28	15,736
E580969261	2/4/2006	6:09:00	HAM-13	EAC	TO	OFU	814	358,974
E679594806	2/4/2006	6:10:00	DUV-12	EBD	TO	OCO	327	166,770
E677775526	2/4/2006	6:13:00	LOL-21	ECD	TO	OPO	1,200	379,200
E569167986	2/4/2006	6:14:00	FNW-17	ECD	TF	OTR	1,055	2,518,530
E799421292	2/4/2006	6:16:00	MAN-15	ECD	TO	OCO	34	115,838
E173532575	2/4/2006	6:17:00	VAS-23	EBL	TF	OCO	147	211,161

Qualifying Storm Event
February 4, 2006

Notification	Date	Time	Circuit	Area	Cause	Equipment	Cust Outs	Cust Mins
E562134198	2/4/2006	6:17:00	SOM-16	EBE	TO	OCO	16	1,648
E760527528	2/4/2006	6:17:00	SOM-15	EBE	EF	UTC	23	2,369
E634204868	2/4/2006	6:17:00	SME-15	EBE	TO	OCO	54	18,738
E490140347	2/4/2006	6:18:00	SME-13	EBE	TO	OCO	88	38,808
E110762087	2/4/2006	6:18:00	LEA-15	EBI	TF	OCO	460	74,520
E635865139	2/4/2006	6:20:00	MLK-13	EBE	TO	OCO	70	149,800
E658768769	2/4/2006	6:21:00	DUV-15	EBD	TO	OCO	1	1,459
E572434969	2/4/2006	6:21:00	TOL-17	EBD	TO	OCO	9	10,296
E238554789	2/4/2006	6:23:00	NHL-15	EBD	TO	OCO	3,139	602,688
E219809422	2/4/2006	6:24:00	FRA-13	ECD	TF	OCO	1,597	2,322,752
E823525356	2/4/2006	6:24:00	MCA-15	ECC	TF	OSV	5	4,085
E429262141	2/4/2006	6:27:00	HOU-25	EBD	TO	OCO	359	127,445
E285813946	2/4/2006	6:29:00	SIL-15	ECE	TF	OCR	13	31,668
E015219220	2/4/2006	6:33:00	CPV-15	EAD	TF	OCO	40	80,280
E188181041	2/4/2006	6:33:00	DES-15	EBJ	TF	OFC	35	15,645
E116866141	2/4/2006	6:35:00	MAP-15	EBF	TO	OCO	189	263,655
E603868799	2/4/2006	6:36:00	MAN-12	ECD	TF	OCO	1,214	1,898,696
E251753544	2/4/2006	6:36:00	PLA-21	EBD	TO	OCO	30	2,460
E736959132	2/4/2006	6:36:00	EDG-16	EBJ	TF	OCO	173	49,132
E039925857	2/4/2006	6:37:00	LYO-12	EBJ	TF	OCO	94	32,712
E496226864	2/4/2006	6:37:00	KLA-15	EBD	TO	OCO	10	1,130
E966788963	2/4/2006	6:38:00	SAH-13	EBD	TO	OCO	67	46,565
E096240826	2/4/2006	6:38:00	KLA-17	EBF	EF	OTF	4	448
E275455760	2/4/2006	6:41:00	PLA-24	EBD	TO	OCO	117	114,543
E408740515	2/4/2006	6:41:00	PIN-25	EBF	TO	OCO	1,780	1,422,220
E479924436	2/4/2006	6:44:00	PRI-23	ECC	TO	OCO	14	8,344
E672778653	2/4/2006	6:46:00	CHA-15	ECC	TF	OJU	2	1,048
E550219804	2/4/2006	6:47:00	NLM-13	EAC	TO	OFU	649	174,581
E897381015	2/4/2006	6:47:00	KLA-16	EBF	TO	OCO	9	918
E326527792	2/4/2006	6:50:00	SWA-16	EAD	TF	OCO	39	90,441
E407419922	2/4/2006	6:50:00	SLA-15	EAA	TF	OFU	22	16,280
E656179541	2/4/2006	6:51:00	FWD-17	EBJ	TF	OCO	26	4,914
E474349694	2/4/2006	6:52:00	BEL-17	EBJ	TF	OFC	22	12,056
E825616359	2/4/2006	6:54:00	SUM-13	EAC	TO	OFU	1,582	969,766
E556755625	2/4/2006	6:54:00	KLA-18	EBF	TO	OCO	14	1,344
E584416885	2/4/2006	6:54:00	DGR-13	ECA	TF	OCO	2	2,682
E286166113	2/4/2006	6:55:00	ALG-15	EAC	TO	OCO	86	61,490
E019508435	2/4/2006	6:55:00	LGY-16	EAD	TF	OCO	23	18,745
E421253475	2/4/2006	7:00:00	EDG-16	ECA	TF	OCO	7	2,905
E435650963	2/4/2006	7:00:00	TLN-0098	ECD	TO	OPO	20,287	8,681,172
E900524189	2/4/2006	7:01:00	MWD-16	EBE	EF	OTF	2	2,038
E202702994	2/4/2006	7:02:00	BRW-16	EAC	TO	OTR	1,948	1,513,024
E176639084	2/4/2006	7:02:00	MAN-13	ECD	TF	OTR	500	756,500
E041415553	2/4/2006	7:03:00	SHD-18	EBJ	TO	OCO	3	237
E228918439	2/4/2006	7:03:00	FRA-15	ECD	TF	OCO	1,693	2,518,256
E195484544	2/4/2006	7:04:00	LYN-26	EAA	TF	OPO	200	218,200
E268287604	2/4/2006	7:05:00	EPO-15	ECD	TF	OCO	103	111,755
E912519517	2/4/2006	7:05:00	LOL-25	ECD	TF	OCO	776	1,963,280
E241498111	2/4/2006	7:05:00	KLA-15	EBF	EF	OTF	4	320

Qualifying Storm Event
February 4, 2006

Notification	Date	Time	Circuit	Area	Cause	Equipment	Cust Outs	Cust Mins
E924834012	2/4/2006	7:05:00	EPO-12	ECD	TF	OCO	221	224,536
E516435210	2/4/2006	7:06:00	MCW-15	ECE	TF	OCO	1,452	34,848
E943584925	2/4/2006	7:06:00	WAY-16	EBD	TO	OCO	26	37,804
10619652	2/4/2006	7:10:00	MAN-13	ECD	TO	OCO	50	71,450
E866909381	2/4/2006	7:10:00	ROL-13	EBJ	TF	OCO	272	42,160
E712036674	2/4/2006	7:11:00	HAN-16	EAA	TF	OCO	9	3,996
E061237561	2/4/2006	7:12:00	EDG-15	ECA	TF	OSV	1	718
10623091	2/4/2006	7:15:00	TLN-0109	ECE	TO	OCO	3,717	3,717
E923923240	2/4/2006	7:19:00	MHT-15	EBJ	TF	OSV	17	6,817
E628900344	2/4/2006	7:21:00	PET-13	EAC	TO	OUP	81	266,814
E584353536	2/4/2006	7:22:00	SIN-24	ECD	TO	OCO	866	1,179,894
E978756603	2/4/2006	7:23:00	SBE-26	EBE	TO	OCO	3	2,979
E905856006	2/4/2006	7:23:00	MWD-13	EBE	TO	OCO	7	7,679
E814185758	2/4/2006	7:26:00	SHE-26	ECE	TF	OHR	360	246,240
E924739935	2/4/2006	7:28:00	VIK-23	EAA	TO	OCO	25	12,050
E403990672	2/4/2006	7:29:00	MTV-16	EAC	TO	OTF	4	1,864
E991792499	2/4/2006	7:31:00	MER-13	EBE	TO	OCO	27	25,326
E650697109	2/4/2006	7:31:00	CHI-12	ECD	TO	OCO	12	19,068
E925576794	2/4/2006	7:33:00	ROS-15	EBD	EF	OTF	2	436
E763442168	2/4/2006	7:34:00	LON-23	ECC	TF	OCO	50	1,300
E593417575	2/4/2006	7:34:00	PAT-15	ECC	TO	OCO	4	3,464
E616398587	2/4/2006	7:35:00	RPT-23	ECD	TF	OCO	920	1,888,250
E295023103	2/4/2006	7:36:00	FNW-15	ECD	TF	OCO	1,577	241,281
E734363416	2/4/2006	7:37:00	SIN-25	ECD	TF	OCR	347	653,401
E953923853	2/4/2006	7:37:00	MIR-13	EBF	TO	OCO	28	30,044
E232894060	2/4/2006	7:37:00	LYN-13	EAA	TF	OFU	2	1,726
E788973184	2/4/2006	7:38:00	HAP-15	EAA	TF	OFU	2	3,464
E919279862	2/4/2006	7:44:00	GAG-13	EAC	EF	OCO	3	5,538
E649631166	2/4/2006	7:45:00	BHL-13	ECE	TO	OCO	34	98,430
E952588006	2/4/2006	7:46:00	SWA-15	EAD	TO	OFU	26	33,644
E287626986	2/4/2006	7:47:00	NOB-24	EBE	TO	OCO	14	11,942
E209397834	2/4/2006	7:48:00	EPO-16	ECD	TF	OPI	19	24,719
E323016526	2/4/2006	7:48:00	BUC-26	ECA	UN	OCO	3	1,077
E630467540	2/4/2006	7:48:00	HEM-17	ECA	TF	OCO	1,290	402,480
E755152060	2/4/2006	7:50:00	GRI-13	ECC	TO	OCO	50	23,150
E559954488	2/4/2006	7:51:00	LON-26	ECC	TF	OCO	117	1,053
E520166963	2/4/2006	7:51:00	LYN-17	EAA	TO	OCO	21	12,789
E912507790	2/4/2006	7:51:00	LGY-16	EAD	EF	OCO	23	17,457
E138252066	2/4/2006	7:53:00	LON-25	ECC	UN	OCO	959	6,713
E249579358	2/4/2006	7:53:00	MUR-13	ECE	TO	OCO	209	344,223
E978062904	2/4/2006	7:54:00	BCH-12	EAA	TO	OCO	35	86,380
E056763455	2/4/2006	7:56:00	CEK-16	ECE	TF	OFC	55	81,070
E699327222	2/4/2006	7:58:00	PIN-23	EBF	TO	OCO	1	1,007
E144818930	2/4/2006	7:58:00	PAN-12	EBJ	TF	OCO	384	208,128
E761665677	2/4/2006	7:59:00	SOO-27	EBJ	TF	OCO	1,976	873,240
E676956049	2/4/2006	7:59:00	RIT-16	EAC	TO	OFU	3	3,015
E420095871	2/4/2006	8:00:00	LMD-16	EBJ	TF	OCO	1	440
E628856629	2/4/2006	8:00:00	LAT-17	EBJ	TF	OCO	1,425	598,500
E702507177	2/4/2006	8:02:00	LYN-24	EAA	TO	OCO	118	49,324

Qualifying Storm Event
February 4, 2006

Notification	Date	Time	Circuit	Area	Cause	Equipment	Cust Outs	Cust Mins
E186226024	2/4/2006	8:02:00	LYN-24	EAA	TF	OCO	22	5,940
E108412392	2/4/2006	8:02:00	HAM-15	EAC	TF	OCO	4	2,432
E877842853	2/4/2006	8:04:00	ORT-22	ECA	UN	OCO	250	209,000
E993333106	2/4/2006	8:06:00	ROL-13	EBJ	TF	OCO	509	50,391
E384161753	2/4/2006	8:07:00	COT-16	EBD	TO	OCO	462	389,466
E782791603	2/4/2006	8:07:00	YEL-27	ECC	UN	OCO	88	60,104
E172585168	2/4/2006	8:07:00	PAN-15	EBJ	TF	OTR	95	34,960
E419860194	2/4/2006	8:08:00	BIG-15	EAC	TO	OSW	41	97,252
E286549819	2/4/2006	8:08:00	NNO-13	EBJ	TF	OFC	11	4,862
E729777825	2/4/2006	8:08:00	BEL-13	EBJ	TF	OCO	124	31,248
E025260107	2/4/2006	8:10:00	CUS-15	EAA	TF	OIN	350	35,350
E031403796	2/4/2006	8:10:00	LON-23	ECC	TO	OCO	53	46,375
E730916203	2/4/2006	8:11:00	KNM-27	EBD	EF	OPO	8	7,032
E527543979	2/4/2006	8:12:00	MCW-15	ECE	TF	OCO	500	339,000
E252189481	2/4/2006	8:13:00	SOO-23	EBJ	TF	OFU	38	8,246
E491930796	2/4/2006	8:13:00	RDO-16	EBJ	TF	OFU	27	9,909
E457471556	2/4/2006	8:13:00	RHO-16	ECA	UN	OCO	2,328	516,816
E999646220	2/4/2006	8:13:00	LTA-18	ECA	TF	OPO	125	88,875
E853063883	2/4/2006	8:14:00	BTR-22	EBD	TO	OCO	102	159,222
E099038565	2/4/2006	8:14:00	CUS-13	EAA	TO	OCO	2	1,172
E785973595	2/4/2006	8:15:00	ING-13	EBD	TO	OCO	688	464,400
E139303363	2/4/2006	8:15:00	FRG-15	ECC	TF	OCO	12	8,628
E318426049	2/4/2006	8:16:00	NHL-17	EBD	TO	OCO	2	898
E937462893	2/4/2006	8:16:00	BIG-16	EAC	TO	OFU	500	105,000
E411299161	2/4/2006	8:18:00	HEM-15	ECA	UN	OFC	9	6,462
E036886817	2/4/2006	8:19:00	BTN-37	EAC	TF	OCR	1	1,991
E166635265	2/4/2006	8:20:00	NUG-25	EAA	TO	OCO	2	1,520
E059927487	2/4/2006	8:20:00	TRA-25	ECE	TO	OCO	5	9,800
E164017812	2/4/2006	8:20:00	ALG-15	EAA	TO	OCO	60	12,900
E331008490	2/4/2006	8:21:00	PHA-17	EBE	TO	OCO	155	89,745
E668936271	2/4/2006	8:22:00	WIS-14	EBF	EF	USV	4	4,832
E551168305	2/4/2006	8:23:00	SEQ-17	EBJ	EF	OPO	3	1,296
E487068698	2/4/2006	8:24:00	SKE-22	ECE	TO	OCO	1,529	3,195,224
E144039928	2/4/2006	8:26:00	SKE-23	ECE	TO	OPO	358	699,532
E754505790	2/4/2006	8:26:00	BDI-12	EBI	TF	OCO	82	21,238
E567268461	2/4/2006	8:26:00	SKE-26	ECE	TF	OCO	2,388	4,429,752
E020807513	2/4/2006	8:27:00	MIL-23	ECE	TF	OCO	12	49,356
E311305752	2/4/2006	8:27:00	LGY-16	EAD	EF	OCO	13	13,104
E873253270	2/4/2006	8:28:00	HKX-13	EAC	TF	OCO	1	364
E295014141	2/4/2006	8:28:00	SKI-13	EBD	TO	OCO	902	401,390
E962283032	2/4/2006	8:29:00	HWD-23	EBD	TO	OCO	543	92,310
E924774423	2/4/2006	8:29:00	BRE-36	ECD	TF	OCO	17	12,784
E048154074	2/4/2006	8:31:00	AVO-17	EBD	TO	OCO	38	46,702
E462182372	2/4/2006	8:31:00	COT-17	EBD	TO	OCO	366	178,242
E011079993	2/4/2006	8:32:00	NRU-25	EBE	TO	OCO	16	19,888
E641603545	2/4/2006	8:32:00	SIL-16	ECE	TO	OCO	38	66,614
E133782866	2/4/2006	8:33:00	LTA-17	ECA	UN	OCO	981	305,091
E394435836	2/4/2006	8:33:00	HEM-13	ECA	UN	OCO	5	90
E016997980	2/4/2006	8:34:00	HEM-13	ECA	TF	OPO	544	373,184

Qualifying Storm Event
February 4, 2006

Notification	Date	Time	Circuit	Area	Cause	Equipment	Cust Outs	Cust Mins
E198498621	2/4/2006	8:34:00	OSC-22	EBI	TF	OCO	1,232	142,912
E466398378	2/4/2006	8:34:00	PHA-13	EBE	TO	OCO	4	2,264
E396508316	2/4/2006	8:36:00	ALG-12	EAC	TO	OCO	17	18,598
E369797867	2/4/2006	8:36:00	FCH-24	ECA	TF	OPO	1	925
E234485671	2/4/2006	8:36:00	SCH-13	EAA	TF	OCO	7	18,963
E175253583	2/4/2006	8:36:00	SCH-13	EAA	TF	OPO	9	25,299
E145033926	2/4/2006	8:37:00	OVE-13	EBE	TO	OCO	11	803
E331075241	2/4/2006	8:37:00	SHA-13	ECA	TO	OPO	150	135,900
E138521514	2/4/2006	8:38:00	ROL-15	EBJ	TO	OCO	904	83,168
E135967722	2/4/2006	8:38:00	RED-14	EBD	TO	OCO	14	4,088
E518062950	2/4/2006	8:41:00	MCK-16	EAA	TF	OCO	19	8,170
E448322868	2/4/2006	8:42:00	NBO-26	EBD	TO	OCO	710	118,570
E216790027	2/4/2006	8:42:00	ORT-23	ECA	UN	OCO	2	1,014
E207375143	2/4/2006	8:43:00	KWH-22	EBE	TO	OCO	148	55,796
E458867641	2/4/2006	8:43:00	SKE-22	ECE	TF	OCO	42	102,354
E555360090	2/4/2006	8:45:00	BON-13	ECA	UN	OCO	1,218	302,064
E749343436	2/4/2006	8:46:00	KWH-25	EBD	TO	OCO	11	4,774
E878125543	2/4/2006	8:46:00	RAI-12	ECC	TF	OCO	57	35,568
E300933901	2/4/2006	8:46:00	LAB-25	EAA	EF	OCN	124	306,776
E251354462	2/4/2006	8:47:00	HAP-16	EAA	TO	OCO	204	276,012
E435481654	2/4/2006	8:47:00	MER-16	EBE	EF	OTF	3	2,364
E044128276	2/4/2006	8:49:00	CLY-25	EBE	TF	OCO	3	183
E002534812	2/4/2006	8:49:00	VIS-23	EAA	TO	OCO	152	111,112
E033560222	2/4/2006	8:51:00	HAP-13	EAA	TF	OTF	3	4,362
E262523898	2/4/2006	8:52:00	ROS-22	EBD	TO	OCO	5	695
E506420958	2/4/2006	8:54:00	DGR-15	ECA	UN	OCO	90	43,290
E076010244	2/4/2006	8:54:00	SKE-22	ECE	TO	OCO	114	260,604
E706304177	2/4/2006	8:55:00	ZEN-26	EBJ	TF	OCO	6	1,830
E127290656	2/4/2006	8:58:00	CAR-15	EAA	EF	OCR	1	687
E101827152	2/4/2006	8:58:00	HAN-13	EAA	TF	OFU	2	1,864
E506950985	2/4/2006	8:58:00	PIK-21	EBF	TO	OCO	13	12,896
E814695917	2/4/2006	8:59:00	LYN-23	EAA	TO	OCO	29	36,859
E058511545	2/4/2006	9:02:00	ROL-17	EBJ	TF	OCO	54	18,522
E101439553	2/4/2006	9:02:00	CHI-12	ECD	TO	OTR	5	18,290
E186227897	2/4/2006	9:06:00	MLK-12	EBE	EF	OCO	5	7,020
E353908910	2/4/2006	9:06:00	BLA-13	EAA	TF	OPO	52	102,648
E697388292	2/4/2006	9:09:00	VAS-13	ECD	TF	OCO	1	1,941
E847607660	2/4/2006	9:14:00	FAL-15	EBF	TO	OCO	13	21,658
E453894812	2/4/2006	9:14:00	LYN-14	EAA	TO	OCO	18	12,348
E707530364	2/4/2006	9:15:00	KWH-26	EBD	EF	OTF	4	1,620
E693227277	2/4/2006	9:16:00	TOL-15	EBD	EF	OCO	2	1,932
E850018514	2/4/2006	9:18:00	BIG-12	EAC	EF	OCO	107	68,694
E183493400	2/4/2006	9:19:00	LOC-23	EBE	EF	OFC	23	33,373
E773212149	2/4/2006	9:21:00	BLA-13	EAA	EF	OCO	29	27,115
E584175356	2/4/2006	9:21:00	SCH-13	EAA	UN	OCO	2	3,298
E182019178	2/4/2006	9:21:00	BLS-22	EAA	TF	OSV	2	1,220
E545746081	2/4/2006	9:22:00	MCK-15	EAA	TF	OCO	29	44,602
E001828347	2/4/2006	9:25:00	BCH-16	EAA	TO	OFU	2	980
E618559965	2/4/2006	9:25:00	LWS-14	EBJ	TF	OFC	24	2,952

Qualifying Storm Event
February 4, 2006

Notification	Date	Time	Circuit	Area	Cause	Equipment	Cust Outs	Cust Mins
E859951756	2/4/2006	9:26:00	TLN-0075	ECD	TF	OPO	12,975	455,263
E872851926	2/4/2006	9:27:00	PTR-14	EAA	TO	OCO	2	3,006
E765963801	2/4/2006	9:30:00	LWS-14	EBI	TF	OFC	8	944
E533826662	2/4/2006	9:31:00	WOO-26	ECA	TF	OCO	2	258
E870340684	2/4/2006	9:32:00	VIS-23	EAA	TO	OCO	15	12,570
E598908184	2/4/2006	9:33:00	ROC-16	ECC	TF	OCO	41	31,857
E859358203	2/4/2006	9:36:00	LAC-17	ECC	CP	OPO	134	32,696
E031600521	2/4/2006	9:36:00	LAB-23	EAA	TF	OPO	5	15,545
E589943491	2/4/2006	9:37:00	FLD-13	EAD	TO	OCO	1,561	878,843
E428172303	2/4/2006	9:41:00	RPT-15	ECD	TF	OCO	16	11,824
E838622357	2/4/2006	9:41:00	NOR-23	EBD	TO	OCO	82	136,940
E694348608	2/4/2006	9:42:00	BTN-36	EAC	TO	OCO	1	858
E688942412	2/4/2006	9:42:00	BAK-26	EAA	EF	OCO	2	3,536
E832071747	2/4/2006	9:43:00	KNM-23	EBD	TO	OPO	60	88,620
E980228845	2/4/2006	9:43:00	SLA-16	EAA	TF	OCO	1	887
E774671710	2/4/2006	9:44:00	NBE-16	EBF	TO	OCO	17	18,972
E901858810	2/4/2006	9:45:00	LMC-25	EBF	TO	OCO	18	6,516
E096972550	2/4/2006	9:47:00	WAY-13	EBD	TO	OCO	17	19,261
E690054771	2/4/2006	9:49:00	ELD-27	ECC	TF	OCO	29	11,716
E456627602	2/4/2006	9:50:00	CLY-23	EBE	TO	OCO	3	2,085
E115035697	2/4/2006	9:50:00	AIR-23	ECC	UN	OSW	310	151,900
E653053889	2/4/2006	9:51:00	SCH-15	EAA	TO	OCO	1	834
E101452282	2/4/2006	9:51:00	NOR-25	EBD	TO	OCO	34	34,986
E710671946	2/4/2006	9:51:00	VAS-22	EBL	TF	OCO	10	12,090
E125467163	2/4/2006	9:52:00	BLA-13	EAA	TO	OCO	15	15,645
E766400680	2/4/2006	9:53:00	NNO-15	EBJ	TF	OFC	25	8,425
E562271890	2/4/2006	9:54:00	TAN-13	ECC	TF	OSV	3	1,158
E246052283	2/4/2006	9:55:00	VWY-13	EAA	UN	OCE	13	34,775
E631517046	2/4/2006	9:57:00	SBE-25	EBE	UN	OCO	1,330	928,340
E353089281	2/4/2006	9:58:00	LWS-16	EBI	TF	OCO	70	12,040
E076664615	2/4/2006	10:01:00	SLA-17	EAA	TO	OCO	13	21,827
E789595374	2/4/2006	10:02:00	GRV-13	ECA	TF	OCO	1	58
E714476100	2/4/2006	10:02:00	HIG-13	EBE	EF	OFU	9	14,697
E041991663	2/4/2006	10:04:00	LMC-27	EBF	TO	OCO	53	14,946
E278220055	2/4/2006	10:06:00	LMC-23	EBF	TF	OCO	5	5,370
E382545666	2/4/2006	10:06:00	KLA-17	EBF	TF	OCO	2	1,428
E442946716	2/4/2006	10:08:00	LWS-16	EBJ	TF	OCO	23	5,336
E101529980	2/4/2006	10:08:00	MED-36	EBE	TO	OCO	18	13,392
E110754763	2/4/2006	10:08:00	TRA-23	ECE	TO	OCR	278	521,436
E935685428	2/4/2006	10:08:00	VIS-25	EAA	TO	OCO	96	85,632
E764590519	2/4/2006	10:09:00	CPV-12	EAD	TO	OCO	945	671,895
E652440179	2/4/2006	10:10:00	VIS-22	EAA	TF	OFU	24	15,600
E711676424	2/4/2006	10:10:00	CPV-13	EAD	TO	OCO	540	383,400
E539020571	2/4/2006	10:11:00	IRO-15	ECF	TO	OCO	20	71,700
E655458442	2/4/2006	10:11:00	KEA-15	ECF	EF	OFC	8	10,312
E183915613	2/4/2006	10:12:00	PGA-13	ECE	TF	OCO	3	11,934
E781107540	2/4/2006	10:12:00	CHI-13	ECD	TO	OPO	10	24,480
E974646870	2/4/2006	10:13:00	FRU-26	ECA	PO	OCO	1	689
E166690904	2/4/2006	10:14:00	PAT-17	ECC	TF	OCO	105	64,365

Qualifying Storm Event
February 4, 2006

Notification	Date	Time	Circuit	Area	Cause	Equipment	Cust Outs	Cust Mins
E160296369	2/4/2006	10:14:00	SOO-25	EBI	TF	OPO	220	175,780
E696299279	2/4/2006	10:15:00	HLC-26	EAD	TF	OFU	1	975
E297041834	2/4/2006	10:19:00	WOO-25	ECA	TF	OCO	1	934
E392570546	2/4/2006	10:20:00	PLG-17	ECC	TO	OCO	1,044	494,856
E347848903	2/4/2006	10:20:00	EDG-13	ECA	UN	OFC	20	9,600
E955420212	2/4/2006	10:24:00	CHI-12	ECE	TO	OCO	1	1,216
E446485613	2/4/2006	10:27:00	GRV-15	ECA	TF	OPO	17	578
E302438741	2/4/2006	10:28:00	NUG-25	EAA	TF	OCO	10	15,020
E855847326	2/4/2006	10:37:00	SCH-13	EAA	EF	OFC	1	1,523
E904394617	2/4/2006	10:39:00	LON-25	ECC	TO	OCO	13	4,173
E095690035	2/4/2006	10:44:00	BLA-13	EAA	TF	OFU	16	24,736
E828854210	2/4/2006	10:45:00	LLT-16	EBD	TO	OCO	188	301,740
E364730258	2/4/2006	10:51:00	ALG-15	EAA	TO	OCO	6	11,034
E609132433	2/4/2006	10:51:00	CED-17	ECA	UN	OFC	500	164,500
E497888968	2/4/2006	10:54:00	BRI-14	EAA	TF	OFU	5	3,180
E506499848	2/4/2006	10:54:00	CAR-16	EAA	EF	OFC	9	5,319
E847077556	2/4/2006	10:57:00	WOB-25	EAA	TF	OFU	9	2,322
E767719753	2/4/2006	11:01:00	VIK-25	EAA	TF	OCO	38	35,758
E799042881	2/4/2006	11:03:00	LYN-23	EAA	TO	OCO	5	5,235
E445110633	2/4/2006	11:05:00	MER-15	EBE	TF	OFC	3	3,105
E730985161	2/4/2006	11:06:00	BHL-15	ECE	TF	OCO	1	1,914
E030124854	2/4/2006	11:19:00	FRU-22	ECA	TF	OCO	1	242
E469993705	2/4/2006	11:20:00	NLM-13	EAC	EF	UPT	42	70,350
E291721996	2/4/2006	11:23:00	MKI-14	ECC	TF	OSV	11	4,587
E780282288	2/4/2006	11:30:00	ELD-23	ECC	TF	OPO	3	5,040
E536482394	2/4/2006	11:30:00	OVE-15	EBE	EF	OCO	3	4,230
E830048178	2/4/2006	11:31:00	SHE-15	ECE	TO	OCO	4	12,244
E618820141	2/4/2006	11:35:00	KCR-17	EBJ	TF	OCO	51	3,570
E189116581	2/4/2006	11:36:00	PGA-12	ECE	TO	OCO	57	127,998
E950209306	2/4/2006	11:39:00	CWD-22	EBD	TO	OCO	897	368,667
E235833984	2/4/2006	11:40:00	NBE-13	EBF	TO	OCO	4	2,860
E145830379	2/4/2006	11:48:00	CWD-24	EBD	TO	OCO	19	9,728
E523097635	2/4/2006	11:49:00	POU-16	ECE	TF	OCO	14	32,354
E983889536	2/4/2006	11:53:00	CHR-25	ECE	TO	OCO	604	664,400
E980982739	2/4/2006	11:58:00	RPT-17	ECD	TF	OSV	72	185,904
E698687500	2/4/2006	11:59:00	WOB-23	EAA	TF	OCO	10	7,060
E609170884	2/4/2006	12:05:00	NUG-25	EAA	TF	OPO	14	38,150
E996975248	2/4/2006	12:05:00	NBO-26	EBD	TO	OCO	11	17,347
E743053405	2/4/2006	12:08:00	LOL-23	ECD	TF	OCO	80	133,760
E473271566	2/4/2006	12:12:00	SME-12	EBE	EF	UTR	166	286,848
E397371819	2/4/2006	12:13:00	GBK-13	EAD	EF	OTF	4	10,912
E838424791	2/4/2006	12:18:00	LYN-23	EAA	TO	OCO	27	28,944
E829609217	2/4/2006	12:22:00	CHI-13	ECD	TO	OCO	30	31,710
E082279384	2/4/2006	12:24:00	OSC-22	EBI	TF	OTF	11	1,221
E405981865	2/4/2006	12:24:00	CEK-16	ECD	TO	OCO	6	3,096
E557881109	2/4/2006	12:29:00	LLT-15	EBD	EF	OTF	2	3,072
E041871161	2/4/2006	12:30:00	JUA-16	EBD	EF	UTC	12	5,640
E259655167	2/4/2006	12:31:00	PLG-13	ECC	TF	OPO	15	11,685
E568943304	2/4/2006	12:34:00	SLA-15	EAA	TF	OCO	3	3,738

Qualifying Storm Event
February 4, 2006

Notification	Date	Time	Circuit	Area	Cause	Equipment	Cust Outs	Cust Mins
E884881054	2/4/2006	12:40:00	SEH-12	EAA	EF	OCN	70	37,135
E711962935	2/4/2006	12:41:00	LON-26	ECC	UN	OCO	35	40,355
E887371851	2/4/2006	12:45:00	CHI-12	ECD	TF	OCO	94	305,688
E836925532	2/4/2006	12:47:00	GRA-15	EBJ	TF	OTF	10	1,730
E746925687	2/4/2006	12:48:00	PIK-24	EBF	TF	OCO	6	4,260
E165862577	2/4/2006	12:51:00	BTR-22	EBE	TO	OCO	7	9,023
E465036508	2/4/2006	12:57:00	FRG-26	ECC	UN	OCO	30	11,790
E083043407	2/4/2006	12:58:00	PRE-12	EBE	TO	OCO	12	2,832
E875070538	2/4/2006	12:59:00	PET-12	EAC	TO	OPO	5	15,095
E141545021	2/4/2006	12:59:00	UHL-22	EBD	TO	OCO	63	5,229
E319811242	2/4/2006	13:00:00	SAH-16	EBD	TO	OCO	316	80,896
E443522637	2/4/2006	13:00:00	PLA-21	EBD	TO	OCO	221	132,600
E427436688	2/4/2006	13:01:00	KLA-15	EBD	TO	OCO	98	61,642
E193735921	2/4/2006	13:01:00	SAH-17	EBD	TO	OCO	57	14,535
E514201347	2/4/2006	13:01:00	UHL-21	EBD	TO	OCO	62	11,098
E781194947	2/4/2006	13:02:00	UHL-25	EBD	TO	OCO	248	51,584
E202151483	2/4/2006	13:02:00	RED-25	EBD	TF	OCO	4,230	105,150
E294700727	2/4/2006	13:04:00	HAP-16	EAA	TF	OCO	293	333,727
E382368874	2/4/2006	13:06:00	MHT-13	EBJ	TF	OCO	523	67,467
E931137994	2/4/2006	13:08:00	ROS-21	EBD	TO	OCO	9	3,492
E949749468	2/4/2006	13:08:00	HEM-17	ECA	TF	OFC	84	2,940
E015346708	2/4/2006	13:09:00	CHI-13	ECD	TF	OCO	50	40,950
E334976716	2/4/2006	13:22:00	LUH-14	ECC	TO	OCO	1	1,055
E589671291	2/4/2006	13:25:00	PGA-13	ECE	TO	OCO	734	2,624,050
E965586516	2/4/2006	13:27:00	FNW-17	ECD	TO	OFC	7	20,776
E966639535	2/4/2006	13:29:00	ALG-15	EAA	TO	OCO	6	2,436
E707229377	2/4/2006	13:33:00	SPI-16	EBD	TO	OCO	1,018	404,146
E083129431	2/4/2006	13:38:00	CAM-25	EBJ	TF	OCO	32	2,624
E423655860	2/4/2006	13:39:00	BON-17	ECA	TF	OSV	1	73
E074430027	2/4/2006	13:44:00	SKE-23	ECE	TF	OFC	23	62,468
E434122697	2/4/2006	13:46:00	LON-22	ECC	TO	OTR	2	1,728
E497024251	2/4/2006	13:46:00	MIR-17	EBF	TF	OCO	22	44,792
E774089324	2/4/2006	13:51:00	HEM-13	ECA	TF	OCO	450	117,900
E851090087	2/4/2006	13:55:00	CHI-12	ECD	TF	OSV	1	5,718
E166598301	2/4/2006	13:57:00	SPA-17	ECA	UN	OSV	1	173
E675215564	2/4/2006	14:03:00	SPA-16	ECA	UN	OCO	1	164
E426054686	2/4/2006	14:08:00	LTA-17	EBI	TF	OCO	5	960
E654860557	2/4/2006	14:12:00	MST-23	EBI	TF	OSV	3	234
E505778772	2/4/2006	14:15:00	LTA-17	ECA	UN	OCO	1	105
E918605180	2/4/2006	14:19:00	SME-13	EBE	LI	OAR	5	1,775
E925452311	2/4/2006	14:26:00	KCR-17	EBJ	TF	OCO	3	372
E484243237	2/4/2006	14:33:00	FRG-16	ECC	TF	OCO	80	15,760
E745711098	2/4/2006	14:40:00	GRV-12	ECA	TF	OCO	842	87,568
E730396526	2/4/2006	14:42:00	RDO-16	EBJ	TF	OFU	5	390
E762282021	2/4/2006	14:47:00	HAZ-15	EBE	TF	OSV	7	5,831
E578720424	2/4/2006	14:59:00	VIS-26	EAA	TO	OCO	3	543
E967724151	2/4/2006	15:02:00	SOO-23	EBJ	TF	OFU	7	616
E175645052	2/4/2006	15:09:00	CED-13	ECA	TF	OPO	2	2,542
E152021736	2/4/2006	15:10:00	STW-13	ECA	TF	OCO	30	16,830

Qualifying Storm Event
February 4, 2006

Notification	Date	Time	Circuit	Area	Cause	Equipment	Cust Outs	Cust Mins
E329949500	2/4/2006	15:13:00	PTL-13	ECD	TF	OCO	1	958
E828610027	2/4/2006	15:20:00	LYN-26	EAA	TO	OCO	15	2,400
E155097441	2/4/2006	15:50:00	NBO-22	EBD	TO	OCO	130	32,500
E518661112	2/4/2006	15:52:00	LMC-25	EBF	TF	OSV	2	376
E951233005	2/4/2006	15:56:00	FAB-15	EAD	TO	OPO	100	199,900
E470926665	2/4/2006	15:57:00	BON-16	ECA	TF	OTF	4	464
E315175456	2/4/2006	16:00:00	POU-16	ECE	TF	OCO	47	29,610
E813475357	2/4/2006	16:01:00	HOB-15	EBI	TF	OCO	4	476
E119937990	2/4/2006	16:03:00	PRI-21	ECC	TF	OTF	2	374
E937307130	2/4/2006	16:03:00	CAS-16	EBH	TO	OCO	10	11,541
E106112860	2/4/2006	16:09:00	KEN-12	EAA	TF	OCO	6	1,926
E205982499	2/4/2006	16:17:00	MTV-16	EAC	TF	OCO	1	63
E458709734	2/4/2006	16:20:00	CED-17	ECA	TF	OPO	96	95,040
E198349162	2/4/2006	16:23:00	KWH-22	EBD	TO	OCO	14	5,138
10623311	2/4/2006	16:30:00	WIN-13	ECE	TO	OCO	50	55,650
E404128651	2/4/2006	16:31:00	KNM-26	EBD	TF	OCO	33	36,432
E924746372	2/4/2006	16:37:00	BDI-16	EBI	TF	OSV	2	376
E470966085	2/4/2006	16:40:00	HAM-13	EAC	TO	OFU	7	630
E326534156	2/4/2006	16:40:00	HYA-15	EBF	AO	OIN	1	965
E900181179	2/4/2006	16:42:00	PRE-27	EBE	TO	OCN	6	4,428
E763672406	2/4/2006	16:45:00	HAZ-12	EBE	TO	OCO	11	220
E331688901	2/4/2006	16:54:00	DUV-12	EBD	EF	OFU	89	32,752
E014994158	2/4/2006	16:58:00	OSC-22	EBI	TF	OFU	1	232
E676270978	2/4/2006	17:06:00	NBE-12	EBF	TF	OSV	5	1,740
10622958	2/4/2006	17:10:00	MAN-12	ECD	TO	OCO	300	7,800
E547764843	2/4/2006	17:12:00	RHO-17	ECA	TF	OCO	15	2,175
E588323963	2/4/2006	17:13:00	SUM-15	EAC	TO	OFU	26	4,342
E879482541	2/4/2006	17:14:00	CED-17	ECA	TF	OPO	8	7,488
E420526995	2/4/2006	17:18:00	MVW-16	EBJ	TF	OTF	8	816
E460809533	2/4/2006	17:29:00	HKX-13	EAC	TO	OFU	1	961
E107907933	2/4/2006	17:30:00	POU-13	ECE	TF	OTF	1	990
E587997980	2/4/2006	17:34:00	MHT-15	EBJ	TF	OFU	2	112
E626036960	2/4/2006	17:36:00	POU-16	ECE	TF	OCO	3	4,032
E504033637	2/4/2006	17:36:00	GWR-13	EBI	TF	OCO	40	6,560
E049294349	2/4/2006	17:41:00	VIK-23	EAA	TF	OFU	11	2,409
E668106810	2/4/2006	17:45:00	MOT-14	ECC	TF	OCO	5	3,125
E335754249	2/4/2006	17:50:00	BRI-15	EAA	EF	OJU	34	26,350
E874650229	2/4/2006	17:51:00	KAP-16	ECA	UN	OFC	2	300
E736505498	2/4/2006	17:59:00	LLT-17	EBD	TF	OTF	2	198
E823383078	2/4/2006	18:04:00	PEA-17	EBJ	TF	OTF	1	116
E529169781	2/4/2006	18:12:00	TRA-26	ECE	TF	OCO	5	12,840
E492668098	2/4/2006	18:16:00	PHA-17	EBE	EF	OJU	21	16,674
E338462560	2/4/2006	18:19:00	HEM-13	ECA	UN	OCO	50	7,000
E902876847	2/4/2006	18:20:00	HOB-15	EBI	TF	OTF	4	460
E931676206	2/4/2006	18:21:00	PHA-13	EBE	TO	OCO	9	1,431
E723224099	2/4/2006	18:26:00	HAN-16	EAA	TF	OCO	5	920
E104068696	2/4/2006	18:37:00	LYN-24	EAA	TO	OPO	6	2,298
E091867266	2/4/2006	18:39:00	LYN-24	EAA	TO	OPO	3	1,143
E903218683	2/4/2006	18:40:00	KWH-26	EBD	TO	OCO	4	920

Qualifying Storm Event
February 4, 2006

Notification	Date	Time	Circuit	Area	Cause	Equipment	Cust Outs	Cust Mins
E405142016	2/4/2006	19:02:00	KLA-17	EBD	TO	OCO	9	2,412
E174679821	2/4/2006	19:12:00	CUS-13	EAA	TF	OCO	32	66,752
E061296862	2/4/2006	19:13:00	NBE-15	EBF	TF	OCO	15	14,205
E000367246	2/4/2006	19:14:00	HLC-23	EAD	TO	OTR	7	12,222
E700851164	2/4/2006	19:15:00	ALG-15	EAC	TF	OCO	7	4,277
E834544273	2/4/2006	19:18:00	SCH-15	EAA	TO	OPO	18	5,436
E495391002	2/4/2006	19:19:00	ELD-25	ECC	TF	OCO	13	2,353
E537647757	2/4/2006	19:22:00	FAL-13	EBF	TF	OCO	2	1,056
E781969747	2/4/2006	19:23:00	MCW-15	ECE	TO	OCO	1,483	45,781
E883097099	2/4/2006	19:24:00	FLD-13	EAD	TF	OCO	17	19,822
E156892804	2/4/2006	19:25:00	CWD-22	EBD	EF	OJU	11	605
E608327422	2/4/2006	19:26:00	WIN-13	ECE	UN	OPO	80	238,960
E153583858	2/4/2006	19:27:00	SAH-15	EBD	TO	OCO	6	4,308
E863349692	2/4/2006	19:29:00	WIN-15	ECE	TO	OCR	308	917,840
E069679537	2/4/2006	19:31:00	CRE-16	EAD	TF	OCO	42	58,758
E050169784	2/4/2006	19:32:00	GRI-15	ECC	TF	OCO	11	6,633
E707567153	2/4/2006	19:38:00	WLS-16	EAC	TF	OFU	18	5,058
E503500476	2/4/2006	19:41:00	BLA-13	EAA	EF	OFC	13	9,217
E360187016	2/4/2006	19:41:00	SOO-23	EBI	TF	OTF	6	648
E117645668	2/4/2006	19:52:00	SIL-16	ECD	TF	OCO	117	125,541
E224079536	2/4/2006	19:57:00	SOO-23	EBJ	TF	OCO	20	460
E795265620	2/4/2006	20:14:00	SHE-26	ECE	TO	OCO	35	61,810
E607284846	2/4/2006	20:31:00	SUM-15	EAC	TO	OCO	52	91,728
E476452111	2/4/2006	20:35:00	PGA-15	ECF	TF	OCO	276	490,550
E489320570	2/4/2006	21:02:00	GRV-15	ECA	UN	OFC	1	25
E393764920	2/4/2006	21:11:00	LAC-17	ECC	TF	OTF	4	196
E515247247	2/4/2006	21:18:00	VAS-13	EBL	TO	OCO	21	14,742
E585288347	2/4/2006	21:28:00	ING-15	EBD	EF	OJU	31	15,097
E743400717	2/4/2006	21:32:00	KCR-16	EBJ	TF	OCO	1	63
E540394409	2/4/2006	21:32:00	JUA-14	EBD	TF	OCO	22	11,044
E181554191	2/4/2006	21:36:00	BRO-15	EAD	TF	OCO	14	18,452
E160126361	2/4/2006	21:42:00	SME-13	EBE	EF	UTR	6	5,418
10623268	2/4/2006	21:42:00	PMA-16	ECE	TO	OCO	100	103,330
E972521503	2/4/2006	21:45:00	SIL-13	ECE	TF	OCO	16	10,320
E652418561	2/4/2006	21:46:00	HOU-25	EBD	TO	OCO	8	1,408
E295606615	2/4/2006	22:00:00	PMA-15	ECE	TF	OCO	250	724,250
E169726092	2/4/2006	22:06:00	KEN-12	EAA	TF	OCO	2	1,158
E231362765	2/4/2006	22:11:00	GRI-16	ECC	TF	OFC	364	231,868
E201920865	2/4/2006	22:25:00	NBO-22	EBD	UN	OCO	28	17,024
E740932760	2/4/2006	22:25:00	MED-37	EBE	TO	OCO	4	2,320
E170919475	2/4/2006	22:28:00	FNW-15	ECD	TF	OCO	44	33,088
E658258149	2/4/2006	22:36:00	COT-16	EBD	TO	OCO	230	140,070
E466694135	2/4/2006	22:38:00	LGY-12	EAD	TF	OCO	5	4,435
E816422811	2/4/2006	22:43:00	FNW-15	ECD	TO	OCO	47	45,919
E703977235	2/4/2006	22:49:00	PIN-26	EBF	EF	OCO	41	34,030
E585360245	2/4/2006	22:51:00	FLD-15	EAD	TO	OHR	300	78,600
E022683889	2/4/2006	23:06:00	DUV-12	EBD	TF	OCO	1	628
E663588294	2/4/2006	23:16:00	KWH-22	EBD	EF	OTF	28	15,428
E313394214	2/4/2006	23:19:00	SME-15	EBE	TO	OCO	6	2,016

Qualifying Storm Event
February 4, 2006

Notification	Date	Time	Circuit	Area	Cause	Equipment	Cust Outs	Cust Mins
E647018004	2/4/2006	23:20:00	LGY-15	EAD	TF	OCO	43	95,890
E739714303	2/4/2006	23:35:00	EGT-12	EBE	TO	OCO	6	2,400

IEEE-1366 Data / February 5th

Notification	Date	Time	Circuit	Area	Cause	Equipment	Cust Outs	Cust Mins
E121596934	2/5/2006	0:01:00	CHR-22	ECE	TO	OCO	1,133	1,698,367
E324248741	2/5/2006	0:01:00	EPO-12	ECD	TF	OCO	222	322,848
E741647148	2/5/2006	0:02:00	LMC-27	EBF	PO	OSV	1	674
E077344399	2/5/2006	0:13:00	SBE-23	EBE	TO	OPO	20	17,740
E666229012	2/5/2006	0:25:00	VWY-12	EAA	TO	OCO	8	4,760
E479169090	2/5/2006	0:51:00	COL-25	EBE	EF	USV	1	209
E849816694	2/5/2006	0:56:00	CRE-13	EAD	EF	OFC	5	4,615
E096128236	2/5/2006	1:00:00	POU-15	ECE	TF	OCO	539	60,839
E237341141	2/5/2006	1:21:00	NBE-13	EBF	EF	OFC	6	2,850
E149142710	2/5/2006	1:27:00	WLS-16	EAC	TO	OCO	6	7,158
E402366357	2/5/2006	1:30:00	CHA-13	ECC	UN	OCO	3	1,278
E821040608	2/5/2006	1:52:00	AIR-23	ECC	UN	OCO	1	33
E071309329	2/5/2006	1:56:00	LGY-12	EAD	TO	OFU	2	608
E032954854	2/5/2006	1:57:00	ROC-16	ECC	TF	OCO	8	704
E060033049	2/5/2006	2:07:00	POU-15	ECE	TO	OCO	26	26,182
E341484691	2/5/2006	2:11:00	CLA-13	EBI	TF	OCO	2	7,582
E916396363	2/5/2006	2:25:00	GRI-13	ECC	UN	OCO	6	1,962
E282545604	2/5/2006	2:32:00	CPV-15	EAD	TF	OHR	682	146,630
E488701222	2/5/2006	2:35:00	PMA-15	ECE	TO	OCO	52	131,092
E801492912	2/5/2006	2:36:00	CEK-15	ECE	TF	OCO	27	27,135
E033670195	2/5/2006	3:10:00	LYN-17	EAA	TO	OCO	8	2,080
E358139080	2/5/2006	3:18:00	MUR-16	ECE	TO	OCO	71	176,080
E994060797	2/5/2006	3:33:00	FRG-15	ECC	TF	OTF	3	366
E834767925	2/5/2006	4:07:00	WOO-27	ECA	TF	OCO	1	158
E143620556	2/5/2006	4:16:00	LOL-22	ECD	TO	OFU	9	5,976
E403498173	2/5/2006	4:18:00	LON-23	ECC	TF	OCO	41	18,532
E222781005	2/5/2006	4:24:00	IRO-16	ECF	TF	PTF	3	2,448
E192735461	2/5/2006	4:31:00	EPO-15	ECD	TO	OFU	60	29,580
E131587568	2/5/2006	5:05:00	LAB-25	EAA	TO	OCO	1	1,270
E343806036	2/5/2006	5:06:00	ELD-25	ECC	EF	UTR	36	19,884
E081395234	2/5/2006	5:22:00	QUI-25	ECF	TO	OCO	13	2,574
E017362924	2/5/2006	5:38:00	ALG-15	EAC	TO	OCO	18	14,436
E796039338	2/5/2006	5:55:00	FLD-15	EAD	TO	OCO	70	122,150
E617982120	2/5/2006	6:04:00	SME-15	EBE	TO	OCO	2	52
E157389473	2/5/2006	6:17:00	HEM-13	ECA	TF	OSV	1	138
E509860259	2/5/2006	6:22:00	ROL-15	EBJ	TO	OTF	1	64
E142410169	2/5/2006	6:25:00	CPV-15	EAD	TF	OCO	316	90,376
E420804198	2/5/2006	6:27:00	PLG-13	ECC	TF	OCO	2	86
E328702833	2/5/2006	6:30:00	ROC-16	ECC	TF	OTR	6	3,180
E970388433	2/5/2006	6:31:00	CHR-25	ECE	TF	OCO	184	288,696
E462204419	2/5/2006	6:39:00	MIL-16	ECE	TO	OCO	122	141,642
E739204789	2/5/2006	6:45:00	CLV-16	EAD	TF	OCO	40	10,200
E984430725	2/5/2006	6:53:00	CHA-15	ECC	TF	OSV	1	102
E852509303	2/5/2006	6:57:00	QUI-25	ECF	UN	OCO	27	73,386
E839462296	2/5/2006	6:57:00	CHI-12	ECD	TF	OCO	7	875
E480013563	2/5/2006	7:06:00	CPV-15	EAD	TF	OFU	6	4,806
E667497555	2/5/2006	7:07:00	LGY-12	EAD	TF	OCO	21	8,043
E419332140	2/5/2006	7:13:00	VAS-12	EBL	TF	OCO	45	32,396
E594179387	2/5/2006	7:18:00	PLG-13	ECC	TF	OCO	2	106
E423556353	2/5/2006	7:24:00	DUV-15	EBD	TO	OCO	27	5,940
E425947549	2/5/2006	7:26:00	ING-15	EBD	TO	OCO	41	5,453
E822604022	2/5/2006	7:31:00	QUI-26	ECF	TF	OCO	5	9,860
E313887903	2/5/2006	7:32:00	PLA-23	EBF	TF	OTF	8	1,128

Qualifying Storm Event
February 4, 2006

Notification	Date	Time	Circuit	Area	Cause	Equipment	Cust Outs	Cust Mins
E809174537	2/5/2006	7:55:00	LON-26	ECC	TF	OFC	139	48,650
E329681941	2/5/2006	7:55:00	HLC-24	EAD	TF	OFU	11	2,277
E946683251	2/5/2006	7:57:00	JUA-14	EBD	EF	OTF	6	708
E047674904	2/5/2006	7:58:00	GBK-13	EAD	TF	OCO	56	76,272
E860954506	2/5/2006	8:00:00	NOR-27	EBD	EF	OTF	6	690
E324620553	2/5/2006	8:02:00	FNW-16	ECD	TF	OCO	44	58,652
E640952855	2/5/2006	8:06:00	LLT-17	EBD	TO	OCO	952	37,128
E187646078	2/5/2006	8:06:00	LAB-25	EAA	EF	UOT	6	5,304
E303704510	2/5/2006	8:09:00	BCH-16	EAA	TF	OCO	10	2,320
E448725459	2/5/2006	8:26:00	NRU-23	EBE	TF	OCO	3	1,002
E125512527	2/5/2006	8:29:00	MAN-15	ECD	UN	OFC	116	40,020
E854650559	2/5/2006	8:36:00	RPT-15	ECD	TF	OSV	7	12,614
E234755186	2/5/2006	8:36:00	MCA-15	ECC	EF	OTR	2	768
E733797736	2/5/2006	8:46:00	KEN-13	EAA	TO	OCO	8	7,072
E448568896	2/5/2006	8:47:00	SIL-13	ECE	TO	OCO	10	20,798
E741326445	2/5/2006	8:49:00	LAT-17	EBJ	EF	OTF	4	193
E283979741	2/5/2006	8:50:00	VWY-15	EAA	TF	OCO	5	2,095
E695131672	2/5/2006	8:53:00	HAP-16	EAA	TF	OCO	5	945
E011917233	2/5/2006	8:54:00	NBO-22	EBD	EF	OCO	34	8,296
E797283769	2/5/2006	8:54:00	SIL-15	ECE	TO	OCO	2	1,332
E848909631	2/5/2006	8:54:00	COT-13	EBD	TF	OPO	10	7,520
E808578018	2/5/2006	8:55:00	MAN-16	ECD	TO	OCO	15	27,225
E437640471	2/5/2006	9:10:00	CHI-15	ECD	TF	OSV	1	1,895
E068421623	2/5/2006	9:11:00	ROC-13	ECC	TF	OFU	1	218
E095643711	2/5/2006	9:16:00	MAN-13	ECD	TF	OCO	3	72
E820560385	2/5/2006	9:21:00	CUS-16	EAA	TO	OCO	3	3,723
E520884309	2/5/2006	9:22:00	ING-13	EBD	TF	OSV	8	2,640
E273427102	2/5/2006	9:26:00	EDG-16	EBJ	TF	OSV	2	126
E189012036	2/5/2006	9:33:00	SKI-13	EBD	EF	OTF	2	640
E510291618	2/5/2006	9:44:00	COT-16	EBD	TO	OCO	9	1,404
E963919776	2/5/2006	9:47:00	WIN-16	ECE	TF	OSV	4	2,292
E906659249	2/5/2006	9:54:00	HKX-13	EAC	TF	OCO	1	126
E395938787	2/5/2006	10:00:00	POU-13	ECE	EF	OTF	3	2,430
E199962222	2/5/2006	10:03:00	HAS-13	ECF	TO	OCO	44	94,908
E663659857	2/5/2006	10:11:00	MAN-13	ECD	TO	OCO	75	92,625
E999218104	2/5/2006	10:17:00	PAT-15	ECC	TF	OCO	1	403
E182375311	2/5/2006	10:21:00	KEA-15	ECF	TF	OSV	5	2,695
E034008316	2/5/2006	10:26:00	MUR-15	ECE	TO	OFC	34	14,416
E631300367	2/5/2006	10:30:00	HAN-16	EAA	TF	OFU	10	1,250
E028373430	2/5/2006	10:35:00	BRI-15	EAA	TF	OFU	10	1,650
E760216917	2/5/2006	10:46:00	CEK-16	ECD	TF	OSV	8	4,112
E738708774	2/5/2006	10:46:00	VWY-12	EAA	EF	OFU	5	745
E373657472	2/5/2006	10:58:00	LOL-21	ECD	TF	OCO	17	13,702
E269613463	2/5/2006	11:00:00	BRE-35	ECE	EF	OFC	40	21,680
E657136762	2/5/2006	11:00:00	PTL-13	ECF	TF	OCO	599	521,130
E092571303	2/5/2006	11:00:00	FNW-13	ECD	TO	OCO	100	4,900
E014188968	2/5/2006	11:00:00	EPO-13	ECD	TO	OTR	385	297,990
E569892400	2/5/2006	11:02:00	NBE-13	EBF	TF	OSV	1	157
E347693349	2/5/2006	11:16:00	GRI-13	ECC	TF	OSV	1	85
E949414203	2/5/2006	11:20:00	RHO-16	ECA	EF	USV	1	213
E901312646	2/5/2006	11:30:00	MUR-13	ECE	TO	OFC	157	238,012
E113956380	2/5/2006	11:30:00	CEK-15	ECD	EF	PTF	1	471
E209024456	2/5/2006	11:32:00	MCW-17	ECE	TO	OCO	59	58,587
E280350936	2/5/2006	12:00:00	SKE-26	ECE	TF	OCO	1,172	914,160
E605615888	2/5/2006	12:00:00	FNW-13	ECD	TO	OCO	115	76,130
E695733188	2/5/2006	12:03:00	SNQ-17	EBF	EF	OTF	1	53
E500142972	2/5/2006	12:04:00	CPV-15	EAD	TF	OFU	5	1,085
E678754764	2/5/2006	12:05:00	HLC-24	EAD	TO	OFU	3	525
E741082263	2/5/2006	12:09:00	ING-15	EBD	TO	OCO	7	1,456

Qualifying Storm Event
February 4, 2006

Notification	Date	Time	Circuit	Area	Cause	Equipment	Cust Outs	Cust Mins
E787102871	2/5/2006	12:11:00	MUR-15	ECE	UN	OCO	11	21,615
E984072417	2/5/2006	12:12:00	SIN-22	ECD	TO	OCO	85	61,455
E811702286	2/5/2006	12:31:00	MWD-16	EBE	TO	OCO	23	1,610
E686482325	2/5/2006	12:45:00	HKX-16	EAC	TF	OCO	26	10,790
E023431502	2/5/2006	12:51:00	TRA-22	ECE	TF	OCO	63	36,351
E643889688	2/5/2006	13:00:00	BCH-15	EAA	TO	OCO	2	1,154
E391775729	2/5/2006	13:13:00	STW-15	ECA	EF	OTF	2	270
E163629814	2/5/2006	13:46:00	BTN-36	EAC	TF	OFC	1	29
E809178616	2/5/2006	13:46:00	LON-26	ECC	TO	OCO	25	2,194
E234660121	2/5/2006	13:50:00	MIL-17	ECE	TO	OCO	179	130,840
E655735129	2/5/2006	14:03:00	KAP-16	ECA	TF	OFU	2	340
E675212148	2/5/2006	14:05:00	NOR-23	EBD	TF	OSV	1	153
E145942761	2/5/2006	14:07:00	QUI-26	ECF	TO	OCO	9	2,850
E822352205	2/5/2006	14:07:00	SIN-24	ECD	EF	OFC	40	22,320
E020265471	2/5/2006	14:16:00	AIR-25	ECC	UN	OSV	4	576
E849363212	2/5/2006	14:33:00	PTL-13	ECF	TF	OCO	4	3,068
E743294571	2/5/2006	14:37:00	KNM-23	EBD	EF	OTF	4	216
E329854829	2/5/2006	14:39:00	MST-25	EBI	UN	UPC	52	6,047
E522379515	2/5/2006	14:47:00	NBO-26	EBD	TO	OCO	9	1,206
E476639010	2/5/2006	14:57:00	CLV-16	EAD	TF	OCO	22	17,776
E835812502	2/5/2006	15:23:00	FNW-16	ECD	TF	OFC	2	74
E931024103	2/5/2006	15:26:00	NBO-22	EBD	UN	UTC	4	332
E338859488	2/5/2006	15:27:00	KNM-25	EBD	TF	OSV	1	101
E713438707	2/5/2006	15:30:00	POU-13	ECE	TO	OFU	12	19,956
E898031218	2/5/2006	15:55:00	MAN-15	ECD	UN	OCO	1	365
E371262246	2/5/2006	16:00:00	SIN-25	ECD	TO	OTR	232	167,820
E274602245	2/5/2006	16:00:00	CEK-14	ECE	TF	OCO	333	239,760
E018546013	2/5/2006	16:08:00	NHL-17	EBD	TF	OSV	1	155
E980611472	2/5/2006	16:46:00	JHO-12	ECC	EF	OTF	5	110
E698832520	2/5/2006	16:50:00	FRA-16	ECD	TO	OCO	9	2,790
E047508189	2/5/2006	17:00:00	SKE-23	ECE	EF	OJU	10	4,800
E009393263	2/5/2006	17:26:00	NUG-25	EAA	TF	OTF	5	870
E102352866	2/5/2006	17:33:00	LLT-16	EBD	UN	UTC	1	80
E049448911	2/5/2006	17:35:00	BHL-16	ECE	EF	OCO	2	290
E820835401	2/5/2006	17:37:00	SOO-23	EBJ	UN	UEL	61	10,901
E176944067	2/5/2006	17:41:00	570166- 160320	EBI	EF	USV	1	100
E092231416	2/5/2006	18:09:00	TOL-17	EBD	EF	OFU	4	436
E789307983	2/5/2006	18:14:00	NOR-23	EBD	EF	OFC	2	250
E492429811	2/5/2006	18:27:00	SLA-16	EAA	TF	OTF	3	1,453
E129074208	2/5/2006	18:47:00	ORC-16	EBJ	AO	UPT	13	6,685
E552817228	2/5/2006	18:54:00	POU-15	ECE	TO	OTR	12	18,552
E034086300	2/5/2006	19:28:00	BRO-16	EAD	UN	OCO	2	484
E255574073	2/5/2006	19:29:00	ELD-25	ECC	TF	OCO	5	1,516
E768804014	2/5/2006	19:46:00	ALG-12	EAC	EF	UPC	19	17,936
E866040719	2/5/2006	19:57:00	FLD-13	EAD	TF	OSV	4	584
E397363181	2/5/2006	19:58:00	TRA-25	ECE	UN	OCO	4	4,088
E544959802	2/5/2006	20:01:00	CHR-23	ECE	TO	OCO	5	9,770
E277182839	2/5/2006	20:19:00	HKX-16	EAC	TF	OCO	8	1,208
E734299841	2/5/2006	20:21:00	MCK-16	EAA	TF	OSV	1	183
E719254187	2/5/2006	20:27:00	CRE-16	EAD	TF	OCO	4	612
E991056586	2/5/2006	20:34:00	HAP-15	EAA	TF	OSV	1	239
E898317700	2/5/2006	20:41:00	VAS-12	EBL	TF	OCO	6	444
E339207442	2/5/2006	21:01:00	SKE-23	ECE	EF	OTF	2	478
E281748506	2/5/2006	21:07:00	BLA-13	EAA	TO	OCO	8	3,904
E299111783	2/5/2006	21:09:00	RAI-12	ECC	TF	OCO	5	1,651
E086357788	2/5/2006	21:31:00	HKX-12	EAC	TF	OFU	4	1,196
E992961007	2/5/2006	21:37:00	IRO-13	ECF	TF	OCO	15	18,593
E950683412	2/5/2006	22:11:00	KNM-23	EBD	EF	OPO	6	2,652
E371831431	2/5/2006	22:17:00	PIK-21	EBF	TF	OSV	8	711

Qualifying Storm Event
February 4, 2006

Notification	Date	Time	Circuit	Area	Cause	Equipment	Cust Outs	Cust Mins
E605867722	2/5/2006	22:24:00	SIL-13	ECF	TF	OCO	17	25,602
E921317530	2/5/2006	22:44:00	KNM-27	EBD	TF	OSV	1	74
E379909295	2/5/2006	23:00:00	MAN-15	ECD	TF	OCO	5	5,390
E269156178	2/5/2006	23:30:00	UKN-84	ECD	EF	UPC	72	70,315
E447662287	2/5/2006	23:45:00	CEK-15	ECE	TF	OTF	54	17,820
E673909979	2/5/2006	23:55:00	EPO-13	ECD	TF	OTR	18	20,142

Terms, Codes and Definitions Used on Detail Reports

Notification	[Notification Number] A number assigned by SAP, identifying the outage record
Date	The date of the outage
Time	The time of the outage
Circuit	[Reference Circuit] The circuit identifier for the affected circuit
F/LOC	[Functional Location] The grid number where the outage occurred. If the grid number is not available, the Reference Circuit identifier occupies this field
EQT NBR	[Equipment Number] A number used to tie the equipment involved in the outage to the related information in SAP. This number does not represent the physical number of the equipment

Area	[Maintenance Planner Group] A code representing the energy, region and service center	
	EAA – Bellingham	EBJ – South King
	EAB – Lynden	EBK – Southwest King
	EAC – Skagit	EBL – Vashon
	EAD – Whidbey	ECA – Puyallup
	EBD – Redmond	ECC – Olympia
	EBE – Factoria	ECD – Port Orchard
	EBF – Snoqualmie	ECE – Poulsbo
	EBI – Enumclaw	ECF – Port Townsend

Cause	Cause of Outage	
	AO – Accident Other	EF – Equipment Failure
	BA – Bird or Animal	EO – Electrical Overload
	CP – Car Pole	TF – Tree Off Right-of-Way
	CR – Customer Request	TO – Tree On Right-of-Way
	DU – Dig-up Underground	UN – Unknown
	SO – Scheduled Outage	

Equipment	Affected by, or involved in the outage	
	OCN – Connector	OSW – Overhead Switch
	OCO – Overhead Conductor	OTF – Overhead Transformer Fuse
	OCR – Crossarm	OTR – Overhead Transformer
	OFC – Overhead Cut-out	OUP – OH to UG Primary
	OFS – Overhead Fire Signal	OUS – OH to UG Secondary Service
	OFU – Fuse Link/OH Line Fuse	SBF – High-side Bank Fuse
	OGS – Span Guy	SCB – Power Circuit Breaker
	OHR – Overhead Recloser	UOT – Underground Outdoor Term
	OIN – Insulator	UPC – Underground Primary Cable
	OJU- Jump Wire	UPT – Padmount Transformer
	OPO – Pole	USV – Underground Service
	OSV – Overhead Service	UTC – Underground Terminal Fuse
	ORE – Regulator	UTR – Submersible Transformer

Codes, Definitions – Continued

CUST OUT	[Customer Out] The number of customers without power for any given outage record
CUST MIN	[Customer Minutes] The total number of minutes customers were without power for any given record
CODE	[Storm Code] An event descriptor
	NON – Non Storm / Normal Conditions
	WTH – Weather Related (eg: wind storm, showers, etc)
	MAJ – Major event

Newsprint Media Coverage



The Seattle Times

Monday, February 6, 2006 - 12:00 AM

Thousands powerless for Super Bowl

By Warren Cornwall

Seattle Times staff reporter

Steve Manche was thinking about having a Super Bowl gathering at his home north of Oak Harbor on Whidbey Island.

Then the power went out early Saturday. And it stayed out.

So, Sunday afternoon, the chief petty officer in the Navy was sitting in the All Sports Pub and Eatery in Oak Harbor, waiting for the game to begin.

"We were thinking, OK, if the sports bar was too crazy, we'd caravan back to our house," he said. But with the turn of events, he said, "We're going to watch it here."

Manche's was one of thousands of households left without power in Western Washington on Super Bowl Sunday, a day after a windstorm walloped much of the region. Several hundred people also lost cable-television service.

Winds on Saturday topped 60 mph across much of the area. That was replaced by calm, sunny weather Sunday, which is expected to continue through the week, according to the National Weather Service.

Puget Sound Energy said roughly 12,000 people remained without power at 3:15 p.m. Sunday, down from a high of 140,000 early Saturday afternoon, said PSE spokeswoman Lynn Carlson.

The bulk of the remaining problems were in Kitsap County and around Woodinville and Duvall in King County, she said. The utility brought in repair crews from as far away as California to help.

In Snohomish County and on Camano Island, the number without power was cut from 30,000 Saturday to 250 by Sunday afternoon, said Snohomish County Public Utility District spokesman Mike Thorne.

Several hundred people had power but lost their cable-television service in the same storm, said Steve Kipp, spokesman for Comcast, a major cable provider in the area.

"We have been working around the clock. We have extra crews. We have really pulled out all the stops," Kipp said Sunday.

The Evergreen Point Floating Bridge over Lake Washington reopened to traffic at 2 a.m. Sunday. It had been closed Saturday morning because of high winds and waves. The bridge suffered minor damage, which was repaired, said state Department of Transportation spokeswoman Melanie Coon.

There was one reported storm-related fatality Saturday — a woman who died when a tree struck the car she was driving on Highway 4 in Southwest Washington.

Meanwhile, homeowners mopped up storm damage, or marveled at a close call.

Pat Filer watched Saturday as waves broke against the concrete bulkhead sheltering her home from Puget Sound south of Seattle's Alki neighborhood. But water soaked just a tiny part of a downstairs carpet. The

Qualifying Storm Event February 4, 2006

pressure of the wind blew out an upstairs window at a house she rents out, which sits next to her home, she said.

"We were really quite lucky. It could have been a disaster," she said.

Cindy Brown, co-owner of All Sports Pub in Oak Harbor, was counting herself lucky as well.

The business lost power early Saturday and didn't regain it until midnight, she said.

That left enough time for the beer to get cold before the crowds arrived to watch the game.



Most Power Restored From Saturday's Storm

February 6, 2006

SEATTLE - Most homes and businesses in Western Washington that lost power during a weekend windstorm regained electricity in time for the Super Bowl, Puget Sound Energy said.

The region's largest private utility reported that about 3,000 customers remained without power midday Monday, mostly in Kitsap County, down from a peak of 140,000 customers late Saturday.

Utility crews worked overnight to restore electricity, utility officials said.

Crews were summoned from British Columbia, Eastern Washington, Idaho, Oregon, California and Nevada to make sure as many Seahawks fans as possible could watch the Super Bowl on their own television sets.

The Washington 520 floating bridge across Lake Washington reopened to traffic early Sunday. The bridge had been closed since 9 a.m. Saturday because of high winds and rough water.

The storm caused minor damage to the bridge's mechanical span system and repairs were needed before it could be reopened, state transportation officials said.

During the storm, the 42-year-old floating bridge endured steady winds of 50 mph and gusts up to 75 mph. The draw span was opened to allow water to pass through the middle of the bridge, reducing the potential for damage.

The last time the bridge was shut down during a storm was in March 1999.

High water, heavy winds and a mudslide resulted in a 48-hour shutdown of passenger rail service north and south of Seattle. Amtrak service between Seattle and Portland, Ore., was canceled through at least Monday evening and between Seattle and Vancouver, British Columbia through at least Monday afternoon.

The railroad said it would provide alternative transportation for passengers scheduled to ride the train on its canceled trips.

Seattle Post-Intelligencer

Weekend storm cuts power, damages 520 bridge

Monday, February 6, 2006

By CHRISTINE FREY

Seattle dried out Sunday, after a weekend storm brought rain and strong winds that downed trees, knocked out power to thousands and closed a bridge.

The state Route 520 floating bridge reopened at 2 a.m. Sunday, after it had been closed for nearly 17 hours because of Saturday's forceful winds. A couple watch as a combination of high tides and strong wind causes waves to crash over the bulkhead of their building on Beach Drive in Alki on Saturday. The wind and rain storm caused power outages throughout the region, and some Seattle City Light customers were still without power Sunday.

The wind sheared off hooks that keep the bridge's draw span in place and bent its alignment system, said Melanie Coon, a spokeswoman for the Washington State Department of Transportation. Workers fixed the damage and inspected the bridge for safety before it reopened.

"We're in good shape," she said Sunday afternoon.

Some Seattle City Light customers were still without power Sunday afternoon, more than a day after wind and fallen tree braches battered power lines throughout the city.

About 28,000 customers in North and West Seattle, Magnolia, Tukwila and other areas lost power early Saturday morning. Crews restored power to most later in the day.

But about 340 customers remained without electricity Sunday, said City Light spokesman Larry Vogel. Crews were out in the afternoon -- during the Super Bowl -- working to restore power.

Those affected were in groups of three to 10 customers scattered throughout City Light's service area.

"We're doing the best we can to get everyone back up," Vogel said.



Storm Strikes Sound

By Tiffany Royal
Feb 08 2006

Kitsap County took a harder hit than most from Mother Nature last weekend, as she unleashed her wrath in a powerful storm Friday night and Saturday morning, with North Kitsap receiving the brunt of the destructive blow.

It was a busy weekend for fire departments, public works agencies, law enforcement and especially Puget Sound Energy. Each worked long hours to respond to the community's needs, ranging from power outages to emergencies caused by the storm.

The number of outages peaked at 2 p.m. Saturday, with 140,000 customers without power in Puget Sound, said PSE spokeswoman Lynn Carlson, primarily in Island, Jefferson and Kitsap counties. Kitsap alone had a total of 29,500 customers without power. More than 100 PSE utility crews, including backup support from Northern California and Canada, were in the field at the time.

As of Monday afternoon, there were still 3,000 homes without power in Kitsap County and 86 crews were on the job, two-thirds of which were working in Kitsap.

"We're intending to restore everybody by midnight (Monday)," she said.

There was significant damage on the Kitsap Peninsula, she added, as down trees and wind disrupted the operation of major transmission stations.

One of the more dramatic incidents caused by the storm in the North End was when North Kitsap Fire & Rescue crews and Kitsap County Sheriff's Office deputies responded to a call just after 8 a.m. Saturday of a waterfront cabin in Jefferson Beach, off Marine View Drive, washing off its foundation and into the Sound. A couple had been staying in it overnight.

The woman told deputies her husband was still in the cabin, which had floated about 100 feet offshore, at the time of the call, said KCSO spokesman Scott Wilson.

To rescue the man, a KCSO deputy on the scene, secured by a rope stabilized onshore by an NKF&R firefighter and another KCSO deputy, waded out to the cabin to get the man. A car parked near the cabin had also been inundated with water.

NKF&R crews returned to the scene Saturday afternoon to find that two more cabins had been flooded but were otherwise fine. They also found a 35x40-foot section of the Jefferson Beach Homeowners Association pier had been washed away in the storm.

Overall, NKF&R crews received more than 80 calls during an 18-hour period that started at 11:30 p.m. Friday night, said NKF&R spokeswoman Michèle Laboda.

The majority of accidents crews responded to involved trees on roadways and downed power lines. By 8 a.m. Saturday, nearly every thoroughfare in the district was blocked, she said.

"We were fortunate in escaping any serious injuries to citizens but we're struck over and over again by the incredible risks people took to get around our (road) blocks," Laboda said.

This was a major concern as Puget Sound Energy started restoring power to the area Saturday and felled lines that were believed to be dead could have been conducting power, she added.

The Poulsbo Fire Department didn't quite have as a dramatic situation as North but there were some close calls, including to back-to-back residential structure fires. However, the first fire was already out when PFD arrived on the scene and at the second house, the fire was nothing — just a couple candles providing light for a home.

"I'm just thankful those weren't true working fires because that would have zapped us," said PFD Battalion Chief Chris Morrison, noting that all his units were out on calls at the time. Volunteer firefighters were

Qualifying Storm Event February 4, 2006

called in to help staff two other stations and assist to calls for trees in power lines and downed wires. Overall, the department ran 101 calls — 76 calls on Saturday and 25 on Sunday.

Kitsap County Public Works spokesman Doug Bear said the county was hit the hardest in both the northern and southern regions, with as many as 90 different locations where downed trees were impeding traffic. Primarily, crews reported to downed trees on the road as well as those that tangled in power lines, Bear said, and crews worked from midnight Saturday through 8 a.m. Sunday morning as well as Sunday night trying to clear the area.

“It was a pretty significant event,” he said. “One of the hard things (though), if a tree is in a wire, we have to wait for PSE to get on site.”

Washington State Patrol also shut down State Route 104 from 9 a.m. to 1 p.m. Saturday between Port Gamble and Striebel’s Corner for downed power lines and lines in trees, said WSP spokesman Brian George.

At 1:20 a.m. Saturday morning, the Hood Canal Bridge was closed to traffic due to winds exceeding 50 mph. It reopened at 3 a.m., said Washington State Department of Transportation Communications Manager, Olympic region, Lisa Murdock. The bridge was then closed again between 3:40-4:45 a.m. because of high winds.

The Port of Kingston was hit hard by the winds and water, as boats in the marina suffered broken lines and a 28-foot derelict vessel in the harbor sunk, said POK office manager Scott Coulter.

One of the port’s shore pines, approximately 20-feet in height, located between the new bathrooms and boat launch, was uprooted entirely as well, he said.

But the most significant damage was to the port’s North Beach, just north of the ferry terminal, where the strong wind and rough waters eroded part of the bulkhead that makes up the four-foot wide trail that goes to the beach.

“That is out of commission for a while until we get it fixed,” he said.