

Public Works Department



PO Box 1001
Prosser, WA 99350
PHONE (509) 786-5611
co.benton.wa.us

RECEIVED

DEC 04 2018

WASH. UT. & TP. COMM

November 26, 2018

Mr. Steven V, King
Executive director
Washington Utilities and Transportation Commission
P.O. Box 47250
Olympia WA 98504-7250

RE: Docket No. TR-100572- Annual Compliance Filing

Dear: Mr. King,


Please find the attached data submitted for the Piert Road crossing in compliance with Docket TR-100572.

We have spoken with Agrium US Inc in November of 2018. And have determined that in 2019 an average of one train per day 4 days a week use this crossing. This is expected to remain the same all year. The trains carry hazardous material and primarily use the northern crossing.

We have attached the traffic counts in the area north and south of the tracks.

Thank you for your consideration of these materials. If you have any questions or concerns, please contact Tavis Hatfield at Tavis.Hatfield@co.benton.wa.us or call (509) 786-5611.

Sincerely,

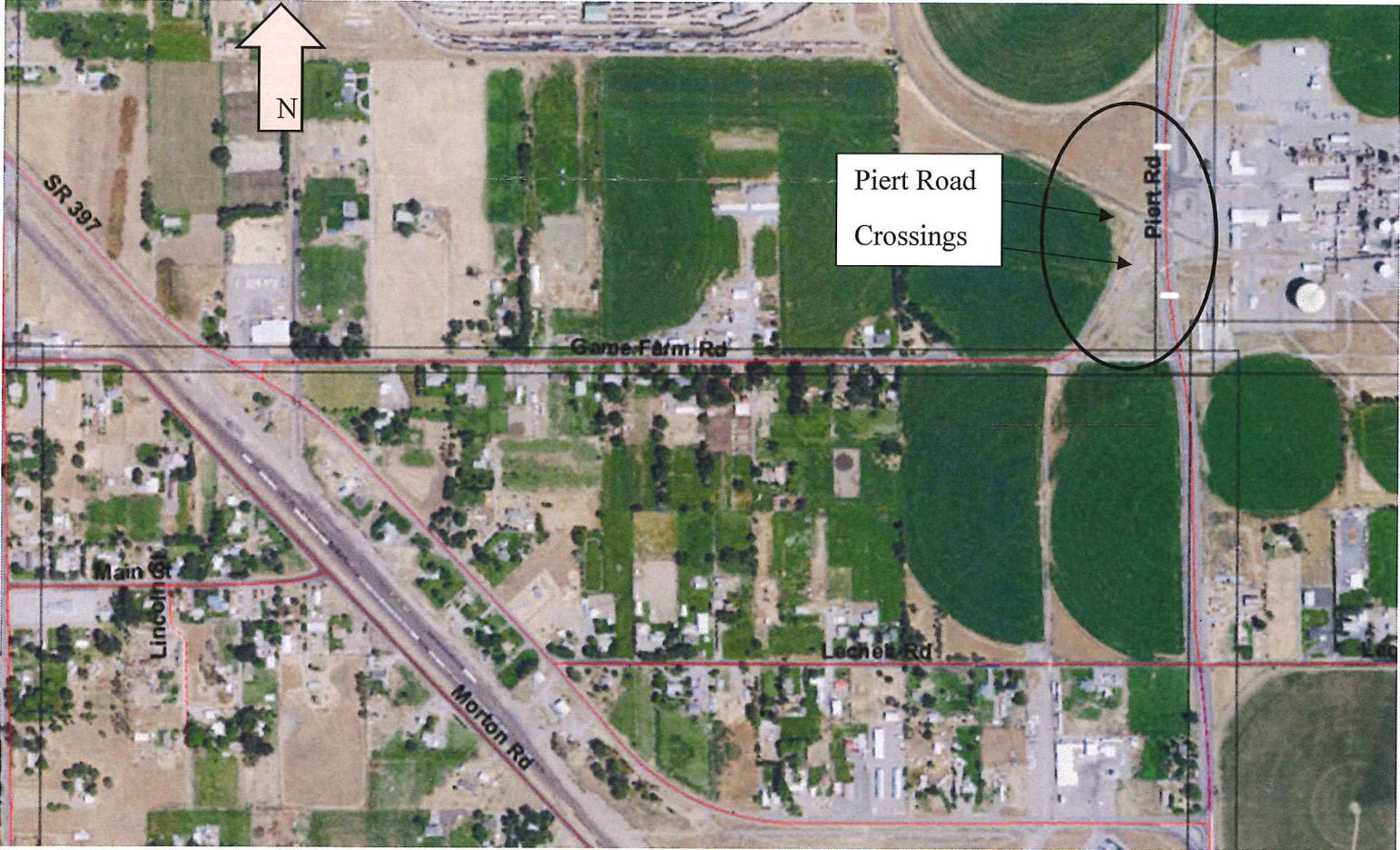


Mathew Rasmussen, PE, PLS
County Engineer.

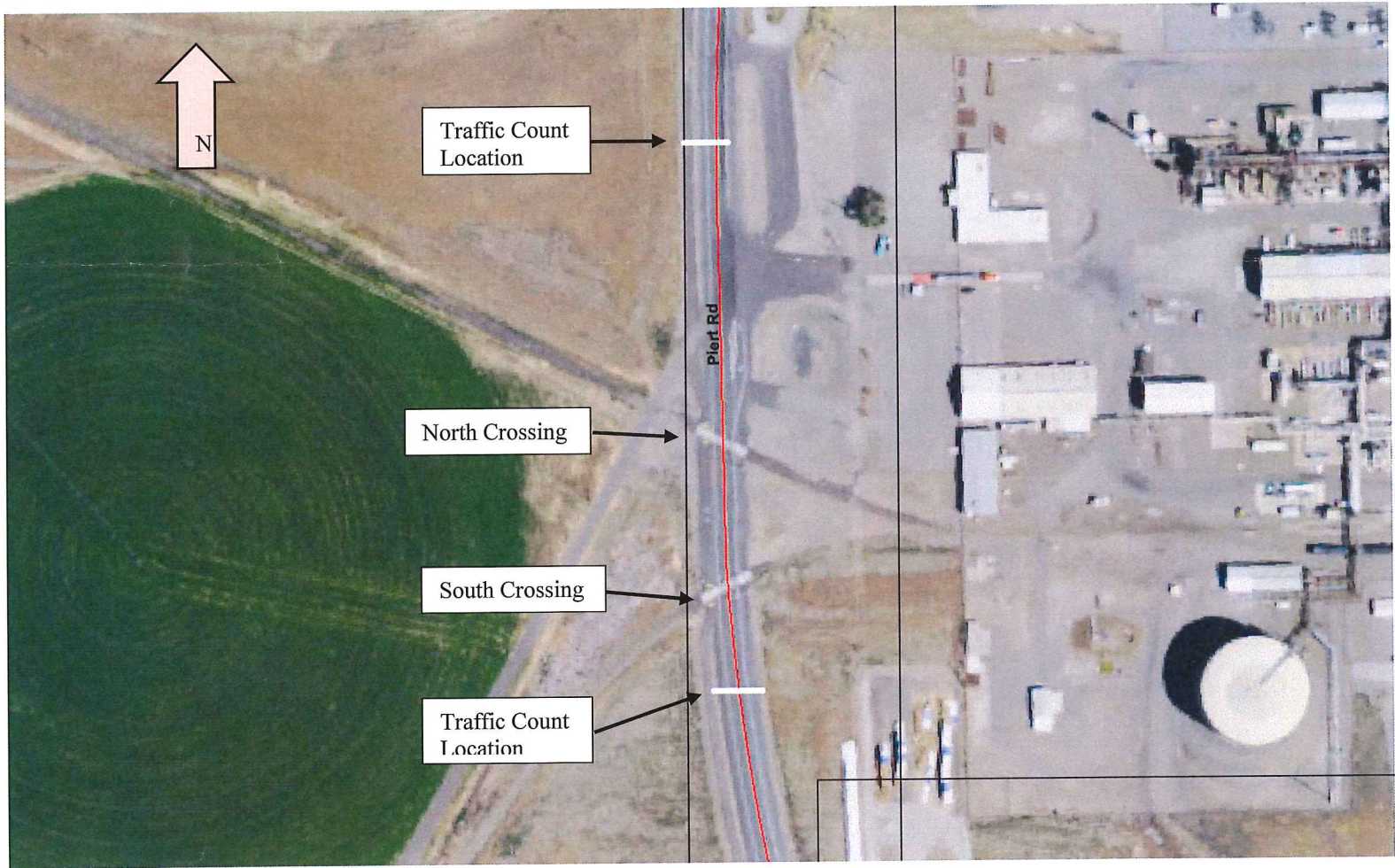
C:Kathy Hunter, Rail Safety Manager

RECEIVED
MANAGEMENT
2018 DEC -4 AM 8:25
STATE OF WASH
UT. AND TRANSP
COMMISSION

Traffic Count Locations
November 26, 2018
Docket TR-100572



Traffic Count Locations
November 26, 2018
Docket TR-100572



North crossings

Grand Total

Time	Total	Cls 1	Cls 2	Cls 3	Cls 4	Cls 5	Cls 6	Cls 7	Cls 8	Cls 9	Cls 10	Cls 11	Cls 12	Cls 13				
	1302	24	447	387	131	184	34	12	1	46	12	0	0	24	24	313		
Vehicles = 1302								230			59			24				

Posted speed limit = 37 mph, Exceeding = 799 (61.37%), Mean Exceeding = 53.43 mph
 Maximum = 97.2 mph, Minimum = 12.2 mph, Mean = 44.6 mph
 85% Speed = 60.32 mph, 95% Speed = 70.40 mph, Median = 41.75 mph
 12 mph Pace = 28 - 40, Number in Pace = 503 (38.63%)
 Variance = 216.46, Standard Deviation = 14.71 mph

Total days = 6, Coverage = 1.64%
 ADT = 190.500, SD = 35.252
 AADT = 190.500, SD = 35.252

Average daily volume

Entire week

	3	62	50	17	24	5	2	0	7	2	0	0	3	175
(%)	1.9	35.3	28.7	9.4	13.7	3.0	1.3	0.0	3.7	1.1	0.0	0.0	1.9	
AB	1	12	40	17	24	3	2	0	2	0	0	0	1	103
AB%	38.5	19.8	80.1	100.0	100.0	57.1	100.0	0.0	26.9	0.0	0.0	0.0	38.5	58.6
BA	2.0	49.5	10.0	0.0	0.0	2.3	0.0	0.0	4.8	2.0	0.0	0.0	2.0	72.5
BA%	61.5	80.2	19.9	0.0	0.0	42.9	0.0	0.0	73.1	100.0	0.0	0.0	61.5	41.4

South Crossings

Grand Total

Time	Total	Cls 1	Cls 2	Cls 3	Cls 4	Cls 5	Cls 6	Cls 7	Cls 8	Cls 9	Cls 10	Cls 11	Cls 12	Cls 13			
--	1286	21	496	412	66	184	25	14	1	35	11	0	0	21	291		
Vehicles = 1286								223			47			21			

Posted speed limit = 37 mph, Exceeding = 1021 (79.39%), Mean Exceeding = 48.61 mph
 Maximum = 92.0 mph, Minimum = 7.7 mph, Mean = 45.0 mph
 85% Speed = 54.80 mph, 95% Speed = 62.95 mph, Median = 44.63 mph
 12 mph Pace = 38 - 51, Number in Pace = 645 (50.16%)
 Variance = 111.65, Standard Deviation = 10.57 mph

Total days = 6, Coverage = 1.64%
 ADT = 187.167, SD = 30.695
 AADT = 187.167, SD = 30.695

Average daily volume

Entire week

	4	66	67	10	29	3	2	0	4	2	0	0	3	189
(%)	1.9	34.9	35.3	5.3	15.4	1.3	1.1	0.1	2.1	1.1	0.0	0.0	1.6	
AB	2	22	50	10	26	2	1	0	1	0	0	0	1	114
AB%	57.1	32.7	75.6	95.0	87.9	60.0	37.5	100.0	31.3	12.5	0.0	0.0	41.7	60.5
BA	1.5	44.3	16.3	0.5	3.5	1.0	1.3	0.0	2.8	1.8	0.0	0.0	1.8	74.5
BA%	42.9	67.3	24.4	5.0	12.1	40.0	62.5	0.0	68.8	87.5	0.0	0.0	58.3	39.5