



2005  
Qualifying Storm Events

**December 25, 2005**

## Table of Contents

<b>Table of Contents .....</b>	<b>2</b>
<b>Event Description .....</b>	<b>3</b>
Date of event .....	3
Event Type.....	3
Service Areas Affected .....	3
Number of Customers Affected.....	3
Summary of System Impacts .....	3
Mobilization Summary .....	3
<b>Major Event Day – Qualification.....</b>	<b>5</b>
<b>Qualified Events - 2005 .....</b>	<b>5</b>
Current Event – Calculation Detail .....	5
Cumulative list of events that have qualified.....	5
<b>Event Restoration – Cost Summary .....</b>	<b>6</b>
Restoration Cost Detail by Qualifying Event.....	6
YTD Storm Restoration Cost Detail – Through December 25, 2005.....	6
<b>Detail Documents .....</b>	<b>7</b>
Restoration Cost Detail – Current Event .....	8
SAIDI, SAIFI, CAIDI – Summary Report.....	9
Detailed List of Distribution Circuits with Outages.....	10
Terms, Codes and Definitions Used on Detail Reports.....	15
Newsprint Media Coverage .....	17

## Event Description

### Date of event

December 25, 2005

### Event Type

This was a brief, yet widespread wind storm on Christmas Day morning. Beginning at 6:00a, winds gusted to nearly 40mph, causing electric outages in Kitsap, Jefferson, King, Skagit, Whatcom and Island counties before tapering-off mid morning.

### Service Areas Affected

Kitsap and Jefferson counties experienced the greatest storm damage, much of which was the result of trees falling across power lines. Record rainfall in Kitsap and Jefferson counties likely contributed to the number of trees that came down. A significant though lesser number of outages was experienced across the remaining parts of PSE's electric service area.

### Number of Customers Affected

54,270 customers lost power during the event.

### Summary of System Impacts

<b>Total Number of Outages</b>	<b>388</b>
Distribution Circuits Totally Out	15
Distribution Circuits Partially Out	373
Transmission Circuits Affected	6
Substations Totally Off-line	2

### Mobilization Summary

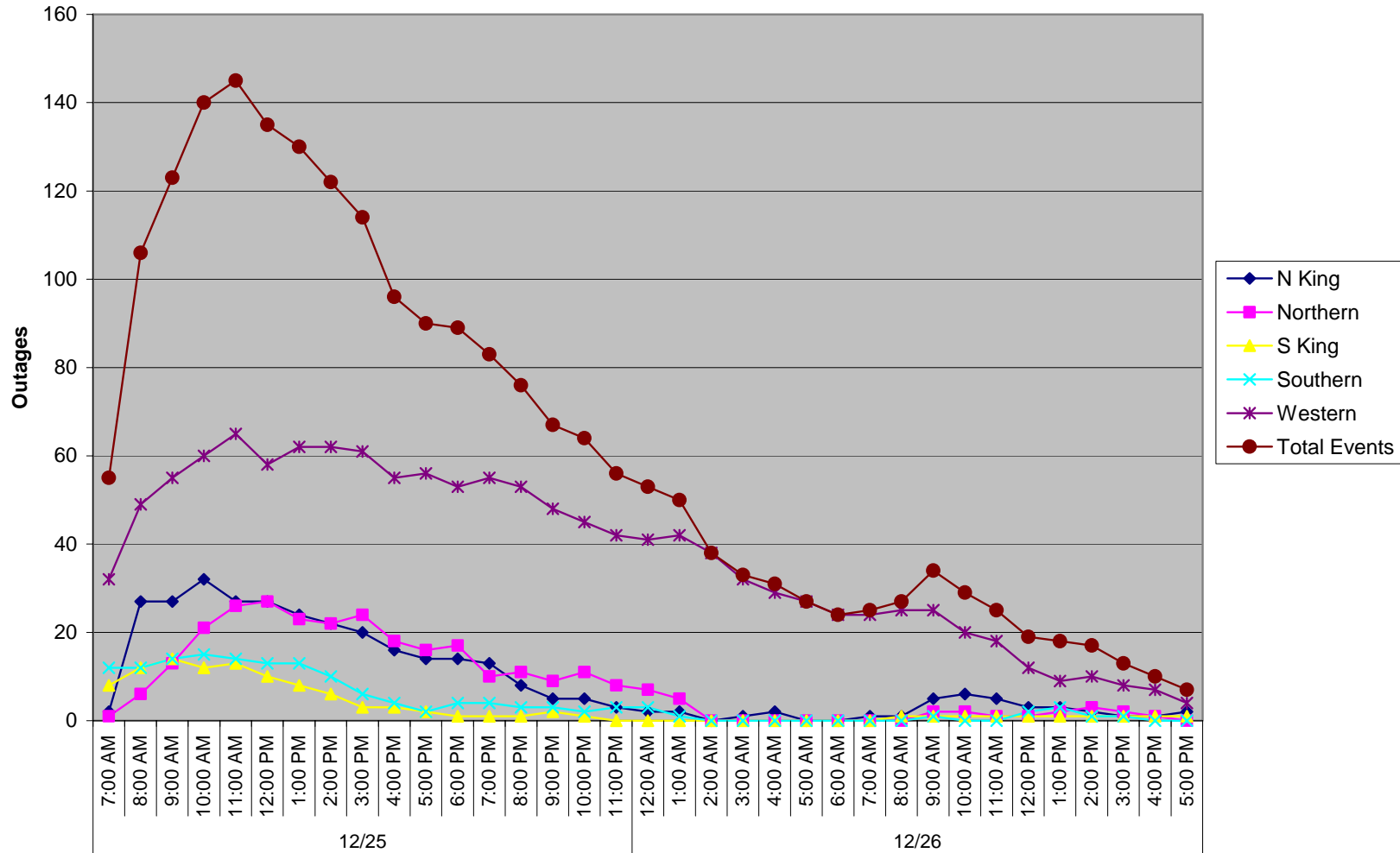
#### Operating bases

Base	Date Opened	Time Opened	Date Closed	Time Closed
S. King	12/25/2005	6:40a	12/25/2005	3:00p
Thurston	12/25/2005	6:40a	12/25/2005	3:45p
Kitsap	12/25/2005	6:40a	12/26/2005	5:30p
N. King	12/25/2005	7:30a	12/25/2005	6:00p
Skagit	12/25/2005	9:30a	12/25/2005	11:00p

#### Emergency Operations Center

EOC	Date Opened	Time Opened	Date Closed	Time Closed
	12/25/2005	6:50a	12/26/2005	7:00a

### Outage Events - December 25, 2005



## Major Event Day – Qualification

### IEEE 1366 Method

IEEE 1366 was established to present a set of terms and definitions which can be used to foster uniformity in the development of distribution service reliability indices, to identify factors which affect the indices, and to aid in consistent reporting practices among utilities. Also, it provides guidance for new personnel in the reliability area, and tools for internal as well as external comparisons. The Major Event Day definition was created as part of IEEE 1366 to allow for consistent calculation of reliability metrics between utilities, and enable more valid comparisons with other utility reliability metrics.

#### IEEE Major Event Day Calculation (2.5 BETA METHOD)

1. A threshold on daily SAIDI is computed once a year, following year end.
2. Assemble the 5 most recent years of historical values of SAIDI/day.
3. Discard any days in the data set that has a SAIDI/day of zero.
4. Find the natural logarithm of each value in the data set.
5. Compute the average Alpha and the standard deviation (Beta) of the natural logarithms computed in step 3.
6. Compute the threshold Tmed where  $Tmed = \exp(\text{Alpha} + 2.5 * \text{Beta})$
7. Any day in the next year with SAIDI > Tmed is a major event day.

**Puget Sound Energy's Major Event Threshold for 2005: 4.88 Minutes**

## Qualified Events - 2005

### Current Event – Calculation Detail

Event Date	Total Customer Minutes	Average Customer Count	Daily SAIDI – Customer Minutes /Customer Count
12/25/2005	18,065,147	1,025,244	17.62

### Cumulative list of events that have qualified

Date(s)	T-med Score	O&M – Deferrable Accumulation
3/20/2005	28.85	\$928,453
12/2/2005	6.67	\$244,418
12/17/2005	14.28	\$878,970
12/25/2005	17.62	\$1,118,316

## Event Restoration – Cost Summary

### Restoration Cost Detail by Qualifying Event

Date	Capital	C&D Costs Recoverable from Direct Billings (Costs Not Yet Billed)	O&M – Not Deferrable	O&M – Deferrable Accumulation	Total O&M	Total
03/20/2005	\$81,999	\$0	\$76,071	\$928,453	\$1,004,524	\$1,086,523
12/02/2005	\$23,091	\$0	\$27,907	\$244,418	\$272,325	\$295,416
12/17/2005	\$73,873	\$0	\$84,577	\$878,970	\$963,547	\$1,037,420
12/25/2005	\$54,585	\$0	\$95,258	\$1,118,316	\$1,213,574	\$1,268,159

### YTD Storm Restoration Cost Detail – Through December 25, 2005

Catastrophic Deferred Account	Capital	C&D Costs Recoverable from Direct Billings (Costs Not Yet Billed)	O&M – Not Deferrable	O&M Deferrable Accumulation	Total O&M	Total
\$0	\$233,548	\$0	\$283,813	\$3,170,157	\$3,453,970	\$3,687,518

Qualifying Storm Event  
December 25, 2005

## Detail Documents

**Restoration Cost Detail – Current Event**

**SAIDI, SAIFI, CAIDI – Summary Report**

**Detailed List of Distribution Circuits with Outages**

**Terms, Codes & Definitions Used on Detail Reports**

**Newsprint Media Coverage**

**Restoration Cost Detail – Current Event**

<b>Puget Sound Energy December 25, 2005 Storm Damage Repair Costs</b>							
	Catastrophic Deferred Account	Capital	C&D Recoverable from Direct Billings (Costs Not Yet Billed)	O&M - Not Deferrable	O&M - Deferrable Accumulation	Total O&M	Total
Labor							
ST		\$0			\$4,938	\$4,938	\$4,938
OT		\$250			\$145,165	\$145,165	\$145,415
Total Labor	\$0	\$250	\$0	\$0	\$150,103	\$150,103	\$150,353
Labor OH		\$95			\$51,742	\$51,742	\$51,837
Materials		\$6,448			\$43,358	\$43,358	\$49,806
Contractors		\$36,731			\$850,000	\$850,000	\$886,731
Other Direct Charges		\$0			\$864	\$864	\$864
Fleet		\$145			\$11,633	\$11,633	\$11,778
Other Assessments		\$10,916		\$95,258	\$10,616	\$105,874	\$116,790
	\$0	\$54,585	\$0	\$95,258	\$1,118,316	\$1,213,574	\$1,268,159



**SAIDI, SAIFI, CAIDI – Summary Report**

<b>SAIDI SAIFI CAIDI</b>						
December 25-26						
Outage Cause	COUNT	C/MIN	C/OUT	SAIDI	SAIFI	CAIDI
BIRD OR ANIMAL	3	28,962	184	0.0282	0.0002	157.4022
CAR/POLE ACCIDENT	1	118	1	0.0001	0	118
CUSTOMER REQUEST	1	110	1	0.0001	0	110
DIG UP UNDERGROUND	1	94	1	0.0001	0	94
EQUIPMENT FAILURE	40	748,385	1,791	0.73	0.0017	417.8587
ELECTRICAL OVERLOAD	1	843,281	1,477	0.8225	0.0014	570.9418
PARTIAL OUTAGE	2	251	2	0.0002	0	125.5
TREE - OFF RIGHT OF WAY	109	5,960,268	26,959	5.8135	0.0263	221.0864
TREE - ON RIGHT OF WAY	133	10,435,849	33,395	10.1789	0.0326	312.4973
UNKNOWN CAUSE (UNK EQUIP INVOLVED ONLY)	4	41,594	77	0.0406	0.0001	540.1818
<b>TOTALS</b>	<b>295</b>	<b>18,058,912</b>	<b>63,888</b>	<b>17.6143</b>	<b>0.0623</b>	<b>282.6652</b>

Average Customer Count Used = 1,025,244

### Detailed List of Distribution Circuits with Outages

Notification	Date	Time	Circuit	Area	Cause	Equipment	Cust Outs	Cust Mins
E453373760	12/25/2005	0:32:00	CHR-25	ECE	TO	OCO	1,982	107,028
E586213589	12/25/2005	1:00:00	DES-12	EBJ	BA	OTF	6	354
E612455328	12/25/2005	5:10:00	CHI-12	ECD	TO	OCO	2,642	1,035,806
10614842	12/25/2005	5:12:00	AIR-23	ECC	TF	OCO	25	15,075
E347912628	12/25/2005	5:12:00	LON-22	ECC	TO	OCO	182	27,482
E040276652	12/25/2005	5:21:00	SIL-16	ECD	TO	OCO	147	49,833
E148768245	12/25/2005	5:44:00	SIL-15	ECD	TO	OCO	270	541,890
E573269635	12/25/2005	5:44:00	YEL-25	ECC	TO	OCO	1,256	280,088
E160188194	12/25/2005	6:01:00	LON-26	ECC	TO	CDH	1,266	142,380
E906555703	12/25/2005	6:06:00	SHE-25	ECE	TO	OFU	78	48,672
E160028627	12/25/2005	6:08:00	BLU-13	ECC	TF	OSV	2	510
E557149294	12/25/2005	6:08:00	MUR-16	ECE	EO	OCO	1,477	843,281
E899786940	12/25/2005	6:09:00	MIL-16	ECE	TO	OCO	25	33,900
10615040	12/25/2005	6:09:00	TLN-0089	ECE	TO	OCO	5,217	41,736
E999778054	12/25/2005	6:09:00	MIL-22	ECE	TO	OCO	128	106,368
E150026350	12/25/2005	6:11:00	SWI-15	ECC	TO	OCO	89	17,266
E481232707	12/25/2005	6:14:00	YEL-26	ECC	TF	OCO	470	197,870
E876112831	12/25/2005	6:35:00	TLN-0065	ECD	TF	OCO	5,839	1,559,013
E769173926	12/25/2005	6:38:00	FRA-12	ECD	TO	OCO	50	79,250
E383906438	12/25/2005	6:40:00	YEL-23	ECC	TO	OCO	27	7,020
E479841291	12/25/2005	6:40:00	CHI-13	ECD	TO	OFU	258	88,236
E503403436	12/25/2005	6:44:00	STA-26	EBJ	TO	OPO	1,369	610,574
E665293367	12/25/2005	6:46:00	HAZ-12	EBE	TF	OCO	1,994	454,632
E380036212	12/25/2005	6:46:00	BON-15	ECA	TO	OCO	18	2,991
E766224877	12/25/2005	6:49:00	SEQ-13	EBJ	TO	OFU	81	12,717
E970147608	12/25/2005	6:49:00	PMA-13	ECE	TO	OCO	87	84,738
E709300620	12/25/2005	6:50:00	PMA-12	ECE	TF	OCO	123	47,478
E231218554	12/25/2005	6:50:00	EDG-13	ECA	TO	OFU	24	4,344
E445810859	12/25/2005	6:50:00	MIL-17	ECE	TO	OCO	48	66,000
E505886963	12/25/2005	6:50:00	FWY-15	EBJ	EF	OCO	764	294,140
E995964116	12/25/2005	6:50:00	BHL-12	ECE	TO	OCO	55	35,420
E822829276	12/25/2005	6:50:00	SIL-13	ECF	TF	OCO	51	17,340
E822723268	12/25/2005	6:51:00	SIL-13	ECE	TO	OPO	18	12,042
E231477957	12/25/2005	6:51:00	SIN-24	ECD	TO	OCO	852	790,656
E574375561	12/25/2005	6:51:00	COT-17	EBD	TF	OCO	866	157,612
E360969414	12/25/2005	6:51:00	BDI-12	EBI	TO	OCO	1,803	344,373
E112278964	12/25/2005	6:51:00	DIS-12	ECF	TF	OCO	23	21,827
E223407720	12/25/2005	6:51:00	SHD-18	EBI	TO	OCO	1,431	227,529
E012950004	12/25/2005	6:51:00	SIL-13	ECE	TF	OPO	2	3,588
E422828017	12/25/2005	6:54:00	BRE-36	ECE	TF	OCO	244	225,700
E119185315	12/25/2005	6:54:00	ORT-22	ECA	TO	OCO	13	4,238
E012135666	12/25/2005	6:54:00	EPO-13	ECD	TF	OCO	117	92,781
E665859010	12/25/2005	6:55:00	QUI-25	ECF	TO	OCO	20	8,760
E169440950	12/25/2005	6:55:00	BHL-13	ECE	TF	OCO	108	123,120
E337304194	12/25/2005	6:55:00	MCA-15	ECC	TO	OCO	21	7,140
E036816340	12/25/2005	6:56:00	MAN-16	ECD	TF	OCO	10	13,720
E114043975	12/25/2005	6:56:00	WIN-13	ECE	TO	OCO	37	46,028
E789915034	12/25/2005	6:56:00	CHI-15	ECD	TO	OFU	50	18,450
E013568268	12/25/2005	6:58:00	ZEN-23	EBJ	TF	OTF	6	1,080
E233482801	12/25/2005	6:58:00	WIN-12	ECE	TO	OCO	1,119	326,748
E572606459	12/25/2005	6:58:00	LGY-12	EAD	TO	OCO	89	66,483
E430584200	12/25/2005	6:59:00	PTL-13	ECF	TO	OFU	33	3,828
E547104553	12/25/2005	7:02:00	BRE-36	ECD	EF	OPO	874	401,630
E209499291	12/25/2005	7:03:00	RPT-22	ECD	TO	OFU	155	67,855
E247428194	12/25/2005	7:05:00	KLA-15	EBF	TF	OCO	2,427	237,846

Qualifying Storm Event  
December 25, 2005

Notification	Date	Time	Circuit	Area	Cause	Equipment	Cust Outs	Cust Mins
E393293527	12/25/2005	7:05:00	KLA-17	EBF	TF	OCO	2,298	275,760
E348299145	12/25/2005	7:05:00	TLN-0116	EBF	TF	OCO	4,546	772,820
E785748081	12/25/2005	7:07:00	KCR-17	EBJ	TF	OTF	3	654
E508517635	12/25/2005	7:08:00	EPO-12	ECD	TF	OCO	24	14,208
E710353636	12/25/2005	7:09:00	LOL-23	ECD	TO	OCO	33	22,127
E769474626	12/25/2005	7:11:00	PGA-15	ECF	TF	OCO	4	1,876
E508966564	12/25/2005	7:12:00	WOO-27	ECA	TO	OFU	13	4,264
E674214579	12/25/2005	7:12:00	FAL-13	EBF	TO	OCO	41	28,556
E741757646	12/25/2005	7:12:00	FRA-13	ECD	TO	OCO	128	125,568
E471427725	12/25/2005	7:13:00	POU-16	ECE	TO	OFU	30	23,910
E244469910	12/25/2005	7:14:00	SIN-22	ECD	TF	OCO	182	259,532
E807101737	12/25/2005	7:16:00	PGA-13	ECE	TO	OHR	1,078	798,182
E704153220	12/25/2005	7:18:00	KWH-25	EBD	TF	OCO	1,940	341,418
E122867230	12/25/2005	7:19:00	FRA-15	ECD	TF	OHR	771	185,811
E449439976	12/25/2005	7:19:00	NRU-23	EBE	TF	OCO	284	71,568
E148401092	12/25/2005	7:19:00	KWH-23	EBE	TO	OCO	652	532,032
E792404129	12/25/2005	7:20:00	CHR-22	ECE	TF	OCO	100	64,000
E123219245	12/25/2005	7:20:00	FLD-12	EAD	EF	OCO	10	6,700
E542827339	12/25/2005	7:25:00	SAH-17	EBD	TO	OCO	10	5,810
E280961450	12/25/2005	7:25:00	ROS-21	EBD	TF	OCO	2,162	198,904
E942535467	12/25/2005	7:28:00	TRA-22	ECE	TO	OCO	1,548	184,212
E299605295	12/25/2005	7:28:00	DUV-12	EBD	TF	OCO	19	13,756
E647788137	12/25/2005	7:28:00	EGT-12	EBE	TF	OCO	28	12,432
E086729496	12/25/2005	7:30:00	SNQ-13	EBF	TO	OCO	96	41,496
E746189943	12/25/2005	7:31:00	BRO-15	EAD	TO	OCO	1,519	185,141
E235763031	12/25/2005	7:34:00	TOL-17	EBD	TF	OSV	1	574
E992061621	12/25/2005	7:35:00	IRO-13	ECF	TO	OCO	17	8,585
E355538900	12/25/2005	7:40:00	SIL-15	ECE	TO	OCO	360	434,000
E450324964	12/25/2005	7:41:00	HKX-12	EAC	TO	OCO	230	30,590
E426291330	12/25/2005	7:42:00	SKE-26	ECE	TO	OHR	1,369	599,622
E408800137	12/25/2005	7:43:00	HAM-13	EAC	TO	OCO	796	109,052
E755815342	12/25/2005	7:43:00	RPT-17	ECD	TO	OFU	608	247,456
E538855559	12/25/2005	7:43:00	RDO-15	EBJ	TF	OFC	1	177
E836079914	12/25/2005	7:54:00	BRO-16	EAD	TO	OCO	3	1,608
E339524433	12/25/2005	7:59:00	PHA-17	EBE	TO	OCO	165	112,200
E193736990	12/25/2005	8:02:00	SKE-23	ECE	TO	OCO	597	389,244
E489916105	12/25/2005	8:09:00	MLK-12	EBE	TF	OCO	52	10,399
E595200579	12/25/2005	8:11:00	PAN-14	EBJ	TF	OTF	3	897
E817303790	12/25/2005	8:12:00	FLD-13	EAD	TO	OCO	30	15,690
E148066773	12/25/2005	8:13:00	CPV-12	EAD	TO	OTR	16	7,232
E071932100	12/25/2005	8:16:00	SIN-25	ECD	TF	OSV	17	12,478
E570136302	12/25/2005	8:20:00	WAB-12	EBI	EF	UPC	1	490
E627713537	12/25/2005	8:23:00	LON-22	ECC	TO	OCO	34	1,020
E685553629	12/25/2005	8:29:00	SIL-16	ECE	TO	OFU	10	4,300
E439353344	12/25/2005	8:29:00	SIL-16	ECE	TO	OCO	8	12,752
E049124094	12/25/2005	8:30:00	NLM-12	EAC	TO	OCO	68	31,620
E926684151	12/25/2005	8:31:00	ORT-25	ECA	BA	OFU	178	27,768
E956944914	12/25/2005	8:32:00	VAS-13	EBL	TF	OCO	12	7,836
E356027718	12/25/2005	8:33:00	PMA-16	ECE	TO	OCO	252	354,564
E497317187	12/25/2005	8:34:00	LAT-17	EBJ	TF	OFU	17	3,077
E770230972	12/25/2005	8:35:00	LGY-15	EAD	TO	OCO	13	5,486
E133384950	12/25/2005	8:40:00	HAM-15	EAC	TO	OCO	20	11,540
E972450845	12/25/2005	8:40:00	HAM-15	EAC	TO	OCO	168	43,680
E432294594	12/25/2005	8:42:00	WAU-26	EBJ	TF	OCO	44	26,962
E313425455	12/25/2005	8:46:00	COT-13	EBD	TF	OSV	5	826
E265461306	12/25/2005	8:46:00	DUV-15	EBD	EF	OFU	23	8,947
E211528172	12/25/2005	8:52:00	LGY-16	EAD	TO	OCO	65	14,170
E928307069	12/25/2005	8:55:00	BIG-16	EAC	EF	OPO	1	695
E131174682	12/25/2005	8:55:00	PTL-16	ECF	TO	OCO	3	150
E183624776	12/25/2005	8:57:00	LYN-24	EAA	UN	OCO	50	34,200

Qualifying Storm Event  
December 25, 2005

Notification	Date	Time	Circuit	Area	Cause	Equipment	Cust Outs	Cust Mins
E586128853	12/25/2005	9:00:00	MAN-15	ECD	TF	OSV	2	1,920
E058172377	12/25/2005	9:02:00	WLS-16	EAC	TO	OTR	1	298
E014651863	12/25/2005	9:07:00	NUG-26	EAA	EF	OPO	15	4,140
E554663403	12/25/2005	9:08:00	PGA-12	ECE	TO	OPO	40	66,900
E779840481	12/25/2005	9:17:00	BTN-36	EAC	TO	OCO	8	7,384
E802266838	12/25/2005	9:18:00	POU-15	ECE	TF	OSV	3	4,266
E509132126	12/25/2005	9:20:00	EDG-16	ECA	EF	OTF	4	560
E814437451	12/25/2005	9:20:00	LON-22	ECC	TO	OCO	20	6,060
E945276895	12/25/2005	9:25:00	QUI-26	ECF	TO	OFU	2	520
E342373937	12/25/2005	9:33:00	EDG-15	ECA	TO	OCO	15	8,910
E984041040	12/25/2005	9:37:00	SHE-26	ECE	TO	OCR	9	14,067
E454434448	12/25/2005	9:40:00	BIG-15	EAC	TO	OTR	2	402
E870164175	12/25/2005	9:41:00	LEA-16	EBI	TF	OTR	1	289
10615008	12/25/2005	9:41:00	TLN-0009	EAA	TF	OCO	986	11,832
E593744981	12/25/2005	9:45:00	CUS-16	EAA	TO	OPO	569	65,310
10615003	12/25/2005	9:46:00	HAM-15	EAC	TO	OCO	6	2,688
E889237355	12/25/2005	9:50:00	CLY-23	EBE	TF	OCO	29	21,692
E220766358	12/25/2005	9:51:00	PTL-13	ECF	TF	OTF	3	27
E392795316	12/25/2005	9:56:00	VWY-15	EAA	TO	OCO	10	720
E330026511	12/25/2005	10:08:00	MAN-12	ECD	TF	OCO	7	7,049
E734108288	12/25/2005	10:09:00	SMR-24	ECA	EF	UPC	4	3,600
E945002841	12/25/2005	10:09:00	SIL-16	ECD	TO	OFU	54	17,064
E768873054	12/25/2005	10:14:00	SME-12	EBE	TF	OTR	1	974
E026885236	12/25/2005	10:14:00	SHD-18	EBJ	TF	OTF	2	114
E212366778	12/25/2005	10:14:00	MCW-17	ECE	TF	OTF	7	6,797
E471012965	12/25/2005	10:16:00	SOO-23	EBJ	TF	OTF	3	312
E378727941	12/25/2005	10:19:00	TOL-15	EBD	TF	OCO	10	2,790
E146429697	12/25/2005	10:20:00	WIN-15	ECE	TO	OCO	8	12,040
E404377836	12/25/2005	10:20:00	FRA-16	ECD	TF	OSV	2	1,350
E232986064	12/25/2005	10:22:00	MUR-15	ECE	TO	OFU	32	20,416
E495055371	12/25/2005	10:27:00	NLM-15	EAC	TO	OTR	2	566
E044915138	12/25/2005	10:27:00	HAN-15	EAA	CP	OPO	1	118
E274580622	12/25/2005	10:35:00	BRS-24	EAC	TO	OCO	31	13,795
E414648410	12/25/2005	10:35:00	BRS-24	EAC	TO	OTR	7	2,065
E975006552	12/25/2005	10:35:00	CHR-25	ECE	TF	OFC	40	36,040
E791893969	12/25/2005	10:35:00	NBE-16	EBF	TF	OCO	114	43,206
E929661342	12/25/2005	10:37:00	CPV-15	EAD	TO	OTR	3	1,464
E351627113	12/25/2005	10:42:00	DES-16	EBJ	TF	OSV	2	66
E029381246	12/25/2005	10:48:00	SOO-23	EBI	TF	OTF	8	1,016
E031483613	12/25/2005	10:55:00	SHD-18	EBI	TF	OCO	4	932
E937601264	12/25/2005	10:57:00	HKX-12	EAC	TO	OTR	1	123
E013089485	12/25/2005	11:00:00	QUI-25	ECF	TF	OCO	2	1,720
E575563607	12/25/2005	11:25:00	FRG-26	ECC	BA	OTF	3	735
E113394926	12/25/2005	11:26:00	FNW-16	ECD	TO	OFU	18	9,144
E559050685	12/25/2005	11:40:00	PHA-13	EBE	EF	OTF	6	1,452
E893411417	12/25/2005	11:50:00	VAS-12	EBL	TF	OSV	2	240
E759619545	12/25/2005	11:52:00	JUA-12	EBD	EF	UTR	4	1,892
E501720391	12/25/2005	11:52:00	BON-17	ECA	BA	OTF	3	459
E901697475	12/25/2005	11:58:00	CHI-13	ECD	TO	OCO	10	12,370
E823539191	12/25/2005	11:59:00	FNW-15	ECD	TO	OFU	6	2,886
E756429579	12/25/2005	12:00:00	CHI-12	ECE	TF	OCO	1	945
E363619393	12/25/2005	12:03:00	KWH-25	EBD	TF	OCO	143	11,583
E659752739	12/25/2005	12:18:00	YEL-25	ECC	TO	OCO	5	460
E675540129	12/25/2005	12:23:00	PMA-15	ECE	TF	OFU	2	1,054
E549359446	12/25/2005	12:24:00	FNW-17	ECD	TO	OTF	7	4,347
E534669518	12/25/2005	12:30:00	LGY-16	EAD	TO	OTR	50	7,000
E654815659	12/25/2005	12:30:00	SIL-13	ECF	TF	OCO	51	13,515
E623509823	12/25/2005	12:31:00	CHI-13	ECD	TO	OFU	15	2,235
E030299226	12/25/2005	12:34:00	FWY-11	EBJ	TF	OCO	173	38,406
E481109794	12/25/2005	12:34:00	CHI-12	ECD	TO	OFU	31	5,177

Qualifying Storm Event  
December 25, 2005

Notification	Date	Time	Circuit	Area	Cause	Equipment	Cust Outs	Cust Mins
E868997773	12/25/2005	12:42:00	VWY-15	EAA	EF	UOT	9	5,607
E532148390	12/25/2005	12:51:00	PLG-13	ECC	TF	OTF	2	138
E722513484	12/25/2005	13:00:00	BLU-13	ECC	TF	OSV	1	30
E994920850	12/25/2005	13:11:00	IRO-17	ECF	EF	USV	1	281
E335490847	12/25/2005	13:16:00	PMA-12	ECE	TF	OCO	90	86,760
E512760995	12/25/2005	13:22:00	PMA-12	ECE	TF	OCO	36	31,608
E541997362	12/25/2005	13:32:00	BIG-12	EAC	TO	OCO	45	4,822
E483654947	12/25/2005	13:36:00	MED-36	EBE	EF	OTF	6	774
E390018024	12/25/2005	13:37:00	ING-15	EBD	TF	OCO	6	3,192
E844292452	12/25/2005	13:52:00	LGY-16	EAD	TO	OTR	5	311
E279805609	12/25/2005	14:18:00	WIN-12	ECE	UN	OTF	7	714
E720532875	12/25/2005	14:24:00	RPT-22	ECD	TO	OFU	50	2,550
E766106396	12/25/2005	14:28:00	RPT-22	ECD	TF	OCO	18	954
E832003012	12/25/2005	14:38:00	SHE-25	ECE	TO	OTF	12	5,988
E380558857	12/25/2005	14:41:00	VIK-25	EAA	EF	OSV	1	83
E773661175	12/25/2005	14:56:00	WLS-16	EAC	TO	OTR	1	49
E885757941	12/25/2005	15:20:00	MUR-15	ECE	TF	OFU	14	1,638
E532175171	12/25/2005	15:22:00	HAZ-13	EBE	TF	OCO	1	80
E825320628	12/25/2005	15:28:00	QUI-25	ECF	TO	OCO	2	1,188
E778547475	12/25/2005	15:29:00	EGT-12	EBE	TF	OCO	1	84
E510542310	12/25/2005	15:32:00	MUR-16	ECE	TF	OTR	5	90
E903315555	12/25/2005	15:47:00	SUM-15	EAC	TO	OTR	1	113
E077608611	12/25/2005	16:00:00	IRO-13	ECF	TF	OCO	10	3,020
E685054721	12/25/2005	16:09:00	RPT-16	ECD	TF	OSV	1	231
E559128289	12/25/2005	16:21:00	FLD-15	EAD	EF	OCO	3	387
E604985763	12/25/2005	16:29:00	JUA-14	EBD	TO	OCO	26	3,978
E914115976	12/25/2005	16:31:00	NLM-13	EAC	TO	OCN	1	29
E548717499	12/25/2005	16:36:00	SIL-16	ECD	TO	OFU	24	6,336
E089030467	12/25/2005	16:57:00	RPT-22	ECD	TO	OCO	6	858
E167141383	12/25/2005	17:00:00	EPO-12	ECD	TO	OFU	25	15,000
E597046782	12/25/2005	17:02:00	HAM-13	EAC	TO	OCO	31	4,185
E473771751	12/25/2005	17:06:00	BRO-16	EAD	EF	OCO	2	186
E078602511	12/25/2005	17:22:00	EGT-12	EBE	TF	OCO	5	2,675
E082725795	12/25/2005	17:26:00	NLM-15	EAC	TO	OTR	2	398
E003667681	12/25/2005	17:39:00	LON-22	ECC	EF	OTF	5	598
E238725769	12/25/2005	17:41:00	PET-15	EAC	TF	OCO	1	72
E297333731	12/25/2005	17:54:00	SKE-23	ECE	TF	OCO	17	7,667
E881258733	12/25/2005	18:00:00	PMA-16	ECE	TO	OFU	237	21,330
E332297550	12/25/2005	18:00:00	CHR-22	ECE	TF	OCO	50	26,000
E438845728	12/25/2005	18:04:00	IRO-17	ECF	EF	USV	1	944
E817516722	12/25/2005	18:07:00	BHL-12	ECE	TF	OCO	34	21,862
E468307133	12/25/2005	18:25:00	SHD-18	EBI	EF	USV	1	66
E766346875	12/25/2005	18:50:00	SIL-15	ECE	TO	OFU	80	800
E644573153	12/25/2005	18:53:00	SKE-26	ECE	TO	OCO	5	3,760
E477313844	12/25/2005	18:54:00	EPO-12	ECD	TO	OCO	1	1,036
E547482983	12/25/2005	19:00:00	HAM-15	EAC	TO	OUP	3	432
E732354237	12/25/2005	19:05:00	WOO-27	ECA	EF	OTF	4	494
E862650827	12/25/2005	19:19:00	RPT-22	ECD	TO	UTC	2,352	326,697
E010474188	12/25/2005	19:21:00	LGY-16	EAD	TO	OTR	1	34
E524295382	12/25/2005	19:23:00	BIG-12	EAC	TO	OCO	157	49,298
E992776936	12/25/2005	19:39:00	SIL-15	ECE	TF	OCO	71	35,216
E701607143	12/25/2005	19:45:00	ROL-15	EBJ	PO	OSV	1	116
E625475213	12/25/2005	20:37:00	POU-16	ECE	EF	OTR	5	5,165
E028704162	12/25/2005	21:03:00	CHR-22	ECE	TF	OCO	18	5,886
E099155460	12/25/2005	21:10:00	NNO-12	EBJ	TF	OTF	7	522
E346013482	12/25/2005	21:15:00	YEL-26	ECC	TF	OTF	1	80
E187209732	12/25/2005	21:18:00	BCH-15	EAA	TF	OTR	2	120
E356532256	12/25/2005	21:19:00	VAS-12	EBL	TO	OCO	6	1,656
E390933082	12/25/2005	21:25:00	EPO-13	ECD	TF	OCO	81	57,915
E560729215	12/25/2005	21:35:00	LYN-24	EAA	TF	OTR	5	402

Qualifying Storm Event  
December 25, 2005

Notification	Date	Time	Circuit	Area	Cause	Equipment	Cust Outs	Cust Mins
E427024477	12/25/2005	21:49:00	IRO-13	ECF	TF	OCO	1	1
E043680737	12/25/2005	21:52:00	HAM-13	EAC	EF	OTR	1	58
E052479798	12/25/2005	22:17:00	MIL-22	ECE	TO	OCO	14	3,542
E470663139	12/25/2005	22:19:00	PLG-13	ECC	TO	OCO	10	1,199
E450982205	12/25/2005	22:26:00	PGA-13	ECE	TF	OCO	2	1,228
E351668234	12/25/2005	22:35:00	BON-17	ECA	EF	OTF	1	107
E814694443	12/25/2005	23:17:00	PMA-13	ECE	TF	OCO	5	3,915

## Terms, Codes and Definitions Used on Detail Reports

<b>Notification</b>	<b>[Notification Number]</b> A number assigned by SAP, identifying the outage record
<b>Date</b>	The date of the outage
<b>Time</b>	The time of the outage
<b>Circuit</b>	<b>[Reference Circuit]</b> The circuit identifier for the affected circuit
<b>F/LOC</b>	<b>[Functional Location]</b> The grid number where the outage occurred. If the grid number is not available, the Reference Circuit identifier occupies this field
<b>EQT NBR</b>	<b>[Equipment Number]</b> A number used to tie the equipment involved in the outage to the related information in SAP. This number does not represent the physical number of the equipment

<b>Area</b>	<b>[Maintenance Planner Group]</b> A code representing the energy, region and service center	
	EAA – Bellingham	EBJ – South King
	EAB – Lynden	EBK – Southwest King
	EAC – Skagit	EBL – Vashon
	EAD – Whidbey	ECA – Puyallup
	EBD – Redmond	ECC – Olympia
	EBE – Factoria	ECD – Port Orchard
	EBF – Snoqualmie	ECE – Poulsbo
	EBI – Enumclaw	ECF – Port Townsend

<b>Cause</b>	Cause of Outage	
	AO – Accident Other	EF – Equipment Failure
	BA – Bird or Animal	EO – Electrical Overload
	CP – Car Pole	TF – Tree Off Right-of-Way
	CR – Customer Request	TO – Tree On Right-of-Way
	DU – Dig-up Underground	UN – Unknown
	SO – Scheduled Outage	

<b>Equipment</b>	Affected by, or involved in the outage	
	OCN – Connector	OSW – Overhead Switch
	OCO – Overhead Conductor	OTF – Overhead Transformer Fuse
	OCR – Crossarm	OTR – Overhead Transformer
	OFC – Overhead Cut-out	OUP – OH to UG Primary
	OFS – Overhead Fire Signal	OUS – OH to UG Secondary Service
	OFU – Fuse Link/OH Line Fuse	SBF – High-side Bank Fuse
	OGS – Span Guy	SCB – Power Circuit Breaker
	OHR – Overhead Recloser	UOT – Underground Outdoor Term
	OIN – Insulator	UPC – Underground Primary Cable
	OJU- Jump Wire	UPT – Padmount Transformer
	OPO – Pole	USV – Underground Service
	OSV – Overhead Service	UTC – Underground Terminal Fuse
	ORE – Regulator	UTR – Submersible Transformer

**Codes, Definitions – Continued**

<b>CUST OUT</b>	<b>[Customer Out]</b> The number of customers without power for any given outage record
<b>CUST MIN</b>	<b>[Customer Minutes]</b> The total number of minutes customers were without power for any given record
<b>CODE</b>	<b>[Storm Code]</b> An event descriptor
	NON – Non Storm / Normal Conditions
	WTH – Weather Related (eg: wind storm, showers, etc)
	MAJ – Major event



## Newsprint Media Coverage



### **High winds cut electricity to thousands**

By Seattle Times staff and news services

High winds downed trees and power lines Sunday, cutting electricity to thousands of homes across the region.

There were no immediate reports of serious damage or injuries. Wind gusts reached up to 50 miles an hour.

At the peak of the outages Sunday morning, about 20,000 Puget Sound Energy customers in King, Pierce, Thurston, Kitsap, Lewis, Whatcom, Island and Skagit counties had lost power, said Lynn Carlson, a spokeswoman for the utility.

In Seattle, about 250 customers in Magnolia, Beacon Hill and Skyway were without power most of the day. Seattle City Light spokesman Larry Vogel said downed branches and other wind-related problems caused the outages, and that all power was restored by 6 p.m.

Higher-than-normal temperatures and rainfall also broke some records for the second day in a row.

The National Weather Service recorded a high temperature of 55 degrees at the Sand Point observation station in Seattle, breaking the previous Christmas Day record of 52 degrees set in 2002.

Rainfall at Sand Point was 0.87 inch through midevening, breaking the record of 0.79 inch set in 1998. The station has recorded weather since the 1980s.

Sunday's heat and rainfall weren't quite enough to topple records set at the region's main recording station in SeaTac.

The National Weather Service had flood warnings and watches out for several rivers around Mount Rainier on Sunday, but meteorologist Allen Kam said the major precipitation appeared to be over Sunday night and river levels were slowly receding.

Power had been restored to all but about 5,000 homes across the region by 8 p.m. PSE expected to restore power to most of the remaining customers, primarily in Kitsap County, by the end of the day, Carlson said. She warned that some isolated customers might not get power restored until this morning.

In Oregon, Portland General Electric said 30,000 of its customers lost power at the peak of the windstorm.

PGE spokeswoman Ariana White said power was restored to all but 4,000 of those customers by 3:30 p.m., and most of the remainder — most of them southeast of Portland and in eastern Multnomah County — should be back on line by the end of the day.

Back in Washington state, the Snohomish County Public Utility District said about 4,500 of its customers lost power. Outages were reported on Camano Island, in Arlington and Marysville, and at other scattered locations.

The National Weather Service said Saturday's high of 62 degrees at SeaTac broke the previous record of 55 degrees set in 1950. Three days after the official start of winter, the temperature climbed to 63 degrees in Tacoma — tying a record set 22 years ago.

| **The Seattle Times**

**WHAT'S NEW** |

SATURDAY, DECEMBER 31, 2005

**PSE to the rescue**

## **Sherry Grindeland**

*Seattle Times*  
*Eastside columnist*

### **Big thanks**

Susan Bond and her family in North Bend were among the thousands without power on Christmas Day after a wind-storm swirled through the region.

"Thanks to all those Puget Sound Energy crews who gave up their Christmas morning with children and grandchildren to restore power," Bond said. "We are truly grateful."

*Sherry Grindeland: 206-515-5633 or  
sgrindeland@seattletimes.com*