

SUSF Criterion Two Supported Broadband Locations



SUSF Locations

SUSF Locations - Broadband Speed

- 100/25 Mbps
- 100/50 Mbps
- 50/10 Mbps
- 50/5 Mbps
- 25/5 Mbps
- 25/3 Mbps

Criterion II Study Areas

Companies

- Asotin Telephone Company
- Consolidated Communications of WA Co., LLC
- Inland Telephone Company
- Kalama Telephone Company
- Lewis River Telephone Company, Inc.
- McDaniel Telephone Company
- Pend Oreille Telephone Company
- Westgate Communications LLC

Eight Companies previously petitioned the UTC for Support under eligibility criterion two. Each company has committed to deploying 25/3 Mbps (or faster) broadband consistent with UTC Broadband Buildout requirement by June 30, 2024.

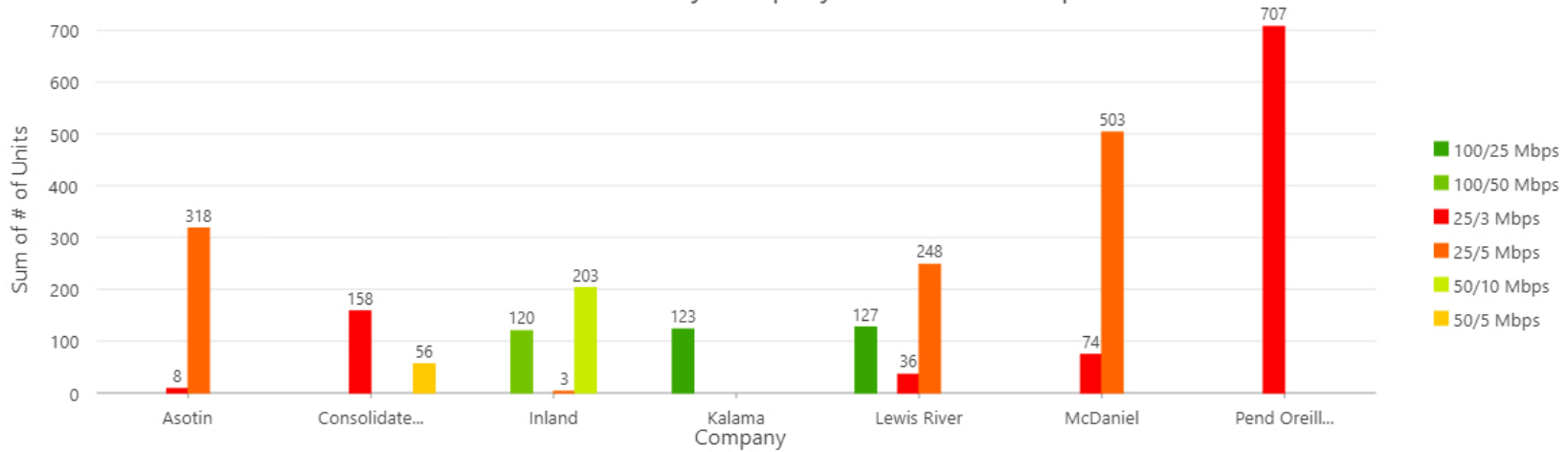
Six companies (Inland, Asotin, Lewis River, McDaniel, Kalama, and Pend Oreille) have met its UTC Broadband Buildout requirement.

Consolidated deployed to 214 of its 398 UTC Broadband Buildout requirement.

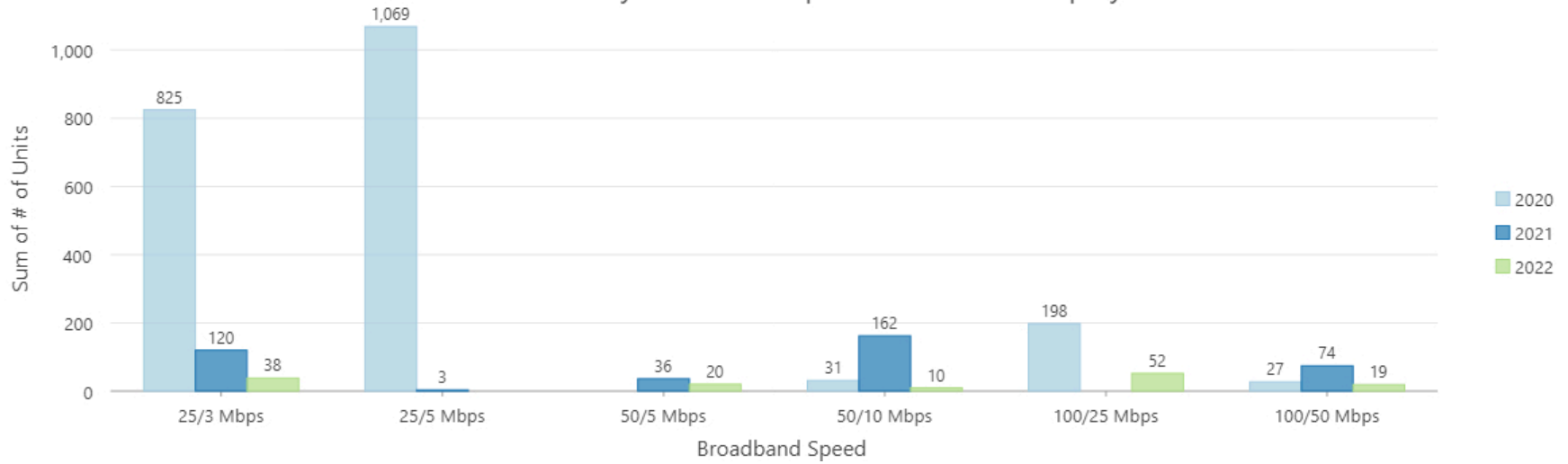
Westgate deployed to 0 of its 70 UTC Broadband Buildout requirement. The company's new KU satellite will provide sufficient backhaul to offer 25/3 Mbps broadband service.

SUSF Supported Broadband Location

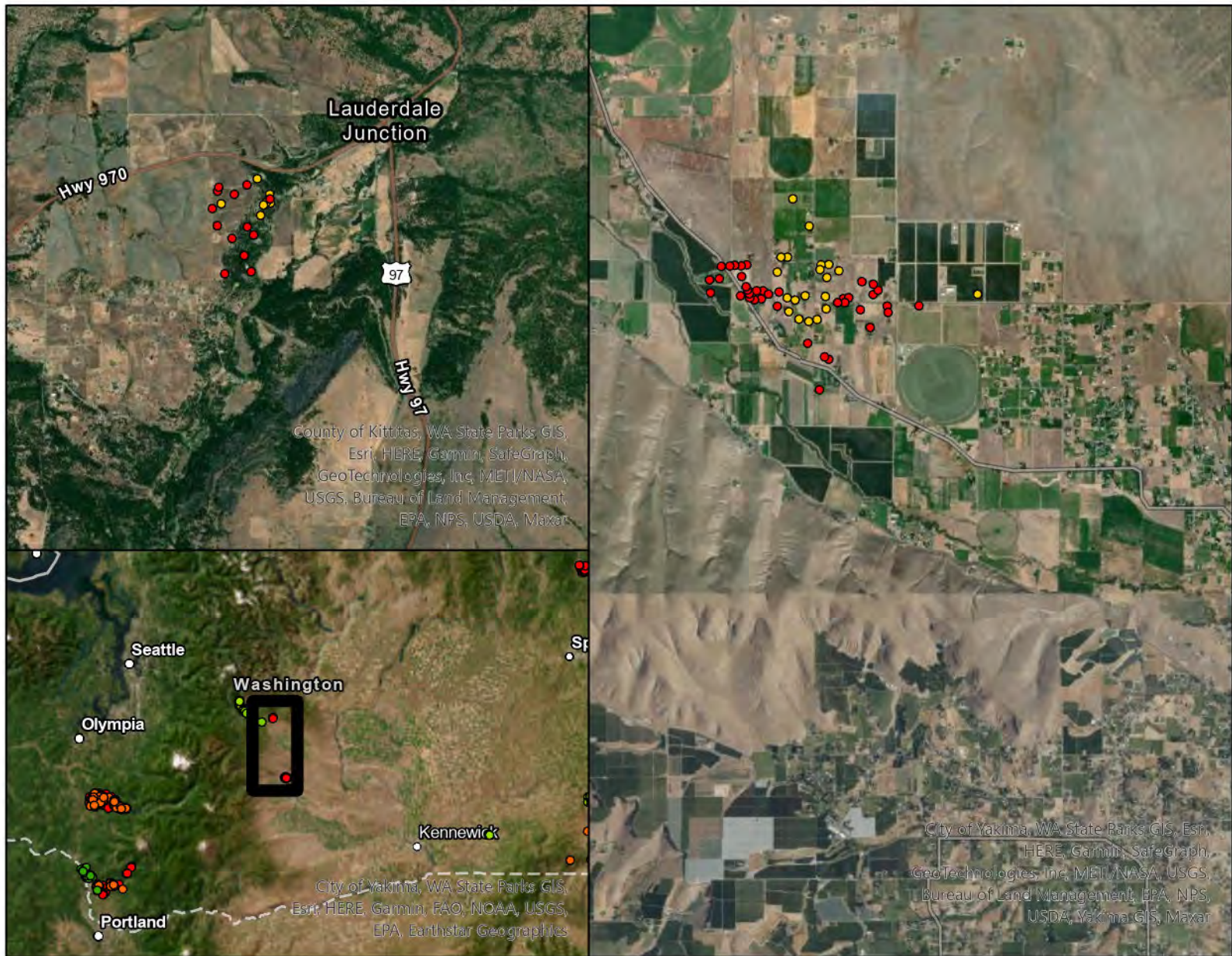
Sum of # of Units by Company and Broadband Speed



Sum of # of Units by Broadband Speed and Date of Deployment



Consolidated's SUSF Supported Broadband Locations



SUSF Locations

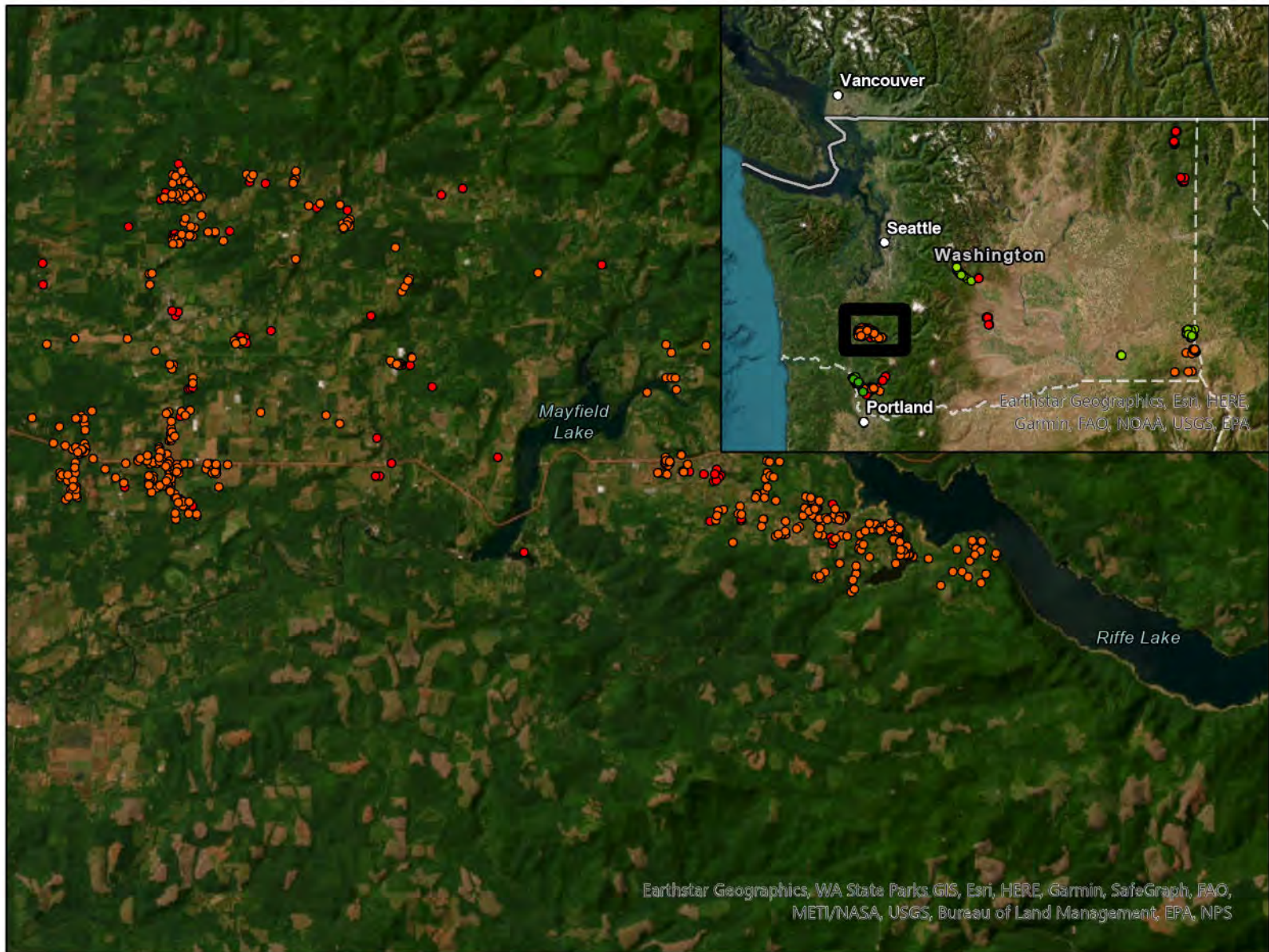
SUSF Locations - Broadband Speed

- 100/25 Mbps
- 100/50 Mbps

- 50/10 Mbps
- 50/5 Mbps
- 25/5 Mbps
- 25/3 Mbps

Consolidated has a SUSF UTC Broadband Buildout requirement of 398 locations by June 30, 2024. Consolidated has provided coordinates for 214 locations to which it has deployed 25/3 Mbps (or faster) broadband to during the 2022 fiscal year. This consist of 158 locations with 25/3 Mbps capability and 56 locations with 50/5 Mbps broadband capability.

McDaniel's SUSF Supported Broadband Locations



SUSF Locations - Broadband Speed

- 100/25 Mbps
- 100/50 Mbps
- 50/10 Mbps
- 50/5 Mbps
- 25/5 Mbps
- 25/3 Mbps

McDaniel has a SUSF UTC Broadband Buildout requirement of 350 locations by June 30, 2024. McDaniel has provided coordinates for 577 locations to which it has deployed 25/3 Mbps (or faster) broadband to during the 2021 fiscal year. This consist of 74 locations with 25/3 Mbps capability and 503 locations with 25/5 Mbps capability.

Pend Oreille's SUSF Supported Broadband Locations



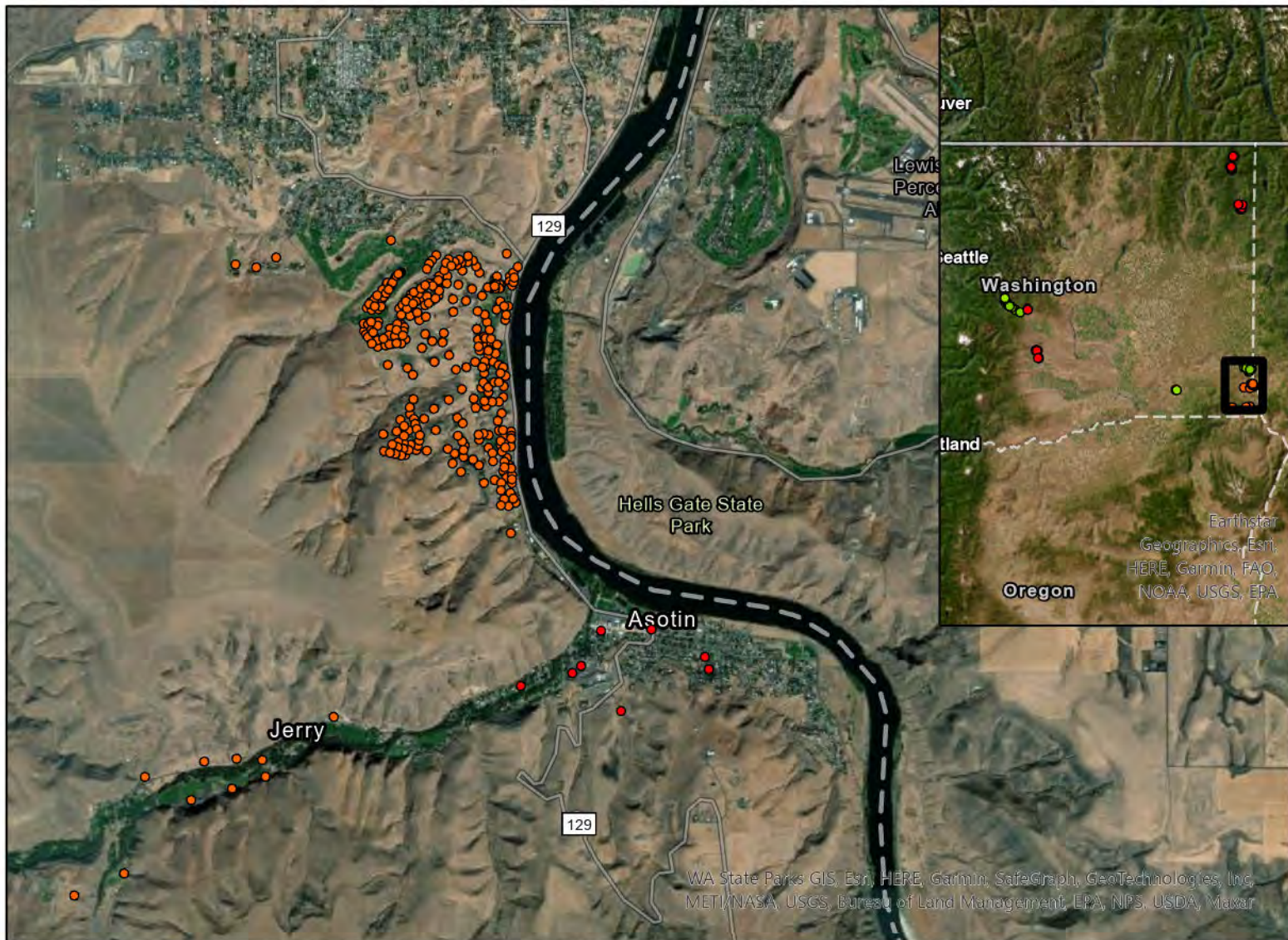
SUSF Locations

SUSF Locations - Broadband Speed

- 100/25 Mbps
- 100/50 Mbps
- 50/10 Mbps
- 50/5 Mbps
- 25/5 Mbps
- 25/3 Mbps

Pend Oreille has a SUSF UTC Broadband Buildout requirement of 228 locations by June 30, 2024. Pend Oreille has provided coordinates for 707 locations to which it has deployed 25/3 Mbps (or faster) broadband during the 2020-2022 fiscal years. This consist of 707 locations with 25/3 Mbps capability.

Asotin's SUSF Supported Broadband Locations



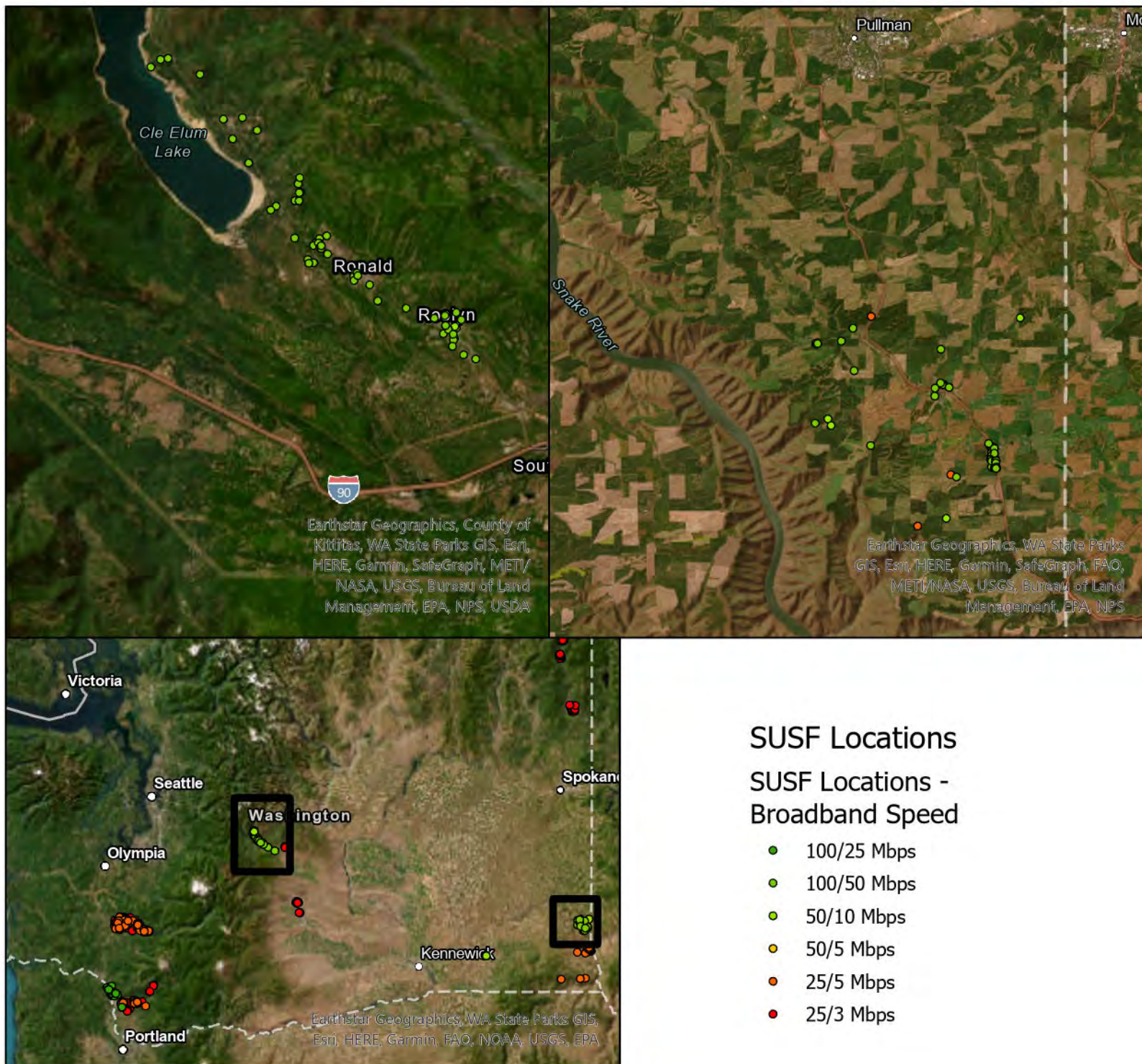
SUSF Locations

SUSF Locations - Broadband Speed

- 100/25 Mbps
- 100/50 Mbps
- 50/10 Mbps
- 50/5 Mbps
- 25/5 Mbps
- 25/3 Mbps

Asotin has a SUSF UTC Broadband Buildout requirement of 26 locations by June 30, 2024. Asotin has provided coordinates for 326 locations to which it has deployed 25/3 Mbps (or faster) broadband to during the 2021 fiscal year. This consist of eight locations with 25/3 Mbps capability and 318 with 25/5 Mbps capability.

Inland's SUSF Supported Broadband Locations



Inland has a SUSF UTC Broadband Buildout requirement of 254 locations by June 30, 2024. Inland has provided coordinates for 108 locations to which it has deployed 25/3 Mbps (or faster) broadband to during the 2021 fiscal year. This consist of 31 locations with 50/10 Mbps capability and 77 locations with 100/50 Mbps capability.

Inland deployed to an additional 218 locations during the 2022 fiscal year and has met its UTC Broadband Buildout obligation. This consists of of 3 locations with 25/5 Mbps capability, 172 locations with 50/10 Mbps capability, and 43 locations with 100/50 Mbps capability.

Kalama's SUSF Supported Broadband Locations



SUSF Locations

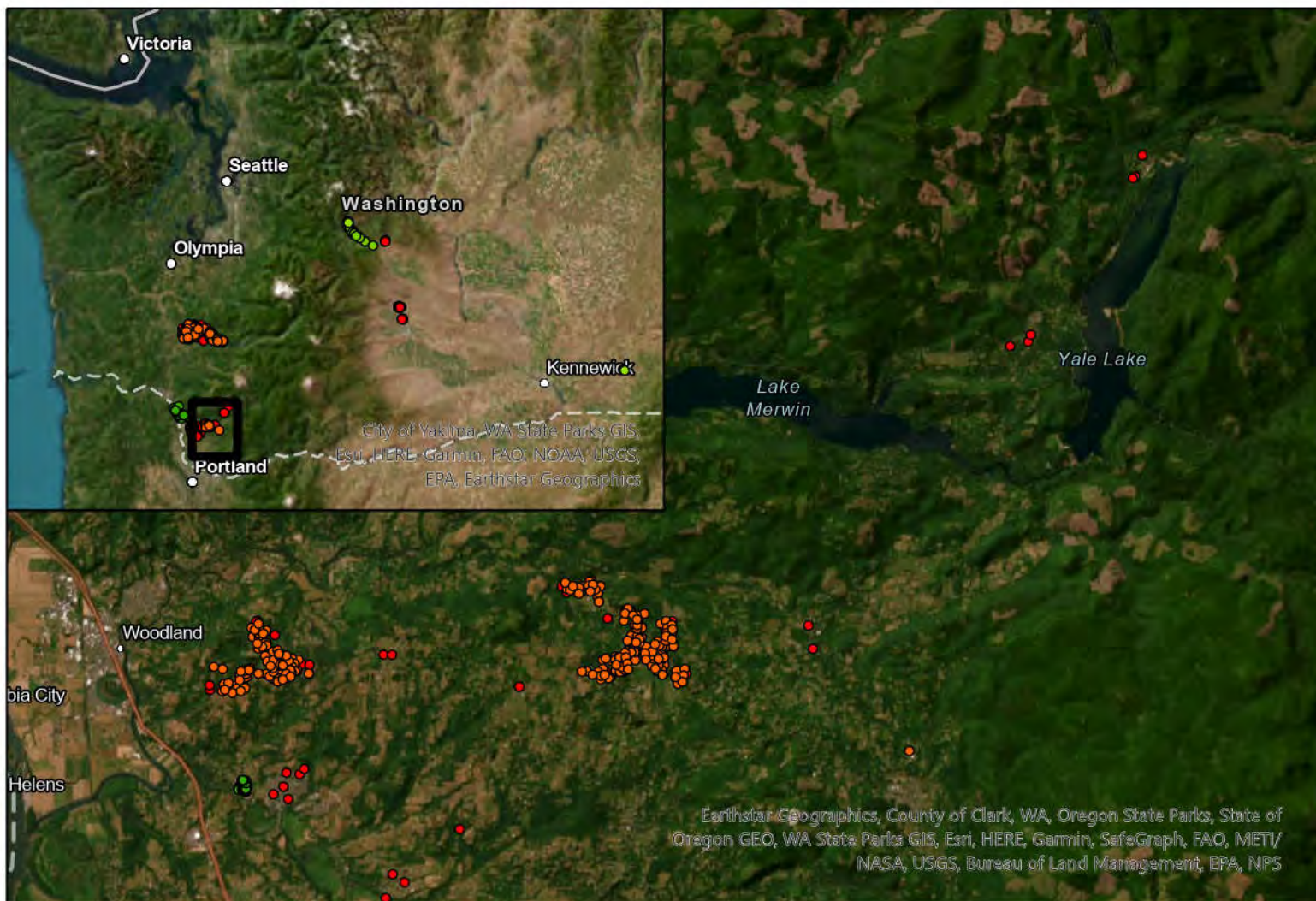
SUSF Locations - Broadband Speed

- 100/25 Mbps
- 100/50 Mbps
- 50/10 Mbps
- 50/5 Mbps
- 25/5 Mbps
- 25/3 Mbps

Kalama has a SUSF UTC Broadband Buildout requirement of 122 locations. Kalama has provided coordinates for 71 locations to which it has deployed broadband to during the 2021 fiscal year. Kalama deployed to 52 locations during the 2022 fiscal year. All locations have 100/25 Mbps capability.

Kalama has met its UTC and high-cost broadband buildout obligation and accordingly filed its petition under eligibility criterion three for the 2023 fiscal year.

Lewis River's SUSF Supported Broadband Locations



SUSF Locations - Broadband Speed

- 100/25 Mbps
- 100/50 Mbps
- 50/10 Mbps
- 50/5 Mbps
- 25/5 Mbps
- 25/3 Mbps

Lewis River has a SUSF UTC Broadband Buildout requirement of 264 locations by June 30, 2024. Lewis River has provided coordinates for 411 locations to which it has deployed 25/3 Mbps (or faster) broadband to during the 2021 fiscal year. This consist of 36 locations with 25/3 Mbps capability, 248 with 25/5 Mbps capability, and 127 with 100/25 Mbps capability.