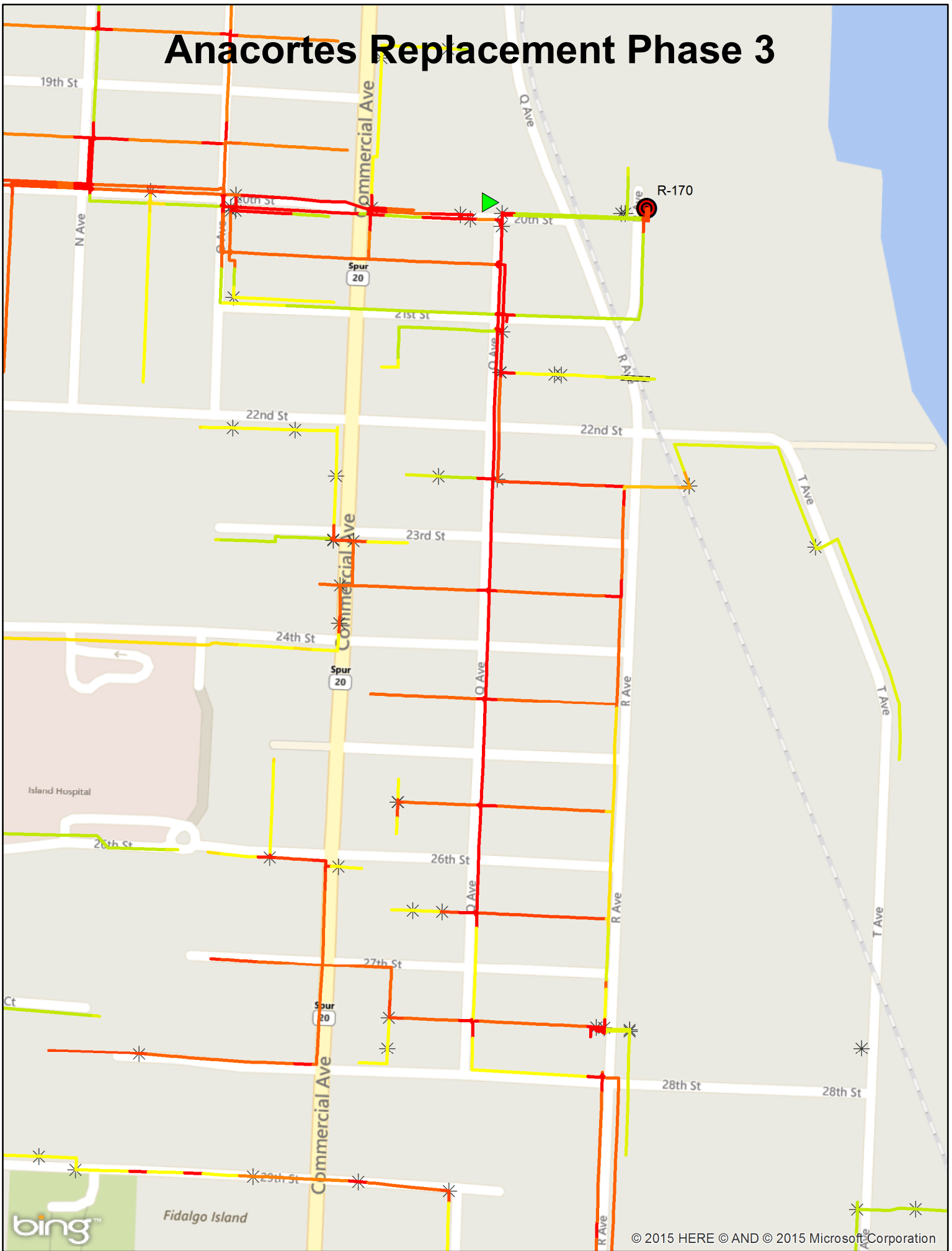


APPENDIX A DIMP MODEL OUTPUT

Areas in red represent highest risk areas.

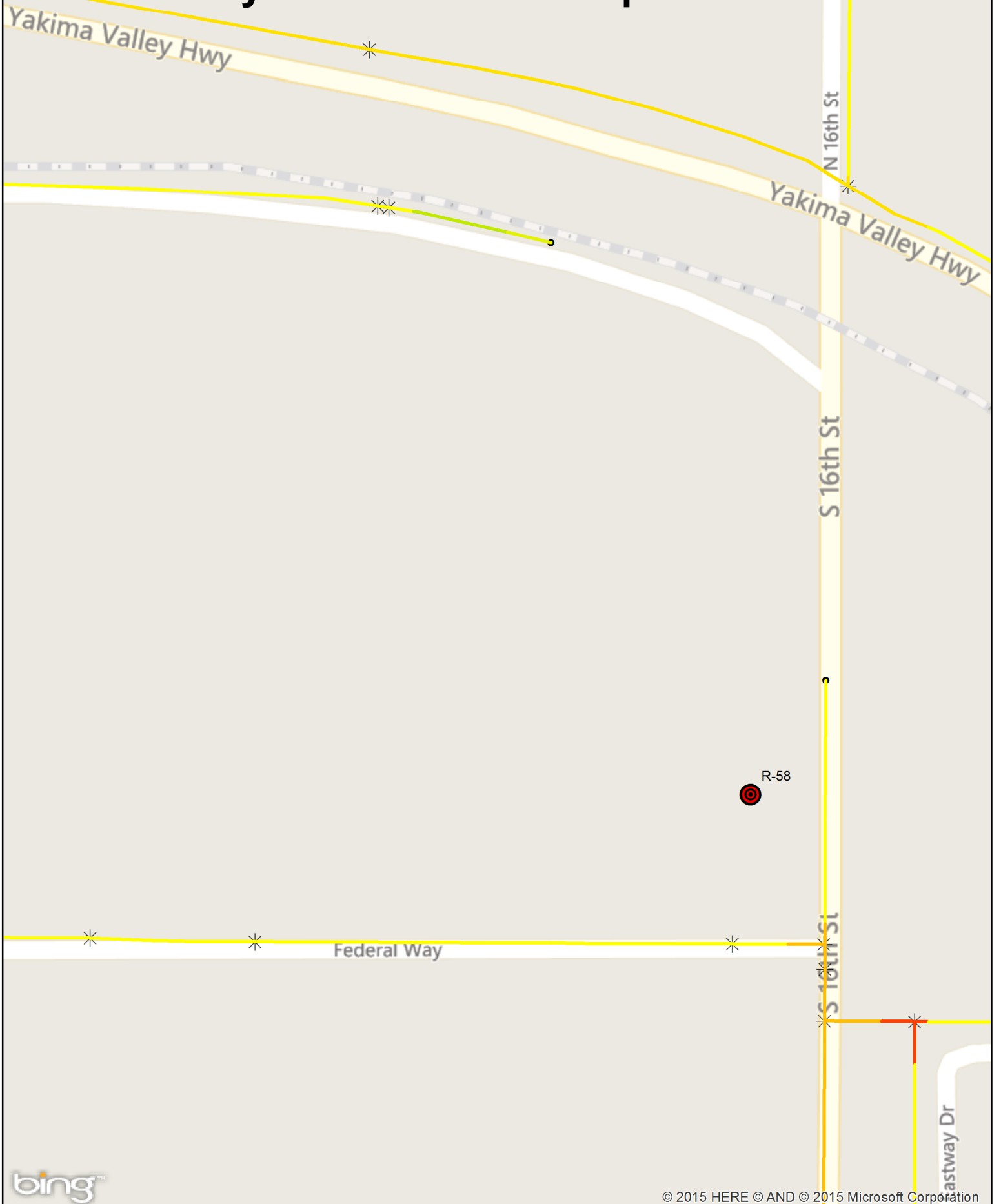
Anacortes Replacement Phase 3



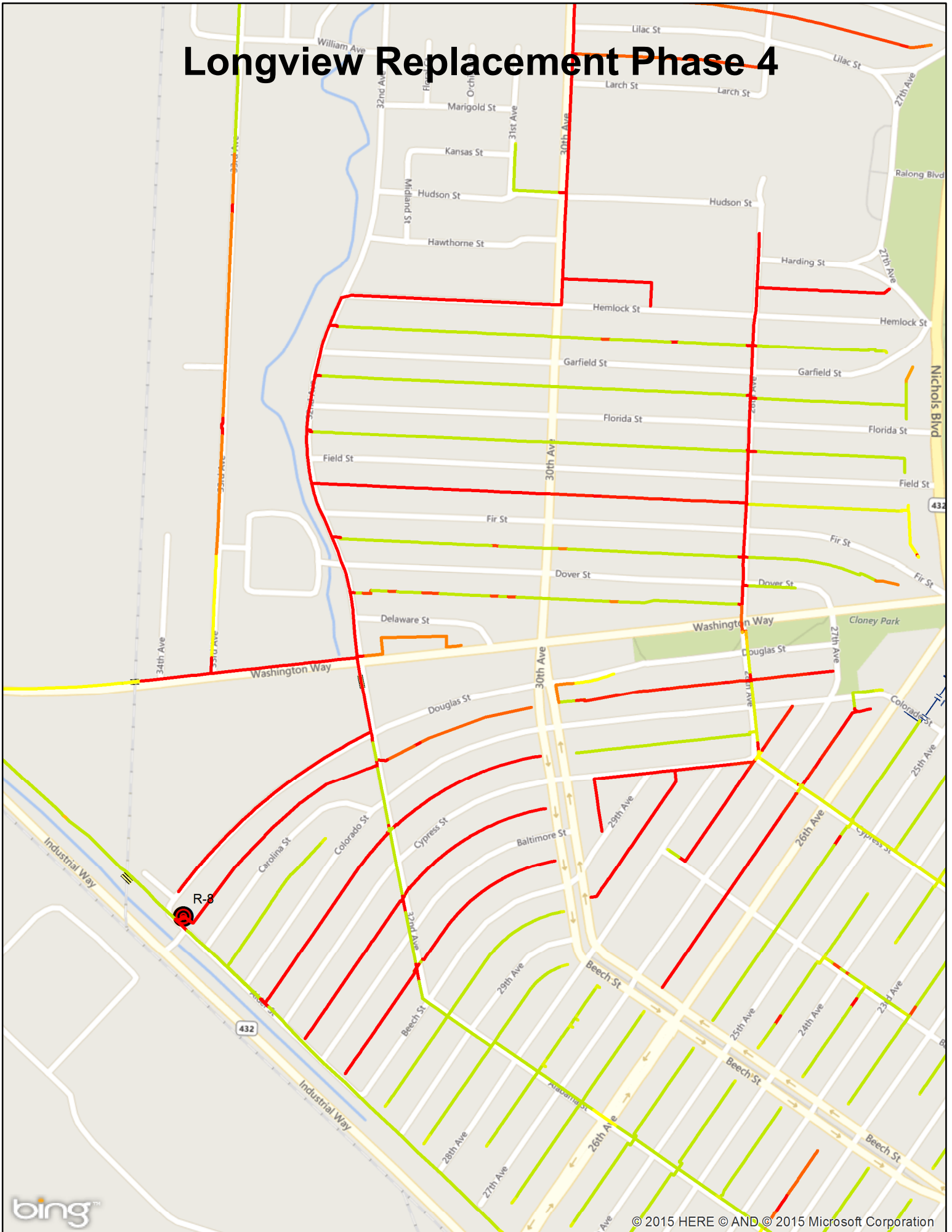
Dakota Creek Bridge Relocate



Sunnyside 2" IP main Replacement



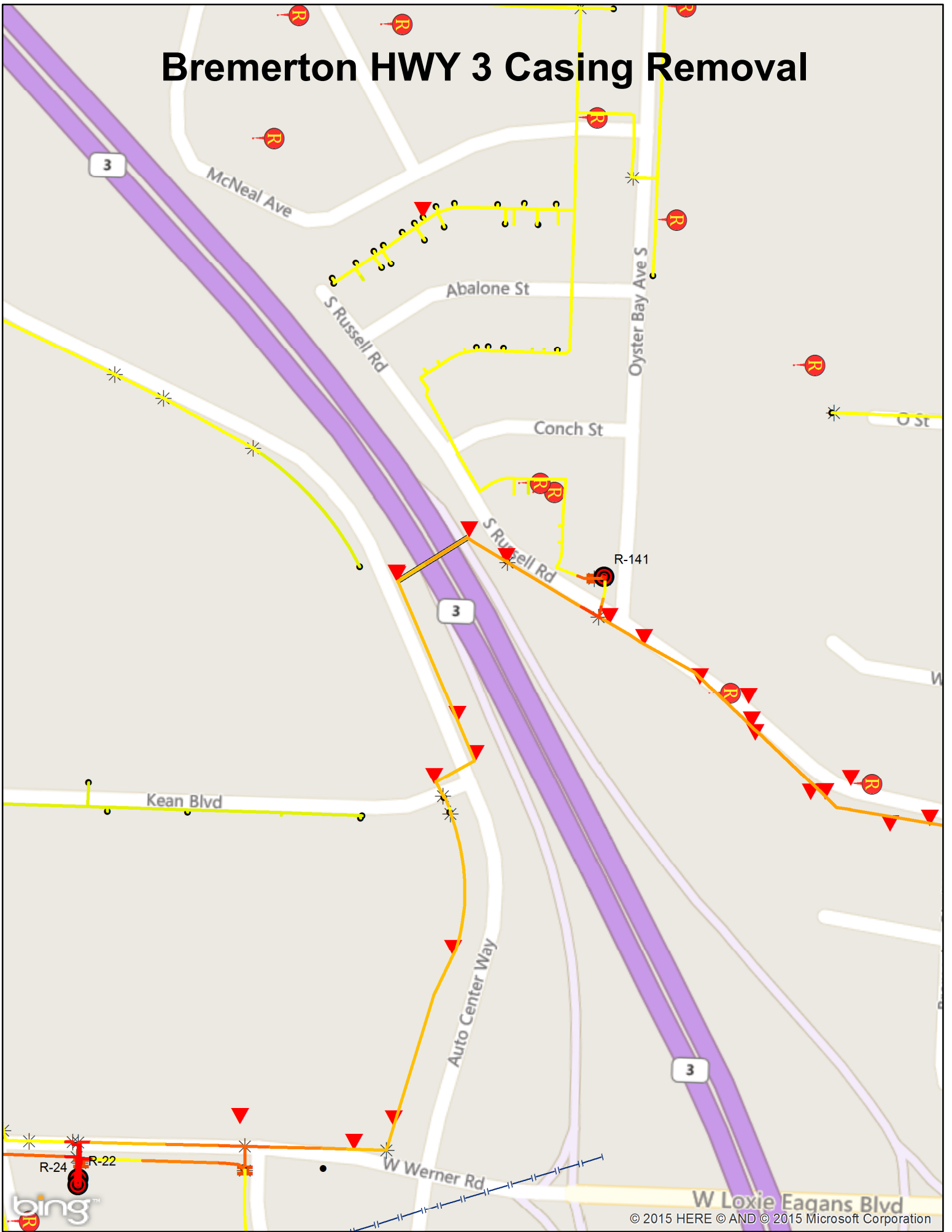
Longview Replacement Phase 4



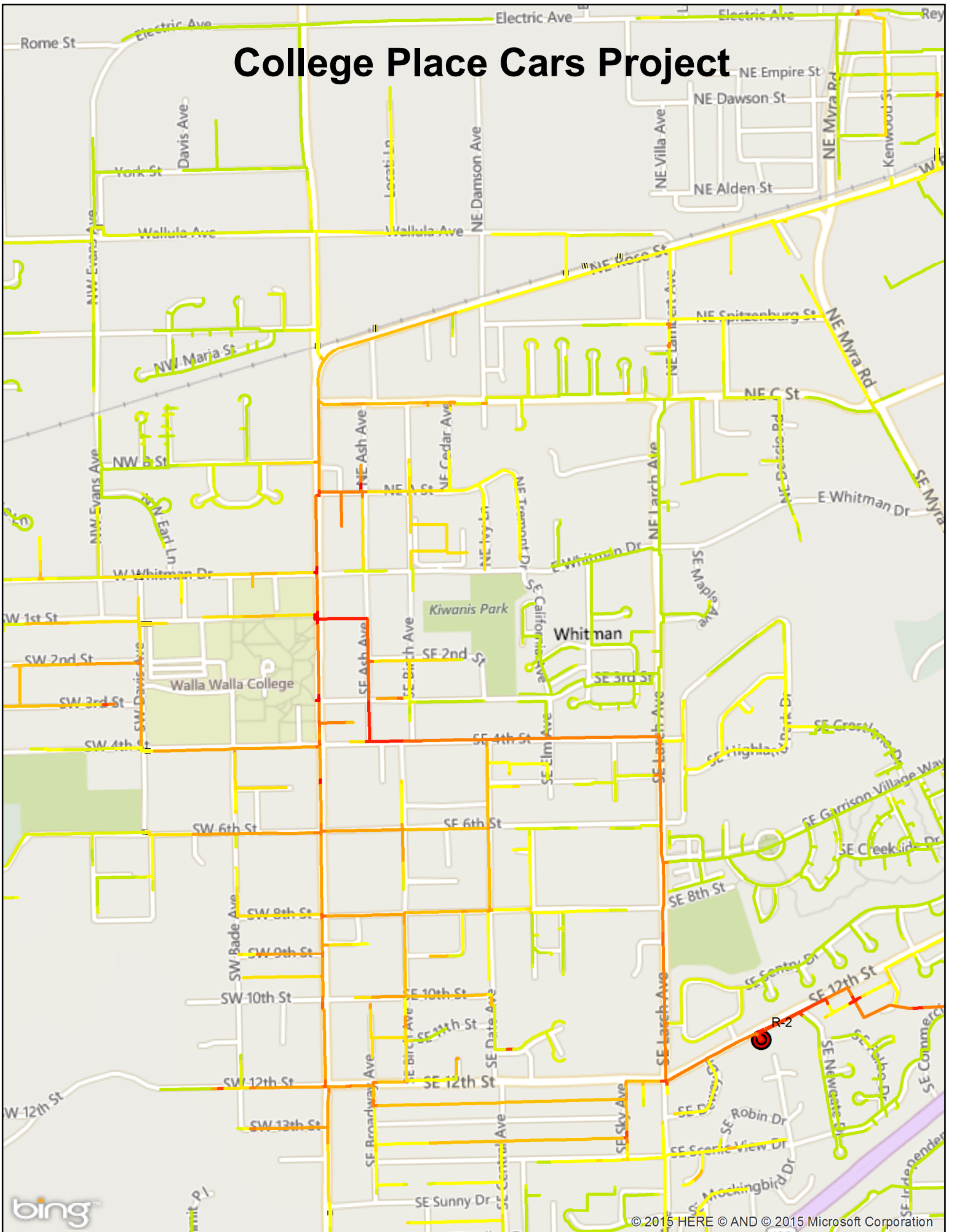
Kelso Mill St Replacement



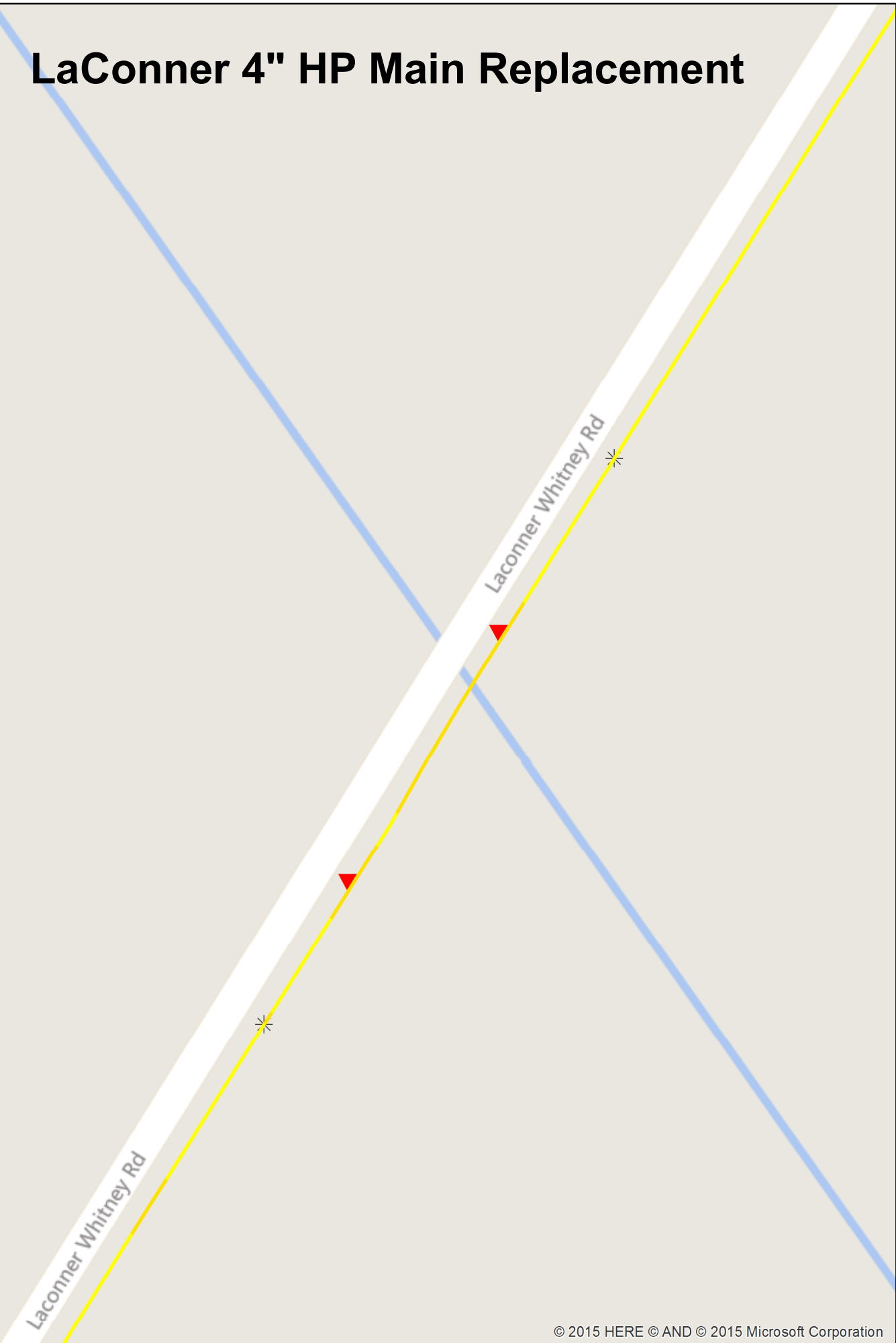
Bremerton HWY 3 Casing Removal



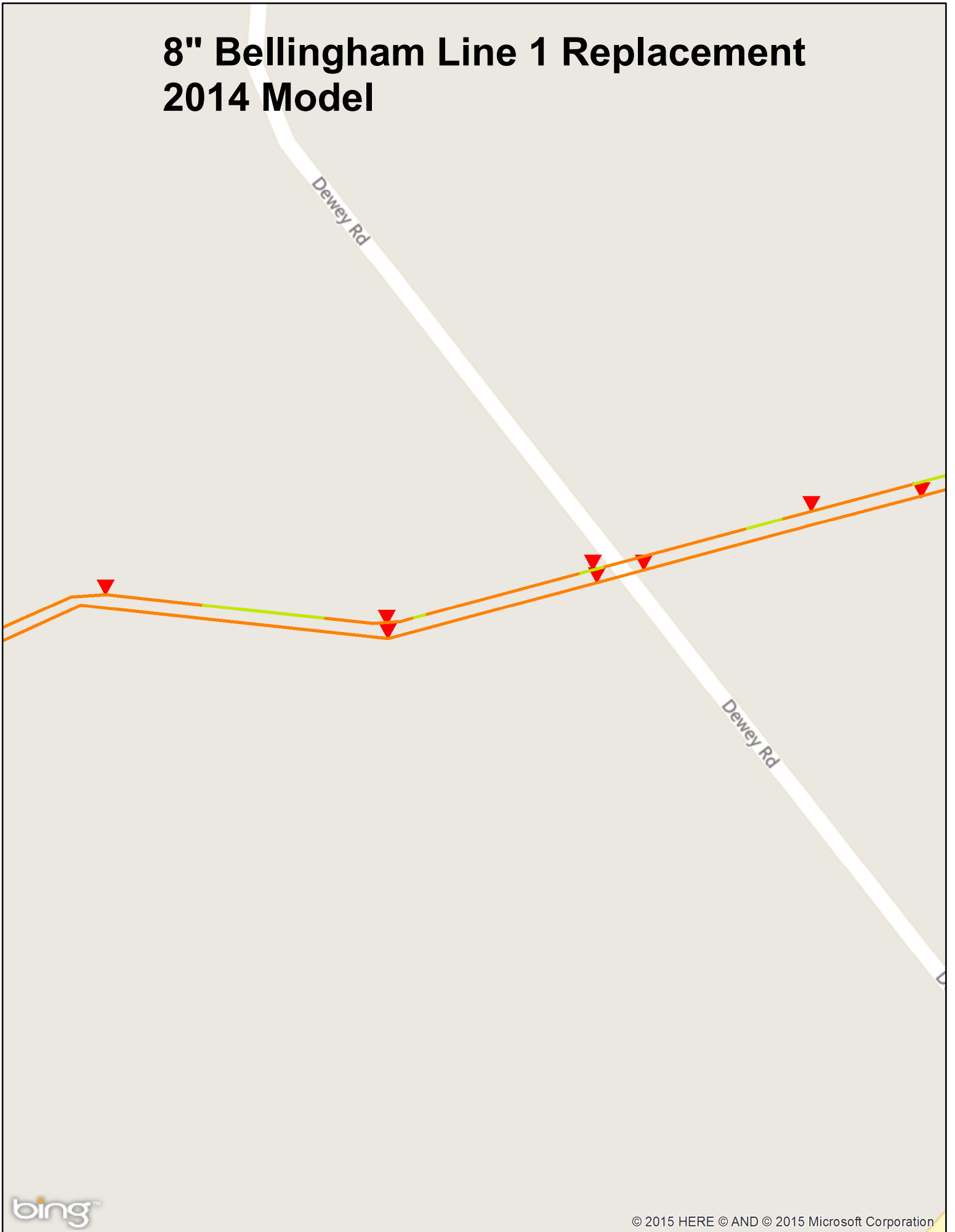
College Place Cars Project



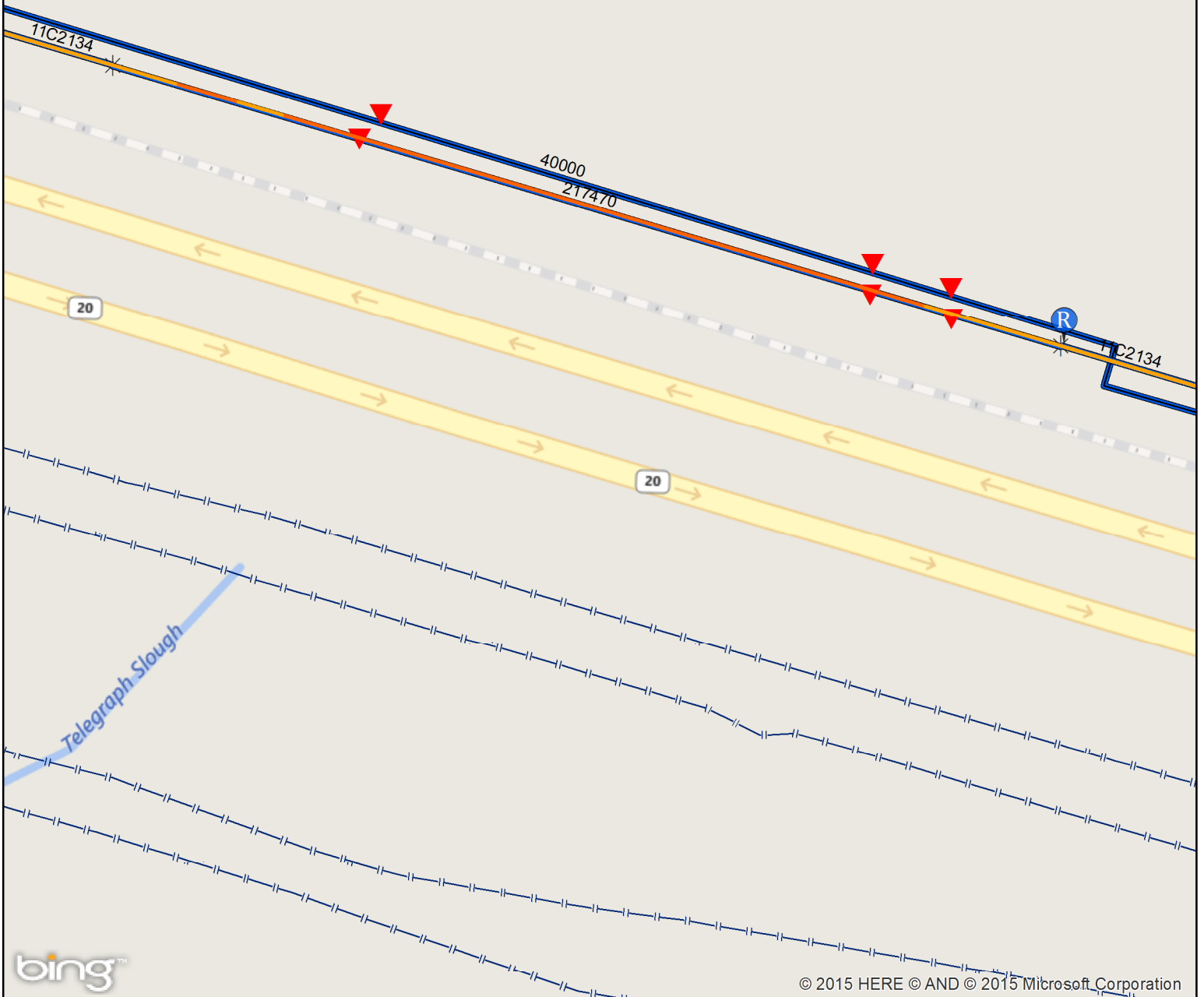
LaConner 4" HP Main Replacement



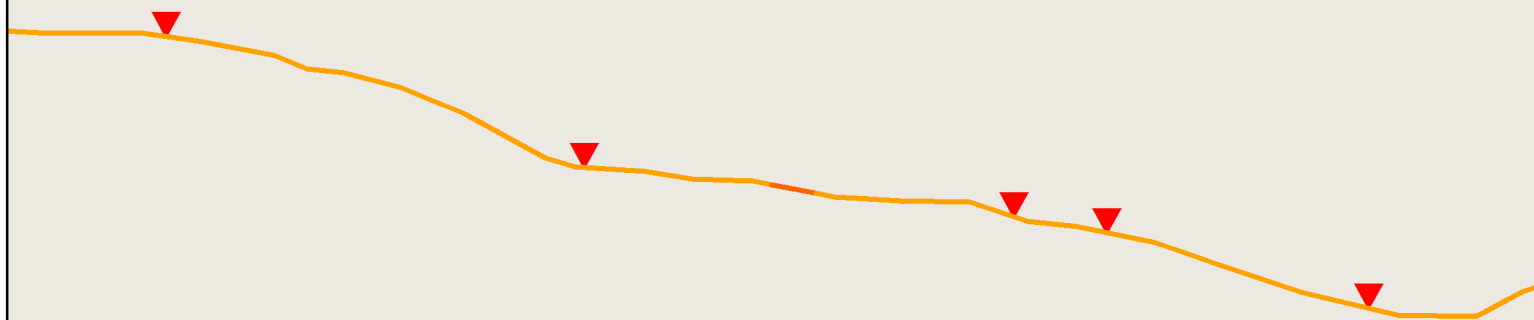
8" Bellingham Line 1 Replacement 2014 Model



8" Burlington HP Bore 2014 Model



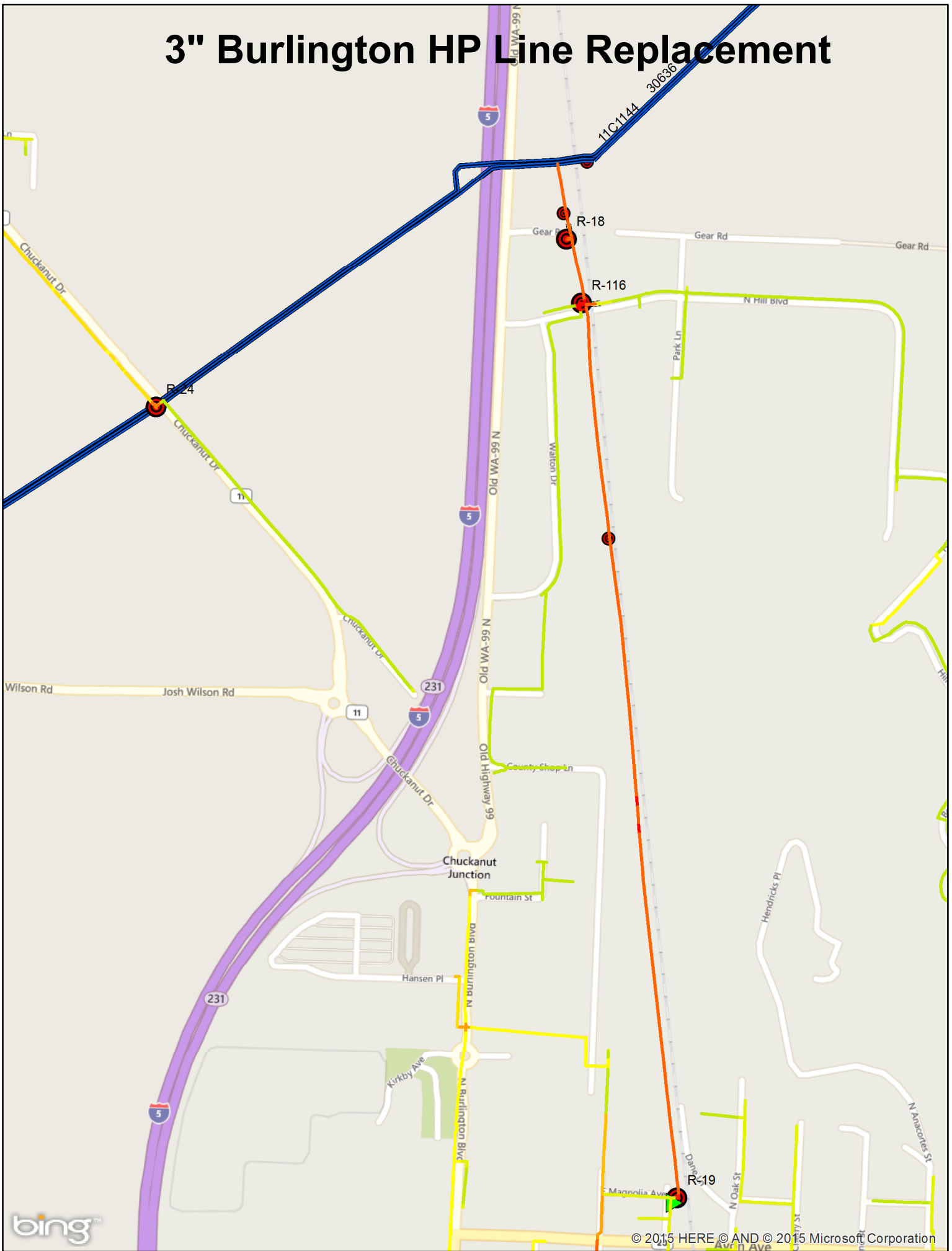
8" Vance Creek Exposure Replacement



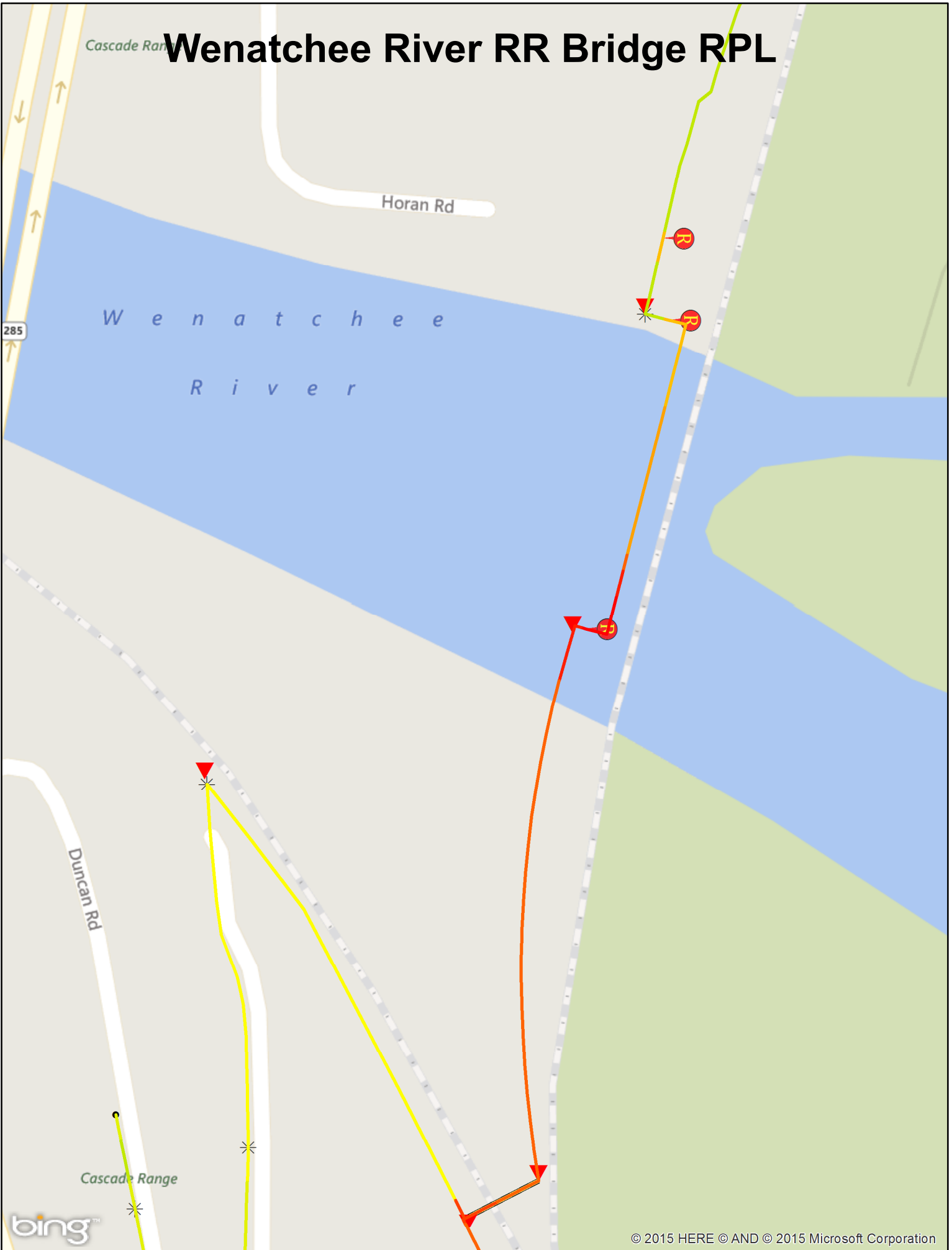
8" Camp Creek Exposure Replacement



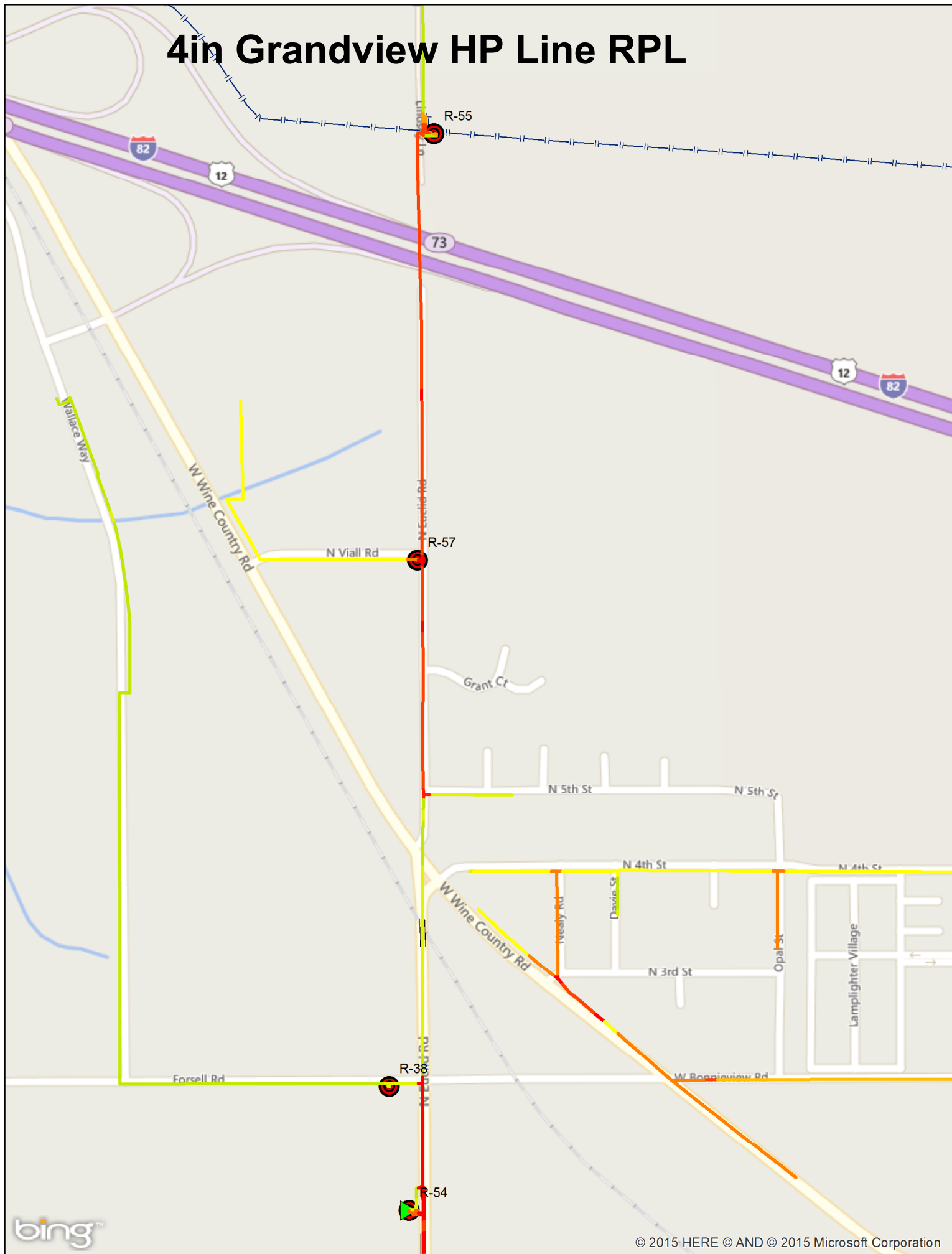
3" Burlington HP Line Replacement



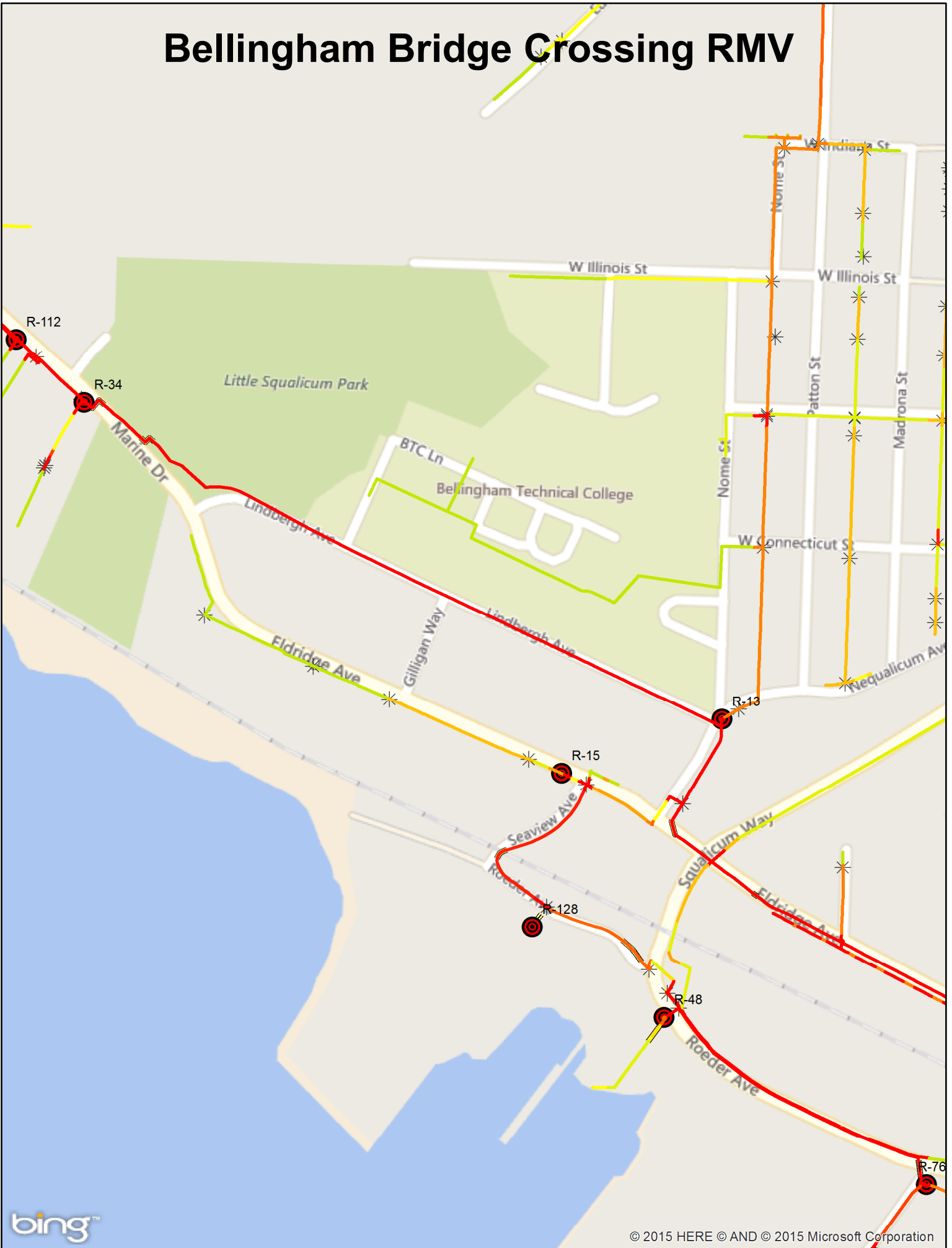
Wenatchee River RR Bridge RPL



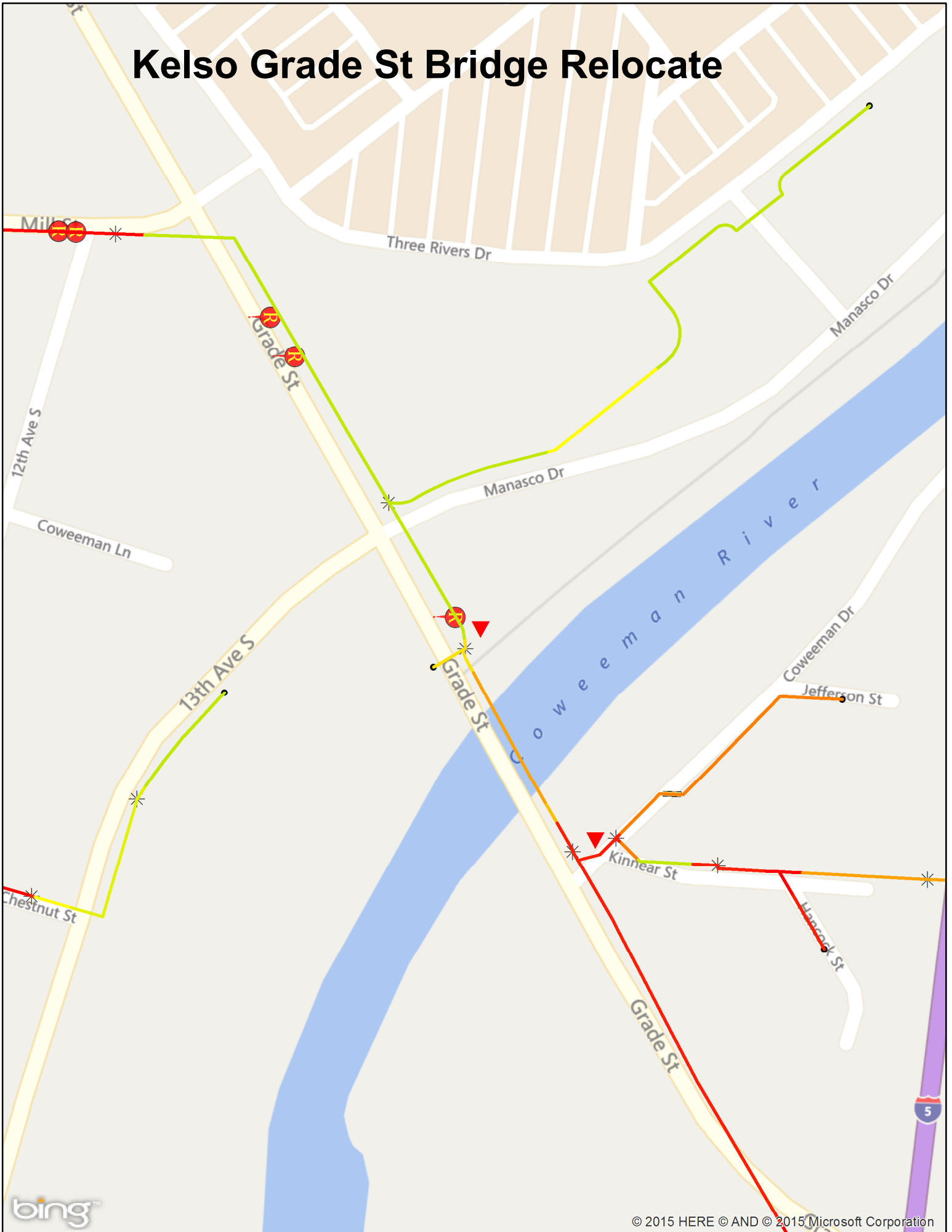
4in Grandview HP Line RPL



Bellingham Bridge Crossing RMV



Kelso Grade St Bridge Relocate



2in Steel IP Bore Belfair PI

7420

2100

W Bonnie Ave

N Belfair PI

Columbia Canal

Columbia Canal

Columbia Canal

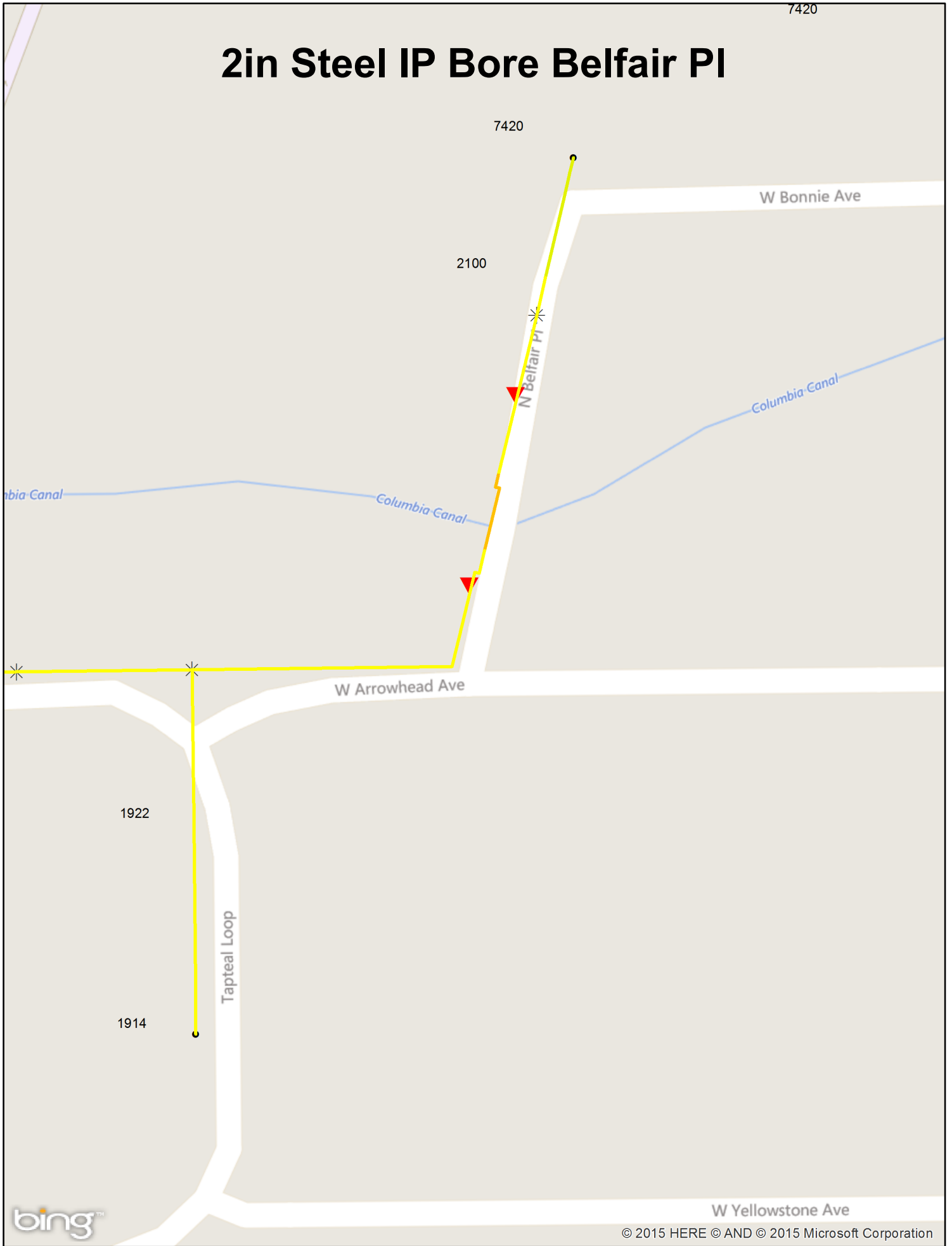
W Arrowhead Ave

1922

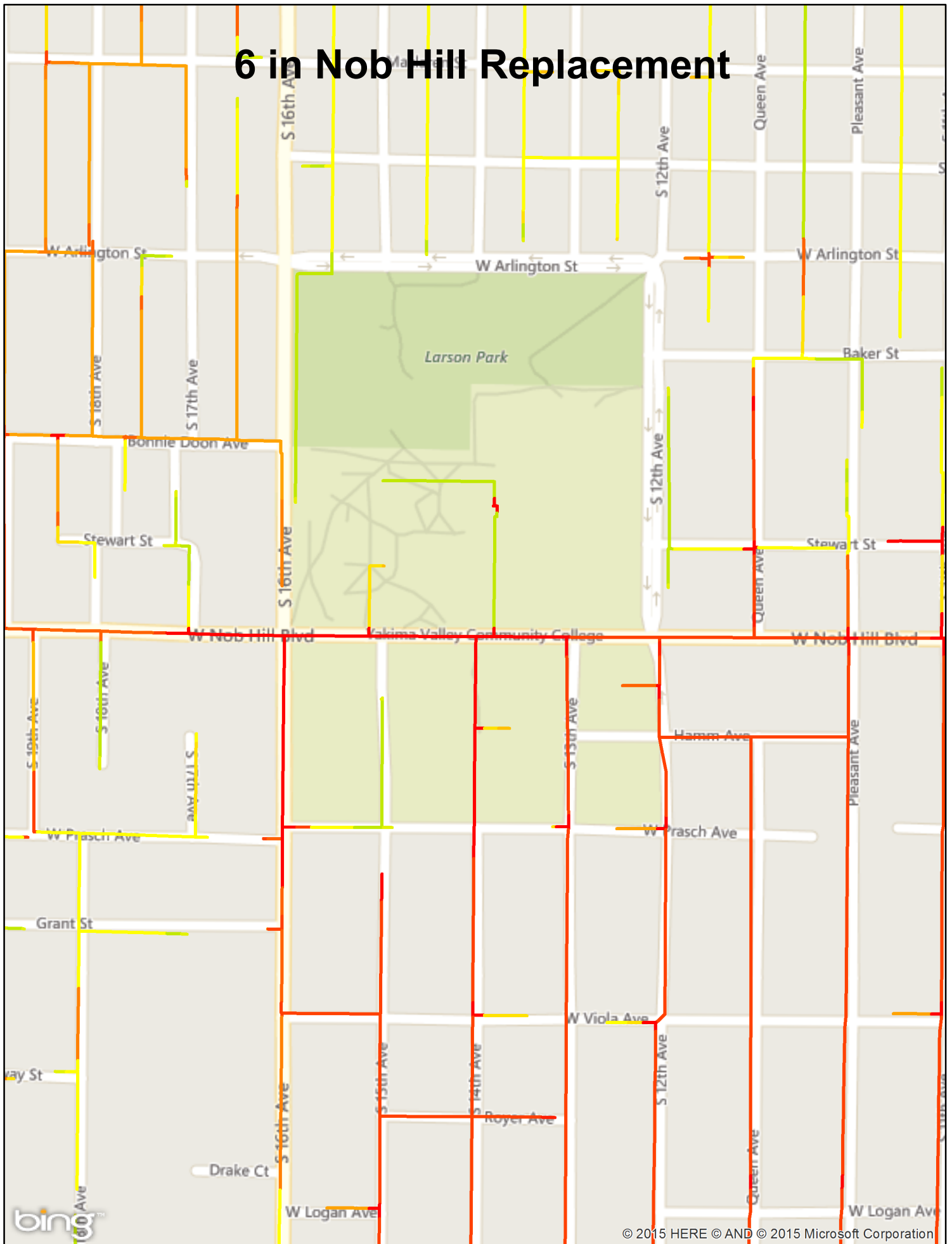
Tapteal Loop

1914

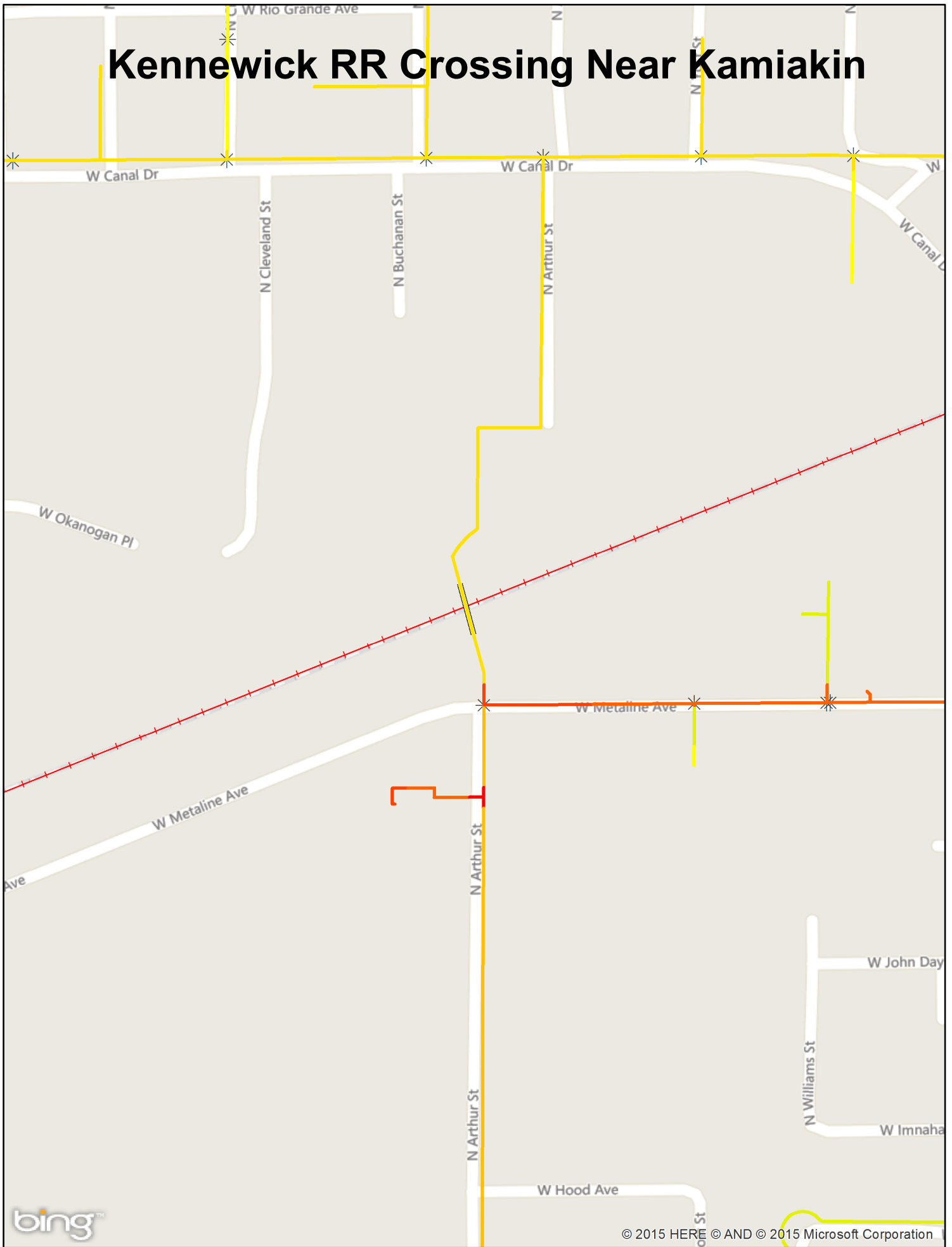
W Yellowstone Ave



6 in Nob Hill Replacement



Kennewick RR Crossing Near Kamiakin



Shelton 4" IP Bridge Replacement

