

February 2022



220066-  
CENSE-  
Rply-PSE-  
Resp-Pet-  
Att6-2-25-  
22

KATHY JUDKINS  
OR CURRENT OCCUPANT  
4324 136TH PL SE  
BELLEVUE, WA 98006

058

✉ energizeeastside@pse.com

📄 pse.com/energizeeastside

📞 Jeff Montgomery  
Wilson Construction,  
1-800-548-2614 ext. 1

## Energize Eastside construction notice

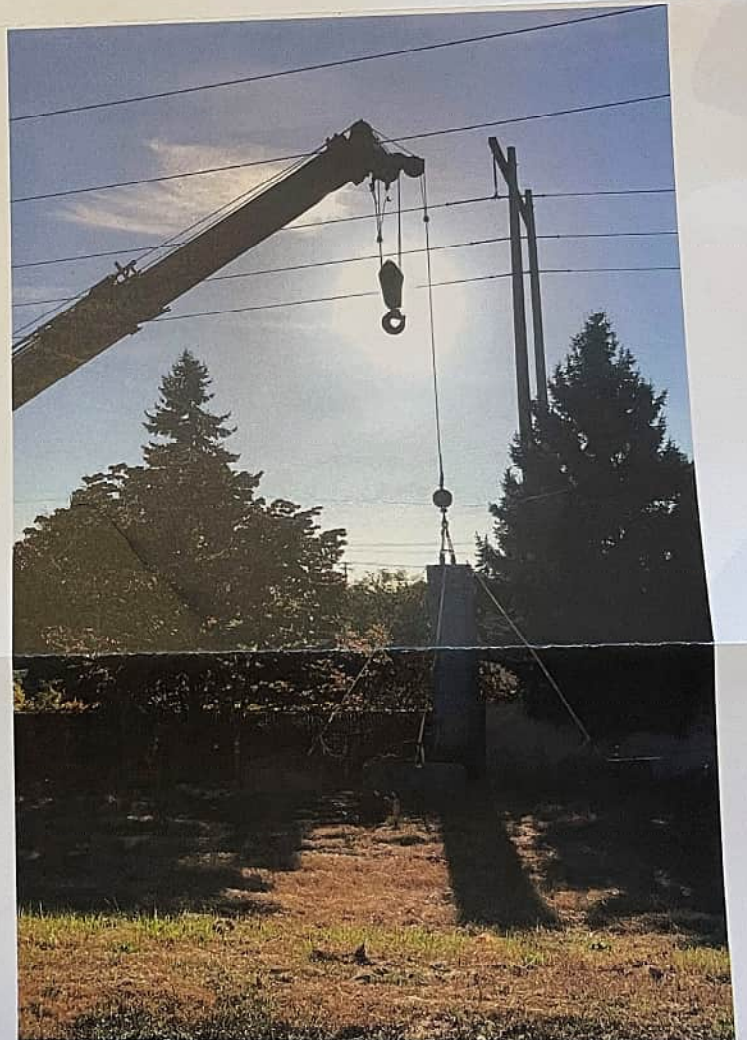
Dear PSE Customer,

**Construction will be starting in about four weeks for the Energize Eastside project in your area.**

You are receiving this letter because your property is directly along the project route, and our construction team may need safe access to your property during construction. Construction activities are property-specific, and you will be hearing from PSE and our contractor over the coming weeks regarding specific activities on and/or near your property.

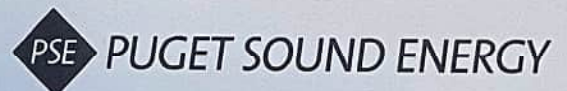
### General work sequence and activities

Upcoming construction activities will typically include additional site preparation (including vegetation removal), construction of new poles and removal of old poles, demobilization and clean-up, and restoration. During construction, work on individual properties will take place in phases. The construction team may visit your property for up to a few days at a time over several weeks or months before construction is complete.



▲ Crews in Renton constructing an embedded foundation using a crane

[pse.com/energizeeastside](http://pse.com/energizeeastside)





**What to expect:**

- You may notice varying degrees of noise during construction from mowers, hand-held power equipment, drills, cranes, and other construction equipment.
- Crews may require access through private property to do construction or reach certain areas.
- You will receive notification of specific construction activities approximately one week ahead of the work.
- Additionally, before starting work, a crew member will knock on your door to let you know they are starting. If you're not home when they knock on your door, they will leave a note to let you know they've been there.
- Typical work hours are Monday through Friday, between 7 a.m. and 6 p.m. In rare circumstances, weekend or night work may be necessary.

**About Energize Eastside**

The Eastside economy and population are outgrowing the backbone of our area's electric grid, and conservation alone cannot solve this problem.

The Energize Eastside project will build a new substation and upgrade approximately 16 miles of existing transmission lines from Redmond to Renton. Combined with continued aggressive electric conservation, Energize Eastside will keep the lights on for years to come.

For the latest information about the Energize Eastside project, go to [pse.com/energizeeastside](http://pse.com/energizeeastside).

In advance of construction, our contractor is meeting with all property owners directly along the project corridor. Please reach out to Jeff Montgomery with Wilson Construction at 1-800-548-2614, ext. 1 or email [energizeeastside@pse.com](mailto:energizeeastside@pse.com) to schedule a meeting.

As always, the safety of our customers, employees and service providers remains our top priority. In the field, PSE and service provider crews adhere to all statewide and corporate COVID-19 safety requirements. To ensure safety, our crews continue to maintain social distancing with customers in the field, and we ask our customers to do the same.

We're proud to serve in your community and aim to complete this work with minimal disruption. We'll continue to keep you updated about specific activities in your area – please reach out if you have any questions.

Sincerely,

**Energize Eastside**

If you need any of this information translated into another language please call **1-800-548-2614** and we will work to accommodate your request.