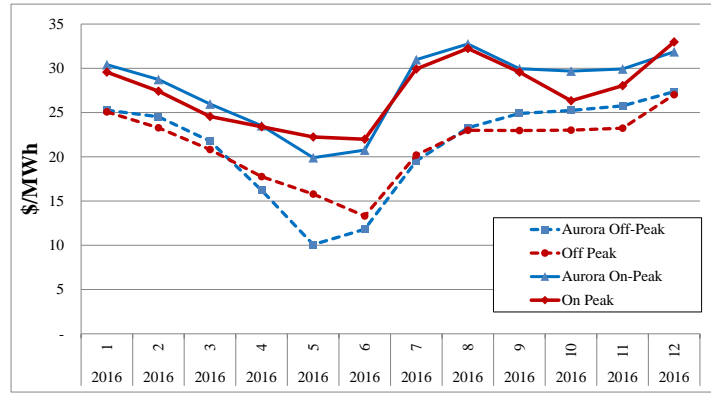


Report Year	Report Month	Condition Flat				Aurora Off Aurora On-Peak		
		Condition	Condition	Condition	Spread	Flat IMHR	Off-Peak IMHR	On-Peak IMHR
2016	1	28.14	25.26	30.41	5.15	9,707	8,713	10,490
2016	2	26.94	24.52	28.74	4.22	9,255	8,423	9,873
2016	3	24.20	21.76	25.96	4.20	8,572	7,708	9,195
2016	4	20.43	16.22	23.51	7.29	7,802	6,194	8,978
2016	5	15.57	10.08	19.90	9.82	5,924	3,835	7,571
2016	6	16.99	11.82	20.76	8.94	6,401	4,453	7,822
2016	7	25.93	19.52	30.98	11.46	9,661	7,273	11,542
2016	8	28.78	23.28	32.75	9.47	10,590	8,566	12,051
2016	9	27.82	24.89	29.96	5.07	10,268	9,186	11,068
2016	10	27.72	25.23	29.68	4.45	10,268	9,345	10,994
2016	11	28.16	25.75	29.92	4.17	9,834	8,992	10,449
2016	12	29.98	27.36	31.87	4.51	9,832	8,973	10,452
2016	25.06	21.31	27.87	6.56	9,009	7,639	10,039	

3 Month Avg (raw quarterly prices)										Stanfield	
Average	Off Peak	On Peak	Spread	Flat IMHR	Off-Peak IMHR	On-Peak IMHR					
27.15	25.08	29.56	4.48	9,366	8,651	10,198			2.90	744.00	
24.17	23.27	27.42	4.14	8,302	7,995	9,418			2.91	721.00	
22.35	20.82	24.55	3.73	7,918	7,376	8,697			2.82	744.00	
19.49	17.77	23.39	5.63	7,444	6,785	8,934			2.62	744.00	
20.78	15.78	22.24	6.45	7,906	6,005	8,461			2.63	672.00	
16.45	13.31	21.98	8.67	6,197	5,015	8,283			2.65	743.00	
25.51	20.20	29.92	9.72	9,506	7,525	11,146			2.68	720.00	
26.87	23.00	32.24	9.25	9,889	8,462	11,865			2.72	744.00	
25.90	22.97	29.57	6.60	9,569	8,476	10,913			2.71	720.00	
24.47	23.01	26.33	3.32	9,064	8,521	9,752			2.70	744.00	
24.59	23.23	28.04	4.81	8,587	8,113	9,792			2.86	744.00	
30.50	27.02	32.97	5.95	10,004	8,863	10,814			3.05	720.00	
24.02	21.29	27.35	6.06	8,645	7,649	9,856			2.77	#####	

2016_01	3.6%	0.7%	2.9%	14.9%	3.6%	0.7%	2.9%
2016_02	11.5%	5.4%	4.8%	1.8%	11.5%	5.4%	4.8%
2016_03	8.3%	4.5%	5.7%	12.6%	8.3%	4.5%	5.7%
2016_04	4.8%	-8.7%	0.5%	29.6%	4.8%	-8.7%	0.5%
2016_05	-25.1%	-36.1%	-10.5%	52.1%	-25.1%	-36.1%	-10.5%
2016_06	3.3%	-11.2%	-5.6%	3.1%	3.3%	-11.2%	-5.6%
2016_07	1.6%	-3.4%	3.6%	17.9%	1.6%	-3.4%	3.6%
2016_08	7.1%	1.2%	1.6%	2.4%	7.1%	1.2%	1.6%
2016_09	7.4%	8.4%	1.3%	-23.2%	7.4%	8.4%	1.3%
2016_10	13.3%	9.7%	12.7%	33.9%	13.3%	9.7%	12.7%
2016_11	14.5%	10.8%	6.7%	-13.2%	14.5%	10.8%	6.7%
2016_12	-1.7%	1.2%	-3.3%	-24.2%	-1.7%	1.2%	-3.3%
Avg	4.3%	0.1%	1.9%	8.2%	4.2%	-0.1%	1.9%



Flat	Aurora Off Aurora On-Peak				Flat IMHR	Off-Peak IMHR	On-Peak IMHR
	Condition	Condition	Condition	Spread			
Q1	26.43	23.85	28.37	4.52	9,178	8,281	9,853
Q2	17.66	12.71	21.39	8.68	6,709	4,828	8,124
Q3	27.51	22.56	31.23	8.67	10,173	8,342	11,550
Q4	28.62	26.11	30.49	4.38	9,978	9,104	10,631

Q1	1.87	0.79	1.19	0.40	649	274	415
Q2	(1.24)	(2.91)	(1.15)	1.77	(473)	(1,108)	(436)
Q3	1.41	0.51	0.65	0.14	522	188	242
Q4	2.10	1.69	1.38	(0.32)	760	604	512
	1.03	0.02	0.52	0.50	364	(10)	184

Q1	8%	3%	4%	10%	8%	3%	4%
Q2	-7%	-19%	-5%	26%	-7%	-19%	-5%
Q3	5%	2%	2%	2%	5%	2%	2%
Q4	8%	7%	5%	-7%	8%	7%	5%
0.043077	0%	2%	8%	4%	0%	2%	

3 Month Avg (raw quarterly prices)									
Forward Average	Forward Off Peak	Forward On Peak	Spread	Flat IMHR	Forward Off-Peak IMHR	Forward On-Peak IMHR			
24.56	23.06	27.18	4.12	8,529	8,007	9,437			
18.91	15.62	22.54	6.92	7,182	5,935	8,559			
26.10	22.05	30.58	8.52	9,651	8,154	11,308			
26.52	24.42	29.11	4.69	9,218	8,499	10,119			
24.02	21.29	27.35	6.06	8,645	7,649	9,856			

	Total	HLH	LLH
1	744	400	344
2	721	400	296
3	744	432	311
4	744	416	304
5	672	400	344
6	743	416	304
7	720	400	344
8	744	432	312
9	720	400	320
10	744	416	328
11	744	400	321
12	720	432	312

Day	GD-NW-S	MIDC-F-O	MIDC-F-ON	GD-NW-S	MIDC-F-O	MIDC-F-ON	IMHR-OFF	IMHR-ON
1/1/2006	7.89	52.07	7.54	11/2006	6.69	48.27	51.38	7.215
1/1/2006	8.26	52.03		12/2006	5.90	43.63	44.28	7.391
1/1/2006	8.26	46.9	67.28	3/1/2006	5.80	40.63	44.28	7.391
1/1/2006	8.26	46.9	67.28	4/1/2006	5.91	40.63	44.28	7.391
1/1/2006	7.815	36.37	63.92	5/1/2006	5.20	33.23	38.20	7.501
1/1/2006	8.41	60.75		6/1/2006	5.47	33.01	36.22	7.601
1/1/2006	7.98	41.65	60.75	7/1/2006	5.42	44.47	70.39	8.207
1/1/2006	7.98	41.65	60.75	8/1/2006	6.25	51.23	63.67	8.197
1/1/2006	7.98	41.65	60.75	9/1/2006	4.52	40.66	48.14	8.995
1/1/2006	7.775	47.49	63.01	10/1/2006	5.34	40.41	48.44	7.564
1/1/2006	7.73	46.74	64.99	11/1/2006	6.96	60.82	69.96	7.945
1/1/2006	7.87	47.62	61.09	12/1/2006	6.80	53.44	60.11	7.855
1/1/2006	7.945	44.96	55.15	1/1/2007	6.30	47.48	53.61	7.539
1/1/2006	7.895	44.96	55.15	2/1/2007	7.08	54.12	58.60	7.544
1/1/2006	7.895	49.08		3/1/2007	6.50	29.63	39.79	4.561
1/1/2006	7.895	49.08	55.81	4/1/2007	6.85	32.12	48.84	4.990
1/1/2006	7.895	42.94	56.71	5/1/2007	6.89	39.47	53.80	5.725
1/1/2006	7.73	37.75	55.08	6/1/2007	6.52	38.98	52.20	5.990
1/1/2006	7.875	35.08	58.05	7/1/2007	5.70	38.82	63.80	6.808
1/1/2006	7.295	36.74	54.67	8/1/2007	5.47	39.87	61.24	7.289
1/1/2006	7.805	55.84		9/1/2007	5.33	44.74	55.72	8.396
1/1/2006	7.805	55.84		10/1/2007	6.45	52.15	62.18	8.066
1/1/2006	7.905	55.84	61.51	11/1/2007	6.54	55.75	64.91	8.531
1/1/2006	7.42	45.78	57.68	12/1/2007	6.79	56.30	66.74	8.290
1/1/2006	7.27	47.19	55.16	1/1/2008	7.54	64.74	75.49	8.589
1/1/2006	7.28	49.35	54.27	2/1/2008	8.05	64.77	70.78	8.008
1/1/2006	7.705	48.54	48.87	3/1/2008	8.63	69.34	73.21	7.851
1/1/2006	7.025	48.54	48.87	4/1/2008	8.63	69.34	73.21	7.851
1/1/2006	7.085	52.13		5/1/2008	10.37	39.74	61.86	3.833
1/1/2006	7.085	52.13	52.51	6/1/2008	11.38	1.71	37.59	5.00
1/1/2006	7.085	52.13	52.51	7/1/2008	10.44	44.04	44.39	3.464
2/1/2006	7.51	47.87	52.96	8/1/2008	7.42	58.96	72.02	7.945
2/1/2006	7.65	45.2	51.78	9/1/2008	6.17	48.69	59.43	7.894
2/1/2006	7.65	45.2	51.78	10/1/2008	6.95	43.61	52.32	6.943
2/1/2006	6.76	37.71	47.48	11/1/2008	5.79	44.80	49.99	7.743
2/1/2006	6.76	48.75	48.49	12/1/2008	5.72	48.85	60.61	8.539
2/1/2006	6.76	48.75	48.49	1/1/2009	5.04	35.40	39.56	7.020
2/1/2006	6.725	48.78	49.23	2/1/2009	5.33	38.90	50.22	7.720
2/1/2006	6.77	49.18	51.27	3/1/2009	3.53	27.93	30.64	7.918
2/1/2006	6.53	46.31	46.95	4/1/2009	3.02	17.61	22.74	5.828
2/1/2006	6.53	46.31	46.95	5/1/2009	2.89	16.07	20.42	4.843
2/1/2006	6.53	46.31	46.95	6/1/2009	2.89	11.45	22.07	3.965
2/1/2006	6.515	48.82	48.55	7/1/2009	2.94	26.49	35.58	9.001
2/1/2006	6.34	52.25	55.56	8/1/2009	3.05	25.47	38.29	8.346
2/1/2006	6.68	52.25	55.57	9/1/2009	3.81	36.88	43.76	8.350
2/1/2006	6.843	54.13	58.43	10/1/2009	3.61	28.97	35.78	7.810
2/1/2006	6.74	54.13	58.43	11/1/2009	4.50	45.30	50.62	8.145
2/1/2006	6.74	54.13	58.43	12/1/2009	5.64	40.79	46.74	7.232
2/1/2006	6.74	56.41		1/1/2010	5.22	40.13	44.62	7.890
2/1/2006	6.74	56.41	58.56	2/1/2010	4.32	28.10	32.42	6.840
2/1/2006	6.605	48.1	53.19	3/1/2010	3.99	31.57	38.29	7.911
2/1/2006	6.31	46.11	48.56	4/1/2010	3.85	25.28	30.66	7.588
2/1/2006	6.455	47.16	49.88	5/1/2010	3.89	25.28	30.66	7.588
2/1/2006	6.48	48.52	48.78	6/1/2010	3.88	22.75	36.61	5.965
2/1/2006	6.48	48.52	48.78	7/1/2010	3.56	27.58	39.91	7.735
2/1/2006	6.115	44.75	45.56	8/1/2010	3.67	27.78	36.71	7.576
3/1/2006	5.645	42.31	43.39	9/1/2010	3.67	28.80	31.49	4.551
3/1/2006	5.645	42.31	43.39	10/1/2010	3.93	29.76	34.81	7.573
3/1/2006	5.515	40.42	41.6	11/1/2010	4.13	30.76	34.48	7.442
3/1/2006	5.59	40.42	41.6	12/1/2010	4.26	33.41	39.43	8.300
3/1/2006	5.59	40.42	41.6	1/1/2011	3.97	15.11	28.01	3.806
3/1/2006	5.865	41.31	42.88	2/1/2011	3.88	11.36	20.47	2.931
3/1/2006	5.66	41.05	42.82	3/1/2011	4.14	6.55	30.77	5.583
3/1/2006	5.71	43.89	44.65	4/1/2011	3.87	20.66	24.69	5.189
3/1/2006	5.745	46.68	46.68	5/1/2011	3.83	27.92	33.76	7.295
3/1/2006	5.82	45.6	46.48	6/1/2011	3.37	24.96	26.84	7.400
3/1/2006	5.82	45.6	46.48	7/1/2011	4.14	6.55	30.77	5.583
3/1/2006	6.145	44.2	45.63	8/1/2011	4.14	6.55	30.77	5.583
3/1/2006	6.22	43.88	44.8	9/1/2011	3.87	20.66	24.69	5.189
3/1/2006	6.23	43.88	44.8	10/1/2011	3.83	27.92	33.76	7.295
3/1/2006	6.23	46.46	46.36	11/1/2011	3.37	24.96	26.84	7.400
3/1/2006	6.115	43.73	44.71	12/1/2011	4.14	6.55	30.77	5.583
3/1/2006	5.95	43.89	44.65	1/1/2012	4.14	6.55	30.77	5.583
3/1/2006	5.95	43.89	44.65	2/1/2012	3.37	24.96	26.84	7.400
3/1/2006	5.95	43.89	44.65	3/1/2012	2.12	13.28	18.51	6.261
3/1/2006	5.95	43.89	44.65	4/1/2012	1.87	2.14	14.99	1.143
3/1/2006	5.95	43.89	44.65	5/1/2012	2.24	(0.02)	10.68	(?)
3/1/2006	5.95	43.89	44.65	6/1/2012	4.12	1(31)	8.99	8(02)
3/1/2006	5.95	43.89	44.65	7/1/2012	2.59	1.35	22.23	5.22
3/1/2006	5.95	43.89	44.65	8/1/2012	2.63	16.72	30.94	6.348
3/1/2006	5.95	43.89	44.65	9/1/2012	2.89	23.18	35.69	6.602
3/1/2006	5.95	43.89	44.65	10/1/2012	3.37	27.56	32.48	8.185
3/1/2006	5.95	43.89	44.65	11/1/2012	3.54	26.49	28.89	7.487
3/1/2006	5.95	43.89	44.65	12/1/2012	3.32	21.89	35.18	6.589
3/1/2006	5.95	43.89	44.65	1/1/2013	3.40	18.43	31.05	6.692
3/1/2006	5.95	43.89	44.65	2/1/2013	3.83	12.12	33.98	3.164
3/1/2006	5.95	43.89	44.65	3/1/2013	3.59	20.21	33.66	6.532
3/1/2006	5.95	43.89	44.65	4/1/2013	3.41	20.72	25.32	10.73
3/1/2006	5.95	43.89	44.65	5/1/2013	3.25	25.76	38.98	7.920
3/1/2006	5.95	43.89	44.65	6/1/2013	3.39	29.33	37.95	8.654
3/1/2006	5.95	43.89	44.65	7/1/2013	3.66	30.64	36.82	8.371
3/1/2006	5.95	43.89	44.65	8/1/2013	3.59	30.29	37.37	8.427
3/1/2006	5.95	43.89	44.65	9/1/2013	4.57	43.95	56.09	9.627
3/1/2006	5.95	43.89	44.65	10/1/2013	4.51	38.85	40.98	8.618
3/1/2006	5.95	43.89	44.65	11/1/2013	4.51	38.85	40.98	8.618
3/1/2006	5.95	43.89	44.65	12/1/2013	4.83	39.98	43.63	8.368
3/1/2006	5.95	43.89	44.65	1/1/2014	4.88	17.70	31.76	3.630
3/1/2006	5.95	43.89	44.65	2/1/2014	4.46	16.65	30.99	3.732
3/1/2006	5.95	43.89	44.65	3/1/2014	4.24	5.76	33.84	1.329
3/1/2006	5.95	43.89	44.65	4/1/2014	4.45	11.37	34.67	2.557
3/1/2006	5.95	43.89	44.65	5/1/2014	3.97	24.70	39.41	6.224
3/1/2006	5.95	43.89	44.65	6/1/2014	3.77	32.01	41.96	8.497
3/1/2006	5.95	43.89	44.65	7/1/2014	3.78	33.39	39.86	8.829
3/1/2006	5.95	43.89	44.65	8/1/2014	3.53	29.36	32.88	8.330
3/1/2006	5.95	43.89	44.65	9/1/2014	4.00	29.32	33.83	7.321
3/1/2006	5.95	43.89	44.65	10/1/2014	3.35	24.78	30.42	7.395
3/1/2006	5.95	43.89	44.65	11/1/2014	2.39	19.74	23.05	7.078
3/1/2006	5.95	43.89	44.65	12/1/2014	2.99	10.63	18.83	4.454
3/1/2006	5.95	43.89	44.65	1/1/2015	2.35	15.19	18.51	6.471
3/1/2006	5.95	43.89	44.65	2/1/2015	2.26	17.04	19.75	7.537
3/1/2006	5.95	43.89	44.65	3/1/2015	2.55	23.27	27.06	9.112
3/1/2006	5.95	43.89	44.65	4/1/2015	2.51	24.69	37.35	9.849
3/1/2006	5.95	43.89	44.65	5/1/2015	2.67	24.68	40.20	9.259
3/1/2006	5.95	43.89	44.65	6/1/2015	2.60	23.00	31.50	8.852
3/1/2006	5.95	43.89	44.65	7/1/2015	2.53	23.02	26.98	9.101
3/1/2006	5.95	43.89	44.65	8/1/2015	2.24	22.07	23.53	8.947

Off-Peak	1	2	3	4	5	6	7	8	9	10	11	12	AVG
2007	6.077	7.215	7.391	2.314	2.546	2.380	8.207	8.197	8.935	7.544	7.188	7.855	6.327
2008	6.589	8.008	7.851	8.556	3.833	1.50	4.398	7.945	7.894	7.329	7.743	6.539	6.736
2009	7.020	8.720	7.918	8.628	5.441	3.965	9.001	10.272	8.346	8.350	7.610	8.145	7.551
2010	7.232	7.690	7.848	7.911	6.568	7.67	5.865	7.576	8.451	7.573	7.442	6.888	6.888
2011	5.229	3.806	2.										

6/1/2006	6/10/2006	5.19	0.51	7.39
6/1/2006	6/11/2006	5.19	1.14	
6/1/2006	6/12/2006	5.19	1.14	15.44
6/1/2006	6/13/2006	5.22	1.34	22
6/1/2006	6/14/2006	5.265	1.45	26.27
6/1/2006	6/15/2006	5.43	1.46	25.74
6/1/2006	6/16/2006	5.645	1.37	23.25
6/1/2006	6/17/2006	5.985	1.37	23.25
6/1/2006	6/18/2006	5.985	8.77	
6/1/2006	6/19/2006	5.985	8.77	32.06
6/1/2006	6/20/2006	5.94	6.75	37.97
6/1/2006	6/21/2006	5.865	25.33	48.87
6/1/2006	6/22/2006	5.83	25.91	58.09
6/1/2006	6/23/2006	5.825	20.94	56.59
6/1/2006	6/24/2006	5.28	20.94	56.59
6/1/2006	6/25/2006	5.28	34.42	
6/1/2006	6/26/2006	5.28	34.42	62.03
6/1/2006	6/27/2006	5.2	32.72	59.67
6/1/2006	6/28/2006	5.315	32.77	56.44
6/1/2006	6/29/2006	5.295	32.77	56.44
6/1/2006	6/30/2006	5.295	34.62	50.53
7/1/2006	7/1/2006	5.01	33.42	46.6
7/1/2006	7/2/2006	5.01	41.42	
7/1/2006	7/3/2006	5.01	41.42	48.5
7/1/2006	7/4/2006	5.01	42.59	
7/1/2006	7/5/2006	5.01	42.59	47.54
7/1/2006	7/6/2006	5.25	32.3	48.82
7/1/2006	7/7/2006	4.925	30.07	42.38
7/1/2006	7/8/2006	4.785	30.07	42.38
7/1/2006	7/9/2006	4.785	33.26	
7/1/2006	7/10/2006	4.785	33.26	40.67
7/1/2006	7/11/2006	4.91	32.52	42.19
7/1/2006	7/12/2006	5.08	34.53	47.63
7/1/2006	7/13/2006	5.21	38.49	54.17
7/1/2006	7/14/2006	5.295	38.91	56.39
7/1/2006	7/15/2006	5.53	38.91	56.39
7/1/2006	7/16/2006	5.53	55.46	
7/1/2006	7/17/2006	5.53	55.46	71.63
7/1/2006	7/18/2006	5.53	44.84	77.03
7/1/2006	7/19/2006	5.365	41.67	75.57
7/1/2006	7/20/2006	5.295	40.03	85.75
7/1/2006	7/21/2006	5.415	40.88	87.5
7/1/2006	7/22/2006	5.375	40.88	87.5
7/1/2006	7/23/2006	5.375	65.92	
7/1/2006	7/24/2006	5.375	65.92	91.57
7/1/2006	7/25/2006	5.835	74.91	109.87
7/1/2006	7/26/2006	6.41	55.81	144.37
7/1/2006	7/27/2006	6.235	47.97	83.28
7/1/2006	7/28/2006	6.2	47.39	64.16
7/1/2006	7/29/2006	6.31	47.39	64.16
7/1/2006	7/30/2006	6.31	55.31	
7/1/2006	7/31/2006	6.31	55.31	62.41
8/1/2006	8/1/2006	6.685	45.47	65.21
8/1/2006	8/2/2006	7.105	49.25	69.59
8/1/2006	8/3/2006	7.115	48.17	68.15
8/1/2006	8/4/2006	6.345	44.7	59.21
8/1/2006	8/5/2006	6.365	44.7	59.21
8/1/2006	8/6/2006	6.365	53.67	
8/1/2006	8/7/2006	6.365	53.67	63.32
8/1/2006	8/8/2006	6.35	50.21	64.53
8/1/2006	8/9/2006	6.245	52.46	68.52
8/1/2006	8/10/2006	6.675	59.62	75.53
8/1/2006	8/11/2006	6.885	60.88	73.43
8/1/2006	8/12/2006	6.725	60.88	73.43
8/1/2006	8/13/2006	6.725	68.33	
8/1/2006	8/14/2006	6.725	68.33	75.02
8/1/2006	8/15/2006	6.185	51.75	64.94
8/1/2006	8/16/2006	6.12	46.68	60.94
8/1/2006	8/17/2006	6.175	52.44	63.75
8/1/2006	8/18/2006	5.935	51.74	63.31
8/1/2006	8/19/2006	5.72	51.74	63.31
8/1/2006	8/20/2006	5.72	59.02	
8/1/2006	8/21/2006	5.72	59.02	72.53
8/1/2006	8/22/2006	5.885	44.33	61.31
8/1/2006	8/23/2006	5.89	42.28	58.78
8/1/2006	8/24/2006	6.215	43.71	59.81
8/1/2006	8/25/2006	6.165	43.16	56.71
8/1/2006	8/26/2006	6.275	43.16	56.71
8/1/2006	8/27/2006	6.275	53.74	
8/1/2006	8/28/2006	6.275	53.74	61.35
8/1/2006	8/29/2006	5.55	43.91	53.8
8/1/2006	8/30/2006	5.47	43.74	53.3
8/1/2006	8/31/2006	5.505	43.74	53.3
9/1/2006	9/1/2006	5.04	44.75	58.77
9/1/2006	9/2/2006	4.795	44.75	58.77
9/1/2006	9/3/2006	4.795	54.62	
9/1/2006	9/4/2006	4.795	54.62	59.84
9/1/2006	9/5/2006	4.795	45.62	59.84
9/1/2006	9/6/2006	5.12	48.11	60.53
9/1/2006	9/7/2006	5.445	50.3	59.38
9/1/2006	9/8/2006	5.335	46.85	53.91
9/1/2006	9/9/2006	5.045	46.85	53.91
9/1/2006	9/10/2006	5.045	48.36	
9/1/2006	9/11/2006	5.045	48.36	53.69
9/1/2006	9/12/2006	4.92	42.2	54.05
9/1/2006	9/13/2006	5.045	43.68	53.46
9/1/2006	9/14/2006	4.8	38.38	48.14
9/1/2006	9/15/2006	4.62	33.37	42.42
9/1/2006	9/16/2006	3.865	33.37	42.42
9/1/2006	9/17/2006	3.865	34.65	
9/1/2006	9/18/2006	3.865	34.65	39.71
9/1/2006	9/19/2006	4.595	35.6	46.88
9/1/2006	9/20/2006	4.575	33.71	44.5
9/1/2006	9/21/2006	4.51	35.21	45.07
9/1/2006	9/22/2006	4.27	35.36	41.88
9/1/2006	9/23/2006	3.94	35.36	41.88
9/1/2006	9/24/2006	3.94	39.62	
9/1/2006	9/25/2006	3.94	39.62	42.27
9/1/2006	9/26/2006	3.9	36.76	43.28
9/1/2006	9/27/2006	3.94	36.84	42.48
9/1/2006	9/28/2006	4.015	34.19	41.03
9/1/2006	9/29/2006	3.87	32.21	38.12
9/1/2006	9/30/2006	3.87	32.21	38.12
10/1/2006	10/1/2006	3.545	34.19	52.965
10/1/2006	10/2/2006	3.545	34.19	37.08
10/1/2006	10/3/2006	3.765	34.26	40.7
10/1/2006	10/4/2006	3.69	35.21	41.16
10/1/2006	10/5/2006	4.02	35.79	42.31
10/1/2006	10/6/2006	4.275	34.8	42.24
10/1/2006	10/7/2006	3.975	34.8	42.24
10/1/2006	10/8/2006	3.975	36.79	52.965
10/1/2006	10/9/2006	3.975	36.79	40.18
10/1/2006	10/10/2006	4.545	33.79	41.81
10/1/2006	10/11/2006	4.645	34.27	42.61
10/1/2006	10/12/2006	5.165	39.76	47.96
10/1/2006	10/13/2006	4.805	38.34	44.95
10/1/2006	10/14/2006	4.165	38.34	44.95
10/1/2006	10/15/2006	4.165	38	52.965
10/1/2006	10/16/2006	4.165	38	43.45
10/1/2006	10/17/2006	5.02	40.37	48.7
10/1/2006	10/18/2006	6.02	45.369	52.965
10/1/2006	10/19/2006	5.83	45.369	52.965
10/1/2006	10/20/2006	6.42	45.369	52.965
10/1/2006	10/21/2006	6.555	45.369	52.965
10/1/2006	10/22/2006	6.555	45.369	52.965
10/1/2006	10/23/2006	6.555	45.369	52.965
10/1/2006	10/24/2006	7	45.369	52.965
10/1/2006	10/25/2006	6.885	45.369	52.965
10/1/2006	10/26/2006	6.98	45.369	52.965
10/1/2006	10/27/2006	7.405	45.369	52.965
10/1/2006	10/28/2006	6.985	45.369	52.965
10/1/2006	10/29/2006	6.985	45.369	52.965
10/1/2006	10/30/2006	6.985	45.369	52.965
10/1/2006	10/31/2006	7.05	45.369	52.965
11/1/2006	11/1/2006	6.46	66.83	77.27
11/1/2006	11/2/2006	6.37	61.26	70.35
11/1/2006	11/3/2006	6.82	52.35	61.83
11/1/2006	11/4/2006	6.91	52.35	61.83
11/1/2006	11/5/2006	6.91	52.82	
11/1/2006	11/6/2006	6.91	52.82	59.83
11/1/2006	11/7/2006	6.315	40.39	50.95
11/1/2006	11/8/2006	6.49	43.94	54.94
11/1/2006	11/9/2006	6.985	43.94	54.94
11/1/2006	11/10/2006	6.82	38.54	53.5
11/1/2006	11/11/2006	6.475	38.54	53.5
11/1/2006	11/12/2006	6.475	41.24	
11/1/2006	11/13/2006	6.475	41.24	53
11/1/2006	11/14/2006	6.98	37.07	53.21
11/1/2006	11/15/2006	7.09	39.76	54.85
11/1/2006	11/16/2006	7.035	47.34	57.45
11/1/2006	11/17/2006	7.175	46.35	55.71
11/1/2006	11/18/2006	6.94	46.35	55.71

11/1/2006	11/19/2006	6.94	49.38
11/1/2006	11/20/2006	6.94	49.38
11/1/2006	11/21/2006	7.035	49.25
11/1/2006	11/22/2006	7.01	49.25
11/1/2006	11/23/2006	7.15	49
11/1/2006	11/24/2006	7.15	49
11/1/2006	11/25/2006	7.15	49
11/1/2006	11/26/2006	7.15	55.78
11/1/2006	11/27/2006	7.15	55.78
11/1/2006	11/28/2006	7.57	68.69
11/1/2006	11/29/2006	7.715	66.92
11/1/2006	11/30/2006	7.67	66.37
12/1/2006	12/1/2006	7.885	63.5
12/1/2006	12/2/2006	7.8	63.5
12/1/2006	12/3/2006	7.8	67.84
12/1/2006	12/4/2006	7.8	67.84
12/1/2006	12/5/2006	7.32	56.67
12/1/2006	12/6/2006	6.985	53.37
12/1/2006	12/7/2006	6.975	53.41
12/1/2006	12/8/2006	7.135	53.34
12/1/2006	12/9/2006	7.075	53.34
12/1/2006	12/10/2006	7.075	56.95
12/1/2006	12/11/2006	7.075	56.95
12/1/2006	12/12/2006	6.735	48.67
12/1/2006	12/13/2006	6.84	47.71
12/1/2006	12/14/2006	7.11	47.73
12/1/2006	12/15/2006	7.07	52.79
12/1/2006	12/16/2006	6.84	52.79
12/1/2006	12/17/2006	6.84	55.61
12/1/2006	12/18/2006	6.84	55.61
12/1/2006	12/19/2006	6.955	53.02
12/1/2006	12/20/2006	6.625	52.29
12/1/2006	12/21/2006	6.78	52.29
12/1/2006	12/22/2006	6.465	51.45
12/1/2006	12/23/2006	6.305	51.45
12/1/2006	12/24/2006	6.305	50.94
12/1/2006	12/25/2006	6.305	50.94
12/1/2006	12/26/2006	6.305	48.8
12/1/2006	12/27/2006	5.965	44.36
12/1/2006	12/28/2006	5.965	44.36
12/1/2006	12/29/2006	5.96	47.71
12/1/2006	12/30/2006	5.96	47.71
12/1/2006	12/31/2006	5.96	51.79
1/1/2007	1/1/2007	5.74	51.49
1/1/2007	1/2/2007	5.74	51.49
1/1/2007	1/3/2007	5.745	43.77
1/1/2007	1/4/2007	5.89	41.22
1/1/2007	1/5/2007	5.945	37.1
1/1/2007	1/6/2007	5.82	37.1
1/1/2007	1/7/2007	5.82	44.84
1/1/2007	1/8/2007	5.82	44.84
1/1/2007	1/9/2007	6.16	41.12
1/1/2007	1/10/2007	6.195	45.62
1/1/2007	1/11/2007	6.495	46.92
1/1/2007	1/12/2007	6.225	51.69
1/1/2007	1/13/2007	6.175	51.69
1/1/2007	1/14/2007	6.175	48.76
1/1/2007	1/15/2007	6.175	48.76
1/1/2007	1/16/2007	6.175	45.62
1/1/2007	1/17/2007	6.885	52.64
1/1/2007	1/18/2007	6.67	48.28
1/1/2007	1/19/2007	6.18	45.42
1/1/2007	1/20/2007	6.21	45.42
1/1/2007	1/21/2007	6.21	48.9
1/1/2007	1/22/2007	6.21	48.9
1/1/2007	1/23/2007	6.79	48.61
1/1/2007	1/24/2007	6.92	47.81
1/1/2007	1/25/2007	6.91	47.82
1/1/2007	1/26/2007	6.67	47.73
1/1/2007	1/27/2007	6.555	47.73
1/1/2007	1/28/2007	6.555	51.11
1/1/2007	1/29/2007	6.555	51.11
1/1/2007	1/30/2007	6.85	51.7
1/1/2007	1/31/2007	6.755	55.26
2/1/2007	2/1/2007	7.195	58.54
2/1/2007	2/2/2007	7.38	59.27
2/1/2007	2/3/2007	7.21	59.27
2/1/2007	2/4/2007	7.21	60.4
2/1/2007	2/5/2007	7.21	60.4
2/1/2007	2/6/2007	7.305	56.77
2/1/2007	2/7/2007	7.13	52.57
2/1/2007	2/8/2007	7.135	52.18
2/1/2007	2/9/2007	7.185	53.29
2/1/2007	2/10/2007	7.225	53.29
2/1/2007	2/11/2007	7.225	56.92
2/1/2007	2/12/2007	7.225	56.92
2/1/2007	2/13/2007	6.835	48.16
2/1/2007	2/14/2007	6.925	47.08
2/1/2007	2/15/2007	7	47.08
2/1/2007	2/16/2007	6.83	48.45
2/1/2007	2/17/2007	6.89	48.45
2/1/2007	2/18/2007	6.89	53.53
2/1/2007	2/19/2007	6.89	53.53
2/1/2007	2/20/2007	6.89	53.59
2/1/2007	2/21/2007	6.83	53.59
2/1/2007	2/22/2007	7.05	53.79
2/1/2007	2/23/2007	7.09	51.87
2/1/2007	2/24/2007	7.1	51.87
2/1/2007	2/25/2007	7.1	56.53
2/1/2007	2/26/2007	7.1	56.53
2/1/2007	2/27/2007	7.215	54.62
2/1/2007	2/28/2007	6.975	56.63
3/1/2007	3/1/2007	6.935	52.68
3/1/2007	3/2/2007	6.755	49.12
3/1/2007	3/3/2007	6.735	49.12
3/1/2007	3/4/2007	6.735	48.56
3/1/2007	3/5/2007	6.735	48.95
3/1/2007	3/6/2007	6.735	45.76
3/1/2007	3/7/2007	6.755	45.78
3/1/2007	3/8/2007	6.795	48.25
3/1/2007	3/9/2007	6.53	46.31
3/1/2007	3/10/2007	6.54	46.31
3/1/2007	3/11/2007	6.54	45.41
3/1/2007	3/12/2007	6.54	45.41
3/1/2007	3/13/2007	6.32	37.83
3/1/2007	3/14/2007	6.26	35.32
3/1/2007	3/15/2007	6.28	30.7
3/1/2007	3/16/2007	6.44	31.42
3/1/2007	3/17/2007	6.175	31.42
3/1/2007	3/18/2007	6.175	32.17
3/1/2007	3/19/2007	6.175	32.17
3/1/2007	3/20/2007	6.175	16.28
3/1/2007	3/21/2007	6.305	13.58
3/1/2007	3/22/2007	6.26	10.76
3/1/2007	3/23/2007	6.455	11.31
3/1/2007	3/24/2007	6.395	11.31
3/1/2007	3/25/2007	6.395	16
3/1/2007	3/26/2007	6.395	16
3/1/2007	3/27/2007	6.35	9.97
3/1/2007	3/28/2007	6.37	6.52
3/1/2007	3/29/2007	6.785	1.72
3/1/2007	3/30/2007	6.64	0.86
3/1/2007	3/31/2007	6.64	0.86
4/1/2007	4/1/2007	6.765	2.98
4/1/2007	4/2/2007	6.765	2.98
4/1/2007	4/3/2007	6.9	5.84
4/1/2007	4/4/2007	6.86	23.04
4/1/2007	4/5/2007	6.785	23.04
4/1/2007	4/6/2007	6.715	15.76
4/1/2007	4/7/2007	6.715	15.76
4/1/2007	4/8/2007	6.715	12.18
4/1/2007	4/9/2007	6.715	12.18
4/1/2007	4/10/2007	7.015	18.84
4/1/2007	4/11/2007	6.975	44.64
4/1/2007	4/12/2007	7.27	46.85
4/1/2007	4/13/2007	7.225	35.99
4/1/2007	4/14/2007	7.13	35.99
4/1/2007	4/15/2007	7.13	43.74
4/1/2007	4/16/2007	7.13	43.74
4/1/2007	4/17/2007	6.94	41.44
4/1/2007	4/18/2007	6.85	43.63
4/1/2007	4/19/2007	6.795	43.3
4/1/2007	4/20/2007	6.81	38.6
4/1/2007	4/21/2007	6.665	38.6
4/1/2007	4/22/2007	6.665	45.13
4/1/2007	4/23/2007	6.665	45.13
4/1/2007	4/24/2007	6.625	39.98
4/1/2007	4/25/2007	6.875	38.89
4/1/2007	4/26/2007	6.935	38.18
4/1/2007	4/27/2007	6.83	38.87
4/1/2007	4/28/2007	6.67	38.87
4/1/2007	4/29/2007	6.67	44.22

4/1/2007	4/30/2007	6.67	44.22	54.54
5/1/2007	5/1/2007	7.135	38.45	53.4
5/1/2007	5/2/2007	6.98	39.28	46.59
5/1/2007	5/3/2007	6.96	28.19	36.03
5/1/2007	5/4/2007	6.825	19.67	30.15
5/1/2007	5/5/2007	6.9	19.67	30.15
5/1/2007	5/6/2007	6.9	34.06	
5/1/2007	5/7/2007	6.9	34.06	41.54
5/1/2007	5/8/2007	6.95	27.09	42.11
5/1/2007	5/9/2007	6.815	28.65	53.01
5/1/2007	5/10/2007	6.785	35.76	56.81
5/1/2007	5/11/2007	6.85	37.15	55.46
5/1/2007	5/12/2007	6.8	37.15	55.46
5/1/2007	5/13/2007	6.8	48.94	
5/1/2007	5/14/2007	6.8	48.94	63.67
5/1/2007	5/15/2007	7.15	38.84	61.95
5/1/2007	5/16/2007	7.035	39.7	59.56
5/1/2007	5/17/2007	6.975	39.95	53.73
5/1/2007	5/18/2007	7.05	40.7	53.69
5/1/2007	5/19/2007	7.225	40.7	53.69
5/1/2007	5/20/2007	7.225	50.63	
5/1/2007	5/21/2007	7.225	50.63	61.57
5/1/2007	5/22/2007	7.015	42.9	61.42
5/1/2007	5/23/2007	6.975	49.06	64.95
5/1/2007	5/24/2007	6.86	49.06	64.95
5/1/2007	5/25/2007	6.755	40.6	54.2
5/1/2007	5/26/2007	6.535	40.6	54.2
5/1/2007	5/27/2007	6.535	42.68	
5/1/2007	5/28/2007	6.535	42.68	
5/1/2007	5/29/2007	6.535	40.02	59.29
5/1/2007	5/30/2007	6.77	47.88	65.14
5/1/2007	5/31/2007	6.925	47.85	65.96
6/1/2007	6/1/2007	6.945	47.76	69.02
6/1/2007	6/2/2007	6.755	47.76	59.02
6/1/2007	6/3/2007	6.755	50.35	
6/1/2007	6/4/2007	6.755	50.35	60.72
6/1/2007	6/5/2007	6.925	39.8	53.72
6/1/2007	6/6/2007	6.96	42.45	52.72
6/1/2007	6/7/2007	6.925	34.72	49.79
6/1/2007	6/8/2007	6.695	17	39.37
6/1/2007	6/9/2007	6.3	17	39.37
6/1/2007	6/10/2007	6.3	26.22	
6/1/2007	6/11/2007	6.3	26.22	42.74
6/1/2007	6/12/2007	6.38	28.43	50.61
6/1/2007	6/13/2007	6.38	36.22	53.99
6/1/2007	6/14/2007	6.57	37.16	51.55
6/1/2007	6/15/2007	6.46	38.64	49.38
6/1/2007	6/16/2007	6.57	38.64	49.38
6/1/2007	6/17/2007	6.57	45.9	
6/1/2007	6/18/2007	6.57	45.9	52.35
6/1/2007	6/19/2007	6.86	44.04	55.91
6/1/2007	6/20/2007	6.695	43.6	57.39
6/1/2007	6/21/2007	6.665	43.24	56.94
6/1/2007	6/22/2007	6.595	41.47	53.68
6/1/2007	6/23/2007	6.375	41.47	53.68
6/1/2007	6/24/2007	6.375	46.49	
6/1/2007	6/25/2007	6.375	46.49	56.73
6/1/2007	6/26/2007	6.125	40.41	55.47
6/1/2007	6/27/2007	6.075	38.86	53.89
6/1/2007	6/28/2007	6.04	38.62	53.08
6/1/2007	6/29/2007	6.135	37.14	48.29
6/1/2007	6/30/2007	6.135	37.14	48.29
7/1/2007	7/1/2007	5.97	49.95	
7/1/2007	7/2/2007	5.97	49.95	59.66
7/1/2007	7/3/2007	6.24	53.9	88.54
7/1/2007	7/4/2007	6.305	57.86	
7/1/2007	7/5/2007	6.305	57.86	197.79
7/1/2007	7/6/2007	6.055	31.08	72.35
7/1/2007	7/7/2007	5.79	31.08	72.35
7/1/2007	7/8/2007	5.79	38.79	
7/1/2007	7/9/2007	5.79	38.79	60.94
7/1/2007	7/10/2007	5.91	35.5	67.82
7/1/2007	7/11/2007	5.87	35.39	67.45
7/1/2007	7/12/2007	5.96	34.52	66.04
7/1/2007	7/13/2007	5.67	32.99	53.97
7/1/2007	7/14/2007	5.695	32.99	53.97
7/1/2007	7/15/2007	5.695	38.8	
7/1/2007	7/16/2007	5.695	38.8	55.08
7/1/2007	7/17/2007	5.75	36.57	54.3
7/1/2007	7/18/2007	5.685	38.55	56.97
7/1/2007	7/19/2007	5.555	38.91	54.24
7/1/2007	7/20/2007	5.78	39.59	50.6
7/1/2007	7/21/2007	5.775	39.59	50.6
7/1/2007	7/22/2007	5.775	47.24	
7/1/2007	7/23/2007	5.775	47.24	97.38
7/1/2007	7/24/2007	5.4	35.96	53.85
7/1/2007	7/25/2007	5.295	30.52	50.17
7/1/2007	7/26/2007	5.12	28.45	50.85
7/1/2007	7/27/2007	5.255	25.83	47.99
7/1/2007	7/28/2007	5.125	25.83	47.99
7/1/2007	7/29/2007	5.125	38.74	
7/1/2007	7/30/2007	5.125	38.74	52.23
7/1/2007	7/31/2007	5.915	33.46	94.17
8/1/2007	8/1/2007	5.68	36.58	61.22
8/1/2007	8/2/2007	5.42	35.9	61.33
8/1/2007	8/3/2007	5.535	35.05	56.54
8/1/2007	8/4/2007	5.32	35.05	56.54
8/1/2007	8/5/2007	5.32	43.51	
8/1/2007	8/6/2007	5.32	43.51	58.73
8/1/2007	8/7/2007	5.405	35	53.87
8/1/2007	8/8/2007	5.5	34.22	52.52
8/1/2007	8/9/2007	5.27	29.69	48.8
8/1/2007	8/10/2007	5.265	30.41	45.92
8/1/2007	8/11/2007	5.4	30.41	45.92
8/1/2007	8/12/2007	5.4	38.75	
8/1/2007	8/13/2007	5.4	38.75	54
8/1/2007	8/14/2007	6.115	39.07	65.42
8/1/2007	8/15/2007	5.935	41.49	69.07
8/1/2007	8/16/2007	6.355	44.73	75.11
8/1/2007	8/17/2007	6	41.14	61.04
8/1/2007	8/18/2007	6.195	41.14	61.04
8/1/2007	8/19/2007	6.195	45.48	
8/1/2007	8/20/2007	6.195	45.48	62.38
8/1/2007	8/21/2007	5.69	40.26	65.52
8/1/2007	8/22/2007	5.25	40.35	62.19
8/1/2007	8/23/2007	5.215	40.04	56.4
8/1/2007	8/24/2007	5.065	39.19	51.48
8/1/2007	8/25/2007	5.005	39.19	51.48
8/1/2007	8/26/2007	5.005	46.07	
8/1/2007	8/27/2007	5.005	46.07	56.11
8/1/2007	8/28/2007	4.76	39.99	58.72
8/1/2007	8/29/2007	5.04	48.37	90.36
8/1/2007	8/30/2007	5.17	48.37	90.36
8/1/2007	8/31/2007	5.13	42.58	80.35
9/1/2007	9/1/2007	5.085	45.53	58
9/1/2007	9/2/2007	5.085	45.53	
9/1/2007	9/3/2007	5.085	46.7	
9/1/2007	9/4/2007	5.085	46.7	58.95
9/1/2007	9/5/2007	4.62	41.64	53.73
9/1/2007	9/6/2007	5.32	46.03	59.72
9/1/2007	9/7/2007	5.46	45.25	58.87
9/1/2007	9/8/2007	4.94	45.25	58.87
9/1/2007	9/9/2007	4.94	50.93	
9/1/2007	9/10/2007	4.94	50.93	60.43
9/1/2007	9/11/2007	5.16	43.99	62.56
9/1/2007	9/12/2007	5.545	44.11	59.51
9/1/2007	9/13/2007	5.595	42.48	56.47
9/1/2007	9/14/2007	5.81	40.06	54.74
9/1/2007	9/15/2007	5.515	40.06	54.74
9/1/2007	9/16/2007	5.515	48.15	
9/1/2007	9/17/2007	5.515	48.15	55.33
9/1/2007	9/18/2007	5.58	40.19	54.81
9/1/2007	9/19/2007	5.595	41.12	51.69
9/1/2007	9/20/2007	5.475	43.54	50.38
9/1/2007	9/21/2007	5.24	43.22	49.99
9/1/2007	9/22/2007	5.16	43.22	49.99
9/1/2007	9/23/2007	5.16	47.43	
9/1/2007	9/24/2007	5.16	47.43	53.98
9/1/2007	9/25/2007	5.38	42.47	55.76
9/1/2007	9/26/2007	5.71	43.64	55.7
9/1/2007	9/27/2007	5.695	43.64	55.7
9/1/2007	9/28/2007	5.495	43.19	53.63
9/1/2007	9/29/2007	5.495	43.19	53.63
9/1/2007	9/30/2007	5.495	48.43	
10/1/2007	10/1/2007	5.595	43	54.23
10/1/2007	10/2/2007	5.775	42.46	55.12
10/1/2007	10/3/2007	6.115	44.39	59.37
10/1/2007	10/4/2007	6.53	47.32	65.11
10/1/2007	10/5/2007	6.45	47.41	60.28
10/1/2007	10/6/2007	6.405	47.41	60.28
10/1/2007	10/7/2007	6.405	55.98	
10/1/2007	10/8/2007	6.405	55.98	63.8

10/1/2007	10/9/2007	6.425	45.95	60.3
10/1/2007	10/11/2007	6.3	46.97	57.55
10/1/2007	10/11/2007	6.375	46.65	58.9
10/1/2007	10/12/2007	6.45	49.93	58.02
10/1/2007	10/13/2007	6.14	49.93	58.02
10/1/2007	10/14/2007	6.14	54.39	59.36
10/1/2007	10/15/2007	6.14	54.39	59.36
10/1/2007	10/16/2007	6.675	50.35	62.01
10/1/2007	10/17/2007	6.96	52.59	62.82
10/1/2007	10/18/2007	6.74	51.66	62.04
10/1/2007	10/19/2007	6.815	53.14	60.36
10/1/2007	10/20/2007	6.69	53.14	60.36
10/1/2007	10/21/2007	6.69	57.63	67.03
10/1/2007	10/22/2007	6.69	57.93	66.03
10/1/2007	10/23/2007	6.41	55.81	74.07
10/1/2007	10/24/2007	6.255	55.34	66.96
10/1/2007	10/25/2007	6.285	51.45	60.31
10/1/2007	10/26/2007	6.525	54.62	62.42
10/1/2007	10/27/2007	6.595	54.62	62.42
10/1/2007	10/28/2007	6.595	59.88	67.21
10/1/2007	10/29/2007	6.595	59.88	67.21
10/1/2007	10/30/2007	6.795	56.05	66.35
10/1/2007	10/31/2007	7.08	57.95	72.05
11/1/2007	11/1/2007	6.985	59.13	71.67
11/1/2007	11/2/2007	7.01	57.37	66.08
11/1/2007	11/3/2007	6.405	57.37	66.08
11/1/2007	11/4/2007	6.405	61.1	
11/1/2007	11/5/2007	6.405	61.1	65.57
11/1/2007	11/6/2007	6.47	54.67	63.98
11/1/2007	11/7/2007	6.905	59.47	69.41
11/1/2007	11/8/2007	6.67	59.47	69.41
11/1/2007	11/9/2007	6.195	53.5	64.38
11/1/2007	11/10/2007	5.92	53.5	64.38
11/1/2007	11/11/2007	5.92	49.22	
11/1/2007	11/12/2007	5.92	49.22	59.61
11/1/2007	11/13/2007	6.005	46.62	58.47
11/1/2007	11/14/2007	6.14	49.15	58.22
11/1/2007	11/15/2007	5.83	47.18	56.85
11/1/2007	11/16/2007	6.4	48.62	57.47
11/1/2007	11/17/2007	6.4	48.62	57.47
11/1/2007	11/18/2007	6.725	56.55	
11/1/2007	11/19/2007	6.725	56.55	60.85
11/1/2007	11/20/2007	6.895	60.66	69.61
11/1/2007	11/21/2007	6.655	60.66	69.61
11/1/2007	11/22/2007	6.42	53.09	56.25
11/1/2007	11/23/2007	6.42	53.09	56.25
11/1/2007	11/24/2007	6.42	53.09	56.25
11/1/2007	11/25/2007	6.42	55.42	
11/1/2007	11/26/2007	6.42	55.42	58.21
11/1/2007	11/27/2007	7.355	59.69	70.95
11/1/2007	11/28/2007	7.255	62.85	74.34
11/1/2007	11/29/2007	7.11	62.85	74.34
11/1/2007	11/30/2007	6.965	67.01	82.17
12/1/2007	12/1/2007	6.92	64.63	79.73
12/1/2007	12/2/2007	6.92	63.48	
12/1/2007	12/3/2007	6.92	63.48	68.76
12/1/2007	12/4/2007	6.67	52.25	61.92
12/1/2007	12/5/2007	6.805	51.94	63.93
12/1/2007	12/6/2007	6.675	55.3	68.11
12/1/2007	12/7/2007	6.975	55.08	66.68
12/1/2007	12/8/2007	6.815	55.08	66.68
12/1/2007	12/9/2007	6.815	59.64	
12/1/2007	12/10/2007	6.815	59.64	70.61
12/1/2007	12/11/2007	6.755	58.47	72.08
12/1/2007	12/12/2007	6.895	63.03	74.5
12/1/2007	12/13/2007	6.92	60.28	72.96
12/1/2007	12/14/2007	7.14	60.75	72.19
12/1/2007	12/15/2007	6.8	60.75	72.19
12/1/2007	12/16/2007	6.8	63.55	
12/1/2007	12/17/2007	6.8	63.55	73.26
12/1/2007	12/18/2007	6.765	52.53	66.13
12/1/2007	12/19/2007	6.905	47.33	63.07
12/1/2007	12/20/2007	6.825	47.33	63.07
12/1/2007	12/21/2007	6.82	50.89	62.87
12/1/2007	12/22/2007	6.695	50.89	62.87
12/1/2007	12/23/2007	6.695	53.7	
12/1/2007	12/24/2007	6.695	53.7	61.19
12/1/2007	12/25/2007	6.695	51.86	
12/1/2007	12/26/2007	6.695	51.86	59.18
12/1/2007	12/27/2007	6.77	63.37	60.63
12/1/2007	12/28/2007	6.66	51.76	60.43
12/1/2007	12/29/2007	6.66	51.76	60.43
12/1/2007	12/30/2007	6.66	58.76	
12/1/2007	12/31/2007	6.66	58.76	65.11
1/1/2008	1/1/2008	6.84	55.6	
1/1/2008	1/2/2008	6.84	55.6	61.52
1/1/2008	1/3/2008	7.37	51.21	64.93
1/1/2008	1/4/2008	7.31	49.11	61.71
1/1/2008	1/5/2008	7.115	49.11	61.71
1/1/2008	1/6/2008	7.115	53.58	
1/1/2008	1/7/2008	7.115	53.58	61.87
1/1/2008	1/8/2008	7.22	53.11	62.83
1/1/2008	1/9/2008	7.295	54.3	63.52
1/1/2008	1/10/2008	7.51	56.36	64.82
1/1/2008	1/11/2008	7.43	55.95	63.42
1/1/2008	1/12/2008	7.555	55.95	63.42
1/1/2008	1/13/2008	7.555	62.26	
1/1/2008	1/14/2008	7.555	62.26	66.41
1/1/2008	1/15/2008	7.825	61.82	70.64
1/1/2008	1/16/2008	7.895	68.77	77.14
1/1/2008	1/17/2008	7.76	68.77	77.14
1/1/2008	1/18/2008	7.715	67.54	75.65
1/1/2008	1/19/2008	7.95	67.54	75.65
1/1/2008	1/20/2008	7.95	74.08	
1/1/2008	1/21/2008	7.95	74.08	82.04
1/1/2008	1/22/2008	7.95	74.31	90.41
1/1/2008	1/23/2008	7.57	74.5	90.32
1/1/2008	1/24/2008	7.535	75.36	94.24
1/1/2008	1/25/2008	7.495	75.42	91.4
1/1/2008	1/26/2008	7.5	76.42	91.4
1/1/2008	1/27/2008	7.5	74.98	
1/1/2008	1/28/2008	7.5	74.98	87.16
1/1/2008	1/29/2008	7.835	76.52	83.93
1/1/2008	1/30/2008	7.99	78.48	90.1
1/1/2008	1/31/2008	7.925	76.45	89.42
2/1/2008	2/1/2008	7.885	73.83	82.58
2/1/2008	2/2/2008	7.62	73.83	82.58
2/1/2008	2/3/2008	7.62	73.28	
2/1/2008	2/4/2008	7.62	73.28	78.93
2/1/2008	2/5/2008	7.38	66.66	73.66
2/1/2008	2/6/2008	7.635	67.07	74.09
2/1/2008	2/7/2008	7.775	65.74	72.58
2/1/2008	2/8/2008	7.75	61.04	68
2/1/2008	2/9/2008	7.745	61.04	68
2/1/2008	2/10/2008	7.745	62.34	
2/1/2008	2/11/2008	7.745	62.34	68.26
2/1/2008	2/12/2008	8.035	60.36	67.85
2/1/2008	2/13/2008	8.01	60.67	67.27
2/1/2008	2/14/2008	7.975	60.67	67.27
2/1/2008	2/15/2008	8.055	58.16	64.25
2/1/2008	2/16/2008	8.25	58.16	64.25
2/1/2008	2/17/2008	8.25	63.02	
2/1/2008	2/18/2008	8.25	63.02	67.26
2/1/2008	2/19/2008	8.25	62.01	70
2/1/2008	2/20/2008	8.385	62.64	70.34
2/1/2008	2/21/2008	8.51	63.68	70.44
2/1/2008	2/22/2008	8.385	63.13	68.02
2/1/2008	2/23/2008	8.195	63.13	68.02
2/1/2008	2/24/2008	8.195	65.41	
2/1/2008	2/25/2008	8.195	65.41	69.26
2/1/2008	2/26/2008	8.56	64.42	71.54
2/1/2008	2/27/2008	8.525	65.47	71.66
2/1/2008	2/28/2008	8.51	65.47	71.66
2/1/2008	2/29/2008	8.44	65.22	71.68
3/1/2008	3/1/2008	8.5	63.71	68.33
3/1/2008	3/2/2008	8.5	66.59	
3/1/2008	3/3/2008	8.5	66.59	69.45
3/1/2008	3/4/2008	8.735	63.08	68.33
3/1/2008	3/5/2008	8.725	66.05	70.82
3/1/2008	3/6/2008	8.8	66.84	71.51
3/1/2008	3/7/2008	9.08	69.58	72.9
3/1/2008	3/8/2008	9.12	69.58	72.9
3/1/2008	3/9/2008	9.12	76.48	
3/1/2008	3/10/2008	9.12	76.48	78.29
3/1/2008	3/11/2008	8.945	72.51	77.89
3/1/2008	3/12/2008	9.18	67.99	77.64
3/1/2008	3/13/2008	9.135	64.74	73.11
3/1/2008	3/14/2008	9.175	64.2	72.35
3/1/2008	3/15/2008	9.315	64.2	72.35
3/1/2008	3/16/2008	9.315	74.02	
3/1/2008	3/17/2008	9.315	74.02	75.54
3/1/2008	3/18/2008	9.13	69.27	72.75

3/1/2008	3/19/2008	8.64	73.64	75.9
3/1/2008	3/20/2008	8.555	73.64	75.9
3/1/2008	3/21/2008	8.115	71	75.02
3/1/2008	3/22/2008	8.115	71	75.02
3/1/2008	3/23/2008	8.115	63	
3/1/2008	3/24/2008	8.115	63	66.64
3/1/2008	3/25/2008	8.51	62.26	69.1
3/1/2008	3/26/2008	8.77	66.95	72
3/1/2008	3/27/2008	8.825	69.33	71.16
3/1/2008	3/28/2008	8.915	69.79	73.28
3/1/2008	3/29/2008	9.135	69.79	73.28
3/1/2008	3/30/2008	9.135	80.1	
3/1/2008	3/31/2008	9.135	80.1	81.9
4/1/2008	4/1/2008	9.52	82.41	90.19
4/1/2008	4/2/2008	9.535	80	93.56
4/1/2008	4/3/2008	9.17	76.37	85
4/1/2008	4/4/2008	9.175	81.91	85.53
4/1/2008	4/5/2008	8.865	81.91	85.53
4/1/2008	4/6/2008	8.865	94.1	
4/1/2008	4/7/2008	8.865	94.1	96.28
4/1/2008	4/8/2008	8.97	94.27	100.68
4/1/2008	4/9/2008	9.23	92.21	101.29
4/1/2008	4/10/2008	9.385	90.47	92.61
4/1/2008	4/11/2008	9.565	78.21	88.99
4/1/2008	4/12/2008	9.455	78.21	88.99
4/1/2008	4/13/2008	9.455	93.5	
4/1/2008	4/14/2008	9.455	93.5	100.18
4/1/2008	4/15/2008	9.5	81.92	91.94
4/1/2008	4/16/2008	9.61	72.07	85.04
4/1/2008	4/17/2008	9.61	76.2	85.09
4/1/2008	4/18/2008	9.755	82.79	91.77
4/1/2008	4/19/2008	9.695	82.79	91.77
4/1/2008	4/20/2008	9.695	87.63	
4/1/2008	4/21/2008	9.695	87.63	92.4
4/1/2008	4/22/2008	10.12	87.61	94.84
4/1/2008	4/23/2008	10.105	88.37	92.63
4/1/2008	4/24/2008	9.88	72.96	79.41
4/1/2008	4/25/2008	10.11	72.05	77.84
4/1/2008	4/26/2008	10.25	72.05	77.84
4/1/2008	4/27/2008		78.9	
4/1/2008	4/28/2008	10.25	78.9	88.9
4/1/2008	4/29/2008	10.455	76.26	92.08
4/1/2008	4/30/2008	10.36	72.05	89.04
5/1/2008	5/1/2008	10.245	72.83	86.63
5/1/2008	5/2/2008	10.045	69.17	77.67
5/1/2008	5/3/2008	9.7	69.17	77.67
5/1/2008	5/4/2008	9.7	73.05	
5/1/2008	5/5/2008	9.7	73.05	79.02
5/1/2008	5/6/2008	10.07	71.12	77.89
5/1/2008	5/7/2008	10.29	66.63	75.67
5/1/2008	5/8/2008	10.21	61.34	70
5/1/2008	5/9/2008	10.39	62.31	70.89
5/1/2008	5/10/2008	10.43	62.31	70.89
5/1/2008	5/11/2008	10.43	52.46	
5/1/2008	5/12/2008	10.43	52.46	77.63
5/1/2008	5/13/2008	10.495	39.24	79.23
5/1/2008	5/14/2008	10.305	42.46	62.78
5/1/2008	5/15/2008	10.645	54.88	89.54
5/1/2008	5/16/2008	10.625	73.11	96.04
5/1/2008	5/17/2008	10.535	73.11	96.04
5/1/2008	5/18/2008	10.535	49.82	
5/1/2008	5/19/2008	10.535	49.82	74.91
5/1/2008	5/20/2008	10.23	13.66	48.83
5/1/2008	5/21/2008	10.14	16.62	57.54
5/1/2008	5/22/2008	10.405	16.62	57.54
5/1/2008	5/23/2008	10.485	5.4	37.57
5/1/2008	5/24/2008	10.64	5.4	37.57
5/1/2008	5/25/2008	10.64	5.65	
5/1/2008	5/26/2008	10.64	5.65	
5/1/2008	5/27/2008	10.64	-1.29	17.77
5/1/2008	5/28/2008	10.85	-1.28	22.16
5/1/2008	5/29/2008	10.565	-0.45	18.4
5/1/2008	5/30/2008	10.45	-1.22	14.01
5/1/2008	5/31/2008	10.45	-1.22	14.01
6/1/2008	6/1/2008	10.245	-1.64	
6/1/2008	6/2/2008	10.245	-1.64	13.6
6/1/2008	6/3/2008	10.61	-0.78	7.28
6/1/2008	6/4/2008	10.925	0.61	9.97
6/1/2008	6/5/2008	10.67	0.87	17.98
6/1/2008	6/6/2008	10.765	-0.39	18.08
6/1/2008	6/7/2008	11.18	-0.39	18.08
6/1/2008	6/8/2008	11.18	0.9	
6/1/2008	6/9/2008	11.18	0.9	23.49
6/1/2008	6/10/2008	11.14	-0.04	34.97
6/1/2008	6/11/2008	11.36	-2.32	25.93
6/1/2008	6/12/2008	11.25	-1.75	9.61
6/1/2008	6/13/2008	11.305	-1.22	6.49
6/1/2008	6/14/2008	11.33	-1.22	6.49
6/1/2008	6/15/2008	11.33	4.65	
6/1/2008	6/16/2008	11.33	4.65	25.58
6/1/2008	6/17/2008	11.565	9.46	40.76
6/1/2008	6/18/2008	11.735	3.93	65.89
6/1/2008	6/19/2008	11.835	2.85	85.4
6/1/2008	6/20/2008	12.05	0.35	67.52
6/1/2008	6/21/2008	11.71	0.35	67.52
6/1/2008	6/22/2008	11.71	0.95	
6/1/2008	6/23/2008	11.71	0.95	63.05
6/1/2008	6/24/2008	11.94	0.55	55.59
6/1/2008	6/25/2008	12.1	0.51	38.67
6/1/2008	6/26/2008	11.81	-0.15	22.42
6/1/2008	6/27/2008	11.585	0.17	61.71
6/1/2008	6/28/2008	11.89	0.17	61.71
6/1/2008	6/29/2008	11.89	14.96	
6/1/2008	6/30/2008	11.89	14.96	90.94
7/1/2008	7/1/2008	12.045	1.16	71.8
7/1/2008	7/2/2008	11.925	1.4	78.65
7/1/2008	7/3/2008	11.875	1.4	78.65
7/1/2008	7/4/2008	11.455	5.55	
7/1/2008	7/5/2008	11.455	5.55	20.71
7/1/2008	7/6/2008	11.455	6.67	
7/1/2008	7/7/2008	11.455	6.67	51.63
7/1/2008	7/8/2008	11.56	4.98	61.06
7/1/2008	7/9/2008	10.935	24.51	77.95
7/1/2008	7/10/2008	10.64	37.03	78.19
7/1/2008	7/11/2008	10.445	38.14	74.2
7/1/2008	7/12/2008	10.66	38.14	74.2
7/1/2008	7/13/2008	10.66	60.49	
7/1/2008	7/14/2008	10.66	60.49	81.47
7/1/2008	7/15/2008	10.25	64.71	85.56
7/1/2008	7/16/2008	10.486	69.4	92.21
7/1/2008	7/17/2008	9.95	72.66	91.8
7/1/2008	7/18/2008	9.955	64.21	81.66
7/1/2008	7/19/2008	9.235	64.21	81.66
7/1/2008	7/20/2008	9.235	66.17	
7/1/2008	7/21/2008	9.235	66.17	76.08
7/1/2008	7/22/2008	9.39	67.55	80.51
7/1/2008	7/23/2008	9.075	64.81	81.09
7/1/2008	7/24/2008	8.915	65.06	84
7/1/2008	7/25/2008	8.705	59.63	69.45
7/1/2008	7/26/2008	8.31	59.63	69.45
7/1/2008	7/27/2008	8.31	61.23	
7/1/2008	7/28/2008	8.31	61.23	73.9
7/1/2008	7/29/2008	8.16	54.1	65.37
7/1/2008	7/30/2008	7.975	54.99	64.61
7/1/2008	7/31/2008	7.685	57.2	69.43
8/1/2008	8/1/2008	8.035	53.95	74.4
8/1/2008	8/2/2008	7.845	63.4	74.4
8/1/2008	8/3/2008	7.845	70.91	
8/1/2008	8/4/2008	7.845	70.91	80.78
8/1/2008	8/5/2008	8.1	66.39	87.91
8/1/2008	8/6/2008	7.605	62.43	77.81
8/1/2008	8/7/2008	7.665	61	76.25
8/1/2008	8/8/2008	7.84	58.43	71.28
8/1/2008	8/9/2008	7.47	58.43	71.28
8/1/2008	8/10/2008	7.47	61.81	
8/1/2008	8/11/2008	7.47	61.81	73.72
8/1/2008	8/12/2008	7.305	59.3	77.81
8/1/2008	8/13/2008	7.43	60.08	75.97
8/1/2008	8/14/2008	7.29	60.95	77.61
8/1/2008	8/15/2008	7.425	62.38	77.27
8/1/2008	8/16/2008	7.18	62.38	77.27
8/1/2008	8/17/2008	7.18	70.32	
8/1/2008	8/18/2008	7.18	70.32	76.72
8/1/2008	8/19/2008	7.165	57.47	70.58
8/1/2008	8/20/2008	7.215	54.5	65.4
8/1/2008	8/21/2008	7.37	61.54	63.58
8/1/2008	8/22/2008	7.325	50.56	62.06
8/1/2008	8/23/2008	7.265	50.56	62.06
8/1/2008	8/24/2008	7.265	57.42	
8/1/2008	8/25/2008	7.265	57.42	68.79
8/1/2008	8/26/2008	6.935	53.99	68.33
8/1/2008	8/27/2008	7.28	52.73	68.05

8/1/2008	8/28/2008	7.475	52.73	68.05
8/1/2008	8/29/2008	7.1	49.89	62.61
8/1/2008	8/30/2008	7.1	49.89	62.61
8/1/2008	8/31/2008	7.1	53.75	
9/1/2008	9/1/2008	6.875	47.62	
9/1/2008	9/2/2008	6.875	47.62	64.04
9/1/2008	9/3/2008	6.335	44.68	59.75
9/1/2008	9/4/2008	6.115	44.7	60.21
9/1/2008	9/5/2008	6.09	45.58	60
9/1/2008	9/6/2008	6.375	45.58	60
9/1/2008	9/7/2008	6.375	53.68	62.09
9/1/2008	9/8/2008	6.42	47.07	59.81
9/1/2008	9/9/2008	6.065	47.33	56.47
9/1/2008	9/11/2008	6.32	48.05	59.37
9/1/2008	9/12/2008	6.255	49.32	58.73
9/1/2008	9/13/2008	6.045	49.32	58.73
9/1/2008	9/14/2008	6.045	55.44	
9/1/2008	9/15/2008	6.045	55.44	61.07
9/1/2008	9/16/2008	5.855	48.03	61.06
9/1/2008	9/17/2008	5.92	47.41	58.36
9/1/2008	9/18/2008	6.055	47.1	55.67
9/1/2008	9/19/2008	6.445	47.67	58.79
9/1/2008	9/20/2008	6.13	47.67	58.79
9/1/2008	9/21/2008	6.13	51.73	
9/1/2008	9/22/2008	6.13	51.73	56.41
9/1/2008	9/23/2008	5.985	44.24	57.44
9/1/2008	9/24/2008	6.06	43.34	57.94
9/1/2008	9/25/2008	6.405	44.55	60.48
9/1/2008	9/26/2008	6.015	46.87	49.46
9/1/2008	9/27/2008	5.82	46.87	59.46
9/1/2008	9/28/2008	5.82	55.9	
9/1/2008	9/29/2008	5.82	55.9	61.55
9/1/2008	9/30/2008	5.865	45.78	61.18
10/1/2008	10/1/2008	6	45.91	58.64
10/1/2008	10/2/2008	6.23	45.2	57.36
10/1/2008	10/3/2008	6.59	44.13	57.64
10/1/2008	10/4/2008	6.055	44.13	57.64
10/1/2008	10/5/2008	6.055	48.1	55.75
10/1/2008	10/6/2008	6.055	48.1	59.99
10/1/2008	10/7/2008	5.955	40.58	55.99
10/1/2008	10/8/2008	5.955	42.43	54.48
10/1/2008	10/9/2008	5.765	42.33	53.29
10/1/2008	10/10/2008	5.91	43.56	52.51
10/1/2008	10/11/2008	5.74	43.56	52.51
10/1/2008	10/12/2008	5.74	44.12	49.45
10/1/2008	10/13/2008	5.74	44.12	49.98
10/1/2008	10/14/2008	5.825	39.3	49.61
10/1/2008	10/15/2008	5.855	39.03	50.17
10/1/2008	10/16/2008	5.8	38.85	51.08
10/1/2008	10/17/2008	5.885	38.24	51.29
10/1/2008	10/18/2008	6.065	38.24	51.29
10/1/2008	10/19/2008	6.065	45.07	50.5
10/1/2008	10/20/2008	6.065	45.07	51.3
10/1/2008	10/21/2008	6.275	41.2	56.09
10/1/2008	10/22/2008	6.105	42.07	55.36
10/1/2008	10/23/2008	6.335	47.85	59.48
10/1/2008	10/24/2008	6.215	45.63	52.91
10/1/2008	10/25/2008	5.65	45.63	52.91
10/1/2008	10/26/2008	5.65	46.06	50.35
10/1/2008	10/27/2008	5.65	46.06	50.18
10/1/2008	10/28/2008	5.74	42.2	50.22
10/1/2008	10/29/2008	5.73	44.6	51.22
10/1/2008	10/30/2008	5.87	44.6	51.22
10/1/2008	10/31/2008	5.985	48.85	51.12
11/1/2008	11/1/2008	5.6	43.4	48.81
11/1/2008	11/2/2008	5.6	47.7	
11/1/2008	11/3/2008	5.6	47.7	51.62
11/1/2008	11/4/2008	5.535	43.08	50.68
11/1/2008	11/5/2008	5.615	43.84	52.69
11/1/2008	11/6/2008	5.795	44.9	54.85
11/1/2008	11/7/2008	5.935	44.05	50.24
11/1/2008	11/8/2008	5.64	44.05	50.24
11/1/2008	11/9/2008	5.64	46.51	
11/1/2008	11/10/2008	5.64	46.51	49.22
11/1/2008	11/11/2008	6.305	42.18	47.9
11/1/2008	11/12/2008	6.15	42.18	47.9
11/1/2008	11/13/2008	5.835	40.47	46.81
11/1/2008	11/14/2008	5.255	36.6	45.98
11/1/2008	11/15/2008	5.21	36.6	45.98
11/1/2008	11/16/2008	5.21	44.25	
11/1/2008	11/17/2008	5.21	44.25	46.46
11/1/2008	11/18/2008	5.81	45.41	52.3
11/1/2008	11/19/2008	5.94	44.73	47.39
11/1/2008	11/20/2008	5.94	45.87	47.86
11/1/2008	11/21/2008	6.03	43.78	47.36
11/1/2008	11/22/2008	5.89	43.78	47.36
11/1/2008	11/23/2008	5.89	46.54	
11/1/2008	11/24/2008	5.89	46.54	48.44
11/1/2008	11/25/2008	6.185	47.63	49.01
11/1/2008	11/26/2008	6.045	47.63	49.01
11/1/2008	11/27/2008	6.045	47.63	49.02
11/1/2008	11/28/2008	6.045	48.69	47.87
11/1/2008	11/29/2008	6.045	48.69	47.87
11/1/2008	11/30/2008	6.045	48.69	
12/1/2008	12/1/2008	5.32	45.43	49.34
12/1/2008	12/2/2008	5.88	42.47	49.27
12/1/2008	12/3/2008	6.015	39.99	48.68
12/1/2008	12/4/2008	5.79	40.01	47.95
12/1/2008	12/5/2008	6.51	42.17	48.53
12/1/2008	12/6/2008	5.375	42.17	48.53
12/1/2008	12/7/2008	5.375	42.3	
12/1/2008	12/8/2008	5.375	42.3	48.88
12/1/2008	12/9/2008	5.28	40.82	48.61
12/1/2008	12/10/2008	5.36	42.51	49.12
12/1/2008	12/11/2008	5.62	45.3	53.96
12/1/2008	12/12/2008	5.585	45.75	53.72
12/1/2008	12/13/2008	5.585	45.75	53.72
12/1/2008	12/14/2008	5.585	62.55	
12/1/2008	12/15/2008	5.585	62.55	78.36
12/1/2008	12/16/2008	6.665	65.96	91.87
12/1/2008	12/17/2008	6	68.28	97.69
12/1/2008	12/18/2008	6.085	62.01	67.61
12/1/2008	12/19/2008	6.055	56.45	74.4
12/1/2008	12/20/2008	5.975	56.45	74.4
12/1/2008	12/21/2008	5.975	58.71	
12/1/2008	12/22/2008	5.975	58.71	70.58
12/1/2008	12/23/2008	5.6	47.02	60.28
12/1/2008	12/24/2008	5.4	47.02	60.28
12/1/2008	12/25/2008	5.575	47.02	
12/1/2008	12/26/2008	5.575	42.92	54.99
12/1/2008	12/27/2008	5.575	42.92	54.99
12/1/2008	12/28/2008	5.575	43.85	
12/1/2008	12/29/2008	5.575	43.85	56.11
12/1/2008	12/30/2008	5.8	45.55	57.04
12/1/2008	12/31/2008	5.695	45.55	57.04
1/1/2009	1/1/2009	5.51	45.69	
1/1/2009	1/2/2009	5.51	41.98	45.6
1/1/2009	1/3/2009	5.46	41.98	45.6
1/1/2009	1/4/2009	5.46	41.4	
1/1/2009	1/5/2009	5.46	41.4	45.46
1/1/2009	1/6/2009	5.76	39.86	45.44
1/1/2009	1/7/2009	5.905	38.76	43.27
1/1/2009	1/8/2009	5.705	36.1	42.7
1/1/2009	1/9/2009	5.705	39.23	43.86
1/1/2009	1/10/2009	5.33	39.23	43.86
1/1/2009	1/11/2009	5.33	39.03	
1/1/2009	1/12/2009	5.33	39.03	42.07
1/1/2009	1/13/2009	5.15	31.89	39.07
1/1/2009	1/14/2009	5.195	31.57	34.96
1/1/2009	1/15/2009	4.945	31.57	34.96
1/1/2009	1/16/2009	4.82	30.56	33.62
1/1/2009	1/17/2009	4.77	30.56	33.62
1/1/2009	1/18/2009	4.77	32.83	
1/1/2009	1/19/2009	4.77	32.83	34.62
1/1/2009	1/20/2009	4.77	35.58	35.66
1/1/2009	1/21/2009	4.66	36.64	40.14
1/1/2009	1/22/2009	4.675	33.61	38.46
1/1/2009	1/23/2009	4.59	29.57	35.81
1/1/2009	1/24/2009	4.67	29.57	36.81
1/1/2009	1/25/2009	4.67	34.23	
1/1/2009	1/26/2009	4.67	34.23	38.61
1/1/2009	1/27/2009	5.675	33.78	38.12
1/1/2009	1/28/2009	4.66	32.82	38.8
1/1/2009	1/29/2009	4.56	31.93	39.07
1/1/2009	1/30/2009	4.465	30.72	37.69
1/1/2009	1/31/2009	4.465	30.72	37.69
2/1/2009	2/1/2009	4.475	38.05	
2/1/2009	2/2/2009	4.475	38.05	42.26
2/1/2009	2/3/2009	4.17	35.59	39.24
2/1/2009	2/4/2009	4.49	36.76	39.93
2/1/2009	2/5/2009	4.425	38.44	40.75

2/1/2009	2/6/2009	4.435	38.61	40.12
2/1/2009	2/7/2009	4.355	38.61	40.12
2/1/2009	2/8/2009	4.355	41.02	43.32
2/1/2009	2/9/2009	4.355	41.02	43.32
2/1/2009	2/10/2009	4.495	39.87	43.12
2/1/2009	2/11/2009	4.505	39.67	42.76
2/1/2009	2/12/2009	4.44	39.67	42.76
2/1/2009	2/13/2009	4.4	38.97	40.52
2/1/2009	2/14/2009	4.22	38.97	40.52
2/1/2009	2/15/2009	4.22	39.07	40.42
2/1/2009	2/16/2009	4.22	39.07	40.42
2/1/2009	2/17/2009	4.22	38.88	40.66
2/1/2009	2/18/2009	4.02	37.38	39.11
2/1/2009	2/19/2009	3.935	38.4	40.11
2/1/2009	2/20/2009	3.93	35.07	38.29
2/1/2009	2/21/2009	3.66	35.07	38.29
2/1/2009	2/22/2009	3.66	29.68	
2/1/2009	2/23/2009	3.66	29.68	36.4
2/1/2009	2/24/2009	3.815	26.57	31.74
2/1/2009	2/25/2009	3.745	25.69	30.46
2/1/2009	2/26/2009	3.74	27.9	32.21
2/1/2009	2/27/2009	3.625	31.42	34.24
2/1/2009	2/28/2009	3.625	31.42	34.24
3/1/2009	3/1/2009	3.57	31.19	
3/1/2009	3/2/2009	3.57	31.19	32.92
3/1/2009	3/3/2009	3.765	28.02	31.6
3/1/2009	3/4/2009	3.865	28.13	32.52
3/1/2009	3/5/2009	3.78	27.46	32.31
3/1/2009	3/6/2009	3.89	28.67	32.78
3/1/2009	3/7/2009	3.655	28.67	32.79
3/1/2009	3/8/2009	3.655	33.67	35.59
3/1/2009	3/9/2009	3.63	32.56	36.76
3/1/2009	3/10/2009	3.64	37.11	39.55
3/1/2009	3/11/2009	3.685	36.06	38.39
3/1/2009	3/12/2009	3.475	30.24	32.47
3/1/2009	3/13/2009	3.45	30.24	32.47
3/1/2009	3/14/2009	3.45	28.21	
3/1/2009	3/15/2009	3.45	28.21	28.66
3/1/2009	3/16/2009	3.38	23.15	28.48
3/1/2009	3/17/2009	3.34	24.45	28.36
3/1/2009	3/18/2009	3.26	25.86	28.8
3/1/2009	3/19/2009	3.18	24.7	27.24
3/1/2009	3/20/2009	3.495	24.7	27.24
3/1/2009	3/21/2009	3.495	26.55	
3/1/2009	3/22/2009	3.495	26.55	29.23
3/1/2009	3/23/2009	3.67	25.68	30.06
3/1/2009	3/24/2009	3.63	25.37	28.44
3/1/2009	3/25/2009	3.685	25.38	27.77
3/1/2009	3/26/2009	3.67	26.47	28.97
3/1/2009	3/27/2009	3.275	26.47	26.97
3/1/2009	3/28/2009	3.275	25.8	
3/1/2009	3/29/2009	3.275	25.8	26.03
3/1/2009	3/30/2009	3.065	19.68	22.23
3/1/2009	3/31/2009	3.26	26.51	27.79
4/1/2009	4/1/2009	3.19	26.46	27.58
4/1/2009	4/2/2009	3.35	26	26.65
4/1/2009	4/3/2009	3.27	26	26.65
4/1/2009	4/4/2009	3.27	27.77	
4/1/2009	4/5/2009	3.27	27.77	27.77
4/1/2009	4/6/2009	3.325	25.76	27.74
4/1/2009	4/7/2009	3.215	23.91	26.44
4/1/2009	4/8/2009	3.085	23.91	26.44
4/1/2009	4/9/2009	3.08	20.37	23.19
4/1/2009	4/10/2009	3.08	20.37	23.19
4/1/2009	4/11/2009	3.08	16.89	20.97
4/1/2009	4/12/2009	2.985	15.11	17.8
4/1/2009	4/13/2009	3.015	16.24	20.71
4/1/2009	4/14/2009	3.06	17.78	23.33
4/1/2009	4/15/2009	3.01	17.38	21.21
4/1/2009	4/16/2009	2.845	17.38	21.21
4/1/2009	4/17/2009	2.845	18.86	
4/1/2009	4/18/2009	2.845	18.86	23.82
4/1/2009	4/19/2009	2.98	17.7	24.9
4/1/2009	4/20/2009	2.87	12.28	22.37
4/1/2009	4/21/2009	2.895	6	14.85
4/1/2009	4/22/2009	2.89	2.24	13.93
4/1/2009	4/23/2009	2.825	2.24	13.93
4/1/2009	4/24/2009	2.825	7.84	
4/1/2009	4/25/2009	2.825	7.84	19.65
4/1/2009	4/26/2009	2.665	10.48	22.76
4/1/2009	4/27/2009	2.775	13.69	22.67
4/1/2009	4/28/2009	2.935	17.02	24.75
4/1/2009	4/29/2009	2.745	19.2	22.53
4/1/2009	4/30/2009	2.83	19.2	22.53
5/1/2009	5/1/2009	2.83	20.19	
5/1/2009	5/2/2009	2.83	20.19	25.35
5/1/2009	5/3/2009	2.965	19.71	25.08
5/1/2009	5/4/2009	3.135	20.57	27.26
5/1/2009	5/5/2009	3.18	19.88	26.9
5/1/2009	5/6/2009	3.455	19.29	27.03
5/1/2009	5/7/2009	3.65	19.29	27.03
5/1/2009	5/8/2009	3.65	24.9	
5/1/2009	5/9/2009	3.65	24.9	28.95
5/1/2009	5/10/2009	3.785	20.37	25.51
5/1/2009	5/11/2009	3.99	21.31	29.93
5/1/2009	5/12/2009	3.97	21.21	29.54
5/1/2009	5/13/2009	3.675	22.85	29.11
5/1/2009	5/14/2009	3.62	22.85	29.11
5/1/2009	5/15/2009	3.62	29.91	35.53
5/1/2009	5/16/2009	3.685	11.22	24.52
5/1/2009	5/17/2009	3.48	16.97	28.92
5/1/2009	5/18/2009	3.255	16.97	28.92
5/1/2009	5/19/2009	3.27	16.75	24.74
5/1/2009	5/20/2009	2.89	16.75	24.74
5/1/2009	5/21/2009	2.89	15.55	
5/1/2009	5/22/2009	2.89	15.55	
5/1/2009	5/23/2009	2.89	9.48	19.02
5/1/2009	5/24/2009	2.785	2.19	15.62
5/1/2009	5/25/2009	2.88	2.19	15.62
5/1/2009	5/26/2009	2.855	5.04	20.15
5/1/2009	5/27/2009	2.855	5.04	20.15
5/1/2009	5/28/2009	2.855	18.39	
5/1/2009	5/29/2009	3.21	11.15	27.08
5/1/2009	5/30/2009	3.09	7.99	23.89
5/1/2009	5/31/2009	3.12	4.28	23.84
6/1/2009	6/1/2009	2.87	1.81	21.95
6/1/2009	6/2/2009	2.78	0.24	17.31
6/1/2009	6/3/2009	2.6	0.24	17.31
6/1/2009	6/4/2009	2.6	2.72	
6/1/2009	6/5/2009	2.6	2.72	18.44
6/1/2009	6/6/2009	2.49	0.5	15.73
6/1/2009	6/7/2009	2.52	1.37	16.76
6/1/2009	6/8/2009	2.56	5.74	19.56
6/1/2009	6/9/2009	2.565	9.98	22.13
6/1/2009	6/10/2009	2.615	9.98	22.13
6/1/2009	6/11/2009	2.615	19.42	
6/1/2009	6/12/2009	2.615	19.42	24.05
6/1/2009	6/13/2009	2.845	19.68	24.8
6/1/2009	6/14/2009	3.215	19.79	25.52
6/1/2009	6/15/2009	3.185	17.09	25.11
6/1/2009	6/16/2009	3.26	10.57	20.83
6/1/2009	6/17/2009	3.02	10.57	20.83
6/1/2009	6/18/2009	3.02	13.15	
6/1/2009	6/19/2009	3.02	13.15	19.46
6/1/2009	6/20/2009	3.04	10.9	21.54
6/1/2009	6/21/2009	3.02	14.35	22
6/1/2009	6/22/2009	2.94	15.53	22.61
6/1/2009	6/23/2009	3.04	17.93	22.32
6/1/2009	6/24/2009	3	17.93	22.32
6/1/2009	6/25/2009	3	20.55	
6/1/2009	6/26/2009	3	20.55	25.66
6/1/2009	6/27/2009	3.155	25.13	31.58
6/1/2009	6/28/2009	3.1	27.22	35.63
6/1/2009	6/29/2009	2.97	27.22	35.63
6/1/2009	6/30/2009	2.71	25.64	31.1
6/1/2009	7/1/2009	2.71	25.64	
6/1/2009	7/2/2009	2.71	21.93	
6/1/2009	7/3/2009	2.71	21.93	23.31
6/1/2009	7/4/2009	2.63	15.92	20.53
6/1/2009	7/5/2009	2.895	16.88	22.1
6/1/2009	7/6/2009	2.675	16.88	22.68
6/1/2009	7/7/2009	2.71	20	24.72
6/1/2009	7/8/2009	2.6	20	24.72
6/1/2009	7/9/2009	2.6	21.65	
6/1/2009	7/10/2009	2.6	21.65	24.67
6/1/2009	7/11/2009	2.75	21.09	25.37
6/1/2009	7/12/2009	2.86	25.12	33.57
6/1/2009	7/13/2009	3	28.39	38.13
6/1/2009	7/14/2009	2.83	24.13	34.59

7/1/2009	7/18/2009	2.965	24.13	34.59
7/1/2009	7/19/2009	2.965	29.03	
7/1/2009	7/20/2009	2.965	29.03	36.82
7/1/2009	7/21/2009	3.195	29.7	40.97
7/1/2009	7/22/2009	3.19	32.35	43.26
7/1/2009	7/23/2009	3.3	30.67	44.48
7/1/2009	7/24/2009	3.475	31.72	46.79
7/1/2009	7/25/2009	3.195	31.72	46.79
7/1/2009	7/26/2009	3.195	34.76	
7/1/2009	7/27/2009	3.195	34.76	48.84
7/1/2009	7/28/2009	3.26	31.42	48.55
7/1/2009	7/29/2009	3.225	33.26	47.57
7/1/2009	7/30/2009	3.12	33.26	47.57
7/1/2009	7/31/2009	3.015	32.3	41.15
8/1/2009	8/1/2009	2.96	29.38	37.14
8/1/2009	8/2/2009	2.96	32.82	
8/1/2009	8/3/2009	2.96	32.82	38.74
8/1/2009	8/4/2009	3.125	28.81	36.74
8/1/2009	8/5/2009	3.255	30.78	38.19
8/1/2009	8/6/2009	3.44	30.34	35.68
8/1/2009	8/7/2009	3.52	33.02	37.61
8/1/2009	8/8/2009	3.34	33.02	37.61
8/1/2009	8/9/2009	3.34	34.1	
8/1/2009	8/10/2009	3.34	34.1	39.62
8/1/2009	8/11/2009	3.295	31.84	41.5
8/1/2009	8/12/2009	3.21	31.86	41.98
8/1/2009	8/13/2009	3.045	31.24	40.64
8/1/2009	8/14/2009	3.075	30.14	39.11
8/1/2009	8/15/2009	2.945	30.14	39.11
8/1/2009	8/16/2009	2.945	34.05	
8/1/2009	8/17/2009	2.945	34.05	43.09
8/1/2009	8/18/2009	2.87	31.99	43.73
8/1/2009	8/19/2009	2.815	31.14	42.67
8/1/2009	8/20/2009	2.735	28.77	38.93
8/1/2009	8/21/2009	2.72	26.17	34.49
8/1/2009	8/22/2009	2.515	26.17	34.49
8/1/2009	8/23/2009	2.515	26.69	
8/1/2009	8/24/2009	2.515	28.69	34.61
8/1/2009	8/25/2009	2.465	22.76	32.77
8/1/2009	8/26/2009	2.545	25.62	35.11
8/1/2009	8/27/2009	2.545	27.62	38.52
8/1/2009	8/28/2009	2.56	25.11	36.77
8/1/2009	8/29/2009	2.375	25.11	36.77
8/1/2009	8/30/2009	2.375	27.13	
8/1/2009	8/31/2009	2.375	27.13	38.12
9/1/2009	9/1/2009	2.46	26.77	38.83
9/1/2009	9/2/2009	2.405	23.93	36.57
9/1/2009	9/3/2009	2.39	23.93	36.57
9/1/2009	9/4/2009	2.325	18.75	30.04
9/1/2009	9/5/2009	2.14	18.75	30.04
9/1/2009	9/6/2009	2.14	19.99	
9/1/2009	9/7/2009	2.14	19.99	
9/1/2009	9/8/2009	2.14	17.66	31.81
9/1/2009	9/9/2009	2.565	18.59	33.17
9/1/2009	9/10/2009	2.895	22.01	38.01
9/1/2009	9/11/2009	2.84	22.01	37.42
9/1/2009	9/12/2009	3.105	22.01	37.42
9/1/2009	9/13/2009	3.105	30.57	
9/1/2009	9/14/2009	3.105	30.57	42.14
9/1/2009	9/15/2009	2.905	26.66	41.49
9/1/2009	9/16/2009	3.455	30.99	47.99
9/1/2009	9/17/2009	3.545	30.43	45.7
9/1/2009	9/18/2009	3.645	25.17	41.23
9/1/2009	9/19/2009	3.42	25.17	41.23
9/1/2009	9/20/2009	3.42	29.6	
9/1/2009	9/21/2009	3.42	29.6	40.04
9/1/2009	9/22/2009	3.53	27.5	44.13
9/1/2009	9/23/2009	3.46	28.03	42.88
9/1/2009	9/24/2009	3.49	27.06	38.65
9/1/2009	9/25/2009	3.625	24.68	34.64
9/1/2009	9/26/2009	3.585	24.68	34.64
9/1/2009	9/27/2009	3.585	30.59	
9/1/2009	9/28/2009	3.585	30.59	36.7
9/1/2009	9/29/2009	3.68	30.21	39.08
9/1/2009	9/30/2009	3.525	27.73	36.91
10/1/2009	10/1/2009	3.69	29.7	36.92
10/1/2009	10/2/2009	3.425	32.12	36.56
10/1/2009	10/3/2009	2.84	32.12	36.56
10/1/2009	10/4/2009	2.64	31.27	
10/1/2009	10/5/2009	2.64	31.27	34.5
10/1/2009	10/6/2009	3.21	25.29	32.55
10/1/2009	10/7/2009	3.675	26.77	32.87
10/1/2009	10/8/2009	4.255	31.54	37.89
10/1/2009	10/9/2009	4.54	33.68	39.44
10/1/2009	10/10/2009	4.36	33.68	39.44
10/1/2009	10/11/2009	4.36	38.23	
10/1/2009	10/12/2009	4.36	38.23	41.1
10/1/2009	10/13/2009	4.635	40.2	45.19
10/1/2009	10/14/2009	4.71	42.13	46.04
10/1/2009	10/15/2009	4.67	36.18	44.19
10/1/2009	10/16/2009	4.73	37.84	43.83
10/1/2009	10/17/2009	4.735	37.84	43.83
10/1/2009	10/18/2009	4.735	41.89	
10/1/2009	10/19/2009	4.735	41.89	46.34
10/1/2009	10/20/2009	4.765	37.55	46.19
10/1/2009	10/21/2009	4.985	37.65	47.94
10/1/2009	10/22/2009	5.14	39.04	50.07
10/1/2009	10/23/2009	5.145	37.52	49.93
10/1/2009	10/24/2009	4.945	37.52	49.93
10/1/2009	10/25/2009	4.945	47.77	
10/1/2009	10/26/2009	4.945	47.77	54.16
10/1/2009	10/27/2009	4.705	39.54	53.04
10/1/2009	10/28/2009	4.93	35.62	50.22
10/1/2009	10/29/2009	5.06	39.54	51.78
10/1/2009	10/30/2009	4.755	34.86	45.51
10/1/2009	10/31/2009	4.755	34.86	45.51
11/1/2009	11/1/2009	4.63	36.3	
11/1/2009	11/2/2009	4.63	36.3	42.85
11/1/2009	11/3/2009	4.37	31.84	39.39
11/1/2009	11/4/2009	4.37	31.81	40.66
11/1/2009	11/5/2009	4.525	33.19	41.72
11/1/2009	11/6/2009	4.325	25.61	36.38
11/1/2009	11/7/2009	3.755	25.61	36.38
11/1/2009	11/8/2009	3.755	29.04	
11/1/2009	11/9/2009	3.755	29.04	36.99
11/1/2009	11/10/2009	3.885	33.55	39.14
11/1/2009	11/11/2009	3.89	32.67	39.61
11/1/2009	11/12/2009	3.825	32.67	39.61
11/1/2009	11/13/2009	3.645	27.4	35.38
11/1/2009	11/14/2009	2.715	27.4	35.38
11/1/2009	11/15/2009	2.715	27.12	
11/1/2009	11/16/2009	2.715	27.12	30.64
11/1/2009	11/17/2009	3.205	21.07	29
11/1/2009	11/18/2009	4.24	26.64	31.82
11/1/2009	11/19/2009	4.1	28.44	36.72
11/1/2009	11/20/2009	3.75	24.54	34.11
11/1/2009	11/21/2009	3.26	24.54	34.11
11/1/2009	11/22/2009	3.26	28.33	
11/1/2009	11/23/2009	3.26	28.33	34.64
11/1/2009	11/24/2009	4.37	28.39	35.21
11/1/2009	11/25/2009	4.065	28.39	35.21
11/1/2009	11/26/2009	3.84	28.46	
11/1/2009	11/27/2009	3.84	28.46	30.72
11/1/2009	11/28/2009	3.84	28.46	30.72
11/1/2009	11/29/2009	3.84	29.25	33.43
12/1/2009	12/1/2009	4.805	34.28	43.34
12/1/2009	12/2/2009	4.81	36.14	42.8
12/1/2009	12/3/2009	5.01	42.52	47.16
12/1/2009	12/4/2009	4.835	41.62	47.44
12/1/2009	12/5/2009	4.94	41.62	47.44
12/1/2009	12/6/2009	4.94	44.11	
12/1/2009	12/7/2009	4.94	44.11	54.37
12/1/2009	12/8/2009	5.425	53.82	64.14
12/1/2009	12/9/2009	5.72	76.33	108.81
12/1/2009	12/10/2009	5.74	67.22	93.22
12/1/2009	12/11/2009	5.405	51.91	62.45
12/1/2009	12/12/2009	5.57	51.91	62.45
12/1/2009	12/13/2009	5.57	48.6	
12/1/2009	12/14/2009	5.57	48.6	56.96
12/1/2009	12/15/2009	5.65	39.95	50.07
12/1/2009	12/16/2009	5.665	40.45	51.39
12/1/2009	12/17/2009	5.82	39.76	50
12/1/2009	12/18/2009	5.6	43.16	51.63
12/1/2009	12/19/2009	5.835	43.16	51.63
12/1/2009	12/20/2009	5.835	48.39	
12/1/2009	12/21/2009	5.835	48.39	54.93
12/1/2009	12/22/2009	5.765	40.88	55.11
12/1/2009	12/23/2009	5.7	40.88	55.11
12/1/2009	12/24/2009	5.785	41.76	49.08
12/1/2009	12/25/2009	5.985	41.76	49.08
12/1/2009	12/26/2009	5.985	41.76	49.08

12/1/2009	12/27/2009	5.985	42.81	
12/1/2009	12/28/2009	5.985	42.81	48.41
12/1/2009	12/29/2009	6.115	44.66	52.9
12/1/2009	12/30/2009	6.05	45.4	54.28
12/1/2009	12/31/2009	5.93	45.4	54.28
1/1/2010	1/1/2010	5.8	42.39	
1/1/2010	1/2/2010	5.8	42.39	45.71
1/1/2010	1/3/2010	5.8	43.26	
1/1/2010	1/4/2010	5.8	43.26	48.05
1/1/2010	1/5/2010	5.94	42.29	50.33
1/1/2010	1/6/2010	5.87	40.76	47.84
1/1/2010	1/7/2010	5.89	39.43	46.39
1/1/2010	1/8/2010	6.115	43.01	51.14
1/1/2010	1/9/2010	5.65	43.01	51.14
1/1/2010	1/10/2010	5.65	41.11	
1/1/2010	1/11/2010	5.65	41.11	45.37
1/1/2010	1/12/2010	5.51	36.89	43.06
1/1/2010	1/13/2010	5.525	37.16	43.38
1/1/2010	1/14/2010	5.505	37.16	43.38
1/1/2010	1/15/2010	5.715	38.03	43.09
1/1/2010	1/16/2010	5.61	38.03	43.09
1/1/2010	1/17/2010	5.61	42.13	
1/1/2010	1/18/2010	5.61	42.13	45.85
1/1/2010	1/19/2010	5.61	41.96	47.82
1/1/2010	1/20/2010	5.48	37.31	47.91
1/1/2010	1/21/2010	5.49	39.55	48.91
1/1/2010	1/22/2010	5.535	37.94	45.37
1/1/2010	1/23/2010	5.71	37.94	45.37
1/1/2010	1/24/2010	5.71	42.5	
1/1/2010	1/25/2010	5.71	42.5	48.49
1/1/2010	1/26/2010	5.675	41.8	49.81
1/1/2010	1/27/2010	5.57	42.26	48.62
1/1/2010	1/28/2010	5.43	42.26	48.62
1/1/2010	1/29/2010	5.285	41.54	44.83
1/1/2010	1/30/2010	5.285	41.54	44.83
1/1/2010	1/31/2010	5.285	41.71	
2/1/2010	2/1/2010	5.27	38.65	45.66
2/1/2010	2/2/2010	5.345	37.92	44.72
2/1/2010	2/3/2010	5.43	40.04	46.9
2/1/2010	2/4/2010	5.445	41.09	48.24
2/1/2010	2/5/2010	5.41	43.11	48.01
2/1/2010	2/6/2010	5.495	43.11	48.01
2/1/2010	2/7/2010	5.495	43.15	
2/1/2010	2/8/2010	5.495	43.15	48.77
2/1/2010	2/9/2010	5.62	39.91	47.23
2/1/2010	2/10/2010	5.38	42.53	46.64
2/1/2010	2/11/2010	5.325	42.53	46.64
2/1/2010	2/12/2010	5.35	43.37	47.01
2/1/2010	2/13/2010	5.305	43.37	47.01
2/1/2010	2/14/2010	5.305	42.98	
2/1/2010	2/15/2010	5.305	42.98	46.71
2/1/2010	2/16/2010	5.305	38.4	44.39
2/1/2010	2/17/2010	5.44	38.01	42.85
2/1/2010	2/18/2010	5.21	37.31	42.05
2/1/2010	2/19/2010	5.19	36.79	40.62
2/1/2010	2/20/2010	4.95	36.79	40.62
2/1/2010	2/21/2010	4.95	37.84	
2/1/2010	2/22/2010	4.95	37.84	40.33
2/1/2010	2/23/2010	4.93	37.43	40.93
2/1/2010	2/24/2010	4.905	38.43	41.58
2/1/2010	2/25/2010	4.92	38.43	41.58
2/1/2010	2/26/2010	4.8	39.07	42.13
2/1/2010	2/27/2010	4.8	39.07	42.13
2/1/2010	2/28/2010	4.8	39.91	
3/1/2010	3/1/2010	4.755	36.92	41.58
3/1/2010	3/2/2010	4.755	36.21	41.03
3/1/2010	3/3/2010	4.735	34.34	39.69
3/1/2010	3/4/2010	4.685	34.7	39.46
3/1/2010	3/5/2010	4.7	36.85	39.75
3/1/2010	3/6/2010	4.555	36.65	39.75
3/1/2010	3/7/2010	4.555	39.45	
3/1/2010	3/8/2010	4.555	39.45	41.42
3/1/2010	3/9/2010	4.595	38.52	40.34
3/1/2010	3/10/2010	4.645	39.54	44.12
3/1/2010	3/11/2010	4.55	39.92	44.03
3/1/2010	3/12/2010	4.555	38.79	42.34
3/1/2010	3/13/2010	4.45	38.79	42.34
3/1/2010	3/14/2010	4.45	37.36	
3/1/2010	3/15/2010	4.45	37.36	40.13
3/1/2010	3/16/2010	4.375	36.17	41.92
3/1/2010	3/17/2010	4.425	36.71	43.12
3/1/2010	3/18/2010	4.33	34.71	42.76
3/1/2010	3/19/2010	4.21	31.1	38.49
3/1/2010	3/20/2010	4.01	31.1	38.49
3/1/2010	3/21/2010	4.01	31.6	
3/1/2010	3/22/2010	4.01	31.6	37.93
3/1/2010	3/23/2010	4.02	27.34	38.34
3/1/2010	3/24/2010	4.045	28.28	39.42
3/1/2010	3/25/2010	4.01	27.5	38.15
3/1/2010	3/26/2010	4.02	26.5	36.81
3/1/2010	3/27/2010	3.88	26.5	36.81
3/1/2010	3/28/2010	3.88	27.77	36.63
3/1/2010	3/29/2010	3.88	27.77	36.63
3/1/2010	3/30/2010	3.885	29.99	38.72
3/1/2010	3/31/2010	3.895	31.21	40.03
4/1/2010	4/1/2010	4.01	32.65	40.07
4/1/2010	4/2/2010	3.855	32.65	40.07
4/1/2010	4/3/2010	3.855	32.65	40.07
4/1/2010	4/4/2010	3.855	32.78	
4/1/2010	4/5/2010	3.855	32.78	37.96
4/1/2010	4/6/2010	4.095	29.75	37.42
4/1/2010	4/7/2010	4.265	31.76	41.61
4/1/2010	4/8/2010	4.165	32.32	41.18
4/1/2010	4/9/2010	4.03	37.79	45.73
4/1/2010	4/10/2010	3.955	37.79	45.73
4/1/2010	4/11/2010	3.955	41.75	
4/1/2010	4/12/2010	3.955	41.75	48.68
4/1/2010	4/13/2010	4.13	31.98	41.58
4/1/2010	4/14/2010	4.025	31.78	41.58
4/1/2010	4/15/2010	4.155	33	43.44
4/1/2010	4/16/2010	4.14	32.25	41.81
4/1/2010	4/17/2010	3.98	32.25	41.81
4/1/2010	4/18/2010	3.98	32.35	
4/1/2010	4/19/2010	3.98	32.35	40.05
4/1/2010	4/20/2010	4.005	27.26	35.41
4/1/2010	4/21/2010	3.885	25.07	31.34
4/1/2010	4/22/2010	3.87	26.15	31.39
4/1/2010	4/23/2010	3.84	26.77	30.26
4/1/2010	4/24/2010	3.855	26.77	30.26
4/1/2010	4/25/2010	3.855	28.21	
4/1/2010	4/26/2010	3.855	28.21	33.27
4/1/2010	4/27/2010	4.12	29.13	34.01
4/1/2010	4/28/2010	4.09	30.18	34.51
4/1/2010	4/29/2010	4.075	30.18	34.51
4/1/2010	4/30/2010	4.045	26.9	31.93
5/1/2010	5/1/2010	3.775	26.24	29.96
5/1/2010	5/2/2010	3.775	27.11	
5/1/2010	5/3/2010	3.775	27.11	32.65
5/1/2010	5/4/2010	3.745	27.66	32.14
5/1/2010	5/5/2010	3.84	31.61	33.99
5/1/2010	5/6/2010	3.84	34.67	36.84
5/1/2010	5/7/2010	3.755	35.79	36.87
5/1/2010	5/8/2010	3.725	35.79	36.87
5/1/2010	5/9/2010	3.725	34.04	
5/1/2010	5/10/2010	3.725	34.04	36.07
5/1/2010	5/11/2010	3.91	26.33	32.19
5/1/2010	5/12/2010	3.895	26.49	33.04
5/1/2010	5/13/2010	3.945	27.07	33.19
5/1/2010	5/14/2010	3.95	28.37	33.27
5/1/2010	5/15/2010	3.98	28.37	33.27
5/1/2010	5/16/2010	3.98	28.76	
5/1/2010	5/17/2010	3.98	28.76	31.6
5/1/2010	5/18/2010	4.035	23.34	30.22
5/1/2010	5/19/2010	4.105	23.95	30.38
5/1/2010	5/20/2010	3.975	15.67	25.67
5/1/2010	5/21/2010	3.795	10.02	19.23
5/1/2010	5/22/2010	3.76	10.02	19.23
5/1/2010	5/23/2010	3.76	16.91	
5/1/2010	5/24/2010	3.76	16.91	24.89
5/1/2010	5/25/2010	3.78	20.56	27.45
5/1/2010	5/26/2010	3.725	24.29	29.5
5/1/2010	5/27/2010	3.81	24.29	29.5
5/1/2010	5/28/2010	3.865	23.32	26.5
5/1/2010	5/29/2010	3.855	22.32	25.5
5/1/2010	5/30/2010	3.855	22.2	
5/1/2010	5/31/2010	3.855	22.2	
6/1/2010	6/1/2010	3.915	21.79	27.14
6/1/2010	6/2/2010	3.95	11.18	22.63
6/1/2010	6/3/2010	3.91	12.69	22.17
6/1/2010	6/4/2010	4.005	8.7	17.02
6/1/2010	6/5/2010	4.155	8.7	17.02
6/1/2010	6/6/2010	4.155	9.43	

6/1/2010	6/7/2010	4.155	9.43	21.26
6/1/2010	6/8/2010	4.255	0.05	10.65
6/1/2010	6/9/2010	4.385	-0.25	9.62
6/1/2010	6/10/2010	4.235	-0.54	7.34
6/1/2010	6/11/2010	4.17	-1.16	4.43
6/1/2010	6/12/2010	4.13	-1.16	4.43
6/1/2010	6/13/2010	4.13	-0.91	
6/1/2010	6/14/2010	4.13	-0.91	6.13
6/1/2010	6/15/2010	4.295	0.42	10.9
6/1/2010	6/16/2010	4.345	0.42	12.44
6/1/2010	6/17/2010	4.275	-0.17	11.8
6/1/2010	6/18/2010	4.255	0.27	7.53
6/1/2010	6/19/2010	4.17	0.27	
6/1/2010	6/20/2010	4.17	0.27	
6/1/2010	6/21/2010	4.17	0.27	12.64
6/1/2010	6/22/2010	4.215	1.29	17.13
6/1/2010	6/23/2010	4.035	1	24.68
6/1/2010	6/24/2010	4.135	0.59	25.96
6/1/2010	6/25/2010	4.16	0.47	19.65
6/1/2010	6/26/2010	4.155	0.47	19.65
6/1/2010	6/27/2010	4.155	5.93	
6/1/2010	6/28/2010	4.155	5.93	31.14
6/1/2010	6/29/2010	4.07	0.97	32.15
6/1/2010	6/30/2010	3.99	0.8	32.75
7/1/2010	7/1/2010	3.89	1.51	30.05
7/1/2010	7/2/2010	3.825	4.22	27.3
7/1/2010	7/3/2010	3.845	4.22	27.3
7/1/2010	7/4/2010	3.845	16.68	
7/1/2010	7/5/2010	3.845	16.68	
7/1/2010	7/6/2010	3.845	16.68	37.11
7/1/2010	7/7/2010	4.02	22.19	40.46
7/1/2010	7/8/2010	3.955	17.68	37.46
7/1/2010	7/9/2010	3.885	18.28	31.82
7/1/2010	7/10/2010	3.645	18.28	31.82
7/1/2010	7/11/2010	3.645	21.56	
7/1/2010	7/12/2010	3.645	21.56	30.72
7/1/2010	7/13/2010	3.73	20.32	30.69
7/1/2010	7/14/2010	3.735	21.98	33.62
7/1/2010	7/15/2010	3.685	24.3	35.92
7/1/2010	7/16/2010	3.765	24.4	37.65
7/1/2010	7/17/2010	3.955	24.4	37.65
7/1/2010	7/18/2010	3.955	30.72	
7/1/2010	7/19/2010	3.955	30.72	39.1
7/1/2010	7/20/2010	3.84	28.6	41.41
7/1/2010	7/21/2010	3.945	27.83	40.18
7/1/2010	7/22/2010	4.065	24.42	37.86
7/1/2010	7/23/2010	4.075	27.29	39.43
7/1/2010	7/24/2010	3.985	27.29	39.43
7/1/2010	7/25/2010	3.985	32.25	
7/1/2010	7/26/2010	3.985	32.25	41.33
7/1/2010	7/27/2010	3.95	30.48	43.63
7/1/2010	7/28/2010	3.92	30.37	41.58
7/1/2010	7/29/2010	3.92	32.03	42.8
7/1/2010	7/30/2010	3.96	28.05	37.77
8/1/2010	8/1/2010	4.02	29.46	
8/1/2010	8/2/2010	4.02	29.46	42.83
8/1/2010	8/3/2010	4.095	29.17	42.6
8/1/2010	8/4/2010	4	29.5	41.59
8/1/2010	8/5/2010	3.965	29.74	42.41
8/1/2010	8/6/2010	3.98	27.95	37.59
8/1/2010	8/7/2010	3.81	27.95	37.59
8/1/2010	8/8/2010	3.81	29	
8/1/2010	8/9/2010	3.81	29	37.01
8/1/2010	8/10/2010	3.78	27.38	36.33
8/1/2010	8/11/2010	3.675	26.97	37.97
8/1/2010	8/12/2010	3.59	28.09	39.92
8/1/2010	8/13/2010	3.585	29.35	43.97
8/1/2010	8/14/2010	3.525	29.35	43.97
8/1/2010	8/15/2010	3.525	38.44	
8/1/2010	8/16/2010	3.525	38.44	50.01
8/1/2010	8/17/2010	3.525	28.02	41.87
8/1/2010	8/18/2010	3.365	23.74	34.45
8/1/2010	8/19/2010	3.395	23.39	33.96
8/1/2010	8/20/2010	3.295	24.02	34.7
8/1/2010	8/21/2010	3.265	24.02	34.7
8/1/2010	8/22/2010	3.265	26.47	
8/1/2010	8/23/2010	3.265	26.47	38.06
8/1/2010	8/24/2010	3.315	27.91	46.64
8/1/2010	8/25/2010	3.385	28.83	49.42
8/1/2010	8/26/2010	3.31	23.87	38.44
8/1/2010	8/27/2010	3.27	23.84	36.29
8/1/2010	8/28/2010	3.25	23.84	36.29
8/1/2010	8/29/2010	3.25	24.71	
8/1/2010	8/30/2010	3.25	24.71	37.22
9/1/2010	9/1/2010	3.32	21.15	37.64
9/1/2010	9/1/2010	3.315	22.27	37.95
9/1/2010	9/2/2010	3.42	22.27	37.95
9/1/2010	9/3/2010	3.635	21.62	35.72
9/1/2010	9/4/2010	3.505	21.62	35.72
9/1/2010	9/5/2010	3.505	26.9	
9/1/2010	9/6/2010	3.505	26.9	
9/1/2010	9/7/2010	3.505	25.96	36.51
9/1/2010	9/8/2010	3.49	26.61	37.12
9/1/2010	9/9/2010	3.455	26.66	35.1
9/1/2010	9/10/2010	3.48	24.21	33.83
9/1/2010	9/11/2010	3.555	24.21	33.83
9/1/2010	9/12/2010	3.555	28.99	
9/1/2010	9/13/2010	3.555	28.99	37.74
9/1/2010	9/14/2010	3.66	28.24	39.16
9/1/2010	9/15/2010	3.945	29.71	40.33
9/1/2010	9/16/2010	3.915	30.35	39.74
9/1/2010	9/17/2010	3.885	29.07	37.79
9/1/2010	9/18/2010	3.845	29.07	37.79
9/1/2010	9/19/2010	3.845	32.22	
9/1/2010	9/20/2010	3.845	32.22	36.63
9/1/2010	9/21/2010	3.8	27.36	36.5
9/1/2010	9/22/2010	3.785	27.64	35.35
9/1/2010	9/23/2010	3.83	27.29	34.66
9/1/2010	9/24/2010	3.865	28.23	35.72
9/1/2010	9/25/2010	3.77	28.23	35.72
9/1/2010	9/26/2010	3.77	32.76	
9/1/2010	9/27/2010	3.77	32.76	39.26
9/1/2010	9/28/2010	3.64	28.13	35.7
9/1/2010	9/29/2010	3.69	30.25	36.07
9/1/2010	9/30/2010	3.66	32.63	35.92
10/1/2010	10/1/2010	3.575	28.86	32.4
10/1/2010	10/2/2010	3.375	28.86	32.4
10/1/2010	10/3/2010	3.375	26.04	
10/1/2010	10/4/2010	3.375	26.04	29.43
10/1/2010	10/5/2010	3.36	28.08	29.57
10/1/2010	10/6/2010	3.435	28.14	26.89
10/1/2010	10/7/2010	3.38	26.64	27.49
10/1/2010	10/8/2010	3.36	25.68	26.53
10/1/2010	10/9/2010	3.15	25.68	26.53
10/1/2010	10/10/2010	3.15	26.34	
10/1/2010	10/11/2010	3.15	26.34	27.94
10/1/2010	10/12/2010	3.285	29.81	30.98
10/1/2010	10/13/2010	3.355	32.49	33.44
10/1/2010	10/14/2010	3.57	30.02	31.72
10/1/2010	10/15/2010	3.47	29.04	30.72
10/1/2010	10/16/2010	3.39	29.04	30.72
10/1/2010	10/17/2010	3.39	33.21	
10/1/2010	10/18/2010	3.39	33.21	34.25
10/1/2010	10/19/2010	3.42	31.89	34.6
10/1/2010	10/20/2010	3.515	31.85	35.27
10/1/2010	10/21/2010	3.575	30.92	35.06
10/1/2010	10/22/2010	3.59	28.42	32.04
10/1/2010	10/23/2010	3.405	28.42	32.04
10/1/2010	10/24/2010	3.405	26.2	
10/1/2010	10/25/2010	3.405	26.2	30.79
10/1/2010	10/26/2010	3.48	25.84	30.96
10/1/2010	10/27/2010	3.55	29.6	33.72
10/1/2010	10/28/2010	3.58	29.6	33.72
10/1/2010	10/29/2010	3.52	31.04	33.77
10/1/2010	10/30/2010	3.52	31.04	33.77
10/1/2010	10/31/2010	3.52	31.43	
11/1/2010	11/1/2010	3.535	25.75	31.51
11/1/2010	11/2/2010	3.575	24.72	30.53
11/1/2010	11/3/2010	3.385	23.22	29.66
11/1/2010	11/4/2010	3.47	23.29	29.15
11/1/2010	11/5/2010	3.545	23.88	28.56
11/1/2010	11/6/2010	3.455	23.88	29.56
11/1/2010	11/7/2010	3.455	26.82	
11/1/2010	11/8/2010	3.455	26.82	30.5
11/1/2010	11/9/2010	3.715	26.61	30.96
11/1/2010	11/10/2010	4.075	31.7	34.8
11/1/2010	11/11/2010	4.045	31.7	34.8
11/1/2010	11/12/2010	3.875	30.1	34.62
11/1/2010	11/13/2010	3.725	30.1	34.62
11/1/2010	11/14/2010	3.725	28.13	
11/1/2010	11/15/2010	3.725	28.13	31.04

11/1/2010	11/16/2010	3.75	22.9	28.9
11/1/2010	11/17/2010	3.805	27	31.24
11/1/2010	11/18/2010	3.9	28.41	31.9
11/1/2010	11/19/2010	3.905	29.86	34.75
11/1/2010	11/20/2010	4.205	29.86	34.75
11/1/2010	11/21/2010	4.205	37.15	
11/1/2010	11/22/2010	4.205	37.15	44.87
11/1/2010	11/23/2010	4.445	39.66	52.97
11/1/2010	11/24/2010	4.395	39.66	52.97
11/1/2010	11/25/2010	4.38	32.2	
11/1/2010	11/26/2010	4.38	32.2	35.22
11/1/2010	11/27/2010	4.38	32.2	35.22
11/1/2010	11/28/2010	4.38	33.29	
11/1/2010	11/29/2010	4.38	33.29	38.75
11/1/2010	11/30/2010	4.425	33.14	39.37
12/1/2010	12/1/2010	4.2	33.59	40.03
12/1/2010	12/2/2010	4.15	35.17	40.46
12/1/2010	12/3/2010	4.205	33.8	37.57
12/1/2010	12/4/2010	4.245	33.8	37.57
12/1/2010	12/5/2010	4.245	35.35	
12/1/2010	12/6/2010	4.245	35.35	36.62
12/1/2010	12/7/2010	4.35	32.25	35.7
12/1/2010	12/8/2010	4.26	31.53	34.91
12/1/2010	12/9/2010	4.32	29.25	33.61
12/1/2010	12/10/2010	4.34	29.04	33.68
12/1/2010	12/11/2010	4.21	29.04	33.68
12/1/2010	12/12/2010	4.21	29.77	
12/1/2010	12/13/2010	4.21	29.77	33.67
12/1/2010	12/14/2010	4.36	30.18	34.53
12/1/2010	12/15/2010	4.265	31.04	37.39
12/1/2010	12/16/2010	4.225	31.15	36.05
12/1/2010	12/17/2010	4.165	29.63	33.11
12/1/2010	12/18/2010	3.97	29.63	33.11
12/1/2010	12/19/2010	3.97	30.08	
12/1/2010	12/20/2010	3.97	30.08	33.3
12/1/2010	12/21/2010	4.045	29.76	33.37
12/1/2010	12/22/2010	4.05	29.3	32.25
12/1/2010	12/23/2010	3.905	29.3	32.25
12/1/2010	12/24/2010	3.905	27.2	29.21
12/1/2010	12/25/2010	3.905	27.2	
12/1/2010	12/26/2010	3.905	29.81	
12/1/2010	12/27/2010	3.905	29.81	31.09
12/1/2010	12/28/2010	3.91	27.93	31.36
12/1/2010	12/29/2010	4.025	27.93	31.36
12/1/2010	12/30/2010	4.23	32.71	35.65
12/1/2010	12/31/2010	4.23	32.71	35.65
1/1/2011	1/1/2011	4.27	33.88	
1/1/2011	1/2/2011	4.27	31.78	
1/1/2011	1/3/2011	4.27	31.78	33.89
1/1/2011	1/4/2011	4.62	33.64	36.94
1/1/2011	1/5/2011	4.625	33.76	37.4
1/1/2011	1/6/2011	4.48	31.27	35.59
1/1/2011	1/7/2011	4.465	30.6	33.93
1/1/2011	1/8/2011	4.465	30.6	33.93
1/1/2011	1/9/2011	4.465	38.68	
1/1/2011	1/10/2011	4.465	38.68	42.06
1/1/2011	1/11/2011	4.34	33.09	39.08
1/1/2011	1/12/2011	4.21	27.77	31.42
1/1/2011	1/13/2011	4.27	27.77	31.42
1/1/2011	1/14/2011	4.24	27.56	30.96
1/1/2011	1/15/2011	4.16	27.56	30.96
1/1/2011	1/16/2011	4.16	26.31	
1/1/2011	1/17/2011	4.16	26.31	29.24
1/1/2011	1/18/2011	4.16	24.77	27.92
1/1/2011	1/19/2011	4.295	20.37	27.38
1/1/2011	1/20/2011	4.165	19.29	27.24
1/1/2011	1/21/2011	4.145	13.69	24.53
1/1/2011	1/22/2011	4.295	13.69	24.53
1/1/2011	1/23/2011	4.295	5.41	
1/1/2011	1/24/2011	4.295	5.41	18.23
1/1/2011	1/25/2011	4.29	2.66	17.49
1/1/2011	1/26/2011	4.115	5.15	22.71
1/1/2011	1/27/2011	4.07	6.59	25.43
1/1/2011	1/28/2011	4.06	6.6	24.39
1/1/2011	1/29/2011	4.02	6.6	24.39
1/1/2011	1/30/2011	4.02	15.07	
1/1/2011	1/31/2011	4.02	15.07	24.58
2/1/2011	2/1/2011	4.305	25.57	32.71
2/1/2011	2/2/2011	4.415	28.55	36
2/1/2011	2/3/2011	4.465	28.26	33.97
2/1/2011	2/4/2011	4.39	19.03	25.13
2/1/2011	2/5/2011	4.175	19.03	25.13
2/1/2011	2/6/2011	4.175	20.47	
2/1/2011	2/7/2011	4.175	20.47	24.01
2/1/2011	2/8/2011	4.045	20.93	30.38
2/1/2011	2/9/2011	3.96	14.94	30.14
2/1/2011	2/10/2011	3.945	11.06	30.47
2/1/2011	2/11/2011	3.855	2.85	18.33
2/1/2011	2/12/2011	3.72	2.85	18.33
2/1/2011	2/13/2011	3.72	2.3	
2/1/2011	2/14/2011	3.72	2.3	22.23
2/1/2011	2/15/2011	3.705	-0.45	17.54
2/1/2011	2/16/2011	3.765	-0.32	22.65
2/1/2011	2/17/2011	3.855	-0.32	22.65
2/1/2011	2/18/2011	3.865	13.95	30.45
2/1/2011	2/19/2011	3.82	13.95	30.45
2/1/2011	2/20/2011	3.82	22.34	
2/1/2011	2/21/2011	3.82	22.34	28.13
2/1/2011	2/22/2011	3.82	15.95	23.15
2/1/2011	2/23/2011	3.92	14.47	31.37
2/1/2011	2/24/2011	3.935	18.94	34.73
2/1/2011	2/25/2011	4.015	21.8	33.74
2/1/2011	2/26/2011	3.93	21.8	33.74
2/1/2011	2/27/2011	3.93	20.03	
2/1/2011	2/28/2011	3.93	20.03	30.92
3/1/2011	3/1/2011	3.86	19.58	31.78
3/1/2011	3/2/2011	3.87	18.1	28.37
3/1/2011	3/3/2011	3.795	15.76	25.55
3/1/2011	3/4/2011	3.75	10.11	17.48
3/1/2011	3/5/2011	3.715	10.11	17.48
3/1/2011	3/6/2011	3.715	15.65	
3/1/2011	3/7/2011	3.715	15.65	24.08
3/1/2011	3/8/2011	3.725	14.57	18.46
3/1/2011	3/9/2011	3.75	14.57	18.63
3/1/2011	3/10/2011	3.74	5.33	8.02
3/1/2011	3/11/2011	3.725	3.83	8.59
3/1/2011	3/12/2011	3.62	3.83	8.59
3/1/2011	3/13/2011	3.62	8.92	
3/1/2011	3/14/2011	3.62	8.92	16.11
3/1/2011	3/15/2011	3.815	13.54	21.21
3/1/2011	3/16/2011	3.665	14.18	19.58
3/1/2011	3/17/2011	3.78	16.08	24.9
3/1/2011	3/18/2011	3.815	19.26	22.39
3/1/2011	3/19/2011	3.905	19.26	22.39
3/1/2011	3/20/2011	3.905	25.79	
3/1/2011	3/21/2011	3.905	25.79	28.94
3/1/2011	3/22/2011	3.97	14.29	26.62
3/1/2011	3/23/2011	4.075	7.26	26.02
3/1/2011	3/24/2011	4.135	4.63	25.36
3/1/2011	3/25/2011	4.19	2.2	19.02
3/1/2011	3/26/2011	4.105	2.2	19.02
3/1/2011	3/27/2011	4.105	6.61	
3/1/2011	3/28/2011	4.105	6.61	24.13
3/1/2011	3/29/2011	4.25	8.52	27.35
3/1/2011	3/30/2011	4.115	1.53	16.82
3/1/2011	3/31/2011	4.09	-0.51	4.92
4/1/2011	4/1/2011	4.085	0.57	11.35
4/1/2011	4/2/2011	4.06	0.57	11.35
4/1/2011	4/3/2011	4.06	12.76	
4/1/2011	4/4/2011	4.06	12.76	28
4/1/2011	4/5/2011	4.07	0.07	18.67
4/1/2011	4/6/2011	4.175	-0.22	28.1
4/1/2011	4/7/2011	4.125	0.26	35
4/1/2011	4/8/2011	4.095	-0.89	31.3
4/1/2011	4/9/2011	3.955	-0.89	31.3
4/1/2011	4/10/2011	3.955	9.05	
4/1/2011	4/11/2011	3.955	9.05	30.11
4/1/2011	4/12/2011	3.98	1.41	35.81
4/1/2011	4/13/2011	4.025	2.27	34.19
4/1/2011	4/14/2011	4.03	3.65	33.83
4/1/2011	4/15/2011	3.965	8.69	30.92
4/1/2011	4/16/2011	4.025	8.69	30.92
4/1/2011	4/17/2011	4.025	22.32	
4/1/2011	4/18/2011	4.025	22.32	35.18
4/1/2011	4/19/2011	4.125	20.34	35.58
4/1/2011	4/20/2011	4.145	19.08	34.1
4/1/2011	4/21/2011	4.16	19.08	34.1
4/1/2011	4/22/2011	4.115	16.09	30.94
4/1/2011	4/23/2011	4.115	16.09	30.94
4/1/2011	4/24/2011	4.115	11.5	
4/1/2011	4/25/2011	4.115	11.5	25.07
4/1/2011	4/26/2011	4.145	1.68	22.6

4/1/2011	4/27/2011	4.175	8.33	33
4/1/2011	4/28/2011	4.24	10.69	32.87
4/1/2011	4/29/2011	4.27	10.15	28.72
4/1/2011	4/30/2011	4.27	10.15	28.72
5/1/2011	5/1/2011	4.35	19.29	
5/1/2011	5/2/2011	4.35	19.29	33.8
5/1/2011	5/3/2011	4.495	17.49	36.89
5/1/2011	5/4/2011	4.585	28.54	41.97
5/1/2011	5/5/2011	4.47	22.05	33.54
5/1/2011	5/6/2011	4.305	15.61	23.63
5/1/2011	5/7/2011	4.035	15.61	23.63
5/1/2011	5/8/2011	4.035	15.79	
5/1/2011	5/9/2011	4.035	15.79	30.89
5/1/2011	5/10/2011	4.12	4.77	28.14
5/1/2011	5/11/2011	3.98	-0.93	25.77
5/1/2011	5/12/2011	4.025	-1.19	25.93
5/1/2011	5/13/2011	3.93	-0.67	22.68
5/1/2011	5/14/2011	3.955	-0.67	22.68
5/1/2011	5/15/2011	3.955	1.86	
5/1/2011	5/16/2011	3.955	1.86	19.04
5/1/2011	5/17/2011	4.135	-1.35	22.09
5/1/2011	5/18/2011	4.145	-1.5	24.97
5/1/2011	5/19/2011	4.065	-1.53	22.69
5/1/2011	5/20/2011	4.01	-2.37	15.39
5/1/2011	5/21/2011	3.965	-2.37	15.39
5/1/2011	5/22/2011	3.865	-1.97	
5/1/2011	5/23/2011	3.865	-1.97	23.51
5/1/2011	5/24/2011	4.085	-4.19	22.16
5/1/2011	5/25/2011	4.165	-4.28	25.29
5/1/2011	5/26/2011	4.165	-4.28	25.29
5/1/2011	5/27/2011	4.135	-2.86	21.06
5/1/2011	5/28/2011	4.16	-2.86	21.06
5/1/2011	5/29/2011	4.16	-2.02	
5/1/2011	5/30/2011	4.16	-2.02	
5/1/2011	5/31/2011	4.16	-4.44	25.41
6/1/2011	6/1/2011	4.425	-4.27	26.3
6/1/2011	6/2/2011	4.44	-6.05	22.82
6/1/2011	6/3/2011	4.455	-5.92	19.62
6/1/2011	6/4/2011	4.5	-5.92	19.62
6/1/2011	6/5/2011	4.5	1.86	
6/1/2011	6/6/2011	4.5	1.86	27.21
6/1/2011	6/7/2011	4.59	-6.15	17.92
6/1/2011	6/8/2011	4.55	-3.59	23.51
6/1/2011	6/9/2011	4.545	-1.24	28.84
6/1/2011	6/10/2011	4.7	-2.15	22.45
6/1/2011	6/11/2011	4.53	-2.15	22.45
6/1/2011	6/12/2011	4.53	6.75	
6/1/2011	6/13/2011	4.53	6.75	30.87
6/1/2011	6/14/2011	4.55	-2.8	29.62
6/1/2011	6/15/2011	4.44	-2.43	25.82
6/1/2011	6/16/2011	4.44	-1.89	29.35
6/1/2011	6/17/2011	4.46	-3.08	19.87
6/1/2011	6/18/2011	4.265	-3.08	19.87
6/1/2011	6/19/2011	4.265	0.46	
6/1/2011	6/20/2011	4.265	0.46	29.49
6/1/2011	6/21/2011	4.235	-3.18	37.47
6/1/2011	6/22/2011	4.31	-5.4	34.71
6/1/2011	6/23/2011	4.31	-4.9	26.08
6/1/2011	6/24/2011	4.145	-6.89	17.36
6/1/2011	6/25/2011	4.025	-6.89	17.36
6/1/2011	6/26/2011	4.025	0.93	
6/1/2011	6/27/2011	4.025	0.93	28.92
6/1/2011	6/28/2011	4.15	-4.6	24.16
6/1/2011	6/29/2011	4.205	-5.39	18.93
6/1/2011	6/30/2011	4.24	-5.39	18.93
7/1/2011	7/1/2011	4.125	-1.25	23.55
7/1/2011	7/2/2011	4.1	-1.25	23.55
7/1/2011	7/3/2011	4.1	11.17	
7/1/2011	7/4/2011	4.1	11.17	
7/1/2011	7/5/2011	4.1	-0.18	37.89
7/1/2011	7/6/2011	4.32	-0.27	39.94
7/1/2011	7/7/2011	4.205	-0.49	30.46
7/1/2011	7/8/2011	4.135	-0.27	26.47
7/1/2011	7/9/2011	3.96	-0.27	26.47
7/1/2011	7/10/2011	3.96	7.72	16.79
7/1/2011	7/11/2011	3.96	7.72	30.18
7/1/2011	7/12/2011	4.14	-0.14	31.26
7/1/2011	7/13/2011	4.125	-1.06	27.83
7/1/2011	7/14/2011	4.13	-0.33	26.05
7/1/2011	7/15/2011	4.165	1.72	25.47
7/1/2011	7/16/2011	4.165	1.72	25.47
7/1/2011	7/17/2011	4.165	10.76	26.12
7/1/2011	7/18/2011	4.165	10.76	33.04
7/1/2011	7/19/2011	4.265	1.36	32.91
7/1/2011	7/20/2011	4.25	2.77	32.6
7/1/2011	7/21/2011	4.36	1.39	26.98
7/1/2011	7/22/2011	4.3	5.56	33.46
7/1/2011	7/23/2011	4.175	5.56	33.46
7/1/2011	7/24/2011	4.175	18.37	34.64
7/1/2011	7/25/2011	4.175	18.37	36.49
7/1/2011	7/26/2011	4.165	11.67	34.67
7/1/2011	7/27/2011	4.135	15.06	36.65
7/1/2011	7/28/2011	4.085	15.06	36.65
7/1/2011	7/29/2011	4.06	15.67	34.26
7/1/2011	7/30/2011	4.06	15.67	34.26
7/1/2011	7/31/2011	4.06	19.35	
8/1/2011	8/1/2011	3.9	18.74	39.54
8/1/2011	8/2/2011	3.95	11.57	36.02
8/1/2011	8/3/2011	3.99	16.48	38.73
8/1/2011	8/4/2011	3.97	16.22	38.41
8/1/2011	8/5/2011	3.965	15.33	33.33
8/1/2011	8/6/2011	3.825	15.33	33.33
8/1/2011	8/7/2011	3.825	17.48	
8/1/2011	8/8/2011	3.825	17.48	34.08
8/1/2011	8/9/2011	3.74	12.11	30.4
8/1/2011	8/10/2011	3.815	13.55	29.14
8/1/2011	8/11/2011	3.885	17.09	30.78
8/1/2011	8/12/2011	3.83	18.3	28.31
8/1/2011	8/13/2011	3.925	18.3	28.31
8/1/2011	8/14/2011	3.925	22.01	
8/1/2011	8/15/2011	3.925	22.01	31.83
8/1/2011	8/16/2011	3.835	19.78	34.01
8/1/2011	8/17/2011	3.85	18.91	33.79
8/1/2011	8/18/2011	3.84	19.74	34.49
8/1/2011	8/19/2011	3.87	21.96	31.84
8/1/2011	8/20/2011	3.86	21.96	31.84
8/1/2011	8/21/2011	3.86	24.93	
8/1/2011	8/22/2011	3.86	24.93	33.86
8/1/2011	8/23/2011	3.84	23.84	35.83
8/1/2011	8/24/2011	3.845	24.57	37.22
8/1/2011	8/25/2011	3.94	23.58	40.54
8/1/2011	8/26/2011	3.865	22.64	37.54
8/1/2011	8/27/2011	3.83	22.64	37.54
8/1/2011	8/28/2011	3.83	28.78	
8/1/2011	8/29/2011	3.83	28.78	35.13
8/1/2011	8/30/2011	3.815	21.97	32.65
8/1/2011	8/31/2011	3.78	20.73	31.91
9/1/2011	9/1/2011	3.935	23.42	33.36
9/1/2011	9/2/2011	4.07	25.96	35.05
9/1/2011	9/3/2011	3.96	26.96	35.05
9/1/2011	9/4/2011	3.96	33.44	
9/1/2011	9/5/2011	3.96	33.44	
9/1/2011	9/6/2011	3.96	33.44	43.53
9/1/2011	9/7/2011	3.78	24.5	40.65
9/1/2011	9/8/2011	3.82	24.71	38.46
9/1/2011	9/9/2011	3.885	26.89	34.9
9/1/2011	9/10/2011	3.8	26.89	34.9
9/1/2011	9/11/2011	3.8	29.37	
9/1/2011	9/12/2011	3.8	29.37	33.47
9/1/2011	9/13/2011	3.795	24.86	30.92
9/1/2011	9/14/2011	3.855	24.61	30.1
9/1/2011	9/15/2011	3.9	25.29	30.37
9/1/2011	9/16/2011	3.83	25.12	31.23
9/1/2011	9/17/2011	3.765	25.12	31.23
9/1/2011	9/18/2011	3.765	31.09	
9/1/2011	9/19/2011	3.765	31.09	33.96
9/1/2011	9/20/2011	3.73	27.9	35.05
9/1/2011	9/21/2011	3.805	28.62	35.47
9/1/2011	9/22/2011	3.785	28.64	35.09
9/1/2011	9/23/2011	3.725	28.32	32.51
9/1/2011	9/24/2011	3.695	28.32	32.51
9/1/2011	9/25/2011	3.695	28.36	
9/1/2011	9/26/2011	3.695	28.36	31.16
9/1/2011	9/27/2011	3.755	27.87	30.5
9/1/2011	9/28/2011	3.85	29.06	31.93
9/1/2011	9/29/2011	3.84	29.06	31.93
9/1/2011	9/30/2011	3.74	28.32	30.71
10/1/2011	10/1/2011	3.52	27.11	29.28
10/1/2011	10/2/2011	3.52	28.06	
10/1/2011	10/3/2011	3.52	28.06	29.93
10/1/2011	10/4/2011	3.43	25.92	28.22
10/1/2011	10/5/2011	3.435	24.63	26.73

10/1/2011	10/6/2011	3.475	24.29	25.58
10/1/2011	10/7/2011	3.32	22.76	23.76
10/1/2011	10/8/2011	2.98	22.76	23.76
10/1/2011	10/9/2011	2.98	23.79	24.66
10/1/2011	10/10/2011	2.98	23.79	24.66
10/1/2011	10/11/2011	3.13	22.73	23.36
10/1/2011	10/12/2011	3.185	23.75	24.23
10/1/2011	10/13/2011	3.335	24.53	25.03
10/1/2011	10/14/2011	3.26	24.44	25.25
10/1/2011	10/15/2011	3.32	24.44	25.25
10/1/2011	10/16/2011	3.32	24.39	25.86
10/1/2011	10/17/2011	3.32	24.39	25.86
10/1/2011	10/18/2011	3.515	26.56	27.44
10/1/2011	10/19/2011	3.48	26.44	27.21
10/1/2011	10/20/2011	3.49	23.85	27.44
10/1/2011	10/21/2011	3.45	21.57	25.36
10/1/2011	10/22/2011	3.345	21.57	25.36
10/1/2011	10/23/2011	3.345	24.78	
10/1/2011	10/24/2011	3.345	24.78	28.44
10/1/2011	10/25/2011	3.555	26.85	29.37
10/1/2011	10/26/2011	3.555	27.27	30.2
10/1/2011	10/27/2011	3.575	27.08	30.74
10/1/2011	10/28/2011	3.5	25.51	28.12
10/1/2011	10/29/2011	3.475	25.51	28.12
10/1/2011	10/30/2011	3.475	26.08	
10/1/2011	10/31/2011	3.475	26.08	29.13
11/1/2011	11/1/2011	3.575	26.52	31.32
11/1/2011	11/2/2011	3.495	27.3	33.23
11/1/2011	11/3/2011	3.61	27.92	36.24
11/1/2011	11/4/2011	3.65	29.39	36.24
11/1/2011	11/5/2011	3.65	29.39	36.24
11/1/2011	11/6/2011	3.65	31.72	
11/1/2011	11/7/2011	3.65	31.72	36.11
11/1/2011	11/8/2011	3.6	30	36.86
11/1/2011	11/9/2011	3.59	30.94	37.59
11/1/2011	11/10/2011	3.62	30.94	37.59
11/1/2011	11/11/2011	3.6	26.96	33.95
11/1/2011	11/12/2011	3.49	26.96	33.95
11/1/2011	11/13/2011	3.49	27.43	
11/1/2011	11/14/2011	3.49	27.43	33.25
11/1/2011	11/15/2011	3.325	24.85	31.83
11/1/2011	11/16/2011	3.45	27.75	33.19
11/1/2011	11/17/2011	3.475	24.66	31.49
11/1/2011	11/18/2011	3.5	32.47	40.67
11/1/2011	11/19/2011	3.52	32.47	40.67
11/1/2011	11/20/2011	3.52	33.86	
11/1/2011	11/21/2011	3.52	33.86	36.05
11/1/2011	11/22/2011	3.325	24.61	27.9
11/1/2011	11/23/2011	3.385	24.61	27.9
11/1/2011	11/24/2011	3.005	24.15	
11/1/2011	11/25/2011	3.005	24.15	27.01
11/1/2011	11/26/2011	3.005	24.15	27.01
11/1/2011	11/27/2011	3.005	23.69	
11/1/2011	11/28/2011	3.005	23.69	29.14
11/1/2011	11/29/2011	3.35	25.33	29.83
11/1/2011	11/30/2011	3.48	25.53	30.36
12/1/2011	12/1/2011	3.55	28.36	33.43
12/1/2011	12/2/2011	3.49	28.03	33.03
12/1/2011	12/3/2011	3.515	28.03	33.03
12/1/2011	12/4/2011	3.515	29.7	
12/1/2011	12/5/2011	3.515	29.7	33.07
12/1/2011	12/6/2011	3.63	32.16	35.7
12/1/2011	12/7/2011	3.57	34	37.58
12/1/2011	12/8/2011	3.62	35.51	38.51
12/1/2011	12/9/2011	3.505	34.34	36.01
12/1/2011	12/10/2011	3.455	34.34	36.01
12/1/2011	12/11/2011	3.455	31.63	
12/1/2011	12/12/2011	3.455	31.63	35.05
12/1/2011	12/13/2011	3.555	34.85	37.06
12/1/2011	12/14/2011	3.545	34.63	37.69
12/1/2011	12/15/2011	3.495	33.16	35.28
12/1/2011	12/16/2011	3.46	30.34	31.77
12/1/2011	12/17/2011	3.365	30.34	31.77
12/1/2011	12/18/2011	3.365	28.38	
12/1/2011	12/19/2011	3.365	28.38	30.92
12/1/2011	12/20/2011	3.22	25.83	27.09
12/1/2011	12/21/2011	3.235	28.46	30.39
12/1/2011	12/22/2011	3.255	28.46	30.39
12/1/2011	12/23/2011	3.31	28.06	27.47
12/1/2011	12/24/2011	3.09	28.06	27.47
12/1/2011	12/25/2011	3.09	25.46	
12/1/2011	12/26/2011	3.09	25.46	
12/1/2011	12/27/2011	3.09	25.46	27.3
12/1/2011	12/28/2011	3.195	24.02	27.28
12/1/2011	12/29/2011	3.175	24.02	27.28
12/1/2011	12/30/2011	3.065	24.44	26.92
12/1/2011	12/31/2011	3.065	24.44	26.92
1/1/2012	1/1/2012	2.98	26.77	
1/1/2012	1/2/2012	2.98	26.77	
1/1/2012	1/3/2012	2.98	24.29	27.12
1/1/2012	1/4/2012	2.93	23.18	25.82
1/1/2012	1/5/2012	2.935	20.69	24.55
1/1/2012	1/6/2012	2.925	23.76	26.09
1/1/2012	1/7/2012	2.91	23.76	26.09
1/1/2012	1/8/2012	2.91	25.22	
1/1/2012	1/9/2012	2.91	25.22	26.29
1/1/2012	1/10/2012	3.04	24.81	27.92
1/1/2012	1/11/2012	3.105	26.12	28.76
1/1/2012	1/12/2012	2.96	26.6	28.38
1/1/2012	1/13/2012	2.88	26.6	28.38
1/1/2012	1/14/2012	2.83	24.61	25.51
1/1/2012	1/15/2012	2.83	24.61	
1/1/2012	1/16/2012	2.83	26.14	28.09
1/1/2012	1/17/2012	2.83	26.14	28.09
1/1/2012	1/18/2012	2.755	24.69	27.36
1/1/2012	1/19/2012	2.625	26.49	27.54
1/1/2012	1/20/2012	2.545	22.81	24.84
1/1/2012	1/21/2012	2.49	22.81	24.84
1/1/2012	1/22/2012	2.49	21.43	
1/1/2012	1/23/2012	2.49	21.43	23.53
1/1/2012	1/24/2012	2.605	20.28	24.57
1/1/2012	1/25/2012	2.705	19.98	23.22
1/1/2012	1/26/2012	2.73	20.86	23.98
1/1/2012	1/27/2012	2.75	23.84	25.25
1/1/2012	1/28/2012	2.59	23.84	25.25
1/1/2012	1/29/2012	2.59	22.62	
1/1/2012	1/30/2012	2.59	22.62	24.03
1/1/2012	1/31/2012	2.705	21.5	24.09
2/1/2012	2/1/2012	2.53	21.04	23.56
2/1/2012	2/2/2012	2.45	22.15	24.94
2/1/2012	2/3/2012	2.455	22.4	24.19
2/1/2012	2/4/2012	2.54	22.4	24.19
2/1/2012	2/5/2012	2.54	22.82	
2/1/2012	2/6/2012	2.54	22.92	24.88
2/1/2012	2/7/2012	2.635	21.36	24.34
2/1/2012	2/8/2012	2.72	22.37	25.39
2/1/2012	2/9/2012	2.565	22.39	24.88
2/1/2012	2/10/2012	2.54	20.97	23.51
2/1/2012	2/11/2012	2.535	20.97	23.51
2/1/2012	2/12/2012	2.535	22.9	
2/1/2012	2/13/2012	2.535	22.9	24.91
2/1/2012	2/14/2012	2.54	21.7	24.09
2/1/2012	2/15/2012	2.565	21.71	23.64
2/1/2012	2/16/2012	2.555	22.11	24.2
2/1/2012	2/17/2012	2.505	22.11	24.2
2/1/2012	2/18/2012	2.66	20.67	22.18
2/1/2012	2/19/2012	2.66	21.08	
2/1/2012	2/20/2012	2.66	21.77	24.7
2/1/2012	2/21/2012	2.66	21.77	24.7
2/1/2012	2/22/2012	2.57	19.88	23.22
2/1/2012	2/23/2012	2.6	20.91	24
2/1/2012	2/24/2012	2.67	21.79	23.91
2/1/2012	2/25/2012	2.57	21.79	23.91
2/1/2012	2/26/2012	2.57	24.97	
2/1/2012	2/27/2012	2.57	24.97	27.45
2/1/2012	2/28/2012	2.575	25.68	28.3
2/1/2012	2/29/2012	2.415	21.99	25.1
3/1/2012	3/1/2012	2.405	21.17	24.02
3/1/2012	3/2/2012	2.41	19.76	21.57
3/1/2012	3/3/2012	2.25	19.76	21.57
3/1/2012	3/4/2012	2.25	20.04	22.06
3/1/2012	3/5/2012	2.25	20.04	22.06
3/1/2012	3/6/2012	2.27	19.07	22.62
3/1/2012	3/7/2012	2.27	19.07	22.62
3/1/2012	3/8/2012	2.165	16.04	20.24
3/1/2012	3/9/2012	2.125	14.48	17.9
3/1/2012	3/10/2012	2.085	14.48	17.9
3/1/2012	3/11/2012	2.085	15.96	
3/1/2012	3/12/2012	2.085	15.96	18.13
3/1/2012	3/13/2012	2.055	16.21	18.41
3/1/2012	3/14/2012	2.055	17.53	19.84
3/1/2012	3/15/2012	2.005	16.26	17.7

3/1/2012	3/16/2012	2.125	15.13	17.29
3/1/2012	3/17/2012	2.115	15.13	17.29
3/1/2012	3/18/2012	2.115	16.06	19.18
3/1/2012	3/19/2012	2.115	16.06	19.18
3/1/2012	3/20/2012	2.215	16.3	18.25
3/1/2012	3/21/2012	2.215	15.83	16.65
3/1/2012	3/22/2012	2.2	12.52	18.43
3/1/2012	3/23/2012	2.2	9.87	17.62
3/1/2012	3/24/2012	2.055	9.87	17.62
3/1/2012	3/25/2012	2.055	8.46	
3/1/2012	3/26/2012	2.055	8.46	17.14
3/1/2012	3/27/2012	2.04	1.32	17.34
3/1/2012	3/28/2012	1.905	0.8	17.16
3/1/2012	3/29/2012	1.87	0.13	15.28
3/1/2012	3/30/2012	1.87	-0.04	11.76
3/1/2012	3/31/2012	1.87	-0.04	11.76
4/1/2012	4/1/2012	1.925	2.26	
4/1/2012	4/2/2012	1.925	2.26	16.32
4/1/2012	4/3/2012	1.895	1.85	17.56
4/1/2012	4/4/2012	2.005	6.07	18.36
4/1/2012	4/5/2012	2.08	6.07	18.36
4/1/2012	4/6/2012	2.005	5.5	17.9
4/1/2012	4/7/2012	2.005	5.5	17.9
4/1/2012	4/8/2012	2.005	7.76	
4/1/2012	4/9/2012	2.005	7.76	18.25
4/1/2012	4/10/2012	1.97	1.95	17.02
4/1/2012	4/11/2012	1.905	0.03	14.79
4/1/2012	4/12/2012	1.86	0	15.03
4/1/2012	4/13/2012	1.81	-0.02	12.38
4/1/2012	4/14/2012	1.76	-0.02	12.38
4/1/2012	4/15/2012	1.76	3.75	
4/1/2012	4/16/2012	1.76	3.75	15.01
4/1/2012	4/17/2012	1.755	0.11	15.68
4/1/2012	4/18/2012	1.81	0.38	15.19
4/1/2012	4/19/2012	1.825	2.95	18.04
4/1/2012	4/20/2012	1.79	0.6	13.27
4/1/2012	4/21/2012	1.715	0.6	13.27
4/1/2012	4/22/2012	1.715	2.69	
4/1/2012	4/23/2012	1.715	2.69	16.3
4/1/2012	4/24/2012	1.79	-0.31	15.4
4/1/2012	4/25/2012	1.88	-0.04	16.4
4/1/2012	4/26/2012	1.845	0.03	12.81
4/1/2012	4/27/2012	1.84	0	9.38
4/1/2012	4/28/2012	1.875	0	9.38
4/1/2012	4/29/2012	1.875	-0.04	
4/1/2012	4/30/2012	1.875	-0.04	8.43
5/1/2012	5/1/2012	1.93	-2.22	6.16
5/1/2012	5/2/2012	2.09	-1.51	8.01
5/1/2012	5/3/2012	2.11	-0.02	12.45
5/1/2012	5/4/2012	2.025	-1.24	5.12
5/1/2012	5/5/2012	2.07	-1.24	5.12
5/1/2012	5/6/2012	2.07	2.96	
5/1/2012	5/7/2012	2.07	2.96	14.36
5/1/2012	5/8/2012	2.12	0.75	15.2
5/1/2012	5/9/2012	2.07	-0.63	9.9
5/1/2012	5/10/2012	2.14	0.16	17.04
5/1/2012	5/11/2012	2.185	0.12	13.79
5/1/2012	5/12/2012	2.185	0.12	13.79
5/1/2012	5/13/2012	2.185	5.82	
5/1/2012	5/14/2012	2.185	5.82	20.3
5/1/2012	5/15/2012	2.24	-0.2	17.6
5/1/2012	5/16/2012	2.225	-0.75	13.73
5/1/2012	5/17/2012	2.345	-0.63	9.45
5/1/2012	5/18/2012	2.405	-1.15	8.01
5/1/2012	5/19/2012	2.39	-1.15	8.01
5/1/2012	5/20/2012	2.39	0.79	
5/1/2012	5/21/2012	2.39	0.79	11.39
5/1/2012	5/22/2012	2.4	-2.68	6.63
5/1/2012	5/23/2012	2.4	-4.47	3.97
5/1/2012	5/24/2012	2.4	-0.79	8.96
5/1/2012	5/25/2012	2.505	-0.79	8.96
5/1/2012	5/26/2012	2.31	-1.15	2.07
5/1/2012	5/27/2012	2.31	-1.15	
5/1/2012	5/28/2012	2.31	-0.55	
5/1/2012	5/29/2012	2.31	-0.55	9.98
5/1/2012	5/30/2012	2.305	0.3	13.83
5/1/2012	5/31/2012	2.215	2.11	13.97
6/1/2012	6/1/2012	2.175	1.96	10.71
6/1/2012	6/2/2012	2.06	1.96	10.71
6/1/2012	6/3/2012	2.06	8.55	
6/1/2012	6/4/2012	2.06	8.55	19.27
6/1/2012	6/5/2012	2.195	1.81	6.03
6/1/2012	6/6/2012	2.23	-0.23	4.6
6/1/2012	6/7/2012	2.18	-0.11	9.49
6/1/2012	6/8/2012	2.09	-2.65	0.47
6/1/2012	6/9/2012	1.98	-2.65	0.47
6/1/2012	6/10/2012	1.98	-0.69	
6/1/2012	6/11/2012	1.98	-0.69	13.16
6/1/2012	6/12/2012	2.005	-3.01	7.36
6/1/2012	6/13/2012	1.98	-0.27	1.5
6/1/2012	6/14/2012	1.97	-2.49	6.88
6/1/2012	6/15/2012	2.035	-0.24	12.21
6/1/2012	6/16/2012	2.15	-0.24	12.21
6/1/2012	6/17/2012	2.15	-5.29	2.24
6/1/2012	6/18/2012	2.235	-12.65	-4.16
6/1/2012	6/20/2012	2.325	-3.16	14.98
6/1/2012	6/21/2012	2.35	-0.5	17.93
6/1/2012	6/22/2012	2.22	-5.82	2.25
6/1/2012	6/23/2012	2.22	-5.82	2.25
6/1/2012	6/24/2012	2.22	-0.12	
6/1/2012	6/25/2012	2.22	-0.12	12.4
6/1/2012	6/26/2012	2.345	-4.28	0.54
6/1/2012	6/27/2012	2.355	0.36	20.29
6/1/2012	6/28/2012	2.61	-0.23	14.54
6/1/2012	6/29/2012	2.52	-0.04	13.47
6/1/2012	6/30/2012	2.52	-0.04	13.47
7/1/2012	7/1/2012	2.49	0.12	
7/1/2012	7/2/2012	2.49	0.12	18.62
7/1/2012	7/3/2012	2.45	-0.17	6.55
7/1/2012	7/4/2012	2.48	5.57	
7/1/2012	7/5/2012	2.48	5.57	21.03
7/1/2012	7/6/2012	2.59	1.49	21.51
7/1/2012	7/7/2012	2.6	1.49	21.51
7/1/2012	7/8/2012	2.6	8.56	
7/1/2012	7/9/2012	2.6	8.56	28.49
7/1/2012	7/10/2012	2.595	-0.77	26.21
7/1/2012	7/11/2012	2.635	0.72	28.26
7/1/2012	7/12/2012	2.555	0.6	31.37
7/1/2012	7/13/2012	2.615	-0.15	25.23
7/1/2012	7/14/2012	2.545	-0.15	25.23
7/1/2012	7/15/2012	2.545	1.05	
7/1/2012	7/16/2012	2.545	1.05	25.15
7/1/2012	7/17/2012	2.49	-0.02	22.97
7/1/2012	7/18/2012	2.34	-0.36	17.62
7/1/2012	7/19/2012	2.4	-0.01	22.32
7/1/2012	7/20/2012	2.58	-0.47	13.68
7/1/2012	7/21/2012	2.61	-0.47	13.68
7/1/2012	7/22/2012	2.61	-0.35	
7/1/2012	7/23/2012	2.61	-0.35	22.77
7/1/2012	7/24/2012	2.68	1.33	28.42
7/1/2012	7/25/2012	2.855	5.96	30.43
7/1/2012	7/26/2012	2.86	4.45	27.55
7/1/2012	7/27/2012	2.785	-0.83	12.7
7/1/2012	7/28/2012	2.665	-0.83	12.7
7/1/2012	7/29/2012	2.665	-0.51	
7/1/2012	7/30/2012	2.665	-0.51	26.22
7/1/2012	7/31/2012	2.81	1.25	24.64
8/1/2012	8/1/2012	2.89	4.37	25.75
8/1/2012	8/2/2012	2.915	4.33	24.76
8/1/2012	8/3/2012	2.835	13.25	28.97
8/1/2012	8/4/2012	2.65	13.25	28.97
8/1/2012	8/5/2012	2.65	20.13	
8/1/2012	8/6/2012	2.65	20.13	28.12
8/1/2012	8/7/2012	2.71	17.54	33.69
8/1/2012	8/8/2012	2.79	10.69	24.83
8/1/2012	8/9/2012	2.765	18.52	36.77
8/1/2012	8/10/2012	2.725	16.32	29.7
8/1/2012	8/11/2012	2.72	16.32	29.7
8/1/2012	8/12/2012	2.72	19.63	
8/1/2012	8/13/2012	2.72	19.63	28.5
8/1/2012	8/14/2012	2.595	17.77	33.09
8/1/2012	8/15/2012	2.595	18.96	48.07
8/1/2012	8/16/2012	2.655	19.73	84.16
8/1/2012	8/17/2012	2.63	18	43.49
8/1/2012	8/18/2012	2.49	18	43.49
8/1/2012	8/19/2012	2.49	19.29	
8/1/2012	8/20/2012	2.49	19.29	28.46
8/1/2012	8/21/2012	2.57	14.29	22.05
8/1/2012	8/22/2012	2.54	15.82	22.25
8/1/2012	8/23/2012	2.565	17.43	21.48
8/1/2012	8/24/2012	2.56	19.03	22.83

8/1/2012	8/25/2012	2.495	19.03	22.83
8/1/2012	8/26/2012	2.495	19.21	
8/1/2012	8/27/2012	2.495	19.21	24.72
8/1/2012	8/28/2012	2.545	17.97	24.35
8/1/2012	8/29/2012	2.535	17.35	23.84
8/1/2012	8/30/2012	2.565	17.22	25.19
8/1/2012	8/31/2012	2.595	17.22	25.19
9/1/2012	9/1/2012	2.535	21.49	23.13
9/1/2012	9/2/2012	2.535	21.49	
9/1/2012	9/3/2012	2.535	23.32	
9/1/2012	9/4/2012	2.535	23.32	28.31
9/1/2012	9/5/2012	2.66	20.34	27.86
9/1/2012	9/6/2012	2.675	20.4	29.84
9/1/2012	9/7/2012	2.655	21.59	26.11
9/1/2012	9/8/2012	2.495	21.59	26.11
9/1/2012	9/9/2012	2.495	20.19	
9/1/2012	9/10/2012	2.495	20.19	21.71
9/1/2012	9/11/2012	2.51	22.07	25
9/1/2012	9/12/2012	2.73	22.94	26.29
9/1/2012	9/13/2012	2.83	24.23	29.65
9/1/2012	9/14/2012	2.9	22.85	25.66
9/1/2012	9/15/2012	2.785	22.85	25.66
9/1/2012	9/16/2012	2.785	25.73	
9/1/2012	9/17/2012	2.785	25.73	26.53
9/1/2012	9/18/2012	2.705	25.08	26.53
9/1/2012	9/19/2012	2.755	25.13	26.15
9/1/2012	9/20/2012	2.755	24.82	25.51
9/1/2012	9/21/2012	2.745	22.75	23.74
9/1/2012	9/22/2012	2.67	22.75	23.74
9/1/2012	9/23/2012	2.67	23.79	24.69
9/1/2012	9/24/2012	2.67	23.79	24.69
9/1/2012	9/25/2012	2.705	22.23	23.32
9/1/2012	9/26/2012	2.77	24.41	25.42
9/1/2012	9/27/2012	2.83	24.57	25.63
9/1/2012	9/28/2012	2.875	24.57	25.63
9/1/2012	9/29/2012	2.875	25.6	25.31
9/1/2012	9/30/2012	2.875	25.6	
10/1/2012	10/1/2012	2.815	25.74	30.9
10/1/2012	10/2/2012	3.07	22.38	26.09
10/1/2012	10/3/2012	3.08	23.12	26.09
10/1/2012	10/4/2012	3.175	25.75	28.49
10/1/2012	10/5/2012	3.265	26.98	28.88
10/1/2012	10/6/2012	3.2	26.98	28.88
10/1/2012	10/7/2012	3.2	28.51	
10/1/2012	10/8/2012	3.2	28.51	30.56
10/1/2012	10/9/2012	3.11	28.06	31.2
10/1/2012	10/10/2012	3.215	28.44	31.56
10/1/2012	10/11/2012	3.32	28.77	32.2
10/1/2012	10/12/2012	3.465	26.72	29.96
10/1/2012	10/13/2012	3.47	26.72	29.96
10/1/2012	10/14/2012	3.47	30.15	
10/1/2012	10/15/2012	3.47	30.15	34.87
10/1/2012	10/16/2012	3.35	25.62	31.67
10/1/2012	10/17/2012	3.335	28.18	39.79
10/1/2012	10/18/2012	3.37	30.88	43.4
10/1/2012	10/19/2012	3.44	26.11	32.62
10/1/2012	10/20/2012	3.545	26.11	32.62
10/1/2012	10/21/2012	3.545	29.87	
10/1/2012	10/22/2012	3.545	29.87	39.84
10/1/2012	10/23/2012	3.576	27.97	36.63
10/1/2012	10/24/2012	3.48	27.79	34.87
10/1/2012	10/25/2012	3.61	28.37	33.92
10/1/2012	10/26/2012	3.67	28.9	33.26
10/1/2012	10/27/2012	3.48	28.9	33.26
10/1/2012	10/28/2012	3.48	29.31	
10/1/2012	10/29/2012	3.48	29.31	32.92
10/1/2012	10/30/2012	3.505	26.05	33.38
10/1/2012	10/31/2012	3.565	24.42	31.22
11/1/2012	11/1/2012	3.495	24.58	29.65
11/1/2012	11/2/2012	3.495	24.54	29.92
11/1/2012	11/3/2012	3.23	24.54	29.92
11/1/2012	11/4/2012	3.23	25.93	
11/1/2012	11/5/2012	3.23	25.93	27.91
11/1/2012	11/6/2012	3.27	23.6	25.3
11/1/2012	11/7/2012	3.365	24.1	27.48
11/1/2012	11/8/2012	3.62	27.18	31.39
11/1/2012	11/9/2012	3.565	27.18	31.39
11/1/2012	11/10/2012	3.455	28.67	29.75
11/1/2012	11/11/2012	3.455	28.67	
11/1/2012	11/12/2012	3.455	27.33	29.78
11/1/2012	11/13/2012	3.54	27.33	29.78
11/1/2012	11/14/2012	3.69	27.7	30.03
11/1/2012	11/15/2012	3.735	28.79	30.56
11/1/2012	11/16/2012	3.69	27.67	28.45
11/1/2012	11/17/2012	3.525	27.67	28.45
11/1/2012	11/18/2012	3.525	26.25	
11/1/2012	11/19/2012	3.525	26.25	27.18
11/1/2012	11/20/2012	3.635	23.03	24.79
11/1/2012	11/21/2012	3.58	23.03	24.79
11/1/2012	11/22/2012	3.575	27.53	
11/1/2012	11/23/2012	3.575	27.53	27.69
11/1/2012	11/24/2012	3.575	27.8	29.6
11/1/2012	11/25/2012	3.575	27.8	
11/1/2012	11/26/2012	3.575	27.8	29.6
11/1/2012	11/27/2012	3.755	27.06	30.92
11/1/2012	11/28/2012	3.625	26.62	30.5
11/1/2012	11/29/2012	3.76	26.23	28.67
11/1/2012	11/30/2012	3.63	26.23	28.67
12/1/2012	12/1/2012	2.42	21.77	25.37
12/1/2012	12/2/2012	2.42	21.77	
12/1/2012	12/3/2012	2.42	21.77	27.92
12/1/2012	12/4/2012	3.44	21	27.75
12/1/2012	12/5/2012	3.375	20.31	27.63
12/1/2012	12/6/2012	3.555	19.13	26.96
12/1/2012	12/7/2012	3.55	14.71	22.44
12/1/2012	12/8/2012	3.525	14.71	22.44
12/1/2012	12/9/2012	3.525	18.39	
12/1/2012	12/10/2012	3.525	18.39	23.45
12/1/2012	12/11/2012	3.405	16.14	22.43
12/1/2012	12/12/2012	3.41	15.62	23.84
12/1/2012	12/13/2012	3.355	19.21	26.88
12/1/2012	12/14/2012	3.285	21.6	27.11
12/1/2012	12/15/2012	3.2	21.6	27.11
12/1/2012	12/16/2012	3.2	22.35	
12/1/2012	12/17/2012	3.2	22.35	24.43
12/1/2012	12/18/2012	3.34	20.28	27.38
12/1/2012	12/19/2012	3.45	23.92	29.47
12/1/2012	12/20/2012	3.34	23.44	27.92
12/1/2012	12/21/2012	3.455	23.44	27.92
12/1/2012	12/22/2012	3.535	25.59	26.34
12/1/2012	12/23/2012	3.535	25.59	
12/1/2012	12/24/2012	3.535	26.19	27.16
12/1/2012	12/25/2012	3.43	26.19	
12/1/2012	12/26/2012	3.43	26.19	27.16
12/1/2012	12/27/2012	3.435	25.53	27.07
12/1/2012	12/28/2012	3.415	25.28	25.89
12/1/2012	12/29/2012	3.425	25.28	25.89
12/1/2012	12/30/2012	3.425	25.63	
12/1/2012	12/31/2012	3.425	25.63	26.3
1/1/2013	1/1/2013	3.51	26.79	
1/1/2013	1/2/2013	3.51	26.79	28.57
1/1/2013	1/3/2013	3.375	27.3	30.7
1/1/2013	1/4/2013	3.285	24.42	26.95
1/1/2013	1/5/2013	3.29	24.42	26.95
1/1/2013	1/6/2013	3.29	23.94	
1/1/2013	1/7/2013	3.29	23.94	25.84
1/1/2013	1/8/2013	3.41	19.23	24.89
1/1/2013	1/9/2013	3.315	19.64	24.75
1/1/2013	1/10/2013	3.265	21.64	27.91
1/1/2013	1/11/2013	3.32	24.74	29.27
1/1/2013	1/12/2013	3.46	24.74	29.27
1/1/2013	1/13/2013	3.46	29.02	
1/1/2013	1/14/2013	3.46	29.02	32.98
1/1/2013	1/15/2013	3.59	28.08	36.28
1/1/2013	1/16/2013	3.555	28.23	34.99
1/1/2013	1/17/2013	3.57	26.91	31.56
1/1/2013	1/18/2013	3.53	26.91	31.56
1/1/2013	1/19/2013	3.62	26.5	27.78
1/1/2013	1/20/2013	3.62	26.5	
1/1/2013	1/21/2013	3.62	26.64	29.12
1/1/2013	1/22/2013	3.62	25.64	29.12
1/1/2013	1/23/2013	3.67	27.43	34.07
1/1/2013	1/24/2013	3.605	25.25	30.14
1/1/2013	1/25/2013	3.625	25.61	28.24
1/1/2013	1/26/2013	3.49	25.61	28.24
1/1/2013	1/27/2013	3.49	26.9	
1/1/2013	1/28/2013	3.49	26.9	27.44
1/1/2013	1/29/2013	3.375	22.34	25.48
1/1/2013	1/30/2013	3.265	21.33	24.51
1/1/2013	1/31/2013	3.305	23.6	26.15
2/1/2013	2/1/2013	3.38	26.97	27.9
2/1/2013	2/2/2013	3.395	26.97	27.9

2/1/2013	2/3/2013	3.395	29.01	
2/1/2013	2/4/2013	3.395	29.01	30.03
2/1/2013	2/5/2013	3.33	26.69	28.12
2/1/2013	2/6/2013	3.415	26.13	27.78
2/1/2013	2/7/2013	3.515	26.54	27.71
2/1/2013	2/8/2013	3.455	26.86	27.66
2/1/2013	2/9/2013	3.41	26.86	27.66
2/1/2013	2/10/2013	3.41	28.91	
2/1/2013	2/11/2013	3.41	28.91	29.66
2/1/2013	2/12/2013	3.305	24.11	26.1
2/1/2013	2/13/2013	3.325	24.06	25.56
2/1/2013	2/14/2013	3.35	27.1	28.92
2/1/2013	2/15/2013	3.32	27.1	28.92
2/1/2013	2/16/2013	3.25	24.46	24.05
2/1/2013	2/17/2013	3.25	24.46	
2/1/2013	2/18/2013	3.25	27.47	29.09
2/1/2013	2/19/2013	3.25	27.47	29.09
2/1/2013	2/20/2013	3.395	27.07	28.26
2/1/2013	2/21/2013	3.45	27.61	28.49
2/1/2013	2/22/2013	3.35	25.97	26.44
2/1/2013	2/23/2013	3.365	25.97	26.44
2/1/2013	2/24/2013	3.365	31.89	
2/1/2013	2/25/2013	3.365	31.89	31.86
2/1/2013	2/26/2013	3.515	33.44	34.74
2/1/2013	2/27/2013	3.525	34.98	35.57
2/1/2013	2/28/2013	3.535	32.19	33.39
3/1/2013	3/1/2013	3.495	27.99	29.72
3/1/2013	3/2/2013	3.455	27.99	29.72
3/1/2013	3/3/2013	3.455	28.98	
3/1/2013	3/4/2013	3.455	28.98	33.49
3/1/2013	3/5/2013	3.51	31.83	34.87
3/1/2013	3/6/2013	3.6	33.36	34.98
3/1/2013	3/7/2013	3.54	32.07	34.88
3/1/2013	3/8/2013	3.53	30.85	32.35
3/1/2013	3/9/2013	3.555	30.85	32.35
3/1/2013	3/10/2013	3.555	30.65	
3/1/2013	3/11/2013	3.555	30.65	31.47
3/1/2013	3/12/2013	3.545	27.98	29.94
3/1/2013	3/13/2013	3.585	26.62	29.72
3/1/2013	3/14/2013	3.61	26.66	29.81
3/1/2013	3/15/2013	3.615	24.76	26.94
3/1/2013	3/16/2013	3.775	24.76	26.94
3/1/2013	3/17/2013	3.775	27.8	
3/1/2013	3/18/2013	3.775	27.8	32.7
3/1/2013	3/19/2013	3.89	32.91	35.17
3/1/2013	3/20/2013	3.89	30.77	32.06
3/1/2013	3/21/2013	3.91	28.16	30.43
3/1/2013	3/22/2013	4.005	31.06	34
3/1/2013	3/23/2013	4.04	31.06	34
3/1/2013	3/24/2013	4.04	37.15	
3/1/2013	3/25/2013	4.04	37.75	38.6
3/1/2013	3/26/2013	4.04	37.75	38.97
3/1/2013	3/27/2013	3.89	33.13	37.07
3/1/2013	3/28/2013	3.915	33.13	37.07
3/1/2013	3/29/2013	3.915	27.98	29.93
3/1/2013	3/30/2013	3.915	27.98	29.93
3/1/2013	3/31/2013	3.915	27.98	
4/1/2013	4/1/2013	3.88	27.45	29.9
4/1/2013	4/2/2013	3.745	18.82	27.04
4/1/2013	4/3/2013	3.795	21.31	31.25
4/1/2013	4/4/2013	3.7	22.5	32.27
4/1/2013	4/5/2013	3.655	13.59	23.23
4/1/2013	4/6/2013	3.755	13.59	23.23
4/1/2013	4/7/2013	3.755	15.41	
4/1/2013	4/8/2013	3.755	15.41	28.34
4/1/2013	4/9/2013	3.965	23.25	33.89
4/1/2013	4/10/2013	3.89	8.41	25.57
4/1/2013	4/11/2013	3.92	2.46	26.19
4/1/2013	4/12/2013	3.935	1.23	25.96
4/1/2013	4/13/2013	4.005	1.23	25.96
4/1/2013	4/14/2013	4.005	20.75	38.95
4/1/2013	4/15/2013	4.005	20.75	38.95
4/1/2013	4/16/2013	4.09	24.14	40.47
4/1/2013	4/17/2013	4.075	24.72	41.59
4/1/2013	4/18/2013	4.05	12.95	31.74
4/1/2013	4/19/2013	3.99	12.55	24.16
4/1/2013	4/20/2013	4.12	12.55	24.16
4/1/2013	4/21/2013	4.12	28.07	
4/1/2013	4/22/2013	4.12	28.07	39.16
4/1/2013	4/23/2013	4.17	28.04	39.98
4/1/2013	4/24/2013	4.14	28.65	38.96
4/1/2013	4/25/2013	4.03	24	35.44
4/1/2013	4/26/2013	3.965	15.44	26.84
4/1/2013	4/27/2013	3.85	15.44	26.84
4/1/2013	4/28/2013	3.85	24.51	
4/1/2013	4/29/2013	3.85	24.51	31.5
4/1/2013	4/30/2013	4.04	24.2	35.64
5/1/2013	5/1/2013	4.125	29.09	39.56
5/1/2013	5/2/2013	4.14	29.73	40.52
5/1/2013	5/3/2013	4.02	26.56	34.4
5/1/2013	5/4/2013	3.705	26.56	34.4
5/1/2013	5/5/2013	3.705	29.75	
5/1/2013	5/6/2013	3.705	29.75	36.42
5/1/2013	5/7/2013	3.695	16.95	31.69
5/1/2013	5/8/2013	3.735	11.15	31.53
5/1/2013	5/9/2013	3.72	0.82	30.86
5/1/2013	5/10/2013	3.7	-0.05	31.96
5/1/2013	5/11/2013	3.71	-0.05	31.96
5/1/2013	5/12/2013	3.71	8.68	
5/1/2013	5/13/2013	3.71	8.68	35.1
5/1/2013	5/14/2013	3.76	1.87	38.87
5/1/2013	5/15/2013	3.79	1.91	37.39
5/1/2013	5/16/2013	3.83	0.84	35.65
5/1/2013	5/17/2013	3.8	-0.13	26.9
5/1/2013	5/18/2013	3.7	-0.13	26.9
5/1/2013	5/19/2013	3.7	6.47	
5/1/2013	5/20/2013	3.7	6.47	33.52
5/1/2013	5/21/2013	3.89	0.36	26.71
5/1/2013	5/22/2013	3.955	3.75	34.27
5/1/2013	5/23/2013	3.94	14.32	38.63
5/1/2013	5/24/2013	3.935	14.32	38.63
5/1/2013	5/25/2013	3.915	20.29	31.35
5/1/2013	5/26/2013	3.915	20.29	
5/1/2013	5/27/2013	3.915	18.02	32.92
5/1/2013	5/28/2013	3.915	18.02	32.92
5/1/2013	5/29/2013	3.925	7.67	35.27
5/1/2013	5/30/2013	3.925	11.92	34
5/1/2013	5/31/2013	3.885	11.92	34
6/1/2013	6/1/2013	3.79	19.19	33.94
6/1/2013	6/2/2013	3.79	24.99	
6/1/2013	6/3/2013	3.79	24.99	37.34
6/1/2013	6/4/2013	3.72	22.92	40.9
6/1/2013	6/5/2013	3.7	22.22	39.12
6/1/2013	6/6/2013	3.715	18.91	39.21
6/1/2013	6/7/2013	3.67	18	35.73
6/1/2013	6/8/2013	3.545	18	35.73
6/1/2013	6/9/2013	3.545	27.14	
6/1/2013	6/10/2013	3.545	27.14	38.93
6/1/2013	6/11/2013	3.58	17.01	31.98
6/1/2013	6/12/2013	3.545	16.89	31.06
6/1/2013	6/13/2013	3.51	14.44	29.21
6/1/2013	6/14/2013	3.47	19.63	31.88
6/1/2013	6/15/2013	3.505	19.63	31.88
6/1/2013	6/16/2013	3.505	24.81	
6/1/2013	6/17/2013	3.505	24.81	32.9
6/1/2013	6/18/2013	3.575	20.56	32.28
6/1/2013	6/19/2013	3.635	17.05	28.47
6/1/2013	6/20/2013	3.68	19.09	28.27
6/1/2013	6/21/2013	3.63	23.27	31.58
6/1/2013	6/22/2013	3.55	23.27	31.58
6/1/2013	6/23/2013	3.55	17.91	
6/1/2013	6/24/2013	3.55	17.91	29.53
6/1/2013	6/25/2013	3.525	10.55	30.48
6/1/2013	6/26/2013	3.52	15.79	32.7
6/1/2013	6/27/2013	3.48	15.63	35.37
6/1/2013	6/28/2013	3.515	15.63	35.37
6/1/2013	6/29/2013	3.515	24.53	35.97
6/1/2013	6/30/2013	3.515	24.53	
7/1/2013	7/1/2013	3.33	13.46	51.21
7/1/2013	7/2/2013	3.39	11.49	120.03
7/1/2013	7/3/2013	3.35	10.61	54.65
7/1/2013	7/4/2013	3.295	12.01	
7/1/2013	7/5/2013	3.295	12.01	32.83
7/1/2013	7/6/2013	3.22	11.08	39.52
7/1/2013	7/7/2013	3.22	11.08	
7/1/2013	7/8/2013	3.22	11.08	39.52
7/1/2013	7/9/2013	3.405	18.3	45.54
7/1/2013	7/10/2013	3.425	12.83	35.16
7/1/2013	7/11/2013	3.49	18.83	32.51
7/1/2013	7/12/2013	3.49	18.72	32.03
7/1/2013	7/13/2013	3.32	18.72	32.03
7/1/2013	7/14/2013	3.32	30.56	

7/1/2013	7/15/2013	3.32	30.56	48.24
7/1/2013	7/16/2013	3.445	25.23	55.94
7/1/2013	7/17/2013	3.39	19.69	59.15
7/1/2013	7/18/2013	3.38	24.32	47.03
7/1/2013	7/19/2013	3.445	22.84	38.44
7/1/2013	7/20/2013	3.65	22.84	38.44
7/1/2013	7/21/2013	3.65	28.25	
7/1/2013	7/22/2013	3.65	28.25	42.77
7/1/2013	7/23/2013	3.555	26.71	46.9
7/1/2013	7/24/2013	3.655	27.36	53.57
7/1/2013	7/25/2013	3.65	26.2	50.85
7/1/2013	7/26/2013	3.58	25.74	40.55
7/1/2013	7/27/2013	3.35	25.74	40.55
7/1/2013	7/28/2013	3.35	25.51	40.27
7/1/2013	7/30/2013	3.26	23.97	40.67
7/1/2013	7/31/2013	3.255	22.54	40.07
8/1/2013	8/1/2013	3.27	21.55	33.16
8/1/2013	8/2/2013	3.215	19.35	30.69
8/1/2013	8/3/2013	3.235	19.35	30.69
8/1/2013	8/4/2013	3.235	26.91	
8/1/2013	8/5/2013	3.235	26.91	41.63
8/1/2013	8/6/2013	3.215	23.56	41.75
8/1/2013	8/7/2013	3.25	23.69	38.76
8/1/2013	8/8/2013	3.215	25.37	36.73
8/1/2013	8/9/2013	3.025	24.41	30.52
8/1/2013	8/10/2013	3.045	24.41	30.52
8/1/2013	8/11/2013	3.045	27.44	
8/1/2013	8/12/2013	3.045	27.44	38.51
8/1/2013	8/13/2013	3.285	25.65	41.08
8/1/2013	8/14/2013	3.195	25	36.6
8/1/2013	8/15/2013	3.155	23.06	34.11
8/1/2013	8/16/2013	3.175	24.6	33.48
8/1/2013	8/17/2013	3.155	24.6	33.48
8/1/2013	8/18/2013	3.155	29.16	
8/1/2013	8/19/2013	3.155	29.16	41.53
8/1/2013	8/20/2013	3.335	26.26	45.65
8/1/2013	8/21/2013	3.385	26.74	53.21
8/1/2013	8/22/2013	3.405	26.6	48.82
8/1/2013	8/23/2013	3.35	25.44	34.39
8/1/2013	8/24/2013	3.32	25.44	34.39
8/1/2013	8/25/2013	3.32	26.63	
8/1/2013	8/26/2013	3.32	28.63	37.47
8/1/2013	8/27/2013	3.4	27.56	44.16
8/1/2013	8/28/2013	3.325	28.88	53.02
8/1/2013	8/29/2013	3.46	27.73	44.57
8/1/2013	8/30/2013	3.445	27.49	41.73
8/1/2013	8/31/2013	3.445	27.49	41.73
9/1/2013	9/1/2013	3.415	36.25	
9/1/2013	9/2/2013	3.415	36.25	
9/1/2013	9/3/2013	3.415	36.25	48.77
9/1/2013	9/4/2013	3.575	29.55	56.82
9/1/2013	9/5/2013	3.55	28.18	44.12
9/1/2013	9/6/2013	3.55	28.69	42.63
9/1/2013	9/7/2013	3.355	28.69	42.63
9/1/2013	9/8/2013	3.355	42.34	
9/1/2013	9/9/2013	3.355	42.34	69.47
9/1/2013	9/10/2013	3.53	32.34	63.46
9/1/2013	9/11/2013	3.53	32.13	50.16
9/1/2013	9/12/2013	3.425	29.69	42.9
9/1/2013	9/13/2013	3.33	28.52	39.09
9/1/2013	9/14/2013	3.36	28.52	39.09
9/1/2013	9/15/2013	3.36	29.01	
9/1/2013	9/16/2013	3.36	29.01	34.18
9/1/2013	9/17/2013	3.465	27.09	30.01
9/1/2013	9/18/2013	3.615	26.08	29.06
9/1/2013	9/19/2013	3.52	27.66	32.32
9/1/2013	9/20/2013	3.49	25.21	27.63
9/1/2013	9/21/2013	3.365	25.21	27.63
9/1/2013	9/22/2013	3.365	26.31	
9/1/2013	9/23/2013	3.365	26.31	27.21
9/1/2013	9/24/2013	3.37	25.8	27.8
9/1/2013	9/25/2013	3.295	26.66	28.82
9/1/2013	9/26/2013	3.22	27.07	29.61
9/1/2013	9/27/2013	3.2	25.49	27.02
9/1/2013	9/28/2013	3.18	25.49	27.02
9/1/2013	9/29/2013	3.18	23.84	
9/1/2013	9/30/2013	3.18	23.84	24.39
10/1/2013	10/1/2013	3.15	24.1	26.9
10/1/2013	10/2/2013	3.355	26.64	26.35
10/1/2013	10/3/2013	3.53	28	31.05
10/1/2013	10/4/2013	3.51	28.68	32.01
10/1/2013	10/5/2013	3.445	28.68	32.01
10/1/2013	10/6/2013	3.445	30.37	
10/1/2013	10/7/2013	3.445	30.37	29.93
10/1/2013	10/8/2013	3.52	26.08	28.88
10/1/2013	10/9/2013	3.64	29.44	33.42
10/1/2013	10/10/2013	3.64	28.92	31.89
10/1/2013	10/11/2013	3.66	30.6	33.99
10/1/2013	10/12/2013	3.63	30.6	33.99
10/1/2013	10/13/2013	3.63	33.65	
10/1/2013	10/14/2013	3.63	33.65	36.6
10/1/2013	10/15/2013	3.775	29.63	36.64
10/1/2013	10/16/2013	3.9	29.94	36.77
10/1/2013	10/17/2013	3.895	29.52	40.67
10/1/2013	10/18/2013	3.755	29.47	39.99
10/1/2013	10/19/2013	3.705	29.47	39.99
10/1/2013	10/20/2013	3.705	34.13	
10/1/2013	10/21/2013	3.705	34.13	44.26
10/1/2013	10/22/2013	3.89	29.5	45.16
10/1/2013	10/23/2013	3.775	29.87	45.77
10/1/2013	10/24/2013	3.78	30.83	44.98
10/1/2013	10/25/2013	3.765	33.2	43.05
10/1/2013	10/26/2013	3.815	33.2	43.05
10/1/2013	10/27/2013	3.815	33.59	
10/1/2013	10/28/2013	3.815	33.59	36.9
10/1/2013	10/29/2013	3.73	34.41	43.37
10/1/2013	10/30/2013	3.725	34.88	38.86
10/1/2013	10/31/2013	3.665	30.26	36.64
11/1/2013	11/1/2013	3.625	28.76	36.06
11/1/2013	11/2/2013	3.445	28.76	36.06
11/1/2013	11/3/2013	3.445	27.24	
11/1/2013	11/4/2013	3.445	27.24	41.43
11/1/2013	11/5/2013	3.475	27.86	37.17
11/1/2013	11/6/2013	3.48	28.24	39.67
11/1/2013	11/7/2013	3.515	26.05	34.03
11/1/2013	11/8/2013	3.525	26.05	34.03
11/1/2013	11/9/2013	3.435	30.79	34.14
11/1/2013	11/10/2013	3.435	30.79	
11/1/2013	11/11/2013	3.435	28.14	37.06
11/1/2013	11/12/2013	3.595	29.14	37.06
11/1/2013	11/13/2013	3.615	26.65	36.79
11/1/2013	11/14/2013	3.645	26.68	34.23
11/1/2013	11/15/2013	3.4	25.22	28.68
11/1/2013	11/16/2013	3.545	25.22	28.68
11/1/2013	11/17/2013	3.545	29.41	
11/1/2013	11/18/2013	3.545	29.41	37.5
11/1/2013	11/19/2013	3.645	26.08	32.71
11/1/2013	11/20/2013	3.54	29.99	38.48
11/1/2013	11/21/2013	3.54	34.18	44.9
11/1/2013	11/22/2013	3.67	35.43	44.65
11/1/2013	11/23/2013	3.75	35.43	44.65
11/1/2013	11/24/2013	3.75	36.66	
11/1/2013	11/25/2013	3.75	36.66	41.66
11/1/2013	11/26/2013	3.91	33.15	40.58
11/1/2013	11/27/2013	3.805	33.15	40.58
11/1/2013	11/28/2013	3.805	34.97	
11/1/2013	11/29/2013	3.805	34.97	36.26
11/1/2013	11/30/2013	3.805	34.97	36.26
12/1/2013	12/1/2013	3.78	30.63	
12/1/2013	12/2/2013	3.78	30.63	43.45
12/1/2013	12/3/2013	3.935	28.49	48.66
12/1/2013	12/4/2013	4.115	41.38	69.96
12/1/2013	12/5/2013	4.25	45.94	84.36
12/1/2013	12/6/2013	4.455	57.99	70.79
12/1/2013	12/7/2013	5.825	57.99	70.79
12/1/2013	12/8/2013	5.825	85.41	
12/1/2013	12/9/2013	5.825	85.41	87.48
12/1/2013	12/10/2013	6.78	46.73	70.25
12/1/2013	12/11/2013	4.745	53.84	61.38
12/1/2013	12/12/2013	4.6	46.33	64.54
12/1/2013	12/13/2013	4.63	41.65	52.07
12/1/2013	12/14/2013	4.485	41.65	52.07
12/1/2013	12/15/2013	4.485	47.2	
12/1/2013	12/16/2013	4.485	47.2	57.01
12/1/2013	12/17/2013	4.295	36.24	45.87
12/1/2013	12/18/2013	4.27	33.54	39.98
12/1/2013	12/19/2013	4.36	43.49	62.72
12/1/2013	12/20/2013	4.385	34.75	44.97
12/1/2013	12/21/2013	4.395	34.75	44.97
12/1/2013	12/22/2013	4.395	36.85	
12/1/2013	12/23/2013	4.395	36.85	41.03

12/1/2013	12/24/2013	4.515	40.91	48.2
12/1/2013	12/25/2013	4.36	40.91	
12/1/2013	12/26/2013	4.36	40.91	48.2
12/1/2013	12/27/2013	4.345	37.04	43.59
12/1/2013	12/28/2013	4.335	37.04	43.59
12/1/2013	12/29/2013	4.335	42.08	
12/1/2013	12/30/2013	4.335	42.08	45.98
12/1/2013	12/31/2013	4.445	36.49	41.27
1/1/2014	1/1/2014	4.355	42.75	
1/1/2014	1/2/2014	4.355	42.75	45.04
1/1/2014	1/3/2014	4.385	39.64	42.76
1/1/2014	1/4/2014	4.52	39.64	42.76
1/1/2014	1/5/2014	4.52	48.31	
1/1/2014	1/6/2014	4.52	48.31	51.14
1/1/2014	1/7/2014	4.75	41.58	44.65
1/1/2014	1/8/2014	4.56	37.37	40.14
1/1/2014	1/9/2014	4.41	31.25	35.08
1/1/2014	1/10/2014	4.125	29.97	32.9
1/1/2014	1/11/2014	3.975	29.97	32.9
1/1/2014	1/12/2014	3.975	32.12	
1/1/2014	1/13/2014	3.975	32.12	34.45
1/1/2014	1/14/2014	4.225	37.07	41.18
1/1/2014	1/15/2014	4.335	38.62	40.54
1/1/2014	1/16/2014	4.38	38.07	40.51
1/1/2014	1/17/2014	4.52	38.07	40.51
1/1/2014	1/18/2014	4.395	37.61	38.24
1/1/2014	1/19/2014	4.395	37.61	
1/1/2014	1/20/2014	4.395	37.53	39.82
1/1/2014	1/21/2014	4.395	37.53	39.82
1/1/2014	1/22/2014	4.505	39.82	41.98
1/1/2014	1/23/2014	4.71	40.78	42.66
1/1/2014	1/24/2014	4.8	43.3	46.1
1/1/2014	1/25/2014	4.76	43.3	46.1
1/1/2014	1/26/2014	4.76	43.5	
1/1/2014	1/27/2014	4.76	43.5	45.31
1/1/2014	1/28/2014	4.865	43.22	44.86
1/1/2014	1/29/2014	4.805	37.16	38.64
1/1/2014	1/30/2014	5.035	35.91	38.68
1/1/2014	1/31/2014	5.27	35.91	38.68
2/1/2014	2/1/2014	5.165	48.06	49.52
2/1/2014	2/2/2014	5.165	55.23	
2/1/2014	2/3/2014	5.165	55.23	62.79
2/1/2014	2/4/2014	6.395	72.45	72
2/1/2014	2/5/2014	8.19	96.74	105.38
2/1/2014	2/6/2014	24.36	224.2	216.32
2/1/2014	2/7/2014	7.74	143.98	196.98
2/1/2014	2/8/2014	6.325	143.98	196.98
2/1/2014	2/9/2014	6.325	66.69	69.52
2/1/2014	2/10/2014	6.325	66.69	69.52
2/1/2014	2/11/2014	7.785	49.06	55.93
2/1/2014	2/12/2014	6.12	50.71	56.32
2/1/2014	2/13/2014	5.28	39	45.56
2/1/2014	2/14/2014	5.17	39	45.56
2/1/2014	2/15/2014	5.325	39.88	43.69
2/1/2014	2/16/2014	5.325	39.88	
2/1/2014	2/17/2014	5.325	38.63	46.81
2/1/2014	2/18/2014	5.325	38.63	46.81
2/1/2014	2/19/2014	5.26	35.94	41.64
2/1/2014	2/20/2014	5.635	35.78	40.72
2/1/2014	2/21/2014	6.43	43.98	47.58
2/1/2014	2/22/2014	7.605	43.98	47.58
2/1/2014	2/23/2014	7.605	62.06	
2/1/2014	2/24/2014	7.605	62.06	64.98
2/1/2014	2/25/2014	7.21	65.35	67.93
2/1/2014	2/26/2014	5.215	48.33	52.03
2/1/2014	2/27/2014	5.31	42.68	47.15
2/1/2014	2/28/2014	6.485	42.68	47.15
3/1/2014	3/1/2014	6.59	43.43	49.58
3/1/2014	3/2/2014	6.59	55.34	
3/1/2014	3/3/2014	6.59	55.34	56.59
3/1/2014	3/4/2014	8.075	45.41	55.44
3/1/2014	3/5/2014	6.805	45.29	57.01
3/1/2014	3/6/2014	5.145	24.41	33.99
3/1/2014	3/7/2014	4.795	25.2	35.82
3/1/2014	3/8/2014	4.54	25.2	35.82
3/1/2014	3/9/2014	4.54	17.04	28.64
3/1/2014	3/10/2014	4.54	17.04	28.64
3/1/2014	3/11/2014	4.425	15.64	30.28
3/1/2014	3/12/2014	4.485	19.14	31.17
3/1/2014	3/13/2014	4.45	7.54	26.43
3/1/2014	3/14/2014	4.28	0.41	15.71
3/1/2014	3/15/2014	4.215	0.41	15.71
3/1/2014	3/16/2014	4.215	2.94	
3/1/2014	3/17/2014	4.215	2.94	16.31
3/1/2014	3/18/2014	4.44	4.32	27.58
3/1/2014	3/19/2014	4.43	4.55	27.48
3/1/2014	3/20/2014	4.385	4.54	31.76
3/1/2014	3/21/2014	4.47	11.33	35.72
3/1/2014	3/22/2014	4.42	11.33	35.72
3/1/2014	3/23/2014	4.42	23.11	
3/1/2014	3/24/2014	4.42	23.11	34.34
3/1/2014	3/25/2014	4.46	16.1	33.66
3/1/2014	3/26/2014	4.835	12.88	30.1
3/1/2014	3/27/2014	4.61	6.31	18.02
3/1/2014	3/28/2014	4.42	2.5	16.2
3/1/2014	3/29/2014	4.44	2.5	16.2
3/1/2014	3/30/2014	4.44	11.63	
3/1/2014	3/31/2014	4.44	11.63	31.53
4/1/2014	4/1/2014	4.425	18.39	31.83
4/1/2014	4/2/2014	4.39	14.01	27.26
4/1/2014	4/3/2014	4.385	24.69	35.16
4/1/2014	4/4/2014	4.41	14.98	23.46
4/1/2014	4/5/2014	4.37	14.98	23.46
4/1/2014	4/6/2014	4.37	19.15	
4/1/2014	4/7/2014	4.37	19.15	32.68
4/1/2014	4/8/2014	4.315	19.25	28.91
4/1/2014	4/9/2014	4.34	15.89	27.27
4/1/2014	4/10/2014	4.43	25.55	35.45
4/1/2014	4/11/2014	4.465	28.06	31.43
4/1/2014	4/12/2014	4.52	28.06	31.43
4/1/2014	4/13/2014	4.52	24.32	
4/1/2014	4/14/2014	4.52	24.32	33.75
4/1/2014	4/15/2014	4.5	0.63	14.3
4/1/2014	4/16/2014	4.5	2.38	26.22
4/1/2014	4/17/2014	4.495	2.38	26.22
4/1/2014	4/18/2014	4.32	1.14	27.49
4/1/2014	4/19/2014	4.32	1.14	27.49
4/1/2014	4/20/2014	4.32	13.47	
4/1/2014	4/21/2014	4.32	13.47	35.34
4/1/2014	4/22/2014	4.55	3.87	28.33
4/1/2014	4/23/2014	4.535	19.3	38.55
4/1/2014	4/24/2014	4.605	22.21	34.99
4/1/2014	4/25/2014	4.75	22.28	32.75
4/1/2014	4/26/2014	4.535	22.28	32.75
4/1/2014	4/27/2014	4.535	22.82	
4/1/2014	4/28/2014	4.535	22.82	42.04
4/1/2014	4/29/2014	4.61	21.87	40.63
4/1/2014	4/30/2014	4.57	20.63	36.71
5/1/2014	5/1/2014	4.585	22.15	41.36
5/1/2014	5/2/2014	4.575	5.57	27.68
5/1/2014	5/3/2014	4.485	5.57	27.68
5/1/2014	5/4/2014	4.485	6.53	
5/1/2014	5/5/2014	4.485	6.53	32.99
5/1/2014	5/6/2014	4.55	1.39	35.69
5/1/2014	5/7/2014	4.545	2.42	31.5
5/1/2014	5/8/2014	4.515	7.14	29.42
5/1/2014	5/9/2014	4.435	-0.09	22.79
5/1/2014	5/10/2014	4.31	-0.09	22.79
5/1/2014	5/11/2014	4.31	23.18	
5/1/2014	5/12/2014	4.31	23.18	41.38
5/1/2014	5/13/2014	4.305	23.93	49.62
5/1/2014	5/14/2014	4.27	26.87	56.29
5/1/2014	5/15/2014	4.26	16.69	57.58
5/1/2014	5/16/2014	4.195	-0.48	24.94
5/1/2014	5/17/2014	4.225	-0.48	24.94
5/1/2014	5/18/2014	4.225	3.53	
5/1/2014	5/19/2014	4.225	3.53	35.29
5/1/2014	5/20/2014	4.25	1.05	38.78
5/1/2014	5/21/2014	4.26	0.39	36.67
5/1/2014	5/22/2014	4.315	0	33.84
5/1/2014	5/23/2014	4.27	0	33.84
5/1/2014	5/24/2014	4.155	0.54	18.75
5/1/2014	5/25/2014	4.155	0.54	
5/1/2014	5/26/2014	4.155	0.36	35.75
5/1/2014	5/27/2014	4.25	-1.42	22.1
5/1/2014	5/28/2014	4.345	-0.14	33.65
5/1/2014	5/30/2014	4.44	-0.03	32.26
5/1/2014	5/31/2014	4.44	-0.03	32.26
6/1/2014	6/1/2014	4.32	18.59	41.27
6/1/2014	6/2/2014	4.32	8.21	40.67
6/1/2014	6/3/2014	4.445	-1.02	27.19

6/1/2014	6/4/2014	4.57	-0.26	34.3
6/1/2014	6/5/2014	4.545	0.59	39.44
6/1/2014	6/6/2014	4.55	1.41	37.39
6/1/2014	6/7/2014	4.535	1.41	37.39
6/1/2014	6/8/2014	4.535	17.7	
6/1/2014	6/9/2014	4.535	17.7	36.38
6/1/2014	6/10/2014	4.515	4.44	36.46
6/1/2014	6/11/2014	4.45	18.56	41.27
6/1/2014	6/12/2014	4.41	19.71	36.38
6/1/2014	6/13/2014	4.415	21.06	33.1
6/1/2014	6/14/2014	4.51	21.06	33.1
6/1/2014	6/15/2014	4.51	29.19	
6/1/2014	6/16/2014	4.51	29.19	35.83
6/1/2014	6/17/2014	4.54	25.89	34.45
6/1/2014	6/18/2014	4.535	17.76	29.14
6/1/2014	6/19/2014	4.525	1.28	29.07
6/1/2014	6/20/2014	4.5	2.39	32.64
6/1/2014	6/21/2014	4.405	2.39	32.64
6/1/2014	6/22/2014	4.405	20.56	
6/1/2014	6/23/2014	4.405	20.56	38.54
6/1/2014	6/24/2014	4.375	1.62	32.22
6/1/2014	6/25/2014	4.465	15.38	37.69
6/1/2014	6/26/2014	4.47	6.82	32.77
6/1/2014	6/27/2014	4.375	1.9	27.03
6/1/2014	6/28/2014	4.25	1.9	27.03
6/1/2014	6/29/2014	4.25	7.61	
6/1/2014	6/30/2014	4.25	7.61	37.99
7/1/2014	7/1/2014	4.33	19.16	46.33
7/1/2014	7/2/2014	4.24	3.95	33.76
7/1/2014	7/3/2014	4.215	3.95	33.76
7/1/2014	7/4/2014	4.18	16.61	30.65
7/1/2014	7/5/2014	4.18	27.67	
7/1/2014	7/7/2014	4.18	27.67	39.92
7/1/2014	7/8/2014	4.135	23.93	42.07
7/1/2014	7/9/2014	4.135	17.45	34.45
7/1/2014	7/10/2014	4.13	22.45	38.37
7/1/2014	7/11/2014	4.1	23.2	41.2
7/1/2014	7/12/2014	4.07	23.2	41.2
7/1/2014	7/13/2014	4.07	37.08	
7/1/2014	7/14/2014	4.07	37.08	63.35
7/1/2014	7/15/2014	4.125	28.16	56.84
7/1/2014	7/16/2014	4.1	27.73	41.47
7/1/2014	7/17/2014	4.065	22.88	33.26
7/1/2014	7/18/2014	3.935	25.21	32.4
7/1/2014	7/19/2014	3.825	25.21	32.4
7/1/2014	7/20/2014	3.825	28.88	
7/1/2014	7/21/2014	3.825	28.88	34.63
7/1/2014	7/22/2014	3.78	28.51	36.9
7/1/2014	7/23/2014	3.76	28.21	31.96
7/1/2014	7/24/2014	3.74	26.22	30.76
7/1/2014	7/25/2014	3.735	27.42	34.07
7/1/2014	7/26/2014	3.69	27.42	34.07
7/1/2014	7/27/2014	3.69	28.55	
7/1/2014	7/28/2014	3.69	28.55	43.04
7/1/2014	7/29/2014	3.735	28.69	45.55
7/1/2014	7/30/2014	3.685	27.71	45.84
7/1/2014	7/31/2014	3.665	27.6	47.49
8/1/2014	8/1/2014	3.76	31.45	54.69
8/1/2014	8/2/2014	3.685	31.45	54.69
8/1/2014	8/3/2014	3.685	41.36	
8/1/2014	8/4/2014	3.685	41.36	62.8
8/1/2014	8/5/2014	3.725	27.91	42.98
8/1/2014	8/6/2014	3.805	26.11	36.97
8/1/2014	8/7/2014	3.795	26.67	36.81
8/1/2014	8/8/2014	3.825	26.54	35.96
8/1/2014	8/9/2014	3.75	26.54	35.96
8/1/2014	8/10/2014	3.75	35.05	
8/1/2014	8/11/2014	3.75	35.05	51.39
8/1/2014	8/12/2014	3.81	37.12	47.5
8/1/2014	8/13/2014	3.82	28.75	37.12
8/1/2014	8/14/2014	3.77	29.65	37.19
8/1/2014	8/15/2014	3.79	30.99	37.76
8/1/2014	8/16/2014	3.72	30.99	37.76
8/1/2014	8/17/2014	3.72	34.89	46.68
8/1/2014	8/18/2014	3.72	34.89	46.68
8/1/2014	8/19/2014	3.7	29.22	37.05
8/1/2014	8/20/2014	3.775	28.89	36.43
8/1/2014	8/21/2014	3.745	31.39	39.83
8/1/2014	8/22/2014	3.75	33.82	39.82
8/1/2014	8/23/2014	3.74	33.82	39.82
8/1/2014	8/24/2014	3.74	36.31	
8/1/2014	8/25/2014	3.74	36.31	44.3
8/1/2014	8/26/2014	3.795	34.94	47.32
8/1/2014	8/27/2014	3.835	34.75	42.67
8/1/2014	8/28/2014	3.865	31.57	38.69
8/1/2014	8/29/2014	3.85	31.57	38.69
8/1/2014	8/30/2014	3.85	29.72	30.01
8/1/2014	8/31/2014	3.85	29.72	
9/1/2014	9/1/2014	3.83	34.67	37.5
9/1/2014	9/2/2014	3.83	34.67	37.5
9/1/2014	9/3/2014	3.78	30.83	36.64
9/1/2014	9/4/2014	3.76	33.87	40.16
9/1/2014	9/5/2014	3.725	34.63	39.48
9/1/2014	9/6/2014	3.685	34.63	39.48
9/1/2014	9/7/2014	3.685	37.56	
9/1/2014	9/8/2014	3.685	37.56	38.63
9/1/2014	9/9/2014	3.72	32.06	38.13
9/1/2014	9/10/2014	3.9	32.67	38.79
9/1/2014	9/11/2014	3.87	31.07	38.55
9/1/2014	9/12/2014	3.79	32.37	40.29
9/1/2014	9/13/2014	3.8	32.37	40.29
9/1/2014	9/14/2014	3.8	40.19	
9/1/2014	9/15/2014	3.8	40.19	50.52
9/1/2014	9/16/2014	3.93	33.35	46.71
9/1/2014	9/17/2014	3.84	32.85	44.37
9/1/2014	9/18/2014	3.93	30.82	40.33
9/1/2014	9/19/2014	3.915	31.73	40.07
9/1/2014	9/20/2014	3.78	31.73	40.07
9/1/2014	9/21/2014	3.76	34.1	
9/1/2014	9/22/2014	3.76	34.1	40.41
9/1/2014	9/23/2014	3.795	32.13	39.79
9/1/2014	9/24/2014	3.795	32.39	39.22
9/1/2014	9/25/2014	3.71	33.14	39.59
9/1/2014	9/26/2014	3.705	32.51	38.59
9/1/2014	9/27/2014	3.7	32.51	38.59
9/1/2014	9/28/2014	3.7	31.78	
9/1/2014	9/29/2014	3.7	31.78	33.98
9/1/2014	9/30/2014	3.775	27.21	32.84
10/1/2014	10/1/2014	3.86	29	32.74
10/1/2014	10/2/2014	3.88	31.54	37.75
10/1/2014	10/3/2014	3.72	32.28	34.56
10/1/2014	10/4/2014	3.675	32.28	34.56
10/1/2014	10/5/2014	3.675	34.23	
10/1/2014	10/6/2014	3.675	34.23	36.25
10/1/2014	10/7/2014	3.625	31.51	34.84
10/1/2014	10/8/2014	3.635	31.6	35.46
10/1/2014	10/9/2014	3.65	32.22	36.89
10/1/2014	10/10/2014	3.62	27.18	31.27
10/1/2014	10/11/2014	3.485	27.18	31.27
10/1/2014	10/12/2014	3.485	30.47	
10/1/2014	10/13/2014	3.485	30.47	35.07
10/1/2014	10/14/2014	3.61	28.63	35.45
10/1/2014	10/15/2014	3.66	28.22	31.51
10/1/2014	10/16/2014	3.55	31.31	34.35
10/1/2014	10/17/2014	3.55	30.01	33.32
10/1/2014	10/18/2014	3.475	30.01	33.32
10/1/2014	10/19/2014	3.475	31.61	
10/1/2014	10/20/2014	3.475	31.61	34.38
10/1/2014	10/21/2014	3.44	27.34	31.17
10/1/2014	10/22/2014	3.375	26.87	31.17
10/1/2014	10/23/2014	3.39	27.27	30.6
10/1/2014	10/24/2014	3.33	26.57	31.2
10/1/2014	10/25/2014	3.215	28.57	31.2
10/1/2014	10/26/2014	3.215	26.01	
10/1/2014	10/27/2014	3.215	26.01	32.9
10/1/2014	10/28/2014	3.325	28.45	32.68
10/1/2014	10/29/2014	3.37	28.81	29.58
10/1/2014	10/30/2014	3.515	24.73	27.2
10/1/2014	10/31/2014	3.625	24.73	27.2
11/1/2014	11/1/2014	3.565	25.01	26.46
11/1/2014	11/2/2014	3.565	25.77	
11/1/2014	11/3/2014	3.565	25.77	31.01
11/1/2014	11/4/2014	3.275	24.08	27.48
11/1/2014	11/5/2014	3.3	25.78	27.76
11/1/2014	11/6/2014	3.45	24.15	25.58
11/1/2014	11/7/2014	3.555	27.03	28.26
11/1/2014	11/8/2014	3.61	27.03	28.26
11/1/2014	11/9/2014	3.61	26.31	
11/1/2014	11/10/2014	3.61	26.31	30.38
11/1/2014	11/11/2014	4.245	27.8	32.71
11/1/2014	11/12/2014	4.2	27.8	32.71

11/1/2014	11/13/2014	4.205	43.97	57.79
11/1/2014	11/14/2014	4.205	34.78	43.66
11/1/2014	11/15/2014	4.21	34.78	43.66
11/1/2014	11/16/2014	4.21	32.68	
11/1/2014	11/17/2014	4.21	32.68	42.31
11/1/2014	11/18/2014	4.395	32.22	38.47
11/1/2014	11/19/2014	4.42	31.63	37.84
11/1/2014	11/20/2014	4.635	32.41	36.93
11/1/2014	11/21/2014	4.51	28.54	32.45
11/1/2014	11/22/2014	4.27	38.64	32.45
11/1/2014	11/23/2014	4.27	29.76	
11/1/2014	11/24/2014	4.27	29.76	38.4
11/1/2014	11/25/2014	4.18	27.15	29.11
11/1/2014	11/26/2014	4.12	27.15	29.11
11/1/2014	11/27/2014	4.12	27.15	
11/1/2014	11/28/2014	4.12	31.17	30.76
11/1/2014	11/29/2014	4.12	31.17	30.76
11/1/2014	11/30/2014	4.12	31.17	
12/1/2014	12/1/2014	4.305	33.16	44.94
12/1/2014	12/2/2014	4.075	36.42	54.12
12/1/2014	12/3/2014	3.875	30.43	42.84
12/1/2014	12/4/2014	3.71	26.8	33.28
12/1/2014	12/5/2014	3.475	24.61	28.24
12/1/2014	12/6/2014	3.31	24.61	28.24
12/1/2014	12/7/2014	3.31	25.88	
12/1/2014	12/8/2014	3.31	25.88	29.45
12/1/2014	12/9/2014	3.305	23.89	27.98
12/1/2014	12/10/2014	3.385	23.67	26.45
12/1/2014	12/11/2014	3.33	23.05	25.07
12/1/2014	12/12/2014	3.35	24.85	28.27
12/1/2014	12/13/2014	3.41	24.95	28.27
12/1/2014	12/14/2014	3.41	27.22	
12/1/2014	12/15/2014	3.41	27.22	32.42
12/1/2014	12/16/2014	3.585	26.79	32.6
12/1/2014	12/17/2014	3.55	26.03	31.7
12/1/2014	12/18/2014	3.655	24.39	29.31
12/1/2014	12/19/2014	3.54	23.66	26.66
12/1/2014	12/20/2014	3.155	23.66	26.66
12/1/2014	12/21/2014	3.155	22.83	
12/1/2014	12/22/2014	3.155	22.83	26.46
12/1/2014	12/23/2014	2.76	22.84	23.83
12/1/2014	12/24/2014	2.765	20.83	22.39
12/1/2014	12/25/2014	2.885	20.83	
12/1/2014	12/26/2014	2.885	20.83	22.39
12/1/2014	12/27/2014	2.885	19.5	23.62
12/1/2014	12/28/2014	2.885	19.5	
12/1/2014	12/29/2014	2.885	19.5	23.62
12/1/2014	12/30/2014	3.7	25.58	36.41
12/1/2014	12/31/2014	3.465	25.81	35.62
1/1/2015	1/1/2015	3.13	24.63	
1/1/2015	1/2/2015	3.13	24.83	27.22
1/1/2015	1/3/2015	2.995	21.3	21.97
1/1/2015	1/4/2015	2.995	21.3	
1/1/2015	1/5/2015	2.995	21.3	21.97
1/1/2015	1/6/2015	3.08	22.31	23.92
1/1/2015	1/7/2015	2.84	21.13	23.29
1/1/2015	1/8/2015	2.985	21.34	23.74
1/1/2015	1/9/2015	2.765	20	22.76
1/1/2015	1/10/2015	2.8	20	22.76
1/1/2015	1/11/2015	2.8	19.84	
1/1/2015	1/12/2015	2.8	19.94	23.5
1/1/2015	1/13/2015	2.735	20.26	24.71
1/1/2015	1/14/2015	2.73	19.49	24.77
1/1/2015	1/15/2015	2.9	18.19	22.23
1/1/2015	1/16/2015	3.005	18.19	22.23
1/1/2015	1/17/2015	2.76	18.76	23.71
1/1/2015	1/18/2015	2.76	18.76	
1/1/2015	1/19/2015	2.76	19.09	24.14
1/1/2015	1/20/2015	2.76	19.09	24.14
1/1/2015	1/21/2015	2.705	19.39	23.73
1/1/2015	1/22/2015	2.725	19.53	24.04
1/1/2015	1/23/2015	2.67	17.93	21.16
1/1/2015	1/24/2015	2.61	17.63	21.16
1/1/2015	1/25/2015	2.61	18.52	
1/1/2015	1/26/2015	2.61	18.52	23.71
1/1/2015	1/27/2015	2.57	17.35	20.78
1/1/2015	1/28/2015	2.59	18.04	22.53
1/1/2015	1/29/2015	2.555	18.19	22.47
1/1/2015	1/30/2015	2.53	18.17	21.33
1/1/2015	1/31/2015	2.53	18.17	21.33
2/1/2015	2/1/2015	2.27	19.61	
2/1/2015	2/2/2015	2.27	19.61	20.58
2/1/2015	2/3/2015	2.28	14.63	20.14
2/1/2015	2/4/2015	2.29	12.79	21.94
2/1/2015	2/5/2015	2.31	14.29	20.59
2/1/2015	2/6/2015	2.155	7.27	12.11
2/1/2015	2/7/2015	2.085	7.27	12.11
2/1/2015	2/8/2015	2.085	12.09	
2/1/2015	2/9/2015	2.085	12.09	13.53
2/1/2015	2/10/2015	2.225	5.88	17.7
2/1/2015	2/11/2015	2.285	11.97	20.01
2/1/2015	2/12/2015	2.45	11.93	19.15
2/1/2015	2/13/2015	2.39	11.93	19.15
2/1/2015	2/14/2015	2.235	5.01	8.93
2/1/2015	2/15/2015	2.235	5.01	
2/1/2015	2/16/2015	2.235	6.51	19.51
2/1/2015	2/17/2015	2.235	6.51	19.51
2/1/2015	2/18/2015	2.43	5.47	19.67
2/1/2015	2/19/2015	2.41	2.29	15.97
2/1/2015	2/20/2015	2.48	2.46	16
2/1/2015	2/21/2015	2.645	2.46	16
2/1/2015	2/22/2015	2.645	12.22	
2/1/2015	2/23/2015	2.645	12.22	24.09
2/1/2015	2/24/2015	2.78	14.06	24.03
2/1/2015	2/25/2015	2.65	15.43	24.73
2/1/2015	2/26/2015	2.78	16.41	24.4
2/1/2015	2/27/2015	2.635	15.01	21.04
2/1/2015	2/28/2015	2.635	15.01	21.04
3/1/2015	3/1/2015	2.445	20.06	
3/1/2015	3/2/2015	2.445	20.06	23.62
3/1/2015	3/3/2015	2.59	19.74	24.25
3/1/2015	3/4/2015	2.64	19.99	23.19
3/1/2015	3/5/2015	2.665	19.26	22.94
3/1/2015	3/6/2015	2.475	18.06	19.93
3/1/2015	3/7/2015	2.365	18.06	19.93
3/1/2015	3/8/2015	2.365	19.83	
3/1/2015	3/9/2015	2.365	19.83	20.92
3/1/2015	3/10/2015	2.28	18.39	20.85
3/1/2015	3/11/2015	2.295	17.16	20.46
3/1/2015	3/12/2015	2.375	15.64	19.69
3/1/2015	3/13/2015	2.345	16.16	18.54
3/1/2015	3/14/2015	2.265	16.16	18.54
3/1/2015	3/15/2015	2.265	18.41	
3/1/2015	3/16/2015	2.265	18.41	21.22
3/1/2015	3/17/2015	2.28	17.14	19.07
3/1/2015	3/18/2015	2.38	16.76	19.87
3/1/2015	3/19/2015	2.365	17.92	19.56
3/1/2015	3/20/2015	2.43	13.99	15.99
3/1/2015	3/21/2015	2.325	13.99	15.99
3/1/2015	3/22/2015	2.355	14.99	
3/1/2015	3/23/2015	2.325	14.99	17.31
3/1/2015	3/24/2015	2.275	13.9	16.56
3/1/2015	3/25/2015	2.37	16.77	19.78
3/1/2015	3/26/2015	2.325	15.12	19.01
3/1/2015	3/27/2015	2.27	4.15	10.2
3/1/2015	3/28/2015	2.165	4.15	10.2
3/1/2015	3/29/2015	2.165	5.85	
3/1/2015	3/30/2015	2.165	5.85	16.45
3/1/2015	3/31/2015	2.165	0.24	5.72
4/1/2015	4/1/2015	2.215	2.62	15.86
4/1/2015	4/2/2015	2.215	2.62	15.86
4/1/2015	4/3/2015	2.22	13.9	18.99
4/1/2015	4/4/2015	2.22	13.9	18.99
4/1/2015	4/5/2015	2.22	18.17	
4/1/2015	4/6/2015	2.22	18.17	20.66
4/1/2015	4/7/2015	2.3	17.92	20.85
4/1/2015	4/8/2015	2.315	16.76	19
4/1/2015	4/9/2015	2.305	16.46	20.54
4/1/2015	4/10/2015	2.29	15.77	17.99
4/1/2015	4/11/2015	2.195	15.77	17.99
4/1/2015	4/12/2015	2.195	19.12	
4/1/2015	4/13/2015	2.195	19.12	20.32
4/1/2015	4/14/2015	2.23	14.79	16.78
4/1/2015	4/15/2015	2.28	19.72	21.75
4/1/2015	4/16/2015	2.27	20.07	21.74
4/1/2015	4/17/2015	2.25	18.73	20.06
4/1/2015	4/18/2015	2.255	18.73	20.06
4/1/2015	4/19/2015	2.255	20.84	
4/1/2015	4/20/2015	2.255	20.84	21.93
4/1/2015	4/21/2015	2.255	17.46	19.85
4/1/2015	4/22/2015	2.3	15.42	16.93
4/1/2015	4/23/2015	2.34	17.35	18.78

4/1/2015	4/24/2015	2.295	17.22	18.73
4/1/2015	4/25/2015	2.28	17.22	18.73
4/1/2015	4/26/2015	2.28	22.49	23.62
4/1/2015	4/27/2015	2.28	22.49	23.62
4/1/2015	4/28/2015	2.265	20.24	22.99
4/1/2015	4/29/2015	2.295	18.63	22.54
4/1/2015	4/30/2015	2.32	18.55	21.98
5/1/2015	5/1/2015	2.33	18.36	20.99
5/1/2015	5/2/2015	2.44	18.36	20.99
5/1/2015	5/3/2015	2.44	25.06	27.89
5/1/2015	5/4/2015	2.44	25.06	27.89
5/1/2015	5/5/2015	2.47	19.81	24.81
5/1/2015	5/6/2015	2.485	27.14	33.84
5/1/2015	5/7/2015	2.54	29.69	37.82
5/1/2015	5/8/2015	2.56	28.85	35.99
5/1/2015	5/9/2015	2.59	28.55	35.99
5/1/2015	5/10/2015	2.59	32.19	34.42
5/1/2015	5/11/2015	2.59	32.19	34.42
5/1/2015	5/12/2015	2.63	25.72	29.59
5/1/2015	5/13/2015	2.64	25.02	27.75
5/1/2015	5/14/2015	2.61	25.99	28.23
5/1/2015	5/15/2015	2.575	20.64	23.56
5/1/2015	5/16/2015	2.68	20.64	23.56
5/1/2015	5/17/2015	2.68	24.56	27.24
5/1/2015	5/18/2015	2.68	24.56	27.24
5/1/2015	5/19/2015	2.725	22.59	26.29
5/1/2015	5/20/2015	2.775	21.79	27.83
5/1/2015	5/21/2015	2.675	20.02	24.85
5/1/2015	5/22/2015	2.64	20.02	24.85
5/1/2015	5/23/2015	2.54	19.82	19.95
5/1/2015	5/24/2015	2.54	19.92	
5/1/2015	5/25/2015	2.54	18.99	
5/1/2015	5/26/2015	2.54	18.99	23.17
5/1/2015	5/27/2015	2.46	19.26	23.69
5/1/2015	5/28/2015	2.5	20.38	24.25
5/1/2015	5/29/2015	2.42	20.38	24.25
5/1/2015	5/30/2015	2.42	22.89	22.45
5/1/2015	5/31/2015	2.42	22.89	
6/1/2015	6/1/2015	2.38	19.7	21.52
6/1/2015	6/2/2015	2.415	17.24	20.13
6/1/2015	6/3/2015	2.35	20.08	23.25
6/1/2015	6/4/2015	2.37	23.41	25.52
6/1/2015	6/5/2015	2.31	22.67	25.32
6/1/2015	6/6/2015	2.245	22.67	25.32
6/1/2015	6/7/2015	2.245	24.25	
6/1/2015	6/8/2015	2.245	24.25	31.69
6/1/2015	6/9/2015	2.245	24.27	36.15
6/1/2015	6/10/2015	2.61	21.16	31
6/1/2015	6/11/2015	2.635	18.64	26.48
6/1/2015	6/12/2015	2.605	20.83	26.44
6/1/2015	6/13/2015	2.52	20.83	26.44
6/1/2015	6/14/2015	2.52	25.59	
6/1/2015	6/15/2015	2.52	25.59	34.86
6/1/2015	6/16/2015	2.64	22.8	31.94
6/1/2015	6/17/2015	2.665	25.78	34.54
6/1/2015	6/18/2015	2.72	26.22	37.82
6/1/2015	6/19/2015	2.645	26.62	34.94
6/1/2015	6/20/2015	2.535	26.62	34.94
6/1/2015	6/21/2015	2.535	31.08	
6/1/2015	6/22/2015	2.535	31.08	35.82
6/1/2015	6/23/2015	2.56	27.19	40.86
6/1/2015	6/24/2015	2.61	26.97	55.74
6/1/2015	6/25/2015	2.6	26.8	66.49
6/1/2015	6/26/2015	2.6	26.42	68.12
6/1/2015	6/27/2015	2.605	26.42	68.12
6/1/2015	6/28/2015	2.605	29.62	
6/1/2015	6/29/2015	2.605	29.62	53.32
6/1/2015	6/30/2015	2.64	25.16	54.55
7/1/2015	7/1/2015	2.605	28.85	95.41
7/1/2015	7/2/2015	2.581	25.81	79.68
7/1/2015	7/3/2015	2.555	25.81	79.68
7/1/2015	7/4/2015	2.555	37.84	
7/1/2015	7/5/2015	2.555	37.84	
7/1/2015	7/6/2015	2.555	37.84	64.19
7/1/2015	7/7/2015	2.515	24.47	45.76
7/1/2015	7/8/2015	2.48	24.49	45.46
7/1/2015	7/9/2015	2.495	24.21	36.83
7/1/2015	7/10/2015	2.385	21	26.84
7/1/2015	7/11/2015	2.48	21	26.84
7/1/2015	7/12/2015	2.48	23.97	
7/1/2015	7/13/2015	2.48	23.97	28.35
7/1/2015	7/14/2015	2.795	23.72	30.48
7/1/2015	7/15/2015	2.875	23.09	27.83
7/1/2015	7/16/2015	2.855	22.46	27.65
7/1/2015	7/17/2015	2.78	23.52	33.46
7/1/2015	7/18/2015	2.775	23.52	33.46
7/1/2015	7/19/2015	2.775	25.05	
7/1/2015	7/20/2015	2.775	25.05	31.38
7/1/2015	7/21/2015	2.77	21.16	27.62
7/1/2015	7/22/2015	2.78	20.56	26.59
7/1/2015	7/23/2015	2.8	20.33	26.46
7/1/2015	7/24/2015	2.81	19.98	24.58
7/1/2015	7/25/2015	2.69	19.98	24.58
7/1/2015	7/26/2015	2.69	20.27	
7/1/2015	7/27/2015	2.69	20.27	25.81
7/1/2015	7/28/2015	2.765	23.49	32.16
7/1/2015	7/29/2015	2.785	24.36	42.31
7/1/2015	7/30/2015	2.71	25.63	50.85
7/1/2015	7/31/2015	2.59	25.63	50.85
8/1/2015	8/1/2015	2.625	25.36	38.84
8/1/2015	8/2/2015	2.625	30.03	
8/1/2015	8/3/2015	2.625	30.03	35.15
8/1/2015	8/4/2015	2.645	23.63	29.48
8/1/2015	8/5/2015	2.7	22.41	26.59
8/1/2015	8/6/2015	2.73	24.33	27.79
8/1/2015	8/7/2015	2.625	23.26	26.3
8/1/2015	8/8/2015	2.635	23.26	26.3
8/1/2015	8/9/2015	2.635	23.77	
8/1/2015	8/10/2015	2.635	23.77	29.85
8/1/2015	8/11/2015	2.72	26.03	40.43
8/1/2015	8/12/2015	2.725	25.07	41.87
8/1/2015	8/13/2015	2.78	22.54	39.3
8/1/2015	8/14/2015	2.765	20.1	25.63
8/1/2015	8/15/2015	2.665	20.1	25.63
8/1/2015	8/16/2015	2.665	22.56	35
8/1/2015	8/17/2015	2.665	22.56	35
8/1/2015	8/18/2015	2.635	24.27	48.62
8/1/2015	8/19/2015	2.56	22.05	39.81
8/1/2015	8/20/2015	2.58	17.99	24.49
8/1/2015	8/21/2015	2.49	18.48	24.34
8/1/2015	8/22/2015	2.455	18.48	24.34
8/1/2015	8/23/2015	2.455	23.1	
8/1/2015	8/24/2015	2.455	23.1	30.48
8/1/2015	8/25/2015	2.51	19.43	31.62
8/1/2015	8/26/2015	2.48	21.16	35.29
8/1/2015	8/27/2015	2.55	21.59	33.42
8/1/2015	8/28/2015	2.505	24.11	27.02
8/1/2015	8/29/2015	2.47	24.11	27.02
8/1/2015	8/30/2015	2.47	23.19	
8/1/2015	8/31/2015	2.47	23.19	27.32
9/1/2015	9/1/2015	2.495	20.38	26.11
9/1/2015	9/2/2015	2.575	19.03	24.88
9/1/2015	9/3/2015	2.625	21.68	26.61
9/1/2015	9/4/2015	2.48	21.88	26.61
9/1/2015	9/5/2015	2.445	20.32	22.05
9/1/2015	9/6/2015	2.445	20.32	22.05
9/1/2015	9/7/2015	2.445	24.27	
9/1/2015	9/8/2015	2.445	24.27	29.45
9/1/2015	9/9/2015	2.615	23.86	36.22
9/1/2015	9/10/2015	2.615	25.05	35.43
9/1/2015	9/11/2015	2.59	24.89	29.74
9/1/2015	9/12/2015	2.595	24.89	29.74
9/1/2015	9/13/2015	2.595	22.58	
9/1/2015	9/14/2015	2.595	22.58	27.44
9/1/2015	9/15/2015	2.62	22.38	27.03
9/1/2015	9/16/2015	2.65	22.64	27.22
9/1/2015	9/17/2015	2.585	21.69	23.68
9/1/2015	9/18/2015	2.615	24.05	25.72
9/1/2015	9/19/2015	2.47	24.05	25.72
9/1/2015	9/20/2015	2.47	22.61	
9/1/2015	9/21/2015	2.47	22.61	25.39
9/1/2015	9/22/2015	2.56	23.4	25.79
9/1/2015	9/23/2015	2.555	22.7	24.44
9/1/2015	9/24/2015	2.565	23.51	26.13
9/1/2015	9/25/2015	2.525	22.68	23.92
9/1/2015	9/26/2015	2.46	22.68	23.92
9/1/2015	9/27/2015	2.46	24.8	
9/1/2015	9/28/2015	2.46	24.8	26.99
9/1/2015	9/29/2015	2.5	24.9	27.25
9/1/2015	9/30/2015	2.46	24.59	27.02
10/1/2015	10/1/2015	2.385	22.75	24.95
10/1/2015	10/2/2015	2.26	20.17	21.37

10/1/2015	10/3/2015	2.115	20.17	21.37
10/1/2015	10/4/2015	2.115	23.38	
10/1/2015	10/5/2015	2.115	23.38	24.19
10/1/2015	10/6/2015	2.21	23.48	24.08
10/1/2015	10/7/2015	2.225	21.65	23.51
10/1/2015	10/8/2015	2.265	23.25	24.5
10/1/2015	10/9/2015	2.27	20.87	21.98
10/1/2015	10/10/2015	2.235	20.87	21.98
10/1/2015	10/11/2015	2.235	23.66	
10/1/2015	10/12/2015	2.235	23.66	24.51
10/1/2015	10/13/2015	2.37	22.27	24.72
10/1/2015	10/14/2015	2.32	23.28	24.49
10/1/2015	10/15/2015	2.33	23.65	25.79
10/1/2015	10/16/2015	2.37	21.93	24.02
10/1/2015	10/17/2015	2.175	21.93	24.02
10/1/2015	10/18/2015	2.175	19.52	
10/1/2015	10/19/2015	2.175	19.52	20.94