

2022 Wildfire Season Recap

November 3, 2022



Topics Covered

- ◆ Preparation for 2022 wildfire season
- ◆ Community engagement
- ◆ Red flag warnings
- ◆ Wildfires and response
- ◆ Lessons learned and continuous improvement
- ◆ Preparing for 2023

Preparation for 2022 Wildfire Season



- ◆ Inspected high risk distribution and transmission lines, resulting in 40 line repairs and 2,040 trees trimmed
- ◆ Engaged customers on wildfire mitigation strategies through newsletters, bill inserts, and PSE.com website
- ◆ Improvements made to operational procedures, accompanied by annual training in May 2022
- ◆ Participated in five Emergency Management County Hazard Workshops

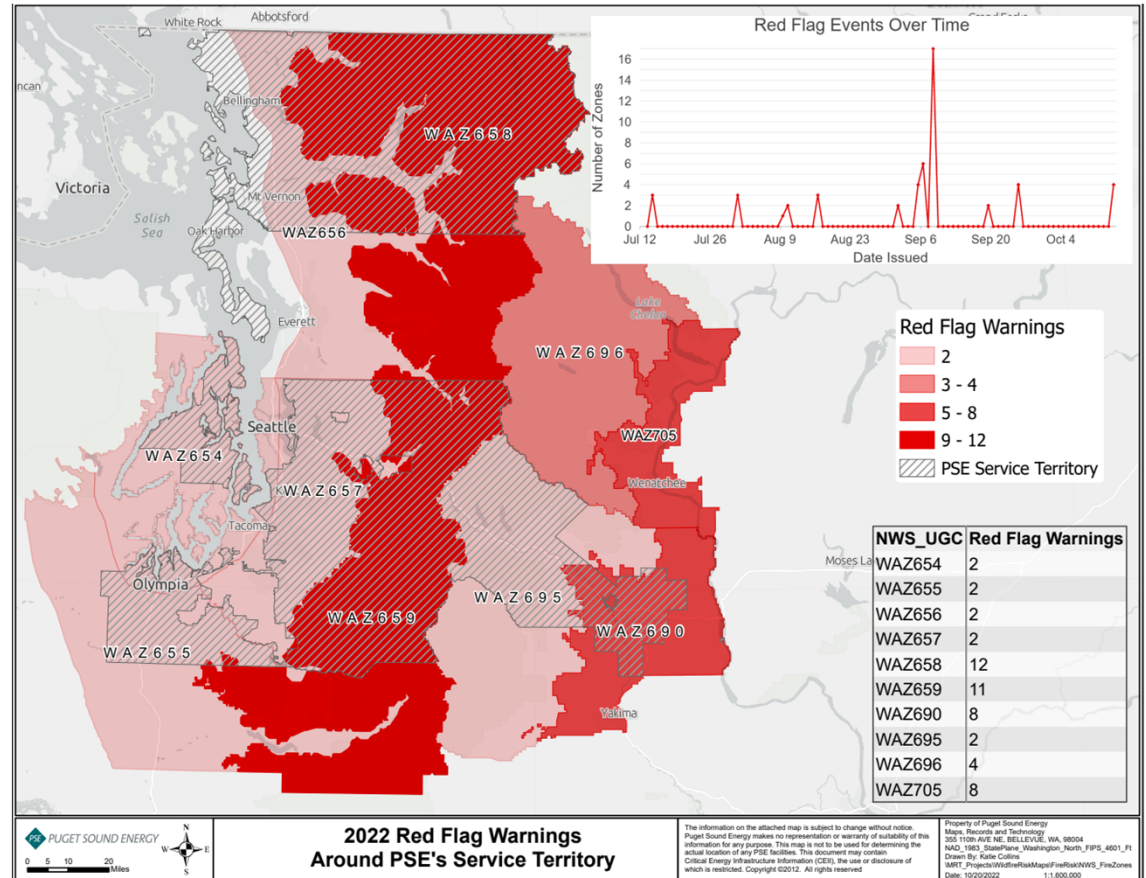
Community Engagement

Hosted town halls for the communities of West Cle Elum, Greenwater, and South Cle Elum

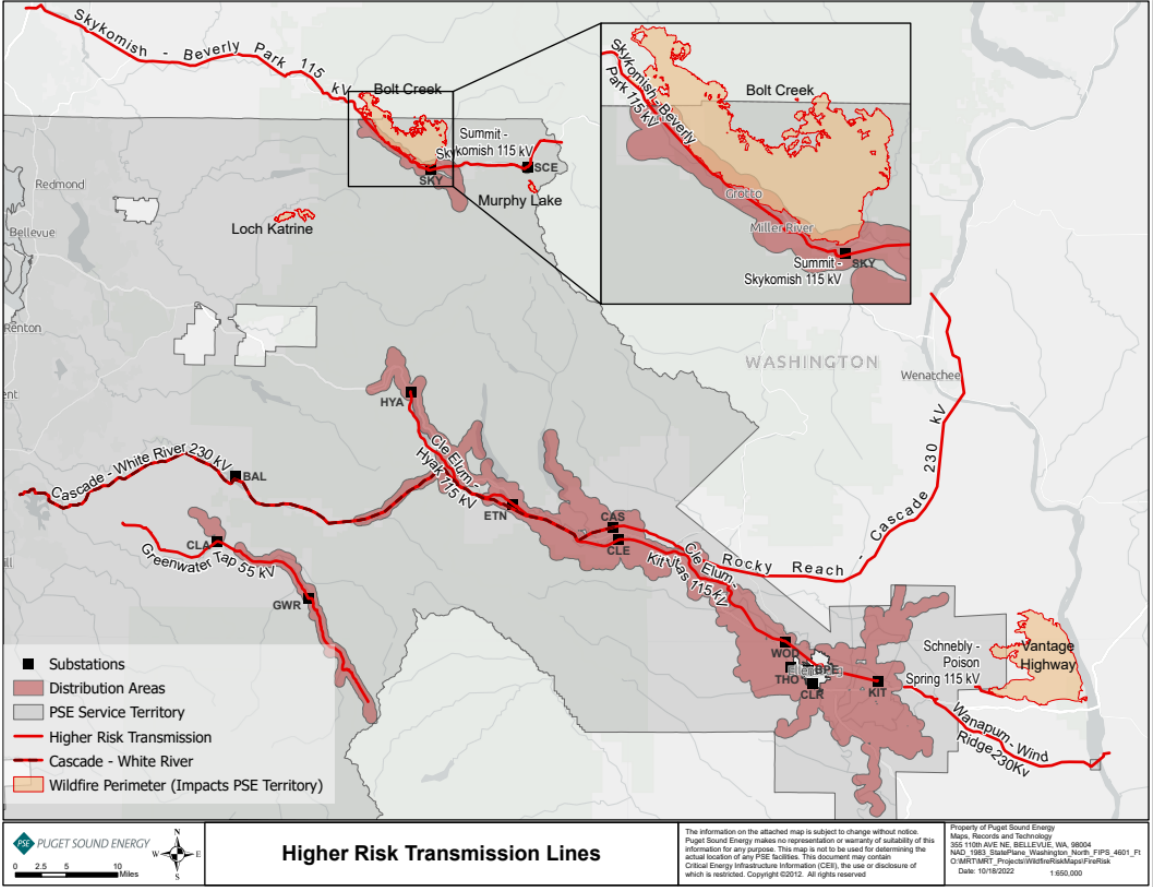
- ◆ Invited 5,450 customers, Department of Natural Resources, local fire and law enforcement, and community-based organizations representing vulnerable populations
- ◆ 129 community members engaged in the town halls to learn about PSE's wildfire mitigation and response plans and provide feedback on future Public Safety Power Shutoff (PSPS) planning
- ◆ Community members expressed concerns regarding the potential impacts of a PSPS
- ◆ PSE gained an understanding of specific needs for each community



Red Flag Warnings



Wildfires and Response



Lessons Learned and Continuous Improvement



Identify trends from Ignition events that could inform hardening strategies



Invest in preseason inspections, maintenance, and system hardening



Distinguish between shutoffs due to safety concerns as compared to a PSPS in stakeholder education



Refine clarity of internal roles and responsibility

Preparing for 2023 Wildfire Season



Continue developing PSE's risk model, including burn potential and fire propagation, likelihood and consequence of ignitions



Explore new technologies: high-definition cameras, granular weather data, drone program, and satellite imagery



Continue developing the PSPS plan



Ongoing engagement and collaboration with stakeholders and customers, especially in high risk areas



Incorporate equity in the 2023 Wildfire Mitigation and Response Plan