

**BEFORE THE  
WASHINGTON UTILITIES AND TRANSPORTATION COMMISSION**

**WASHINGTON UTILITIES AND  
TRANSPORTATION COMMISSION,**

**Complainant,**

**v.**

**AVISTA CORPORATION, DBA  
AVISTA UTILITIES,**

**Respondent.**

---

**DOCKETS UE-170485 and  
UG-170486 (*Consolidated*)**

**EXHIBIT RRS-3**

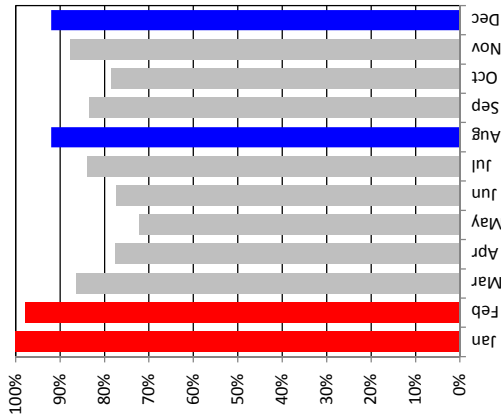
**MONTHLY PEAK DEMANDS AS A PERCENT OF THE ANNUAL SYSTEM PEAK**

**NOVEMBER 1, 2017**

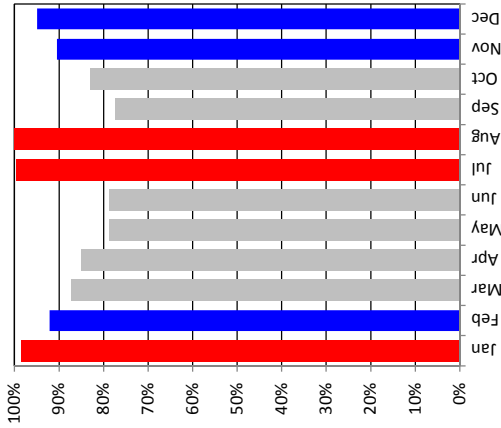
# AVISTA UTILITIES

## Monthly Peak Demands as a Percent of the Annual System Peak

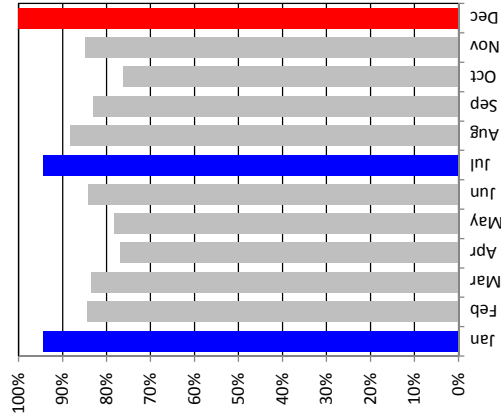
Calendar Year 2011



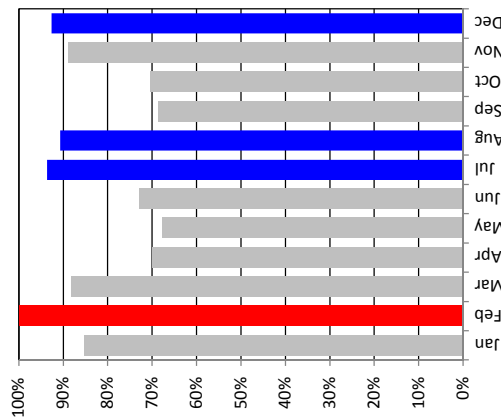
Calendar Year 2012



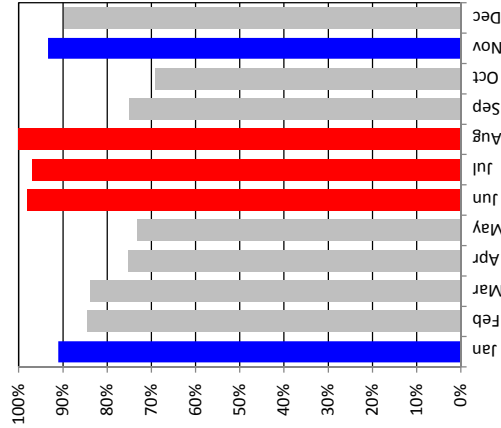
Calendar Year 2013



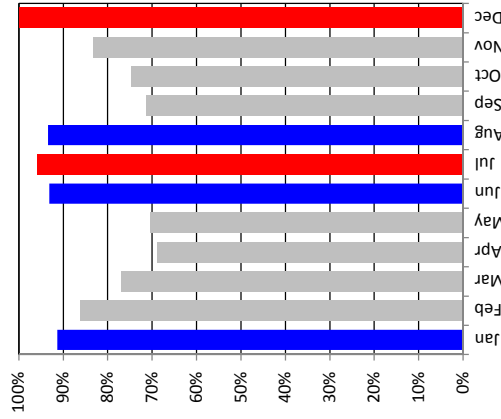
Calendar Year 2014



Calendar Year 2015



Calendar Year 2016



█ Monthly Peaks are Greater than 95%  
█ Monthly Peaks are 90% to 95%