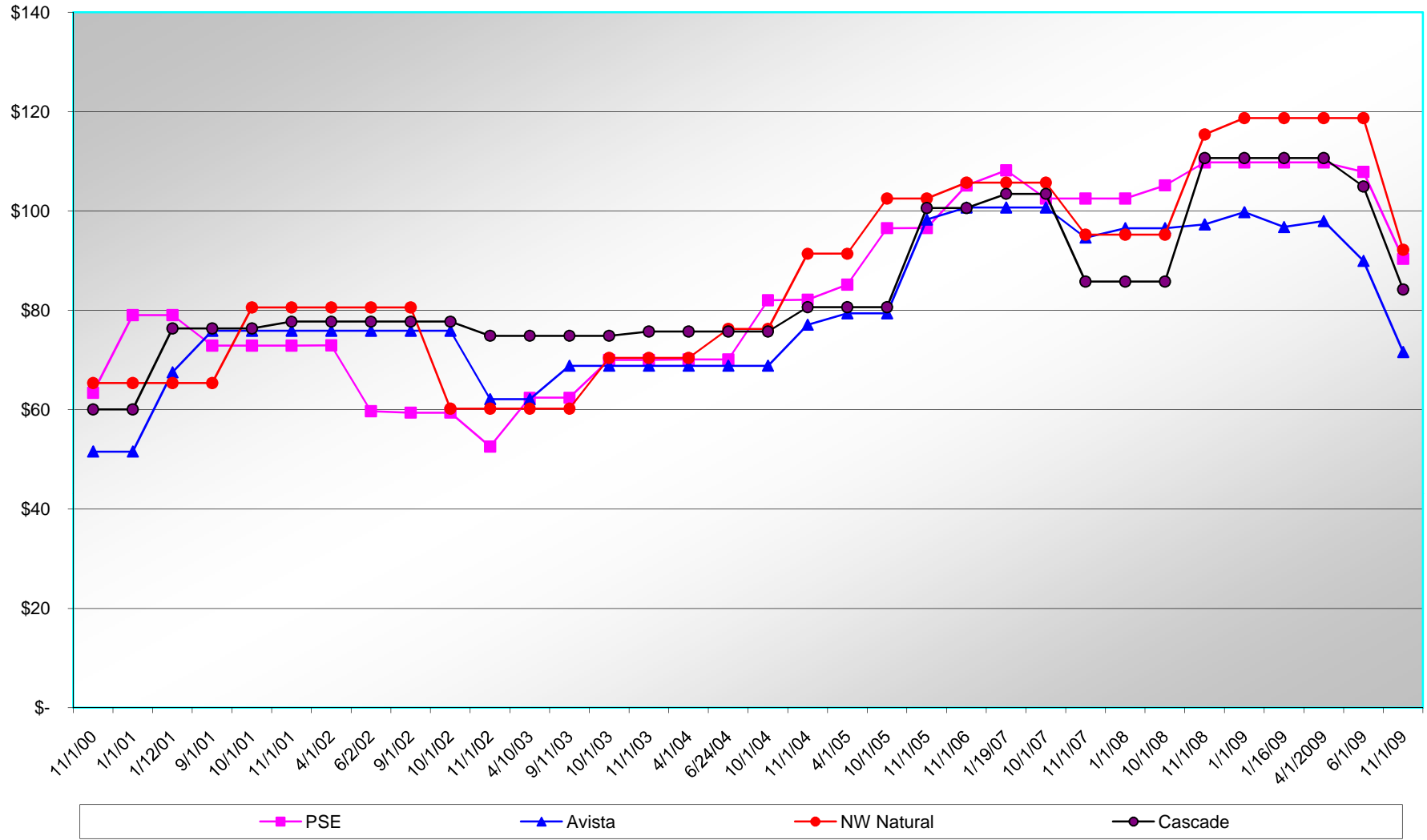


**Residential Gas Monthly Rates Comparison Average 80 Therms used per month
UG-091371 Memo Attachment**



Residential Electric Monthly Rates Comparison in WA

(Rates for PUDs include municipal taxes in their calculation, while IOUs do not. Depending on service area, rates for IOU need to apply different municipal taxes).

Avg
108.4066667
1.012483857

	11/1/00	1/1/01	1/12/01	9/1/01	10/1/01	11/1/01	4/1/02	6/2/02	9/1/02	10/1/02	11/1/02	4/10/03	9/11/03	10/1/03	11/1/03	4/1/04	6/24/04	10/1/04	11/1/04	4/1/05	10/1/05	11/1/05	11/1/06	1/19/07	10/1/07	11/1/07	1/1/08	10/1/08	11/1/08	1/1/09	1/16/09	4/1/2009	6/1/09	11/1/09
PSE	\$ 63.42	\$ 79.03	\$ 79.03	\$ 72.89	\$ 72.89	\$ 72.89	\$ 72.96	\$ 59.70	\$ 59.40	\$ 59.40	\$ 52.57	\$ 62.40	\$ 62.40	\$ 70.01	\$ 70.01	\$ 70.12	\$ 70.12	\$ 82.02	\$ 82.14	85.17	96.54	96.58	105.14	108.17	102.49	102.49	102.49	105.15	109.76	109.76	109.76	109.76	107.86	90.36
Avista	\$ 51.56	\$ 51.56	\$ 67.52	\$ 75.88	\$ 75.88	\$ 75.88	\$ 75.88	\$ 75.88	\$ 75.88	\$ 75.88	\$ 62.11	\$ 62.11	\$ 68.83	\$ 68.83	\$ 68.83	\$ 68.83	\$ 68.83	\$ 68.83	\$ 77.09	79.39	79.3888	98.27	100.71	100.71	100.71	94.63	96.54	96.54	97.3	99.75	96.77	97.98	89.96	71.6
NW Natural	\$ 65.36	\$ 65.36	\$ 65.36	\$ 65.36	\$ 80.58	\$ 80.58	\$ 80.58	\$ 80.58	\$ 80.58	\$ 60.20	\$ 60.20	\$ 60.20	\$ 60.20	\$ 70.42	\$ 70.42	\$ 70.42	\$ 76.26	\$ 76.26	\$ 91.39	\$ 91.39	102.508	102.508	105.68	105.68	105.68	95.24	95.24	95.24	115.39	118.69	118.69	118.69	118.69	92.19
Cascade	\$ 60.04	\$ 60.04	\$ 76.34	\$ 76.34	\$ 76.34	\$ 77.72	\$ 77.72	\$ 77.72	\$ 77.72	\$ 77.72	\$ 74.87	\$ 74.87	\$ 74.87	\$ 74.87	\$ 75.72	\$ 75.72	\$ 75.72	\$ 75.72	\$ 80.63	\$ 80.63	80.6296	100.57	100.57	103.45	103.45	85.8	85.8	85.80	110.63	110.63	110.63	110.63	104.91	84.2

#REF! #REF! #REF!