

# Welcome to Operation Lifesaver



**The 3 E's of  
Operation Lifesaver**

**Education**

**Engineering**

**Enforcement**

# It's a fact...

## Child Killed to Train Tracks Too Close to Train

The revised version details the train accident. The child was killed by the train tracks that were too close to the train. The child was killed by the train tracks that were too close to the train. The child was killed by the train tracks that were too close to the train.

## Pedestrian Struck by Commuter Train



The revised version details the pedestrian accident. A pedestrian was struck by a commuter train. The pedestrian was struck by a commuter train. The pedestrian was struck by a commuter train.

## Train Pushes Car Half Mile, Three Women Die



The revised version details the train accident. A train pushed a car half a mile, resulting in the deaths of three women. The train pushed a car half a mile, resulting in the deaths of three women.

The revised version details the train accident. A train pushed a car half a mile, resulting in the deaths of three women. The train pushed a car half a mile, resulting in the deaths of three women.

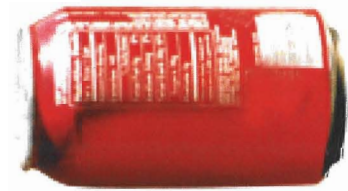
The revised version details the train accident. A train pushed a car half a mile, resulting in the deaths of three women. The train pushed a car half a mile, resulting in the deaths of three women.

# Any Time is Train Time





*3,000 lbs.*



*12 oz.*



*80,000 lbs.*



*12 million lbs.*

