

**LEGEND:**

**Maximum Hot Spot Exceedance Ratio Points**

- 0 to 1 (not a hot spot)
- 1.1 to 10
- 10.1 to 100
- 100.1 to 1,000

**Hot Spot Exceedance Ratio**

- 0 to 1 (not a hot spot)
- 1.1 to 10
- 10.1 to 100
- 100.1 to 1,000

**MGP Residuals**

- ▨ Interpreted Generalized Area Containing Solid/Semi-Solid Tar
- ▨ Interpreted Generalized Area Containing DNAPL Deemed Potentially Mobile
- ▨ Interpreted Generalized Area Containing DNAPL Deemed Residual (patchy, limited, and/or no well entry)
- ▨ Interpreted Generalized Area Containing Lampblack/Carbon Pitch (discrete layers and/or mixed in soil matrix)
- ▨ Interpreted Generalized Area Containing Spent Oxide
- ▭ Geographic Subareas
- ▭ Approximate Gasco OU Boundary

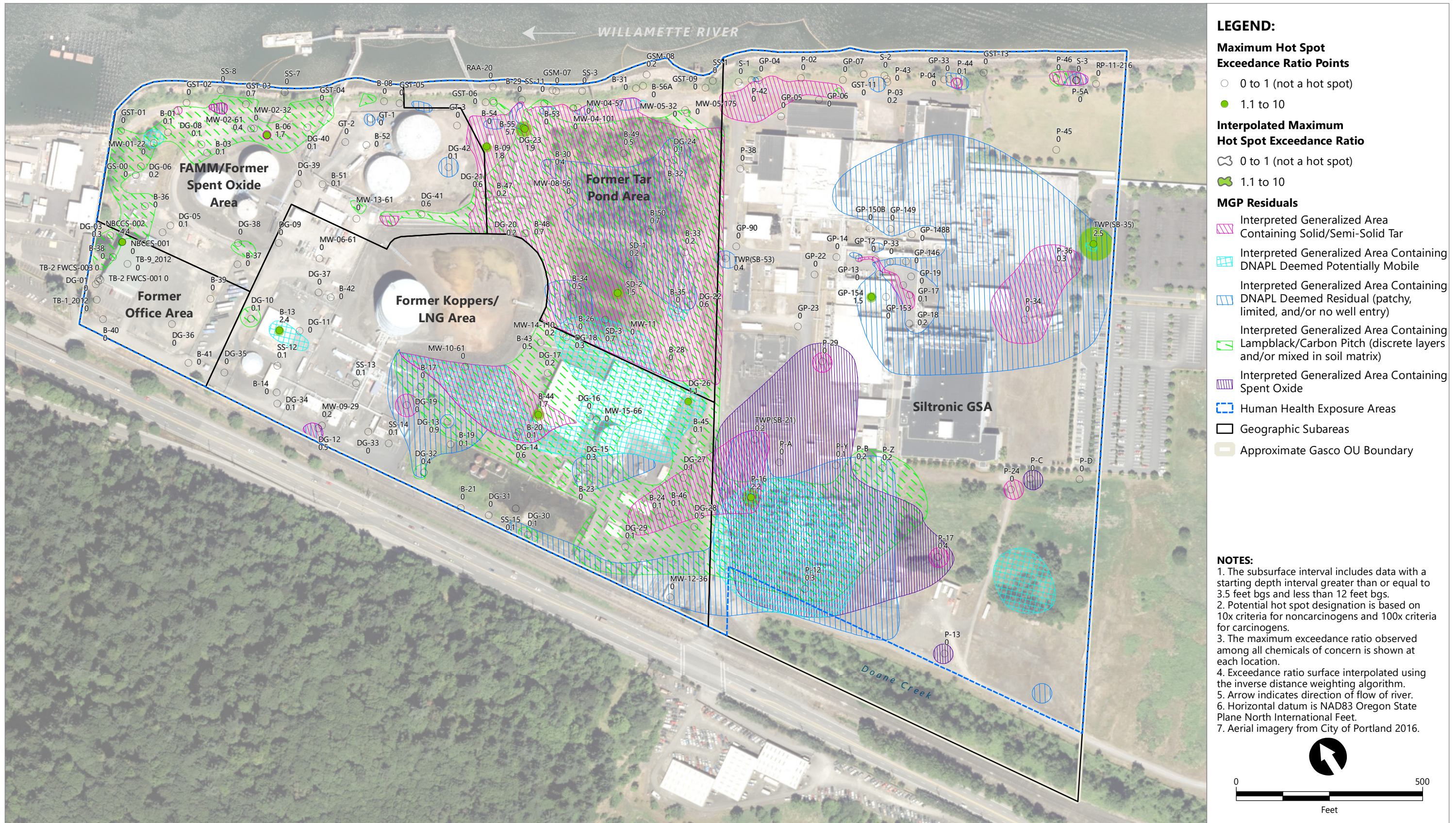
**NOTES:**

1. The surface interval includes data with a starting depth interval of less than 3.5 feet bgs.
2. Potential hot spot designation is based on 10x criteria for noncarcinogens and 100x criteria for carcinogens.
3. The maximum exceedance ratio observed among all chemicals of concern is shown at each location.
4. Exceedance ratio surface interpolated using the inverse distance weighting algorithm.
5. Arrow indicates direction of flow of river.
6. Horizontal datum is NAD83 Oregon State Plane North International Feet.
7. Aerial imagery from City of Portland 2016.

Publish Date: 2018/11/20, 10:17 AM | User: cgardner  
 Filepath: \\Orcas\gis\Jobs\NW\_Natural\_Gas\_0029\Gasco\_Site\_Remedial\Maps\F5\Section7\AQ\_FS\_Fig7-x\_MGP\_Layers\_HotSpot\_ER\_and\_HP\_Maps\_Template\_11x17.mxd



**Figure 7-7**  
**Potential Hot Spots – Surface Soil**  
 Interim Feasibility Study  
 Former Gasco OU



Publish Date: 2018/11/20, 10:16 AM | User: cgardner  
 Filepath: \\Orcas\gis\Jobs\NW\_Natural\_Gas\_0029\Gasco\_Site\_Remedial\Maps\F5\Section7\AQ\_FS\_Fig7-x\_MGP\_Layers\_HotSpot\_ER\_and\_HP\_Maps\_Template\_11x17.mxd



**Figure 7-8**  
**Potential Hot Spots – Subsurface Soil**  
 Interim Feasibility Study  
 Former Gasco OU