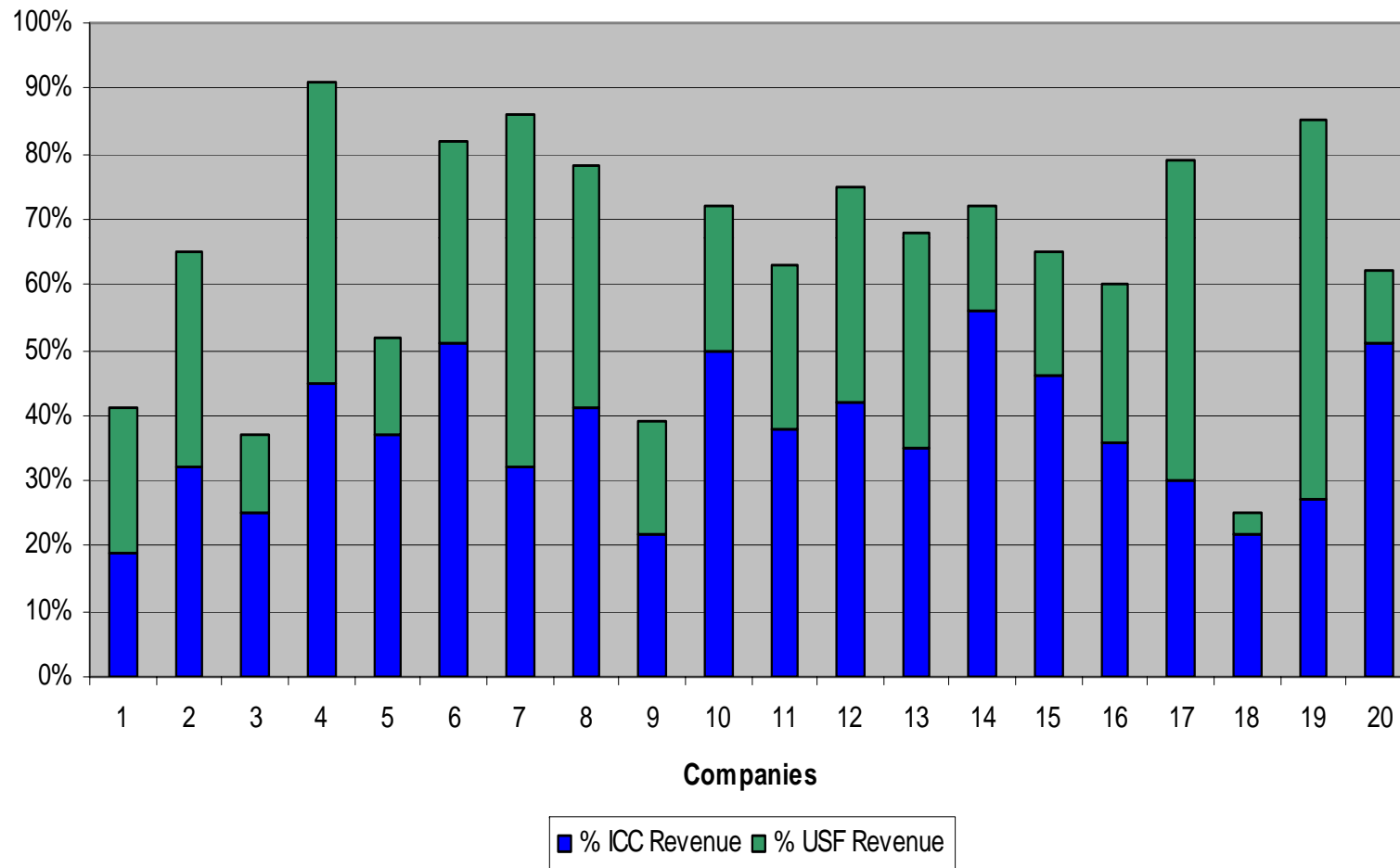




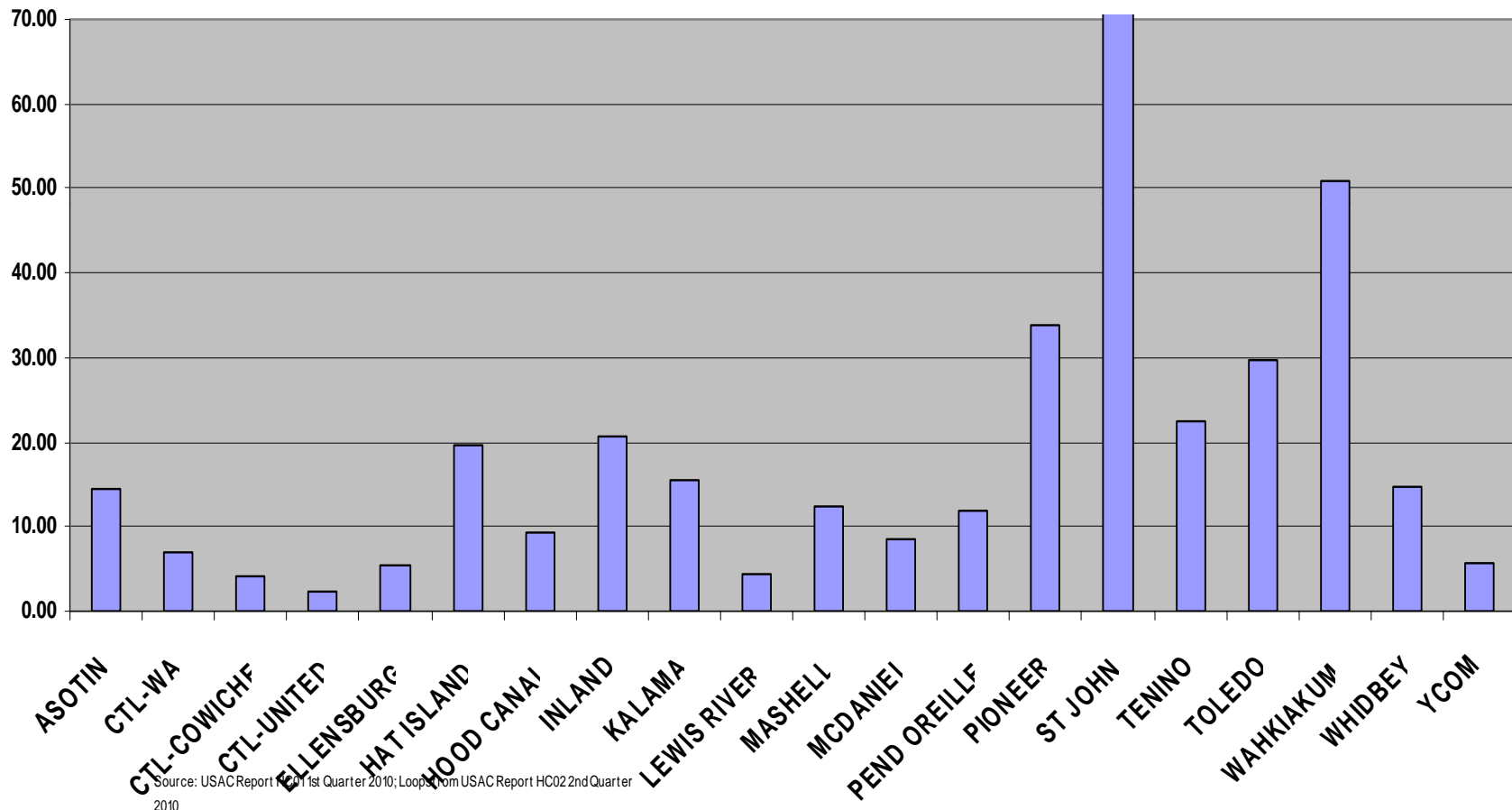
# UNIVERSAL SERVICE IN WASHINGTON

**Robert A. Smith**  
**President - Washington Exchange Carrier Assn.**  
**Vice President – Washington Independent**  
**Telecommunications Association**  
**July 27, 2010**

# Percent Total Regulated Telecommunication Revenue From ICC/USF

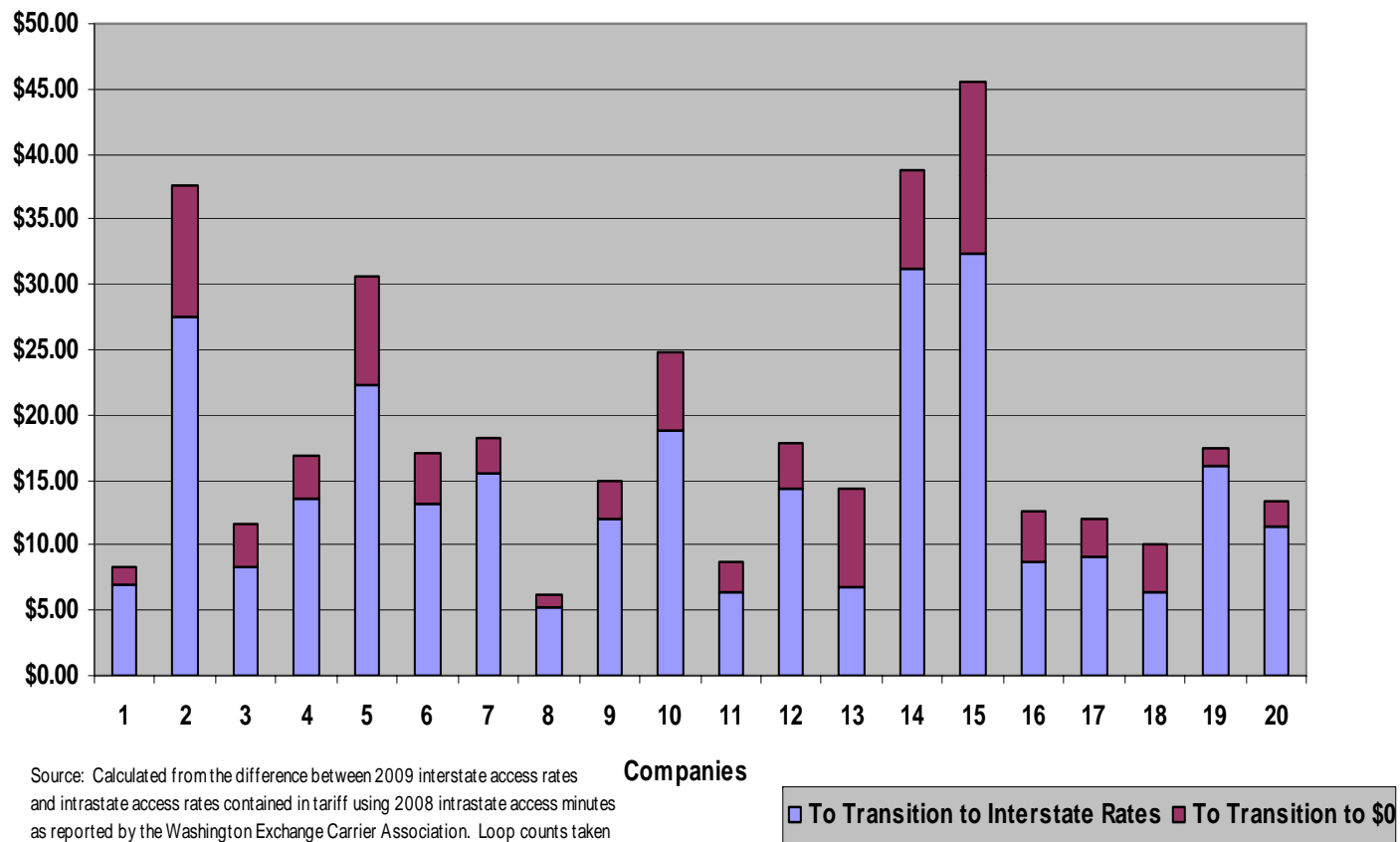


# WITA MEMBER COMPANIES FROZEN PER LINE ICLS (IAS)



Source: USAC Report HC01 1st Quarter 2010; Loop from USAC Report HC02 2nd Quarter 2010

# WITA MEMBER COMPANIES AMOUNT PER LOOP PER MONTH TO TRANSITION OF ACCESS RATES



# RESIDENTIAL RATE INCREASE FROM TRANSITION OF ACCESS RATES

Company	Current Rate*	Per Loop Per Month**	Post Transition Rate	Post Transition 0 Access	Rate with \$6.50 SLC
TDS (Asotin)	\$17.20	\$16.16	\$33.36	\$34.70	\$41.20
CenturyLink (WA)	\$25.90	\$9.18	\$35.08	\$47.07	\$53.57
CenturyLink (Coviche)	\$19.00	\$6.71	\$25.71	\$40.13	\$46.63
CenturyLink (Embarq)	\$16.40	\$6.43	\$22.83	\$32.85	\$39.35
FairPoint (Ellensburg)	\$8.47	\$11.43	\$19.90	\$21.84	\$28.34
FairPoint (YCOM)	\$16.00	\$6.99	\$22.99	\$24.27	\$30.77
Hat Island	\$15.00	\$6.37	\$21.37	\$23.71	\$30.21
Hood Canal	\$13.75	\$13.21	\$26.96	\$30.86	\$37.36
Inland	\$13.80	\$32.36	\$46.16	\$59.36	\$65.86
Kalama	\$13.00	\$8.35	\$21.35	\$24.64	\$31.14
TDS (Lewis River)	\$26.00	\$5.30	\$31.30	\$32.20	\$38.70
TDS (McDaniel)	\$14.30	\$14.35	\$28.65	\$32.11	\$38.61
POTC	\$14.50	\$11.95	\$26.45	\$29.42	\$35.92
Pioneer	\$9.00	\$31.16	\$40.16	\$47.79	\$54.29
Rainier Connect	\$13.75	\$15.56	\$29.31	\$31.94	\$38.44
St. John	\$9.50	\$22.20	\$31.70	\$40.18	\$46.68
Tenino	\$12.00	\$8.66	\$20.66	\$24.57	\$31.07
Timberline	\$19.50	\$2.25	\$21.75	No data	No data
Toledo	\$30.94	\$18.81	\$49.75	\$55.79	\$62.29
Wahkiakum	\$13.40	\$27.46	\$40.86	\$50.91	\$57.41
Whidbey	\$9.40	\$13.54	\$22.94	\$26.23	\$32.73

\*Taken from Exhibit TWZ-3 prepared by Commission Staff Member Mr. Zawislak in Docket UT-081393. Where a company has different rates for different exchanges, the rate for the most Populated exchange was chosen.

\*\*Loop counts taken from USAC Report HC05, 3<sup>rd</sup> Quarter 2009. Amount of transition calculated using 2009 interstate and intrastate tariffed rates and 2008 intrastate access minutes Reported by the Washington Exchange Carrier Association.

# WITA DENSITY SCHEDULE

Company	Square* Miles Served	Working** Loops	Density
Asotin	303	1,217	4.02
CTL	20,800	206,161	9.91
Ellensburg	1,373	18,812	13.70
Hood Canal	14	1,377	98.36
Inland	367	2,645	7.21
Kalama	120	2,968	24.73
Lewis River	156	5,717	36.65
McDaniel	190	4,041	21.27
POTC	1,027	1,941	1.89
Pioneer	800	765	0.96
Rainier Connect	91	3,652	40.13
Skyline	12	139	11.58
St. John	238	614	2.58
Tenino	100	3,421	34.21
Toledo	127	2,020	15.91
Wahkiakum	110	1,169	10.63
Whidbey	82	12,780	155.85
Hat Island	1	83	83.00
YCOM	176	10,880	61.82
Beaver Creek	32	28	0.88
WITA Average	26,119	280,430	10.74

Verizon 36.5 lines/sq. mile  
Qwest 107.81 lines/sq. mile

\*As reported by the company  
\*\*From USAC Report HC05, 3<sup>rd</sup> Quarter 2009

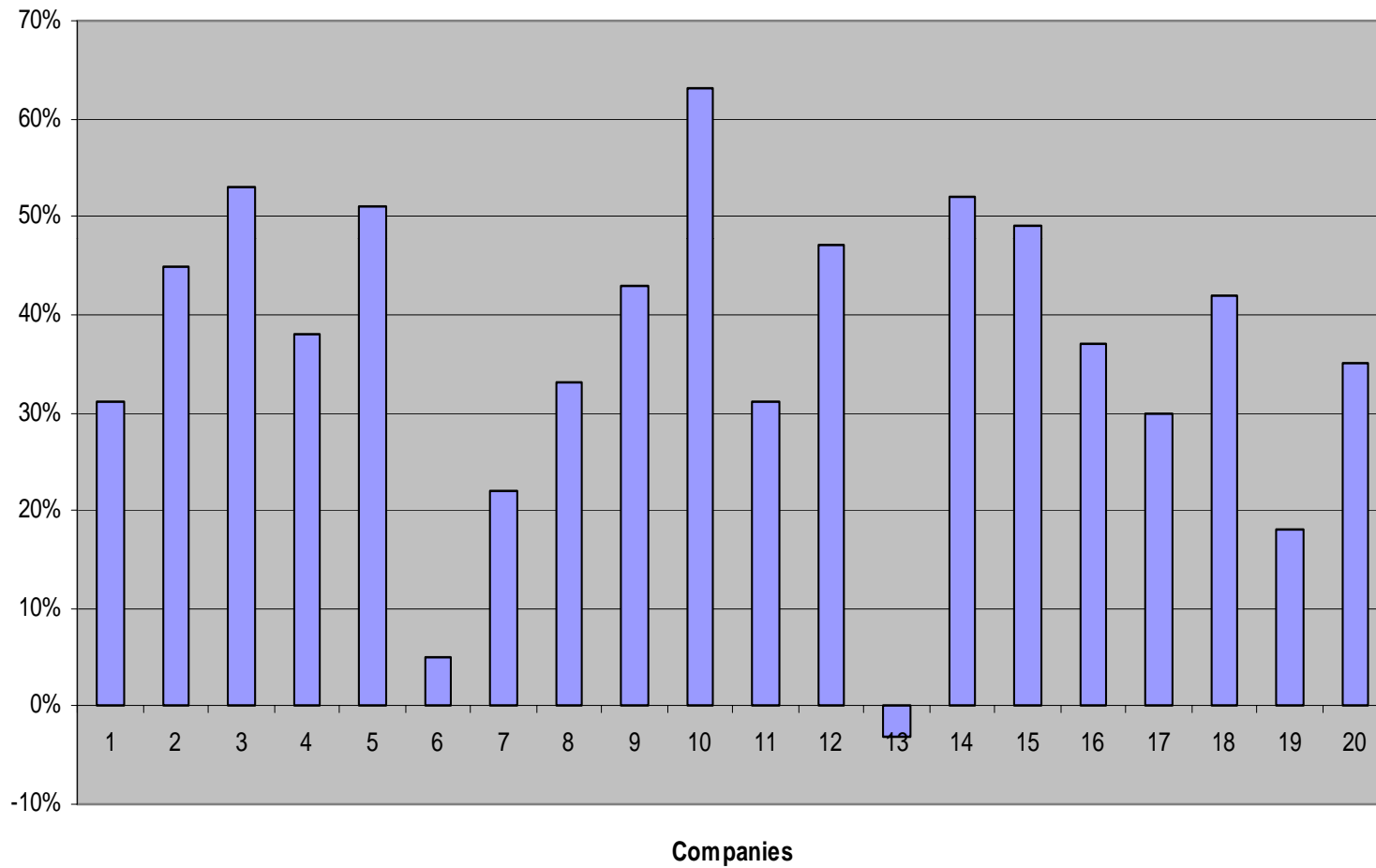
## WASHINGTON STATE COUNTY DENSITY COMPARISON

Company	Density (loops/sq. mi.)	County	Population/Sq. Mi.*
Asotin	4.02	Asotin	32.4
Beaver Creek	0.88	Snohomish	290.1
Ellensburg**	13.70	Kittitas	32.4
Hat Island	83.00	Island	344
Hood Canal	98.36	Mason	51.4
Inland***	7.21	Kittitas	32.4
Kalama	24.73	Cowlitz	81.6
Lewis River	36.65	Clark	549.7
McDaniel	21.27	Lewis	28.5
Pend Oreille	1.89	Pend Oreille	8.4
Pioneer	0.96	Whitman	18.9
Rainier Connect	40.13	Pierce	417
Skyline	11.58	Okanogan	7.5
St. John	2.58	Whitman	18.9
Tenino	34.21	Thurston	285
Toledo	15.91	Lewis	28.5
Wahkiakum	10.63	Wahkiakum/Pacific	14.5/22.5
Whidbey***	155.85	Island	344
YCOM	61.82	Thurston	285

\*Census Bureau Quick Facts at <http://quickfacts.census.gov/qfd/status/53000.html>

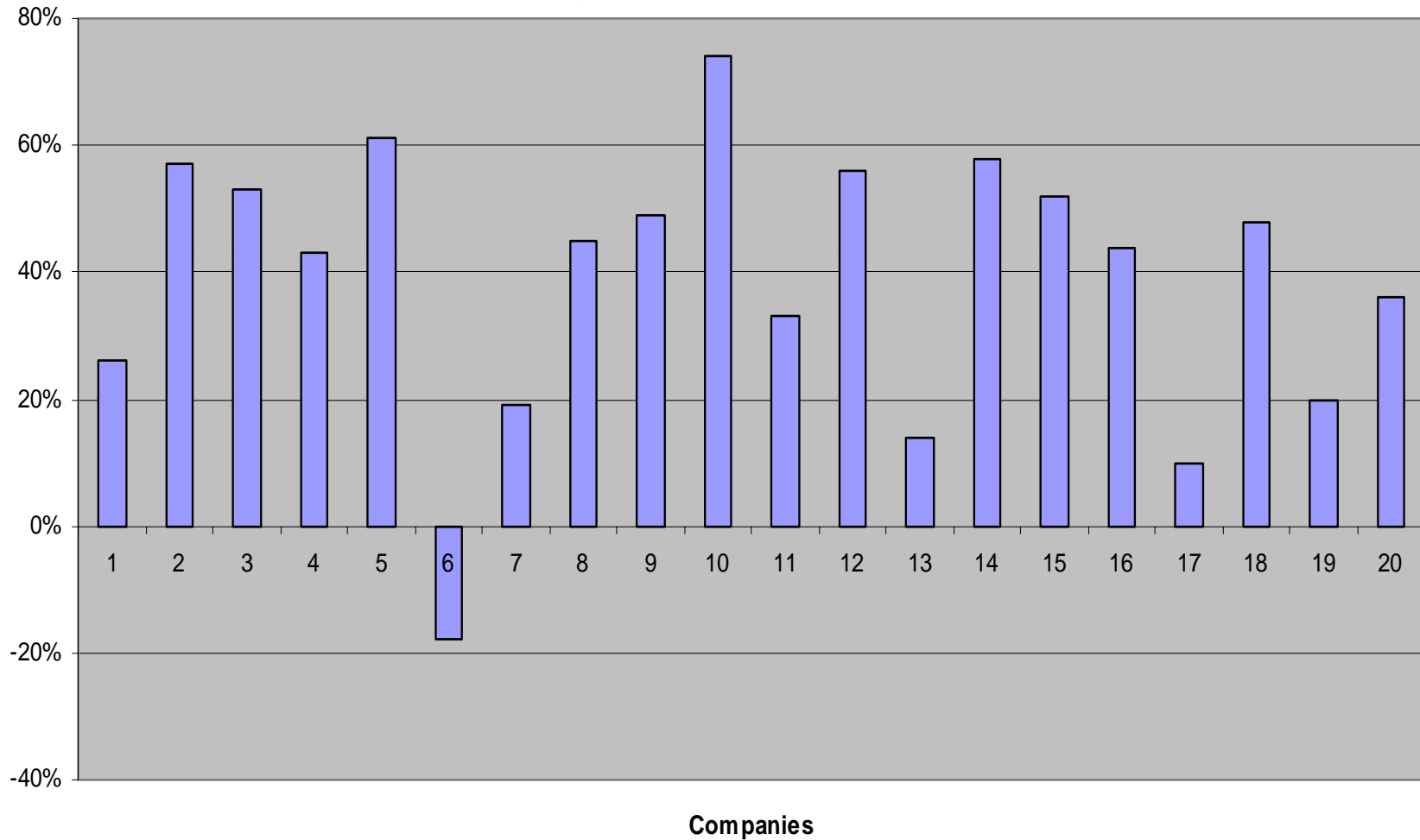
\*\*One of Ellensburg's exchanges is in the much more densely populated Yakima County. Inland also serves exchanges in Mason, Whitman and Walla Walla Counties. The Kittitas County exchange is its largest. Whidbey also serves the Point Roberts exchange in Whatcom County. Its exchange in Island County is its largest.

# Percentage Access Minute Loss Total Minutes (2004-2009)





# Percentage Access Minute Loss Terminating Minutes (2004-2009)



## Loop Loss (2005-2010)

Company	2005 Working Loops	2010 Working Loops	Number Lost	% Loss
Asotin	1,464	1,217	247	16.87%
CenturyLink	184,216	139,576	44,640	24.23%
Ellensburg	24,295	18,812	5,483	22.57%
Hat Island	108	83	25	23.15%
Hood Canal	1,465	1,377	88	6.01%
Inland	2,790	2,645	145	5.20%
Kalama	3,294	2,968	326	9.90%
Lewis River	6,490	5,717	773	11.91%
Mashell	3,789	3,652	137	3.62%
McDaniel	4,597	4,041	556	12.09%
Pend Oreille	2,132	1,941	191	8.96%
Pioneer	899	765	134	14.91%
St. John	631	614	17	2.69%
Tenino	3,796	3,421	375	9.88%
Toledo	2,245	2,020	225	10.02%
United	83,122	66,585	16,537	19.89%
Wahkiakum	1,244	1,169	75	6.03%
Whidbey	13,703	12,780	923	6.74%
YCOM	12,329	10,880	1,449	11.75%
Verizon	844,941	561,109	283,832	33.59%
Qwest	2,328,093	1,598,944	729,149	31.32%
<b>TOTAL</b>	<b>3,525,643</b>	<b>2,440,316</b>	<b>1,085,327</b>	<b>30.78%</b>