



Crowley ATB regular caller in Puget Sound, low freeboard regardless of loading condition, easy to climb, smaller vessel, and yet still a bent spreader bar.



Pilot ladder low freeboard, secured to ship, handrails missing securing pins. Picture provided by Capt. Coleman of ship in Puget Sound. This should be the easiest and simplest pilot ladder to rig making it the safest choice on a smaller sized vessel.



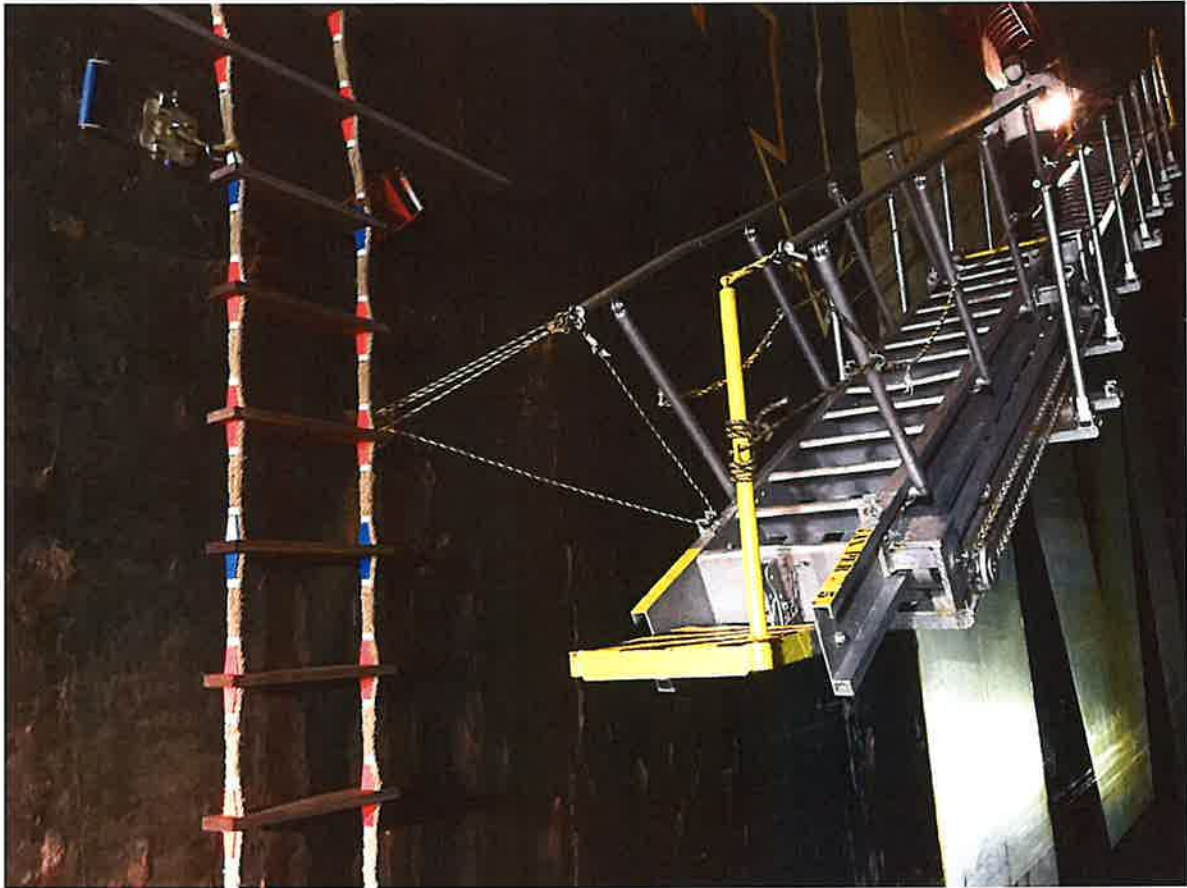
Evergreen Ship in Tacoma. This ship uses a winch reel and a long pilot ladder above that cannot be inspected prior to boarding or during disembarking. Pilot's must rely on blind faith it is rigged properly. Additionally, the ship uses an external protruding platform, this is also faith that the pins are installed. Last year, that was not the case and a Long Beach pilot ended up in the water when the platform fell, almost injuring the pilot, boat crews and damaging the pilot boat.



BTG Denali 5/15/22. Large ship requiring combination ladder, Lower platform of combination ladder is not horizontal, requiring the pilot to make a transfer to an uneven sloping surface from the pilot ladder to the combination ladder.



Combination ladder required to be rigged as freeboard too high, this was rigged improperly missing the inboard stanchion. Also, retrieval line rigged improperly creating risk to pilot boat and to pilot on the ladder. This also requires the pilot to blindly trust the pins are in place to hold the lower platform from falling when making the step across. Ocean Bao, March 20, 2023 Puget Sound.



Due to large freeboard, this ship requires a combination ladder, again rigged dangerously improper, missing stanchions, too far away horizontally from pilot ladder and too far away from the side of the ship. Additionally, this gangway used as part of the combination ladder is a telescoping gangway, often requiring pins to be placed in order to stop the extension when weight is placed on the lower portion of the gangway, often pins are not placed and the gangway will extend a few more feet when stepping on it, this is common when at the dock, it will extend until the wires reach maximum extension. MSC Ans June 28, 2021.



Even low freeboard ships with simple ladders can be dangerous.