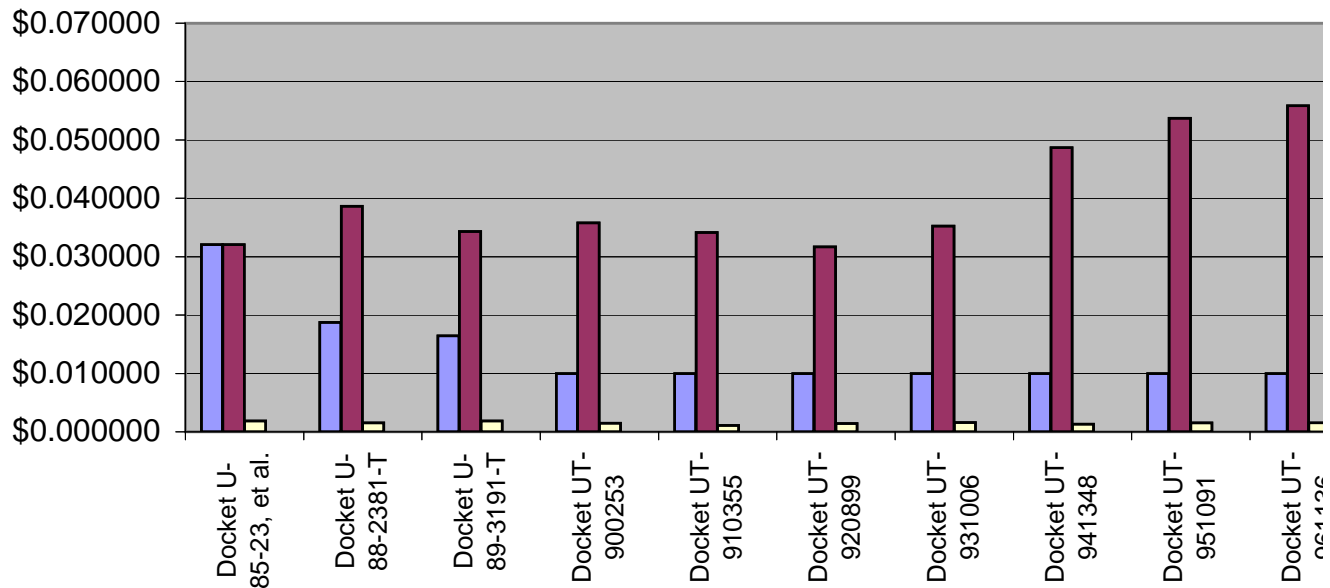


WECA Tariff R Curren

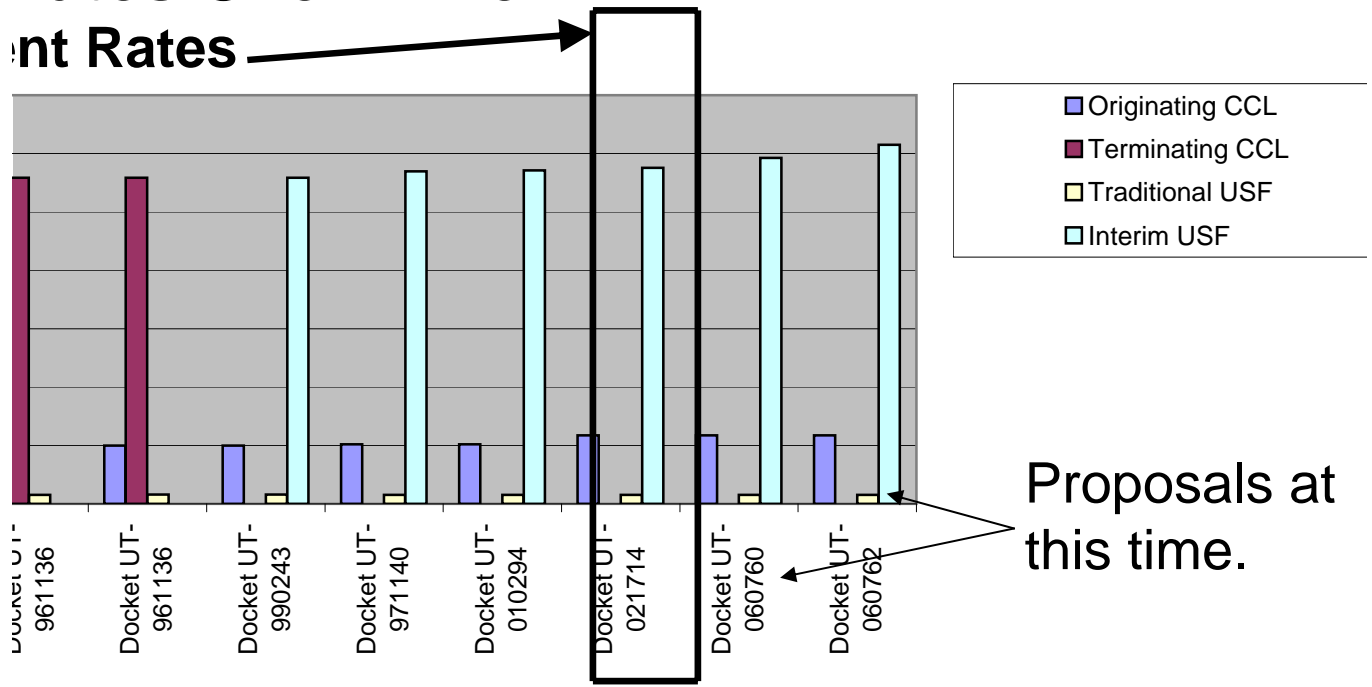


	Effective	Originating CCL	Terminating CCL
1. Docket U-85-23, et al.	April 1, 1987	\$0.032050	\$0.032050
2. Docket U-88-2381-T	September 15, 1988	\$0.018760	\$0.038660
3. Docket U-89-3191-T	December 1, 1989	\$0.016460	\$0.034310
4. Docket UT-900253	July 1, 1990	\$0.010000	\$0.035790
5. Docket UT-910355	June 15, 1991	\$0.010000	\$0.034140
6. Docket UT-920899	April 1, 1993	\$0.010000	\$0.031690
7. Docket UT-931006	July 1, 1994	\$0.010000	\$0.035260
8. Docket UT-941348	November 1, 1994	\$0.010000	\$0.048700
9. Docket UT-951091	October 1, 1995	\$0.010000	\$0.053710
10. Docket UT-961136	October 1, 1996	\$0.010000	\$0.055870
11. Docket UT-961136	October 1, 1996	\$0.010000	\$0.055870
12. Docket UT-990243	April 1, 1999	\$0.010000	\$0.000000
13. Docket UT-971140	September 1, 2000	\$0.010200	\$0.000000
14. Docket UT-010294	April 1, 2001	\$0.010200	\$0.000000

15. Docket UT-021714	February 1, 2003	\$0.011730	\$0.000000
16. Docket UT-060760	July 1, 2006	\$0.011730	\$0.000000
17. Docket UT-060762	July 1, 2006	\$0.011730	\$0.000000

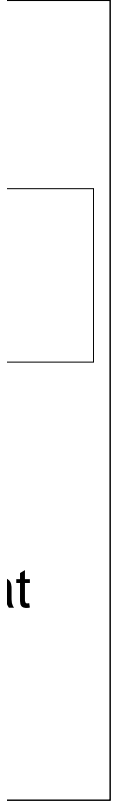
Rates Over Time

Rate Rates



Traditional USF	Interim USF
\$0.001840	n/a
\$0.001520	n/a
\$0.001870	n/a
\$0.001500	n/a
\$0.001100	n/a
\$0.001420	n/a
\$0.001570	n/a
\$0.001310	n/a
\$0.001520	n/a
\$0.001520	n/a
\$0.001570	n/a
\$0.001570	\$0.055870
\$0.001520	\$0.056960
\$0.001520	\$0.057100

\$0.001520	\$0.057540	Current Rates
\$0.001520	\$0.059270	
\$0.001520	\$0.061530	



History of WECA Rates		Originating CCL (Originating only)	Terminating CCL (Terminating only)	Traditional USF (both Orig. & Term.)	Interim USF (Terminating only)
<u>Docket Chronology</u>	Effective Dates				
Original Tariff					
1. Docket U-85-23, et al.	April 1, 1987	\$0.032050	\$0.032050	\$0.001840	n/a
<i>impact</i>	annual update?	(\$0.013290)	\$0.006610	(\$0.000320)	n/a
2. Docket U-88-2381-T	September 15, 1988	\$0.018760	\$0.038660	\$0.001520	n/a
<i>impact</i>	annual update?	(\$0.002300)	(\$0.004350)	\$0.000350	n/a
3. Docket U-89-3191-T	December 1, 1989	\$0.016460	\$0.034310	\$0.001870	n/a
<i>impact</i>	annual update	(\$0.006460)	\$0.001480	(\$0.000370)	n/a
4. Docket UT-900253	July 1, 1990	\$0.010000	\$0.035790	\$0.001500	n/a
<i>impact</i>	annual update	no change	(\$0.001650)	(\$0.000400)	n/a
5. Docket UT-910355	June 15, 1991	\$0.010000	\$0.034140	\$0.001100	n/a
<i>impact</i>	annual update	no change	(\$0.002450)	\$0.000320	n/a
6. Docket UT-920899	April 1, 1993	\$0.010000	\$0.031690	\$0.001420	n/a
<i>impact</i>	Contel exit & annual	no change	\$0.003570	\$0.000150	n/a
7. Docket UT-931006	July 1, 1994	\$0.010000	\$0.035260	\$0.001570	n/a
<i>impact</i>	annual update	no change	\$0.013440	(\$0.000260)	n/a
8. Docket UT-941348	November 1, 1994	\$0.010000	\$0.048700	\$0.001310	n/a
<i>impact</i>	PTI acq. USW	no change	\$0.005010	\$0.000210	n/a
9. Docket UT-951091	October 1, 1995	\$0.010000	\$0.053710	\$0.001520	n/a
<i>impact</i>	T/O Ratio	no change	\$0.002160	no change	n/a
10. Docket UT-961136	October 1, 1996	\$0.010000	\$0.055870	\$0.001520	n/a
<i>impact</i>	incl. Pend O.	no change	no change	\$0.000050	n/a
11. Docket UT-961136	October 1, 1996	\$0.010000	\$0.055870	\$0.001570	n/a
<i>impact</i>	WAC 480-120-540	no change	(\$0.055870)	no change	\$0.055870
12. Docket UT-990243	April 1, 1999	\$0.010000	\$0.000000	\$0.001570	\$0.055870
<i>impact</i>	shift Pend O.	\$0.000200	no change	(\$0.000050)	\$0.001090
13. Docket UT-971140	September 1, 2000	\$0.010200	\$0.000000	\$0.001520	\$0.056960
<i>impact</i>	WCAP begins				
14. Docket UT-010294	April 1, 2001	\$0.010200	\$0.000000	\$0.001520	\$0.000140
<i>impact</i>	M&L enters	no change	no change	no change	\$0.057100
15. Docket UT-021714	February 1, 2003	\$0.011730	\$0.000000	\$0.001520	\$0.000440
<i>impact</i>	LocalTel enters	\$0.001530	\$0.000000	no change	\$0.004400
16. Docket UT-060760	July 1, 2006	\$0.011730	\$0.000000	\$0.001520	\$0.059270
<i>impact</i>	BCTC proposal	no change	\$0.000000	no change	\$0.001730
17. Docket UT-060762	July 1, 2006	\$0.011730	\$0.000000	\$0.001520	\$0.02260
<i>impact</i>	WeavTel proposal	no change	\$0.000000	no change	\$0.002260

0.057

\$0.058

0.062

\$0.062

				<i>Recent WECA Impacts</i>				Pre-entry rates		Post-entry rates		Impact on WECA rates		
<i>Open</i>	<i>Meeting</i>	<i>Effective</i>	<i>Days</i>	<i>Docket</i>	<i>Lead</i>	<i>O.M. Cat.</i>	<i>R.O.</i>	<i>Terminating</i>	<i>Originating</i>	<i>Terminating</i>	<i>Originating</i>	<i>Terminating</i>	<i>Originating</i>	
<i>Filed Dates</i>	<i>Dates</i>	<i>Dates</i>	<i>Open</i>											
				M & L Enterprises, Inc. (d/b/a Skyline)										
1/2/2001	1/11/2001	1/11/2001	9	M& L (Skyline)	UT-002024	Bob Shirley	Consent	\$51,300						
3/2/2001	3/28/2001	3/28/2001	26	WECA Tariff Filing	UT-010294	Bob Shirley	No Action		\$0.056960	\$0.010200	\$0.057100	\$0.010200	\$0.000140	\$0.000000
			35											
			85											
				Computers 5*, Inc. (d/b/a LocalTel)										
11/7/2002	11/27/2002	11/27/2002	20	Computers 5* (LocalTel)	UT-021453	Tim Zawislak	Individual	\$597,753						
12/27/2002	1/8/2003	2/1/2003	12	WECA Tariff Filing	UT-021714	Tim Zawislak	Individual		\$0.057100	\$0.010200	\$0.057540	\$0.011730	\$0.000440	\$0.001530
			32											
			86											

\$571,431
\$738,443

	BTC	WeavTel	LocalTel	Skyline	
	Proposed	Proposed	Order	Order	
Total	\$571,431	\$738,443	\$597,753	\$51,300	
Originating	\$1,868	\$970	\$438,496	\$0	
Terminating	\$569,563	\$737,473	\$159,257	\$51,300	WECA implemented all as terminating.